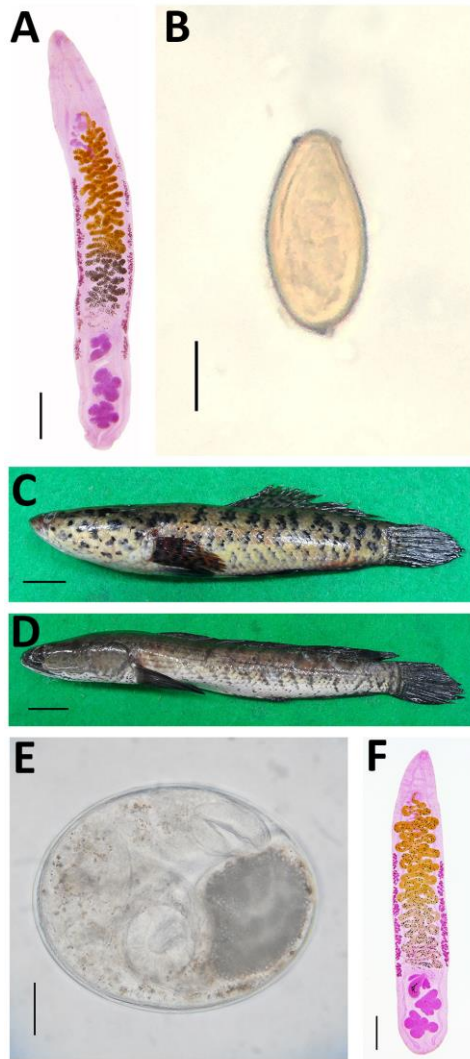


Low-Grade Endemicity of Opisthorchiasis, Yangon, Myanmar

Appendix



Appendix Figure. *Opisthorchis viverrini* from a human case and an experimental hamster, fish hosts, and a metacercaria. A) Adult fluke of *O. viverrini* recovered from a human case (scale bar = 1 mm). B) Egg of *Opisthorchis viverrini* detected by formalin-ether sedimentation of a surveyed resident (scale bar = 10 μm). C– D) Fish hosts. *Channa lucius* (C) (scale bar = 2 cm); *Channa striata* (D) (scale bar = 2 cm). E) Metacercaria of *O. viverrini* from a fish purchased in Yangon (scale bar = 50 μm). F) Adult fluke of *O. viverrini* recovered from an experimentally infected hamster (scale bar = 0.5 mm).