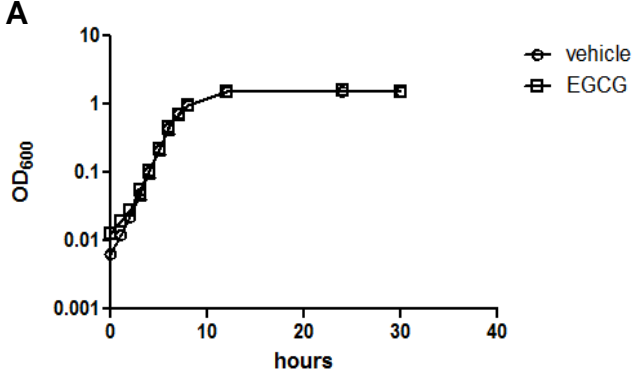
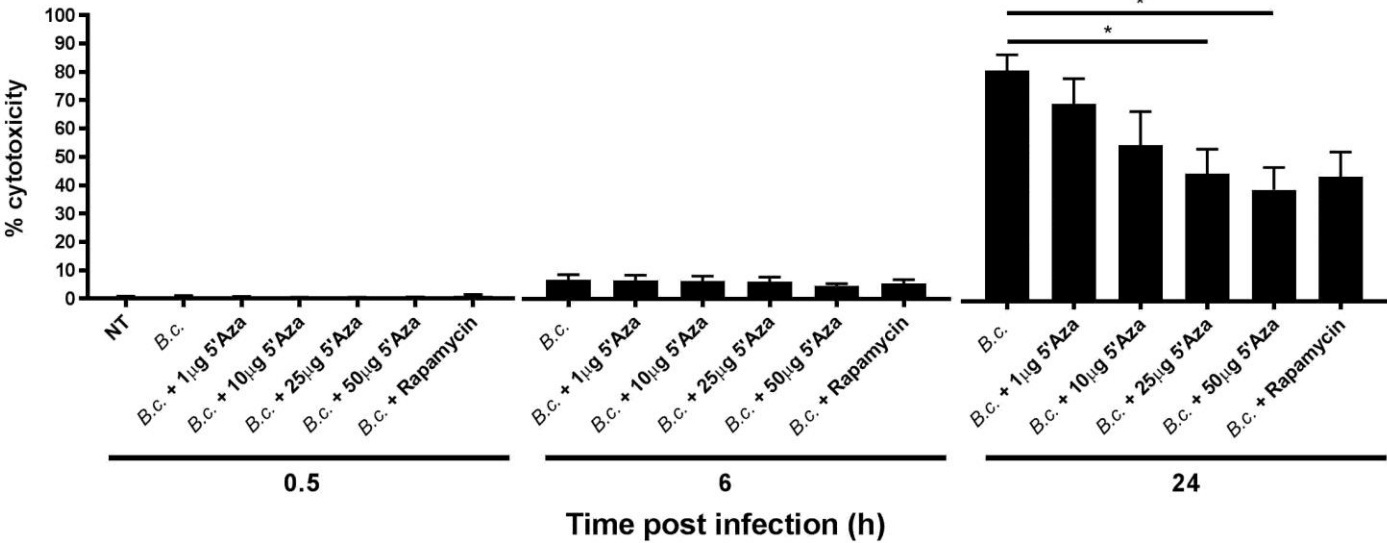


Supplementary Figure 1

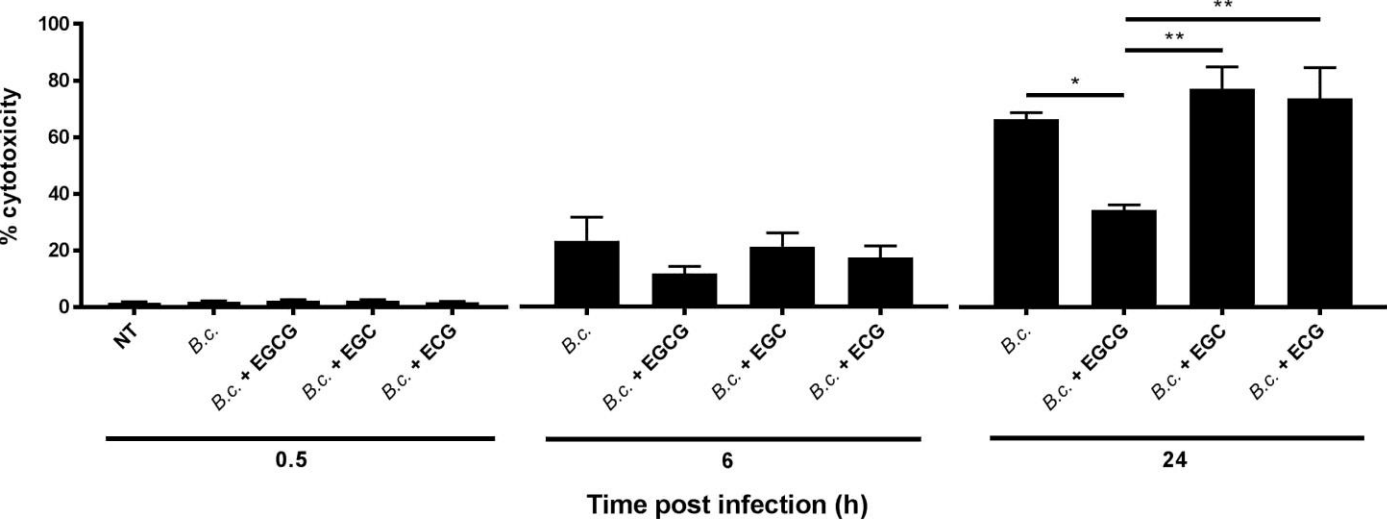


Supplementary Figure 2

A

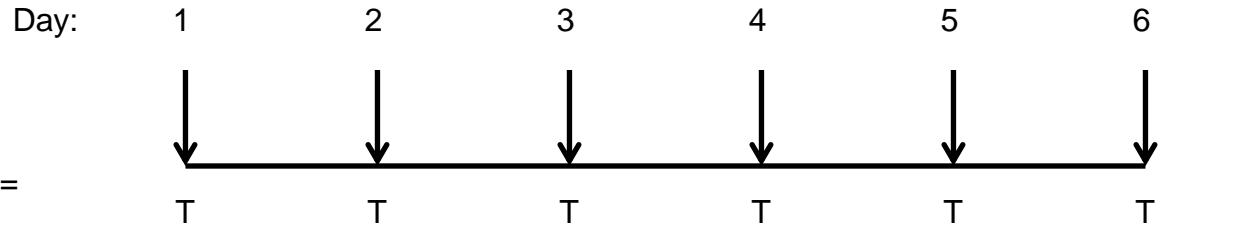


B



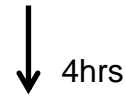
Supplementary Figure 3

- F508del (CF) mice
- treatment/infection = **intratracheal**



- T = treatment (EGCG 25mg/kg)
- 4hr = Lung (CFU, histology, protein, RNA, cytokine, & NMR)
- 48hr = Lung (CFU, histology, protein, RNA, cytokine, & NMR) Spleen, Liver

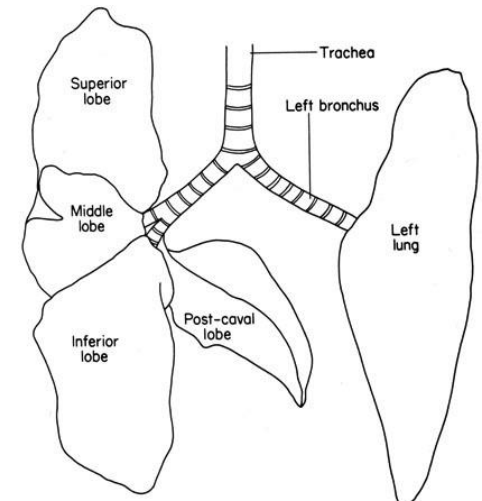
Infect: K56-2



Collect:
4hr time pt.

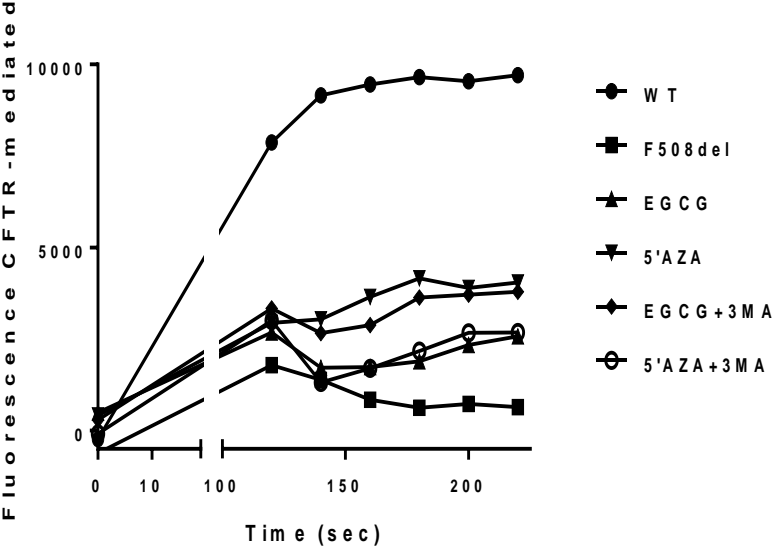
2hrs

Collect:
48hr time pt.



Supplementary Figure 4

A



B

