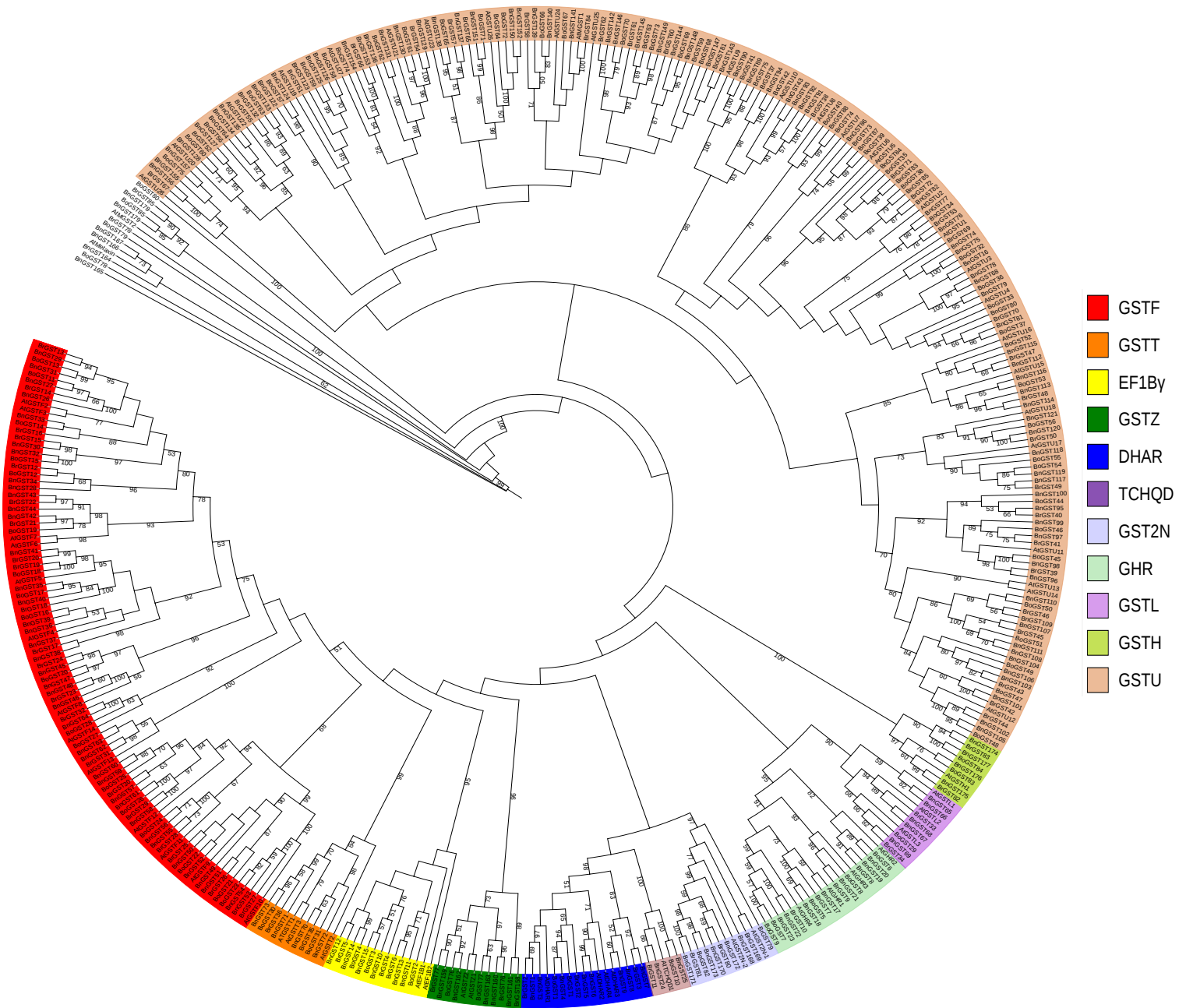


Genome wide identification and comparative analysis of glutathione transferases (GST) family genes in *Brassica napus*

Lijuan Wei^{1,2,†}, Yan Zhu^{1,2,†}, Ruiying Liu^{1,2,†}, Aoxiang Zhang^{1,2}, Meicheng Zhu^{1,2}, Wen Xu^{1,2}, Ai Lin^{1,2}, Kun Lu^{1,2}, Jiana Li^{1,2,*}



Supplementary Figure 1 Phylogenetic tree of *A. thaliana* (At), *B. oleracea* (Bo), *B. rapa* (Br), and *B. napus* (Bn) GST sequences.