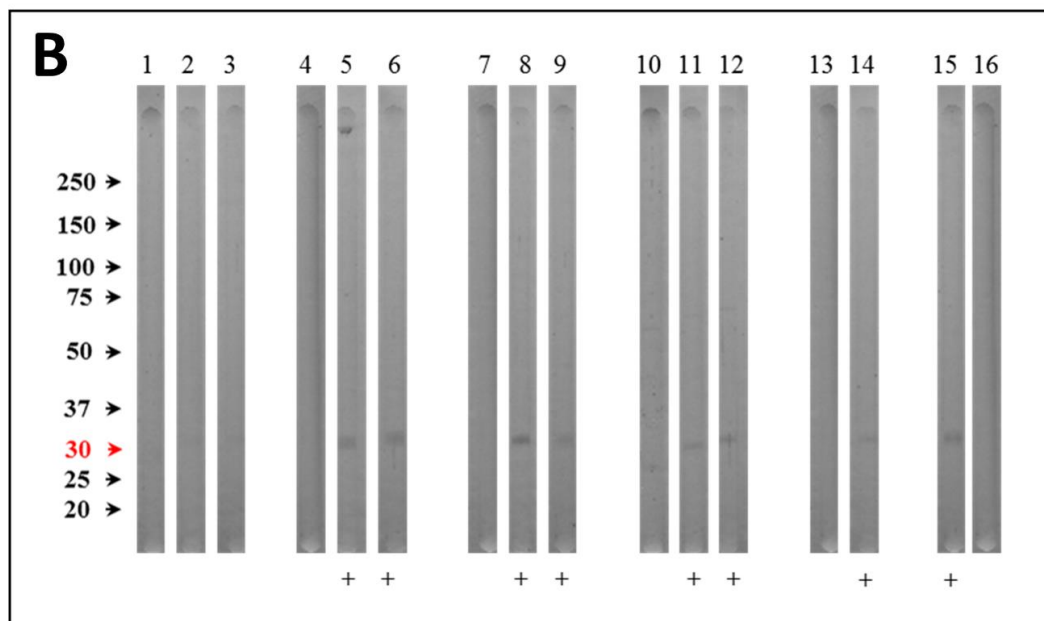
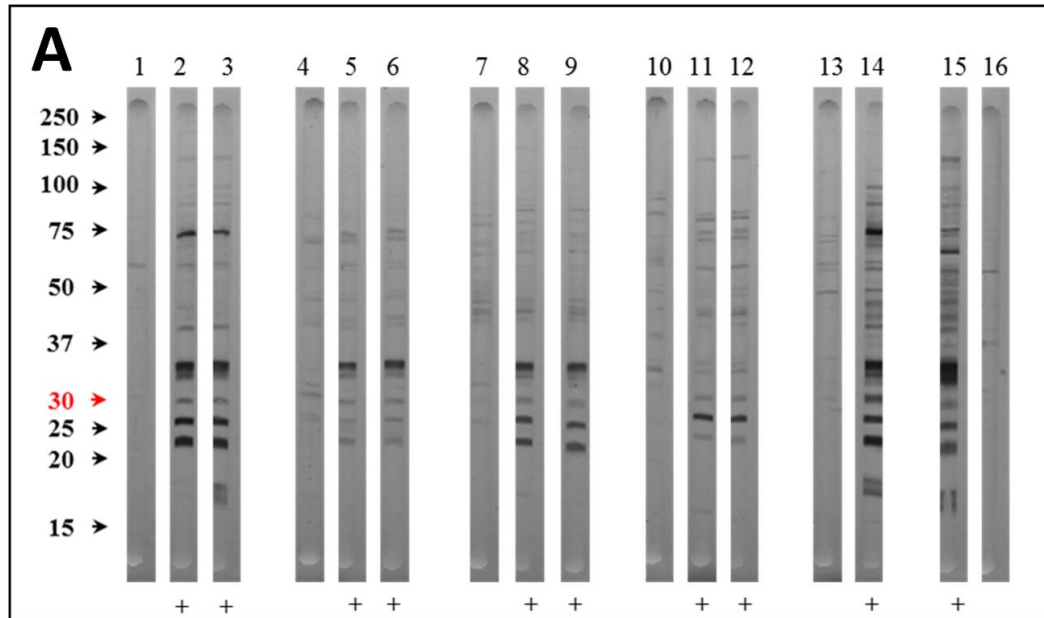


FIG S1 Immunorecognition using Western blot of *T. gondii* tachyzoite antigen SAG1 (A) and bradyzoite antigen BAG1 (B) in serum samples from G1. (+) means recognition of SAG1 or BAG1 antigens at 30 kDa.



Ewe 1.1 gave birth healthy lambs

- 1. Ewe 1.1 day 0 pi
- 2. Ewe 1.1 day 49 pi
- 3. Ewe 1.1 day 56 pi

Ewe 1.2 gave birth healthy lambs

- 4. Ewe 1.2 day 0 pi
- 5. Ewe 1.2 day 49 pi
- 6. Ewe 1.2 day 56 pi

Ewe 1.4 gave birth a healthy lamb

- 7. Ewe 1.4 day 0 pi
- 8. Ewe 1.4 day 49 pi
- 9. Ewe 1.4 day 56 pi

Ewe 1.6 gave birth healthy lambs

- 10. Ewe 1.6 day 0 pi
- 11. Ewe 1.6 day 49 pi
- 12. Ewe 1.6 day 56 pi

Ewe 1.7 gave birth a stillborn lamb

- 13. Ewe 1.7 day 0 pi
- 14. Ewe 1.7 day 49 pi

Controls

- 15. Positive control- Ewe experimentally infected with 50 TgShSp1 oocysts on day 90 of pregnancy (sera of day 49 pi)
- 16. Negative control- One ewe from uninfected group on day 56 pi