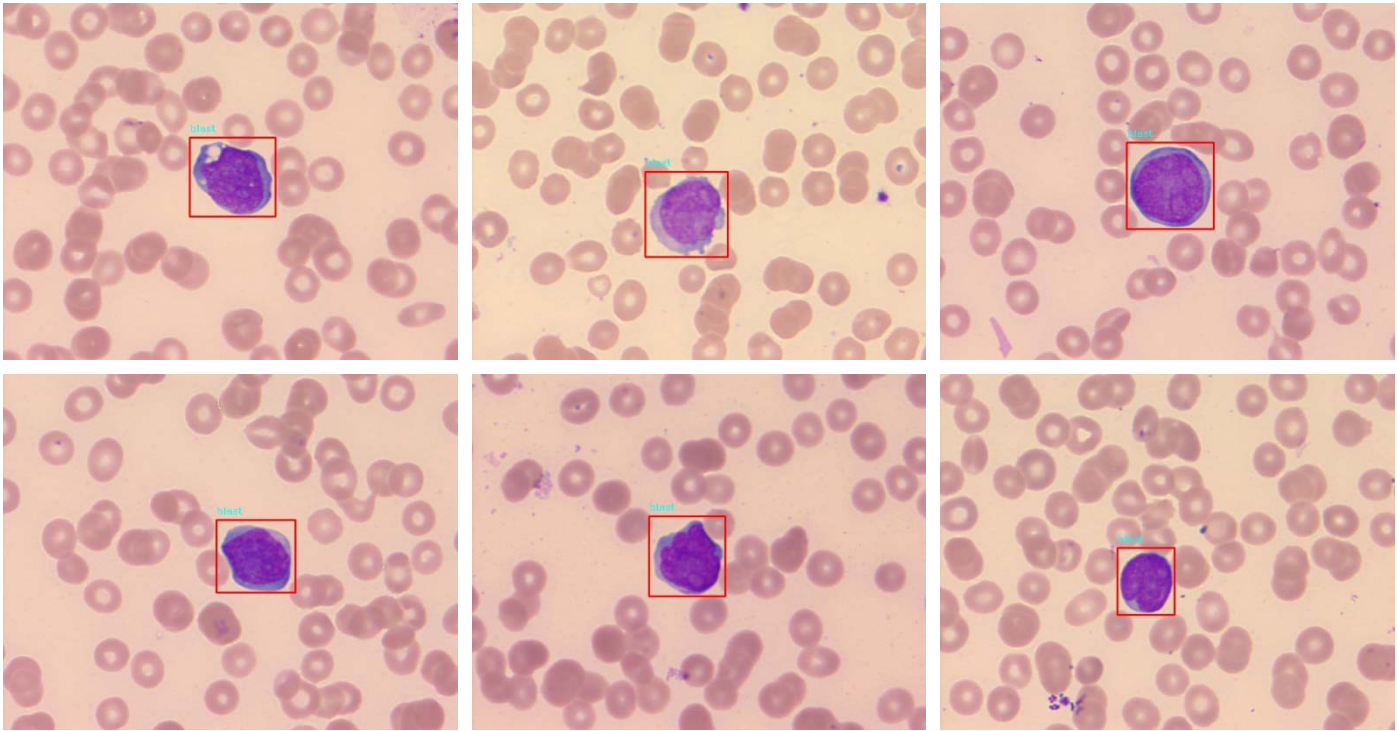
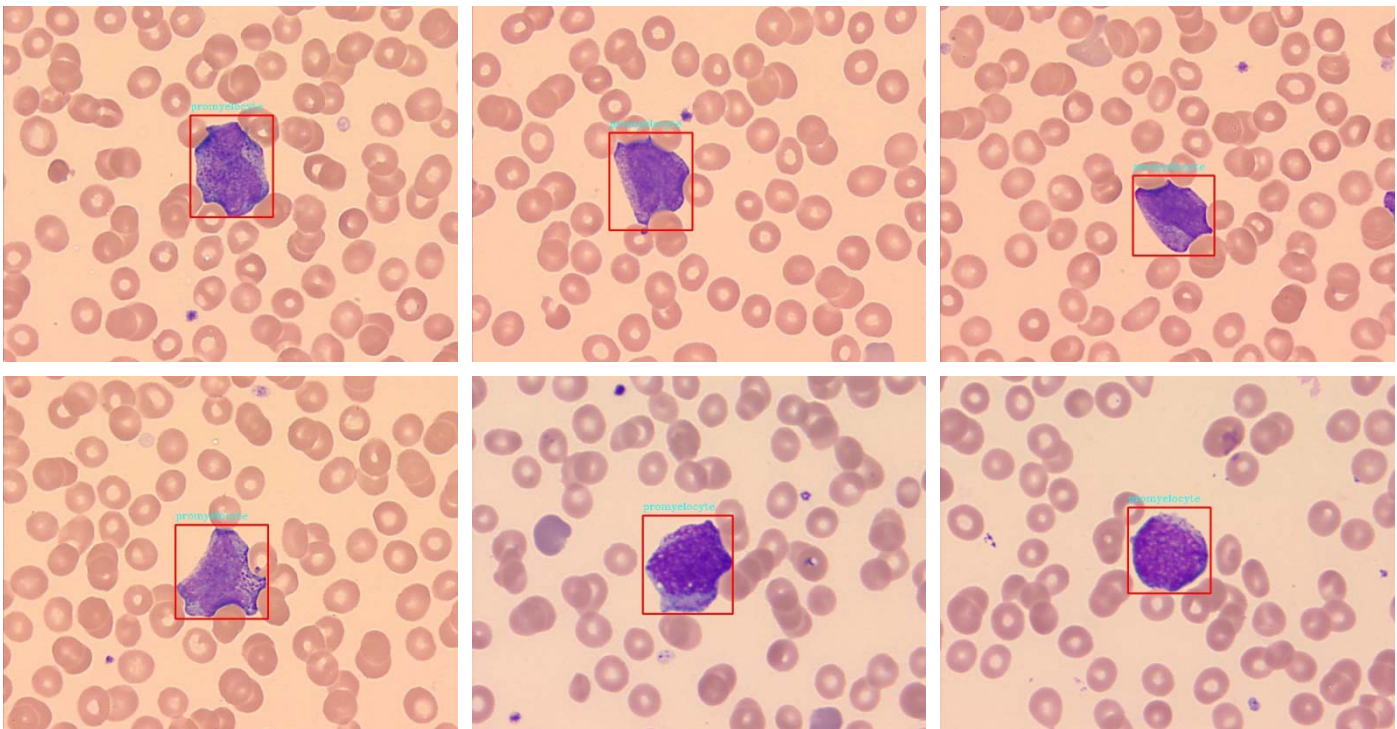


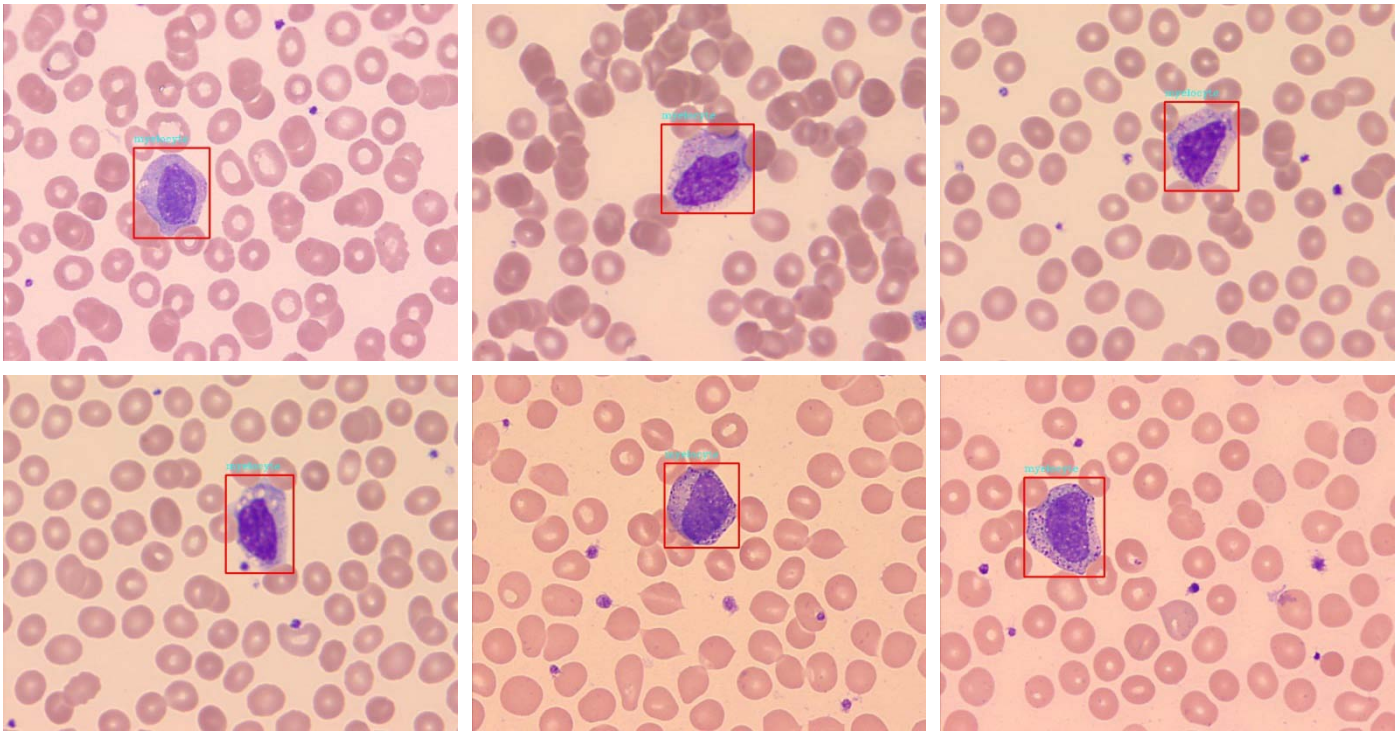
S1 Fig. Selected leukocyte recognition examples using SSD300×300_Smin=0.2 and YOLOv3_320×320 detection models. We show detection results below with the highest confidence scores and intersection over union (IoU) value higher than 0.5. (A)-(M) show the detection results of blast, promyelocyte, myelocyte, metamyelocyte, band neutrophil, segmented neutrophil, lymphocyte, monocyte, reactive lymphocyte, small cells (NRBC) and dense scenes using SSD300×300_Smin=0.2 model respectively while (N)-(Z) show that using YOLOv3_320×320 model.



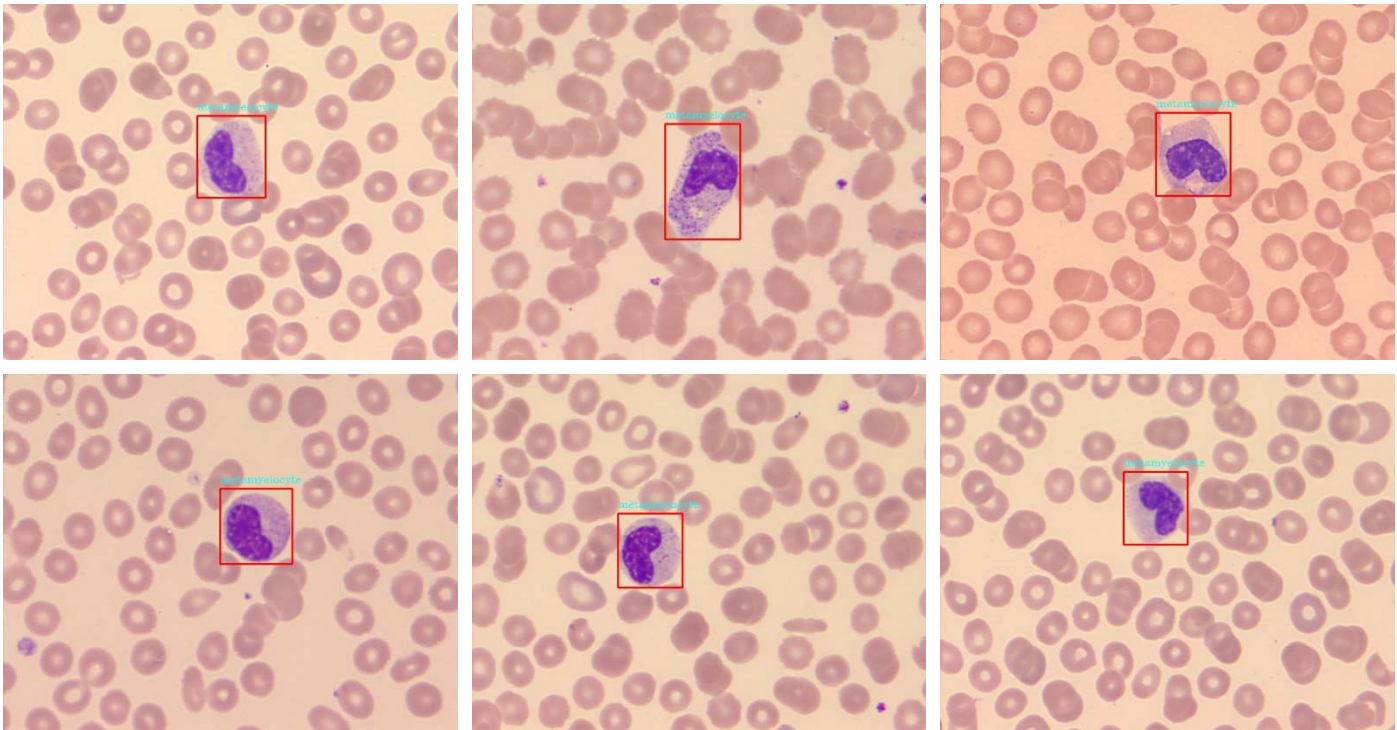
(A) detection results of blast using SSD300×300_Smin=0.2 model



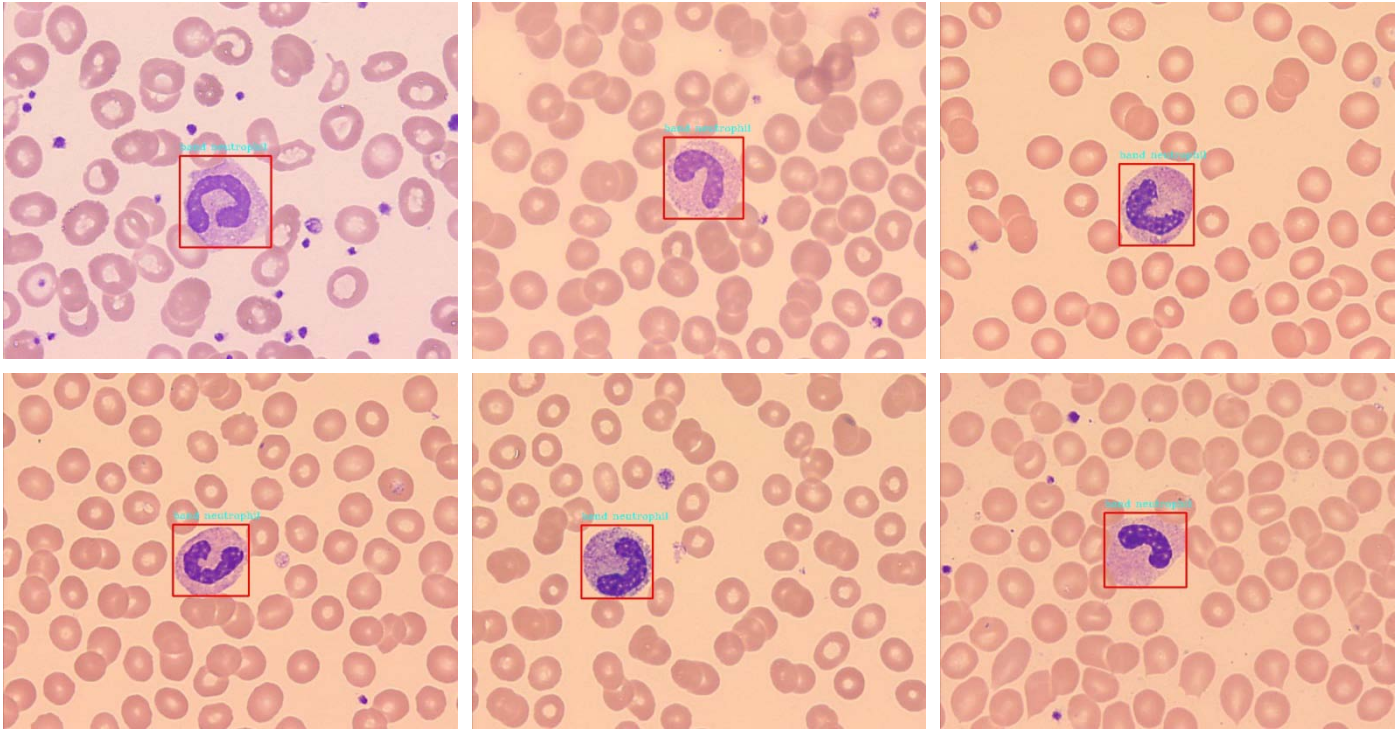
(B) detection results of promyelocyte using SSD300×300_Smin=0.2 model



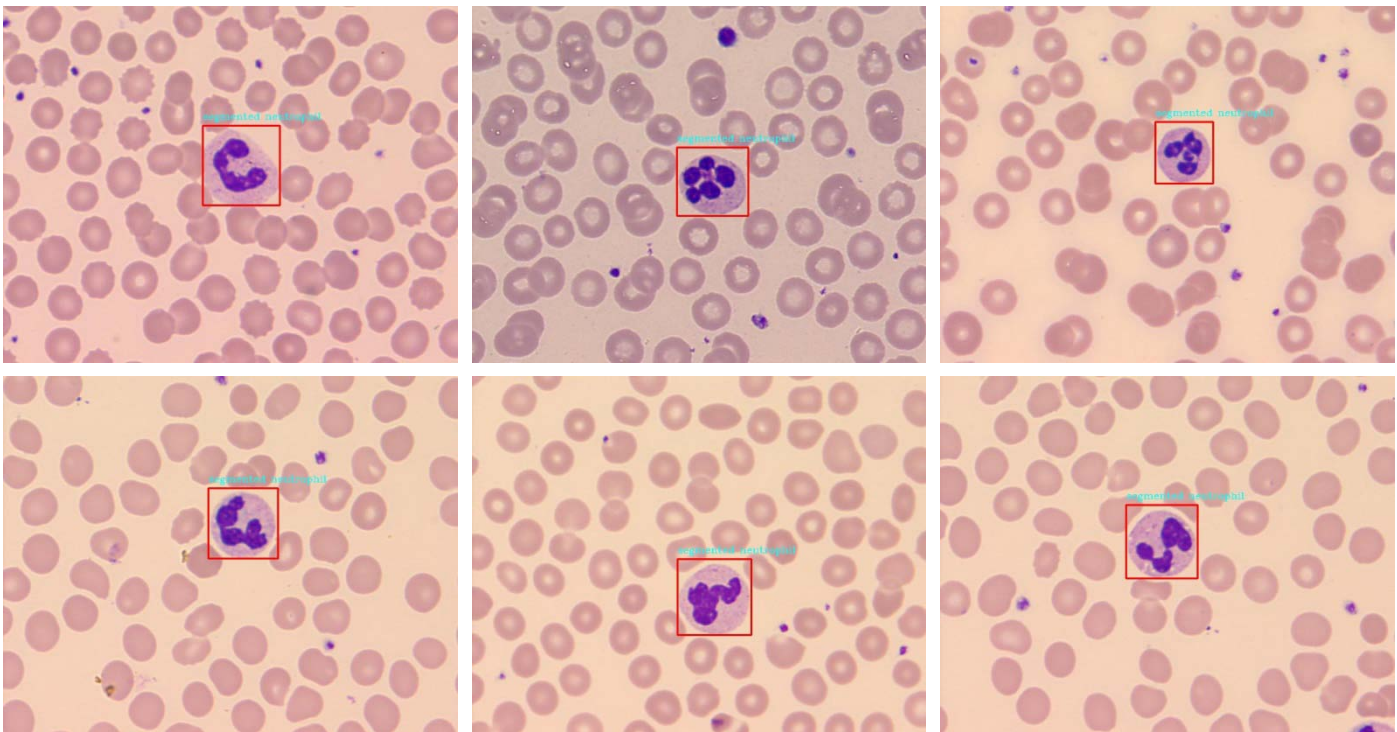
(C) detection results of myelocyte using SSD300×300_Smin=0.2 model



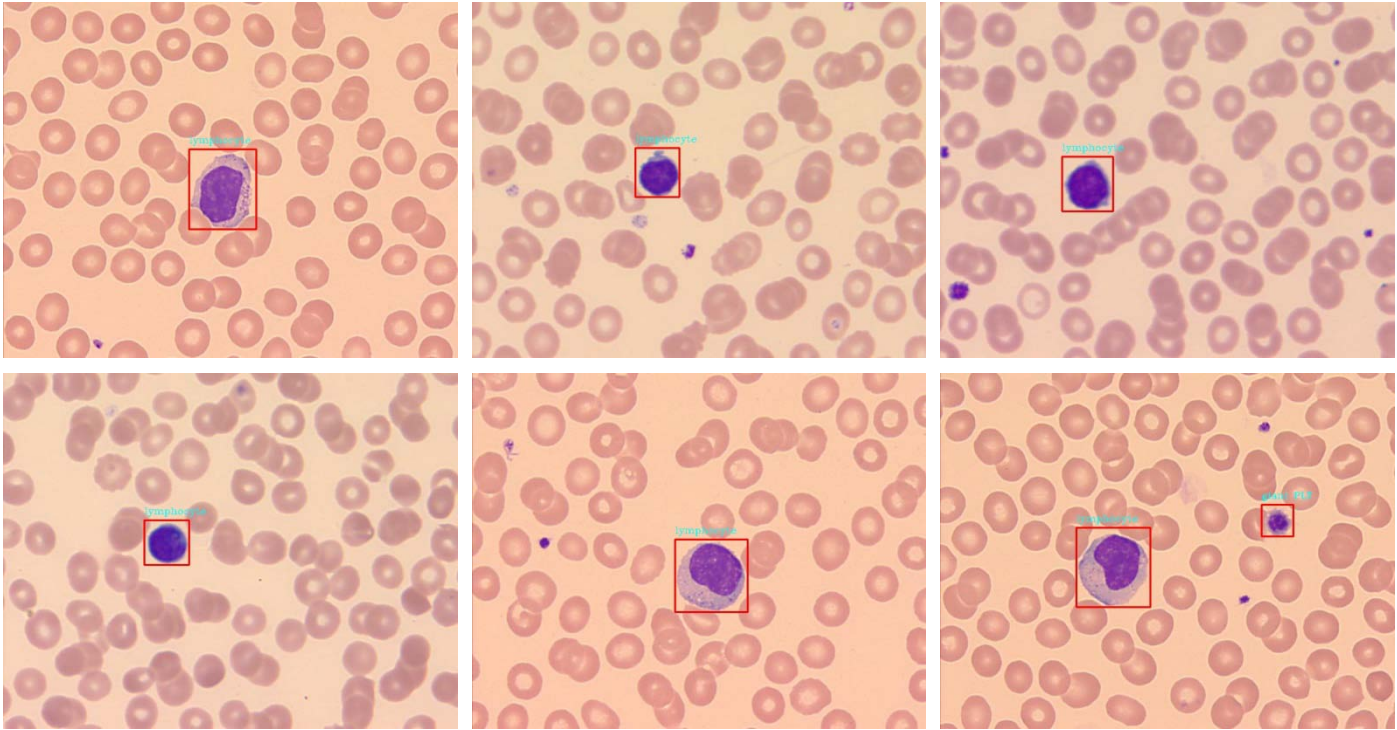
(D) detection results of metamyelocyte using SSD300×300_Smin=0.2 model



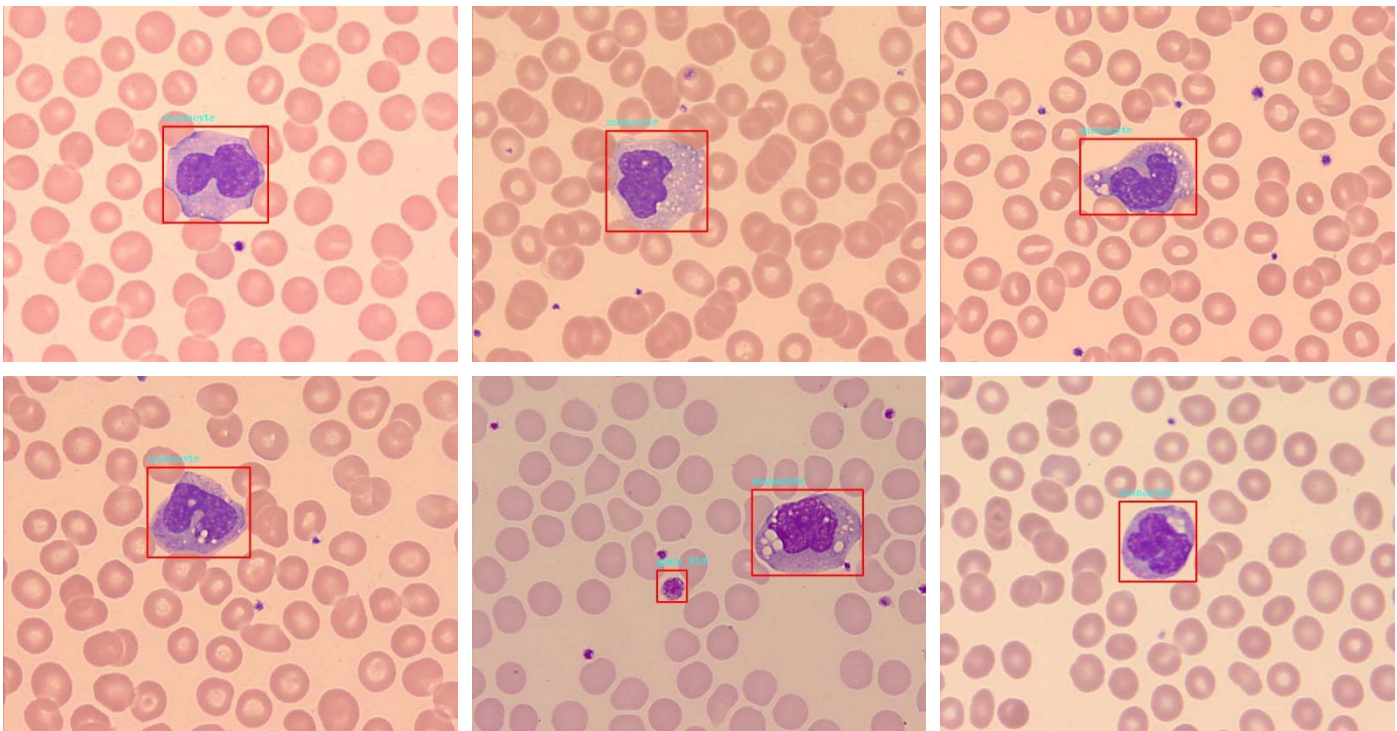
(E) detection results of band neutrophil using SSD300×300_Smin=0.2 model



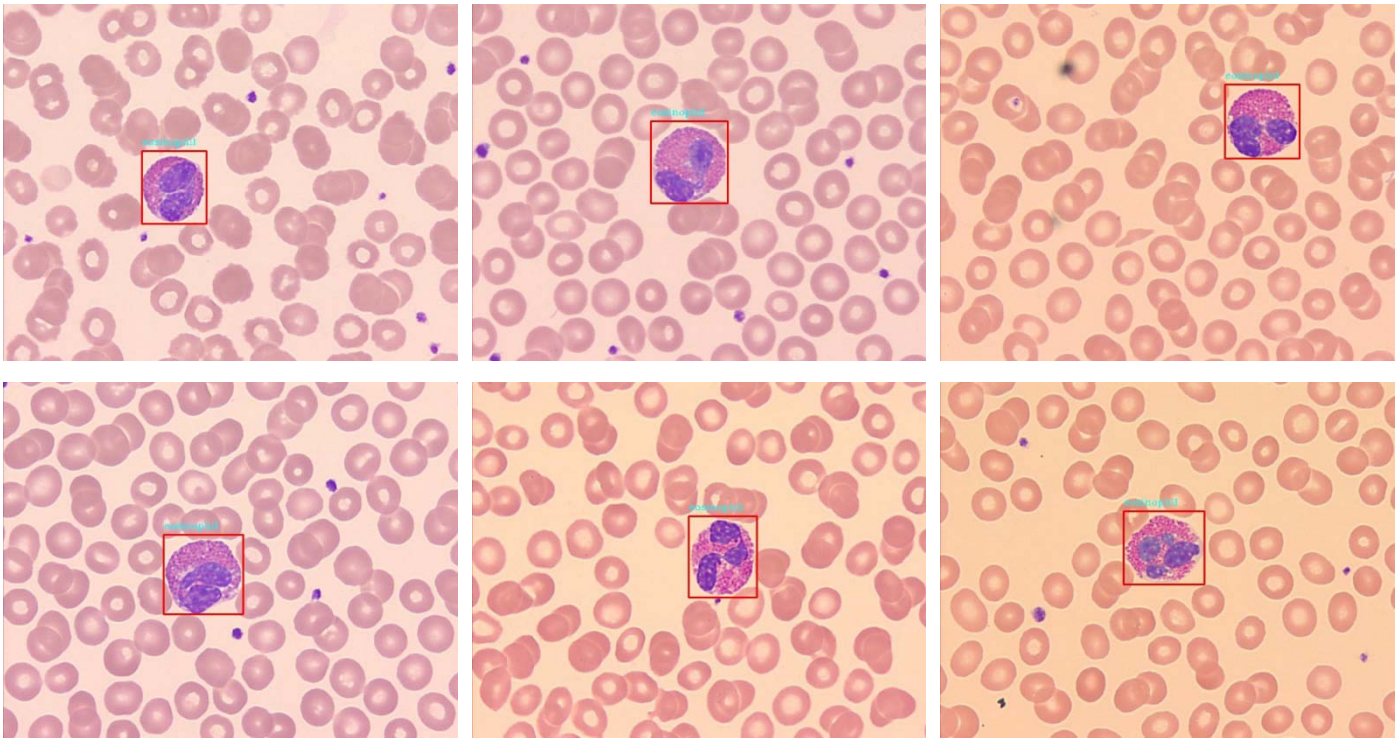
(F) detection results of segmented neutrophil using SSD300×300_Smin=0.2 model



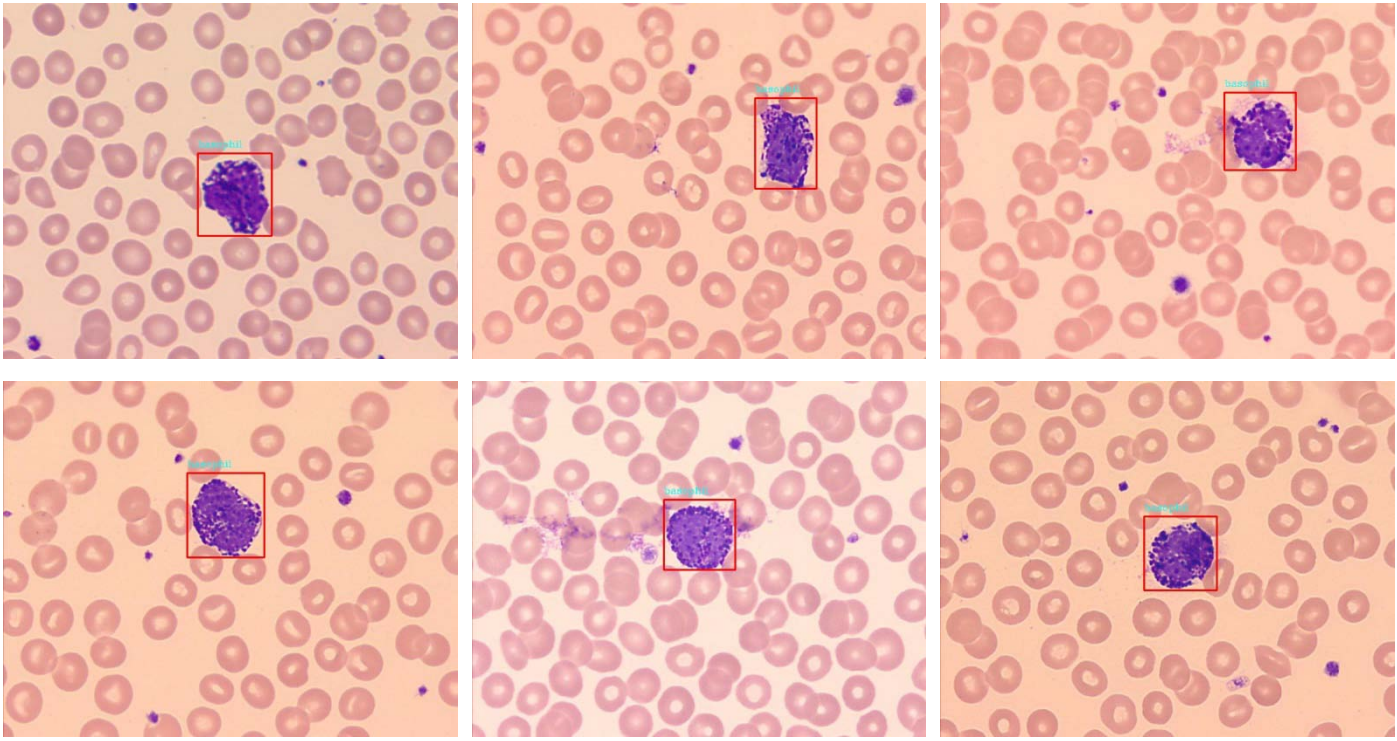
(G) detection results of lymphocyte using SSD300×300_Smin=0.2 model



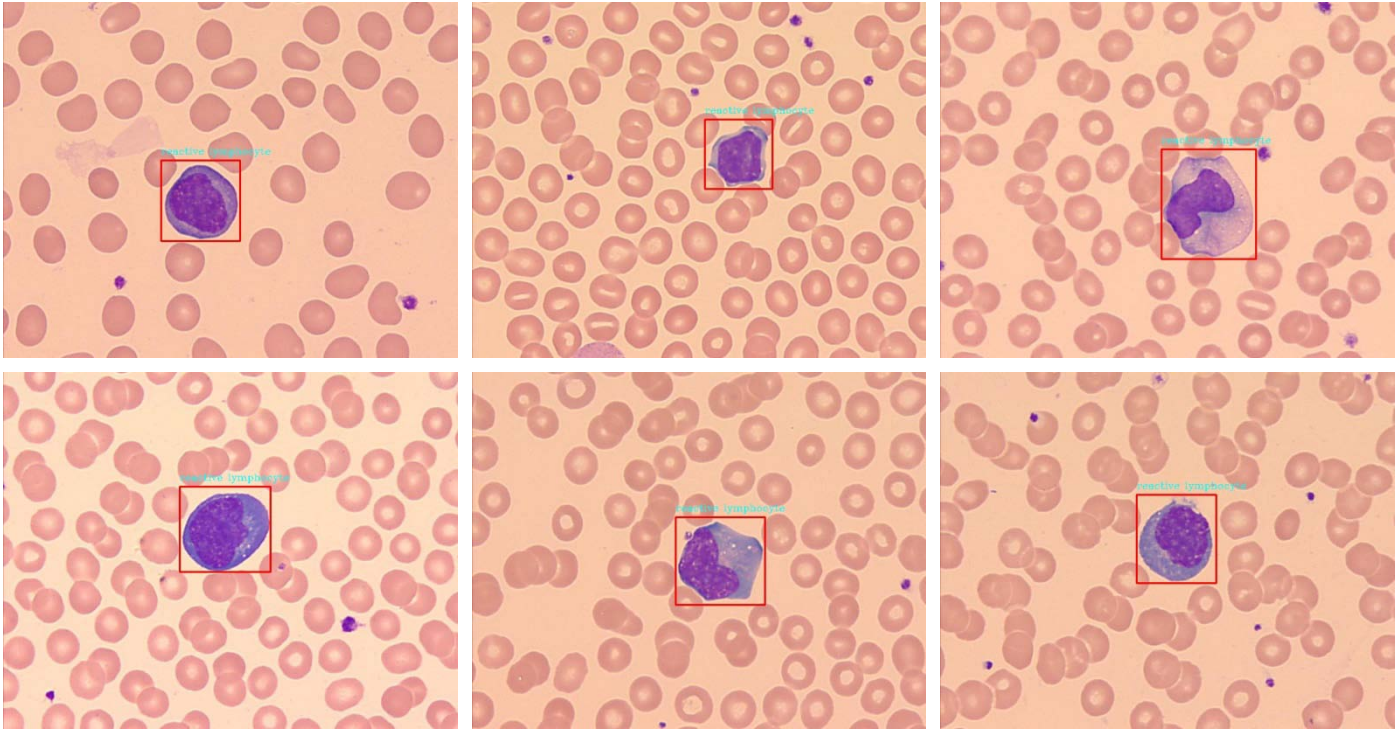
(H) detection results of monocyte using SSD300×300_Smin=0.2 model



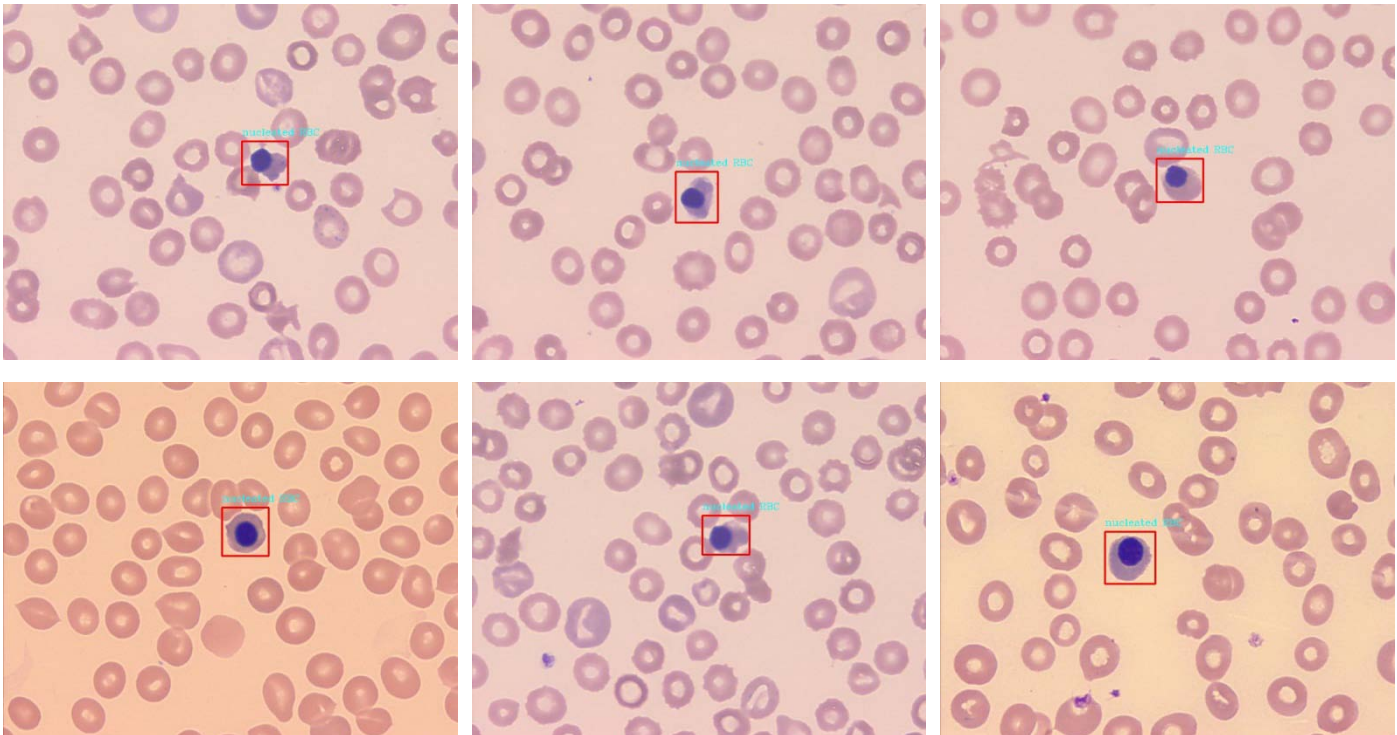
(I) detection results of eosinophil using SSD300×300_Smin=0.2 model



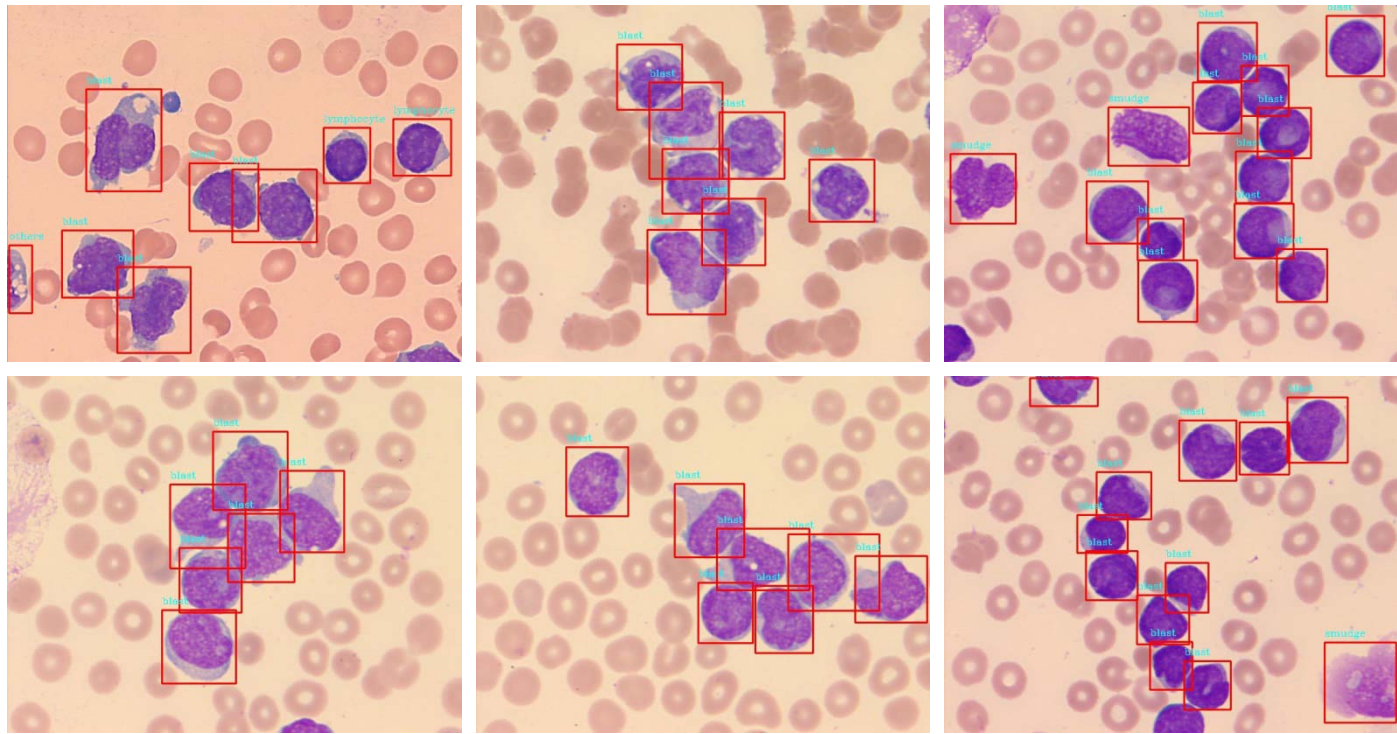
(J) detection results of basophil using SSD300×300_Smin=0.2 model



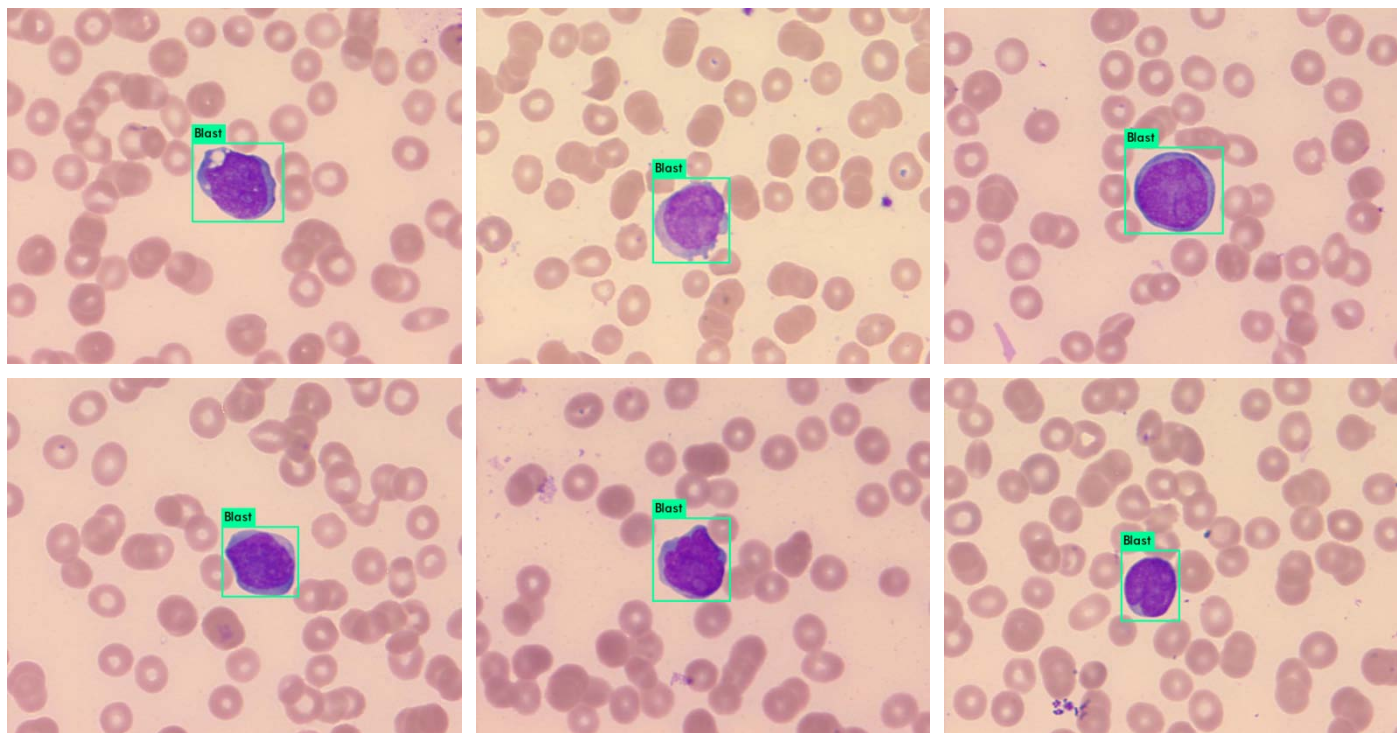
(K) detection results of reactive lymphocyte using SSD300×300_Smin=0.2 model



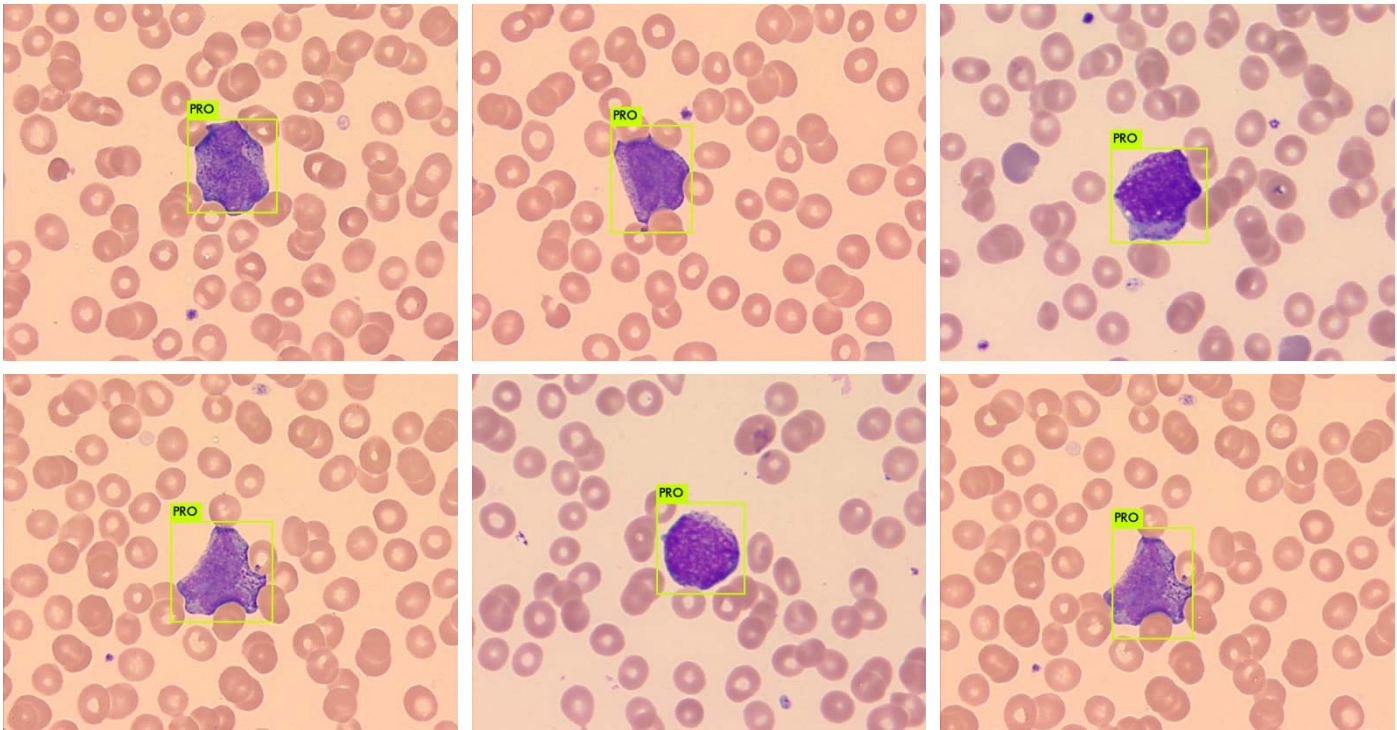
(L) detection results of small cells (NRBC) using SSD300×300_Smin=0.2 model



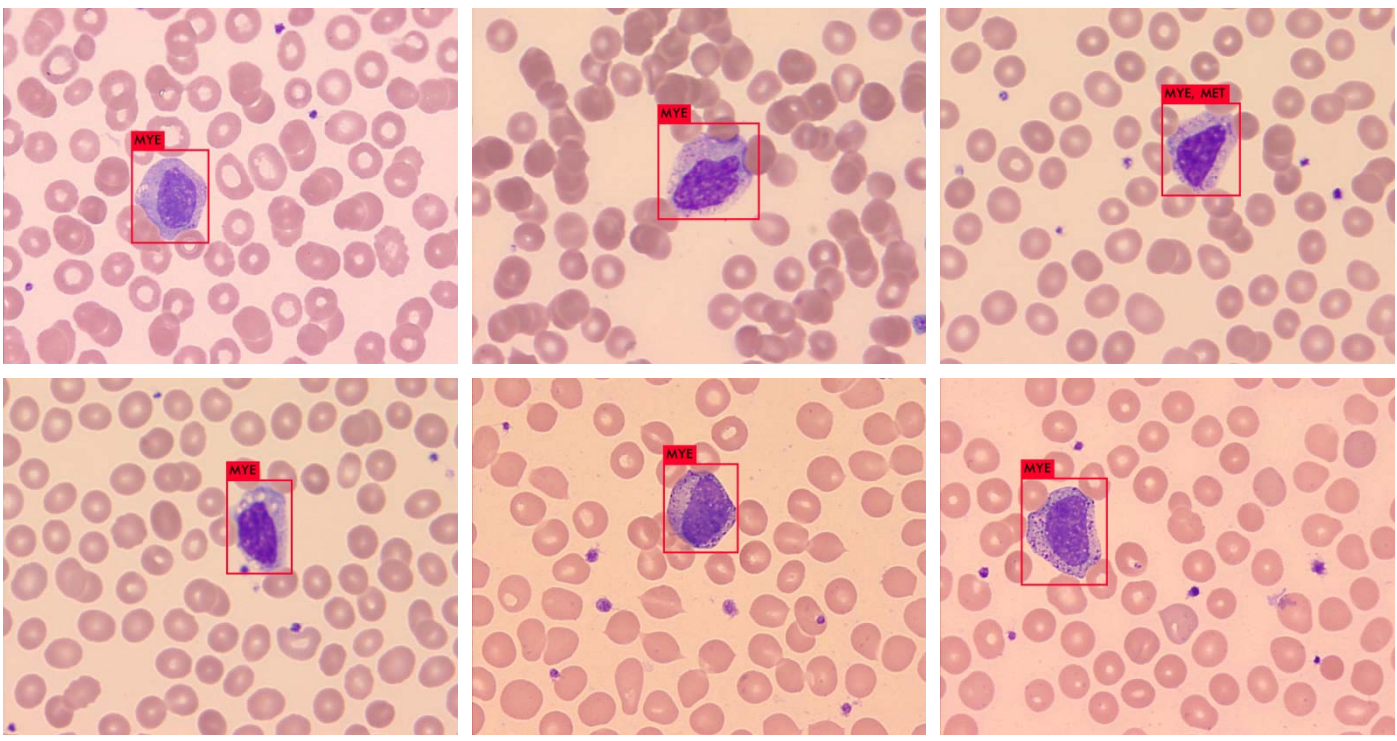
(M) detection results of dense scenes (linked cells) using SSD300×300_Smin=0.2 model



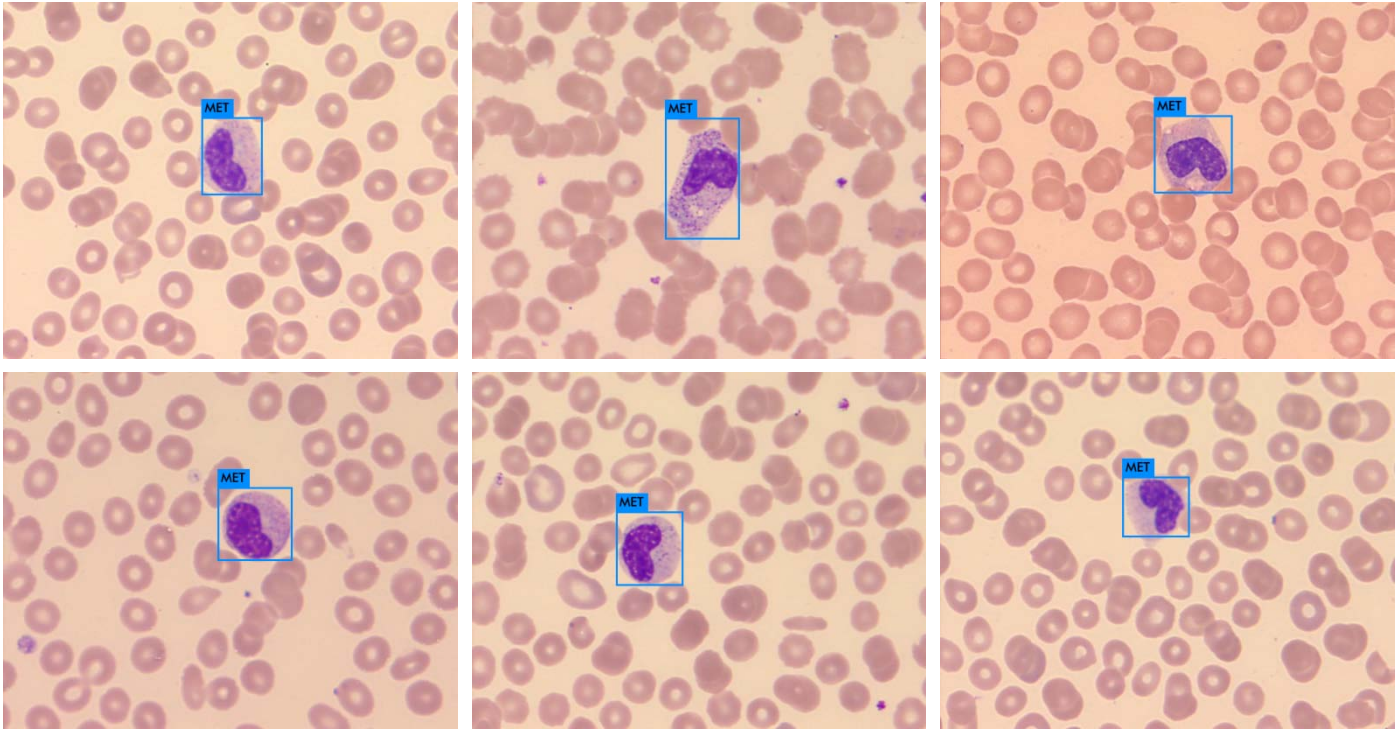
(N) detection results of blast using YOLOv3_320×320 model



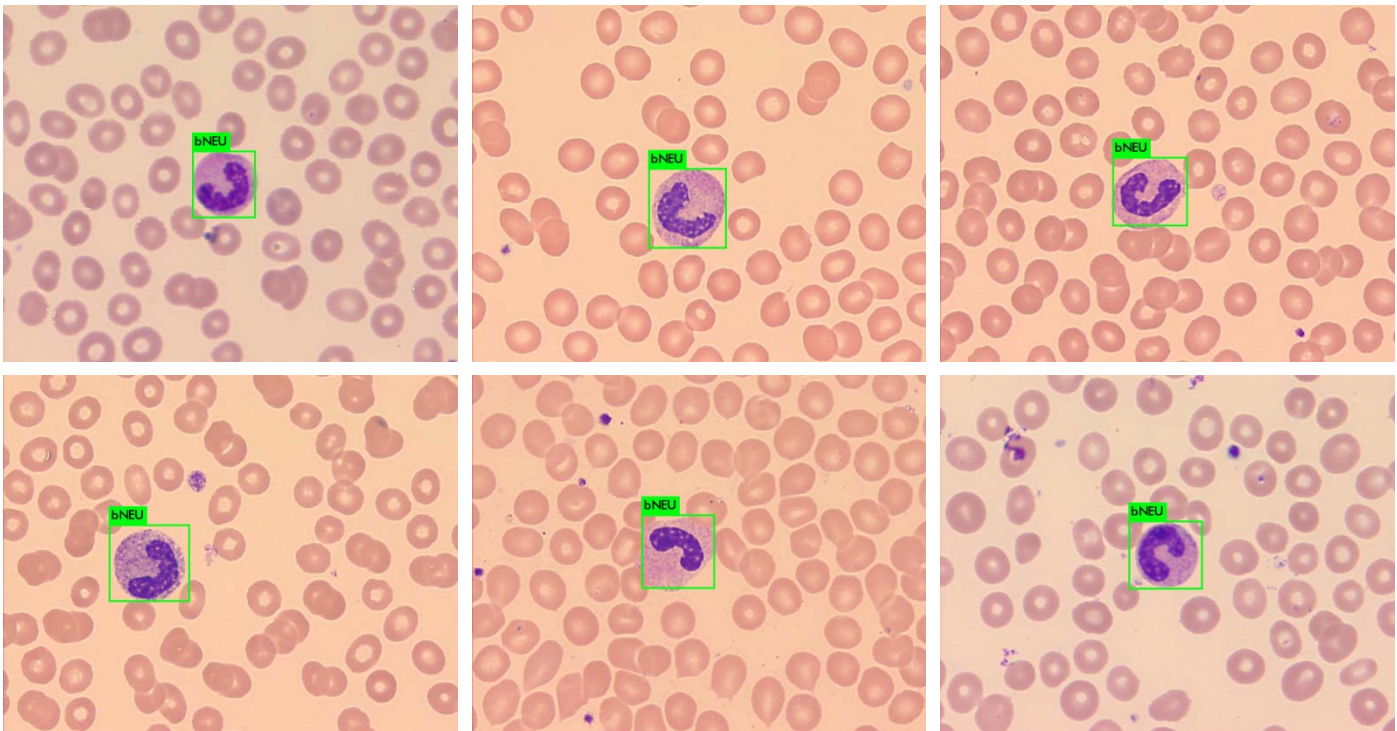
(O) detection results of promyelocyte using YOLOv3_320x320 model



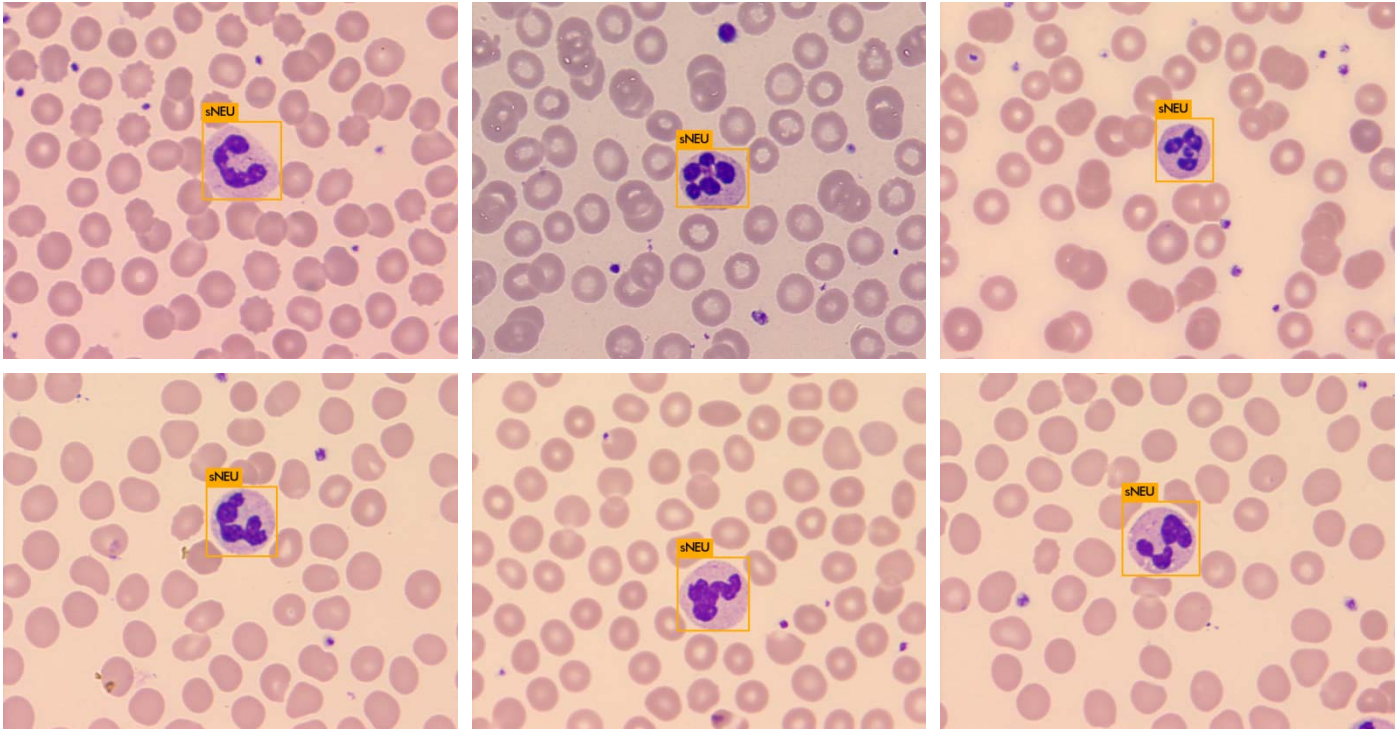
(P) detection results of myelocyte using YOLOv3_320x320 model



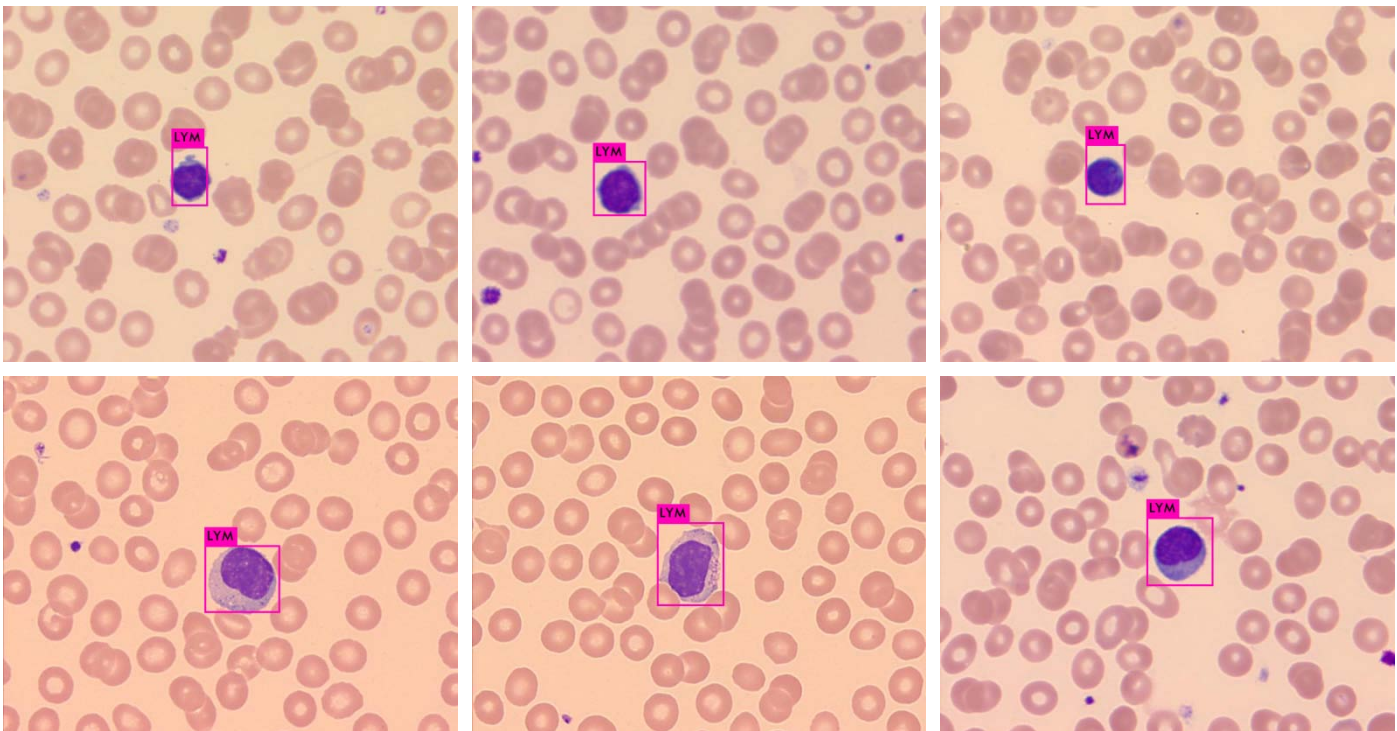
(Q) detection results of metamyelocyte using YOLOv3_320x320 model



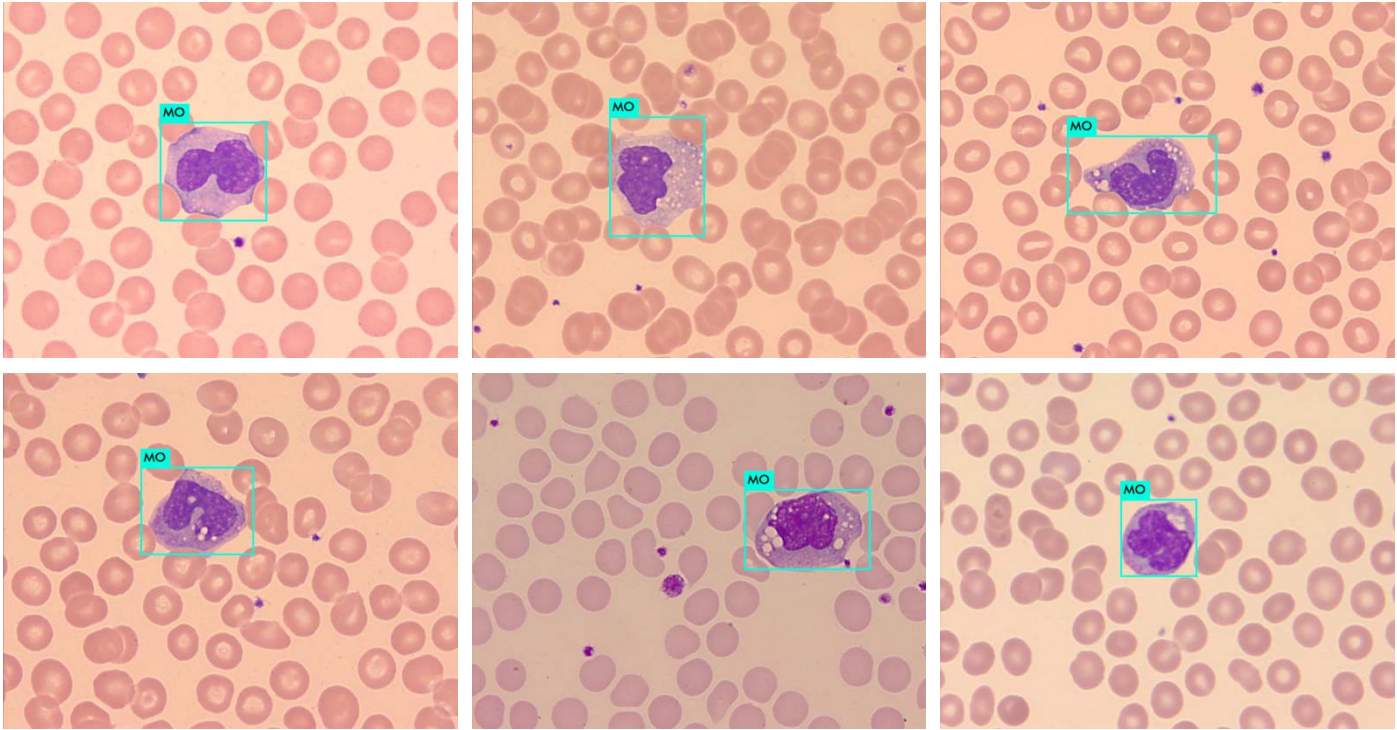
(R) detection results of band neutrophil using YOLOv3_320x320 model



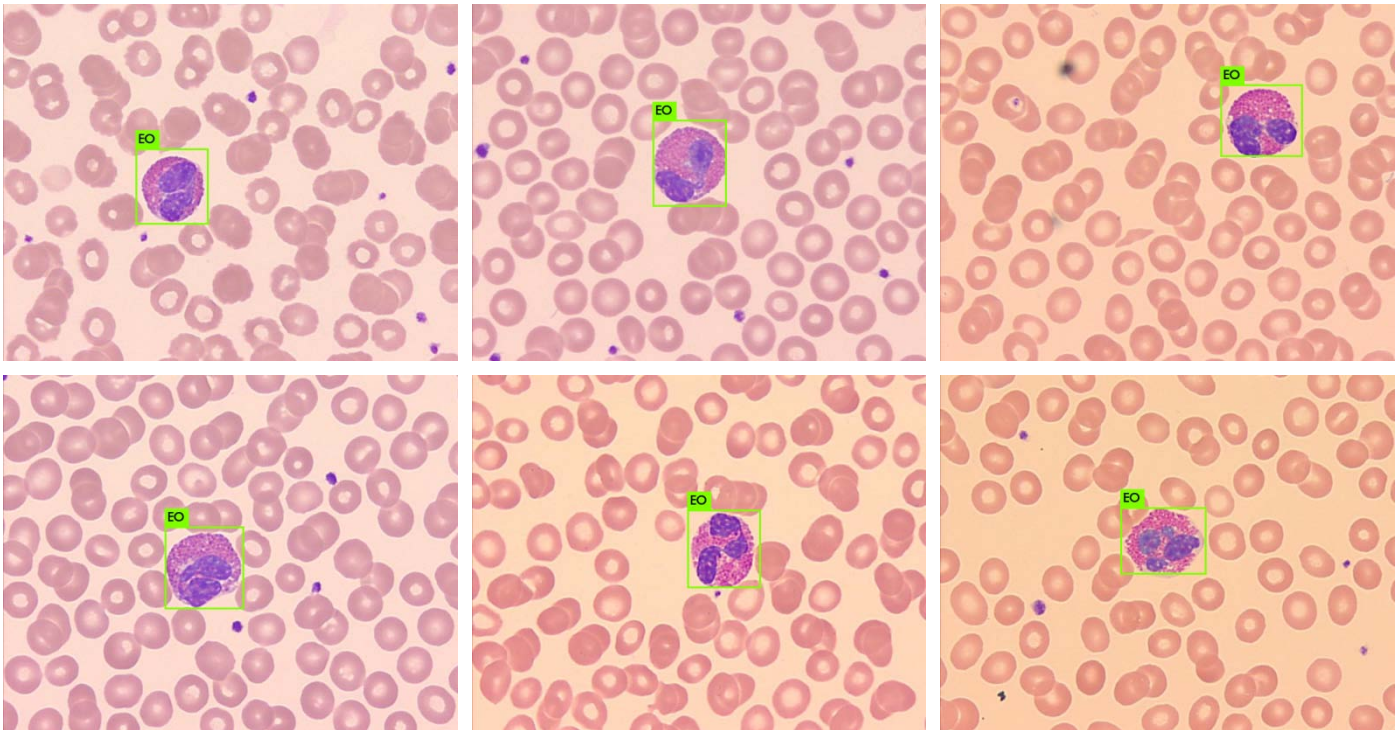
(S) detection results of segmented neutrophil using YOLOv3_320×320 model



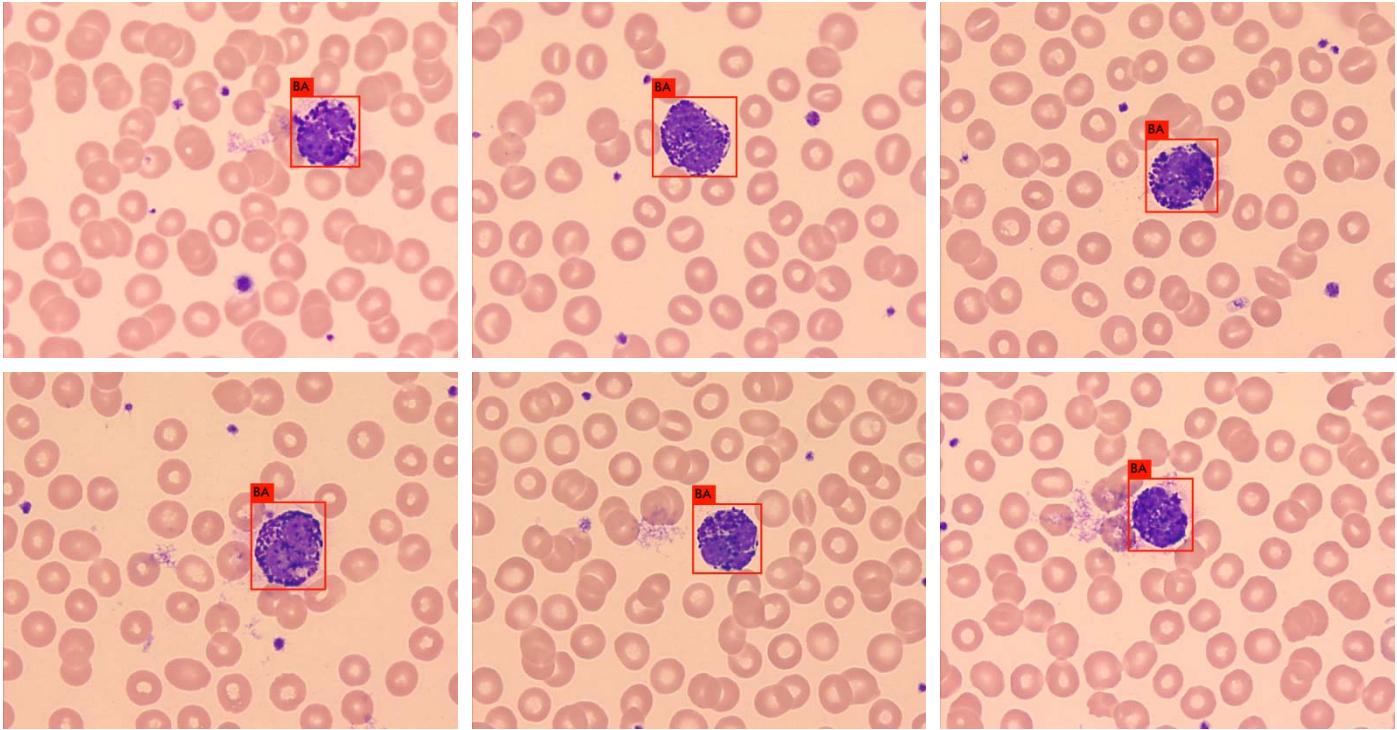
(T) detection results of lymphocyte using YOLOv3_320×320 model



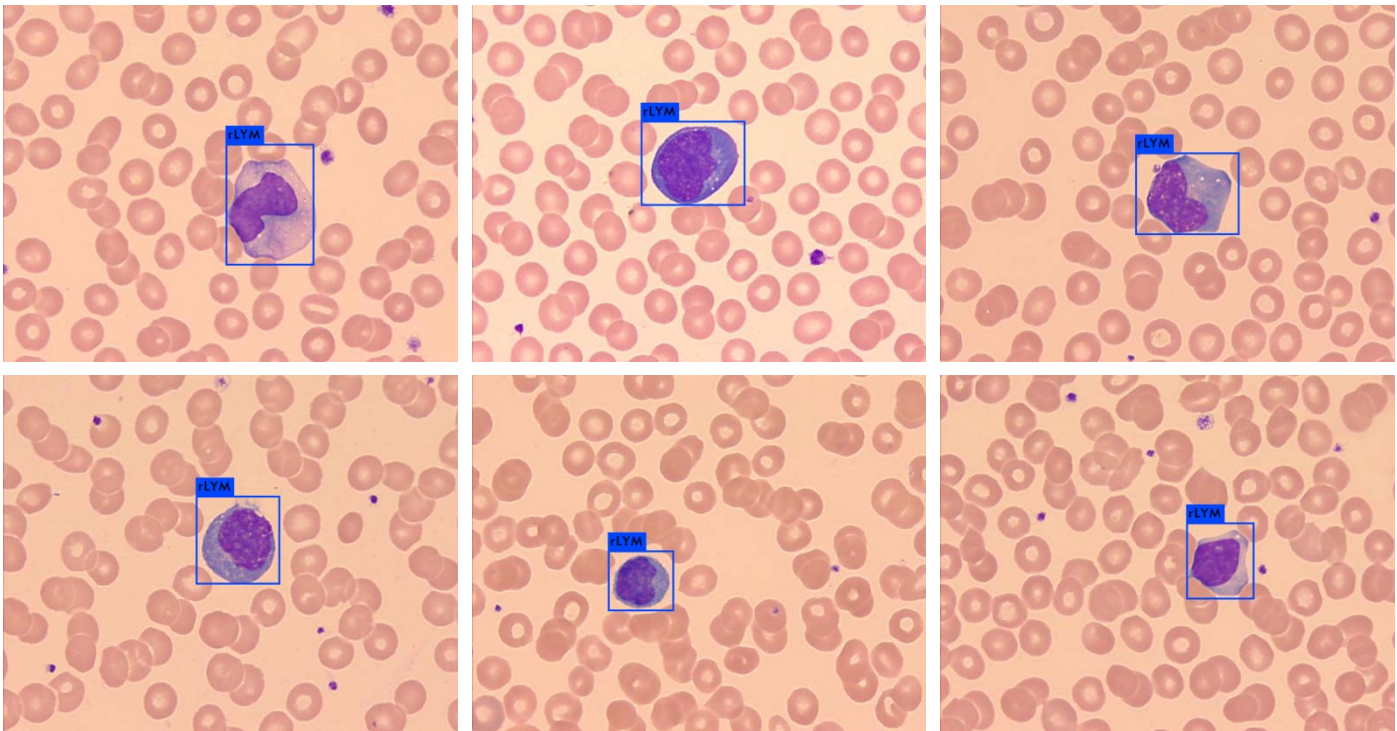
(U) detection results of monocyte using YOLOv3_320×320 model



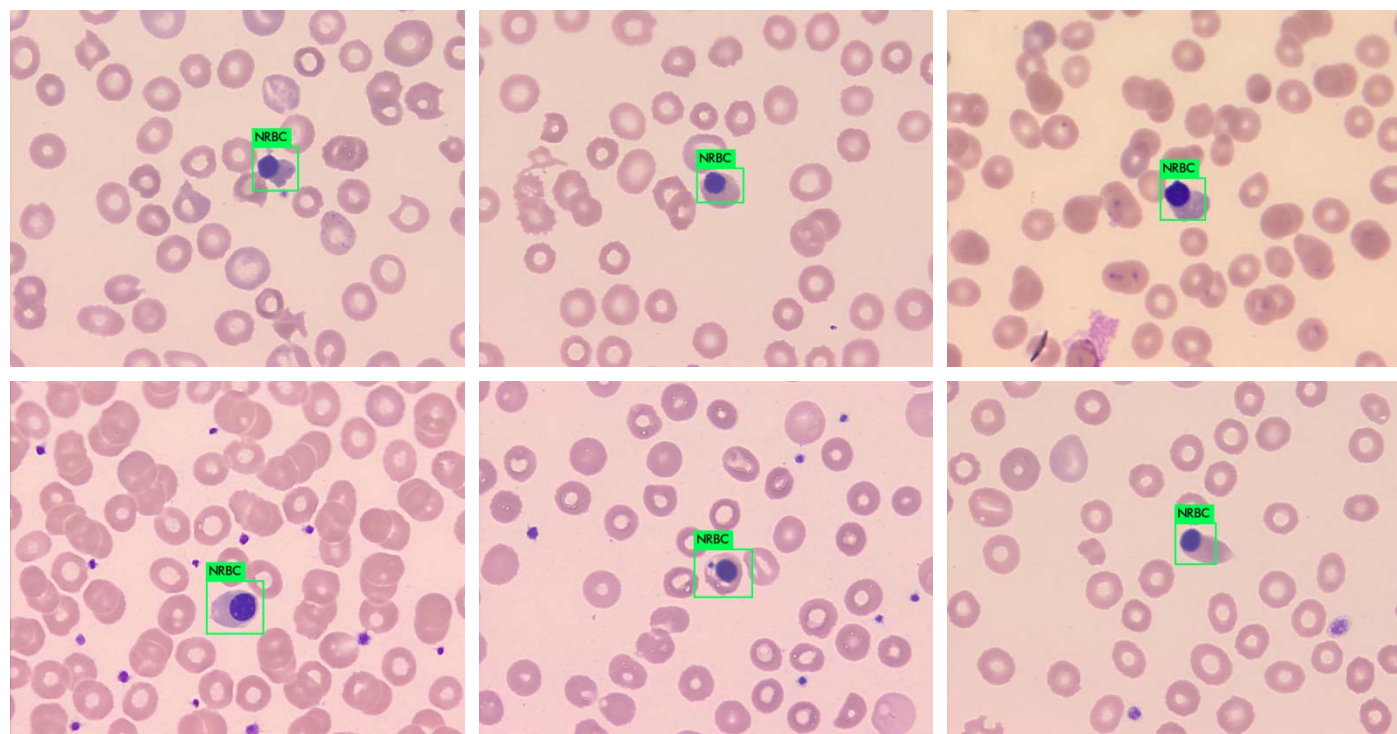
(V) detection results of eosinophil using YOLOv3_320×320 model



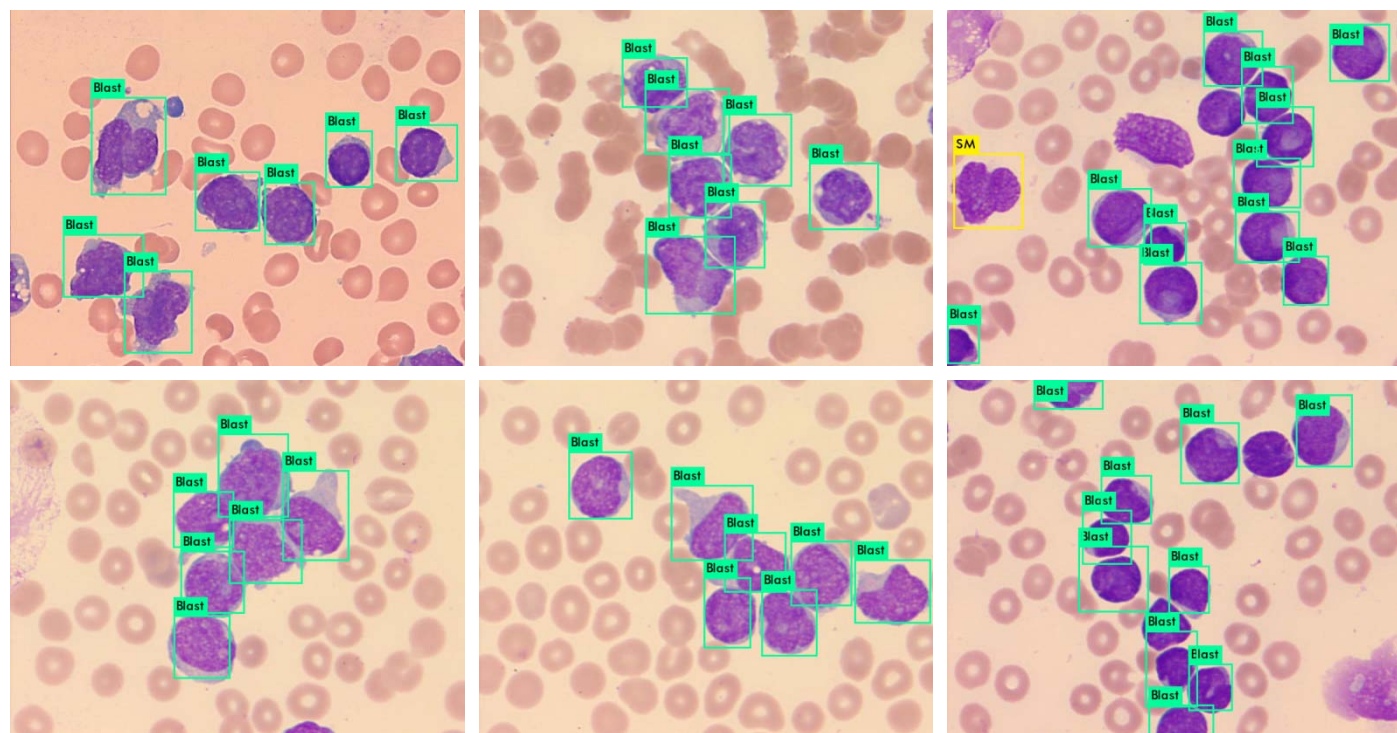
(W) detection results of basophil using YOLOv3_320×320 model



(X) detection results of reactive lymphocyte using YOLOv3_320×320 model



(Y) detection results of small cells (NRBC) using YOLOv3_320×320 model



(Z) detection results of dense scenes (linked cells) using YOLOv3_320×320 model