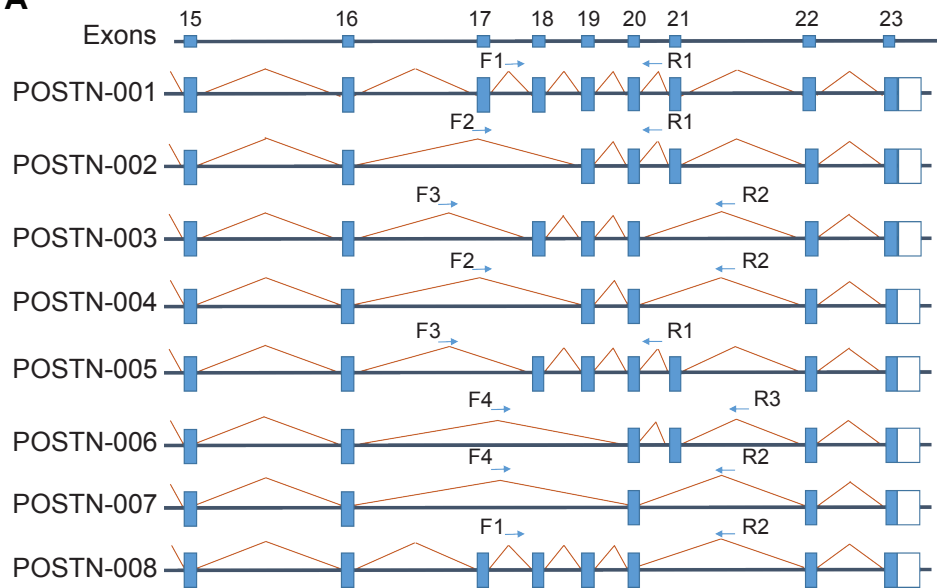
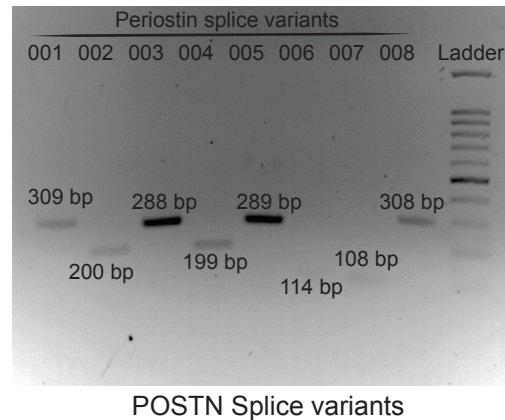


Supplemental Figure 2

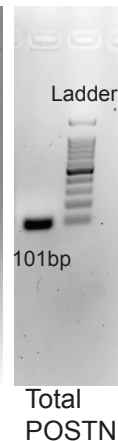
A



B



C



Supplemental Figure 2: POSTN isoforms location and amplification. A. Nucleotide sequence of the C-terminal domain of human POSTN isoforms 1-8. Exons (boxed) 15 to 23 (up to the stop codon) are shown. Note that excision of any exon from exon 17 to exon 21 does not induce a frameshift. Moreover, location of forward and reverse primer sets flanking each exon for a particular splice variant that were used for PCR are shown. F: forward primer, R: reverse primer. B. RT-PCR and agarose gel electrophoresis showing specific bands corresponding to amplicon length based on isoform-specific primer sets. C. RT-PCR and agarose gel electrophoresis showing specific band corresponding to amplicon length based on sequence-specific primers.