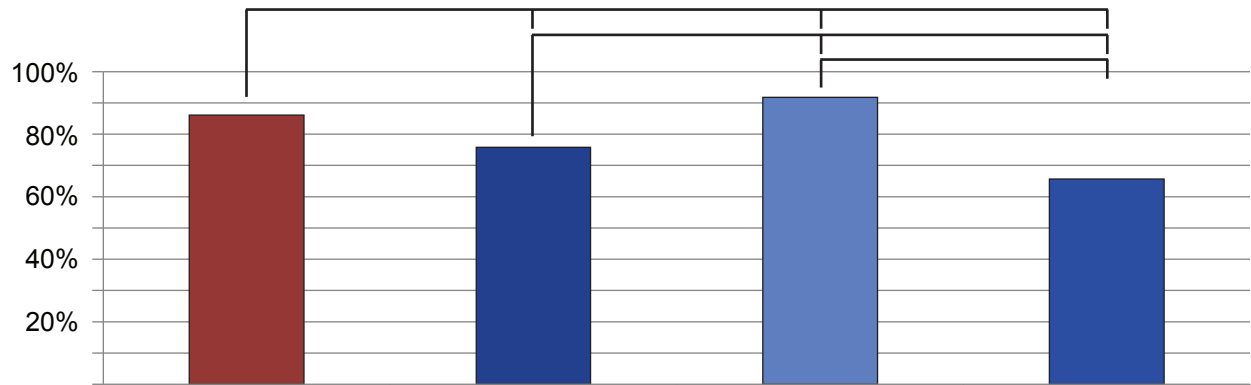


Percentage of developed individuals



Maternal Genotype	<i>Wild Type</i>	$\frac{tbc1^{null}}{tbc1^{null}}$	<i>Wild Type</i>	$\frac{tbc1^{null}}{tbc1^{null}}$
Paternal Genotype	<i>Wild Type</i>	$\frac{tbc1^{null}}{tbc1^{null}}$	$\frac{tbc1^{null}}{tbc1^{null}}$	<i>Wild Type</i>
n	1944	1046	183	211