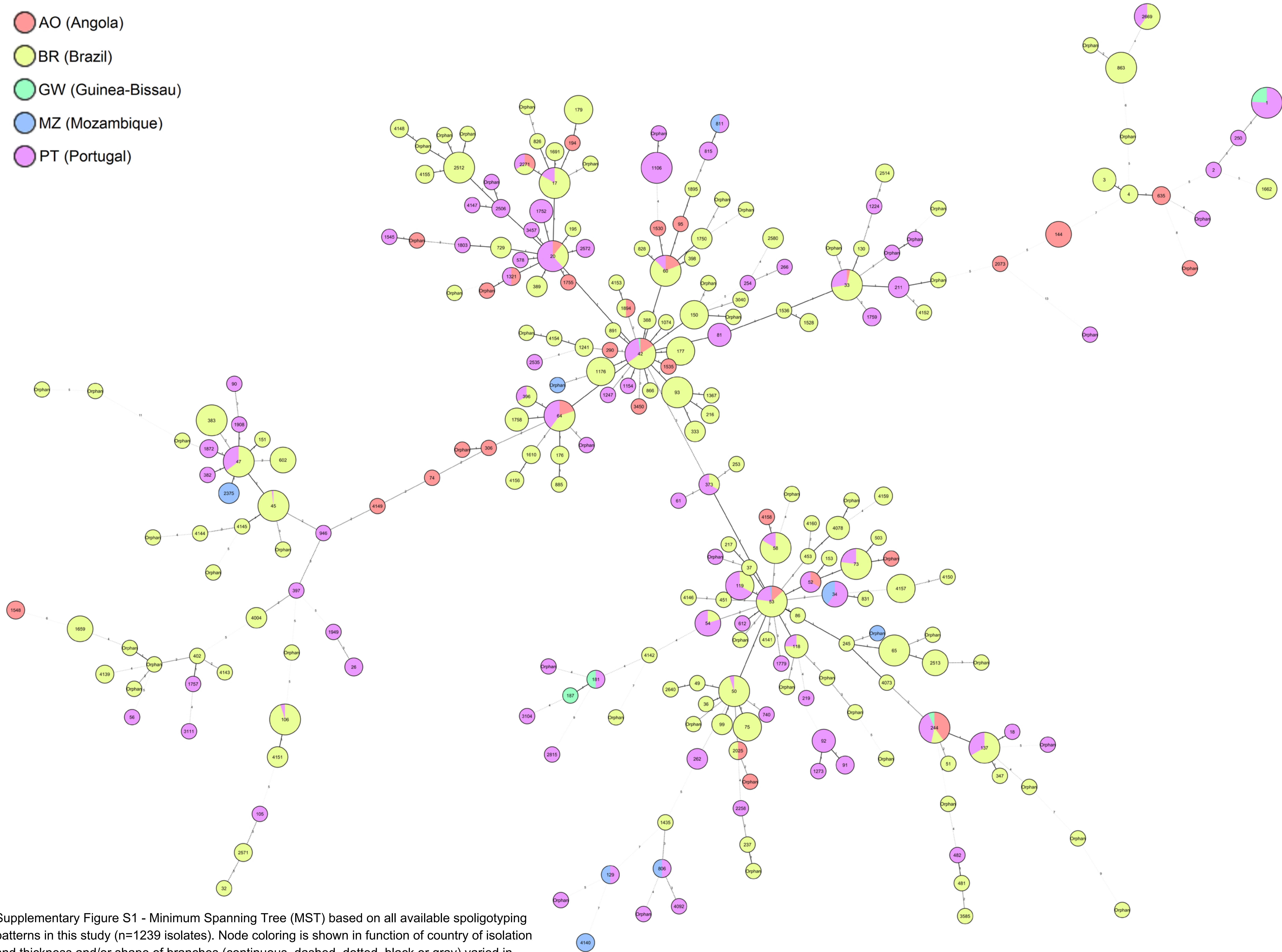


- AO (Angola)
- BR (Brazil)
- GW (Guinea-Bissau)
- MZ (Mozambique)
- PT (Portugal)



Supplementary Figure S1 - Minimum Spanning Tree (MST) based on all available spoligotyping patterns in this study (n=1239 isolates). Node coloring is shown in function of country of isolation and thickness and/or shape of branches (continuous, dashed, dotted, black or gray) varied in function of spacer changes between patterns. The number of changes is indicated on branches.