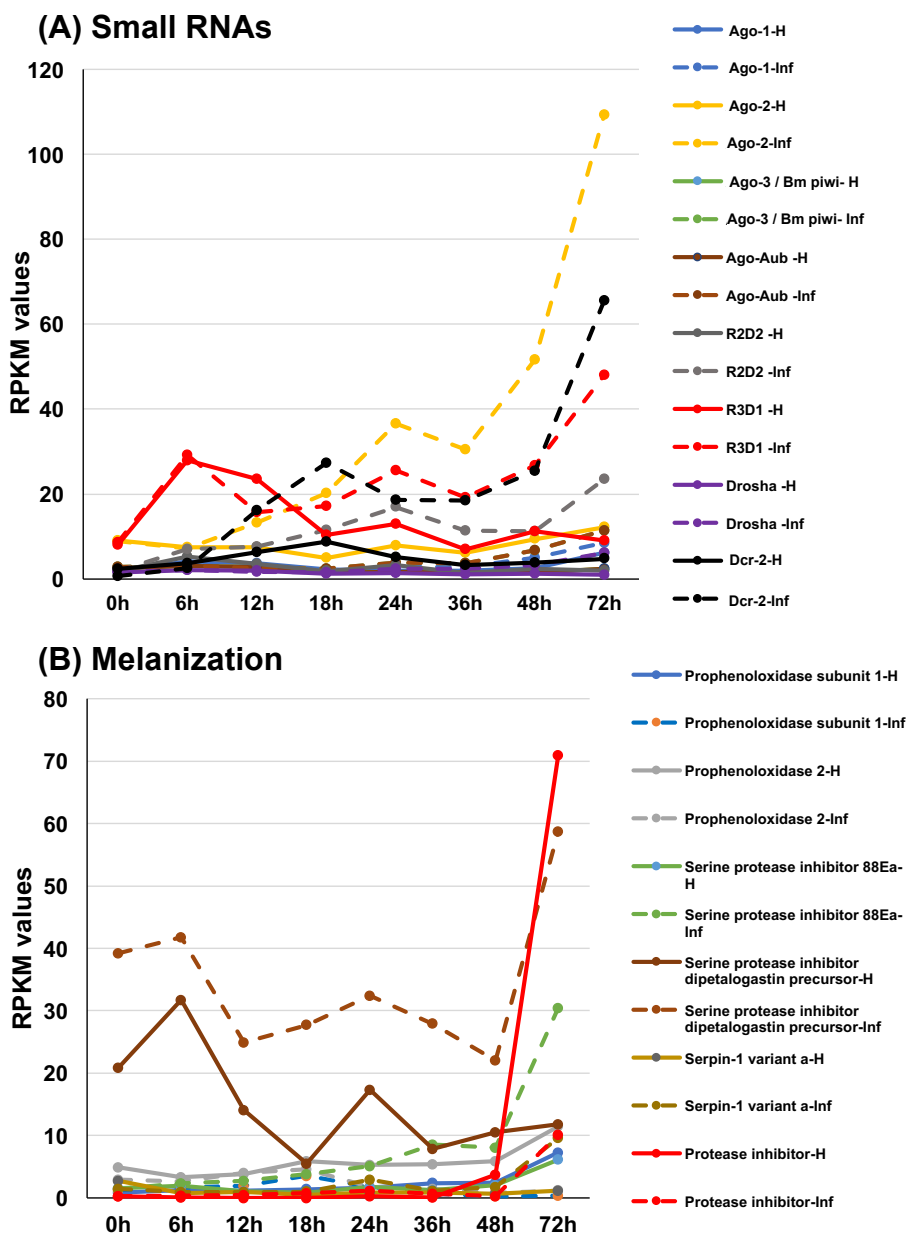


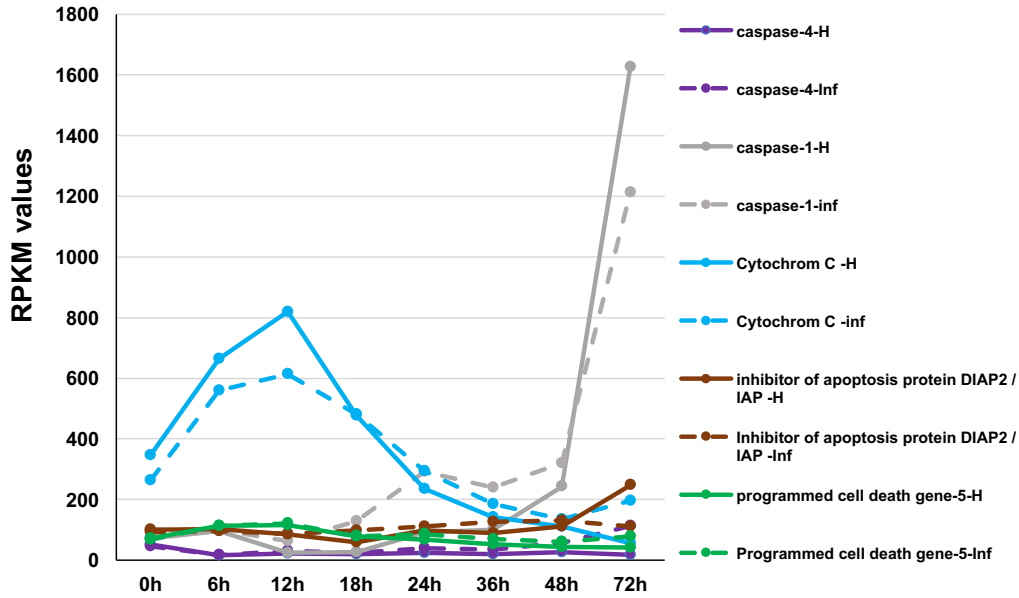
## Figure S1.

Expression profiles of *T. ni* orthologs associated with various immune-related pathways across times postinfection. Orthologs of a variety of immune response genes from yeasts, human, *D. melanogaster*, *B. mori*, *S. exigua*, or *S. frugiperda* were identified in the *T. ni* genome (23) and transcript data from infected and control larval midgut were compared. The graphs illustrate transcriptional profiles of various antiviral and immune pathway genes (panels A-L) in *T. ni* midgut samples at various times (0-72 h) post infection. The expression patterns of immune genes in uninfected (solid lines) and infected (dashed lines) midgut samples are shown. Genes with RPKM values of <5 across all time points in uninfected and infected midgut samples were not included on the graphs as these data suggest very low or no expression in the midgut.

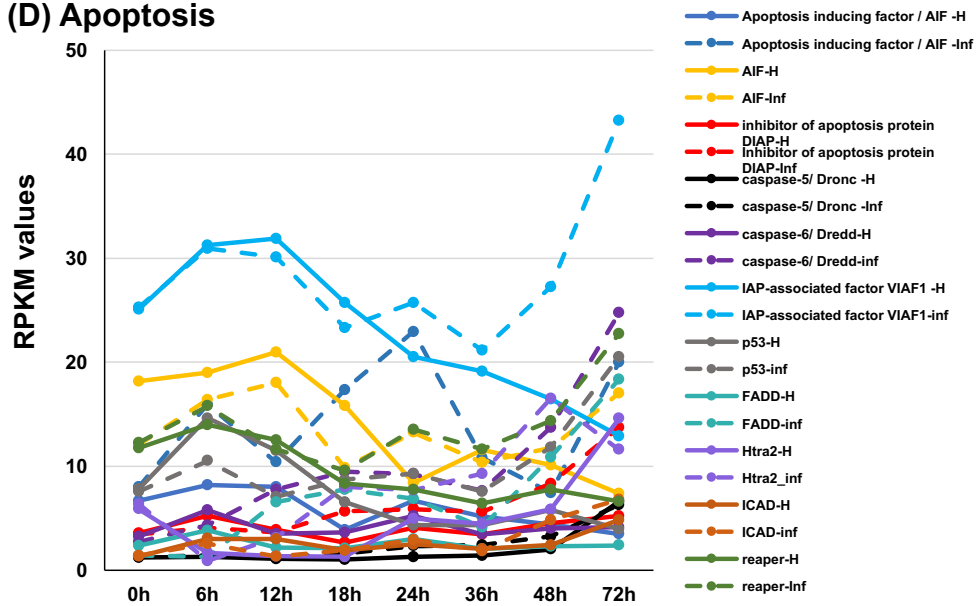


(Figure S1)

(C) Apoptosis

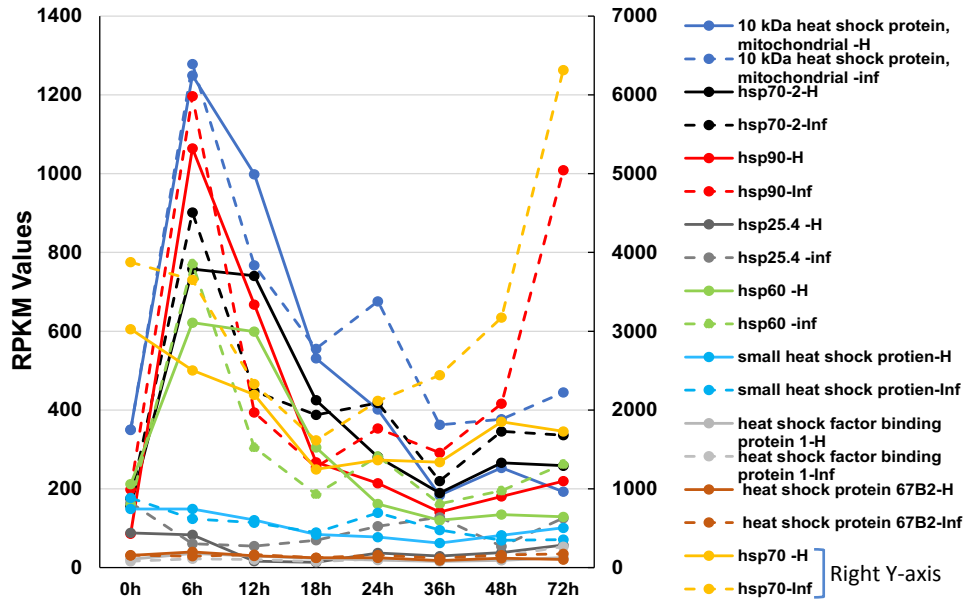


(D) Apoptosis

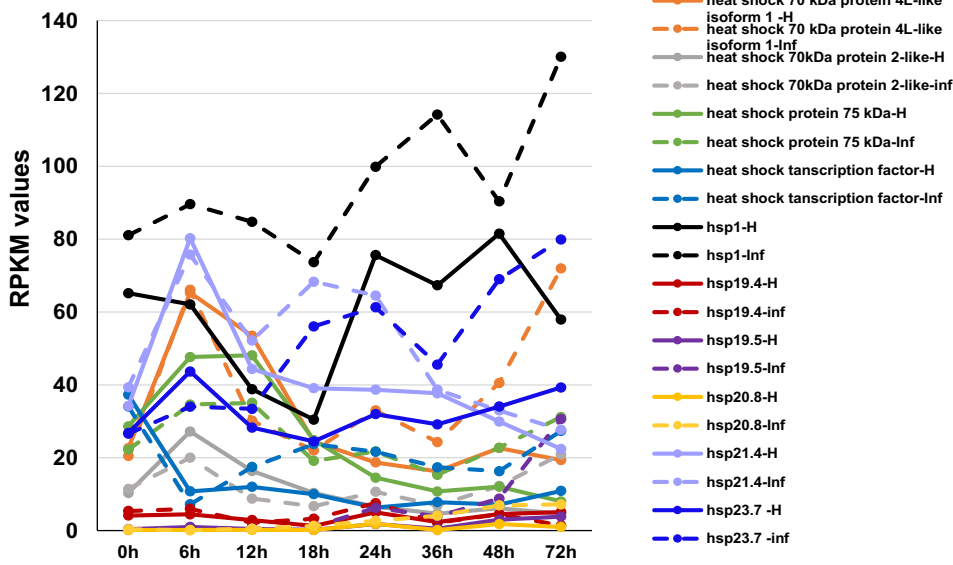


(Figure S1)

(E) Heat shock proteins

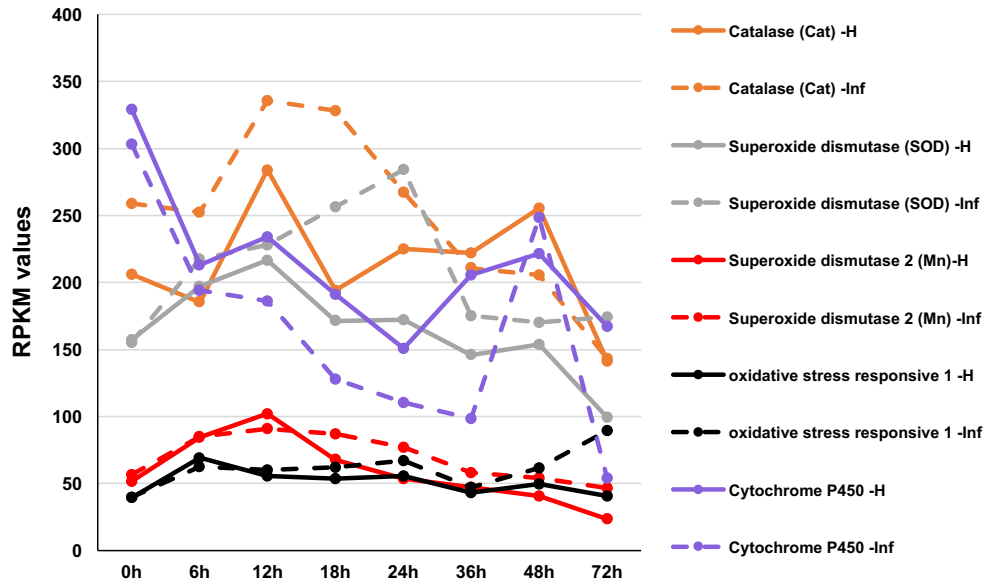


(F) Heat shock proteins

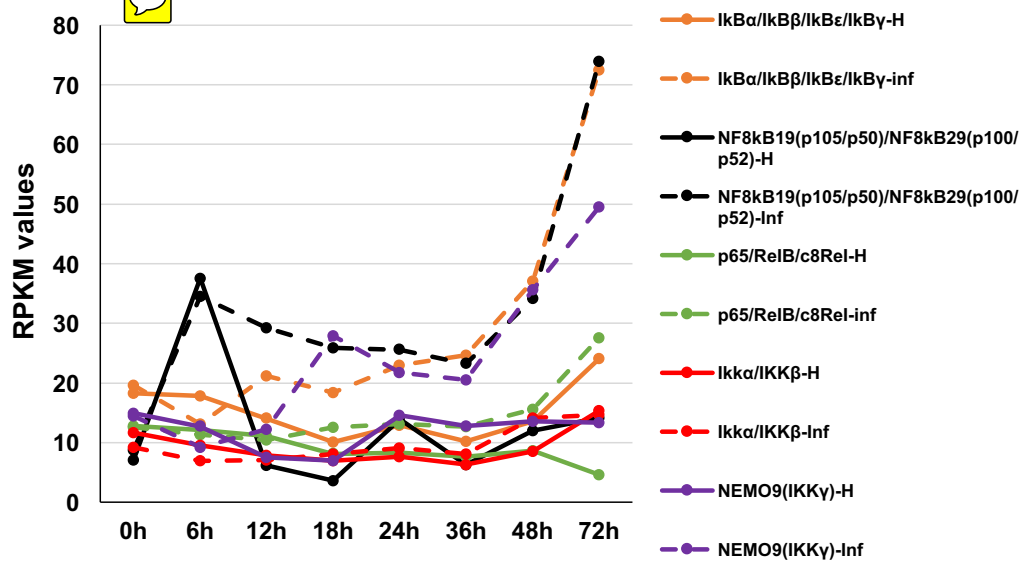


(Figure S1)

(G) Reactive oxygen species

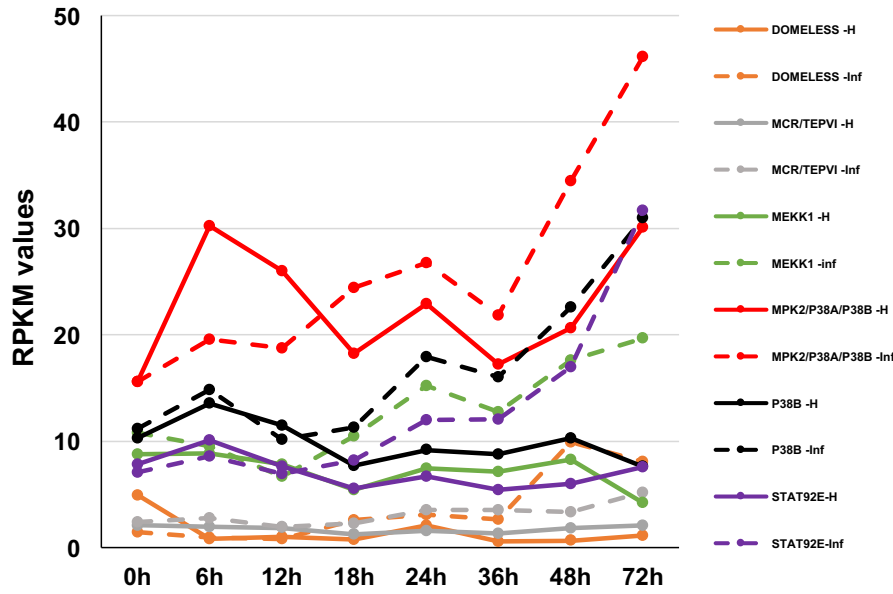


(H) NF- $\kappa$ B-I $\kappa$ B

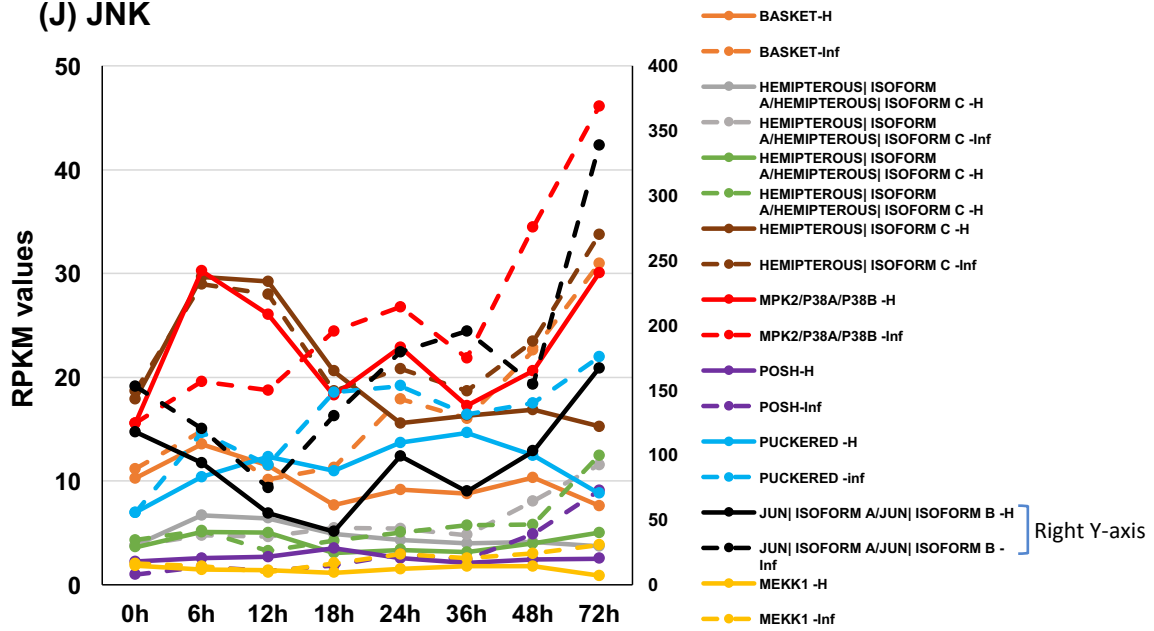


(Figure S1)

(I) JAK/STAT

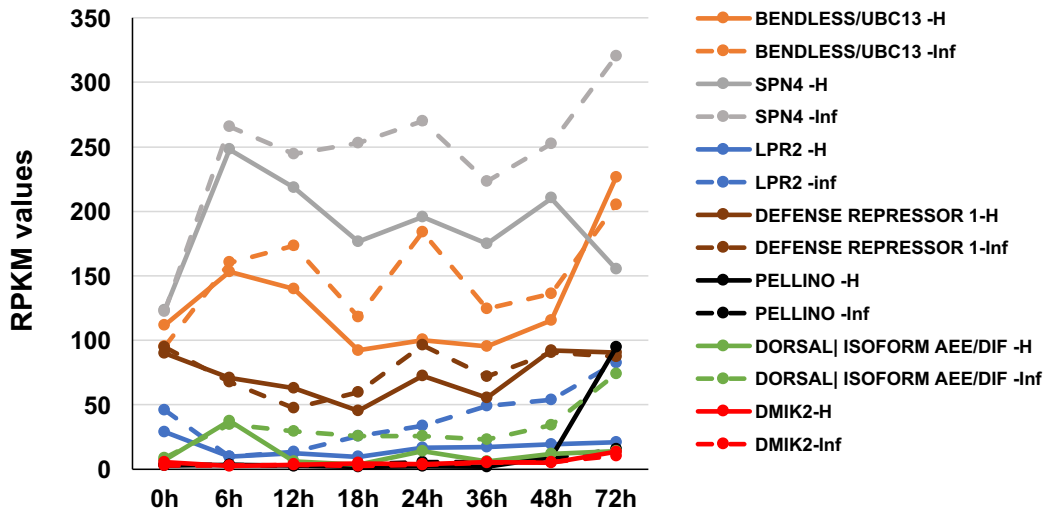


(J) JNK



(Figure S1)

(K) IMD and TOLL



(L) IMD and TOLL

