

Supplementary Methods

Literature Search

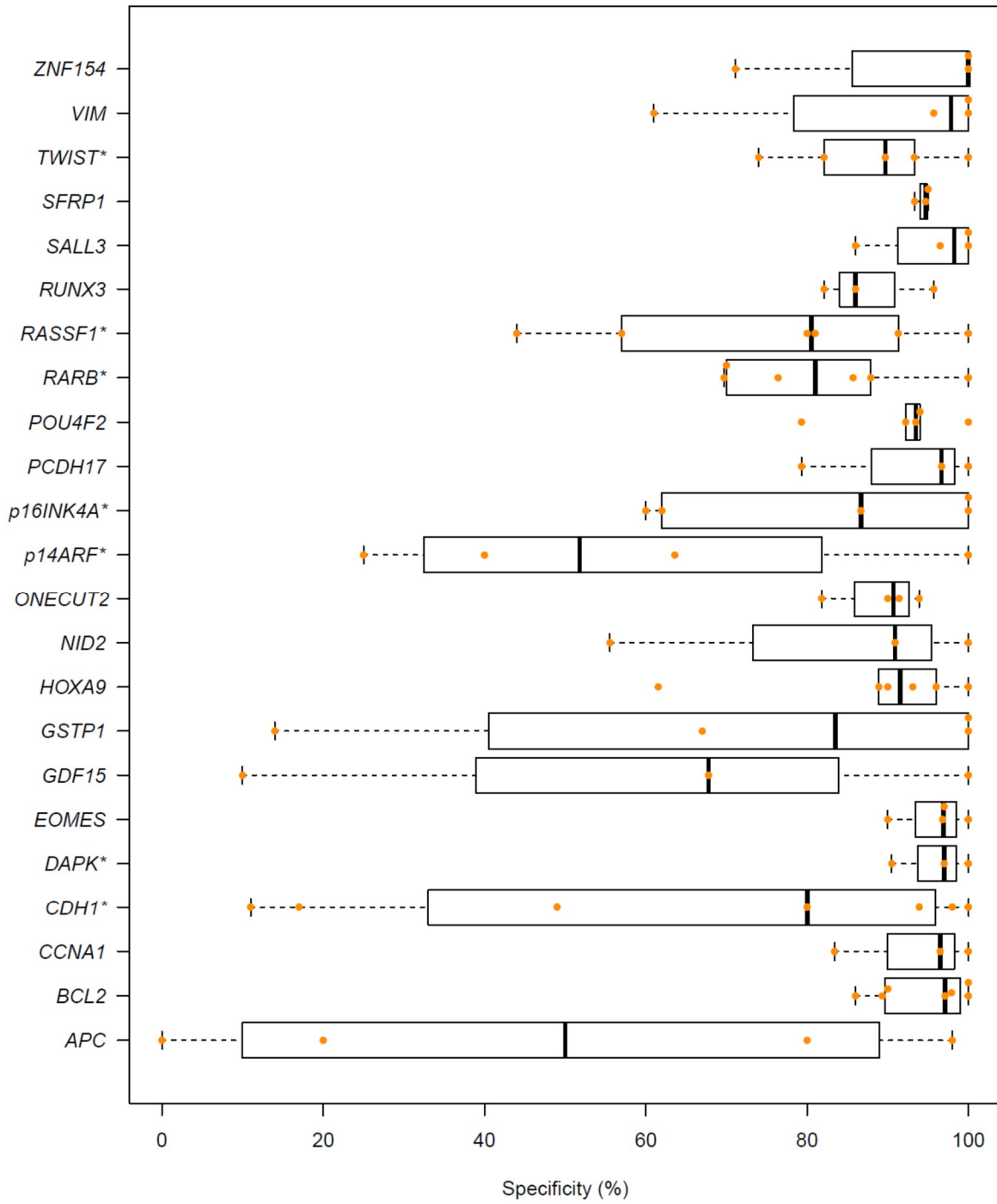
A systematic search was conducted in the PubMed and Embase databases up to February 2019. Search terms used were: “(((Bladder cancer) OR urothelial carcinomas) AND methylation) AND urine”, yielding 169 and 239 articles from PubMed and Embase, respectively; “((prostate cancer) AND methylation) AND urine”, yielding 91 and 162 articles from PubMed and Embase, respectively; “(((Upper urinary tract carcinoma) OR Upper urinary tract cancer) AND methylation) AND urine”, yielding 9 and 0 articles from PubMed and Embase, respectively; and “(((Kidney cancer) OR Renal cancer) AND methylation) AND urine”, yielding 40 and 22 articles from PubMed and Embase, respectively.

Selection of Studies

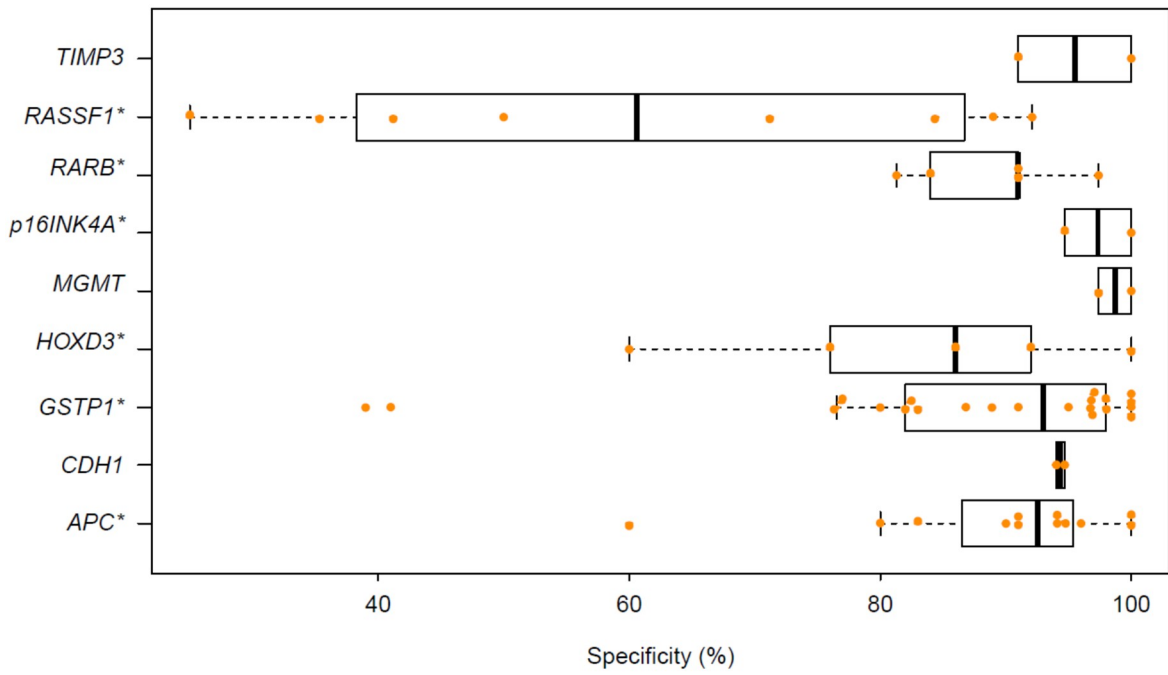
One author (LKL) screened all published original articles appearing in the above searches for eligibility. Studies using DNA methylation biomarkers for detection of bladder cancer, prostate cancer, kidney cancer, or upper urinary tract cancer in urine were considered eligible. Studies were excluded if they were not original research papers; used a language other than English; or did not report biomarker performance in terms of sensitivity, specificity, or area under the curve (AUC); or reported the performance of DNA methylation markers only in combination with other factors (such as other DNA mutation markers and clinical data). Meeting the inclusion criteria were 57, 27, 2, and 5 articles for bladder cancer, prostate cancer, upper urinary tract cancer, and kidney cancer, respectively.

Data Extraction

Two authors (LKL and CD) independently extracted data from the selected studies and disagreements were discussed until agreement was reached. The data extracted from the articles were obtained both from the primary article and supplementary data and included gene name, reference, study year, number of cases and controls, testing or validation, source of urine, urine processing method, first diagnosis or recurrence, analysis technique, sensitivity, and specificity.



Supplementary Figure S1. Reported specificities of DNA-methylation biomarkers for detection of primary bladder cancer. *, Inconsistent nomenclature among studies.



Supplementary Figure S2. Reported specificities of DNA-methylation biomarkers for detection of prostate cancer. *, Inconsistent nomenclature among studies.

Supplementary Table S1. Bladder cancer.

Biomarker	Primary/Recurrence	Dataset	Sample Processing	Cases (n)	Controls (n)	Pathology	Control Population	Method	Sens. (%)					Spec. (%)			AUC	Ref.	Year		
									Ta	Cis/tis	T1	≥T2	Ta-T1	LG/G2	HG/G3	PUNLMP/G1				Overall	
<i>TWIST1, NID2</i>	Primary	Training	Sedimentation	48	121	Ta-T2, LG, HG	Mixed Urologic Disease	q-MSP	80	100	100	83	Ta-T1	80	91		88	94		[15]	2010
<i>TWIST1, NID2</i>	Primary	Validation	Sedimentation	35	57	Ta-T2, LG, HG	Mixed Urologic Disease	q-MSP	88	100	100	100	Ta-T1	89	100		94	91			2010
<i>SOX1, IRAK3, L1-MET (L1-MET hypomethylated)</i>	Recurrent	Training	Sedimentation	29	54	Ta-T1, LG, HG	Ta-T1, LG, HG	Pyrosequencing					Ta-T1				86	89	0.90	[32]	2014
<i>SOX1, IRAK3, L1-MET (L1-MET hypomethylated)</i>	Recurrent	Validation	Sedimentation	134	25	Ta-T1, LG, HG	Ta-T1, LG, HG	Pyrosequencing					Ta-T1				80	97	0.95		2014
<i>EOMES</i>	Primary	Training	Sedimentation	58	90	Ta-T4, LG, HG	Mixed urologic diseases and healthy	qMSP					Ta-T1				79.31	90.00	0.906		2016
<i>GDF15</i>	Primary	Training	Sedimentation	58	90	Ta-T4, LG, HG	Mixed urologic diseases and healthy	qMSP					Ta-T1				67.24	67.78	0.711		2016
<i>NID2</i>	Primary	Training	Sedimentation	58	90	Ta-T4, LG, HG	Mixed urologic diseases and healthy	qMSP					Ta-T1				82.76	55.56	0.703		2016
<i>PCDH17</i>	Primary	Training	Sedimentation	58	90	Ta-T4, LG, HG	Mixed urologic diseases and healthy	qMSP					Ta-T1				50.00	96.67	0.813	[11]	2016
<i>POU4F2</i>	Primary	Training	Sedimentation	58	90	Ta-T4, LG, HG	Mixed urologic diseases and healthy	qMSP					Ta-T1				91.38	92.22	0.921		2016
<i>TCF21</i>	Primary	Training	Sedimentation	58	90	Ta-T4, LG, HG	Mixed urologic diseases and healthy	qMSP					Ta-T1				86.21	82.22	0.910		2016
<i>ZNF154</i>	Primary	Training	Sedimentation	58	90	Ta-T4, LG, HG	Mixed urologic diseases and healthy	qMSP					Ta-T1				91.38	71.11	0.892		2016

<i>POU4F2, EOMES</i>	Primary	Training	Sedimentation	58	90	Ta-T4, LG, HG	Mixed urologic diseases and healthy	qMSP					87.93	91.11	0.930	2016
<i>POU4F2, PCDH17</i>	Primary	Training	Sedimentation	58	90	Ta-T4, LG, HG	Mixed urologic diseases and healthy	qMSP					91.38	93.33	0.923	2016
<i>POU4F2, PCDH17, GDF15</i>	Primary	Training	Sedimentation	58	90	Ta-T4, LG, HG	Mixed urologic diseases and healthy	qMSP					91.38	87.78	0.914	2016
<i>POU4F2</i>	Primary	Validation	Sedimentation	72	92	Ta-T4, LG, HG	Mixed urologic diseases and healthy	qMSP	86	92.5	86.1	91.49	88.89	93.48		2016
<i>POU4F2, EOMES</i>	Primary	Validation	Sedimentation	72	92	Ta-T4, LG, HG	Mixed urologic diseases and healthy	qMSP	92	92.5	91.67	92.55	95.83	88.04		2016
<i>POU4F2, PCDH17</i>	Primary	Validation	Sedimentation	72	92	Ta-T4, LG, HG	Mixed urologic diseases and healthy	qMSP	86	92.5	86.1	91.49	88.89	94.57		2016
<i>POU4F2, PCDH17, GDF15</i>	Primary	Validation	Sedimentation	72	92	Ta-T4, LG, HG	Mixed urologic diseases and healthy	qMSP	92	96.25	97.22	93.62	97.22	75.00		2016
<i>HS3ST2</i>	Primary		Filtration (11µm)	167	105	Ta-T1 (NMIBC), LG, HG	Patients with negative cystoscopy (hematuria)	qMSP					82.0	21.20		2016
<i>SEPTIN9</i>	Primary		Filtration (11µm)	167	105	Ta-T1 (NMIBC), LG, HG	Patients with negative cystoscopy (hematuria)	qMSP					90.4	67.6	[20]	2016
<i>SLIT2</i>	Primary		Filtration (11µm)	167	105	Ta-T1 (NMIBC), LG, HG	Patients with negative cystoscopy (hematuria)	qMSP					90.4	18.1		2016

<i>HS3ST2, SEPTIN9</i>	Primary		Filtration (11µm)	167	105	Ta-T1 (NMIB C), LG, HG	Patients with negative cystoscopy (hematuria)	qMSP											20 16		
<i>HS3ST2, SLIT2</i>	Primary		Filtration (11 µm)	167	105	Ta-T1 (NMIB C), LG, HG	Patients with negative cystoscopy (hematuria)	qMSP											20 16		
<i>SEPTIN9, SLIT2</i>	Primary		Filtration (11 µm)	167	105	Ta-T1 (NMIB C), LG, HG	Patients with negative cystoscopy (hematuria)	qMSP											20 16		
<i>HS3ST2, SEPTIN9, SLIT2</i>	Primary		Filtration (11 µm)	167	105	Ta-T1 (NMIB C), LG, HG	Patients with negative cystoscopy (hematuria)	qMSP	90.5	100	100	90 (other)	89	100					20 16		
<i>HS3ST2, SLIT2, SEPTIN9</i>	Recurrent		Filtration (11 µm)	72	86	Ta-T4, LG, HG	Ta-T4, LG, HG	qMSP	89.1	100	90.9	50 (other)	85.1	96					20 16		
<i>TWIST1, NID2</i>	Primary/Recurrent		Sedimentation	172 (37% hematuria and 63% NMIB C)		Ta-T1, LG, HG	Patients with negative cystoscopy (hematuria)	q-MSP									0.669	[63]	20 17		
<i>CFTR, SALL3, TWIST1</i>	Primary	Training	Sedimentation	111	57	Ta-T2, LG, HG	Mixed urologic diseases	Pyrosequencing					76.6	90.62			84.68	68.42	0.874	[28]	20 18
<i>CFTR, SALL3, TWIST1</i>	Recurrent	Validation	Sedimentation	173	285	Ta-T1	Ta-T1	Pyrosequencing					90.62	88.31			89.6	30.53	0.741		20 18
<i>p14ARF</i>	Primary		Sedimentation	113		≥T1, PUNL MP, grades 1-3	Healthy	MSP					57	27	18	48	24	32			20 17
<i>p16INK4a</i>	Primary		Sedimentation	113		≥T1, PUNL MP, grades 1-3	Healthy	MSP					13	13	9	17	12	12		[19]	20 17
<i>RASSF1A</i>	Primary		Sedimentation	113		≥T1, PUNL MP,	Healthy	MSP					57	44	41	56	35	46			20 17

						grades 1-3													
<i>DAPK1</i>	Primary	Sedimentation	113			≥T1, PUNL MP, grades 1-3	Healthy	MSP		22	17	20	13	24	17				20 17
<i>APC</i>	Primary	Sedimentation	113			≥T1, PUNL MP, grades 1-3	Healthy	MSP		66	43	43	56	35	46				20 17
<i>p14ARF, p16INK4A, RASSF1A, DAPK, APC</i>	Primary	Sedimentation	113			≥T1, PUNL MP, grades 1-3	Healthy	MSP							91	-			20 17
<i>RARβ</i>	Primary	Sedimentation	22	17		NMIBC -MIBC, grades 1-3	Healthy	MSP				69.2 (LG+ HG)		66.7	68.2	76.4			20 02
<i>DAPK</i>	Primary	Sedimentation	22	17		NMIBC -MIBC, grades 1-3	Healthy	MSP				38.4 (LG+ HG)		55.5	45.5	100			20 02
<i>E-cad</i>	Primary	Sedimentation	22	17		NMIBC -MIBC, grades 1-3	Healthy	MSP				53.8 (LG+ HG)		66.7	59.1	100	[21]		20 02
<i>p16</i>	Primary	Sedimentation	22	17		NMIBC -MIBC, grades 1-3	Healthy	MSP				7.6		22.2	13.6	100			20 02
<i>RARβ, DAPK, E-cad, p16</i>	Primary	Sedimentation	22	17		NMIBC -MIBC, grades 1-3	Healthy	MSP				84.6 (LG+ HG)		100	90.9	76.4			20 02
<i>APC, RASSF1A, p14ARF</i>	Primary		45	38		Ta-T4, grades 1-3	Mixed urologic diseases and healthy	MSP							87	100		[42]	20 04
<i>BCL2</i>	Primary	Sedimentation	37	20		Ta-T4	Healthy	qMSP						64.9	NA				20 04
<i>TERT</i>	Primary	Sedimentation	37	20		Ta-T4	Healthy	qMSP						51.4	NA			[43]	20 04
<i>DAPK</i>	Primary	Sedimentation	37	20		Ta-T4	Healthy	qMSP						21.6	NA				20 04
<i>BCL2, TERT, DAPK</i>	Primary	Sedimentation	37	20		Ta-T4	Healthy	qMSP						78.4	78.4				20 04
<i>LAMA3</i>	Primary	Sedimentation	71			MIBC, NMIBC, LG, HG		MSP						39	NA			[64]	20 04
<i>LAMB3</i>	Primary	Sedimentation	71			MIBC, NMIBC		MSP						19	NA				20 04

						, LG, HG													
LAMC2	Primary	Sedimentation	71			MIBC, NMIBC , LG, HG	MSP							15	NA				2004
LAMA3, LAMB3, LAMC2	Primary	Sedimentation	71			MIBC, NMIBC , LG, HG	MSP							49	NA				2004
sFRP-1	Primary	Sedimentation	24	20		MIBC, NMIBC , grades 1-3	Healthy MSP		90	35.7	63.6	75	20	58.3	95				2006
sFRP-2	Primary	Sedimentation	24	20		MIBC, NMIBC , grades 1-3	Healthy MSP		90	57.1	81.8	62.5	60	70.8	90				2006
sFRP-4	Primary	Sedimentation	24	20		MIBC, NMIBC , grades 1-3	Healthy MSP		70	42.9	54.5	62.5	40	54.2	90				2006
sFRP-5	Primary	Sedimentation	24	20		MIBC, NMIBC , grades 1-3	Healthy MSP		90	64.3	81.8	75	60	75.0	95			[65]	2006
Wif-1	Primary	Sedimentation	24	20		MIBC, NMIBC , grades 1-3	Healthy MSP		70	35.7	45.5	62.5	40	58.3	95				2006
Dkk-3	Primary	Sedimentation	24	20		MIBC, NMIBC , grades 1-3	Healthy MSP		90	35.7	63.6	75	20	50.0	95				2006
sFRP-1, sFRP-2, sFRP-4, sFRP-5, Wif-1, Dkk-3	Primary	Sedimentation	24	20		MIBC, NMIBC , grades 1-3	Healthy MSP		83.3	45.2	65.2	68.8	33.3	61.1	93.3	0.763			2006
CDKN2A	Primary	Sedimentation	175	69		Ta-T4, grades 1-3	Mixed urologic diseases, hematuria qMSP							45	NA				2006
ARF	Primary	Sedimentation	175	69		Ta-T4, grades 1-3	Mixed urologic diseases, hematuria qMSP							28	NA				2006
MGMT	Primary	Sedimentation	175	69		Ta-T4, grades 1-3	Mixed urologic diseases, hematuria qMSP							35	NA			[66]	2006
GSTP1	Primary	Sedimentation	175	69		Ta-T4, grades 1-3	Mixed urologic diseases, hematuria qMSP							43	NA				2006
CDKN2A, ARF, MGMT, GSTP1	Primary	Sedimentation	175	69		Ta-T4, grades 1-3	Mixed urologic qMSP		85	75				69	100				2006

						diseases, hematuria													
<i>RASSF1A, E-cad, APC</i>	Primary	Sedimentation	35	(>70 y)=35/ (<40 Y)=34	Ta-T4	Hematuria or lower urinary tract symptoms	qMSP					69	60						20 06
<i>RASSF1A</i>	Primary	Sedimentation	35	(>70 y)=35/ (<40 Y)=34	Ta-T4	Hematuria or lower urinary tract symptoms	qMSP					51	57/74						20 06
<i>E-cad</i>	Primary	Sedimentation	35	(>70 y)=35/ (<40 Y)=34	Ta-T4	Hematuria or lower urinary tract symptoms	qMSP					31	49/62						20 06
<i>RAR-B</i>	Primary	Sedimentation	35	(>70 y)=35/ (<40 Y)=34	Ta-T4	Hematuria or lower urinary tract symptoms	qMSP					3	100/100						20 06
<i>pl4</i>	Primary	Sedimentation	35	(>70 y)=35/ (<40 Y)=34	Ta-T4	Hematuria or lower urinary tract symptoms	qMSP					0	100/100					[67]	20 06
<i>pl6</i>	Primary	Sedimentation	35	(>70 y)=35/ (<40 Y)=34	Ta-T4	Hematuria or lower urinary tract symptoms	qMSP					0	100/100						20 06
<i>DAPK</i>	Primary	Sedimentation	35	(>70 y)=35/ (<40 Y)=34	Ta-T4	Hematuria or lower urinary tract symptoms	qMSP					6	97/94						20 06
<i>GSTP1</i>	Primary	Sedimentation	35	(>70 y)=35/ (<40 Y)=34	Ta-T4	Hematuria or lower urinary tract symptoms	qMSP					3	100/100						20 06
<i>APC</i>	Primary	Sedimentation	35	(>70 y)=35/ (<40 Y)=34	Ta-T4	Hematuria or lower urinary tract symptoms	qMSP					40	80/88						20 06
<i>HOXA9, PCDH17, POU4F2, ONECUT2</i>	Primary	Sedimentation	Total=111		Ta-T4, LG, HG PUNL MP	Mixed urologic diseases, hematuria	qMSP	85.5	96.3 (CIS+ T1-T4)	91.5	88.4	33.3	90.5	73.2	0.871				20 18
<i>HOXA9</i>	Primary	Sedimentation	Total=111		Ta-T4, LG, HG PUNL MP	Mixed urologic diseases, hematuria	qMSP					50.9	93.1					[22]	20 18
<i>PCDH17</i>	Primary	Sedimentation	Total=111		Ta-T4, LG, HG	Mixed urologic	qMSP					47.2	79.3						20 18

					PUNL MP	diseases, hematuria											
<i>POU4F2</i>	Primary	Sedimentation	Total=111		Ta-T4, LG, HG PUNL MP	Mixed urologic diseases, hematuria	qMSP					77.4	79.3				2018
<i>ONECUT2</i>	Primary	Sedimentation	Total=111		Ta-T4, LG, HG PUNL MP	Mixed urologic diseases, hematuria	qMSP					56.6	91.4				2018
<i>CDH1</i>	Primary	Sedimentation	48	35	Ta-T3, LG, HG	Healthy	MSP		61.5	68.8	66.7	67.4	93.9				2018
<i>p14ARF</i>	Primary	Sedimentation	48	35	Ta-T3, LG, HG	Healthy	MSP		76.9	68.8	75	72.1	63.6			[68]	2018
<i>CDH1, p14ARF</i>	Primary	Sedimentation	48	35	Ta-T3, LG, HG	Healthy	MSP				83.3	86.0	97.0				2018
<i>ABCC6</i>	Primary	Sedimentation	109	256	Ta-T4, LG, HG	Mixed urologic diseases, negative findings	MSP					52	53	0.527			2018
<i>BRCA1</i>	Primary	Sedimentation	109	256	Ta-T4, LG, HG	Mixed urologic diseases, negative findings	MSP					33	58	0.453			2018
<i>GDF15</i>	Primary	Sedimentation	109	256	Ta-T4, LG, HG	Mixed urologic diseases, negative findings	MSP					81	10	0.452			2018
<i>HSPA2</i>	Primary	Sedimentation	109	256	Ta-T4, LG, HG	Mixed urologic diseases, negative findings	MSP					73	36	0.548			2018
<i>RASSF1A</i>	Primary	Sedimentation	109	256	Ta-T4, LG, HG	Mixed urologic diseases, negative findings	MSP					51	81	0.624		[69]	2018
<i>SALL3</i>	Primary	Sedimentation	109	256	Ta-T4, LG, HG	Mixed urologic diseases, negative findings	MSP					28	86	0.540			2018
<i>THBS1</i>	Primary	Sedimentation	109	256	Ta-T4, LG, HG	Mixed urologic diseases, negative findings	MSP					84	25	0.546			2018
<i>TMEFF2</i>	Primary	Sedimentation	109	256	Ta-T4, LG, HG	Mixed urologic diseases, negative findings	MSP					68	40	0.539			2018

<i>CDH1</i>	Primary	Sedimentation	109	256	Ta-T4, LG, HG	Mixed urologic diseases, negative findings	MSP					13	98	0.555	2018
<i>VIM</i>	Primary	Sedimentation	109	256	Ta-T4, LG, HG	Mixed urologic diseases, negative findings	MSP					70	61	0.654	2018
<i>VIM, RASSF1A</i>	Primary	Sedimentation	109	256	Ta-T4, LG, HG	Mixed urologic diseases, negative findings	MSP					73	63	0.718	2018
<i>VIM, RASSF1A, GDF15</i>	Primary	Sedimentation	109	256	Ta-T4, LG, HG	Mixed urologic diseases, negative findings	MSP					45	91	0.746	2018
<i>VIM, RASSF1A, GDF15, TMEFF2</i>	Primary	Sedimentation	109	256	Ta-T4, LG, HG	Mixed urologic diseases, negative findings	MSP					82	53	0.760	2018
<i>RBBP8</i>	Primary	Sedimentation	22	10	Ta-T4, LG, HG	Healthy donors	MSP					50	100		2018
<i>RBBP8</i>	Primary	Sedimentation	52	51	Ta-T4, LG, HG	Mixed urologic diseases, disease free	Pyrosequencing					51.9	90.9	0.730	[70] 2018
<i>ONECUT2</i>	Primary	Filtration 8µm	99	376	Ta-T4, LG, HG, PUNLMP	Macroscopic hematuria, no malignancy	qMSP	58.7	100	93.9	92.3	77.8	93.9		2016
<i>VIM</i>	Primary	Filtration 8µm	99	376	Ta-T4, LG, HG, PUNLMP	Macroscopic hematuria, no malignancy	qMSP	69.6	71.4	81.8	84.6	75.8	95.7		2016
<i>SALL3</i>	Primary	Filtration 8µm	99	376	Ta-T4, LG, HG, PUNLMP	Macroscopic hematuria, no malignancy	qMSP	47.8	85.7	84.8	84.6	67.7	96.5		[23] 2016
<i>CCNA1</i>	Primary	Filtration 8µm	99	376	Ta-T4, LG, HG, PUNLMP	Macroscopic hematuria, no malignancy	qMSP	54.3	71.4	78.8	76.9	66.7	96.5		2016

<i>BCL2</i>	Primary		Filtration 8µm	99	376	Ta-T4, LG, HG, PUNL MP	Macroscopic hematuria , no malignancy	qMSP	54. 3	71.4	69. 7	69.2		62.6	97.9	20 16	
<i>EOMES</i>	Primary		Filtration 8µm	99	376	Ta-T4, LG, HG, PUNL MP	Macroscopic hematuria , no malignancy	qMSP	39. 1	42.9	60. 6	30.8		45.5	96.8	20 16	
<i>ONECUT2, VIM, SALL3, CCNA1, BCL2, EOMES</i>	Primary		Filtration 8µm	99	376	Ta-T4, LG, HG, PUNL MP	Macroscopic hematuria , no malignancy	qMSP						89.9	88.6	20 16	
<i>IRF8</i>	Primary		Sedimentation	26	19	Ta-T4, LG, HG	Noncancer, not specified	qMSP					50	68.8	61.5	94.7	20 15
<i>SFRP1</i>	Primary		Sedimentation	26	19	Ta-T4, LG, HG	Noncancer, not specified	qMSP					60	43.8	50	94.7	20 15
<i>ZNF671</i>	Primary		Sedimentation	26	19	Ta-T4, LG, HG	Noncancer, not specified	qMSP					40	68.8	57.7	89.5	20 15
<i>IRF8, SFRP1</i>	Primary		Sedimentation	26	19	Ta-T4, LG, HG	Noncancer, not specified	qMSP					90	87.5	88.4	89.5	20 15
<i>ZNF671, IRF8</i>	Primary		Sedimentation	26	19	Ta-T4, LG, HG	Noncancer, not specified	qMSP					60	94.1	80.8	84.2	[12] 20 15
<i>ZNF671, SFRP1</i>	Primary		Sedimentation	26	19	Ta-T4, LG, HG	Noncancer, not specified	qMSP					80	87.5	84.6	89.5	20 15
<i>ZNF671, SFRP1, IRF8</i>	Primary		Sedimentation	26	19	Ta-T4, LG, HG	Noncancer, not specified	qMSP					90	100	96.2	84.2	20 15
<i>ZNF671</i>	Primary	Training	Sedimentation	69	28	Ta-T4, LG, HG	Noncancer, not specified	qMSP					45	40	42	92.8	20 15
<i>ZNF671</i>	Primary	Validation	Sedimentation	33	28	Ta-T4, LG, HG	Noncancer, not specified	qMSP					33	52	48	89	20 15
<i>BCL2</i>	Primary							qMSP						NA	NA	20 15	
<i>EOMES</i>	Primary		Filtration (8µm)	33	26	Ta-T2, LG, HG, PUNL MP	Mixed urologic diseases, negative findings	qMSP						29	NA	[14] 20 15	
<i>VIM</i>	Primary		Filtration (8µm)	33	26	Ta-T2, LG, HG, PUNL MP	Mixed urologic diseases, negative findings	qMSP						81	NA	20 15	

<i>SALL3</i>	Primary	Filtration (8µm)	33	26	Ta-T2, LG, HG, PUNL MP	Mixed urologic diseases, negative findings	qMSP						NA	NA			20 15
<i>CCNA1</i>	Primary	Filtration (8µm)	33	26	Ta-T2, LG, HG, PUNL MP	Mixed urologic diseases, negative findings	qMSP						NA	NA			20 15
<i>HOXA9</i>	Primary	Filtration (8µm)	33	26	Ta-T2, LG, HG, PUNL MP	Mixed urologic diseases, negative findings	qMSP						74	NA			20 15
<i>BCL2, EOMES, VIM, SALL3, CCNA1, HOXA9, POU4F2</i>	Primary	Filtration (8µm)	33	26	Ta-T2, LG, HG, PUNL MP	Mixed urologic diseases, negative findings	qMSP						94	NA			20 15
<i>TWIST1, NID2</i>	Primary	NA	222 (25% BC)		Ta-T1, LG, HG	Negative findings	qMSP						75	86	0.656	[71]	20 15
<i>CCND2</i>	Primary	Sedimentation	148	56	Stage 1-3, LG, HG	Normal controls, not specified	qMSP			38.1, Invasive (stage 2, 3)	9.3 Noninvasive (stage 1)	34.6	12.5	25.6	100		20 14
<i>CCNA1</i>	Primary	Sedimentation	73	60	Stage 1-3, LG, HG	Normal controls, not specified	qMSP			69.4 Invasive (stage 2, 3)	56.3 Noninvasive (stage 1)	67.3	50	68.4	83.4	[72]	20 14
<i>CALCA</i>	Primary	Sedimentation	148	56	Stage 1-3, LG, HG	Normal controls, not specified	qMSP			72.8 Invasive (stage 2, 3)	53.1 Noninvasive (stage 1)	75.2	33.3	63.5	71.5		20 14
<i>VGF</i>	Primary	Sedimentation	20	20			qMSP							40	95	[73]	20 14
<i>CCNA1, EOMES, HOXA9, POU4F2, SALL3, VIM2, BCL2</i>	Primary	Sedimentation	189		≥Ta		qMSP	75 (LG Ta)	92	90	89			80		[46]	20 14
<i>CCNA1, EOMES, HOXA9, POU4F2, SALL3, VIM2, BCL2</i>	Primary	Filtered cells (8µm)	187				qMSP	84 (LG Ta)	96	93	95			87		[46]	20 14

<i>TWIST1, NID2</i>	Primary		Sedimentation	24	87													38	86	0.71	[74]	20 14	
<i>OTX</i>	Primary		Sedimentation	54	115	≥Ta, grade 1-3	Hematuria with nonmalignant causes	qMSP (SNUPE)													0.69		20 13
<i>ONECUT</i>	Primary		Sedimentation	54	115	≥Ta, grade 1-3	Hematuria with nonmalignant causes	qMSP (SNUPE)													0.78		20 13
<i>OSR</i>	Primary		Sedimentation	54	115	≥Ta, grade 1-3	Hematuria with nonmalignant causes	qMSP (SNUPE)													0.75	[75]	20 13
<i>SIM</i>	Primary		Sedimentation	54	115	≥Ta, grade 1-3	Hematuria with nonmalignant causes	qMSP (SNUPE)													0.60		20 13
<i>MEIS</i>	Primary		Sedimentation	54	115	≥Ta, grade 1-3	Hematuria with nonmalignant causes	qMSP (SNUPE)													0.71		20 13
<i>OTX1</i>	Primary	Training	Sedimentation	101	70	Recurrent Ta-T2, grade 1-3	Healthy	BS-SNaPshot	60	77	86		81	48	65	Fixed=90%	0.805						20 13
<i>MEIS1</i>	Primary	Training	Sedimentation	101	70	Recurrent Ta-T2, grade 1-3	Healthy		44	62	50		48	59	30	46	Fixed=90%	0.749					20 13
<i>ONECUT2</i>	Primary	Training	Sedimentation	101	70	Recurrent Ta-T2, grade 1-3	Healthy		49	77	50		46	70	43	52	Fixed=90%	0.737					20 13
<i>SIM2</i>	Primary	Training	Sedimentation	101	70	Recurrent Ta-T2, grade 1-3	Healthy		40	85	71		46	78	22	49	Fixed=90%	0.753				[30]	20 13
<i>FOXA1</i>	Primary	Training	Sedimentation	101	70	Recurrent Ta-T2, grade 1-3	Healthy		33	62	43		43	59	4	38	Fixed=90%	0.659					20 13
<i>ZNF503</i>	Primary	Training	Sedimentation	101	70	Recurrent Ta-T2, grade 1-3	Healthy		47	77	64		50	70	35	52	Fixed=90%	0.784					20 13

<i>HOXA9</i>	Primary	Training	Sedimentation	101	70	Recurrent Ta-T2, grade 1-3	Healthy		60	77	64	61	78	52	62	Fixed=90%	0.829	20 13
<i>OSR1</i>	Primary	Training	Sedimentation	101	70	Recurrent Ta-T2, grade 1-3	Healthy		37	69	57	37	74	17	44	Fixed=90%	0.705	20 13
<i>OTX1, ONECUT2, OSR1</i>	Primary	Training	Sedimentation	101	70	Recurrent Ta-T2, grade 1-3	Healthy		64	77	86	65	81	57	68	Fixed=90%	0.801	20 13
<i>OTX1, ONECUT2, OSR1</i>	Recurrent	Validation	Sedimentation	95	40	Pre-tumor, NMIBC, grade 1-3, (recurrence)	No recurrence								74	Fixed=90%	0.864	20 13
<i>SOX1</i>	Primary		Sedimentation	73	18	T1-T4, grade 1-3	Healthy	Pyrosequencing							41.54	100	0.74	20 13
<i>TJP2</i>	Primary		Sedimentation	73	18	T1-T4, grade 1-3	Healthy	Pyrosequencing							92.54	56.25	0.79	20 13
<i>MYOD</i>	Primary		Sedimentation	73	18	T1-T4, grade 1-3	Healthy	Pyrosequencing							86.79	87.50	0.93	20 13
<i>HOXA9_1</i>	Primary		Sedimentation	73	18	T1-T4, grade 1-3	Healthy	Pyrosequencing							86.23	88.89	0.92	20 13
<i>HOXA9_2</i>	Primary		Sedimentation	73	18	T1-T4, grade 1-3	Healthy	Pyrosequencing							88.57	61.54	0.81	20 13
<i>VAMP8</i> (hypomethylated)	Primary		Sedimentation	73	18	T1-T4, grade 1-3	Healthy	Pyrosequencing							97.06	40.0	0.72	[10] 20 13
<i>CASP8</i> (hypomethylated)	Primary		Sedimentation	73	18	T1-T4, grade 1-3	Healthy	Pyrosequencing							73.61	76.92	0.82	20 13
<i>SPP1</i> (hypomethylated)	Primary		Sedimentation	73	18	T1-T4, grade 1-3	Healthy	Pyrosequencing							85.94	75.0	0.79	20 13
<i>SOX1, TJP2, MYOD, HOXA9_1, HOXA9_2, VAMP8, CASP8, SPP1, IFNG, CAPG, HLADPA1, RIPK3</i> (positive when six or more are present)	Primary		Sedimentation	73	18	Ta-T4, grade 1-3	Healthy	Pyrosequencing							100	100		20 13
<i>TWIST1</i>	Primary		Sedimentation	24	15	Ta-T3, LG, HG	Mixed urologic diseases,	MSP							87.5	93.3		[13] 20 13

<i>NID2</i>	Primary		Sedimentation	24	15	Ta-T3, LG, HG	Mixed urologic diseases, and healthy	MSP						95.8	100			20 13
<i>TWIST1, NID2</i>	Primary		Sedimentation	24	15	Ta-T3, LG, HG	Mixed urologic diseases, and healthy	MSP						95.8	93.3			20 13
<i>PRDM2</i>	Primary	Training	Sedimentation	70	50	≥Ta, LG, HG	Mixed urologic diseases, and healthy	MS-MLPA		10.5	21.6	23.5	13.9	18.6	72	0.522		20 13
<i>RUNX3</i>	Primary	Training	Sedimentation	70	50	≥Ta, LG, HG	Mixed urologic diseases, and healthy	MS-MLPA		31.6	29.4	32.3	27.8	30	86	0.613		20 13
<i>RARB</i>	Primary	Training	Sedimentation	70	50	≥Ta, LG, HG	Mixed urologic diseases, and healthy	MS-MLPA		10.5	29.4	35.3	13.9	24.3	70	0.496		20 13
<i>HLTF-1</i>	Primary	Training	Sedimentation	70	50	≥Ta, LG, HG	Mixed urologic diseases, and healthy	MS-MLPA		0.0	15.7	20.6	2.8	11.4	80	0.453		20 13
<i>HLTF-2</i>	Primary	Training	Sedimentation	70	50	≥Ta, LG, HG	Mixed urologic diseases, and healthy	MS-MLPA		0.0	9.8	8.8	5.5	7.1	82	0.44	[76]	20 13
<i>SCGB3A1-1</i>	Primary	Training	Sedimentation	70	50	≥Ta, LG, HG	Mixed urologic diseases, and healthy	MS-MLPA		21.0	35.3	41.2	22.2	31.4	68	0.526		20 13
<i>SCGB3A1-2</i>	Primary	Training	Sedimentation	70	50	≥Ta, LG, HG	Mixed urologic diseases, and healthy	MS-MLPA		0.0	15.7	17.6	5.5	11.4	76	0.429		20 13
<i>ID4-1</i>	Primary	Training	Sedimentation	70	50	≥Ta, LG, HG	Mixed urologic diseases, and healthy	MS-MLPA		10.5	37.2	38.2	22.2	30	82	0.609		20 13
<i>ID4-2</i>	Primary	Training	Sedimentation	70	50	≥Ta, LG, HG	Mixed urologic diseases, and healthy	MS-MLPA		0.0	13.7	14.7	5.5	10	80	0.51		20 13

<i>TWIST1</i>	Primary	Training	Sedimentation	70	50	≥Ta, LG, HG	Mixed urologic diseases, and healthy	MS-MLPA	21.0	19.6	14.7	25.0	20	74	0.56	2013
<i>SFRP4-1</i>	Primary	Training	Sedimentation	70	50	≥Ta, LG, HG	Mixed urologic diseases, and healthy	MS-MLPA	15.8	21.6	23.5	16.7	20	74	0.489	2013
<i>SFRP4-2</i>	Primary	Training	Sedimentation	70	50	≥Ta, LG, HG	Mixed urologic diseases, and healthy	MS-MLPA	10.5	19.6	20.6	13.9	17.1	78	0.48	2013
<i>DLC1-1</i>	Primary	Training	Sedimentation	70	50	≥Ta, LG, HG	Mixed urologic diseases, and healthy	MS-MLPA	10.5	17.6	17.6	13.9	15.7	74	0.511	2013
<i>DLC1-2</i>	Primary	Training	Sedimentation	70	50	≥Ta, LG, HG	Mixed urologic diseases, and healthy	MS-MLPA	5.3	21.6	23.5	11.1	17.1	80	0.538	2013
<i>SFRP5-1</i>	Primary	Training	Sedimentation	70	50	≥Ta, LG, HG	Mixed urologic diseases, and healthy	MS-MLPA	10.5	17.6	20.6	11.1	15.7	80	0.499	2013
<i>SFRP5-2</i>	Primary	Training	Sedimentation	70	50	≥Ta, LG, HG	Mixed urologic diseases, and healthy	MS-MLPA	5.3	13.7	14.7	8.3	11.4	88	0.546	2013
<i>BNIP3</i>	Primary	Training	Sedimentation	70	50	≥Ta, LG, HG	Mixed urologic diseases, and healthy	MS-MLPA	15.8	33.3	35.3	22.2	28.6	70	0.506	2013
<i>H2AFX-1</i>	Primary	Training	Sedimentation	70	50	≥Ta, LG, HG	Mixed urologic diseases, and healthy	MS-MLPA	5.3	19.6	26.5	5.5	15.7	84	0.551	2013
<i>H2AFX-2</i>	Primary	Training	Sedimentation	70	50	≥Ta, LG, HG	Mixed urologic diseases, and healthy	MS-MLPA	0.0	11.8	14.7	2.8	8.6	90	0.548	2013
<i>CCND2-1</i>	Primary	Training	Sedimentation	70	50	≥Ta, LG, HG	Mixed urologic diseases, and healthy	MS-MLPA	21.0	25.5	20.6	25.0	24.3	82	0.589	2013
<i>CCND2-2</i>	Primary	Training	Sedimentation	70	50	≥Ta, LG, HG	Mixed urologic	MS-MLPA	31.6	43.1	47.1	33.3	40	66	0.568	2013

							diseases, and healthy										
<i>CACNA1G</i>	Primary	Training	Sedimentation	70	50	≥Ta, LG, HG	Mixed urologic diseases, and healthy	MS-MLPA	10.5	13.7	14.7	11.1	12.9	78	0.491	20	13
<i>TGIF</i>	Primary	Training	Sedimentation	70	50	≥Ta, LG, HG	Mixed urologic diseases, and healthy	MS-MLPA	5.3	17.6	20.6	8.3	14.3	76	0.416	20	13
<i>BCL2</i>	Primary	Training	Sedimentation	70	50	≥Ta, LG, HG	Mixed urologic diseases, and healthy	MS-MLPA	0.0	11.8	11.8	5.5	8.6	86	0.503	20	13
<i>CACNA1A</i>	Primary	Training	Sedimentation	70	50	≥Ta, LG, HG	Mixed urologic diseases, and healthy	MS-MLPA	46.1	15.7	14.7	13.9	14.3	82	0.562	20	13
<i>TIMP3-1</i>	Primary	Training	Sedimentation	70	50	≥Ta, LG, HG	Mixed urologic diseases, and healthy	MS-MLPA	5.3	11.8	14.7	5.5	10	84	0.511	20	13
<i>TIMP3-2</i>	Primary	Training	Sedimentation	70	50	≥Ta, LG, HG	Mixed urologic diseases, and healthy	MS-MLPA	10.5	13.7	14.7	11.1	12.9	80	0.481	20	13
<i>PRDM2</i>	Primary	Validation	Sedimentation	100	28	≥Ta, LG, HG	Mixed urologic diseases, and healthy	MS-MLPA	42.3	28.4	23.9	38.9	32	71.4	0.565	20	13
<i>RUNX3</i>	Primary	Validation	Sedimentation	100	28	≥Ta, LG, HG	Mixed urologic diseases, and healthy	MS-MLPA	46.1	33.8	26.1	46.3	37	82.1	0.655	20	13
<i>RARB</i>	Primary	Validation	Sedimentation	100	28	≥Ta, LG, HG	Mixed urologic diseases, and healthy	MS-MLPA	19.2	14.8	17.4	14.8	16	85.7	0.521	20	13
<i>HLTF-1</i>	Primary	Validation	Sedimentation	100	28	≥Ta, LG, HG	Mixed urologic diseases, and healthy	MS-MLPA	3.8	16.2	8.7	16.7	13	89.3	0.465	20	13
<i>HLTF-2</i>	Primary	Validation	Sedimentation	100	28	≥Ta, LG, HG	Mixed urologic diseases,	MS-MLPA	7.7	12.2	4.3	16.7	11	92.9	0.511	20	13

SCGB3A1-1	Primary	Validation	Sedimentation	100	28	≥Ta, LG, HG	Mixed urologic diseases, and healthy	MS-MLPA	42.3	41.9	37	46.3	42	71.4	0.543	20 13
SCGB3A1-2	Primary	Validation	Sedimentation	100	28	≥Ta, LG, HG	Mixed urologic diseases, and healthy	MS-MLPA	19.2	10.8	10.9	14.8	13	92.9	0.533	20 13
ID4-1	Primary	Validation	Sedimentation	100	28	≥Ta, LG, HG	Mixed urologic diseases, and healthy	MS-MLPA	26.9	28.4	26.1	29.6	28	71.4	0.539	20 13
ID4-2	Primary	Validation	Sedimentation	100	28	≥Ta, LG, HG	Mixed urologic diseases, and healthy	MS-MLPA	3.8	21.6	19.6	14.8	17	82.1	0.535	20 13
TWIST1	Primary	Validation	Sedimentation	100	28	≥Ta, LG, HG	Mixed urologic diseases, and healthy	MS-MLPA	30.8	20.3	19.6	25.9	23	82.1	0.538	20 13
SFRP4-1	Primary	Validation	Sedimentation	100	28	≥Ta, LG, HG	Mixed urologic diseases, and healthy	MS-MLPA	3.8	14.9	15.2	9.3	12	89.3	0.532	20 13
SFRP4-2	Primary	Validation	Sedimentation	100	28	≥Ta, LG, HG	Mixed urologic diseases, and healthy	MS-MLPA	7.7	13.5	15.2	9.3	12	92.9	0.562	20 13
DLC1-1	Primary	Validation	Sedimentation	100	28	≥Ta, LG, HG	Mixed urologic diseases, and healthy	MS-MLPA	30.8	18.9	19.6	24.1	22	82.1	0.533	20 13
DLC1-2	Primary	Validation	Sedimentation	100	28	≥Ta, LG, HG	Mixed urologic diseases, and healthy	MS-MLPA	30.8	13.5	17.4	18.5	18	92.9	0.594	20 13
SFRP5-1	Primary	Validation	Sedimentation	100	28	≥Ta, LG, HG	Mixed urologic diseases, and healthy	MS-MLPA	23.1	17.6	13	24.1	19	92.9	0.578	20 13
SFRP5-2	Primary	Validation	Sedimentation	100	28	≥Ta, LG, HG	Mixed urologic diseases, and healthy	MS-MLPA	7.7	10.8	8.7	11.1	10	89.3	0.556	20 13

<i>BNIP3</i>	Primary	Validation	Sedimentation	100	28	≥Ta, LG, HG	Mixed urologic diseases, and healthy	MS-MLPA	34.6	41.9	37	42.6	40	57.1	0.532	20 13
<i>H2AFX-1</i>	Primary	Validation	Sedimentation	100	28	≥Ta, LG, HG	Mixed urologic diseases, and healthy	MS-MLPA	11.5	21.6	19.6	18.5	19	78.6	0.469	20 13
<i>H2AFX-2</i>	Primary	Validation	Sedimentation	100	28	≥Ta, LG, HG	Mixed urologic diseases, and healthy	MS-MLPA	0	10.8	10.9	5.5	8	96.4	0.493	20 13
<i>CCND2-1</i>	Primary	Validation	Sedimentation	100	28	≥Ta, LG, HG	Mixed urologic diseases, and healthy	MS-MLPA	15.4	27	19.6	27.8	24	92.9	0.598	20 13
<i>CCND2-2</i>	Primary	Validation	Sedimentation	100	28	≥Ta, LG, HG	Mixed urologic diseases, and healthy	MS-MLPA	46.1	47.3	43.5	50	47	64.3	0.544	20 13
<i>CACNA1G</i>	Primary	Validation	Sedimentation	100	28	≥Ta, LG, HG	Mixed urologic diseases, and healthy	MS-MLPA	7.7	20.3	13	20.4	17	92.9	0.608	20 13
<i>TGIF</i>	Primary	Validation	Sedimentation	100	28	≥Ta, LG, HG	Mixed urologic diseases, and healthy	MS-MLPA	11.5	5.4	6.5	7.4	7	85.7	0.48	20 13
<i>BCL2</i>	Primary	Validation	Sedimentation	100	28	≥Ta, LG, HG	Mixed urologic diseases, and healthy	MS-MLPA	3.8	12.2	8.7	11.1	10	89.3	0.508	20 13
<i>CACNA1A</i>	Primary	Validation	Sedimentation	100	28	≥Ta, LG, HG	Mixed urologic diseases, and healthy	MS-MLPA	7.7	18.9	17.4	14.8	16	92.9	0.63	20 13
<i>TIMP3-1</i>	Primary	Validation	Sedimentation	100	28	≥Ta, LG, HG	Mixed urologic diseases, and healthy	MS-MLPA	3.8	14.9	13	11.1	12	92.9	0.546	20 13
<i>TIMP3-2</i>	Primary	Validation	Sedimentation	100	28	≥Ta, LG, HG	Mixed urologic diseases, and healthy	MS-MLPA	0	14.9	13	9.3	11	89.3	0.544	20 13

Panel consisting of 41 sequences	Recurrent	Sedimentation	136 G1/G2 NMIBC		≥Ta, LG, HG	Mixed urologic diseases, and healthy	MS-MLPA	68	89	50		74 (grade 2)	82 (grade 3)	57 (grade 1), 20 (grade 0)			[31]	2013
<i>BCL2, CDKN2A, NID2</i>	Primary	Sedimentation	42	22	Ta-T3, LG, HG	Mixed urologic diseases, and healthy	nested MSP	61.1	92.3	100		83	94.4	54.5	80.95	86.36		2012
<i>BCL2</i>	Primary	Sedimentation	42	22	Ta-T3, LG, HG	Mixed urologic diseases, and healthy	nested MSP	38.8	69.2	100		66.7	83.3	27.3	61.90	100		2012
<i>CDKN2A</i>	Primary	Sedimentation	42	22	Ta-T3, LG, HG	Mixed urologic diseases, and healthy	nested MSP	11.1	7.7	0		0	5.6	18	7.14	95.45	[77]	2012
<i>NID2</i>	Primary	Sedimentation	42	22	Ta-T3, LG, HG	Mixed urologic diseases, and healthy	nested MSP	38.8	76.9	88.9		66.7	77.8	27.3	61.90	90.91		2012
<i>EOMES</i>	Primary	Sedimentation	184	35	Ta-T1, grade 1-3	Mixed urologic diseases	qMSP	86	100	92		85	95	65	88	97	0.96	2012
<i>HOXA9</i>	Primary	Sedimentation	184	35	Ta-T1, grade 1-3	Mixed urologic diseases	qMSP	80	50	87		80	83	80	82	100	0.91	2012
<i>POU4F2</i>	Primary	Sedimentation	184	35	Ta-T1, grade 1-3	Mixed urologic diseases	qMSP	83	100	88		82	91	59	85	94	0.94	2012
<i>TWIST1</i>	Primary	Sedimentation	184	35	Ta-T1, grade 1-3	Mixed urologic diseases	qMSP	85	100	96		90	89	71	88	100	0.94	2012
<i>VIM</i>	Primary	Sedimentation	184	35	Ta-T1, grade 1-3	Mixed urologic diseases	qMSP	89	100	88		86	94	75	89	100	0.97	2012
<i>ZNF154</i>	Primary	Sedimentation	184	35	Ta-T1, grade 1-3	Mixed urologic diseases	qMSP	84	100	94		77	98	71	87	100	0.95	[25] 2012
<i>EOMES</i>	Recurrent	Sedimentation	139	67	Ta-T1, grade 1-3	Mixed urologic diseases	qMSP	91	100	96	100	96	92	88	94	55	0.85	2012
<i>HOXA9</i>	Recurrent	Sedimentation	139	67	Ta-T1, grade 1-3	Mixed urologic diseases	qMSP	93	100	92	90	93	92	91	93	55	0.78	2012
<i>POU4F2</i>	Recurrent	Sedimentation	139	67	Ta-T1, grade 1-3	Mixed urologic diseases	qMSP	85	67	93	90	89	85	81	88	64	0.80	2012
<i>TWIST1</i>	Recurrent	Sedimentation	139	67	Ta-T1, grade 1-3	Mixed urologic diseases	qMSP	87	75	93	100	88	91	82	90	43	0.76	2012

<i>VIM</i>	Recurrent		Sedimentation	139	67	Ta-T1, grade 1-3	Mixed urologic diseases	qMSP	89	75	93	92	92	88	89	90	59	0.78	20 12
<i>ZNF154</i>	Recurrent		Sedimentation	139	67	Ta-T1, grade 1-3	Mixed urologic diseases	qMSP	95	100	93	83	94	92	100	94	67	0.83	20 12
<i>TWIST1</i>	Primary	Training	Sedimentation	48	275	Not specified	Hematuria	qMSP								84			20 12
<i>NID2</i>	Primary	Training	Sedimentation	48	275	Not specified	Hematuria	qMSP								33			[78] 20 12
<i>VAX1</i>	Primary and Recurrent	Validation	Sedimentation	212	149/41	Stage 1-4, grade 1-3	Normal/Urological Lesions	MSP								42.45	95.31/87.81	73.3/59.5	20 12
<i>KCNV1</i>	Primary and Recurrent	Validation	Sedimentation	212	149/41	Stage 1-4, grade 1-3	Normal/Urological Lesions	MSP								36.92	93.96/95.12	71.3/60.5	20 12
<i>ECEL1</i>	Primary and Recurrent	Validation	Sedimentation	212	149/41	Stage 1-4, grade 1-3	Normal/Urological Lesions	MSP								26.89	97.31/97.56	70.8/59.3	20 12
<i>TMEM26</i>	Primary and Recurrent	Validation	Sedimentation	212	149/41	Stage 1-4, grade 1-3	Normal/Urological Lesions	MSP								26.42	96.64/97.56	69.4/60.3	20 12
<i>PROX1</i>	Primary and Recurrent	Validation	Sedimentation	212	149/41	Stage 1-4, grade 1-3	Normal/Urological Lesions	MSP								24.53	98.66/100.0	71.1/59.1	20 12
<i>TAL1</i>	Primary and Recurrent	Validation	Sedimentation	212	149/41	Stage 1-4, grade 1-3	Normal/Urological Lesions	MSP								24.83	98.66/100.0	72.5/60.4	[79] 20 12
<i>SLC6A20</i>	Primary and Recurrent	Validation	Sedimentation	212	149/41	Stage 1-4, grade 1-3	Normal/Urological Lesions	MSP								15.57	97.89/100.0	69.7/59.3	20 12
<i>LMX1</i>	Primary and Recurrent	Validation	Sedimentation	212	149/41	Stage 1-4, grade 1-3	Normal/Urological Lesions	MSP								9.43	98.66/100.0	67.1/58.8	20 12
<i>CFTR</i>	Primary	Validation	Sedimentation	212	149/41	Stage 1-4, grade 1-3	Normal/Urological Lesions	MSP								52.35	96.64/97.56	77.4/63.8	20 12
<i>VAX1, KCNV1, TAL1, PPOX1</i>	Primary	Validation	Sedimentation	212	149/41	Stage 1-4, grade 1-3	Normal/Urological Lesions	MSP								76.89	88.59/85.36	82.8/84.3	20 12
<i>CFTR, VAX1, KCNV1, TAL1, PPOX1</i>	Primary	Validation	Sedimentation	212	149/41	Stage 1-4, grade 1-3	Normal/Urological Lesions	MSP								88.68	87.25/90.0	89.9/90.0	20 12

<i>RAR-β2</i>	Primary	Sedimentation	100	51	Stage 1-4, LG, HG	Not Specified	Methylated on specific nested PCR			77.8 (stage III,I V)	62.2 (stage I,II)	59.2	83.3	65	69.7	[80]	2012	
<i>TWIST1</i>	Recurrent		48	275	Ta-T3, grade 1-3	No recurrence	MSP							75	69	[26]	2012	
<i>NID2</i>	Recurrent		48	275	Ta-T3, grade 1-3	No recurrence	MSP							46	90		2012	
<i>PCDH17, TCF21</i>	Primary	Sedimentation	50	48	Ta-T4, HG, LG	Healthy	qMSP							60	100		2011	
<i>PCDH17</i>	Primary	Sedimentation	50	48	Ta-T4, HG, LG	Healthy	qMSP							50	100	[39]	2011	
<i>TCF21</i>	Primary	Sedimentation	50	48	Ta-T4, HG, LG	Healthy	qMSP							52	100		2011	
<i>ZNF154</i>	Primary	Sedimentation	110	57	Ta-T4, grade 1-4	Not specified	MS-HRM	84	100	100		95 (grade 2)	97 (grade 3-4)	67 (grade 1)	62	100	0.84	2011
<i>POU4F2</i>	Primary	Sedimentation	113	54	Ta-T4, grade 1-4	Not specified	MS-HRM	92	100	100		95 (grade 2)	97 (grade 3-4)	100 (grade 1)	66	100	0.88	2011
<i>HOXA9</i>	Primary	Sedimentation	107	48	Ta-T4, grade 1-4	Not specified	MS-HRM	83	100	87		88 (grade 2)	90 (grade 3-4)	100 (grade 1)	74	96	0.84	2011
<i>EOMES</i>	Primary	Sedimentation	101	40	Ta-T4, grade 1-4	Not specified	MS-HRM	68	93	87		79 (grade 2)	86 (grade 3-4)	50 (grade 1)	68	100	0.89	2011
<i>CA3</i>	Primary	Sedimentation			Ta-T4, grade 1-4	Not specified	MS-HRM	92	100	100		100 (grade 2)	100 (grade 3-4)	67 (grade 1)			[81]	2011
<i>PCDHGA12</i>	Primary	Sedimentation			Ta-T4, grade 1-4	Not specified	MS-HRM	92	93	100		95 (grade 2)	97 (grade 3-4)	83 (grade 1)				2011
<i>ACOT11</i>	Primary	Sedimentation			Ta-T4, grade 1-4	Not specified	MS-HRM	79	100	100		78 (grade 2)	97 (grade 3-4)	100 (grade 1)				2011
<i>PTGDR</i>	Primary	Sedimentation			Ta-T4, grade 1-4	Not specified	MS-HRM	44	80	67		58 (grade 2)	69 (grade 3-4)	33 (grade 1)				2011
<i>ZNF154, POU4F2, HOXA9, EOMES</i>	Primary	Sedimentation	112	52	Ta-T4, grade 1-4	Not specified	MS-HRM							84	96	0.90	2011	
<i>RARβ2</i>	Primary	Sedimentation	210	110	Stage 1-4, grade 1-3	Healthy/benign BC	MSP	70 (stage 1)	52.2 (stage 2)	53.3 (stage 3)	69.4 (stage 4)	58.2	52.6	83.7	62.8	87.9	[82]	2011
<i>APC</i>	Primary	Sedimentation	210	110	Stage 1-4, grade 1-3	Healthy/benign BC	MSP	58.4 (stage 1)	64.2 (stage 2)	73.3 (stage 3)	41.7 (stage 4)	59.1	63.2	55.8	59.5	98		2011

<i>RARb2, APC</i>	Primary	Sedimentation	210	110	Stage 1-4, grade 1-3	Healthy/benign BC	MSP			87.3	97.6		2011
<i>DAPK</i>	Primary/Recurrent	Sedimentation	30	19	≥Ta, grade 1-3	Noncancer controls, not further specified	qMSP	25.0 (grade 1)	27.7 (grade 2-3)	26.7	89.5		2011
<i>IRF8</i>	Primary/Recurrent	Sedimentation	30	19	≥Ta, grade 1-3	Noncancer controls, not further specified	qMSP	50.0 (grade 1)	61.1 (grade 2-3)	56.7	94.7		2011
<i>p14</i>	Primary/Recurrent	Sedimentation	30	19	≥Ta, grade 1-3	Noncancer controls, not further specified	qMSP	41.7 (grade 1)	16.7 (grade 2-3)	27.6	100		2011
<i>RASSF1A</i>	Primary/Recurrent	Sedimentation	30	19	≥Ta, grade 1-3	Noncancer controls, not further specified	qMSP	16.7 (grade 1)	38.9 (grade 2-3)	30.0	89		2011
<i>SFRP1</i>	Primary/Recurrent	Sedimentation	30	19	≥Ta, grade 1-3	Noncancer controls, not further specified	qMSP	50.0 (grade 1)	33.4 (grade 2-3)	41.4	100		2011
<i>IRF8, p14, SFRP1</i>	Primary/Recurrent	Sedimentation	30	19	≥Ta, grade 1-3	Noncancer controls, not further specified	qMSP	91.7 (grade 1)	83.3 (grade 2-3)	86.7	94.7		2011
<i>MYO3A</i>	Primary	Sedimentation	128	110	Ta-T4, grade 1-4	Benign urological disorders, healthy	qMSP			77.3	90.9	0.841	2011
<i>CA10</i>	Primary	Sedimentation	128	110	Ta-T4, grade 1-4	Benign urological disorders, healthy	qMSP			85.2	81.8	0.835	2011
<i>NKX6-2</i>	Primary	Sedimentation	128	110	Ta-T4, grade 1-4	Benign urological disorders, healthy	qMSP			88.3	76.4	0.823	2011
<i>PENK</i>	Primary	Sedimentation	128	110	Ta-T4, grade 1-4	Benign urological disorders, healthy	qMSP			81.3	79.1	0.802	2011
<i>SOX11</i>	Primary	Sedimentation	128	110	Ta-T4, grade 1-4	Benign urological disorders, healthy	qMSP			70.3	89.1	0.797	2011
<i>DBC1</i>	Primary	Sedimentation	128	110	Ta-T4, grade 1-4	Benign urological	qMSP			71.1	83.6	0.774	2011

[83]

[84]

						disorders, healthy						
<i>NPTX2</i>	Primary	Sedimentation	128	110	Ta-T4, grade 1-4	Benign urological disorders, healthy	qMSP	75.8	73.6	0.747		20 11
<i>A2BP1</i>	Primary	Sedimentation	128	110	Ta-T4, grade 1-4	Benign urological disorders, healthy	qMSP	87.5	54.5	0.710		20 11
<i>MYO3A, CA10, NKX6-2, DBC1, SOX11</i>	Primary	Sedimentation	128	110	Ta-T4, grade 1-4	Benign urological disorders, healthy	qMSP	85.2	94.5	0.939		20 11
<i>MYO3A, CA10, NKX6-2, DBC1, PENK</i>	Primary	Sedimentation	128	110	Ta-T4, grade 1-4	Benign urological disorders, healthy	qMSP	85.2	94.5	0.939		20 11
<i>MYO3A, CA10, NKX6-2, SOX11</i>	Primary	Sedimentation	128	110	Ta-T4, grade 1-4	Benign urological disorders, healthy	qMSP	81.3	97.3	0.939		20 11
<i>MYO3A, CA10, NKX6-2, DBC1</i>	Primary	Sedimentation	128	110	Ta-T4, grade 1-4	Benign urological disorders, healthy	qMSP	81.3	97.3	0.939		20 11
<i>GDF15</i>	Primary	Sedimentation	51	20	Not specific d	Healthy	qMSP	47.1	100			20 10
<i>HSPA2</i>	Primary	Sedimentation	51	20	Not specific d	Healthy	qMSP	58.8	100			20 10
<i>TMEFF2</i>	Primary	Sedimentation	51	20	Not specific d	Healthy	qMSP	62.8	100			20 10
<i>VIM</i>	Primary	Sedimentation	51	20	Not specific d	Healthy	qMSP	78.4	100		[16]	20 10
<i>VIM, TMEFF2</i>	Primary	Sedimentation	51	20	Not specific d	Healthy	qMSP	82	100			20 10
<i>VIM, TMEFF2, GDF15</i>	Primary	Sedimentation	51	20	Not specific d	Healthy	qMSP	94	100			20 10
<i>VIM, TMEFF2, GDF15, HSPA2</i>	Primary	Sedimentation	51	20	Not specific d	Healthy	qMSP	94	100			20 10
<i>APC, RARB, RASSF1A, SFRP1, SFRP54, SFRP5, DBC1, SFRP2</i>	Primary	Sedimentation	113	33	Ta-T3, grade 0-4	Mixed genitourin ary disorders	qMSP	52	100		[85]	20 11
<i>SFRP1</i>	Primary	Sedimentation	82	15	Stage pTa-IV	Mixed urologic diseases	MSP	36.6	93,33		[18]	20 09

<i>FANCF</i>	Primary	Sedimentation	82	15	Stage pTa-IV	Mixed urologic diseases	MSP						13.4	100	2009
<i>LOXL1</i>	Primary	Sedimentation	82	15	Stage pTa-IV	Mixed urologic diseases	MSP						40.2	73,33	2009
<i>p16INK4</i>	Primary	Sedimentation	82	15	Stage pTa-IV	Mixed urologic diseases	MSP						22	86,67	2009
<i>XAF1</i>	Primary	Sedimentation	82	15	Stage pTa-IV	Mixed urologic diseases	MSP						70.7	33,33	2009
<i>CDH1</i>	Primary	Sedimentation	82	15	Stage pTa-IV	Mixed urologic diseases	MSP						22	80,00	2009
<i>LOXL4</i>	Primary	Sedimentation	82	15	Stage pTa-IV	Mixed urologic diseases	MSP						11	/86.7	2009
<i>TIMP3</i>	Primary	Sedimentation	82	15	Stage pTa-IV	Mixed urologic diseases	MSP						8.5	/86.7	2009
<i>TIG1</i>	Primary	Sedimentation	82	15	Stage pTa-IV	Mixed urologic diseases	MSP						3.7	93,33	2009
<i>SOX9</i>	Primary	Sedimentation	82	15	Stage pTa-IV	Mixed urologic diseases	MSP						3.7	86,67	2009
<i>SALL3</i>	Primary	Sedimentation	82	15	Stage pTa-IV	Mixed urologic diseases	MSP						58	100	2009
<i>SALL3, CFTR, MT1A, HPP1, ABCC6, RASSF1A, CDH13, RPRM, MINT1, BRCA1</i>	Primary	Sedimentation	82	15	Stage pTa-IV	Mixed urologic diseases	MSP						90.2	80.0	2009
<i>SALL3, CFTR, MT1A, HPP1, ABCC6, RASSF1A, CDH13, RPRM, MINT1, BRCA1, SFRP1</i>	Primary	Sedimentation	82	15	Stage pTa-IV	Mixed urologic diseases	MSP						91.5	73.3	2009
<i>BCL2</i>	Primary	Sedimentation	108	105	Ta-T1, LG, HG	Mixed urologic diseases, Healthy	qMSP	66	0	65	57	37	64.8	97.1	2011
<i>hTERT</i>	Primary	Sedimentation	108	105	Ta-T1, LG, HG	Mixed urologic diseases, Healthy	qMSP	66	50	38	23	70	41.7	99.1	2011
<i>DAPK</i>	Primary	Sedimentation	108	105	Ta-T1, LG, HG	Mixed urologic diseases, Healthy	qMSP	27	0	20	23	28	25	90.5	2011
<i>BCL2, hTERT, DAPK</i>	Primary	Sedimentation	108	105	Ta-T1, LG, HG	Mixed urologic diseases, Healthy	qMSP	79	50	80	71	91	78.7	89.5	2011

<i>E-cad</i>	Primary	Sedimentation	57	20	Ta-T4, LG, HG	Healthy	MSP				32	38	42	32	35	NA	2010	
<i>p16</i>	Primary	Sedimentation	57	20	Ta-T4, LG, HG	Healthy	MSP				36	34	37	34	35		2010	
<i>p14</i>	Primary	Sedimentation	57	20	Ta-T4, LG, HG	Healthy	MSP				24	41	42	29	33		2010	
<i>RASSF1A</i>	Primary	Sedimentation	57	20	Ta-T4, LG, HG	Healthy	MSP				64	66	63	66	65		[87] 2010	
<i>p14, RASSF1A</i>	Primary	Sedimentation	57	20	Ta-T4, LG, HG	Healthy	MSP								75		2010	
<i>E-cad, p14, RASSF1A</i>	Primary	Sedimentation	57	20	Ta-T4, LG, HG	Healthy	MSP				75	85	85	79	83		2010	
<i>RASSF1A</i>	Recurrent	Sedimentation	15	25	Ta-T1	No recurrence	qMSP								50	32	2008	
<i>ECAD</i>	Recurrent	Sedimentation	15	25	Ta-T1	No recurrence	qMSP								7	84	2008	
<i>APC</i>	Recurrent	Sedimentation	15	25	Ta-T1	No recurrence	qMSP								27	80	2008	
<i>DAPK</i>	Recurrent	Sedimentation	15	25	Ta-T1	No recurrence	qMSP								0	96	2008	
<i>MGMT</i>	Recurrent	Sedimentation	15	25	Ta-T1	No recurrence	qMSP								20	92	2008	
<i>BCL2</i>	Recurrent	Sedimentation	15	25	Ta-T1	No recurrence	qMSP								13	96	2008	
<i>TERT</i>	Recurrent	Sedimentation	15	25	Ta-T1	No recurrence	qMSP								13	100	[24] 2008	
<i>EDNRB</i>	Recurrent	Sedimentation	15	25	Ta-T1	No recurrence	qMSP								20	80	2008	
<i>WIF1</i>	Recurrent	Sedimentation	15	25	Ta-T1	No recurrence	qMSP								20	76	2008	
<i>TNFRSF25</i>	Recurrent	Sedimentation	15	25	Ta-T1	No recurrence	qMSP								40	56	2008	
<i>IGFBP</i>	Recurrent	Sedimentation	15	25	Ta-T1	No recurrence	qMSP								20	84	2008	
<i>RASSF1A, ECAD, APC, DAPK, MGMT, BCL2, TERT, EDNRB, WIF1, TNFRSF25, IGFBP</i>	Recurrent	Sedimentation	15	25	Ta-T1	No recurrence	qMSP								86	8	0.448	2008
<i>SALL3, CFTR, ABCC6, HPR1, RASSF1A, MT1A, ALX4, CDH13, RPRM, MINT1, BRCA1</i>	Primary	Sedimentation	132	23/7	Stage 0a-IV	Mixed urologic diseases/healthy	MSP								91.7	87.0		2007
<i>SALL3</i>	Primary	Sedimentation	132	23/7	Stage 0a-IV	Mixed urologic diseases/healthy	MSP	45.6	72.0	100.0	100.0				58.3	100/100		[17] 2007
<i>CFTR</i>	Primary	Sedimentation	132	23/7	Stage 0a-IV	Mixed urologic diseases/healthy	MSP	52.9	52.0	100.0	100.0				55.3	100/100		2007
<i>ABCC6</i>	Primary	Sedimentation	132	23/7	Stage 0a-IV	Mixed urologic	MSP	27.9	250.0	50.0	50.0				36.4	100/100		2007

						diseases/h ealthy									
<i>HPR1</i>	Primary	Sedimen tation	132	23/7	Stage 0a-IV	Mixed urologic diseases/h ealthy	MSP	32. 4	42.0	0.0	50.0		34.8	100/100	20 07
<i>BCL2</i>	Primary	Sedimen tation	132	23/7	Stage 0a-IV	Mixed urologic diseases/h ealthy	MSP	22. 1	34.0	0.0	50.0		27.3	100/100	20 07
<i>ALX4</i>	Primary	Sedimen tation	132	23/7	Stage 0a-IV	Mixed urologic diseases/h ealthy	MSP	22. 1	24.0	50. 0	0.0		25	100/100	20 07
<i>RUNX3</i>	Primary	Sedimen tation	132	23/7	Stage 0a-IV	Mixed urologic diseases/h ealthy	MSP	25. 0	44.0	25. 0	0.0		32.6	95.7 /100	20 07
<i>ITGA4</i>	Primary	Sedimen tation	132	23/7	Stage 0a-IV	Mixed urologic diseases/h ealthy	MSP	23. 5	42.0	50. 0	50.0		31.1	95.7/100	20 07
<i>RASSF1A</i>	Primary	Sedimen tation	132	23/7	Stage 0a-IV	Mixed urologic diseases/h ealthy	MSP	27. 9	50.0	25. 0	100.0		35.6	91.3/100	20 07
<i>MYOD1</i>	Primary	Sedimen tation	132	23/7	Stage 0a-IV	Mixed urologic diseases/h ealthy	MSP	17. 6	30.0	0.0	50.0		22	100/100	20 07
<i>MT1A</i>	Primary	Sedimen tation	132	23/7	Stage 0a-IV	Mixed urologic diseases/h ealthy	MSP	32. 4	42.0	25. 0	50.0		34.8	91.3/100	20 07
<i>DRM</i>	Primary	Sedimen tation	132	23/7	Stage 0a-IV	Mixed urologic diseases/h ealthy	MSP	22. 1	18.0	25. 0	0.0		18.9	100/100	20 07
<i>BMP3B</i>	Primary	Sedimen tation	132	23/7	Stage 0a-IV	Mixed urologic diseases/h ealthy	MSP	13. 2	22.0	25. 0	0.0		15.9	100/100	20 07
<i>CCNA1</i>	Primary	Sedimen tation	132	23/7	Stage 0a-IV	Mixed urologic diseases/h ealthy	MSP	10. 3	24.0	25. 0	0.0		15.9	100/100	20 07
<i>CDH13</i>	Primary	Sedimen tation	132	23/7	Stage 0a-IV	Mixed urologic diseases/h ealthy	MSP	17. 6	18.0	25. 0	0.0		16.7	100/100	20 07
<i>RPRM</i>	Primary	Sedimen tation	132	23/7	Stage 0a-IV	Mixed urologic diseases/h ealthy	MSP	13. 2	14.0	50. 0	0.0		14.4	100/100	20 07
<i>MINT1</i>	Primary	Sedimen tation	132	23/7	Stage 0a-IV	Mixed urologic	MSP	8.8	14.0	25. 0	50.0		12.9	100/100	20 07

							diseases/h ealthy											
<i>BRCA1</i>	Primary		Sedimen tation	132	23/7	Stage 0a-IV	Mixed urologic diseases/h ealthy	MSP	10. 3	16.0	25. 0	0.0		12.1	100/100			20 07
<i>PTCHD2</i>	Primary		Sedimen tation	132	23/7	Stage 0a-IV	Mixed urologic diseases/h ealthy	MSP	5.9	4.0	25. 0	0.0		5.3	100/100			20 07
<i>TMS1</i>	Primary		Sedimen tation	132	23/7	Stage 0a-IV	Mixed urologic diseases/h ealthy	MSP	2.9	4.0	0.0	0.0		3	100/100			20 07
<i>GSTP1</i>	Primary		Sedimen tation	132	23/7	Stage 0a-IV	Mixed urologic diseases/h ealthy	MSP	2.9	2.0	0.0	0.0		2.3	100/100			20 07
<i>P14</i>	Primary	Traini ng	Sedimen tation	8	10	HG	Benign	MSP							50		25	20 06
<i>P16</i>	Primary	Traini ng	Sedimen tation	8	10	HG	Benign	MSP							57		62	20 06
<i>RASSF1</i>	Primary	Traini ng	Sedimen tation	8	10	HG	Benign	MSP							86		44	20 06
<i>APC</i>	Primary	Traini ng	Sedimen tation	8	10	HG	Benign	MSP							86		20	20 06
<i>GSTP1</i>	Primary	Traini ng	Sedimen tation	8	10	HG	Benign	MSP							50		14	20 06
<i>E-cad</i>	Primary	Traini ng	Sedimen tation	8	10	HG	Benign	MSP							50		11	20 06
<i>Cyclin D2</i>	Primary	Traini ng	Sedimen tation	8	10	HG	Benign	MSP							37		0	20 06
<i>CMI</i>	Primary	Traini ng	Sedimen tation	8	10	HG	Benign	MSP							100		50	20 06
<i>P14</i>	Primary	Valida tion	Sedimen tation	32	5	Not specifie d	Benign	MSP								48	40	[88] 20 06
<i>P16</i>	Primary	Valida tion	Sedimen tation	32	5	Not specifie d	Benign	MSP								63	60	20 06
<i>RASSF1</i>	Primary	Valida tion	Sedimen tation	32	5	Not specifie d	Benign	MSP								59	80	20 06
<i>APC</i>	Primary	Valida tion	Sedimen tation	32	5	Not specifie d	Benign	MSP								55	0	20 06
<i>GSTP1</i>	Primary	Valida tion	Sedimen tation	32	5	Not specifie d	Benign	MSP								16	67	20 06
<i>E-cad</i>	Primary	Valida tion	Sedimen tation	32	5	Not specifie d	Benign	MSP								14	17	20 06
<i>Cyclin D2</i>	Primary	Valida tion	Sedimen tation	32	5	Not specifie d	Benign	MSP								35	0	20 06

CMI	Primary	Validation	Sedimentation	32	5	Not specified	Benign	MSP										2006
<i>miR-9-3, miR124-2, miR-124-3, miR-137</i>	Recurrent		Sedimentation	25	107	Ta-T1	No current recurrence	Pyrosequencing										[29] 2018
<i>miR-129-2/miR-663a</i>			Sedimentation	49	/25	Papillary, invasive, LG, HG	Healthy	qMSP										[89] 2017
<i>miR-137</i>		Training	Sedimentation	86	20	≥Ta, grade 1-3	Cancer free, not further specified	qMSP										77.91 77.78 0.782 2013
<i>miR-124-2</i>		Training	Sedimentation	86	20	≥Ta, grade 1-3	Cancer free, not further specified	qMSP										69.77 88.89 0.769 2013
<i>miR-124-3</i>		Training	Sedimentation	86	20	≥Ta, grade 1-3	Cancer free, not further specified	qMSP										[90] 65.12 97.22 0.805 2013
<i>miR-9-3</i>		Training	Sedimentation	86	20	≥Ta, grade 1-3	Cancer free, not further specified	qMSP										69.41 86.11 0.778 2013
<i>OTX1, ONECUT2, TWIST</i>	Primary		Sedimentation	74	80	Ta-T4, grade 1-3	Benign causes of hematuria	SNaPshot and MSP										0.900 2016
<i>OTX1</i>	Primary		Sedimentation	74	80	Ta-T4, grade 1-3	Benign causes of hematuria	SNaPshot										69.2 62 0.656 2016
<i>ONECUT2</i>	Primary		Sedimentation	74	80	Ta-T4, grade 1-3	Benign causes of hematuria	SNaPshot										[91] 77.9 81.8 0.799 2016
<i>TWIST</i>	Primary		Sedimentation	74	80	Ta-T4, grade 1-3	Benign causes of hematuria	MSP										70 89.7 0.799 2016
<i>APC_a, TERT_a, TERT_b, EDNRB</i>	Recurrent	Training	Sedimentation	68	91	Ta-T1, grade 1-3	Non-BC urine	MS-MLPA										0.82 2012
<i>APC_a, TERT_a, TERT_b, EDNRB</i>	Recurrent	Validation	Sedimentation	49	60	Ta-T1, grade 1-3	No recurrence	MS-MLPA	53	100	100							51 100 63 58 0.69 [27] 2012
<i>APC_a, TERT_a, TERT_b, EDNRB</i>	Recurrent	Validation	Sedimentation	65	29	Ta-T4, grade 0-3	No recurrence	MS-MLPA	71	100	83							68 100 72 55 2012
<i>RASSF1A</i>	Primary		Sedimentation	14	10	≥Ta, grade 1-3	Normal, not further specified	MSP										40 55.6 50 100 [92] 2003

MSP = methylation specific PCR, qMSP = quantitative MSP, HG = high grade, LG = low grade, PUNLMP = papillary urothelial neoplasm of low malignant potential, NMIBC = nonmuscle invasive bladder cancer, MIBC = muscle invasive bladder cancer, BC = bladder cancer, MS-MLPA = methylation-specific multiplex ligation-dependent probe amplification, SNUPE = single-nucleotide primer extension, PIN = prostatic intraepithelial neoplasia, DRE = digital rectal examination, GS = Gleason score, MS-HRM = methylation-sensitive high-resolution melting.

Supplementary Table S2. Prostate cancer.

Biomarkers	Urine Collection	Sample Processing	Cancer (n)	Controls (n)	Pathology	Control Population	Method	Overall			Ref.	Year
								Sens. (%)	Spec. (%)	AUC (%)		
<i>PCDH17, TCF21</i>		Sedimentation	50	48	GS 6–9	Healthy	qMSP	26	100	0.650	[39]	2011
<i>PCDH17</i>		Sedimentation	50	48	GS 6–9	Healthy	qMSP	12	100			2011
<i>TCF21</i>		Sedimentation	50	48	GS 6–9	Healthy	qMSP	20	100			2011
<i>GDF15</i>	Morning	Sedimentation	20	20	Not specified	Healthy	qMSP	20	100			2010
<i>HSPA2</i>	Morning	Sedimentation	20	0	Not specified	Healthy	qMSP	15	100		[16]	2010
<i>TMEFF2</i>	Morning	Sedimentation	20	0	Not specified	Healthy	qMSP	0	100			2010
<i>VIM</i>	Morning	Sedimentation	20	0	Not specified	Healthy	qMSP	5	100			2010
<i>APC</i>	Post DRE	Sedimentation	145	123	GS 6–10	Benign	qMSP			0.617		2018
<i>HOXD3</i>	Post DRE	Sedimentation	145	123	GS 6–10	Benign	qMSP			0.718		2018
<i>TGFbeta2</i>	Post DRE	Sedimentation	145	123	GS 6–10	Benign	qMSP			0.596		2018
<i>GSTP1</i>	Post DRE	Sedimentation	145	123	GS 6–10	Benign	qMSP			0.605	[93]	2018
<i>KLK10</i>	Post DRE	Sedimentation	145	123	GS 6–10	Benign	qMSP			0.552		2018
<i>TBX15</i>	Post DRE	Sedimentation	145	123	GS 6–10	Benign	qMSP			0.502		2018
<i>Procore</i>	Post DRE	Sedimentation	145	123	GS 6–10	Benign	qMSP			0.730		2018
<i>GSTP1, RARβ2, APC</i>	Morning	Sedimentation	87	32	T2-T3b	Asymptomatic donors	qMSP	94.3	84.4			
<i>miR-34b/c, miR-193b</i>	Morning	Sedimentation	87	32	T2-T3b	Asymptomatic donors	qMSP	95.4	84.4		[33]	2018
<i>GSTP1, RARβ2, APC, miR-34b/c, miR-193b</i>	Morning	Sedimentation	87	32	T2-T3b	Asymptomatic donors	qMSP	100.0	75.0			2018
<i>ADCY4</i>	Post DRE	Sedimentation	38	49	GS 6–10	Negative biopsy results	Nested qMSP	61	78			2018
<i>ADCY4</i>	First Void	Sedimentation	32	35	GS 6–10	Negative biopsy results	Nested qMSP	56	69			2018
<i>AOX1rc</i>	Post DRE	Sedimentation	38	49	GS 6–10	Negative biopsy results	Nested qMSP	71	69		[36]	2018
<i>AOX1rc</i>	First Void	Sedimentation	32	35	GS 6–10	Negative biopsy results	Nested qMSP	44	83			2018
<i>APC2</i>	Post DRE	Sedimentation	38	49	GS 6–10	Negative biopsy results	Nested qMSP	26	90			2018

<i>APC2</i>	First Void	Sedimentation	32	35	GS 6–10	Negative biopsy results	Nested qMSP	13	91	2018
<i>CXCL14</i>	Post DRE	Sedimentation	38	49	GS 6–10	Negative biopsy results	Nested qMSP	21	100	2018
<i>CXCL14</i>	First Void	Sedimentation	32	35	GS 6–10	Negative biopsy results	Nested qMSP	28	97	2018
<i>CXCL14rc</i>	Post DRE	Sedimentation	38	49	GS 6–10	Negative biopsy results	Nested qMSP	16	100	2018
<i>CXCL14rc</i>	First Void	Sedimentation	32	35	GS 6–10	Negative biopsy results	Nested qMSP	13	100	2018
<i>CXCL14 Comb</i>	Post DRE	Sedimentation	38	49	GS 6–10	Negative biopsy results	Nested qMSP	24	100	2018
<i>CXCL14 Comb</i>	First Void	Sedimentation	32	35	GS 6–10	Negative biopsy results	Nested qMSP	34	97	2018
<i>EPHX3</i>	Post DRE	Sedimentation	38	49	GS 6–10	Negative biopsy results	Nested qMSP	66	71	2018
<i>EPHX3</i>	First Void	Sedimentation	32	35	GS 6–10	Negative biopsy results	Nested qMSP	56	69	2018
<i>KIFC2</i>	Post DRE	Sedimentation	38	49	GS 6–10	Negative biopsy results	Nested qMSP	66	78	2018
<i>KIFC2</i>	First Void	Sedimentation	32	35	GS 6–10	Negative biopsy results	Nested qMSP	56	80	2018
<i>KIFC2rc</i>	Post DRE	Sedimentation	38	49	GS 6–10	Negative biopsy results	Nested qMSP	53	86	2018
<i>KIFC2rc</i>	First Void	Sedimentation	32	35	GS 6–10	Negative biopsy results	Nested qMSP	34	91	2018
<i>KIFC2 Comb</i>	Post DRE	Sedimentation	38	49	GS 6–10	Negative biopsy results	Nested qMSP	79	69	2018
<i>KIFC2 Comb</i>	First Void	Sedimentation	32	35	GS 6–10	Negative biopsy results	Nested qMSP	66	77	2018
<i>GFRA2</i>	Post DRE	Sedimentation	38	49	GS 6–10	Negative biopsy results	Nested qMSP	45	84	2018
<i>GFRA2</i>	First Void	Sedimentation	32	35	GS 6–10	Negative biopsy results	Nested qMSP	41	83	2018
<i>GSTP1</i>	Post DRE	Sedimentation	38	49	GS 6–10	Negative biopsy results	Nested qMSP	47	82	2018
<i>GSTP1</i>	First Void	Sedimentation	32	35	GS 6–10	Negative biopsy results	Nested qMSP	47	83	2018
<i>HEMK1</i>	Post DRE	Sedimentation	38	49	GS 6–10	Negative biopsy results	Nested qMSP	39	94	2018
<i>HEMK1</i>	First Void	Sedimentation	32	35	GS 6–10	Negative biopsy results	Nested qMSP	25	91	2018
<i>HOXA7</i>	Post DRE	Sedimentation	38	49	GS 6–10	Negative biopsy results	Nested qMSP	84	80	2018
<i>HOXA7</i>	First Void	Sedimentation	32	35	GS 6–10	Negative biopsy results	Nested qMSP	66	66	2018
<i>HOXB5</i>	Post DRE	Sedimentation	38	49	GS 6–10	Negative biopsy results	Nested qMSP	76	82	2018

<i>HOXB5</i>	First Void	Sedimentation	32	35	GS 6–10	Negative biopsy results	Nested qMSP	72	66	2018
<i>HOXB5rc</i>	Post DRE	Sedimentation	38	49	GS 6–10	Negative biopsy results	Nested qMSP	71	71	2018
<i>HOXB5rc</i>	First Void	Sedimentation	32	35	GS 6–10	Negative biopsy results	Nested qMSP	69	66	2018
<i>HOXB5 Comb</i>	Post DRE	Sedimentation	38	49	GS 6–10	Negative biopsy results	Nested qMSP	84	59	2018
<i>HOXB5 Comb</i>	First Void	Sedimentation	32	35	GS 6–10	Negative biopsy results	Nested qMSP	88	57	2018
<i>HOXD3a</i>	Post DRE	Sedimentation	38	49	GS 6–10	Negative biopsy results	Nested qMSP	50	92	2018
<i>HOXD3a</i>	First Void	Sedimentation	32	35	GS 6–10	Negative biopsy results	Nested qMSP	47	86	2018
<i>HOXD3b</i>	Post DRE	Sedimentation	38	49	GS 6–10	Negative biopsy results	Nested qMSP	76	76	2018
<i>HOXD3b</i>	First Void	Sedimentation	32	35	GS 6–10	Negative biopsy results	Nested qMSP	97	60	2018
<i>HOXD9</i>	Post DRE	Sedimentation	38	49	GS 6–10	Negative biopsy results	Nested qMSP	68	59	2018
<i>HOXD9</i>	First Void	Sedimentation	32	35	GS 6–10	Negative biopsy results	Nested qMSP	63	71	2018
<i>HOXD10</i>	Post DRE	Sedimentation	38	49	GS 6–10	Negative biopsy results	Nested qMSP	61	86	2018
<i>HOXD10</i>	First Void	Sedimentation	32	35	GS 6–10	Negative biopsy results	Nested qMSP	53	77	2018
<i>MOXD1</i>	Post DRE	Sedimentation	38	49	GS 6–10	Negative biopsy results	Nested qMSP	42	84	2018
<i>MOXD1</i>	First Void	Sedimentation	32	35	GS 6–10	Negative biopsy results	Nested qMSP	47	91	2018
<i>NEUROG3</i>	Post DRE	Sedimentation	38	49	GS 6–10	Negative biopsy results	Nested qMSP	37	86	2018
<i>NEUROG3</i>	First Void	Sedimentation	32	35	GS 6–10	Negative biopsy results	Nested qMSP	22	94	2018
<i>NODAL</i>	Post DRE	Sedimentation	38	49	GS 6–10	Negative biopsy results	Nested qMSP	63	82	2018
<i>NODAL</i>	First Void	Sedimentation	32	35	GS 6–10	Negative biopsy results	Nested qMSP	50	80	2018
<i>NODALrc</i>	Post DRE	Sedimentation	38	49	GS 6–10	Negative biopsy results	Nested qMSP	53	84	2018
<i>NODALrc</i>	First Void	Sedimentation	32	35	GS 6–10	Negative biopsy results	Nested qMSP	31	80	2018
<i>NODAL Comb</i>	Post DRE	Sedimentation	38	49	GS 6–10	Negative biopsy results	Nested qMSP	79	71	2018
<i>NODAL Comb</i>	First Void	Sedimentation	32	35	GS 6–10	Negative biopsy results	Nested qMSP	59	69	2018
<i>RASSF5</i>	Post DRE	Sedimentation	38	49	GS 6–10	Negative biopsy results	Nested qMSP	24	94	2018

<i>RASSF5</i>	First Void	Sedimentation	32	35	GS 6–10	Negative biopsy results	Nested qMSP	28	100		2018
<i>RASSF5rc</i>	Post DRE	Sedimentation	38	49	GS 6–10	Negative biopsy results	Nested qMSP	26	88		2018
<i>RASSF5rc</i>	First Void	Sedimentation	32	35	GS 6–10	Negative biopsy results	Nested qMSP	34	86		2018
<i>RASSF5 Comb</i>	Post DRE	Sedimentation	38	49	GS 6–10	Negative biopsy results	Nested qMSP	45	82		2018
<i>RASSF5 Comb</i>	First Void	Sedimentation	32	35	GS 6–10	Negative biopsy results	Nested qMSP	59	86		2018
>= 6 positive of 19 markers	Post DRE	Sedimentation	38	49	GS 6–10	Negative biopsy results	Nested qMSP	89	71		2018
>= 6 positive of 19 markers	First Void	Sedimentation	32	35	GS 6–10	Negative biopsy results	Nested qMSP	94	71		2018
<i>GSTP1</i>	Post DRE	Filtration (8 µm)	38	20	GS 6–10	Negative biopsy results	qMSP	41.9	82.4		2018
<i>APC</i>	Post DRE	Filtration (8 µm)	38	20	GS 6–10	Negative biopsy results	qMSP	41.9	94.1		2018
<i>RASSF1A</i>	Post DRE	Filtration (8 µm)	38	20	GS 6–10	Negative biopsy results	qMSP	64.5	35.3		2018
<i>PITX2</i>	Post DRE	Filtration (8 µm)	38	20	GS 6–10	Negative biopsy results	qMSP	16.1	100		2018
<i>C1orf114</i>	Post DRE	Filtration (8 µm)	38	20	GS 6–10	Negative biopsy results	qMSP	25.8	100		2018
<i>GSTP1, APC, RASSF1A, PITX2, C1orf114</i>	Post DRE	Filtration (8 µm)	38	20	GS 6–10	Negative biopsy results	qMSP	80.7	17.65		2018
<i>GSTP1</i>	Pre DRE	Filtration (8 µm)	74	25	GS 6–10	Negative biopsy results	qMSP	21.3	76.5	[49]	2018
<i>APC</i>	Pre DRE	Filtration (8 µm)	74	25	GS 6–10	Negative biopsy results	qMSP	17.0	94.1		2018
<i>RASSF1A</i>	Pre DRE	Filtration (8 µm)	74	25	GS 6–10	Negative biopsy results	qMSP	46.8	41.2		2018
<i>PITX2</i>	Pre DRE	Filtration (8 µm)	74	25	GS 6–10	Negative biopsy results	qMSP	4.3	100		2018
<i>C1orf114</i>	Pre DRE	Filtration (8 µm)	74	25	GS 6–10	Negative biopsy results	qMSP	6.4	100		2018
<i>GSTP1, APC, RASSF1A, PITX2, C1orf114</i>	Pre DRE	Filtration (8 µm)	74	25	GS 6–10	Negative biopsy results	qMSP	59.6	29.4		2018
<i>miR-34b/c</i>	No DRE	Sedimentation	95	46	≥GS 6	No urological malignancy, healthy	qMSP	89.5	47.8	0.69	2017
<i>miR-193b</i>	No DRE	Sedimentation	95	46	≥GS 6	No urological malignancy, healthy	qMSP	91.6	95.7	0.96	2017

<i>miR-34b/c+ miR-193b</i>	No DRE	Sedimentation	95	46	≥GS 6	No urological malignancy, healthy	qMSP	90.5	97.8	0.97		2017
<i>cg05163709</i>	Post DRE	Sedimentation	62	73	Not specified	Not specified	Pyrosequencing	94.6	78.3	0.915	[94]	2015
<i>cg27539833</i> (hypomethylated)	Post DRE	Sedimentation	62	73	Not specified	Not specified	Pyrosequencing	75	70.3	0.729		2015
<i>GSTP1A</i>			5	4	GS 6	Negative biopsy result	qMSP	40	100		[95]	2015
<i>GSTP1B</i>			5	4	GS 6	Negative biopsy result	qMSP	20	100			2015
<i>RASSF1A</i>			5	4	GS 6	Negative biopsy result	qMSP	60	25			2015
<i>RASSF1B</i>			5	4	GS 6	Negative biopsy result	qMSP	60	50			2015
<i>APCA</i>			5	4	GS 6	Negative biopsy result	qMSP	0	100			2015
<i>APCB</i>			5	4	GS 6	Negative biopsy result	qMSP	0	100			2015
<i>DLEC1</i>	Post DRE	Sedimentation	30	30	Not specified	BPH	MSP	36.7	NA		[96]	2015
<i>RARB, GSTP1, RASSF1</i>		Sedimentation	253	32	Not specified	BPH	qMSP	60.1	NA		[97]	2014
<i>RASSF1</i>		Sedimentation	253	32	Not specified	BPH	qMSP	44.7	84.4			2014
<i>RARβ</i>		Sedimentation	253	32	Not specified	BPH	qMSP	29.2	81.3			2014
<i>GSTP1</i>		Sedimentation	253	32	Not specified	BPH	qMSP	11.1	96.9			2014
<i>APC</i>	Post DRE	Sedimentation	10	5	Organ confined	Cancer free (not further specified)	qMSP	50	60		[34]	2014
<i>HOXD3</i>	Post DRE	Sedimentation	10	5	Organ confined	Cancer free (not further specified)	qMSP	100	100			2014
<i>TGFB2</i>	Post DRE	Sedimentation	10	5	Organ confined	Cancer free (not further specified)	qMSP	30	100			2014
<i>TGFB2, HOXD3, APC</i>	Post DRE	Sedimentation	10	5	Organ confined	Cancer free (not further specified)	qMSP	100	60			2014
<i>GSTP1</i>	Post DRE	Sedimentation	14	52	Biopsy positive	Biopsy negative	MSP	42.9	76.9		[98]	2013
<i>RASSF1A</i>	Post DRE	Sedimentation	14	52	Biopsy positive	Biopsy negative	MSP	42.9	71.2			2013
<i>GSTP1</i>	Catheter	Sedimentation	34		GS 6-7		qMSP	3	NA		[99]	2011
<i>RARβ</i>	Catheter	Sedimentation	34		GS 6-7		qMSP	44	NA			2011
<i>RASSF1</i>	Catheter	Sedimentation	34		GS 6-7		qMSP	71	NA			2011

<i>RASSF1, GSTP1, RARβ</i>	Catheter	Sedimentation	34		GS 6-7		qMSP	82	NA			2011
<i>GSTP1, RASSF1A</i>	Post prostatic massage	Sedimentation	34	79	GS 6-10	Negative biopsy	MSP	53.3	45.9	0.788	[100]	2010
<i>GSTP1</i>	Post DRE	Sedimentation	91	50/51	GS 4-9	Young asymptomatic/B iopsy negative	qMSP	81	94/41			2009
<i>RASSF2</i>	Post DRE	Sedimentation	91	50/51	GS 4-9	Young asymptomatic/B iopsy negative	qMSP	59	63/18		[101]	2009
<i>HIST1H4K</i>	Post DRE	Sedimentation	91	50/51	GS 4-9	Young asymptomatic/B iopsy negative	qMSP	92	86/16			2009
<i>TFAP2E</i>	Post DRE	Sedimentation	91	50/51	GS 4-9	Young asymptomatic/B iopsy negative	qMSP	100	18/0			2009
<i>GSTP1</i>	Post DRE	Sedimentation	24	69	<6-10	BPH	qMSP	75	98		[102]	2008
<i>RASSF1a</i>	Post prostatic massage	Sedimentation	95	38	GS 4-10	Negative biopsy	qMSP	77.9	92.1	0.85		2007
<i>CDH1</i>	Post prostatic massage	Sedimentation	95	38	GS 4-10	Negative biopsy	qMSP	30.5	94.7			2007
<i>APC</i>	Post prostatic massage	Sedimentation	95	38	GS 4-10	Negative biopsy	qMSP	50.5	94.7	0.74		2007
<i>DAPK</i>	Post prostatic massage	Sedimentation	95	38	GS 4-10	Negative biopsy	qMSP	28.4	94.7			2007
<i>MGMT</i>	Post prostatic massage	Sedimentation	95	38	GS 4-10	Negative biopsy	qMSP	14.7	97.4		[103]	2007
<i>p16</i>	Post prostatic massage	Sedimentation	95	38	GS 4-10	Negative biopsy	qMSP	11.6	94.7			2007
<i>p14</i>	Post prostatic massage	Sedimentation	95	38	GS 4-10	Negative biopsy	qMSP	6.3	97.4			2007
<i>GSTP1</i>	Post prostatic massage	Sedimentation	95	38	GS 4-10	Negative biopsy	qMSP	83.2	86.8	0.86		2007
<i>RARβ2</i>	Post prostatic massage	Sedimentation	95	38	GS 4-10	Negative biopsy	qMSP	62.1	97.4	0.8		2007
<i>TIMP3</i>	Post prostatic massage	Sedimentation	95	38	GS 4-10	Negative biopsy	qMSP	43.2	100			2007

<i>GSTP1, RASSF1a, RARβ2, APC</i>	Post prostatic massage	Sedimentation	95	38	GS 4–10	Negative biopsy	qMSP	86	NA		2007
<i>APC</i>		Sedimentation	52	91	GS 4–10	No history of genitourinary diseases	qMSP	48	96		2005
<i>ARF</i>		Sedimentation	52	91	GS 4–10	No history of genitourinary diseases	qMSP	37	100		2005
<i>CDH1</i>		Sedimentation	52	91	GS 4–10	No history of genitourinary diseases	qMSP	77	94		2005
<i>GSTP1</i>		Sedimentation	52	91	GS 4–10	No history of genitourinary diseases	qMSP	48	100		2005
<i>MGMT</i>		Sedimentation	52	91	GS 4–10	No history of genitourinary diseases	qMSP	19	100		2005
<i>p16</i>		Sedimentation	52	91	GS 4–10	No history of genitourinary diseases	qMSP	37	100	[104]	2005
<i>RAR-2</i>		Sedimentation	52	91	GS 4–10	No history of genitourinary diseases	qMSP	35	91		2005
<i>RASSF1A</i>		Sedimentation	52	91	GS 4–10	No history of genitourinary diseases	qMSP	73	89		2005
<i>TIMP3</i>		Sedimentation	52	91	GS 4–10	No history of genitourinary diseases	qMSP	37	91		2005
<i>p16, ARF, MGMT, GSTP1</i>		Sedimentation	52	91	GS 4–10	No history of genitourinary diseases	qMSP	87	100		2005
<i>GSTP1</i>	Post prostatic massage		40	45	Intracapsular cancer and locally advanced or systemic cancer	BPH	MSP	73	98	[105]	2001
<i>APC</i>	Post DRE	Sedimentation	97	83	GS 6–9	BPH, PIN, Atypia	qMSP		0.585		2009
<i>GSTP1</i>	Post DRE	Sedimentation	97	83	GS 6–9	BPH, PIN, Atypia	qMSP		0.664	[106]	2009
<i>RARβ2</i>	Post DRE	Sedimentation	97	83	GS 6–9	BPH, PIN, Atypia	qMSP		0.705		2009
<i>RARβ2, GSTP1, APC</i>	Post DRE	Sedimentation	97	83	GS 6–9	BPH, PIN, Atypia	qMSP	60	81	0.72	2009
<i>GSTP1</i>	Post DRE	Sedimentation	54	67	GS 4–10	Biopsy negative	qMSP	33	95	0.65	[107] 2008

<i>RARβ</i>	Post DRE	Sedimentation	54	67	GS 4–10	Biopsy negative	qMSP	40	84	0.59		2008
<i>APC</i>	Post DRE	Sedimentation	54	67	GS 4–10	Biopsy negative	qMSP	36	91	0.59		2008
<i>GSTP1, APC</i>	Post DRE	Sedimentation	54	67	GS 4–10	Biopsy negative	qMSP	51	89	0.68		2008
<i>GSTP1, APC, RARβ</i>	Post DRE	Sedimentation	54	67	GS 4–10	Biopsy negative	qMSP	55	80	0.69		2008
<i>GSTP1</i>	Post DRE	Sedimentation	57	56	GS 4–10	Biopsy negative	qMSP	36	91	0.64		2008
<i>RARβ</i>	Post DRE	Sedimentation	57	56	GS 4–10	Biopsy negative	qMSP	29	91	0.64		2008
<i>APC</i>	Post DRE	Sedimentation	57	56	GS 4–10	Biopsy negative	qMSP	51	83	0.62		2008
<i>GSTP1, APC</i>	Post DRE	Sedimentation	57	56	GS 4–10	Biopsy negative	qMSP	53	80	0.67		2008
<i>GSTP1, APC, RARβ</i>	Post DRE	Sedimentation	57	56	GS 4–10	Biopsy negative	qMSP	53	76	0.65		2008
<i>GSTP1</i>	Post DRE/biopsy	Sedimentation	12	5	GS 6–7	Biopsy Negative	MSP	25/17	80/80			2006
<i>APC</i>	Post DRE/biopsy	Sedimentation	12	5	GS 6–7	Biopsy Negative	MSP	8/17	80/80		[35]	2006
<i>EDNRB</i>	Post DRE/biopsy	Sedimentation	12	5	GS 6–7	Biopsy Negative	MSP	63/88	25/40			2006
<i>EDNRB, APC, GSTP1</i>	Post DRE/biopsy	Sedimentation	12	5	GS 6–7	Biopsy Negative	MSP	100	40			2006
<i>GSTP1</i>	Post biopsy	Sedimentation	18	18	Not specified	Negative Biopsy	MSP	58	39		[108]	2003
<i>GSTP1</i>		Sedimentation	69	31	Not specified	BPH	qMSP	18.8	96.8			2002
<i>GSTP1</i>		Sedimentation	69	31	Not specified	BPH	MSP	30.4	96.8		[109]	2002
<i>GSTP1</i>	Post Prostatic massage		11	10	Not specified	BPH	MSP	36	100			2001
<i>GSTP1</i>	Post Prostatic massage		29	40	Not specified	BPH	MSP	76	97		[110]	2001
<i>GSTP1</i>	Post DRE		65	45	Clinically localized cancer	BPH	MSP	97.8	88.9	0.936	[111]	2013

MSP = methylation specific PCR, qMSP = quantitative MSP, DRE = digital rectal examination, GS = Gleason score, PIN = prostatic intraepithelial neoplasia, BPH = benign prostate hyperplasia