

Expanded View Figures

Figure EV1. *Tgif1* deletion does not affect pancreas function or histology (related to Fig 1).

- A *Tgif1*^{+/+} or *Tgif1*^{-/-} mice were fasted for 6 h and blood glucose levels were measured using the ReliON method. Mice injected with glucose at 2 g/kg body weight were used as controls. ****P* < 0.001; based on a two-tailed Student's test.
- B Body weight of *Tgif1*^{+/+} or *Tgif1*^{-/-} mice was recorded every week for 25 weeks.
- C FFPE pancreatic sections from *Tgif1*^{+/+} or *Tgif1*^{-/-} mice were stained with H&E. Representative pictures at 20× are shown (*n* = 23). Scale bars, 200 μM.
- D Body weight of control or *Tgif1*^{KO} mice was measured at the age of 25 weeks.
- E Total lysates from pancreas of control or *Tgif1*^{KO} mice were pooled and analyzed by immunoblotting using antibodies to TGIF1, pSmad2, and Smad2 used as control (*n* = 6).
- F FFPE pancreatic sections from control or *Tgif1*^{KO} mice were immunostained with antibodies to Insulin or Glucagon and revealed by IHC. Representative pictures at 20× are shown (*n* = 30). Scale bars, 200 μM.
- G Fasting blood glucose of control or *Tgif1*^{KO} mice was measured as described in (A).
- H Expression of TGF-β1 in tissue microarrays of human PDAC samples was analyzed by IHC. Representative pictures at 40× are shown. Scale bars, 100 μM.
- I FFPE pancreatic sections from control, *KC*, *KPC* or *KIC* mice were immunostained with anti-pSmad2 antibody and revealed by IF and DAPI. Representative pictures at 40× are shown (*n* = 7–30). Scale bars, 100 μM.
- J Tumor-free survival of control, *Tgif1*^{KO}, *KC* and *KTC* mice at 25 weeks of age, time at which 100% of *KTC* mice succumbed to PDAC.
- K FFPE pancreatic sections from control, *Tgif1*^{KO}, *KC* or *KTC* mice were immunostained with antibodies to chromogranin A or Amylase and revealed by IHC. Representative pictures at 40× are shown (*n* = 30). Scale bars, 100 μM.

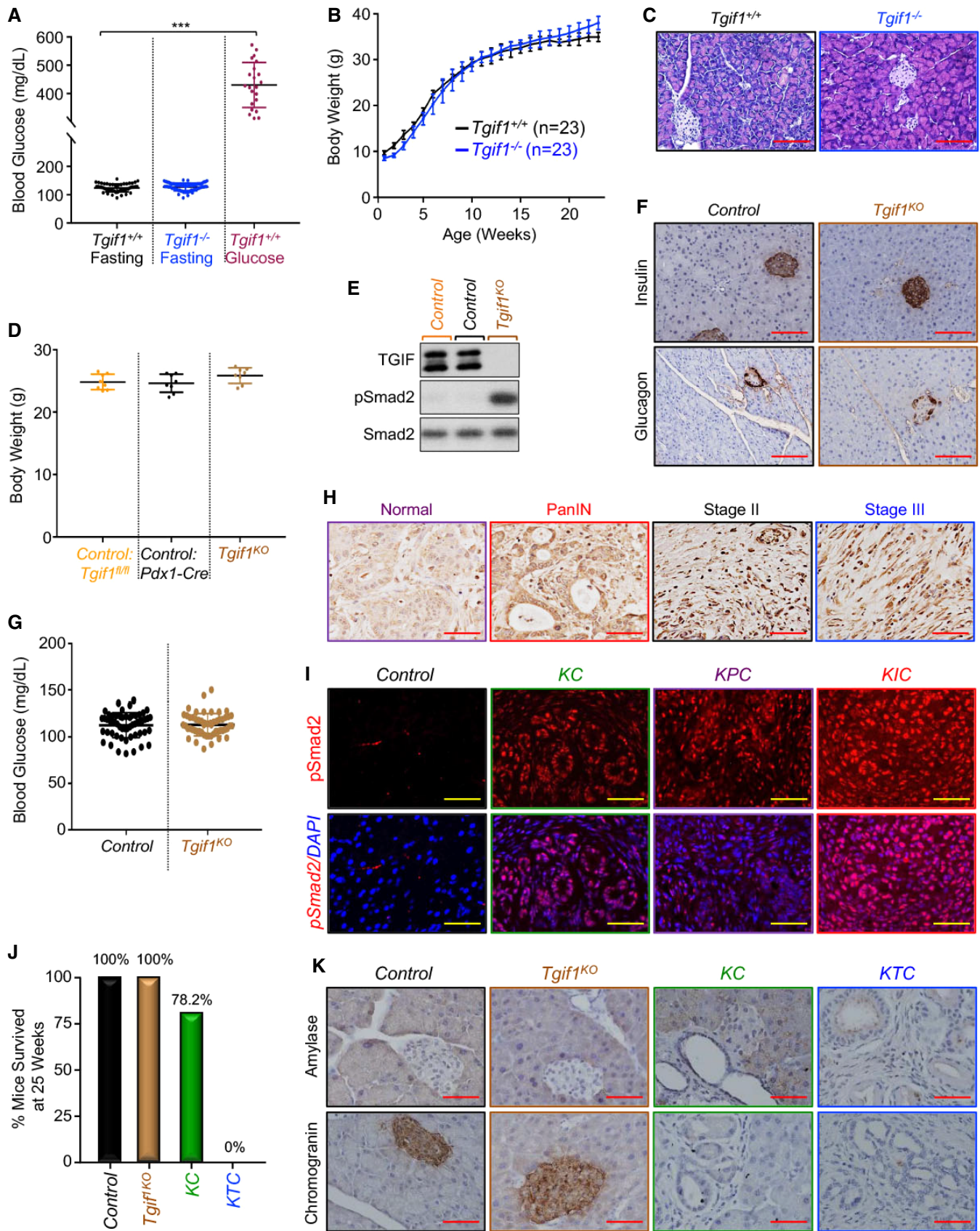


Figure EV1.