

Supplemental Table 1. General characteristics at follow-up stratified for unisex sarcopenia classification

	Parameter	Follow Up		p
		no sarcopenia	sarcopenia	
Scores	MELD	12(6-40)	15(6-40)	0.037
	MELD-Na	13(6-40)	16(6-40)	0.013
	Child-Pugh	6(5-13)	8(5-13)	0.004
	CLIF-C-AD	45.4(26.8-100.8)	52.1(29.3-85.0)	<0.001
Laboratory	Sodium	139(126-146)	138(122-163)	0.087
	Creatinine	1.0(0.2-5.85)	1.0(0.4-10.0)	0.672
	Bilirubin	1.8(0.2-31.8)	2.2(0.3-33.9)	0.216
	gGT	87(15-3685)	143(22-667)	0.063
	AST	40.5(10-37186)	52(13-6174)	0.125
	ALT	29(2-6030)	33(7-1086)	0.781
	Albumin	33.1(2.0-47.9)	29.5(3.8-48.0)	0.064
	INR	1.2(0.9-5.7)	1.3(0.9-3.9)	0.009
	WBC G/l	5.8(2.5-22.1)	8.2(0.5-272)	0.002
	Hb [mg/dl]	11.4(6.4-24.0)	10.7(5.8-16.5)	0.008
	Platelets	133(10-430)	118(2-399)	0.399

Supplemental Table 2. Diagnostic parameters of general TPMT/height and gender-specific classification for 1-year mortality and development of ACLF at 1-year follow-up

diagnostic parameter		c-index	Sensitivity [%]	Specificity [%]	Positive predictive value [%]	Negative predictive value [%]	Diagnostic accuracy [%]
1y-mortality	Unisex classification	0.646	73	56	85	37	69
	Gender-specific classification	0.680	80	56	87	44	75
1y-ACLF	Unisex classification	0.660	73	58	86	38	70
	Gender-specific classification	0.726	82	63	89	50	78

Supplemental Table 3. Uni- and multivariate Cox regression analysis for development of fatal ACLF at 1-year follow-up

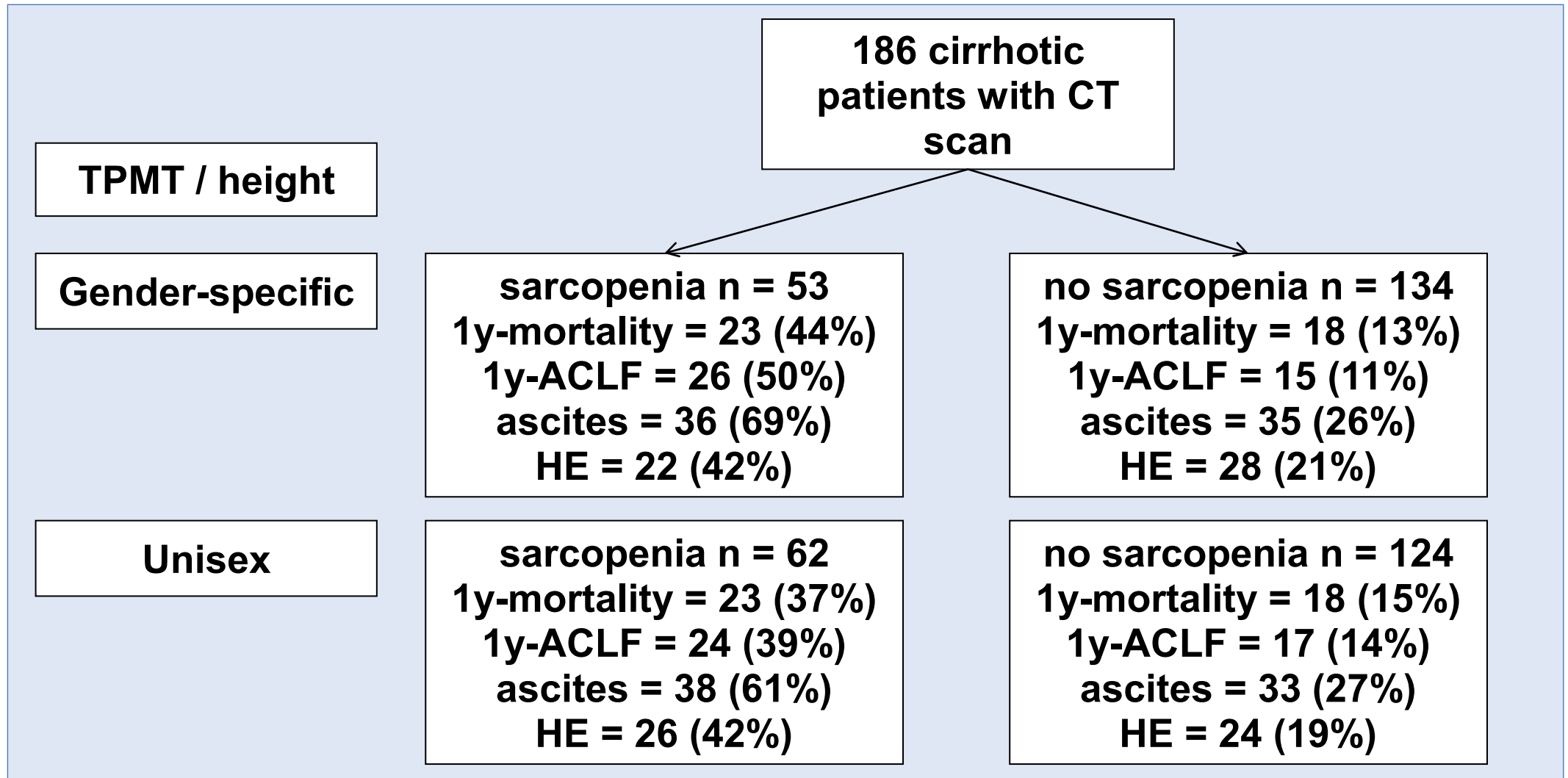
1-year fatal ACLF Parameter	univariate Cox regression				multivariate Cox regression			
	p	HR	CI		p	HR	CI	
age [years]	0.028	1.034	1.004	1.066				
gender	0.218							
TPMT / height [mm/m]	0.000	0.808	0.741	0.881	<0.001	0.849	0.781	0.924
unisex classification	<0.001	3.707	1.883	7.300				
gender-specific classification	<0.001	6.321	3.138	12.732	<0.001	1.105	1.058	1.153
hepatic encephalopathy at baseline	0.075							
ascites at baseline	0.063							
Child-Pugh at baseline	0.003	1.350	1.108	1.645				
MELD at baseline	<0.001	1.114	1.063	1.168				
MELD-Na at baseline	<0.001	1.110	1.059	1.163				
CLIF-C-AD at baseline	<0.001	1.111	1.069	1.155	<0.001	1.097	1.053	1.144
sodium at baseline [mmol/l]	0.165							
creatinine at baseline [mg/dl]	0.008	1.350	1.083	1.683				
bilirubin at baseline [mg/dl]	0.003	1.149	1.048	1.259				
INR at baseline	0.023	5.225	1.253	21.791				

Supplemental Table 4. Uni- and multivariate Cox regression analysis for development of non-fatal ACLF at 2-year follow-up

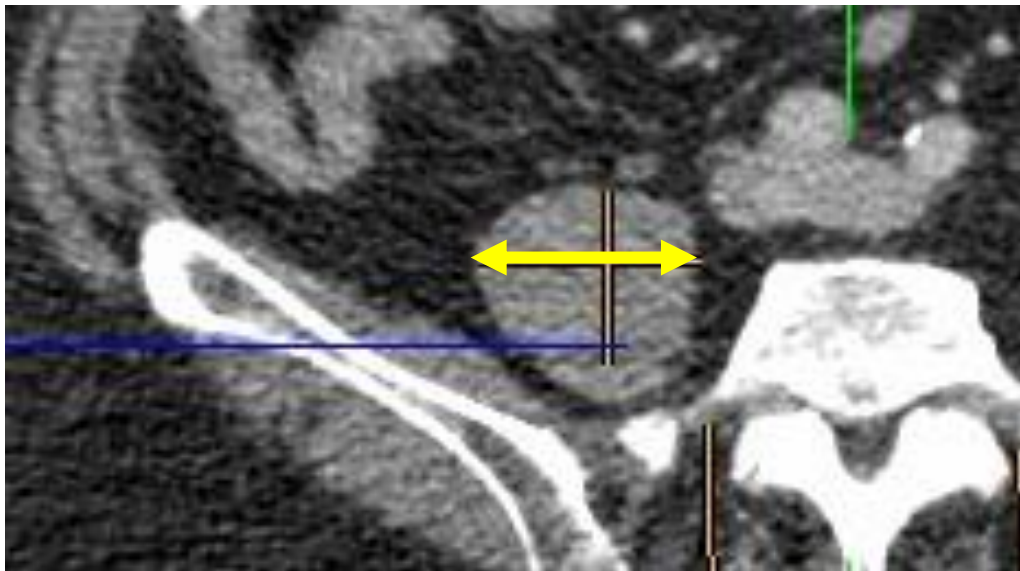
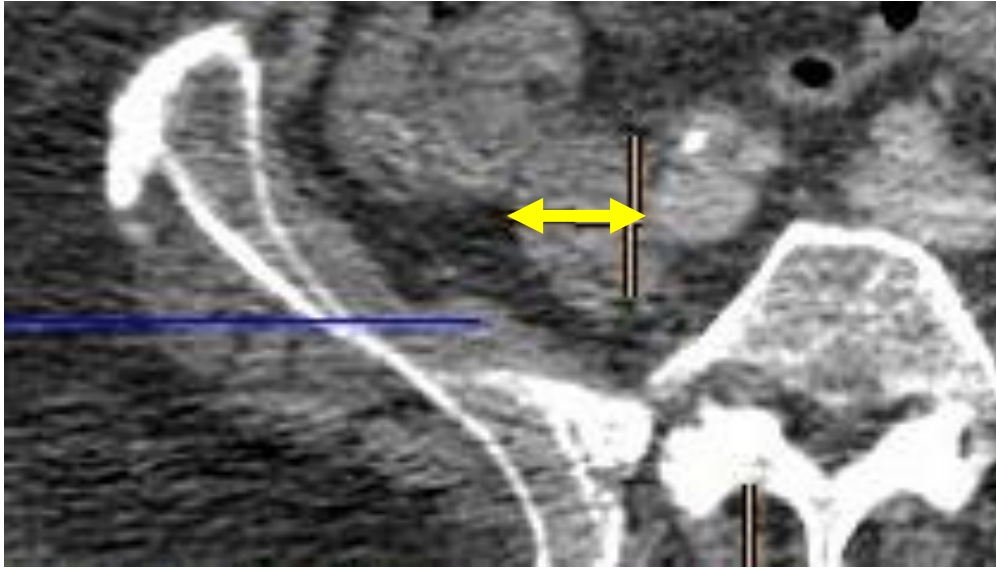
2-year non-fatal ACLF Parameter	univariate Cox regression			multivariate Cox regression		
	p	HR	CI	p	HR	CI
age [years]	0.009	1.087	1.021 1.157	0.020	1.078	1.012 1.149
gender	0.774					
TPMT / height [mm/m]	0.002	0.768	0.650 0.906	0.006	0.754	0.618 0.921
unisex classification	0.064					
gender-specific classification	0.014	4.821	1.383 16.807	0.031	3.998	1.132 14.120
hepatic encephalopathy at baseline	0.413					
ascites at baseline	0.588					
Child-Pugh at baseline	0.616					
MELD at baseline	0.721					
MELD-Na at baseline	0.904					
CLIF-C-AD at baseline	0.487					
sodium at baseline [mmol/l]	0.792					
creatinine at baseline [mg/dl]	0.856					
bilirubin at baseline [mg/dl]	0.684					
INR at baseline	0.498					

Supplemental figure 1.

a)

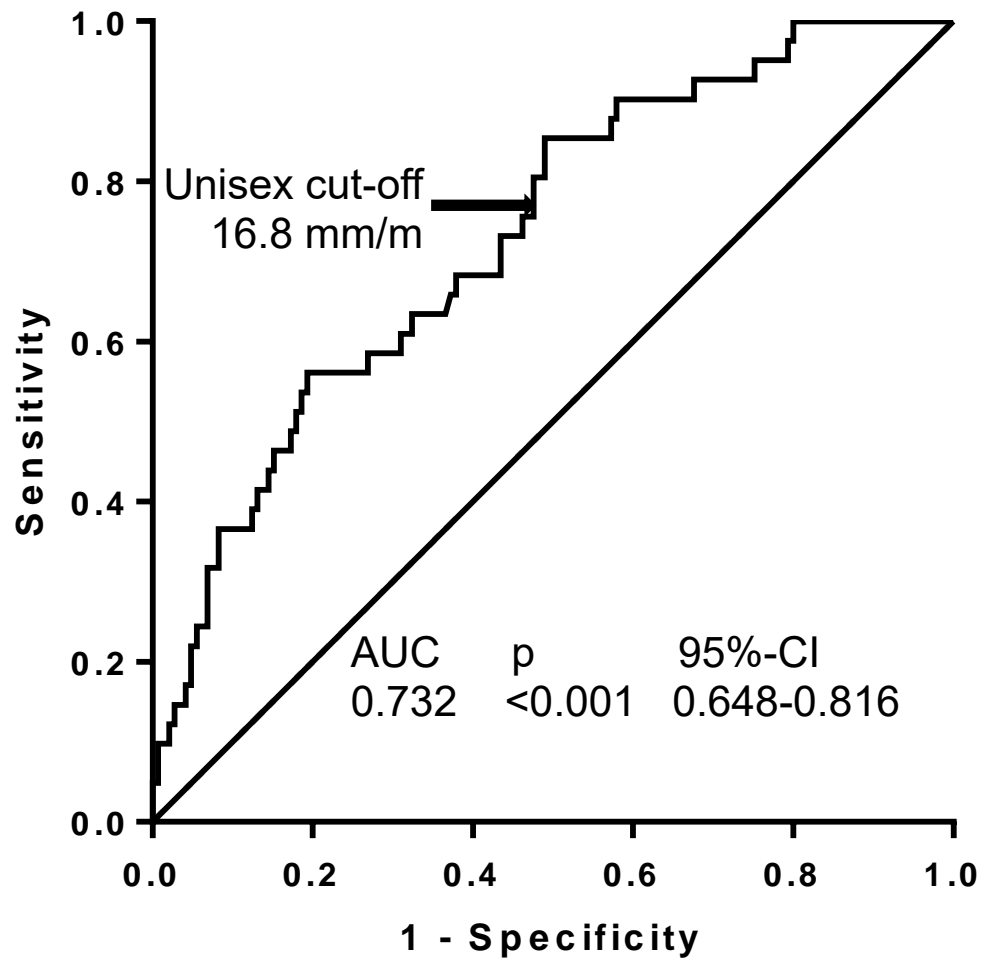


b)



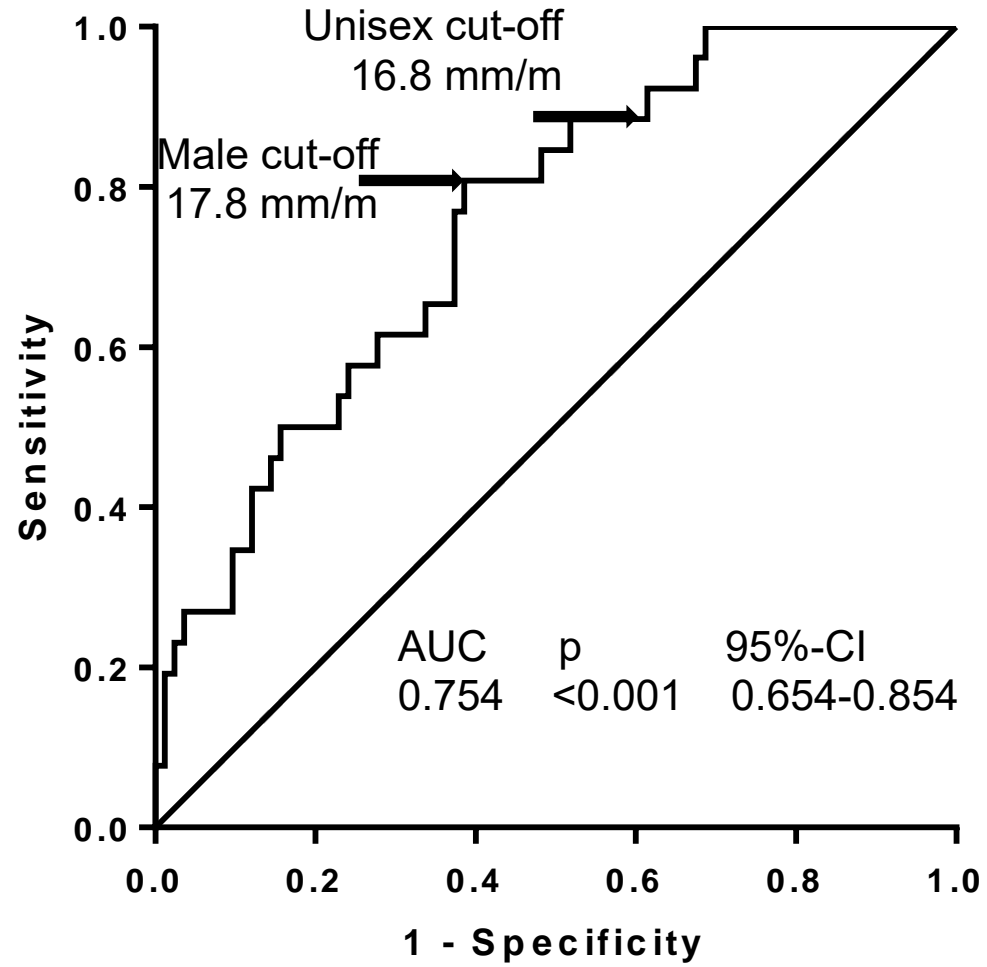
c)

ROC analysis of TPMT/height for 1-year survival



d)

ROC analysis of TPMT/height for 1-year survival for male



e)

ROC analysis of TPMT/height for 1-year survival for female

