



Supporting Information

for

Insertion of [1.1.1]propellane into aromatic disulfides

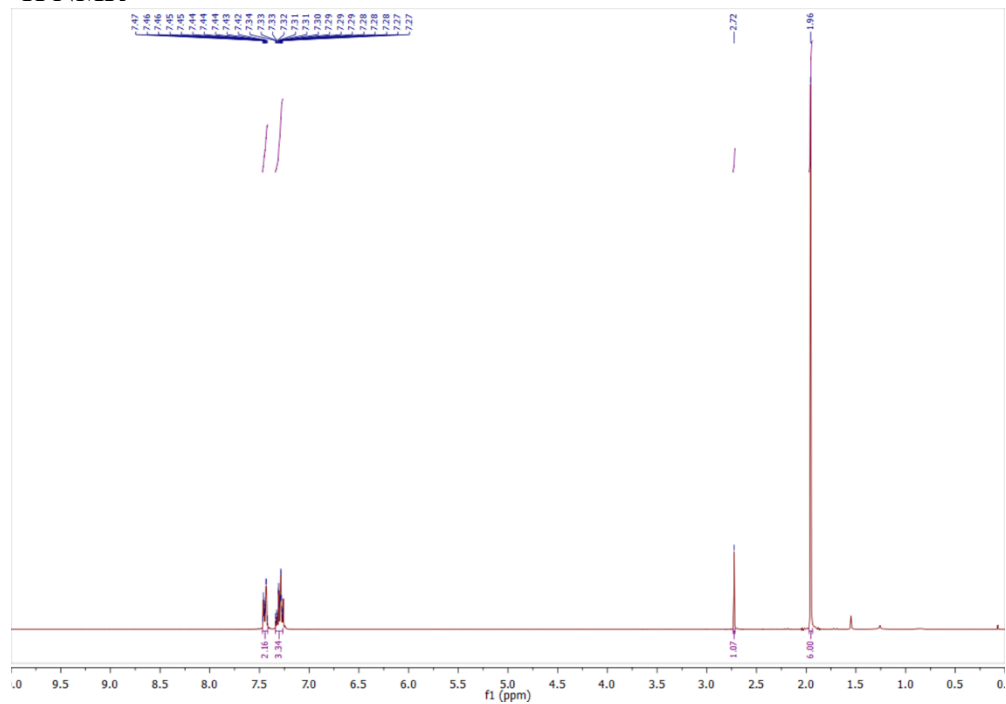
Robin M. Bär, Gregor Heinrich, Martin Nieger, Olaf Fuhr and Stefan Bräse

Beilstein J. Org. Chem. **2019**, *15*, 1172–1180. [doi:10.3762/bjoc.15.114](https://doi.org/10.3762/bjoc.15.114)

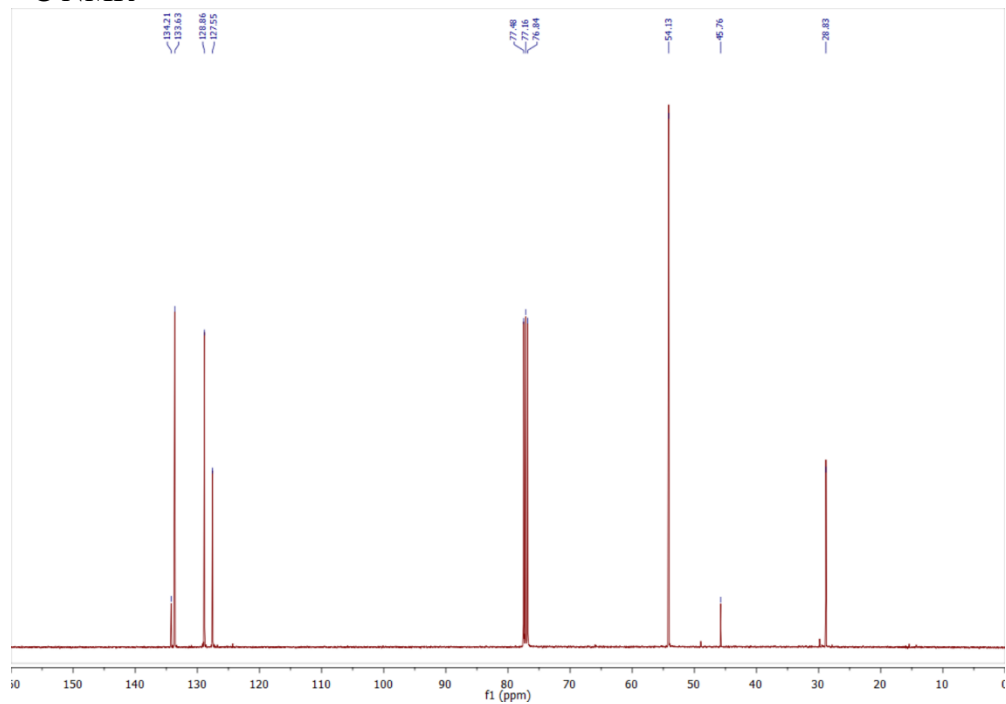
Spectra

[5a] 3-Phenylsulfanylbicyclo[1.1.1]pentane

¹H NMR

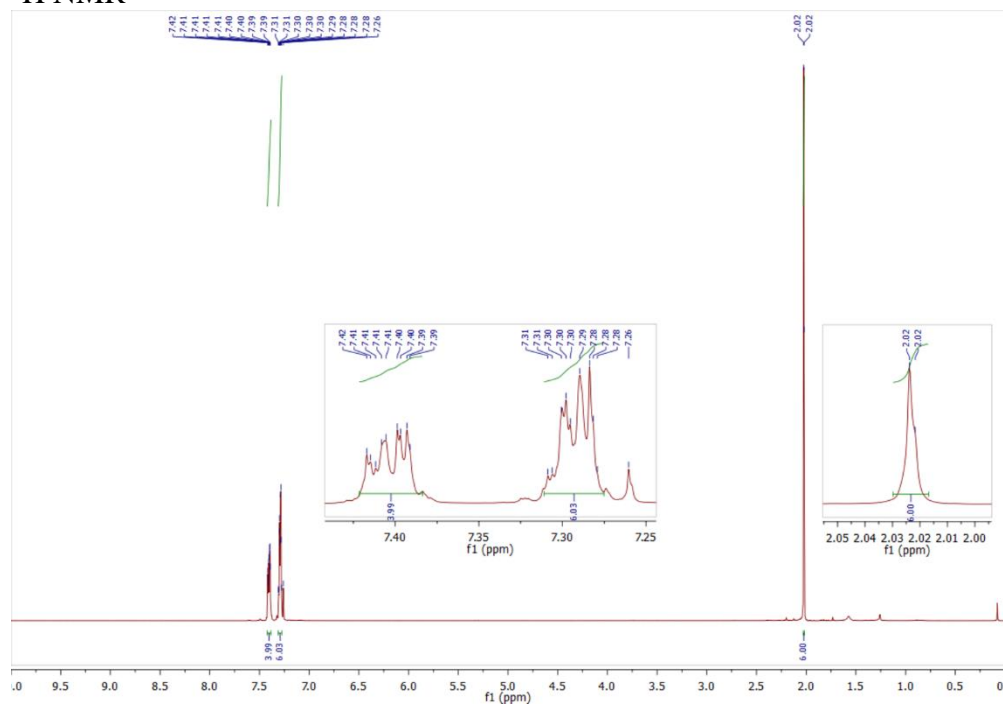


¹³C NMR

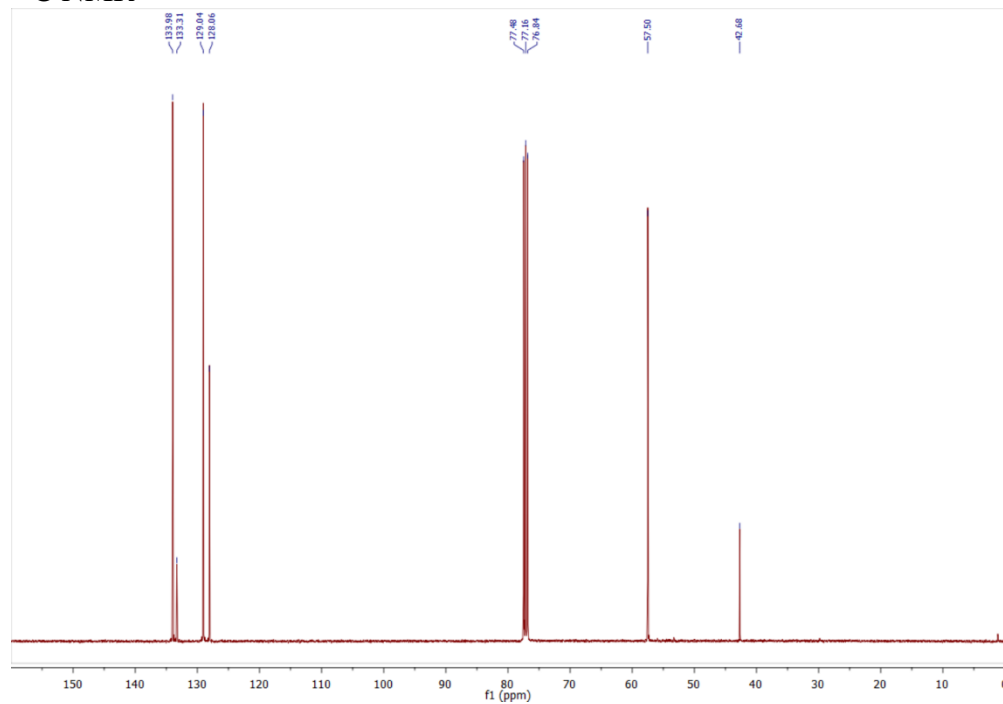


[6a] 1,3-Bis(phenylthio)bicyclo[1.1.1]pentane

¹H NMR

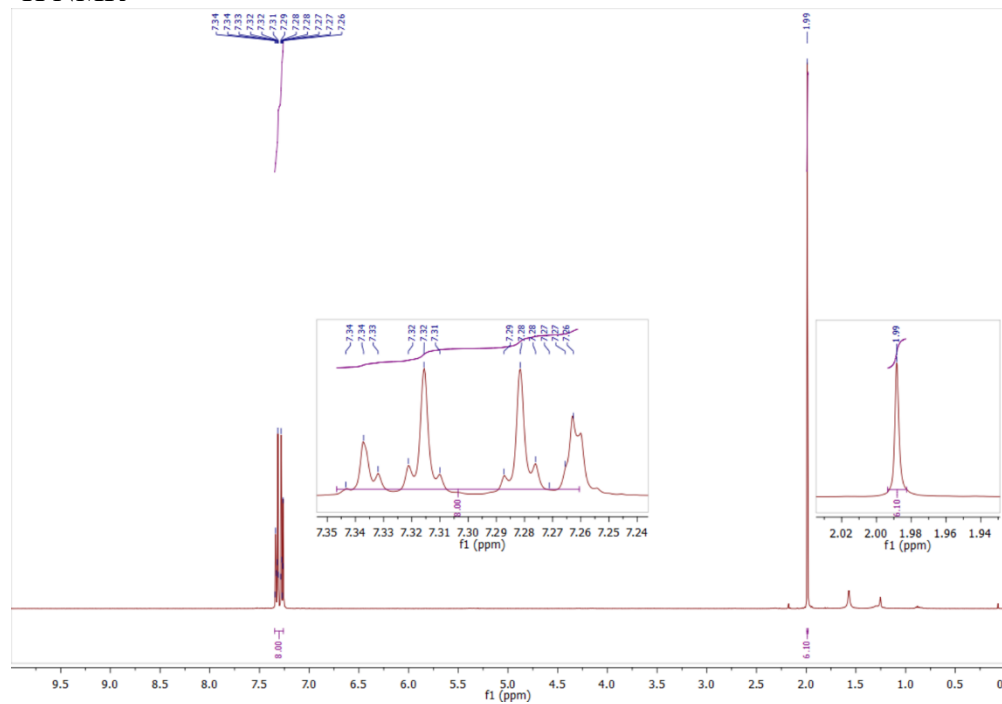


¹³C NMR

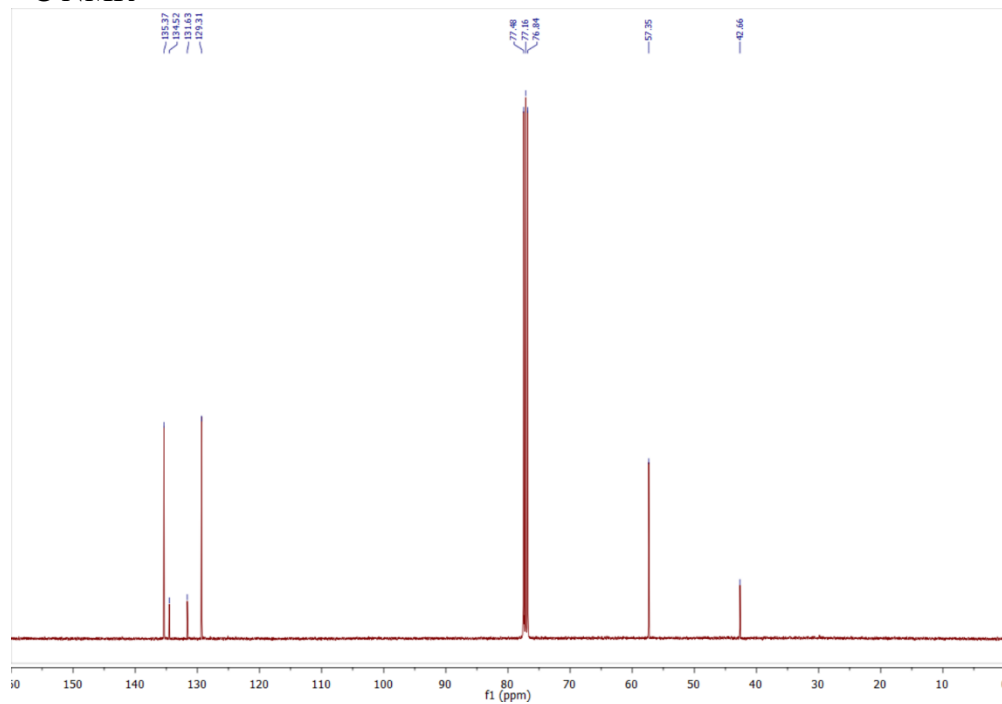


[6b] 1,3-Bis((4-chlorophenyl)thio)bicyclo[1.1.1]pentane

¹H NMR

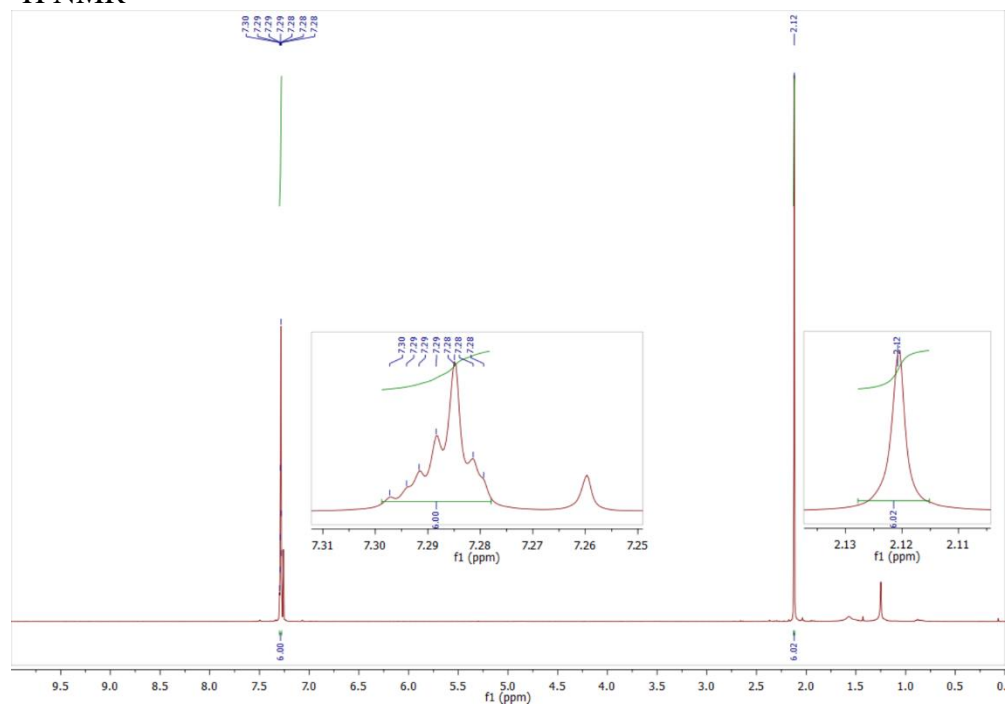


¹³C NMR

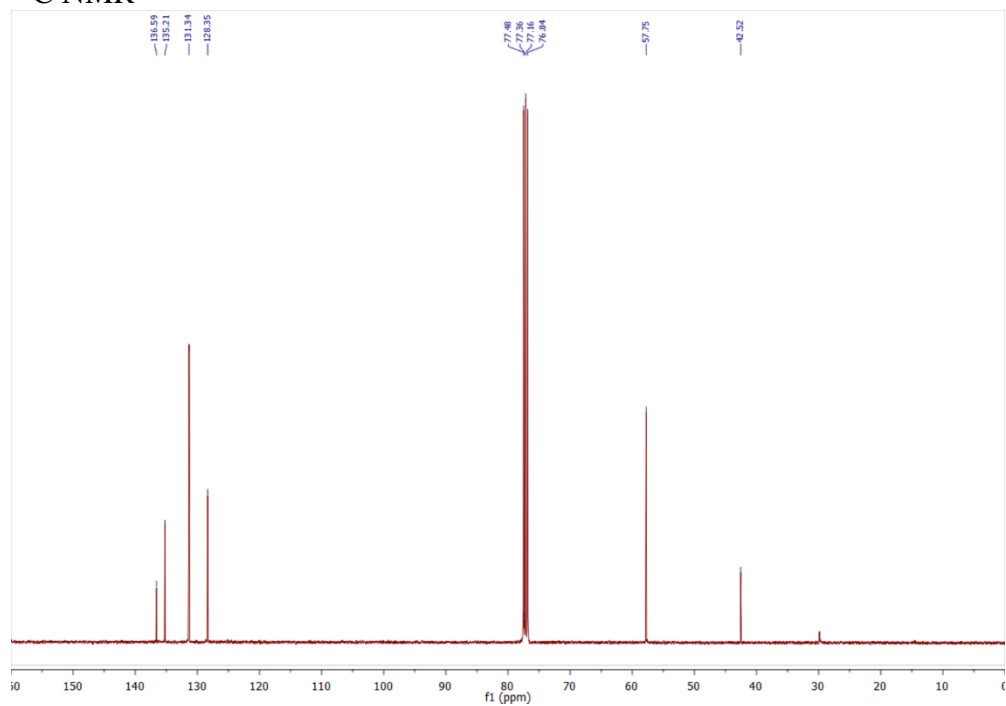


[6c] 1,3-Bis((3,5-dichlorophenyl)thio)bicyclo[1.1.1]pentane

¹H NMR

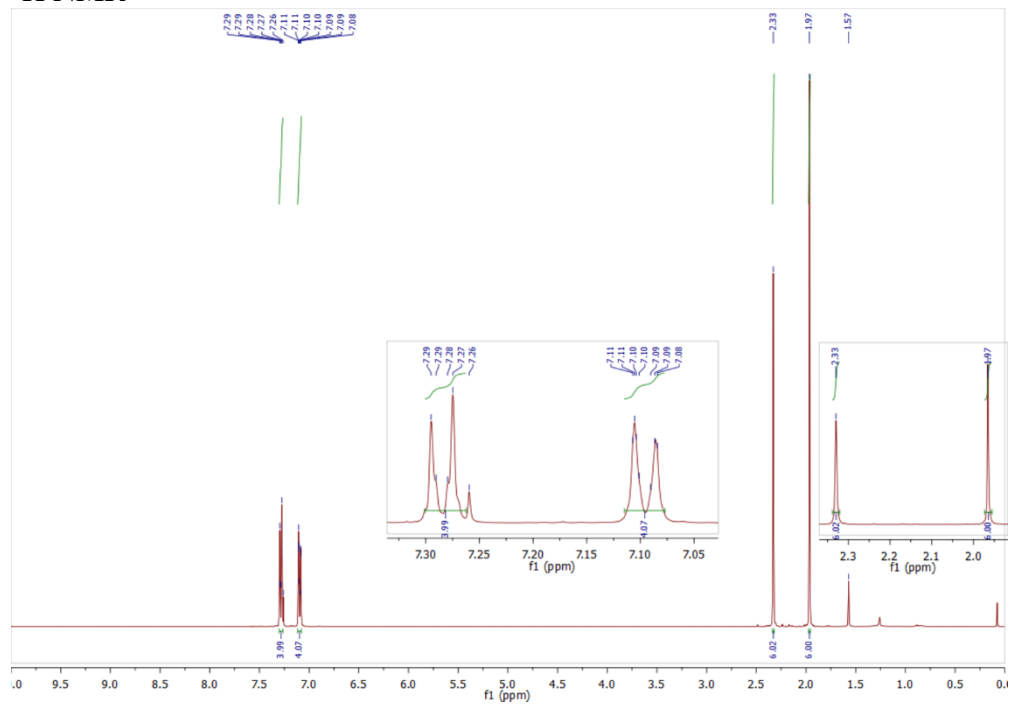


¹³C NMR

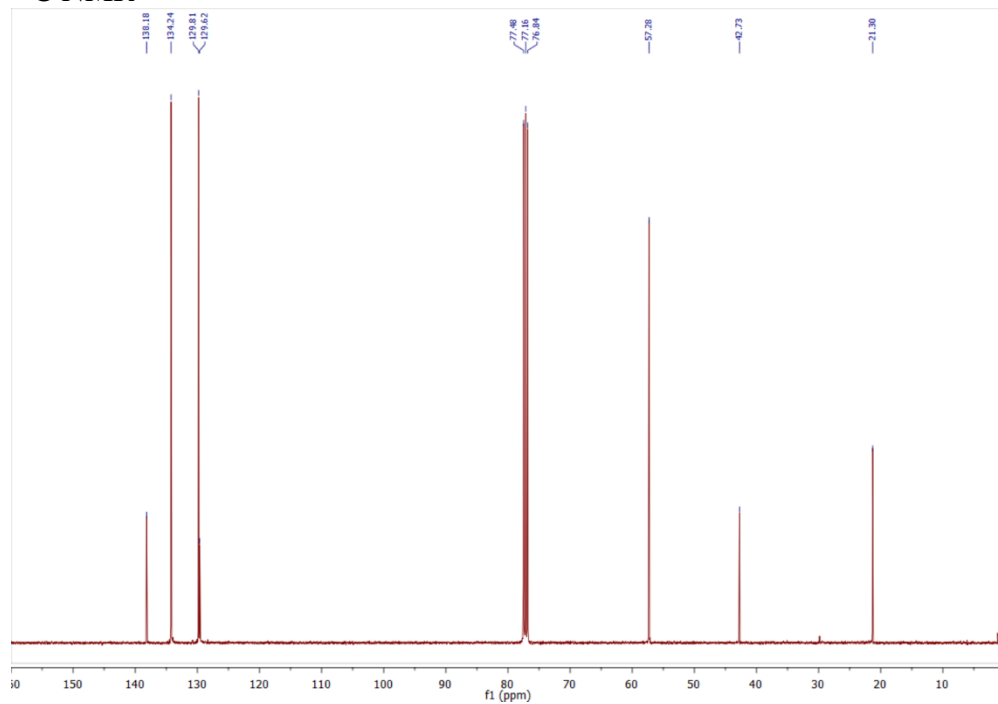


[6d] 1,3-Bis(*p*-tolylthio)bicyclo[1.1.1]pentane

¹H NMR

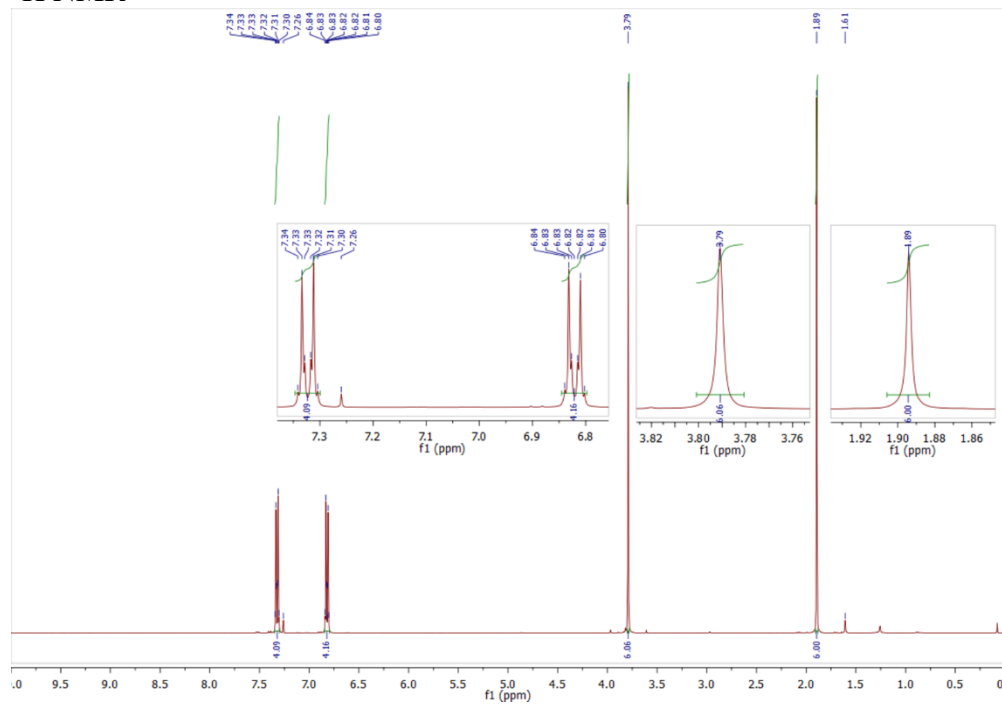


¹³C NMR

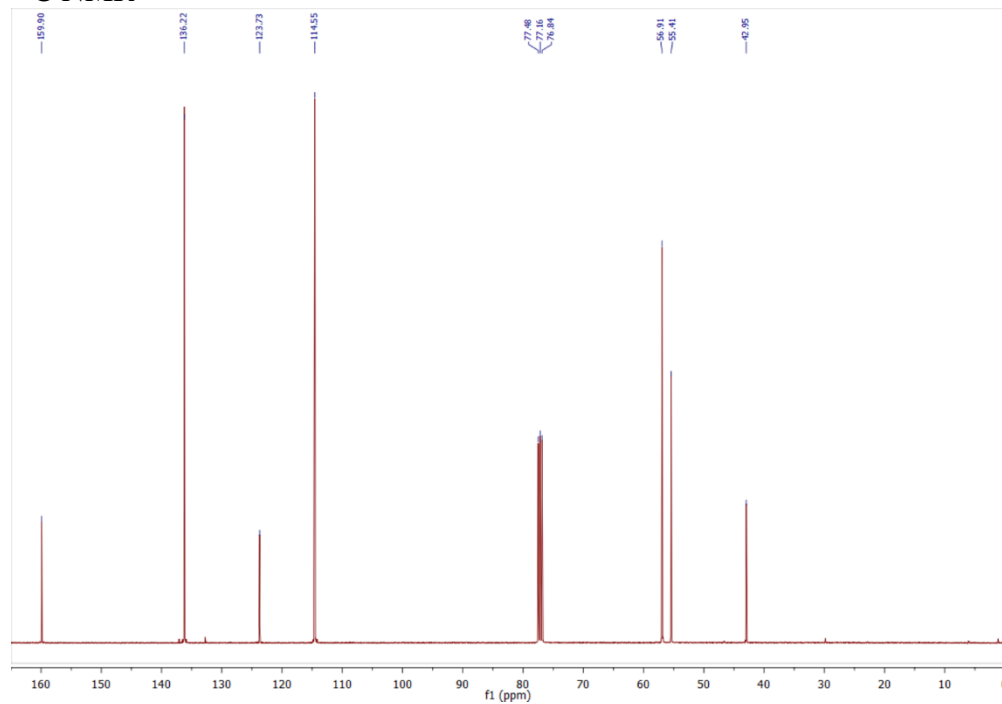


[6e] 1,3-Bis((4-methoxyphenyl)thio)bicyclo[1.1.1]pentane

¹H NMR

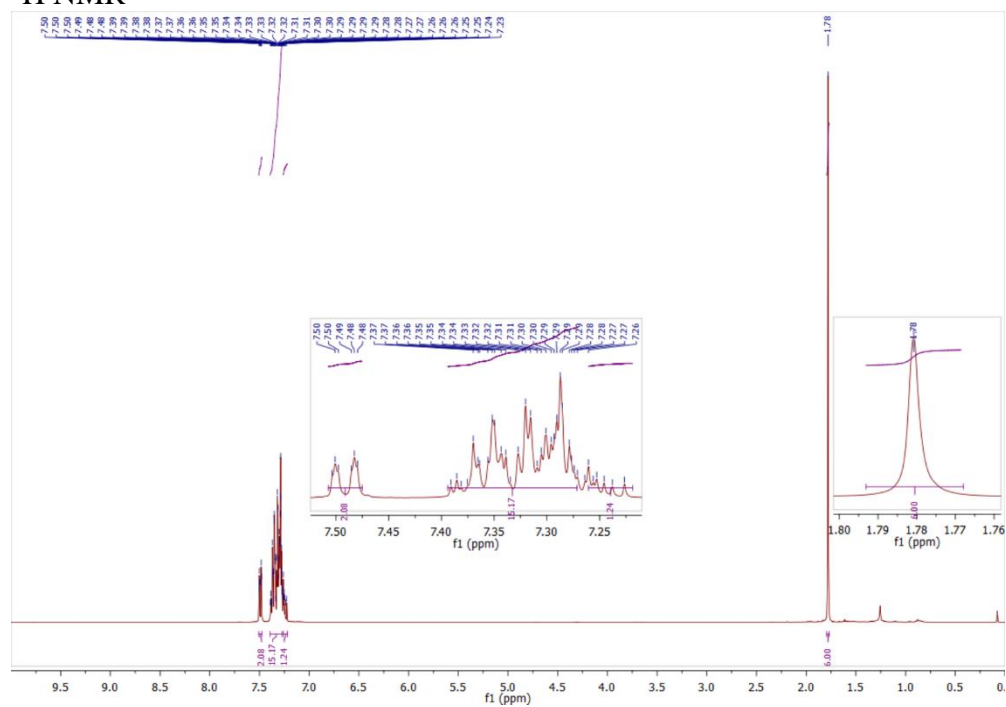


¹³C NMR

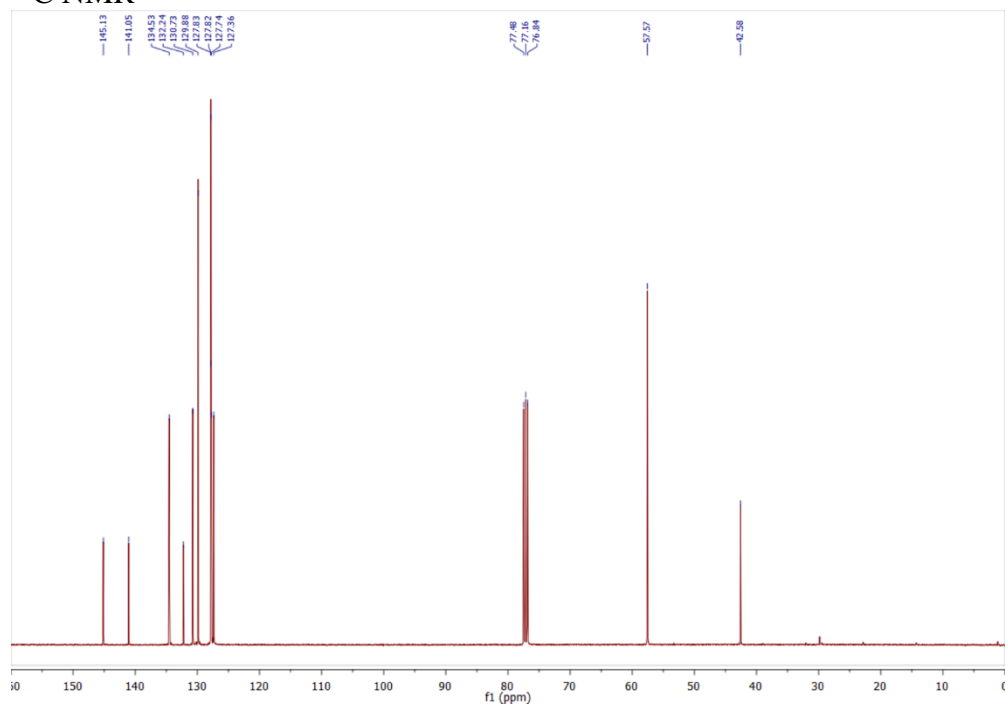


[6f] 1,3-Bis([1,1'-biphenyl]-2-ylthio)bicyclo[1.1.1]pentane

¹H NMR

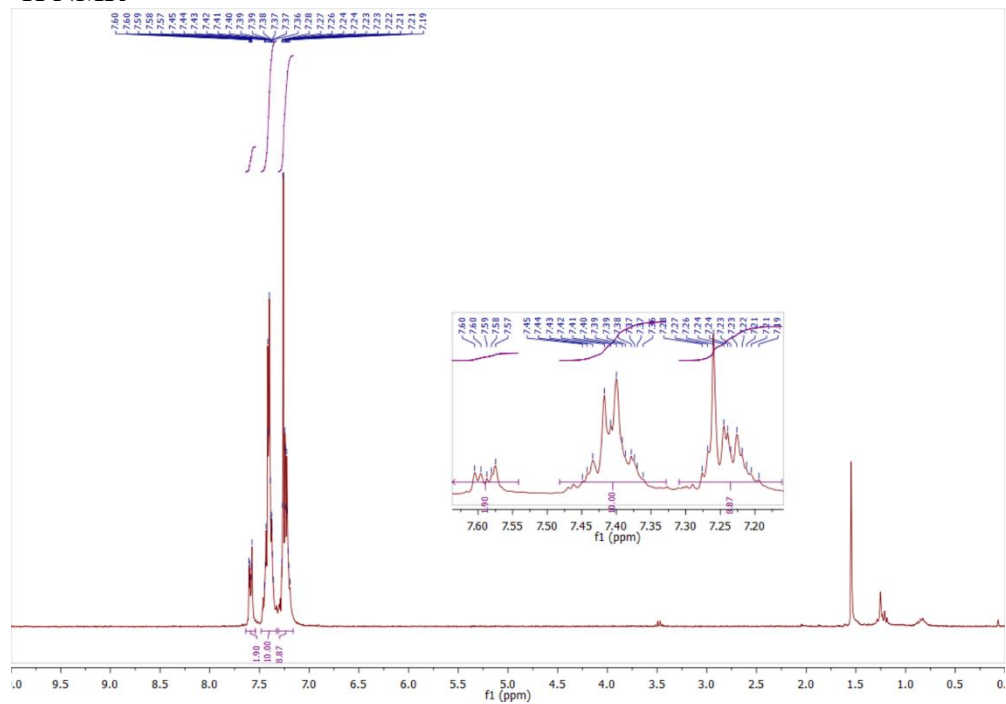


¹³C NMR

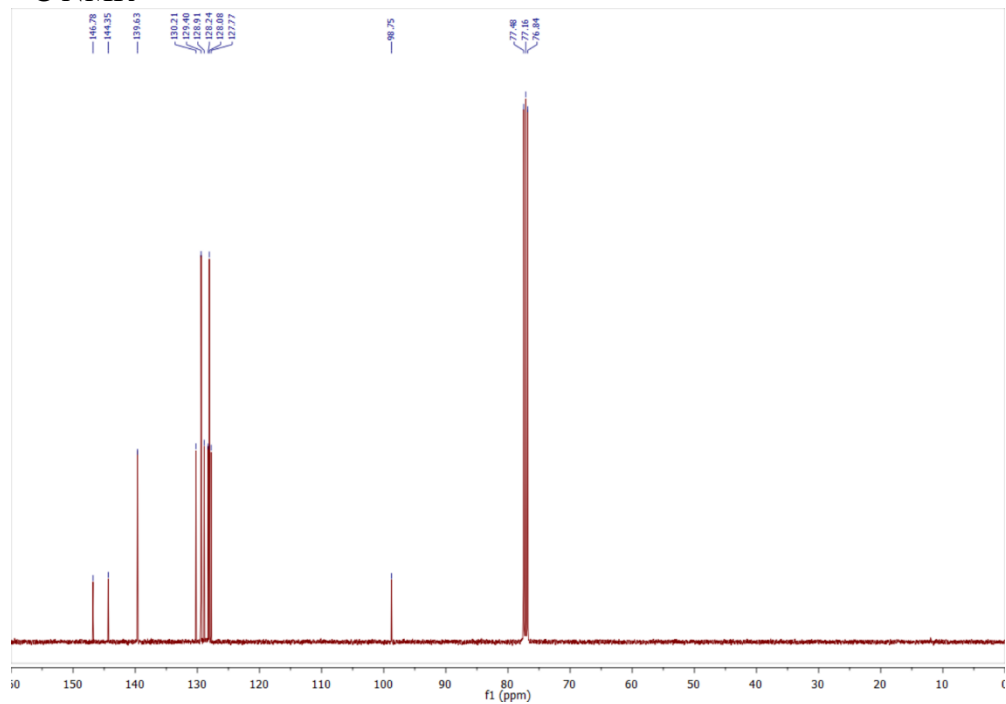


[10f] 1-Phenyl-2-[(2-phenylphenyl)disulfanyl]benzene

¹H NMR

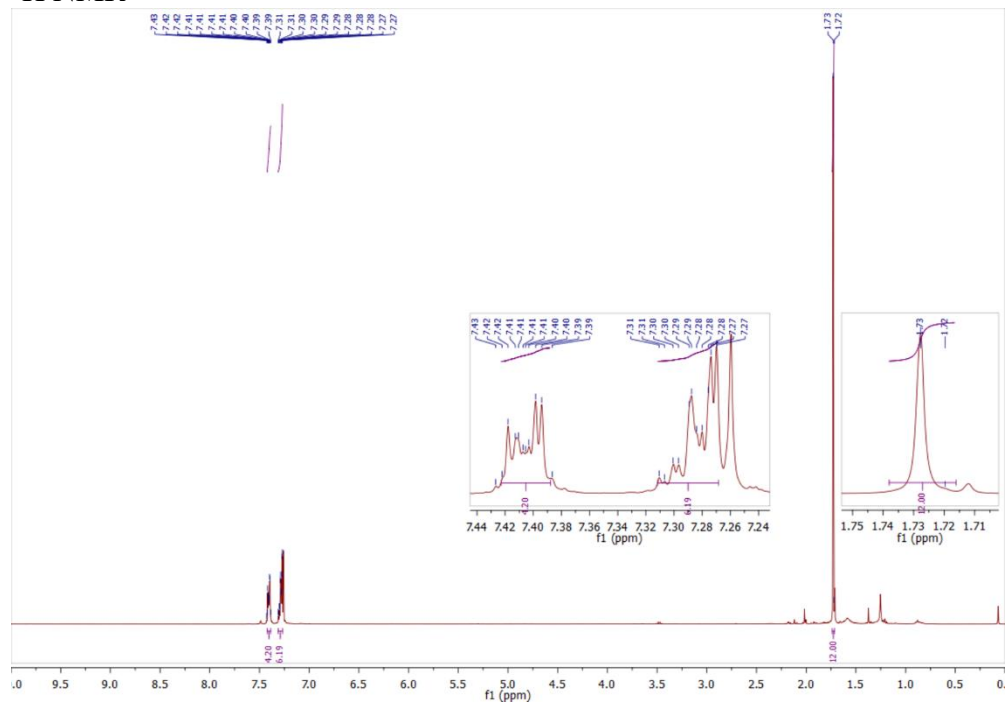


¹³C NMR

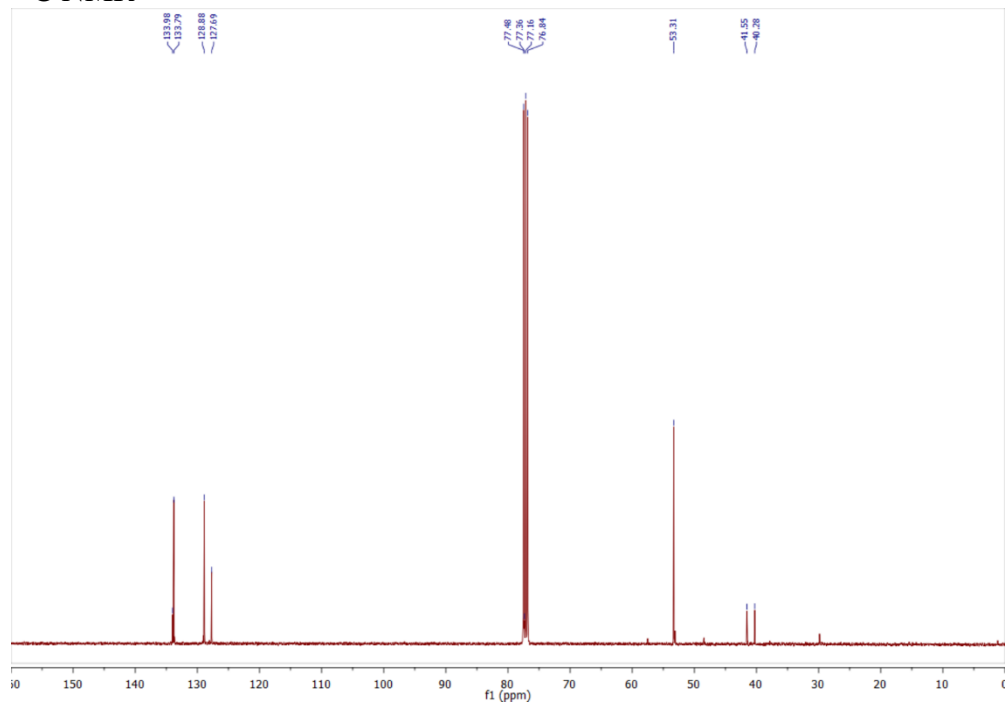


[11a] 3,3'-Bis(phenylthio)-1,1'-bi(bicyclo[1.1.1]pentane)

¹H NMR

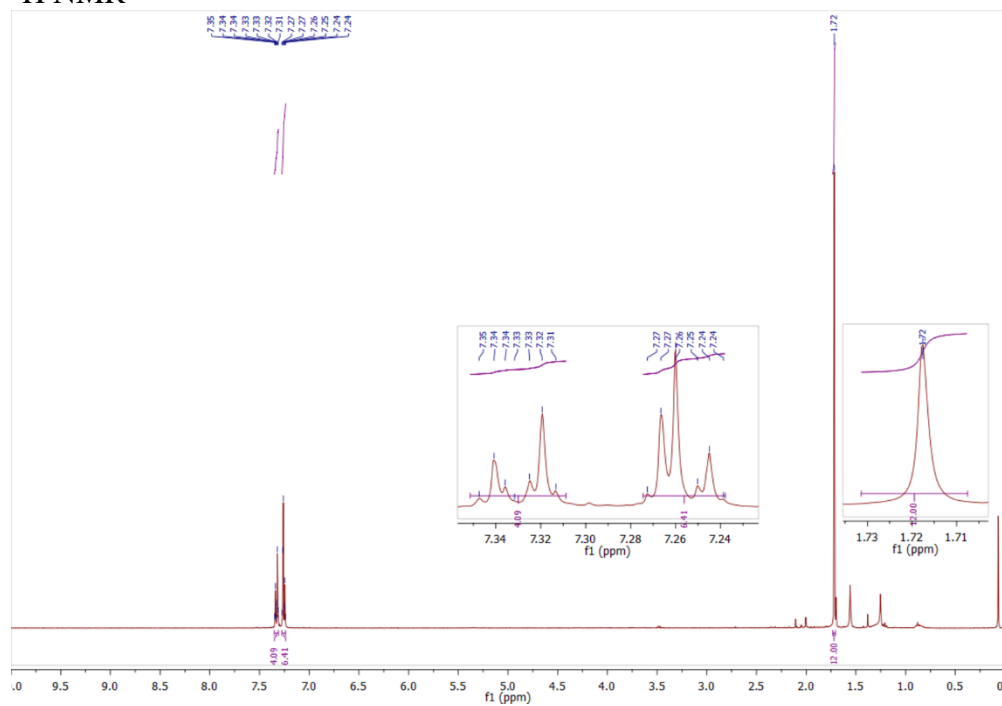


¹³C NMR

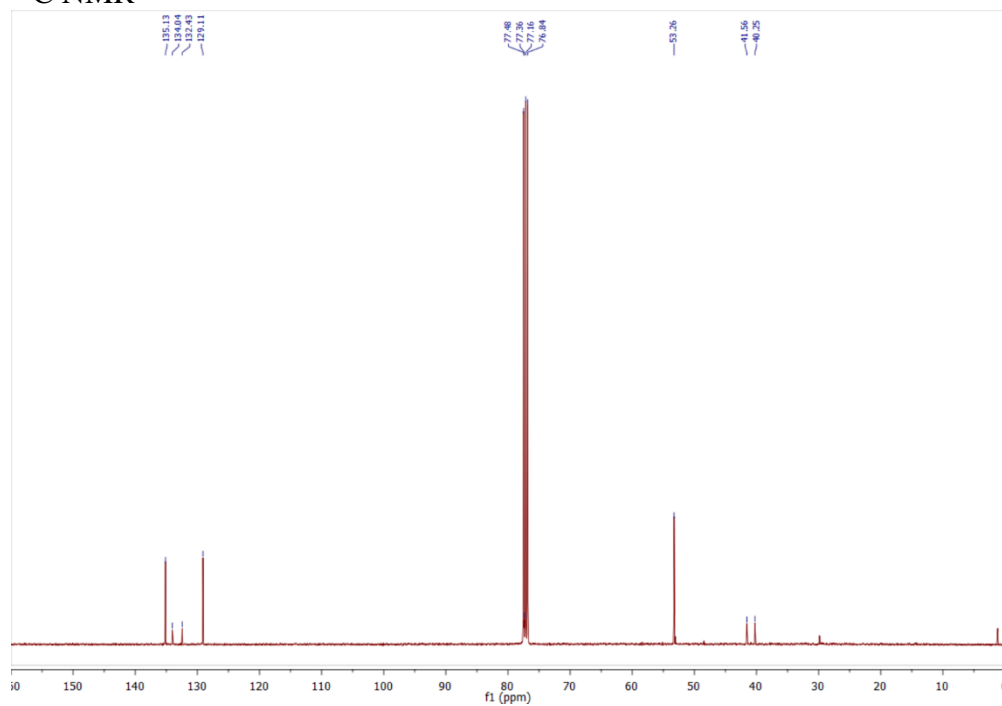


[11b] 3,3'-Bis((4-chlorophenyl)thio)-1,1'-bi(bicyclo[1.1.1]pentane)

¹H NMR

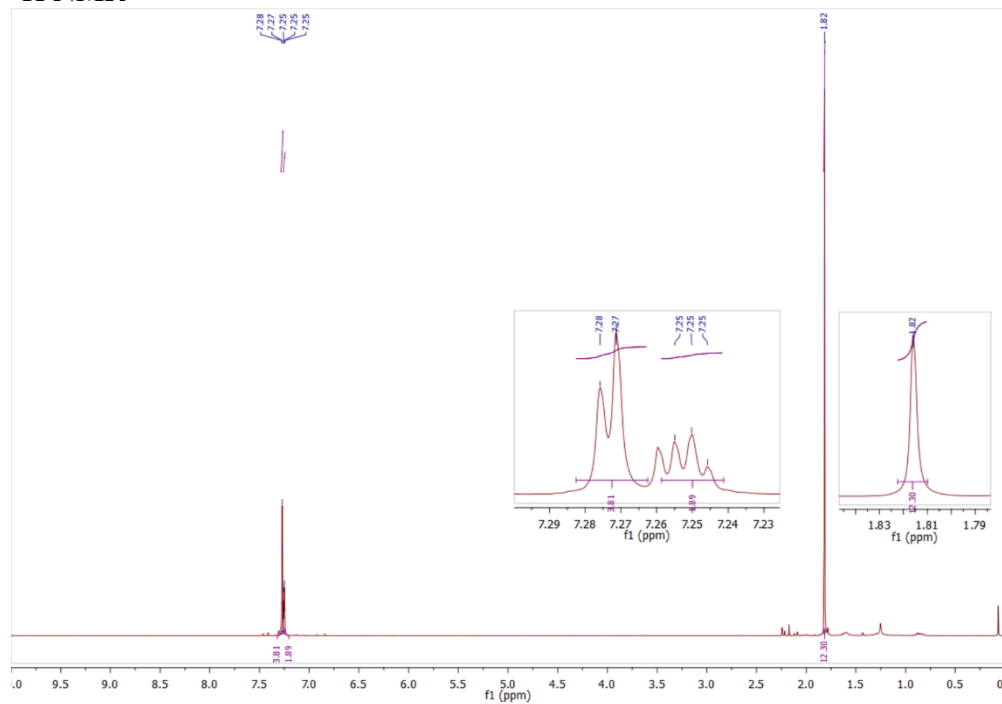


¹³C NMR

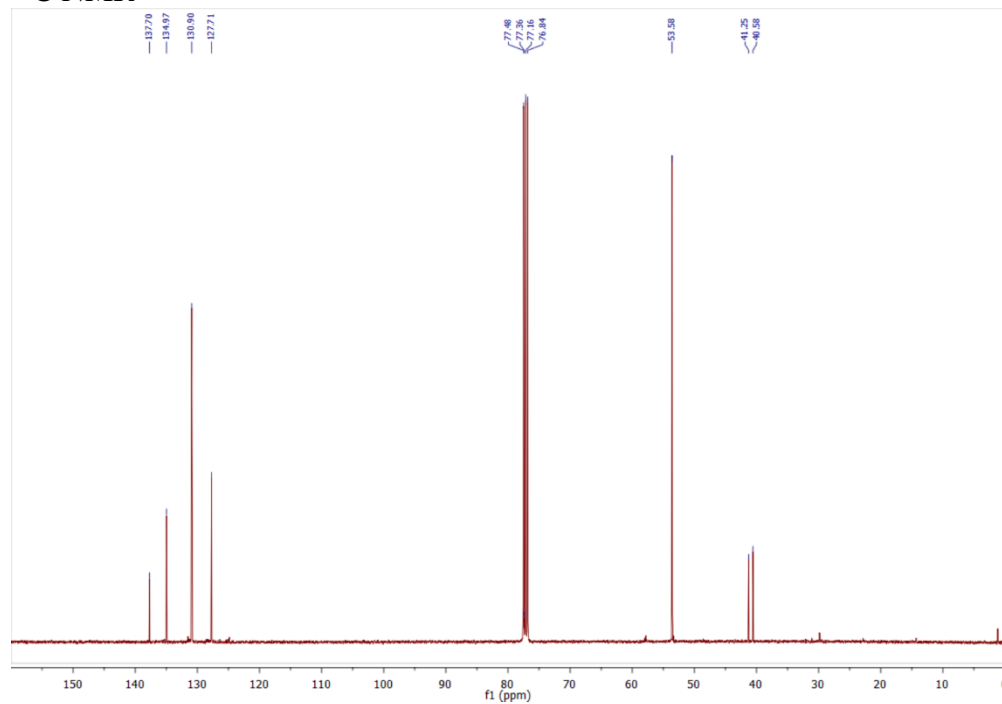


[11c] 3,3'-Bis((3,5-dichlorophenyl)thio)-1,1'-bi(bicyclo[1.1.1]pentane)

¹H NMR

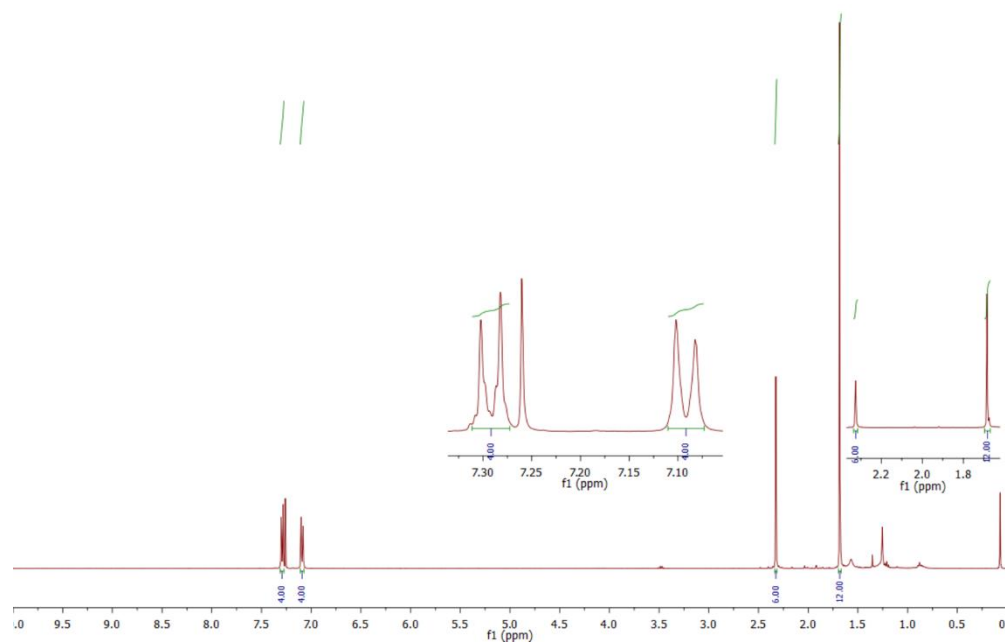


¹³C NMR

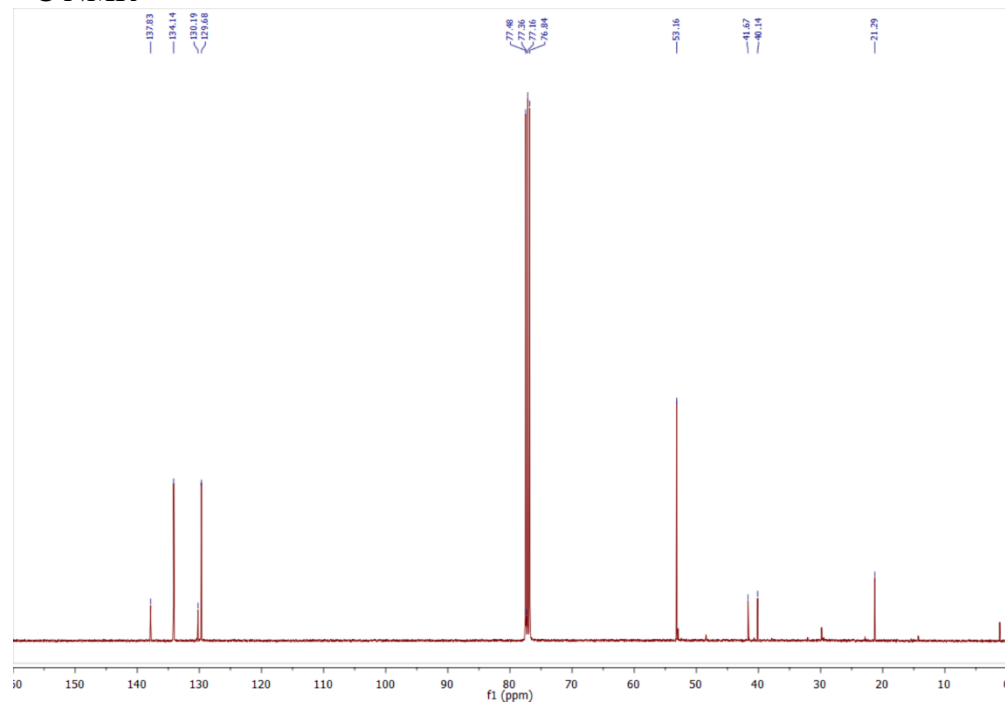


[11d] 3,3'-Bis(*p*-tolylthio)-1,1'-bi(bicyclo[1.1.1]pentane)

¹H NMR

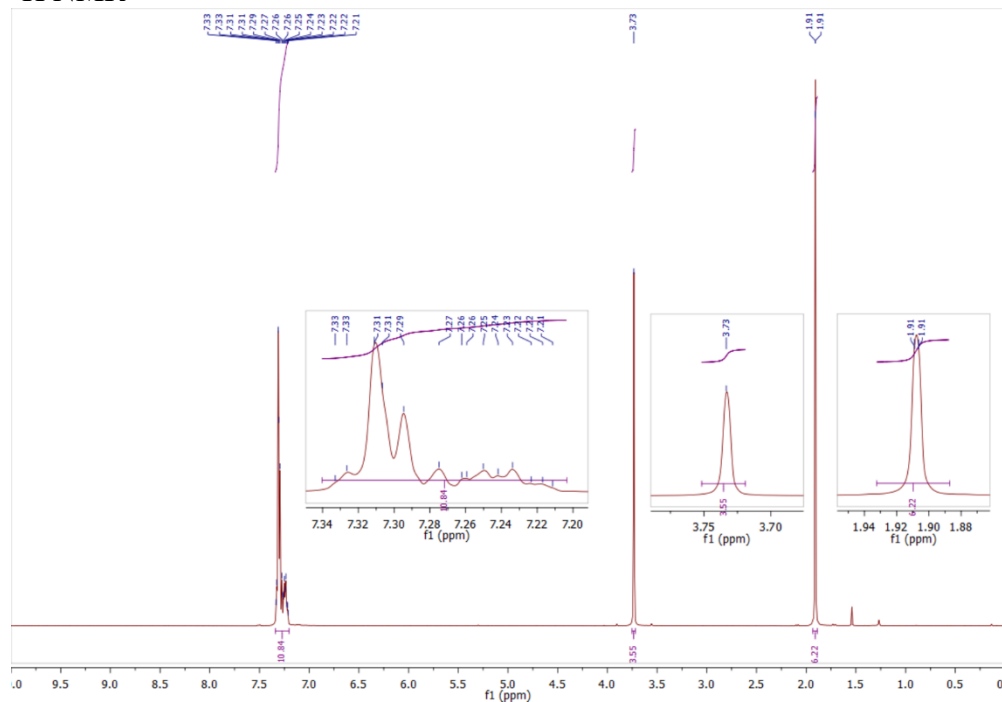


¹³C NMR

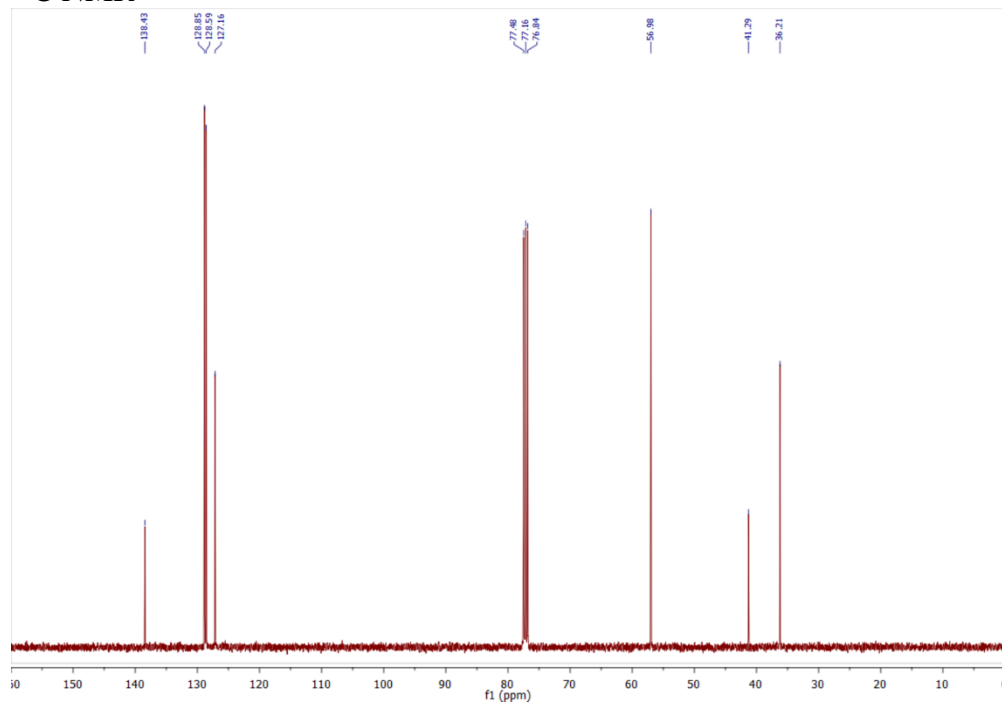


[13] 1,3-Bis(benzylthio)bicyclo[1.1.1]pentane

¹H NMR

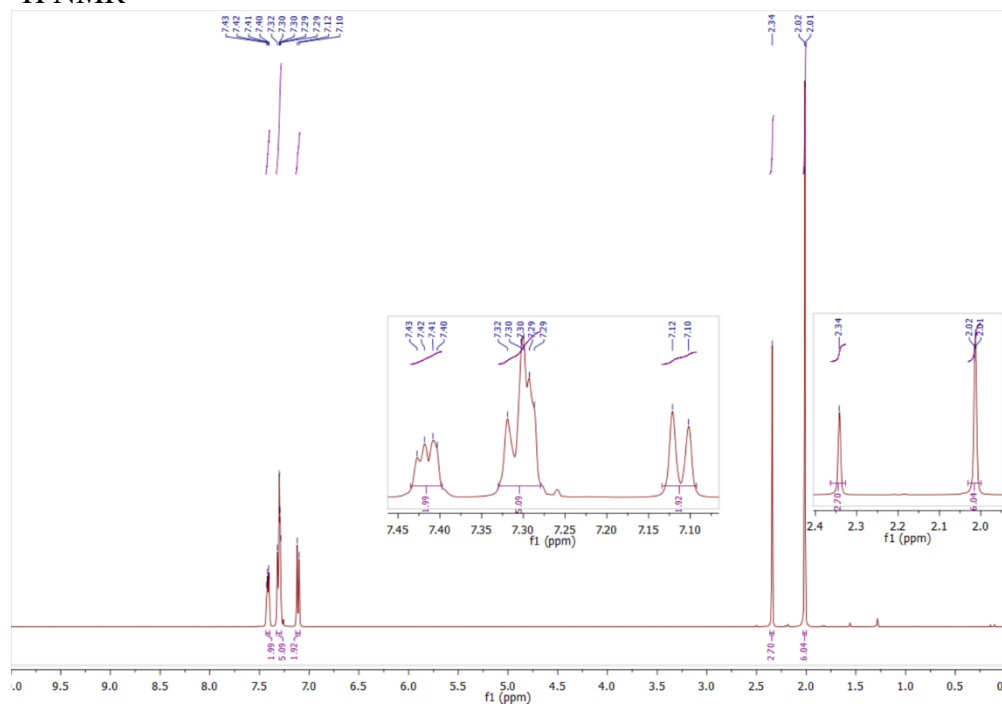


¹³C NMR

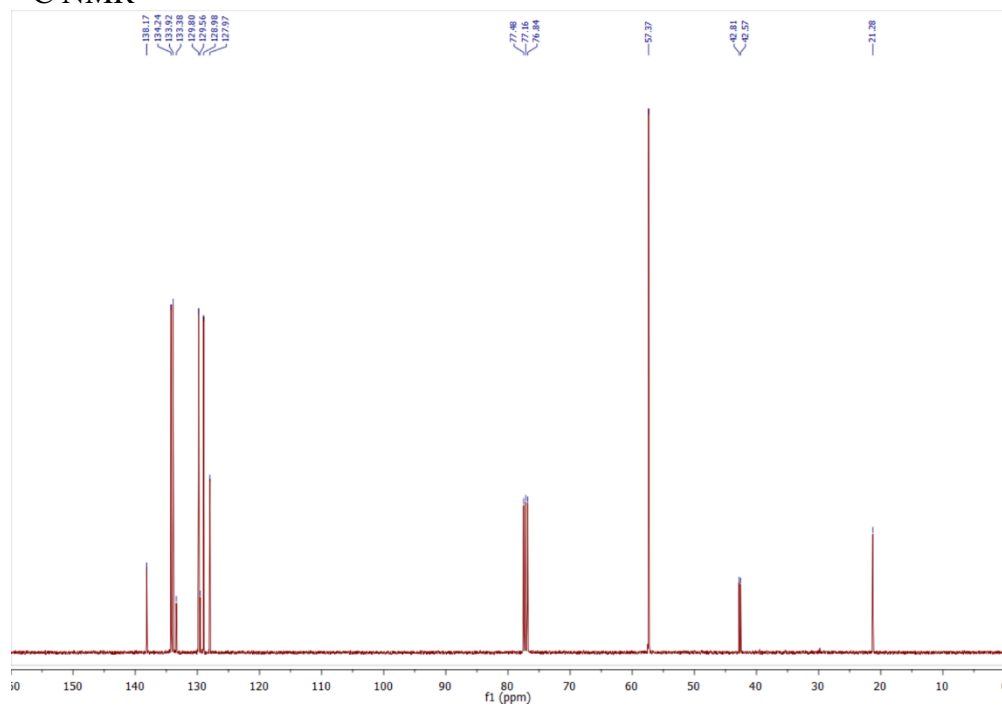


[15] 1-(Phenylthio)-3-(*p*-phenylthio)bicyclo[1.1.1]pentane

¹H NMR

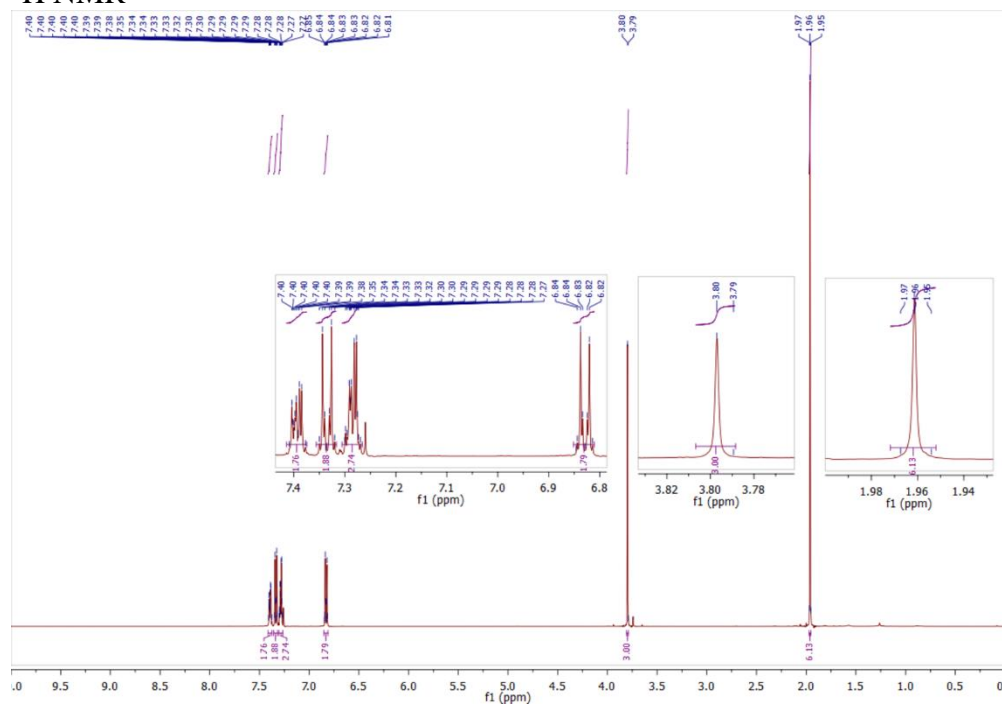


¹³C NMR

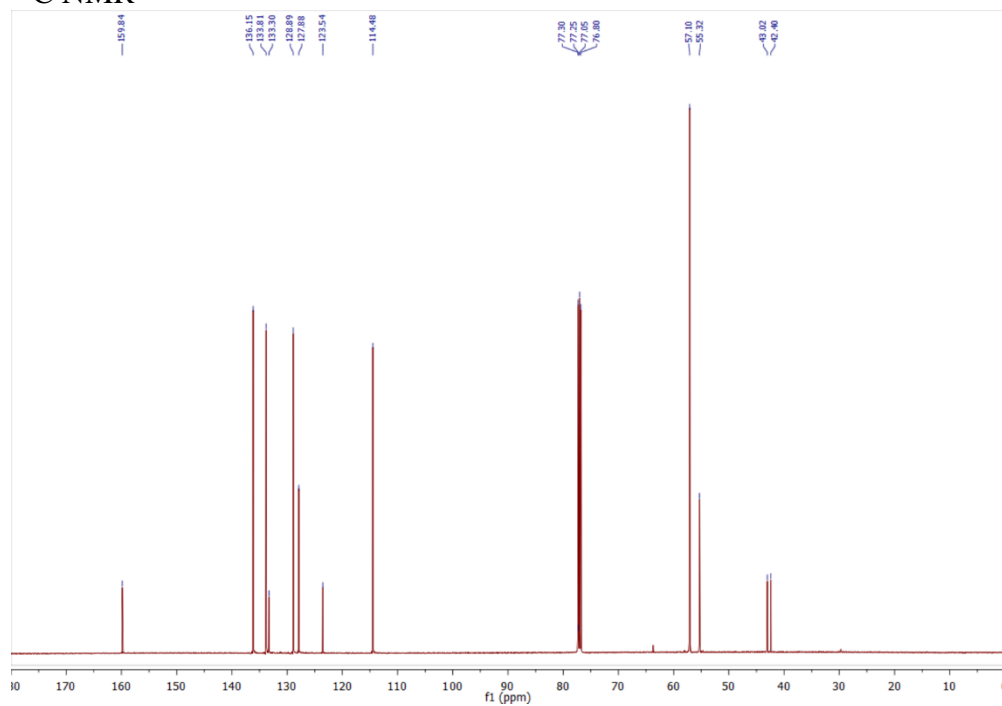


[16] 1-(Phenylthio)-3-(4-methoxyphenylthio)bicyclo[1.1.1]pentane

¹H NMR

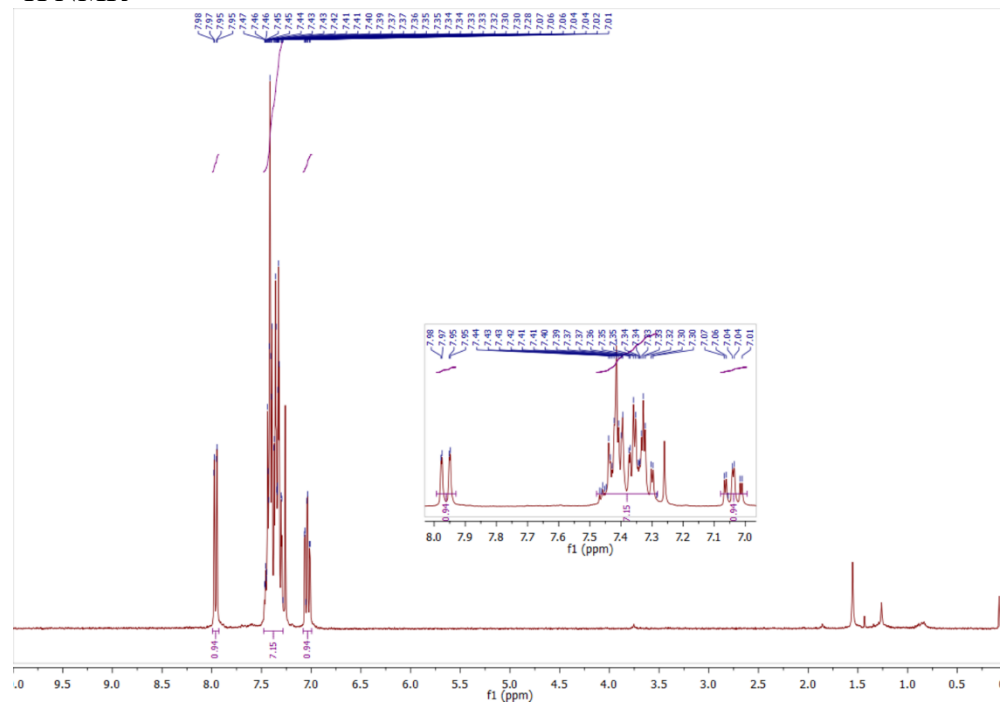


¹³C NMR



[17] 1-Iodo-2-phenylbenzene

¹H NMR



¹³C NMR

