

Supplemental material

Eckhardt et al., <https://doi.org/10.1085/jgp.201912333>

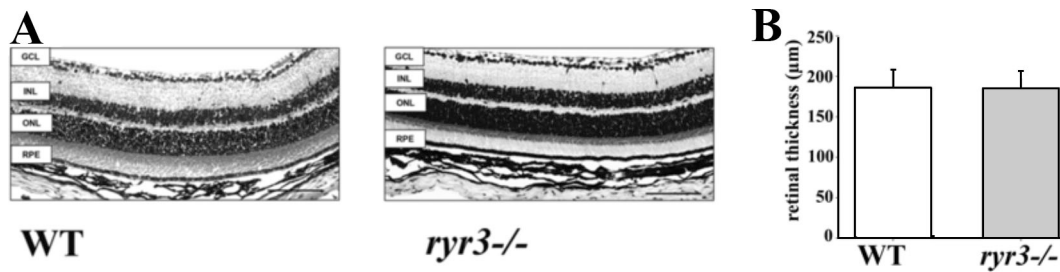


Figure S1. **Retinal morphology and layer structure is unaltered in *ryr3*^{-/-} mice.** (A) Overview staining of 5-µm paraffin sections using hematoxylin and eosin revealed no changes in the retinal structure of *ryr3*^{-/-} mice compared with their WT controls. GCL, ganglion cell layer; INL, inner nuclear layer; ONL, outer nuclear layer; RPE, retinal pigment epithelium. Scale bars, 100 µm. (B) Furthermore, no significant difference in mean (\pm SEM) retinal thickness was detectable.

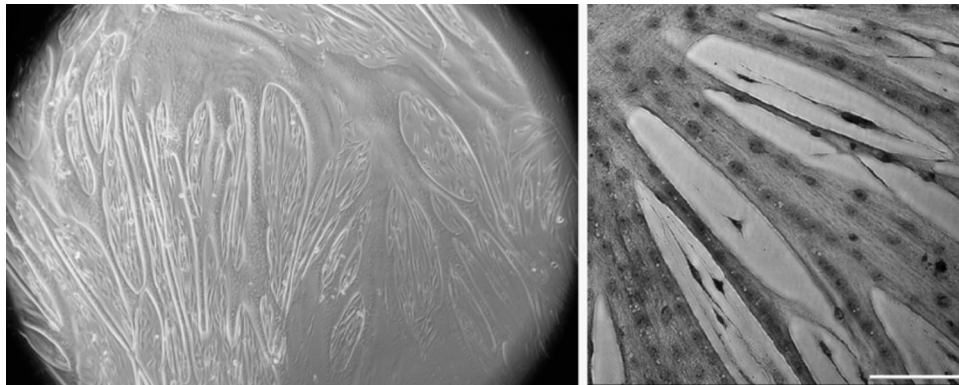


Figure S2. **Photomicrographs of myotubes from EOM.** Left: Low-magnification view of myotubes after 1–2 d in differentiation medium. Right: Cells were fixed with 3% paraformaldehyde 5 d after differentiation medium and stained with hematoxylin and eosin. Scale bar, 50 µm.

Table S1. Primers used for qPCR and mouse genotyping

Gene	Forward	Reverse
ACTN2	5'-CATCGAGGAGGATTCAGGAAC-3'	5'-CAATCTTGGAACCGCATTTT-3'
CACNA1C	5'-TCCCAGACATCCCTACTC-3'	5'-ACTGACGGTAGAGATGGTTGC-3'
CACNA1S	5'-TCAGCATCGTGGATGGAAAC-3'	5'-GTTCCAGAGTGTGTTGTCATCCT-3'
CASQ1	5'-ATGAGAGCTACCGACAGGATG-3'	5'-CACCGTCGTACTIONCAGGGAAG-3'
CASQ2	5'-TGCTCATGGTGGGGTTTATC-3'	5'-AGGTTCTGGTGAATAGAGACAGA-3'
JP-45	5'-CGGGCTCAAGAAGATGGAAA-3'	5'-CTTGTGAGCGTCAGATCTCC-3'
KCNMA1	5'-GCCAACAGAGAGCCGAAT-3'	5'-TCTTCAAATAGATCAGCCGCC-3'
PVALB	5'-ATCAAGAAGCGATAGGAGCC-3'	5'-GGCCAGAAGCGTCTTTGTT-3'
RYR1	5'-GCCTTTGACGTGGGATTACAG-3'	5'-CCCCAACTCGAACCTTCTCTC-3'
RYR3	5'-ACCAGCAGG AGCAAG TAC G-3'	5'-GGGGTCGTGTCAAAGTAGTCA-3'
RYR3 genotyping	5'-ATGAAGTTGTACTIONCAGTGCATTGC-3'	5'-TCCAGGAATCTCTGGTATACTAGG-3'
SLC8A3	5'-GCATATGGGGAGCTGGAGTT-3'	5'-GCTTCTGTCTGTCACTIONTCTGAT-3'

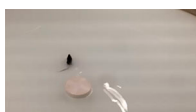
Table S2. Kinetic properties of isolated EOM from WT and *ryr3*^{-/-} mice

	EOM	Peak force (ms)	TTHP (ms)	TTP (ms)	HRT (ms)
Twitch force kinetic parameters	WT EOM	0.328 ± 0.095 (n = 8)	2.53 ± 0.24 (n = 8)	10.09 ± 1.06 (n = 8)	42.28 ± 9.82 (n = 8)
	<i>ryr3</i> ^{-/-} EOM	0.126 ± 0.017* (n = 9)	8.81 ± 2.29* (n = 9)	42.75 ± 8.78** (n = 9)	147.44 ± 8.36**** (n = 9)

Experiments were performed at 30°C. Values represent mean ± SEM. *, P < 0.05; **, P < 0.01; ****, P < 0.0001, Student's *t* test.



Video 1. **WT mouse swimming in cued water maze.** Experiments were performed as described in the Materials and methods section.



Video 2. ***ryr3*^{-/-} mouse swimming in cued water maze.** Experiments were performed as described in the Materials and methods section.