

The development of a novel SNP genotyping assay to differentiate cacao clones

Jocelyn De Wever, Helena Everaert, Frauke Coppieters, Hayley Rottiers, Koen Dewettinck, Steve Lefever, Kathy Messens

Appendix 2: DMAS-qPCR Difference plots

One difference plot per SNP assay

Two dimensional plot created by plotting the ΔCq ($Cq_{ref} - Cq_{alt}$) against the clones analyzed. In these plots heterozygous samples will show Cq differences around zero, while homozygous samples show either negative or positive differences. The plots below display the results of each DMAS-qPCR SNP assay used for genotyping different cacao accessions.

X/ Y values

X-axis : cacao accessions analyzed

1	LCTEEN37/A
2	IFC5[CIV]
3	PA137[PER]
4	ICS1
5	ICS43
6	APA4
7	MA12[BRA]
8	LCTEEN62/S-4
9	POUND16/B
10	MAN15/2[BRA]
11	IMC67
12	PA88[PER]
13	PA156[PER]
14	PA70[PER]
15	PA120[PER]
16	SCA6
17	SCA9
18	NA32
19	NA33
20	MO81
21	IMC53
22	AMAZ15/15
23	PA127
24	NA149
25	SIAL339
26	SPEC41/6-18
27	FSC13
28	LCTEEN302
29	GU114/P
30	KER6
31	KER3
32	GU133/C

33	GU261/P
34	PA121[PER]
35	PA13[PER]
36	NA26
37	NA232
38	NA399
39	SCA11
40	SCA9
41	U45[PER]
42	U70[PER]
43	IMC60
44	IMC103
45	COCA3370/5[CHA]
46	POUND12/A
47	LCTEEN163/A
48	LCTEEN401
49	LCTEEN261/S-4
50	NAPO25[CHA]
51	RB47[BRA]
52	LCTEEN412
53	EBC148
54	RB46[BRA]
55	ICS1
56	UF676
57	ICS95
58	UF613
59	MO20
60	U26[PER]
61	EET183[ECU]
62	EET19[ECU]
63	EET95[ECU]
64	CRIOLLO21[CRI]
65	CRIOLLO11[CRI]

Y –axis: ΔCq ($Cq_{ref} - Cq_{alt}$)

Set Thresholds:

----- (black, striped line) = Manual upper and lower boundary

..... (blue, pointed line) = Calculated upper and lower boundary ($\mu \pm 3xSD(H)^1$)

↔ Boundaries were set at 0 for certain SNP markers, as they could not be calculated.

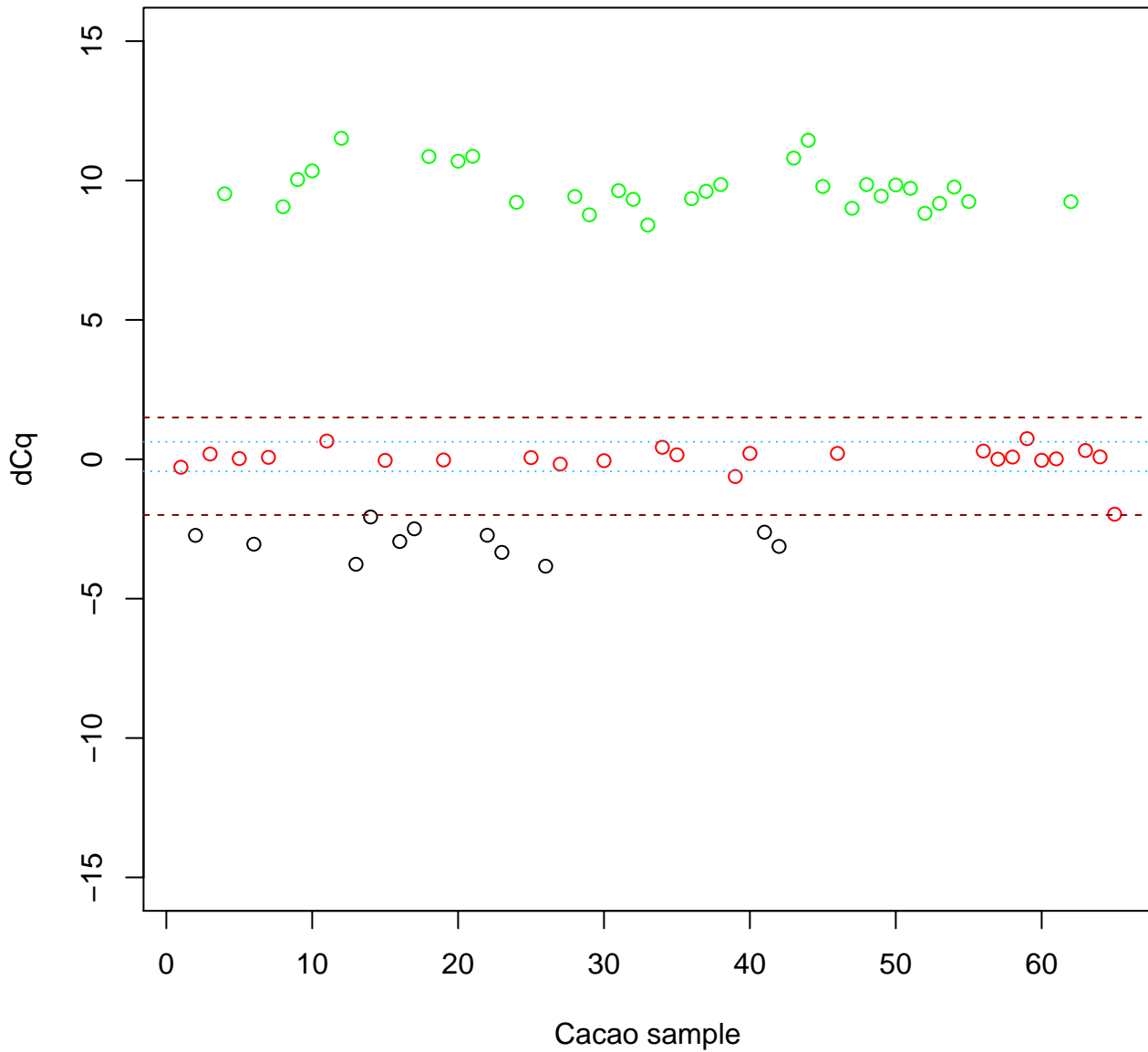
¹ with μ and $SD(H)$ representing the average and standard deviation for all ΔCq values from the validated heterozygous samples

Table of content

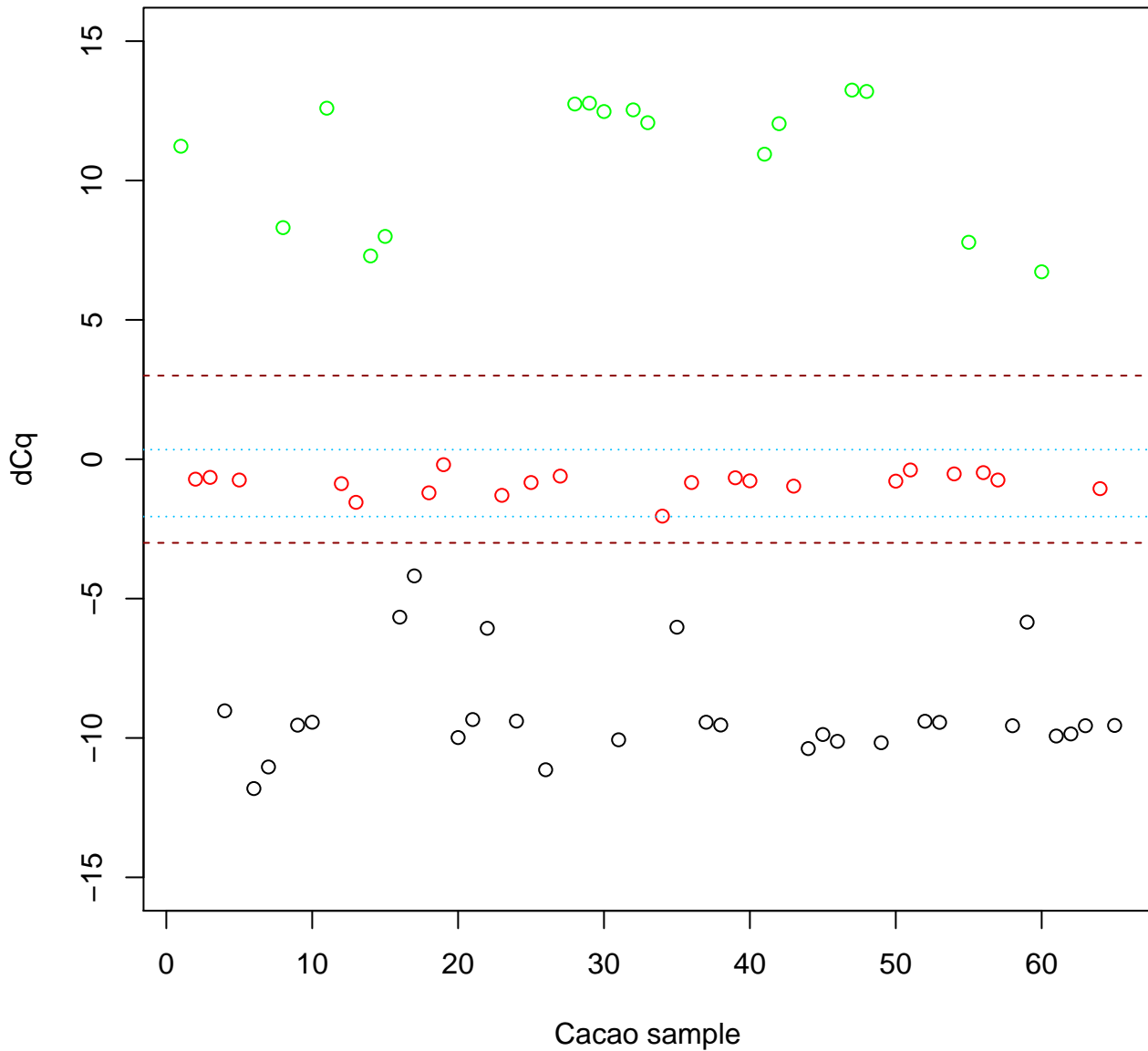
1. TcSNP139
2. TcSNP144
3. TcSNP151
4. TcSNP174
5. TcSNP193
6. TcSNP226
7. TcSNP230
8. TcSNP364
9. TcSNP372
10. TcSNP413
11. TcSNP448
12. TcSNP577
13. TcSNP591
14. TcSNP602
15. TcSNP606
16. TcSNP751
17. TcSNP786
18. TcSNP852
19. TcSNP860
20. TcSNP872
21. TcSNP878
22. TcSNP891
23. TcSNP994
24. TcSNP1041
25. TcSNP1060
26. TcSNP1111
27. TcSNP1126
28. TcSNP1280
29. TcSNP1331
30. TcSNP1439
31. TcSNP1458
32. Tcm002s00644224
33. Tcm002s29938429
34. Tcm002s34015437
35. Tcm003s05554949
36. Tcm003s12502217
37. Tcm003s20315420
38. Tcm003s27807955
39. Tcm006s26507164
40. Tcm008s17168944
41. Tcm009s28255143

42. Tcm009s41415628

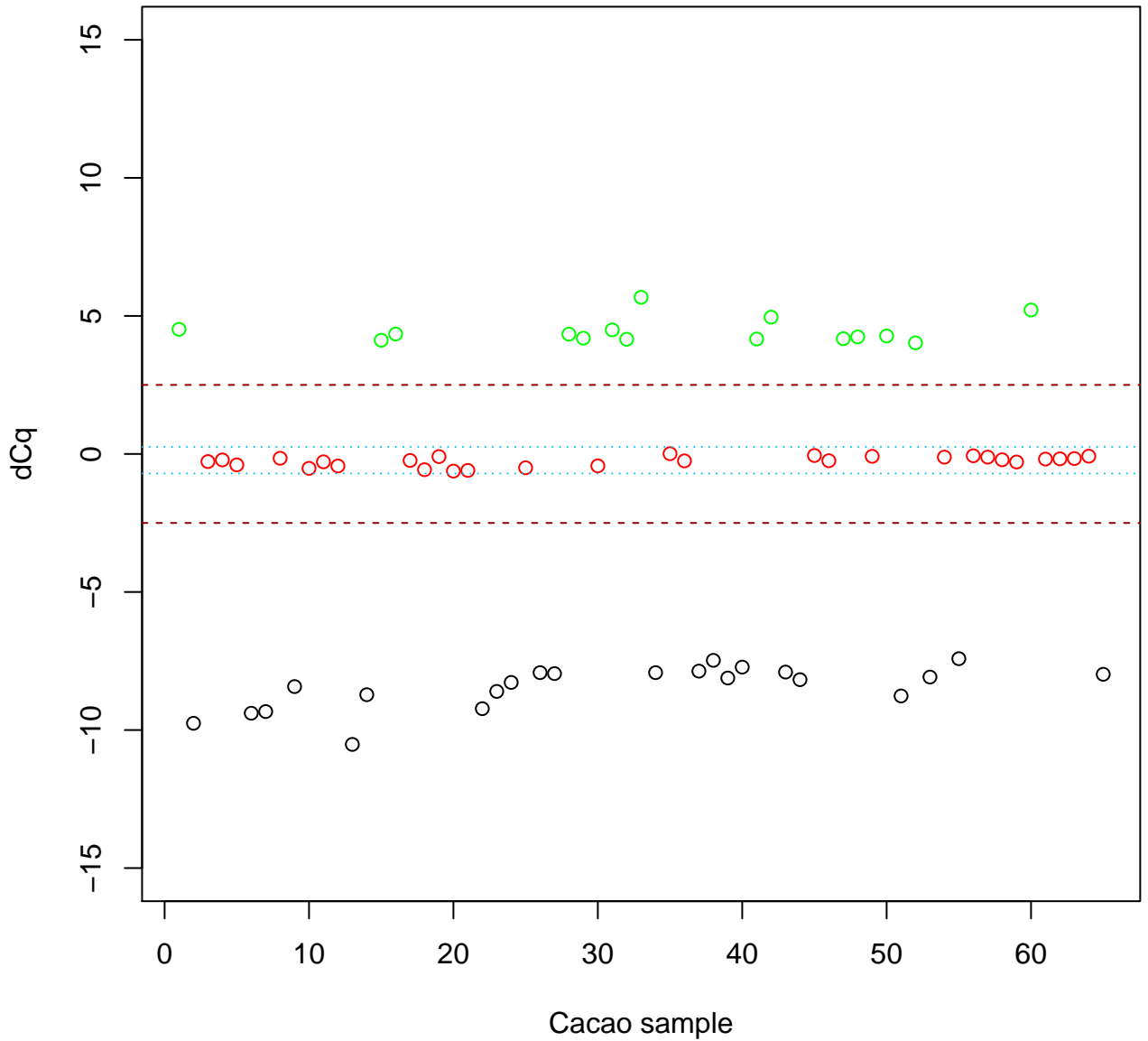
TcSNP139



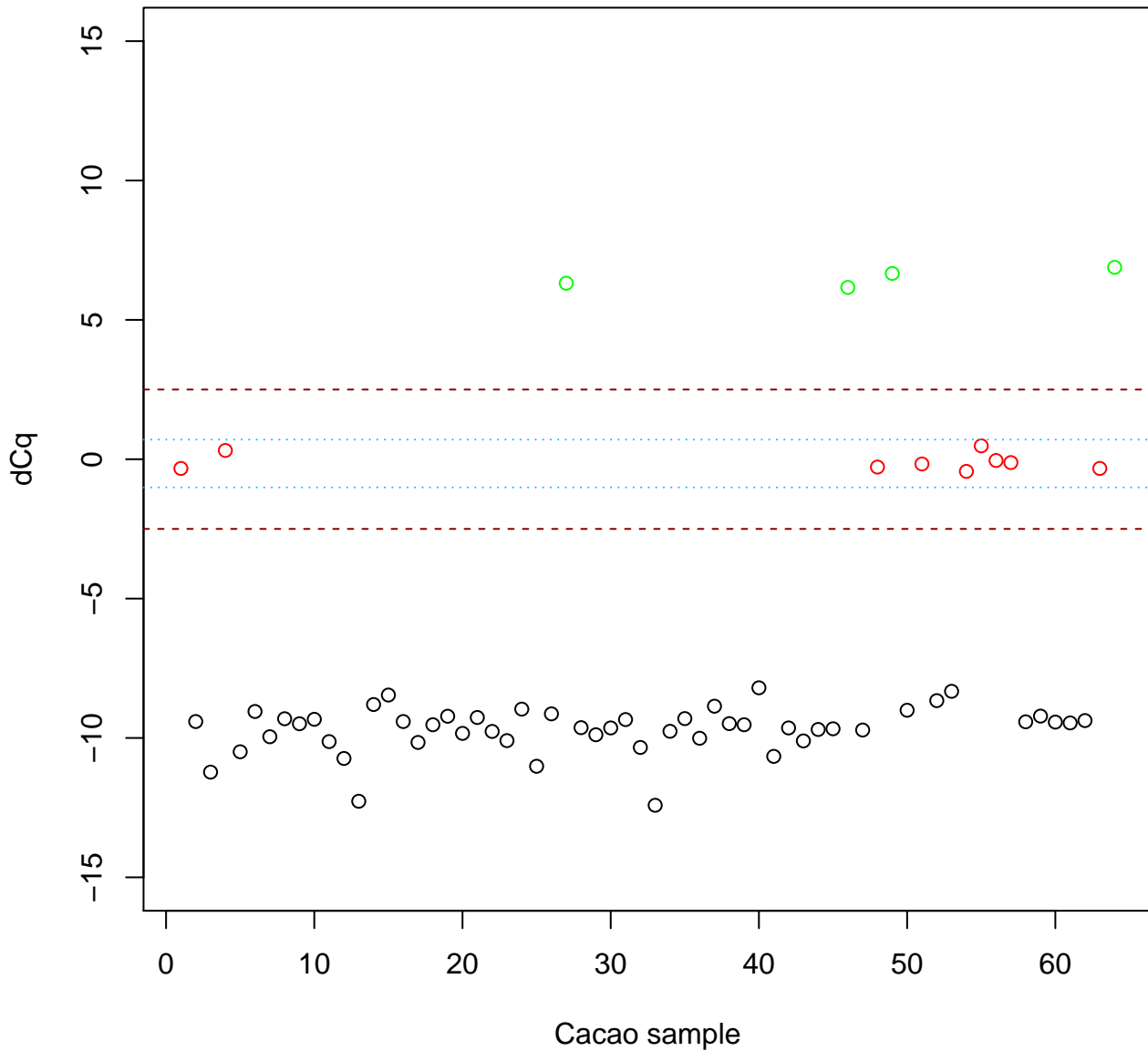
TcSNP144



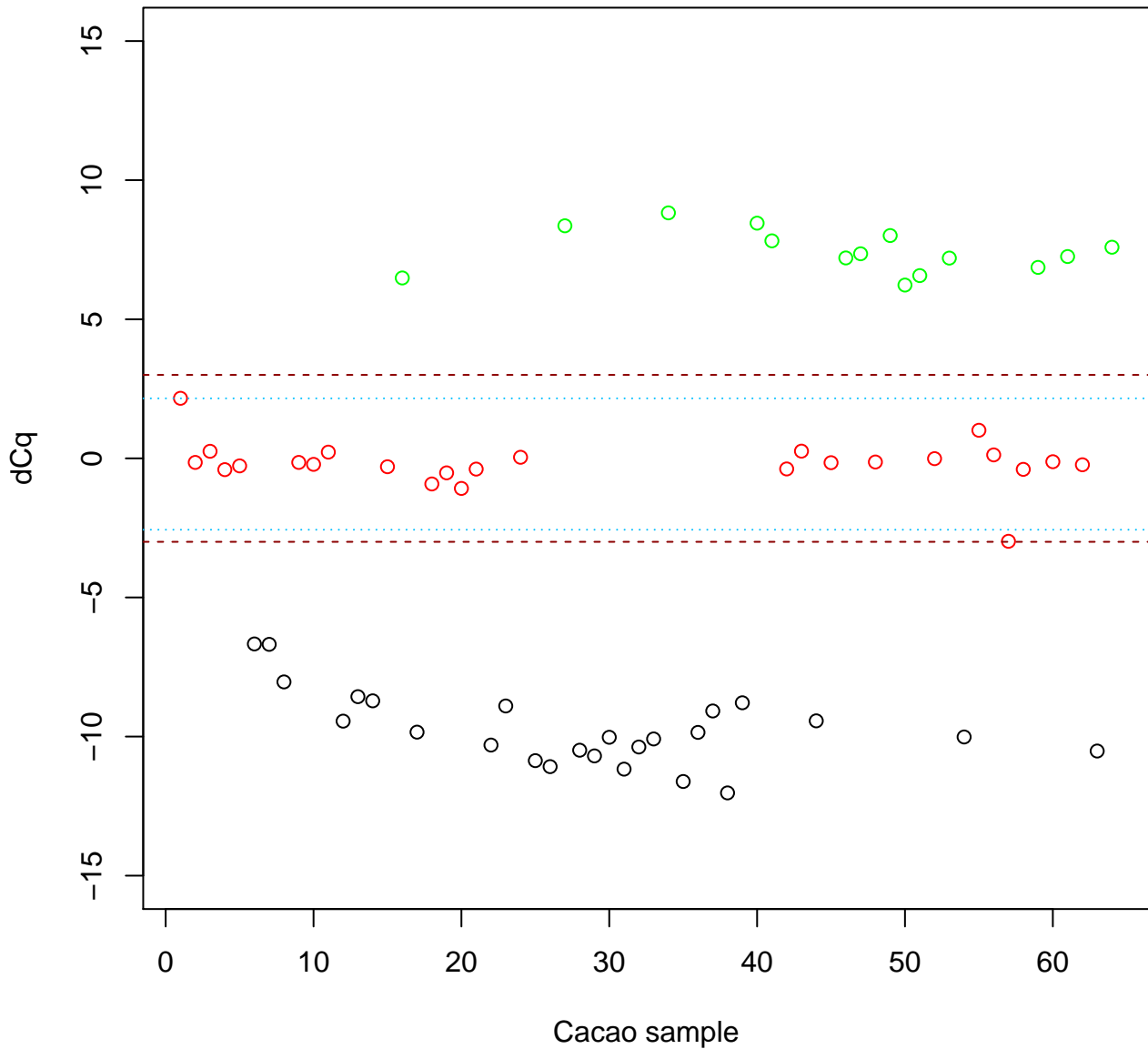
TcSNP151



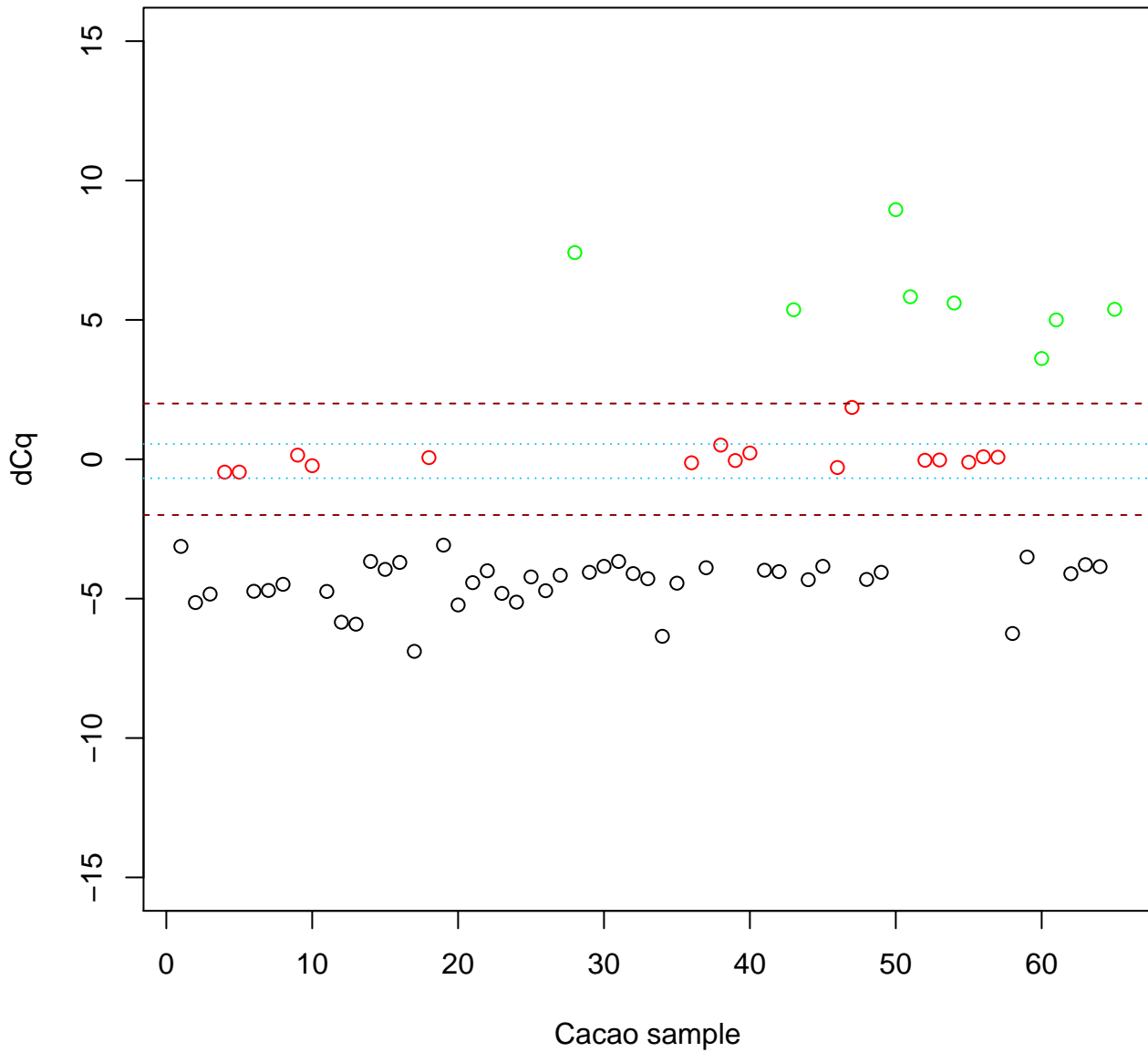
TcSNP174



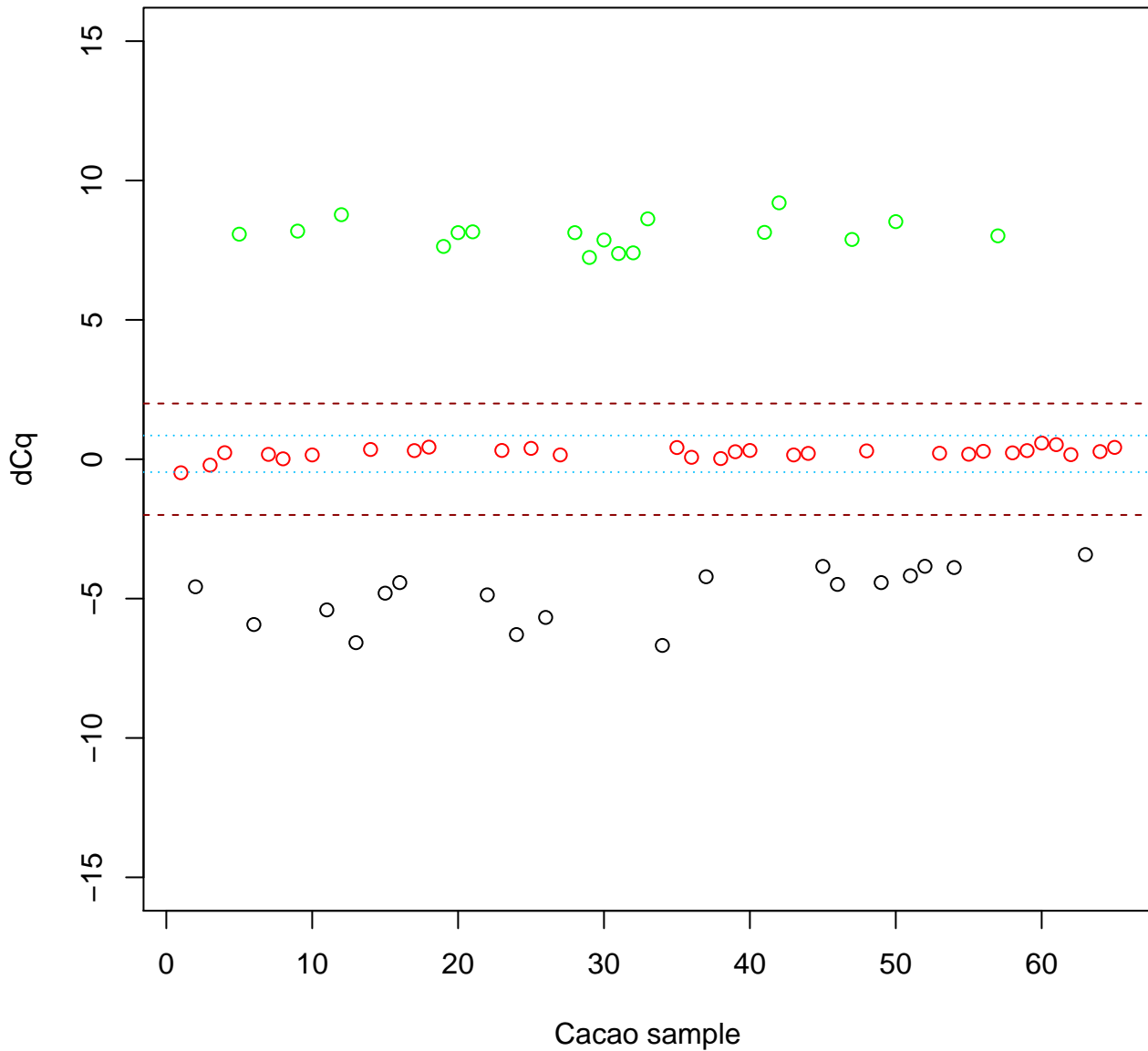
TcSNP193



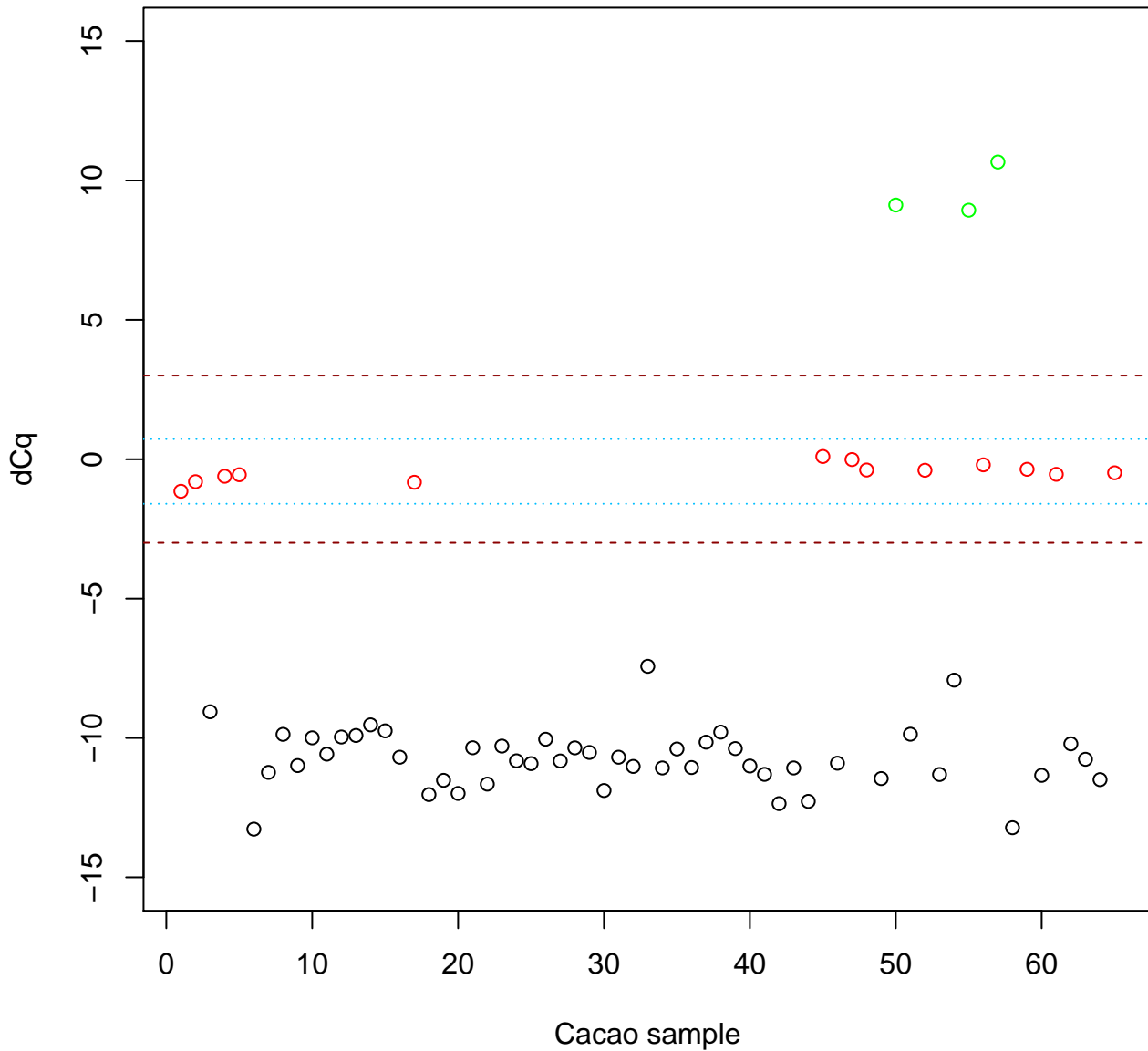
TcSNP226



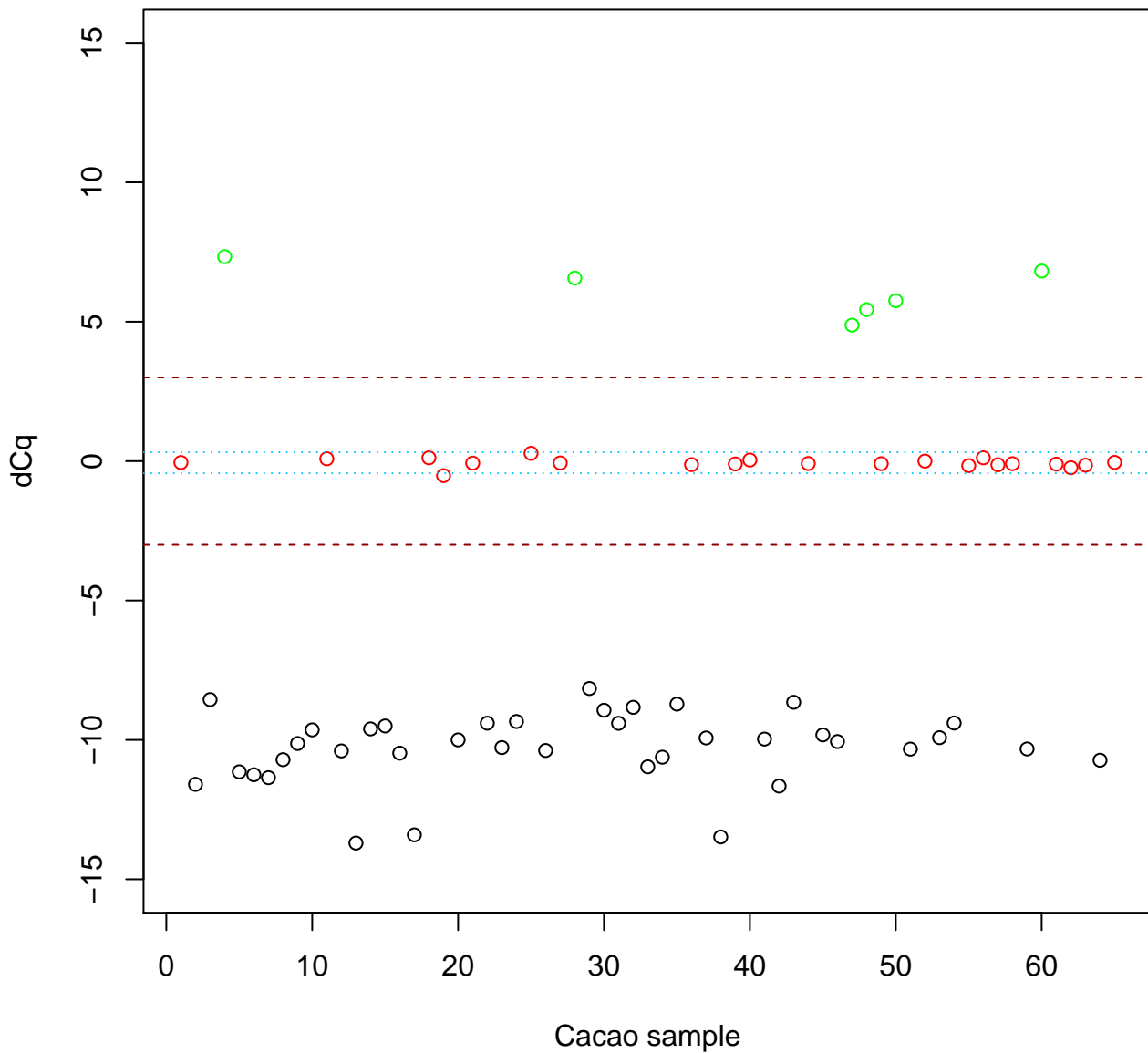
TcSNP230



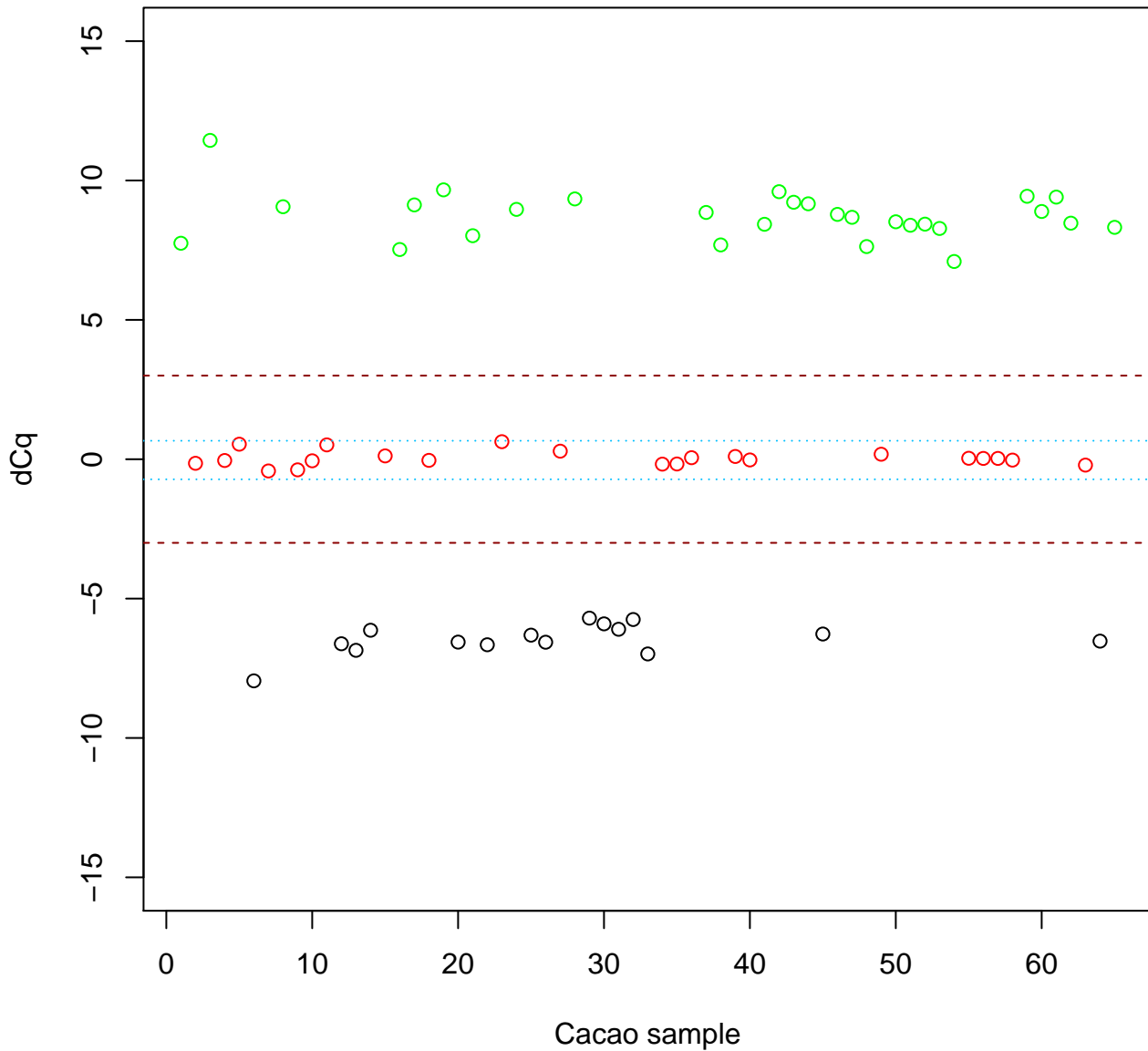
TcSNP364



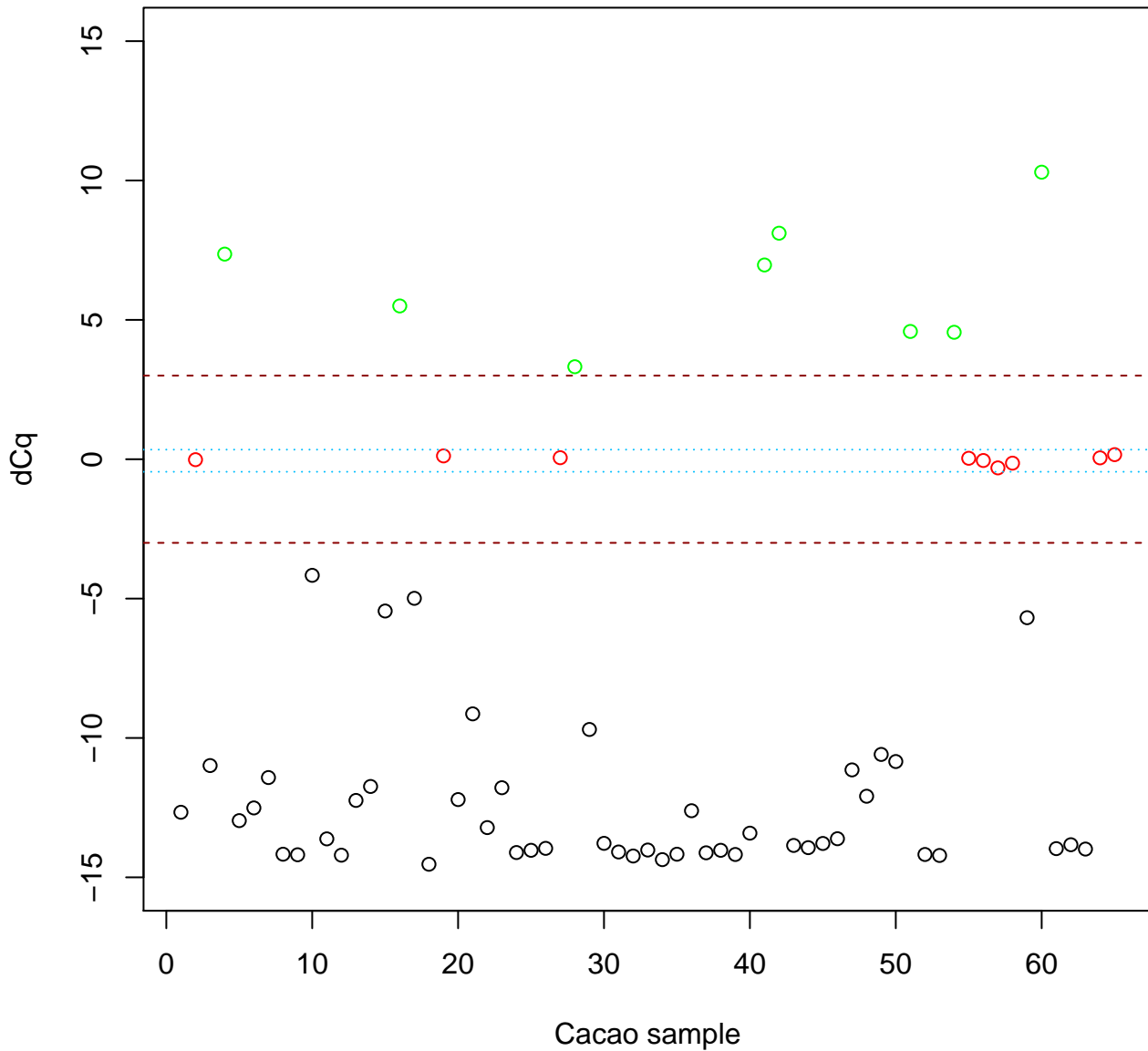
TcSNP372



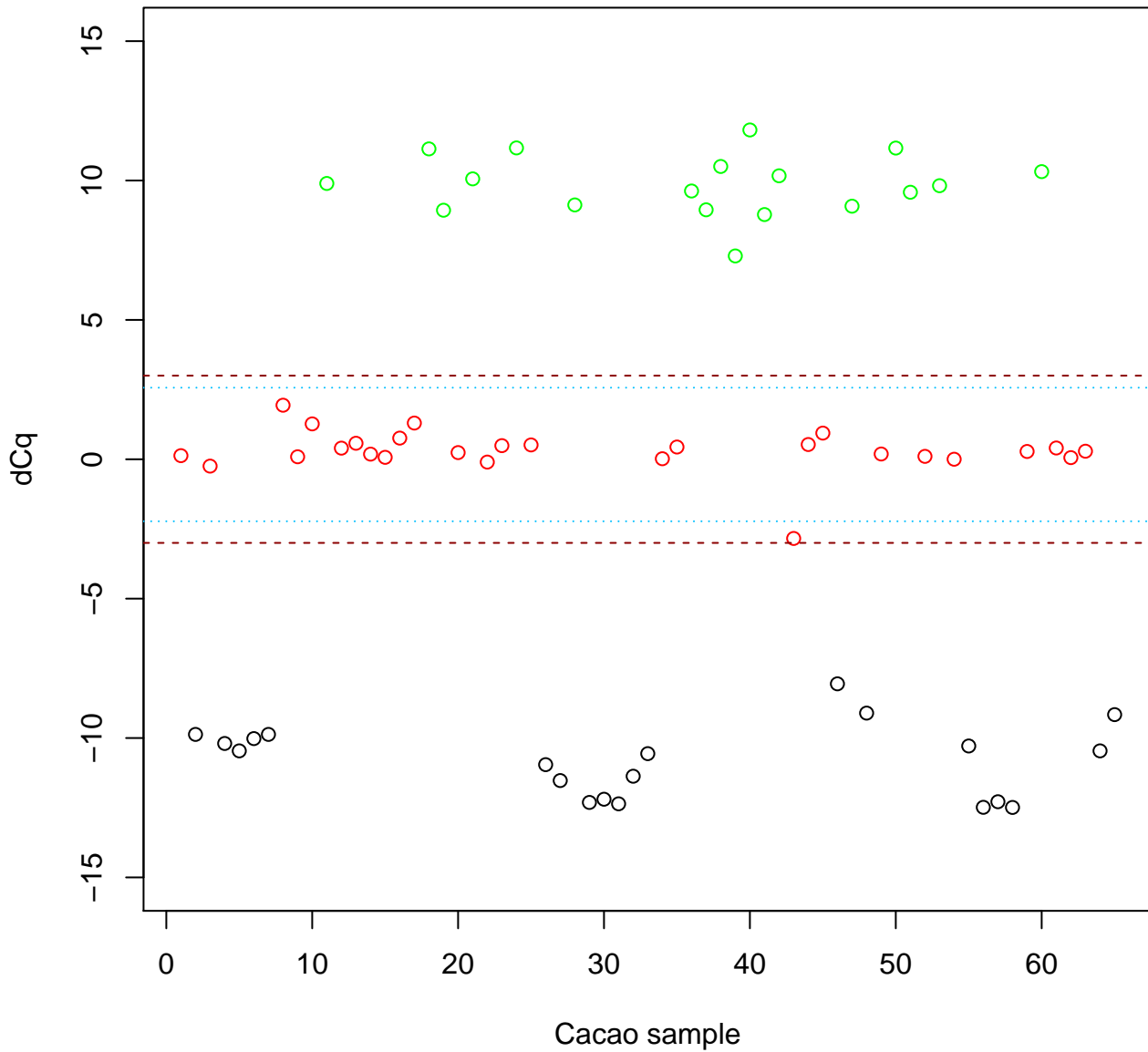
TcSNP413



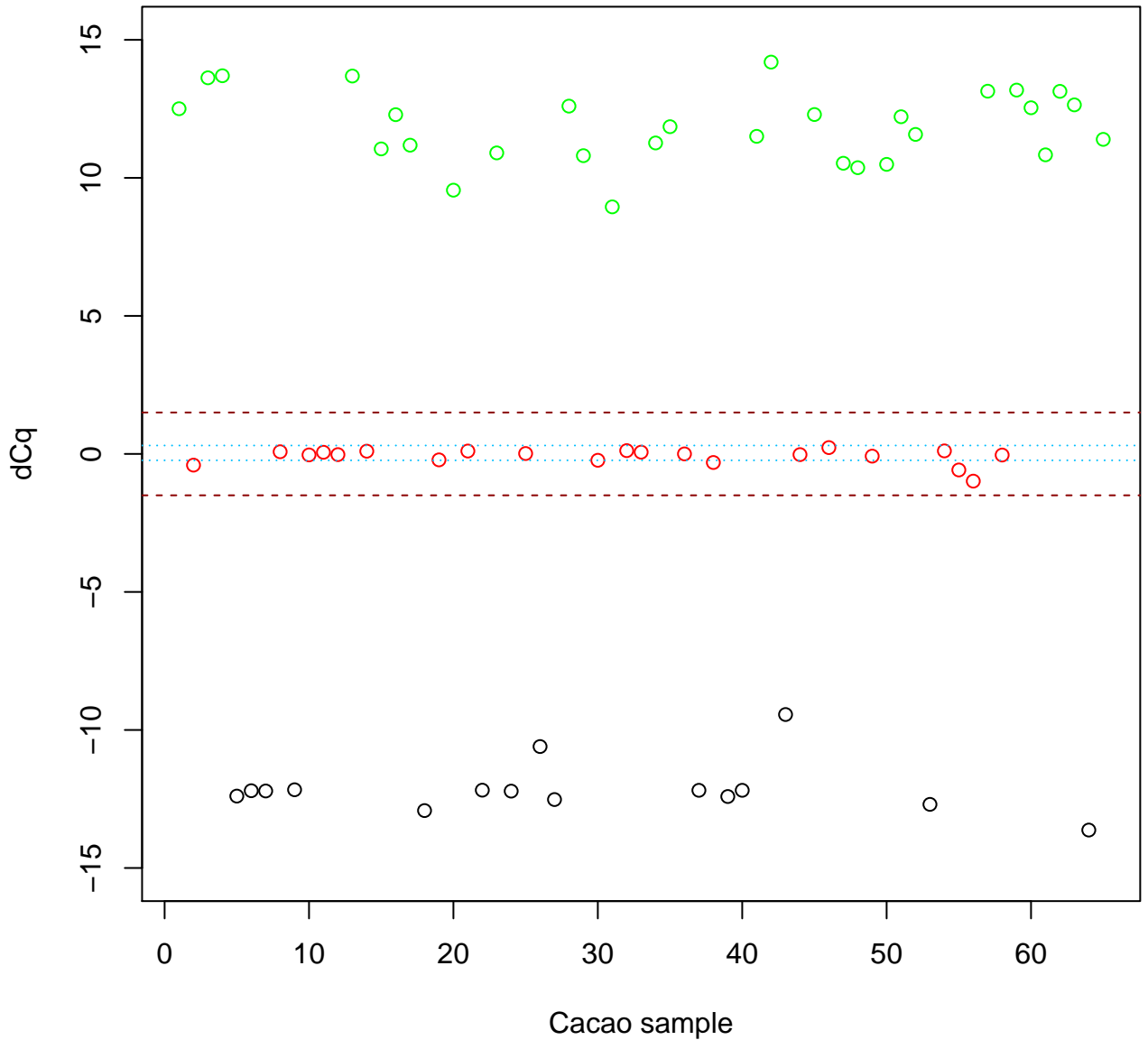
TcSNP448



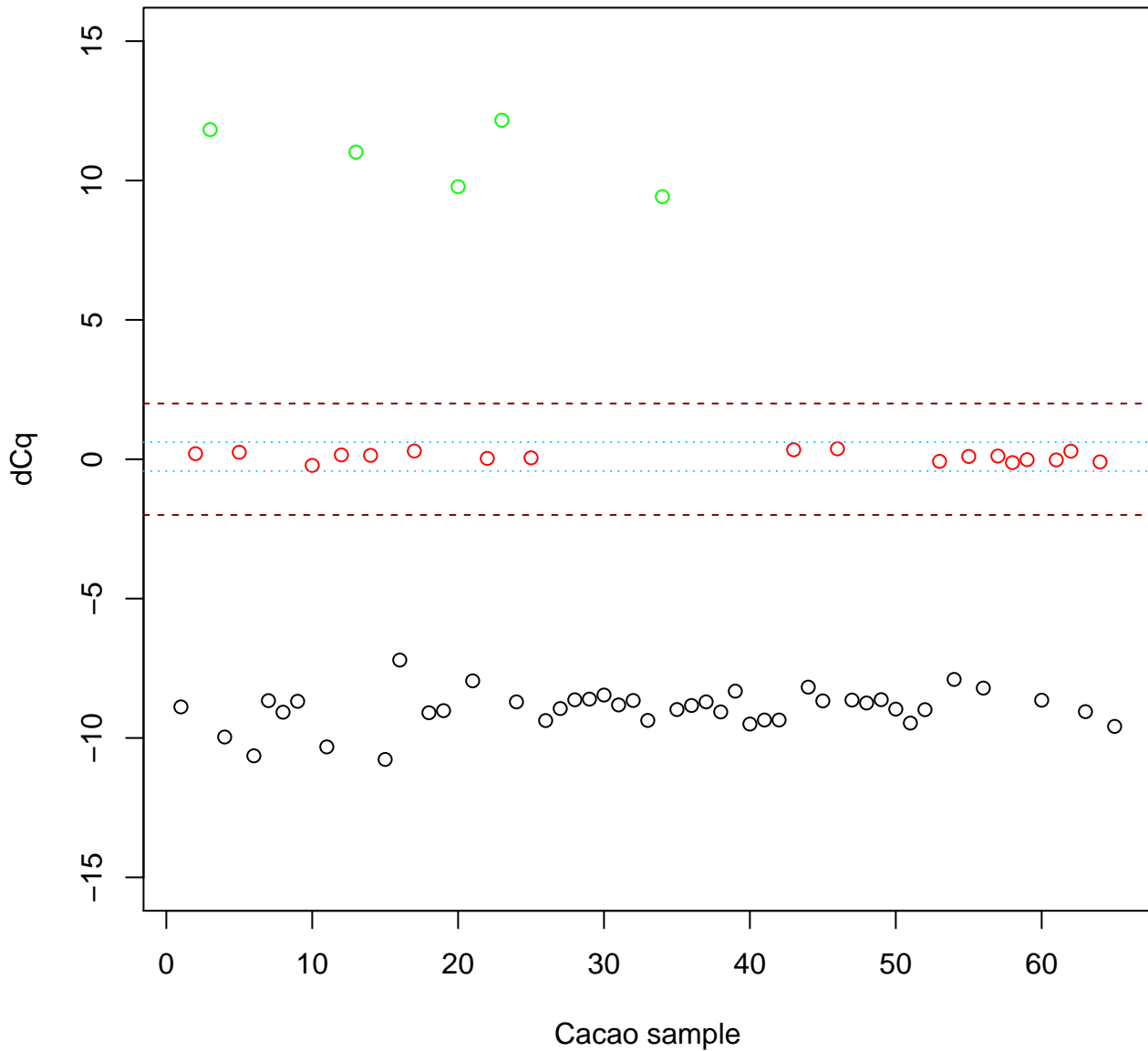
TcSNP577



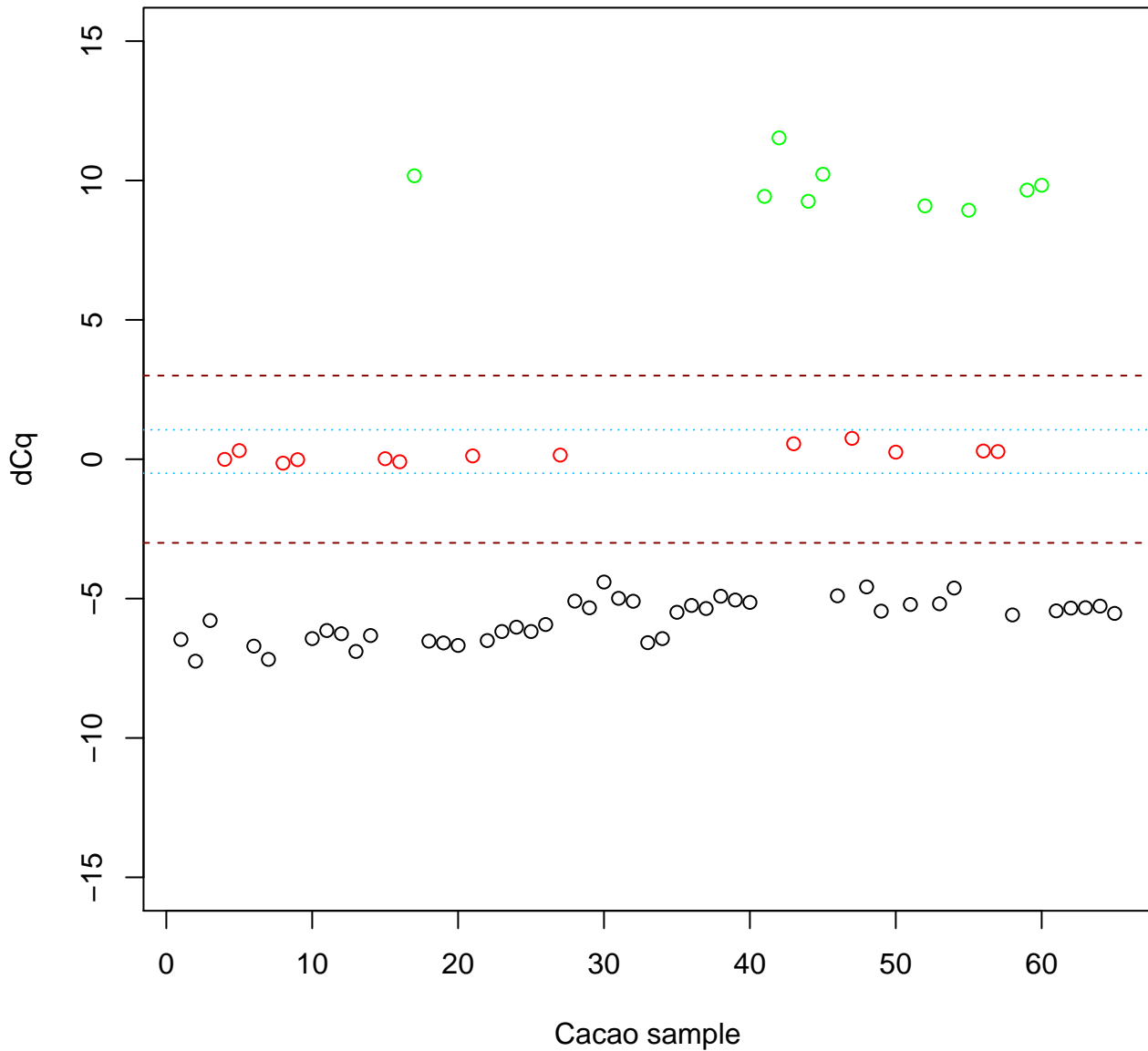
TcSNP591



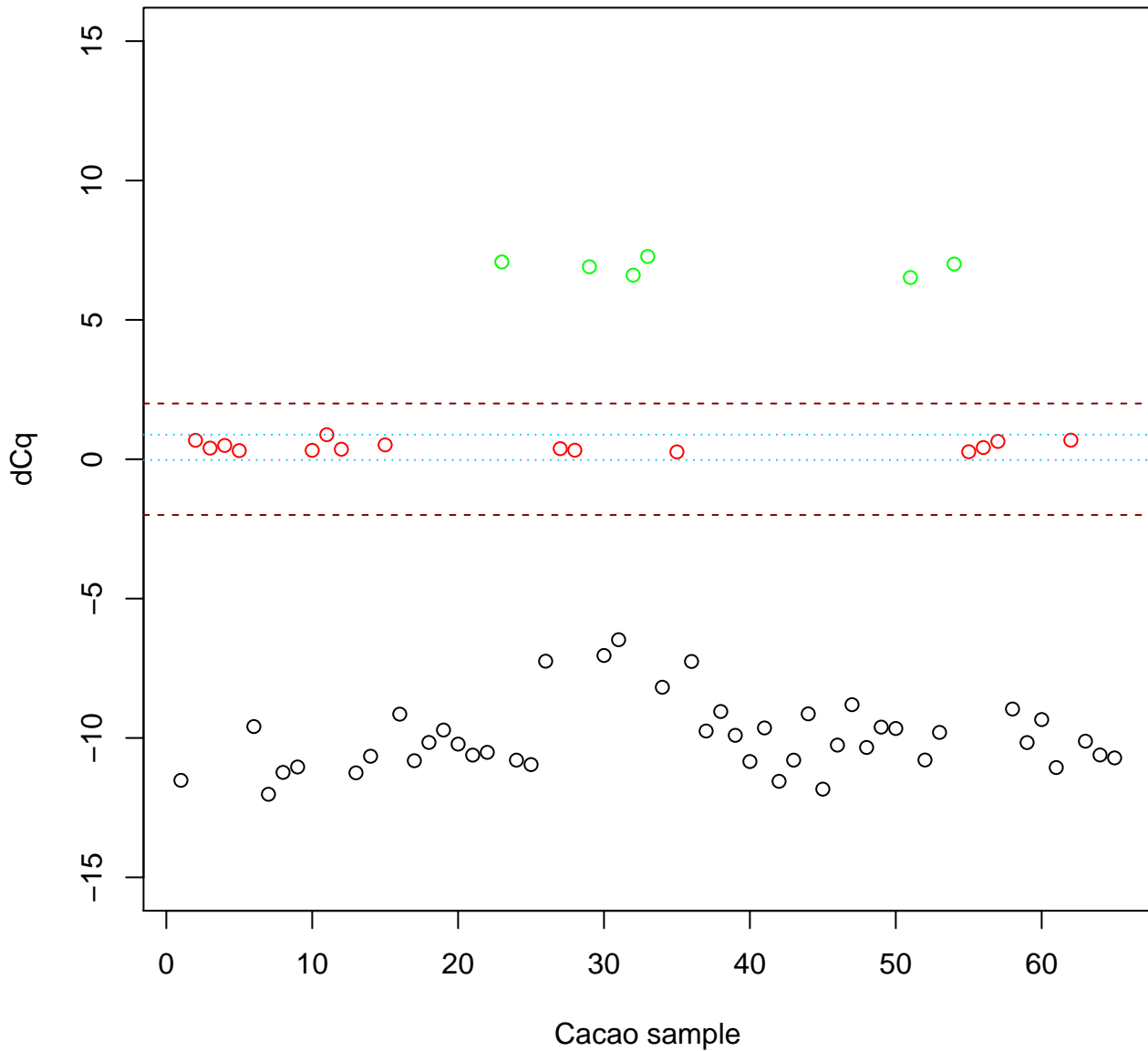
TcSNP602



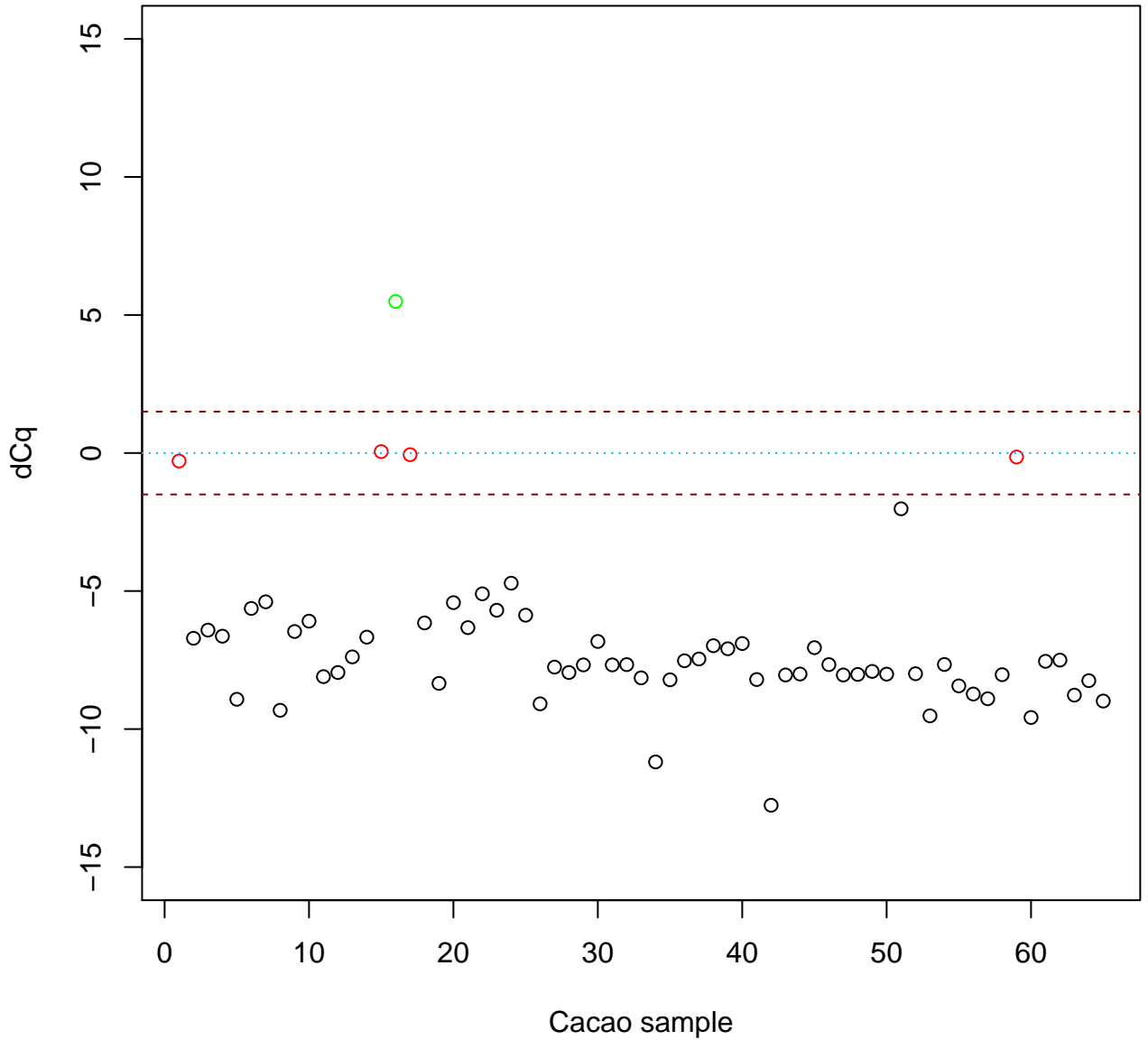
TcSNP606



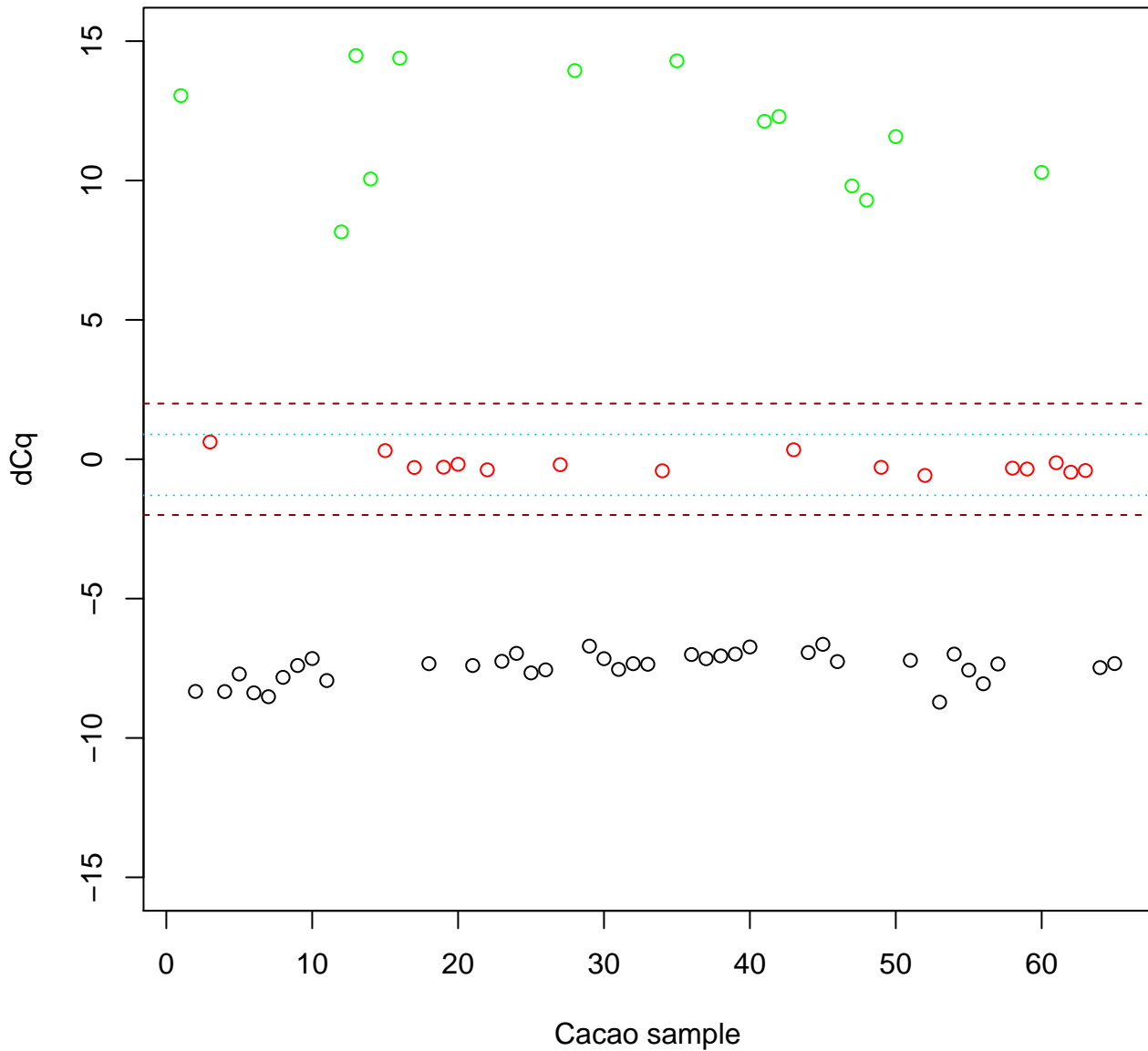
TcSNP751



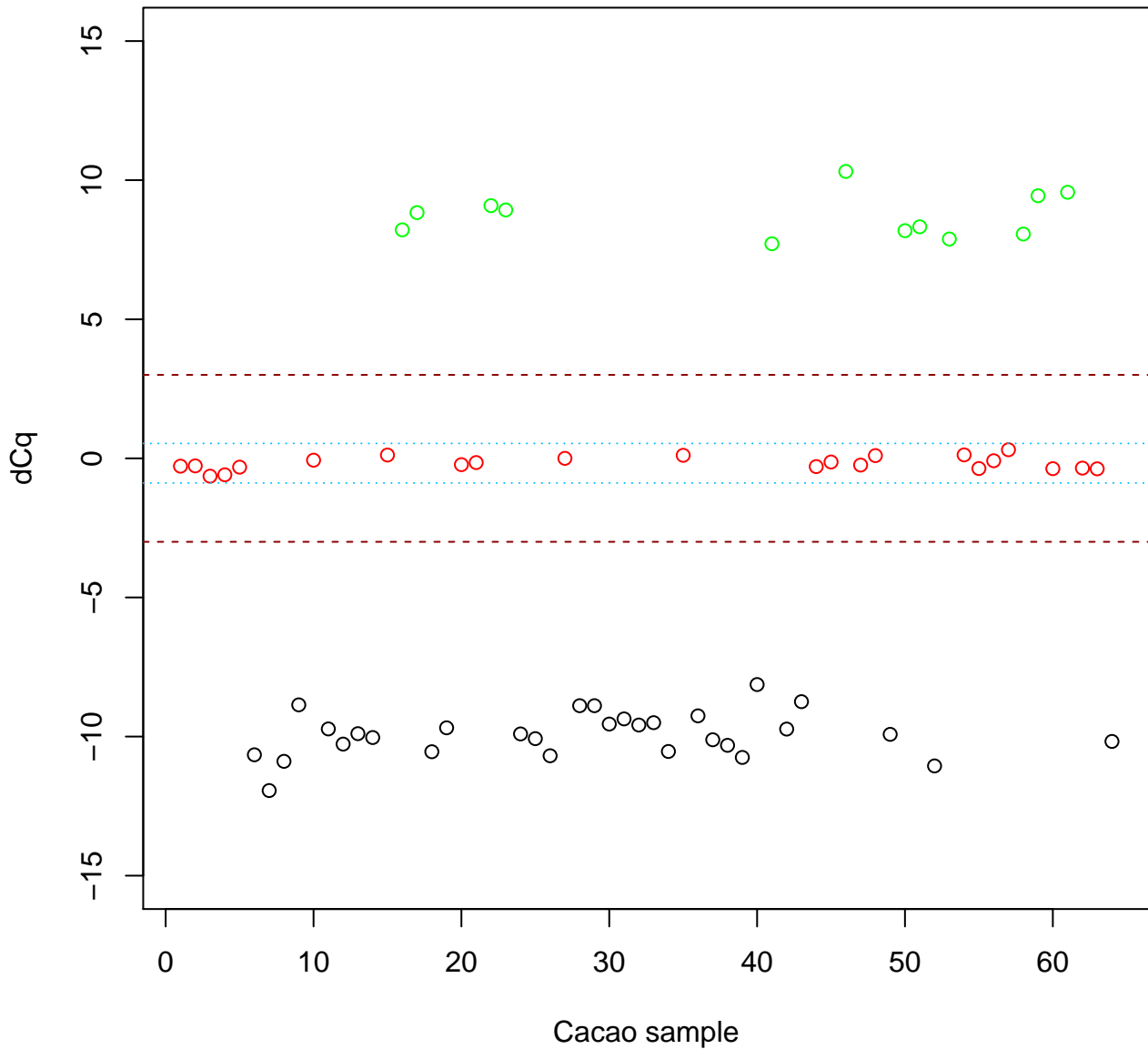
TcSNP786



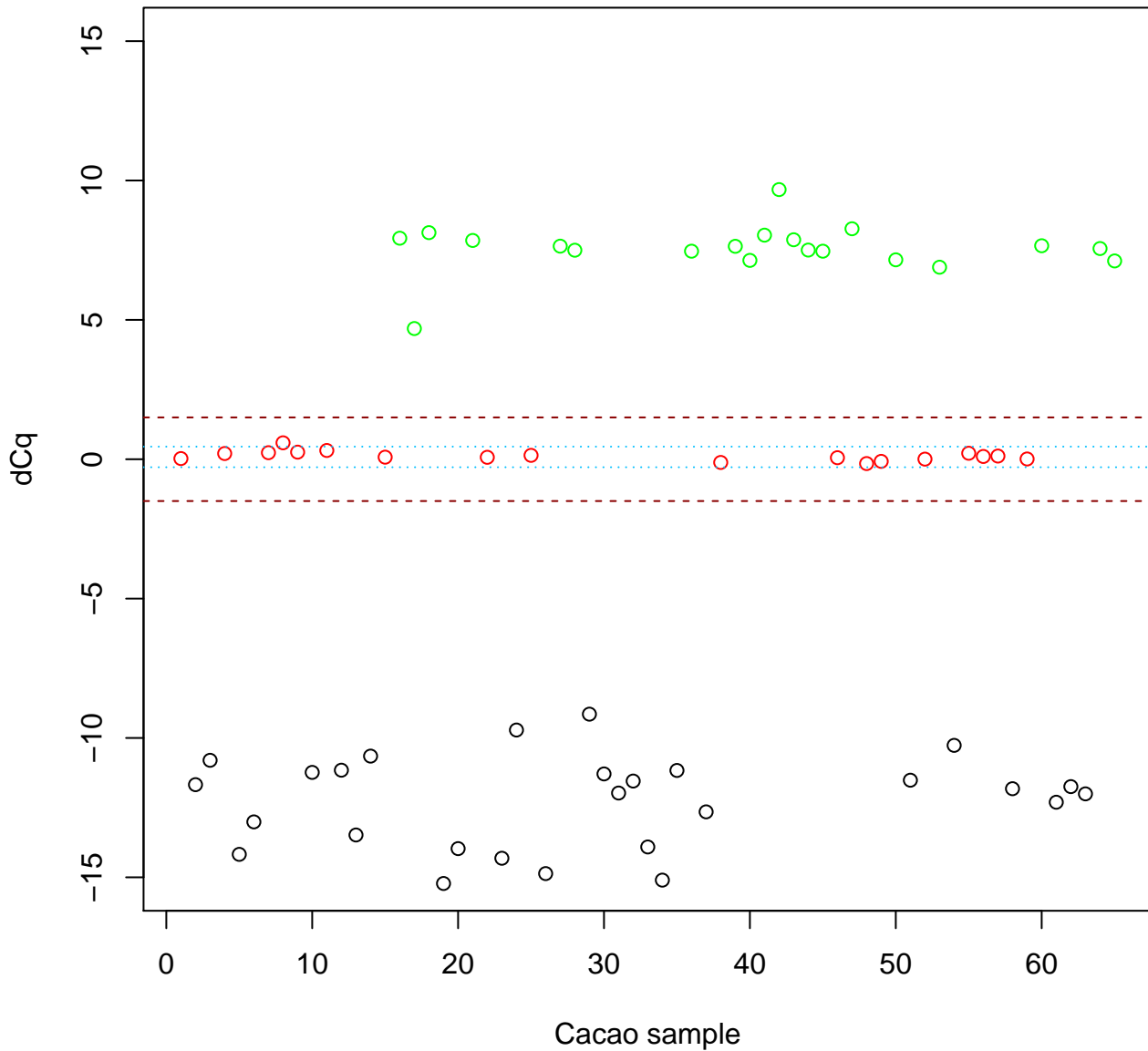
TcSNP852



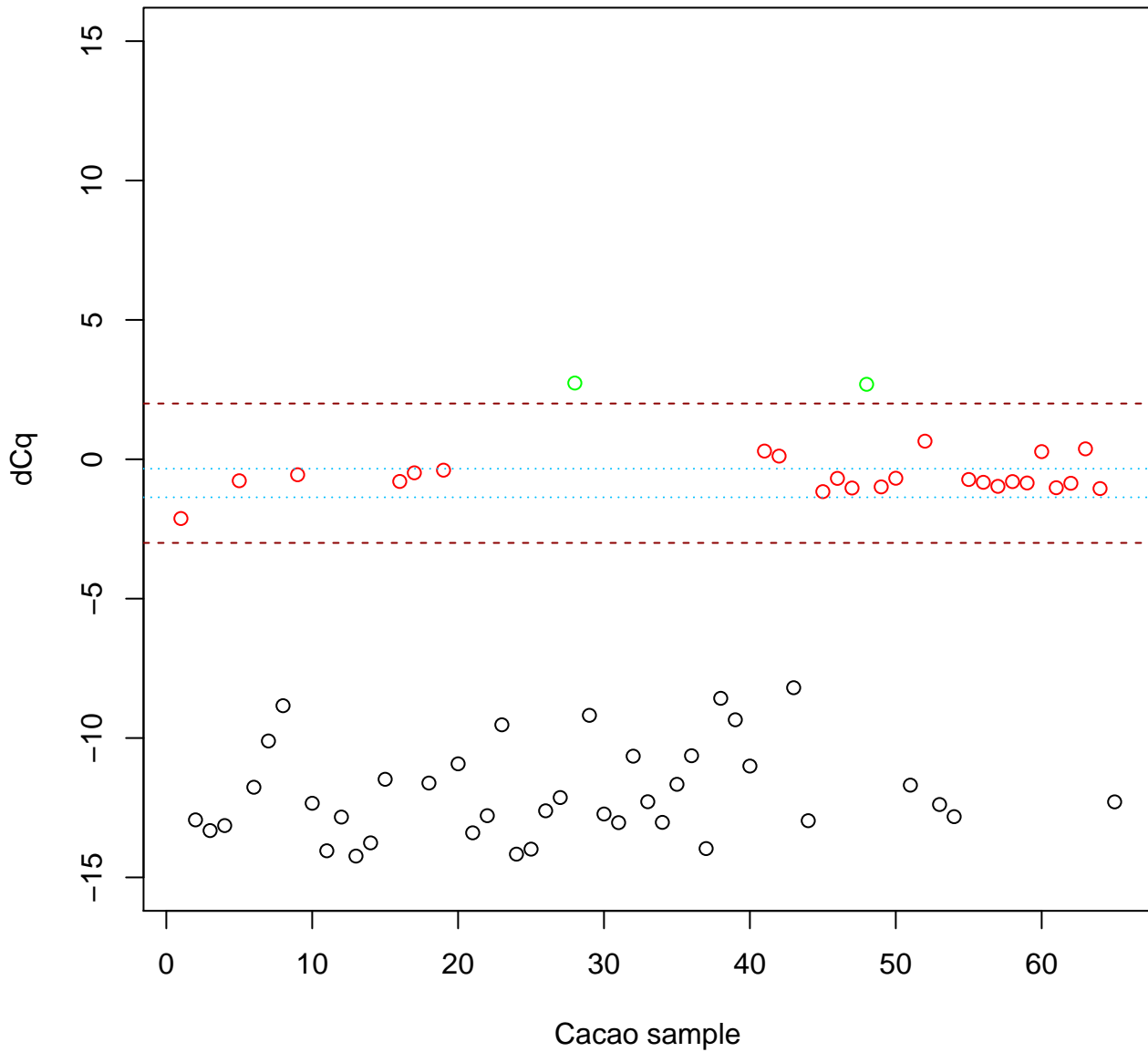
TcSNP860



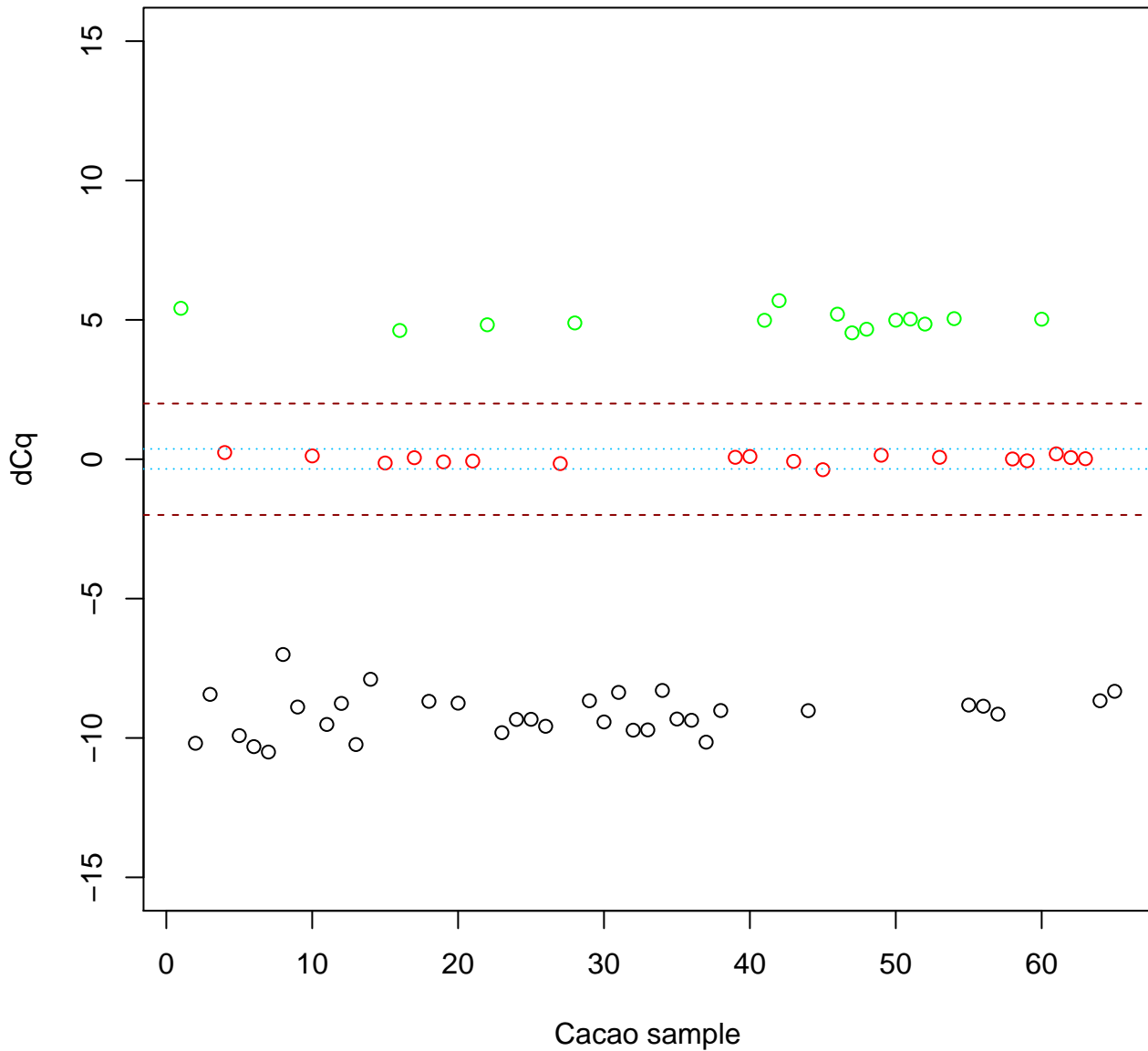
TcSNP872



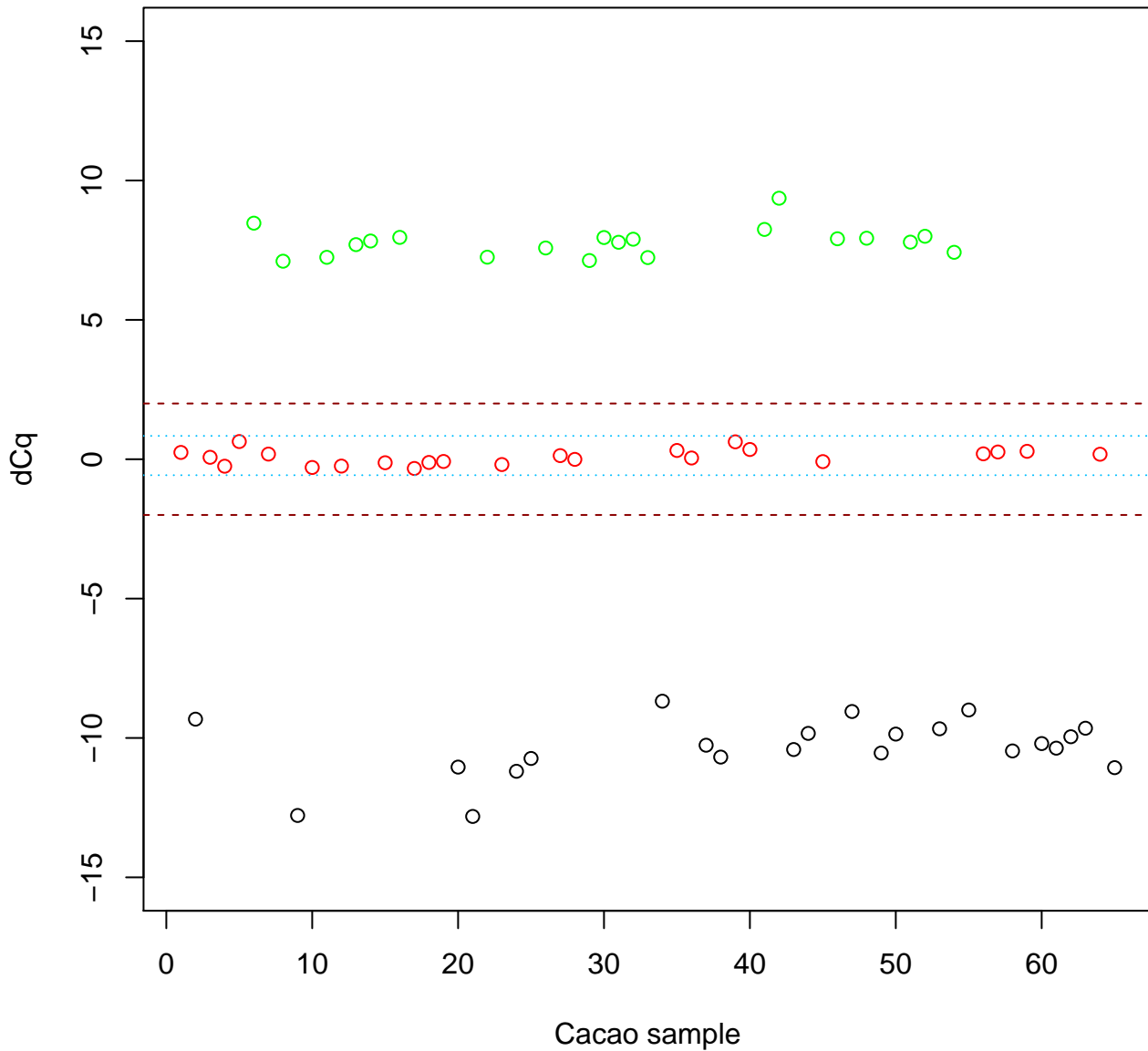
TcSNP878



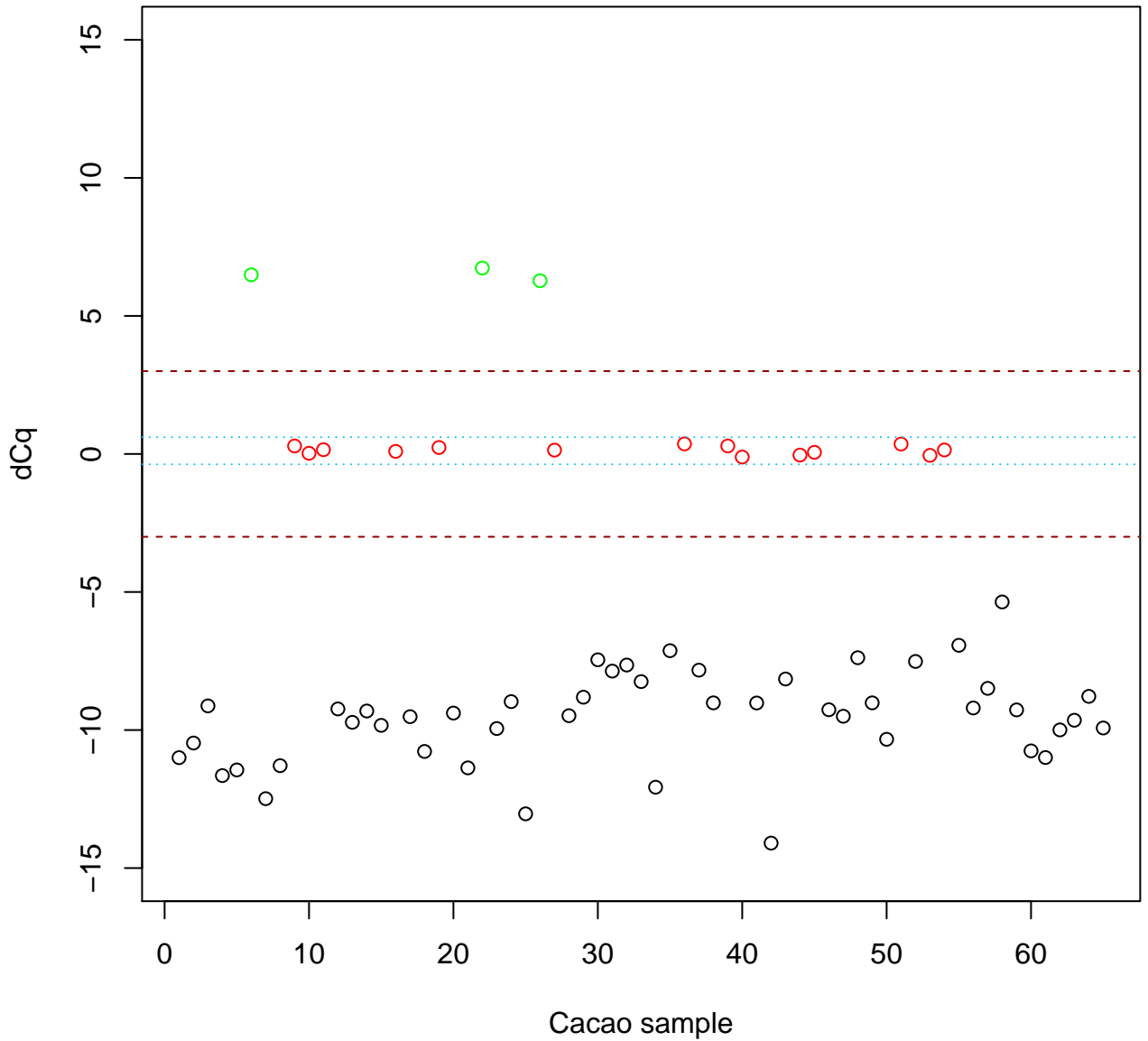
TcSNP891



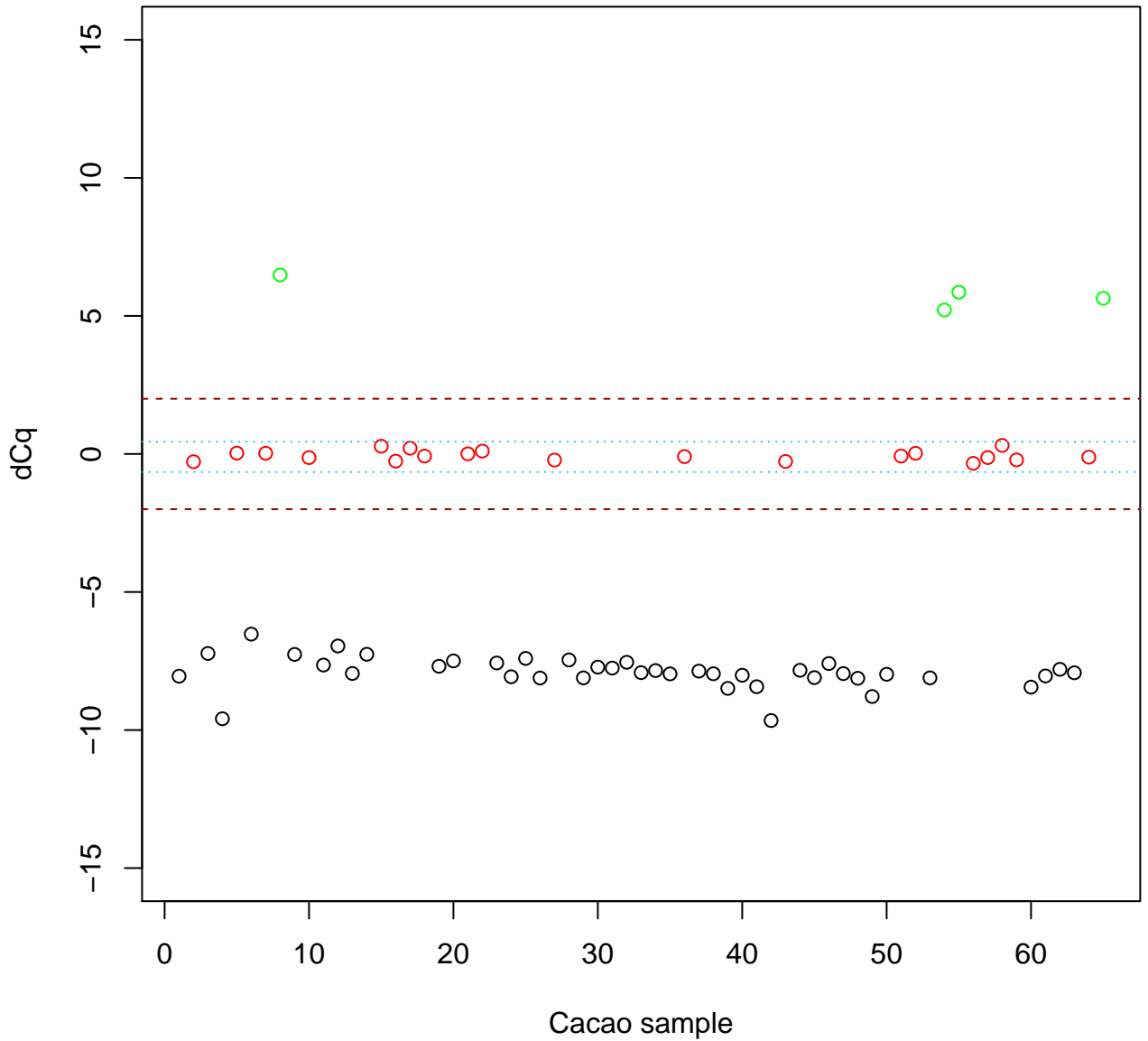
TcSNP994



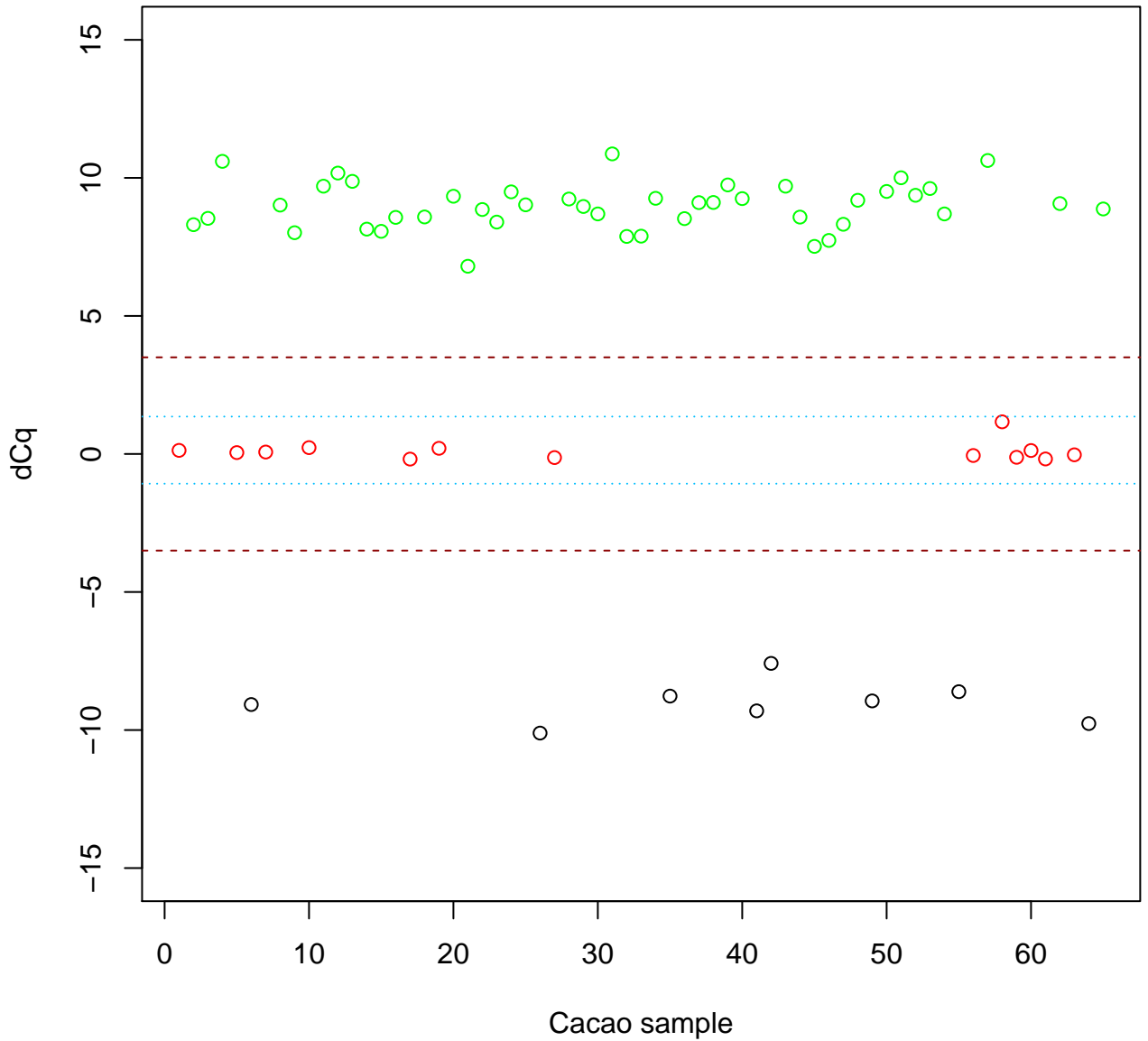
TcSNP1041



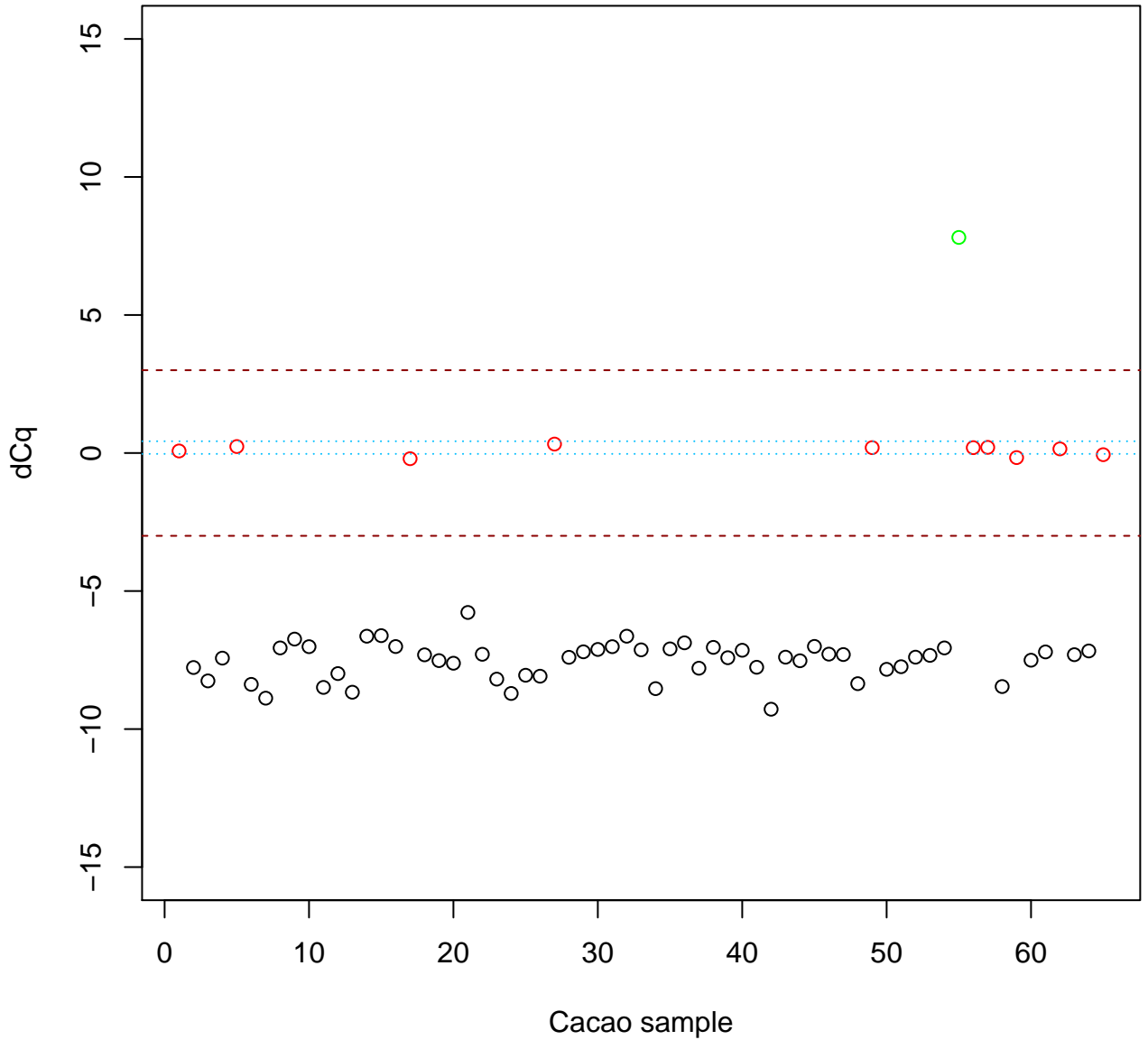
TcSNP1060



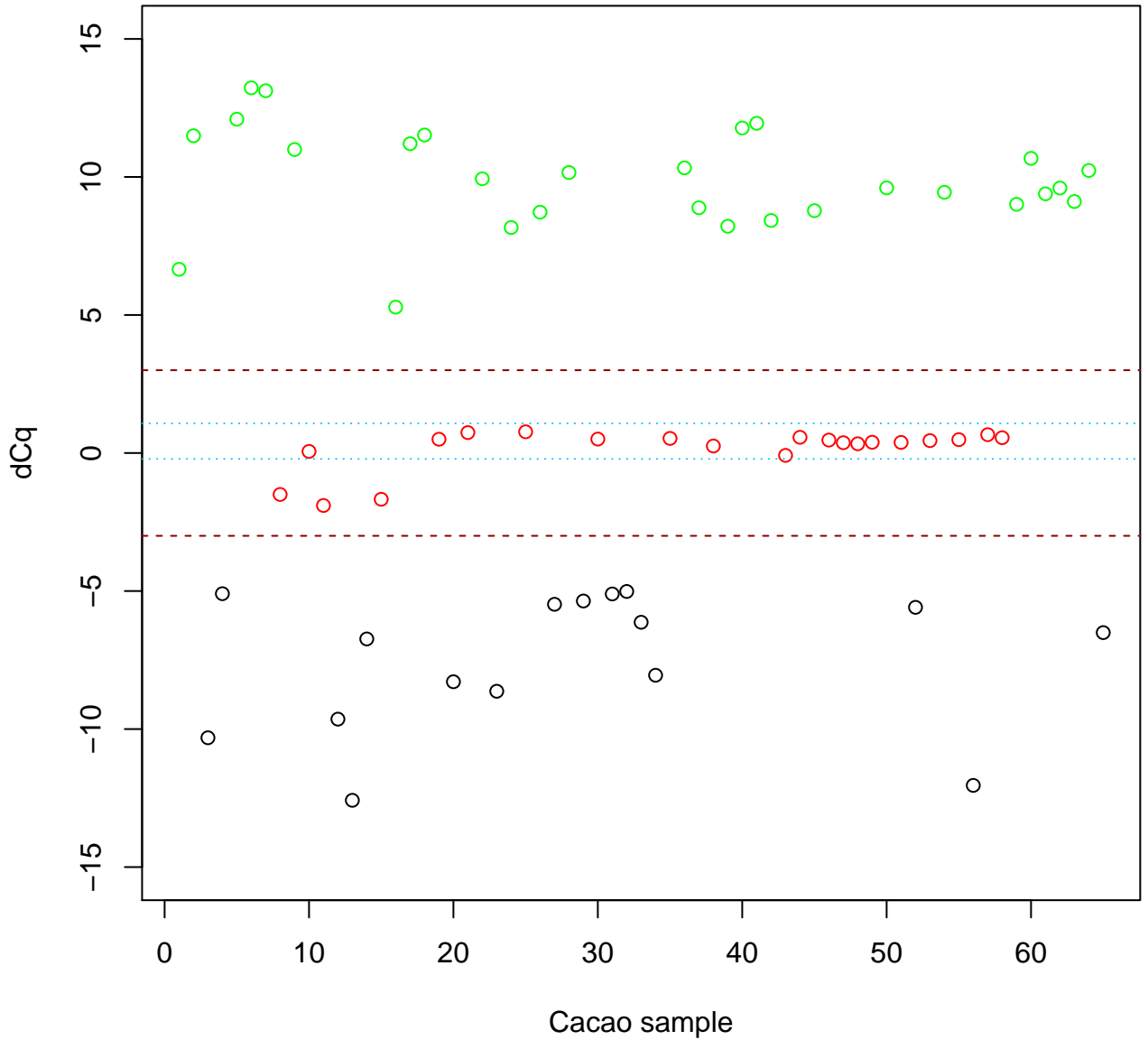
TcSNP1111



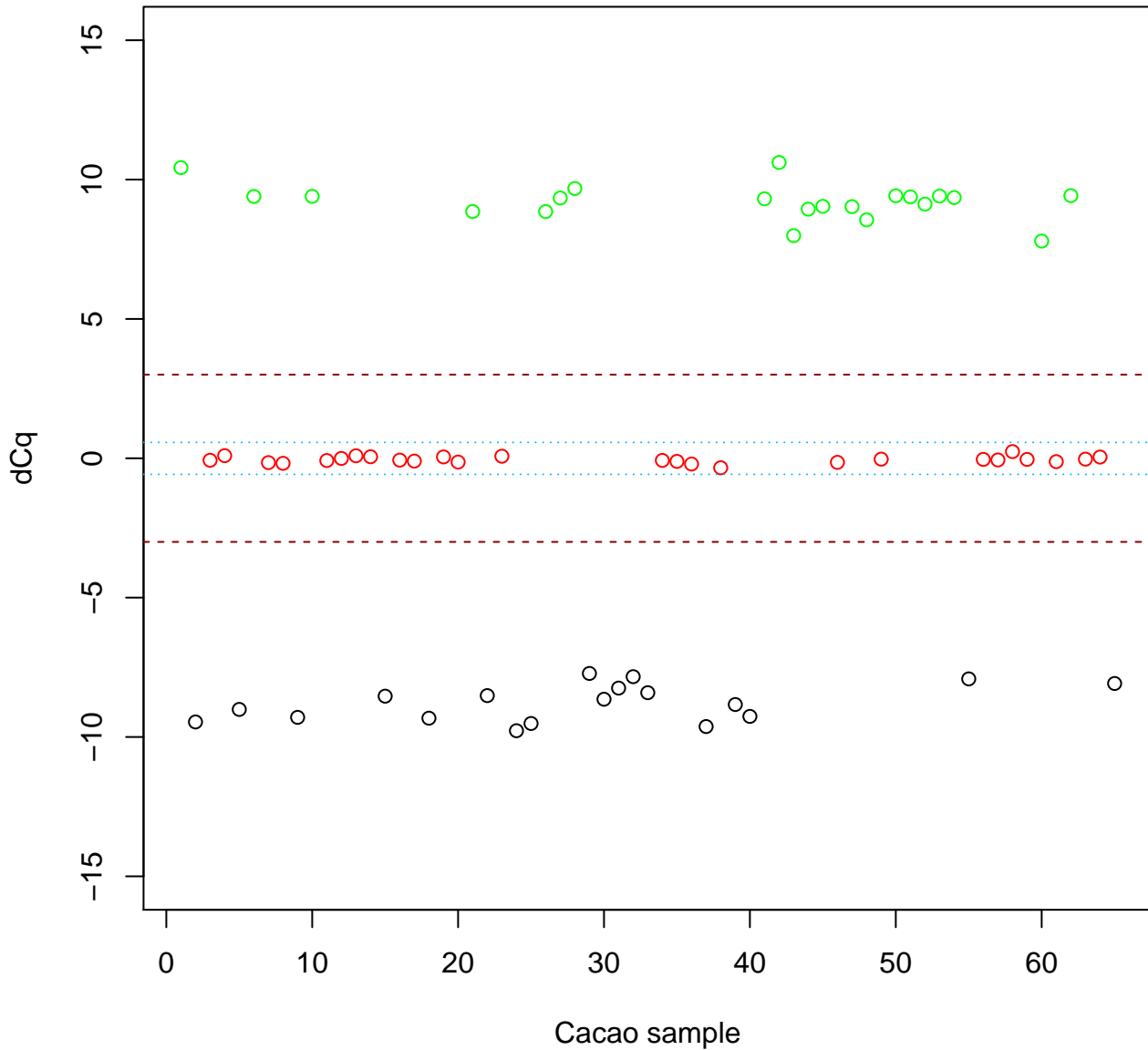
TcSNP1126



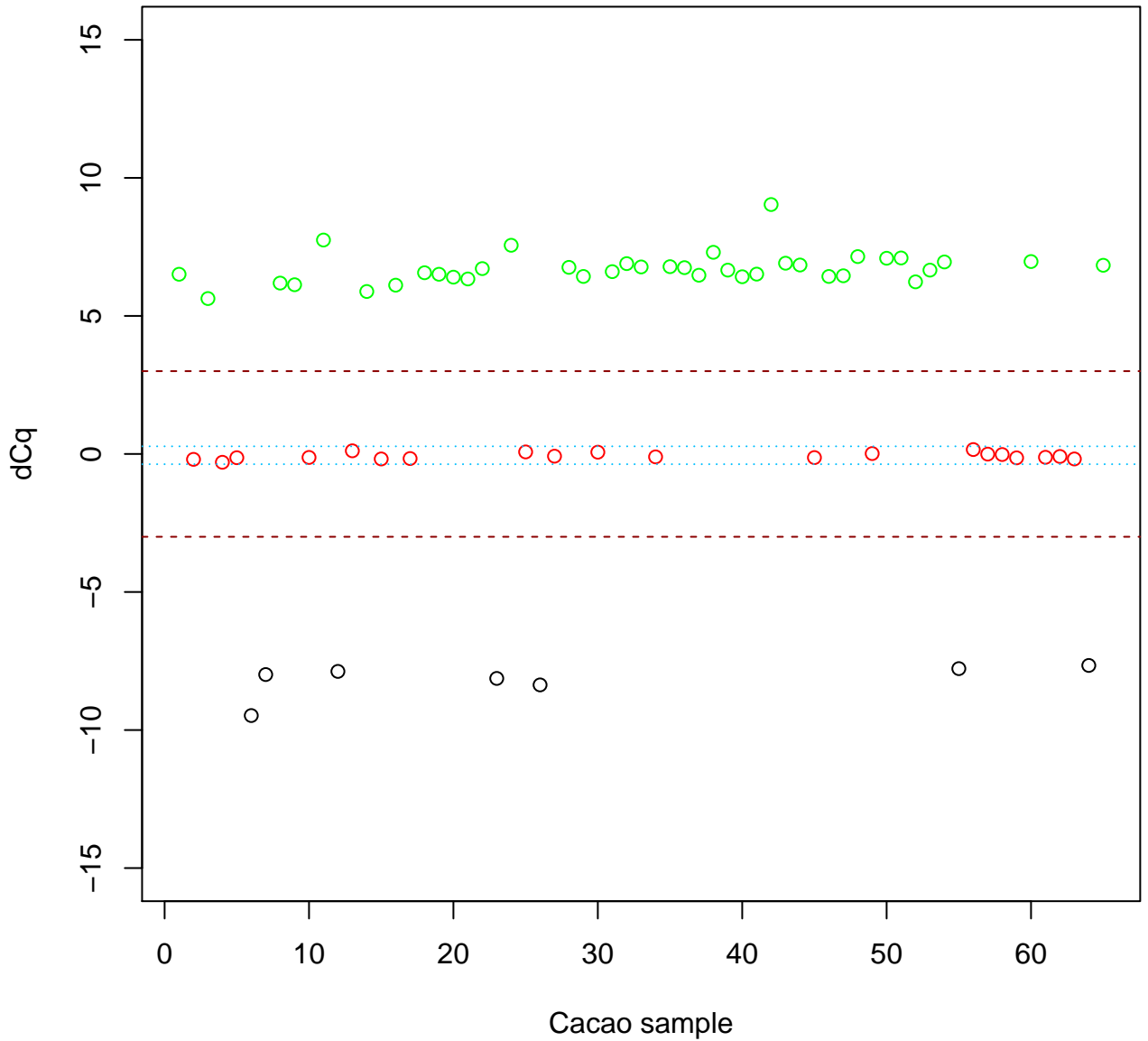
TcSNP1280



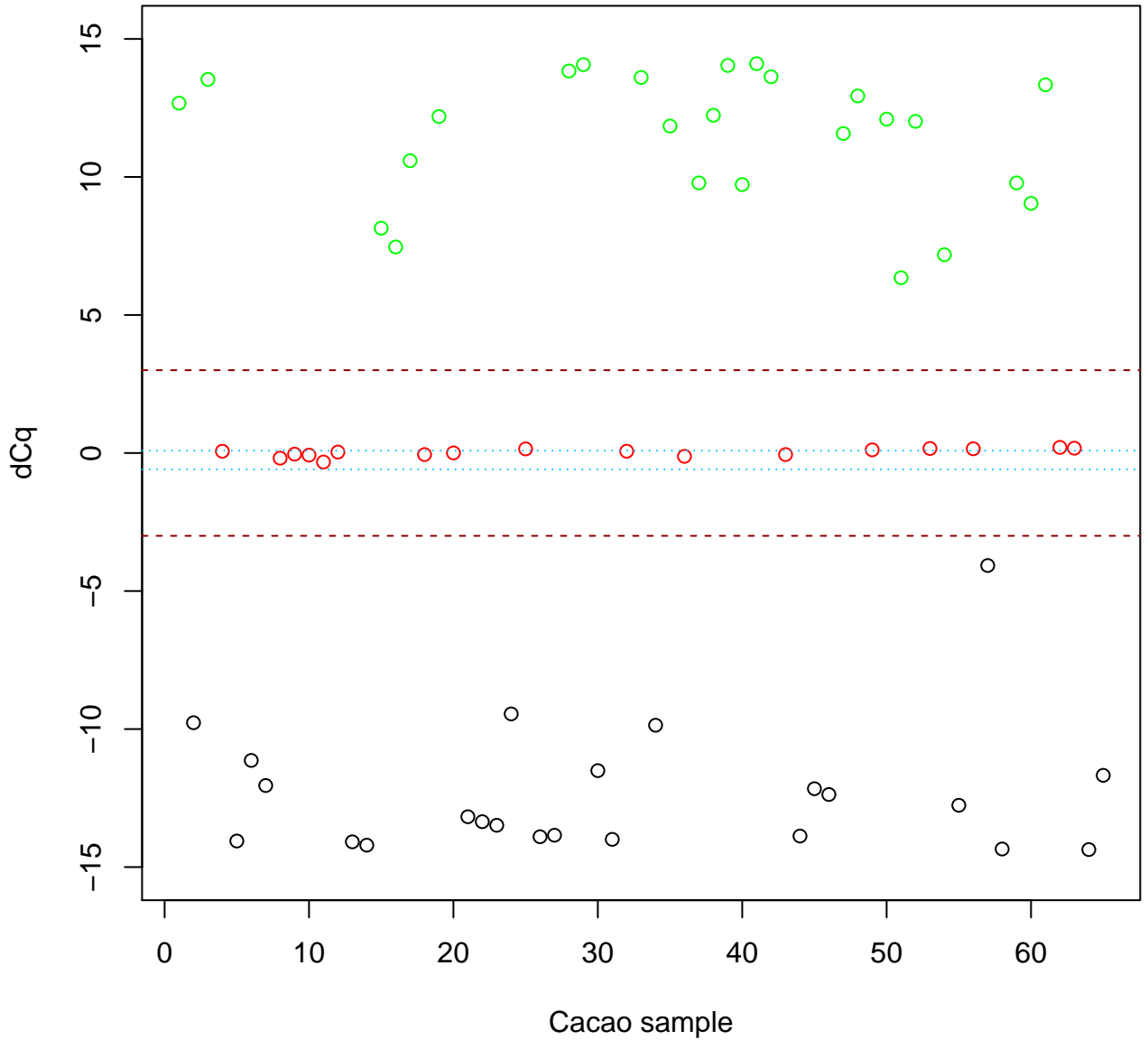
TcSNP1331



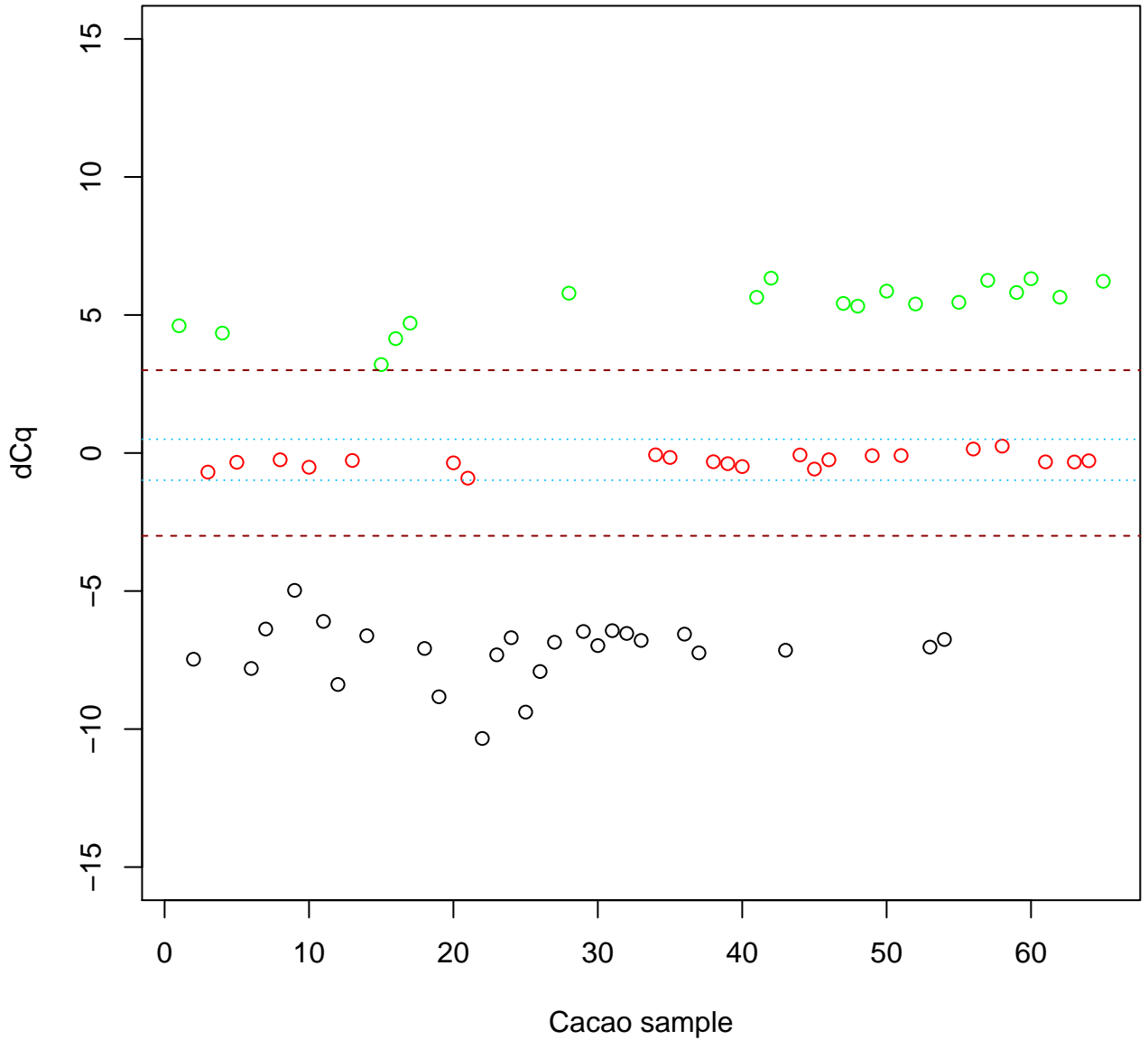
TcSNP1439



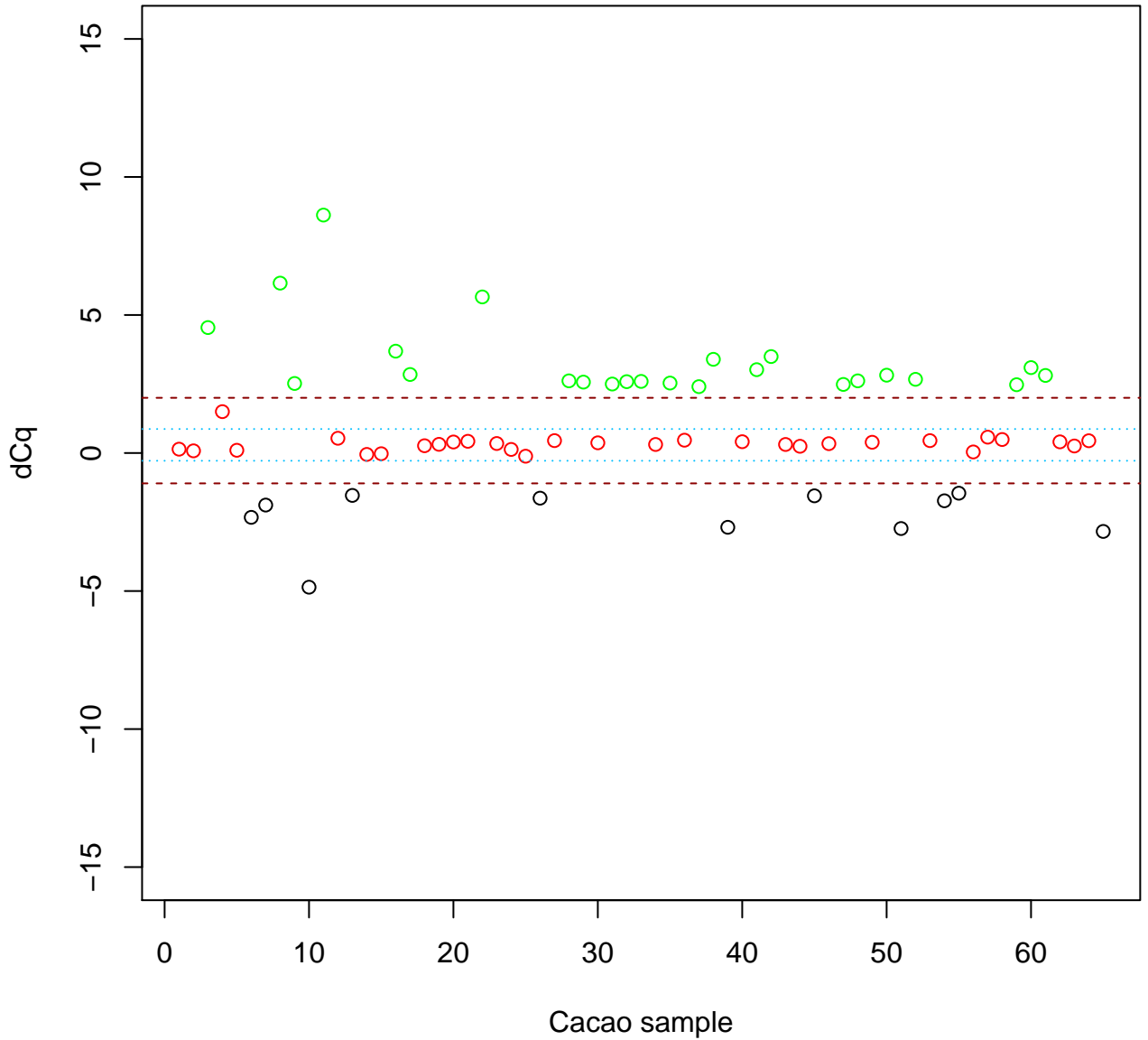
TcSNP1458



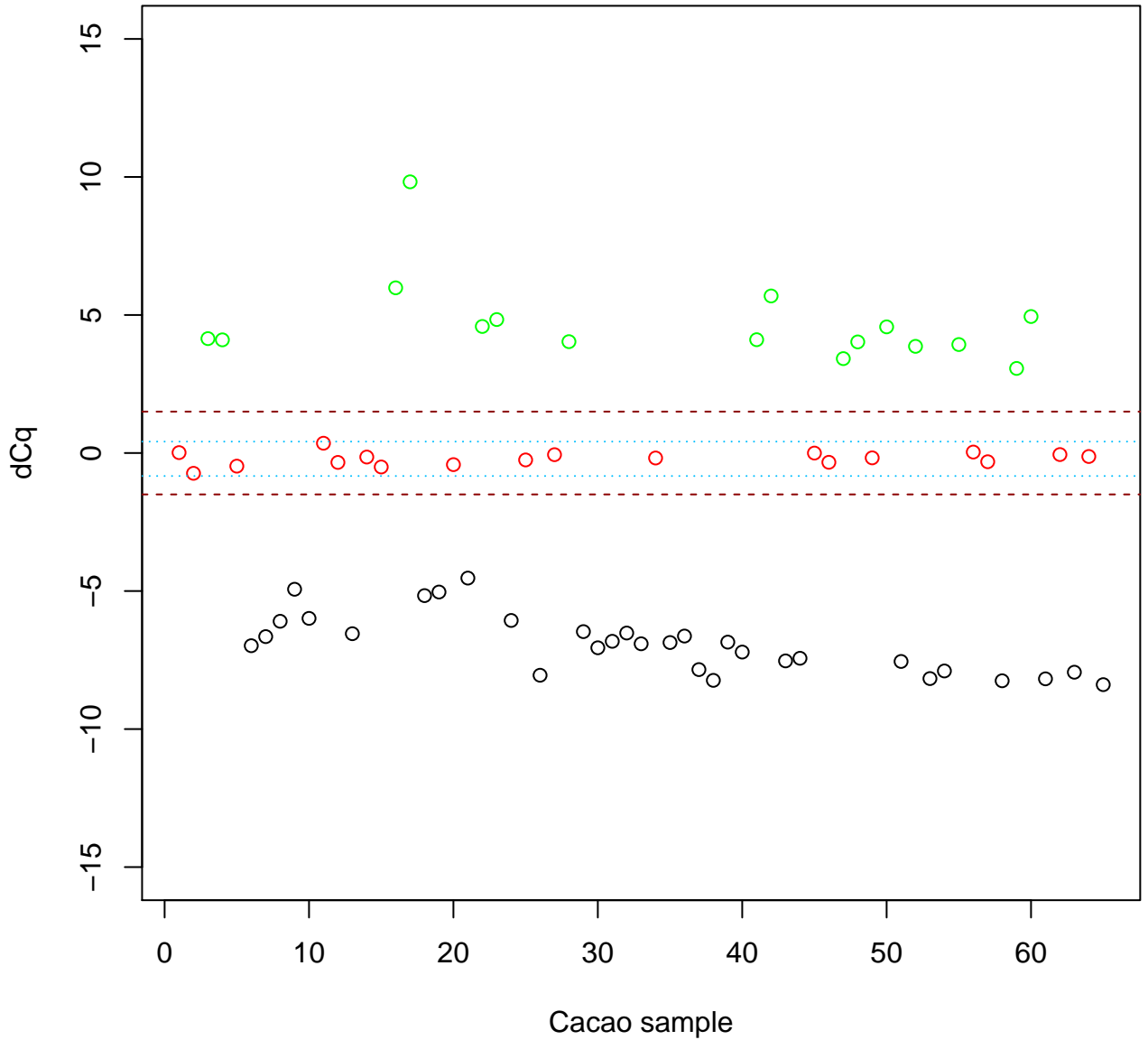
Tcm002s00644224



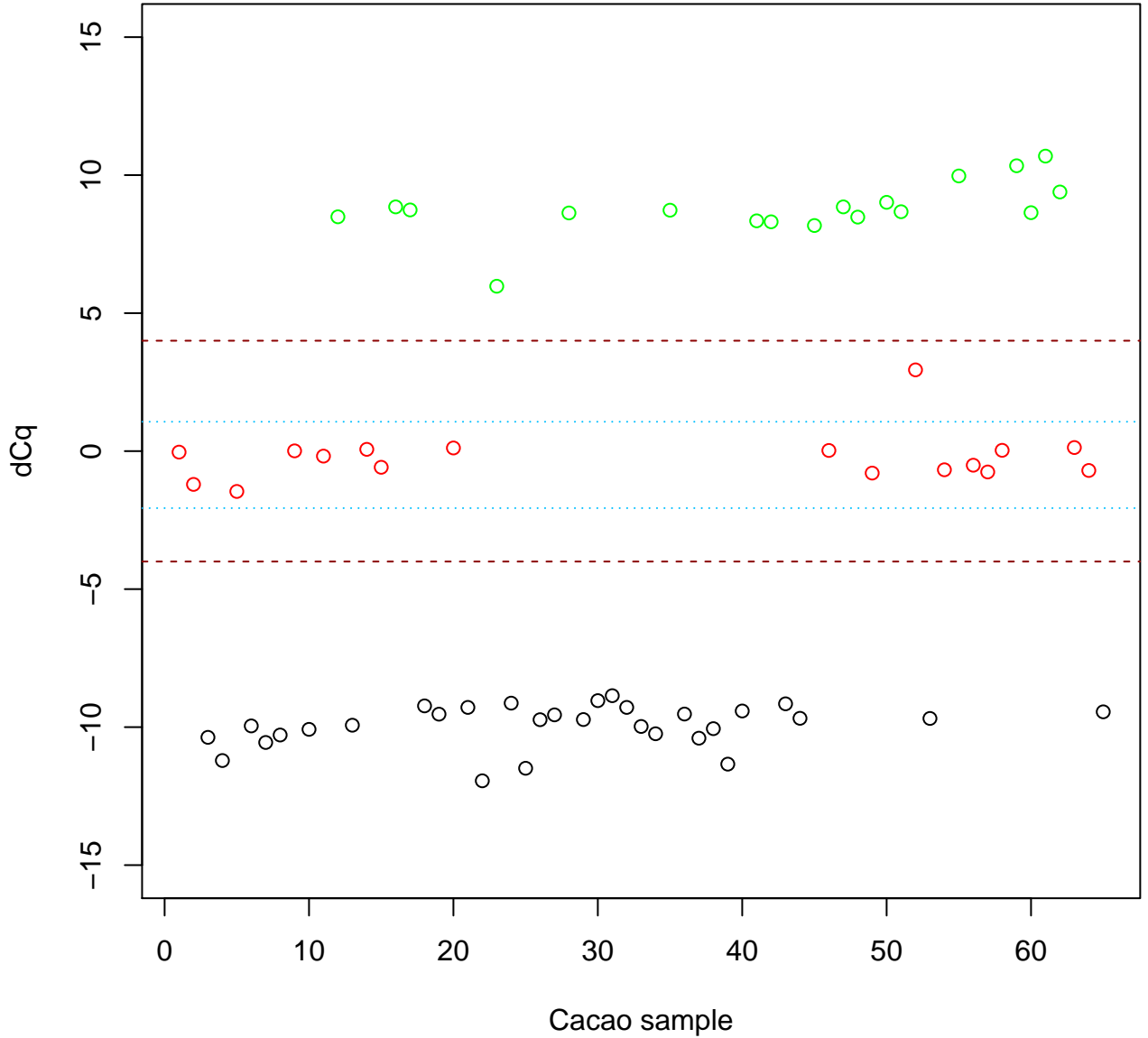
Tcm002s29938429



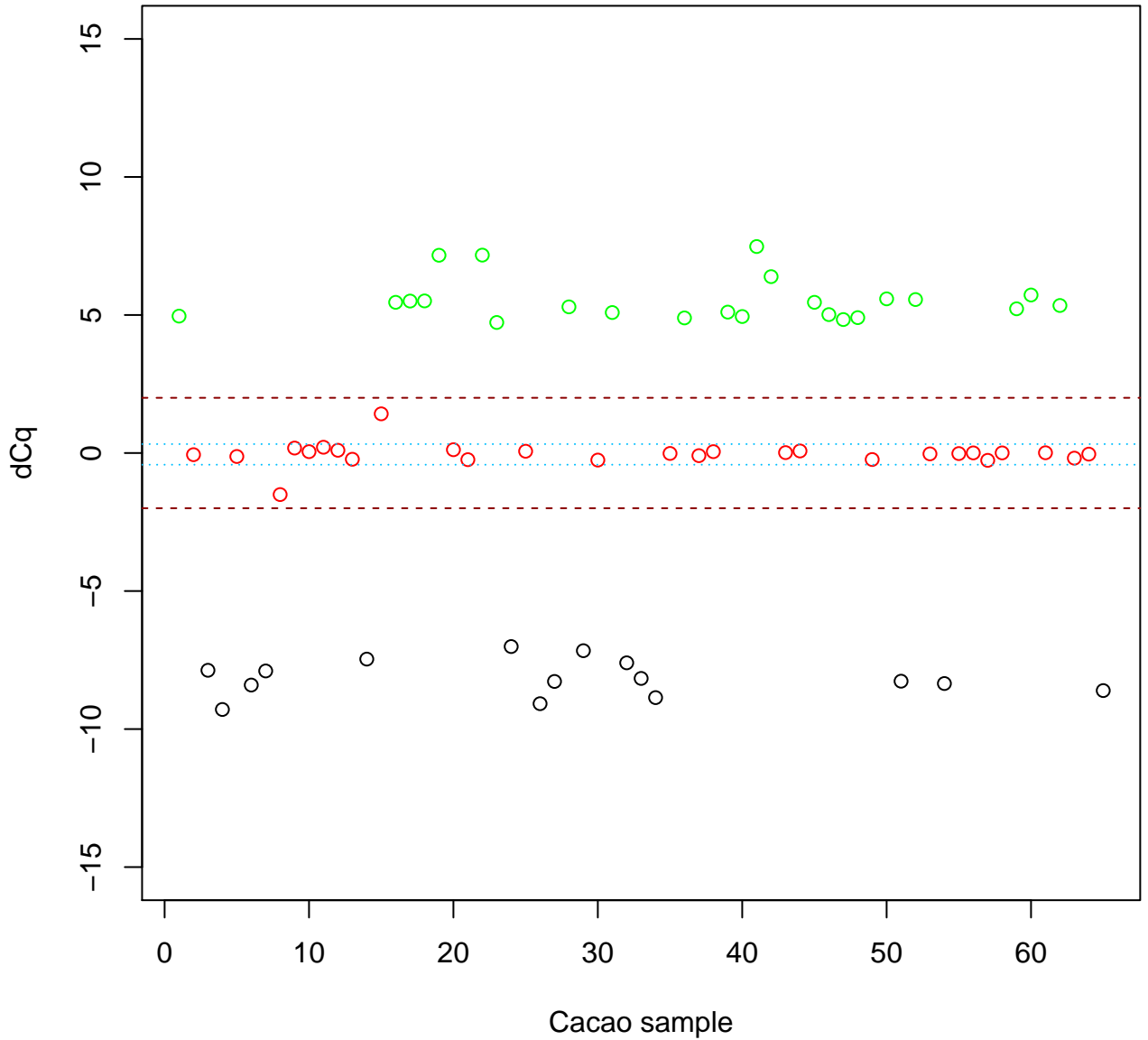
Tcm002s34015437



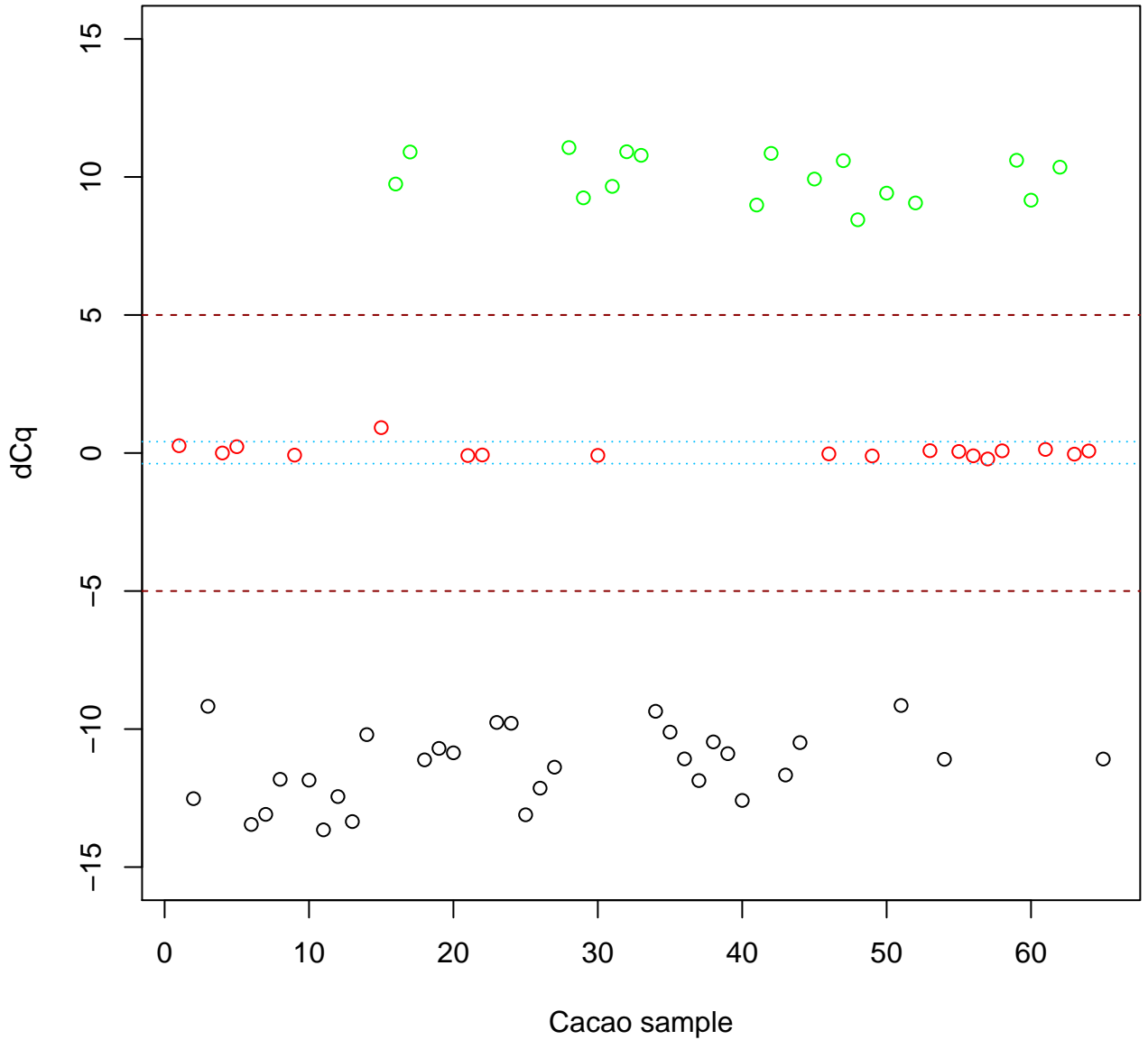
Tcm003s05554949



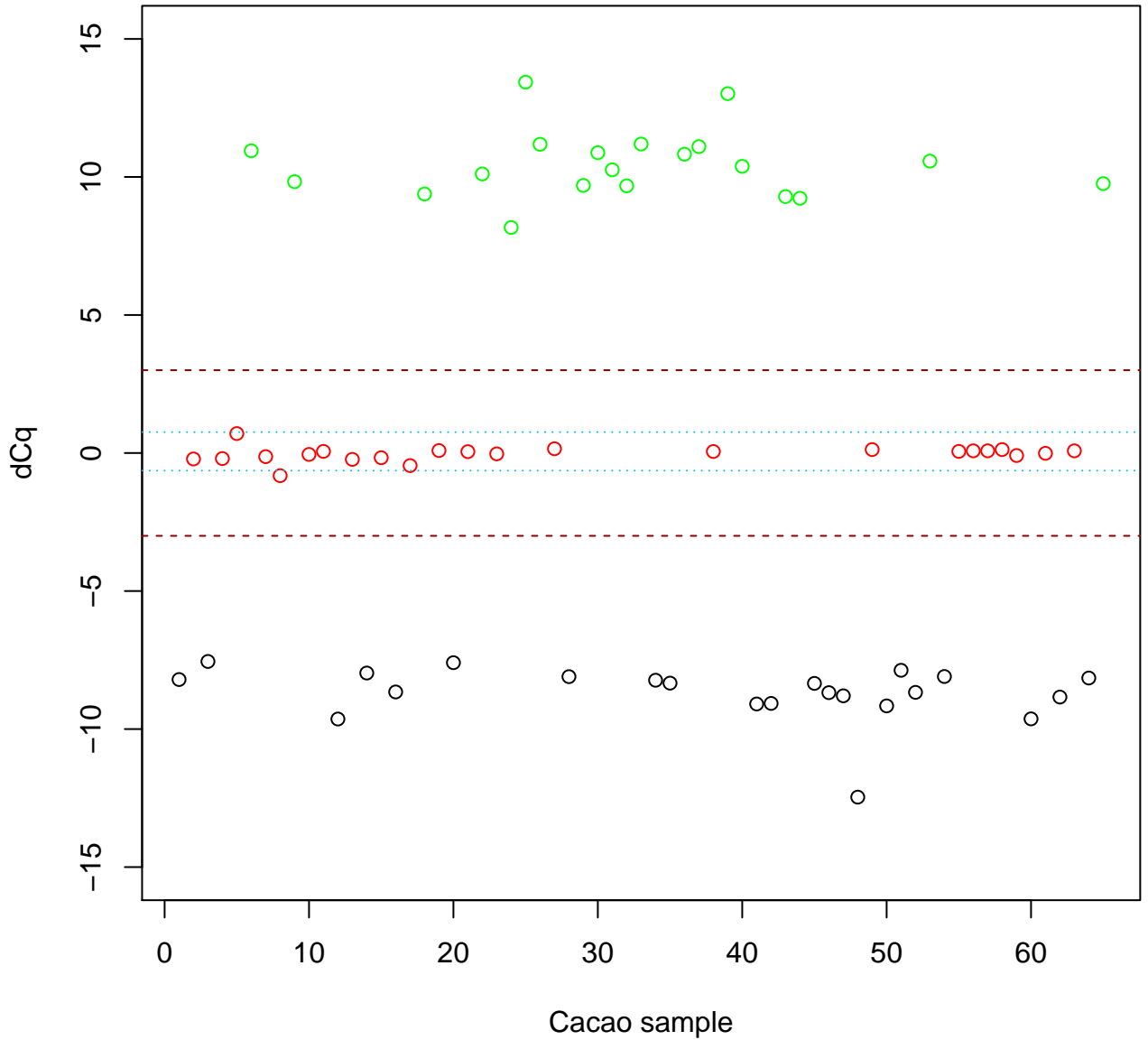
Tcm003s12502217



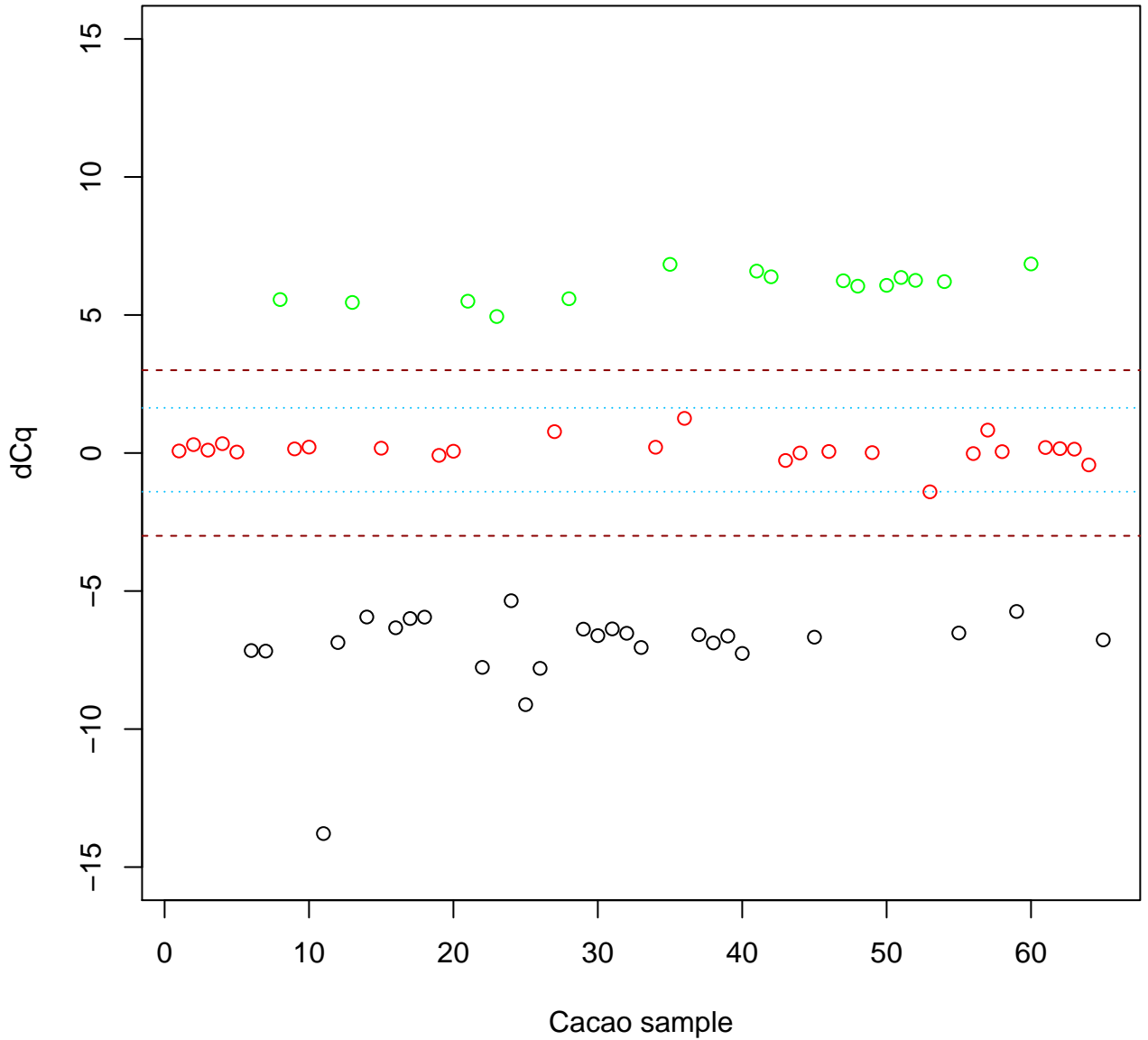
Tcm003s20315420



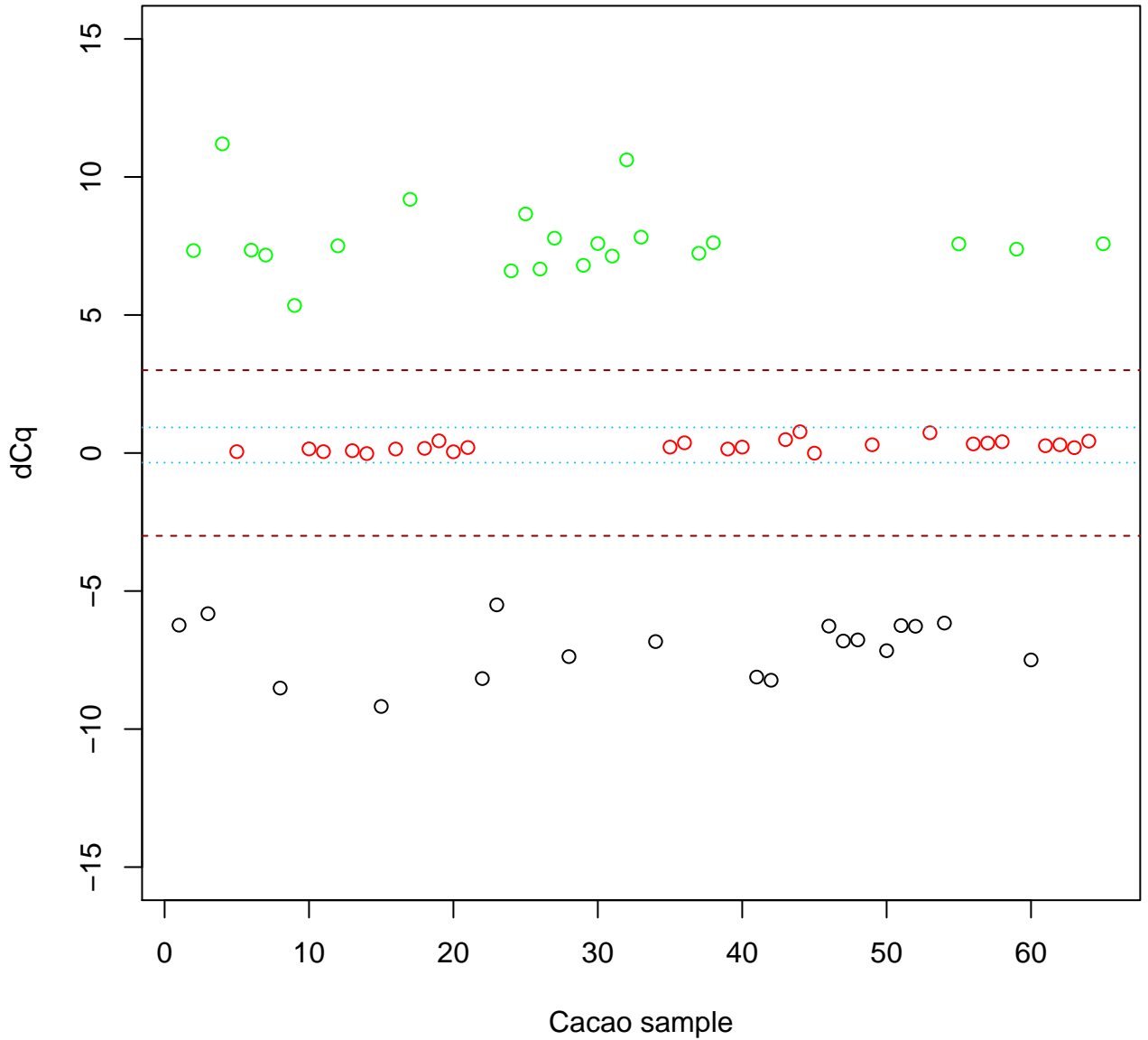
Tcm003s27807955



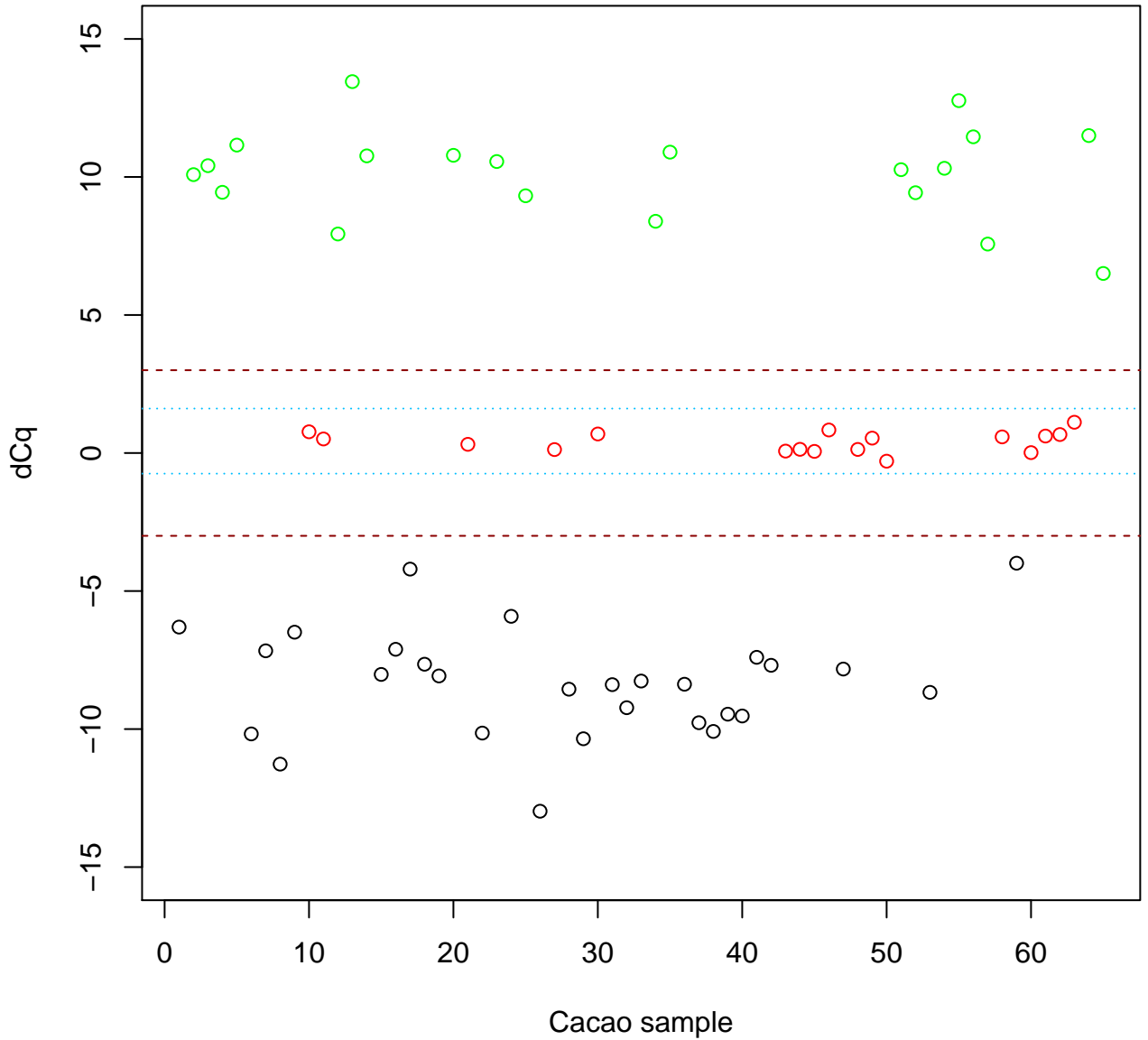
Tcm006s26507164



Tcm008s17168944



Tcm009s28255143



Tcm009s41415628

