

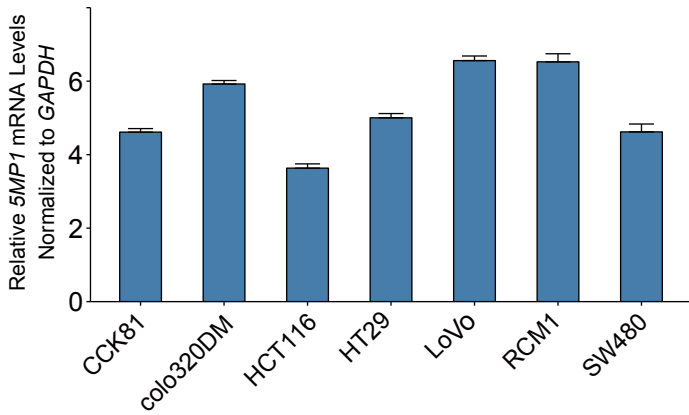
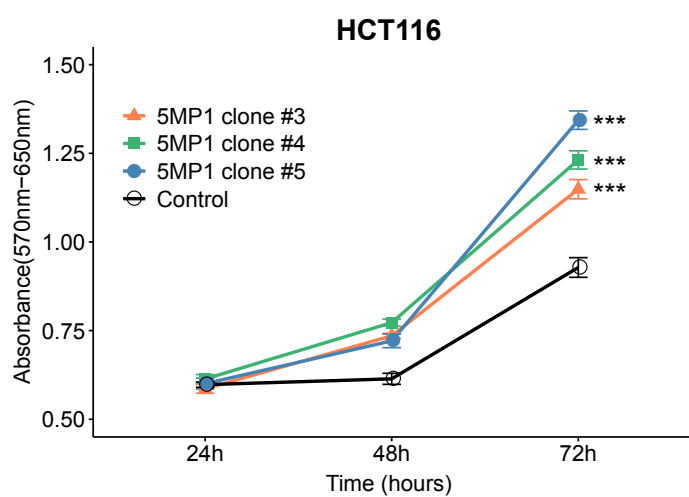
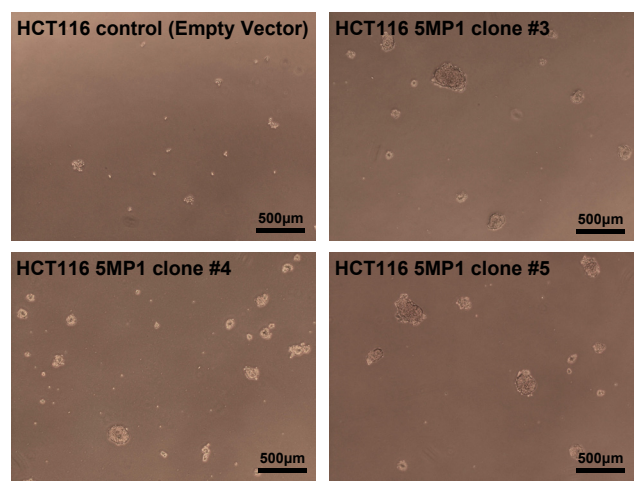
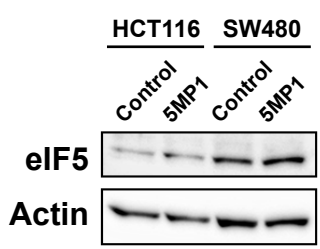
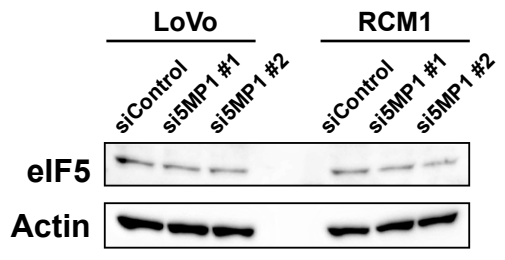
a**b****c****d****e**

Figure S3. Expression levels of 5MP1 and eIF5 and the effect of 5MP1 overexpression in CRC cell lines. Related to Figure2. (a) Relative 5MP1 mRNA expression levels measured by qRT-PCR in CRC cell lines, normalized to GAPDH mRNA expression. Data represent the mean \pm SD of three independent experiments. (b) Proliferation curves of 5MP1-overexpressed HCT116 cells and control cells measured by MTT assays. (***) $p < 0.001$; Dunnett-test was used to adjust for multiple comparisons. Data represent mean \pm SEM ($n = 9$ for each group). (c) Representative images of oncospheres derived from 5MP1-overexpressed HCT116 cells and control cells. (d) Western blot of eIF5 in control cells and 5MP1-overexpressed cells. Actin was used as the loading control (e) Western blot of eIF5 in control cells and siRNA-mediated 5MP1-knockdown cells. Actin was used as the loading control.