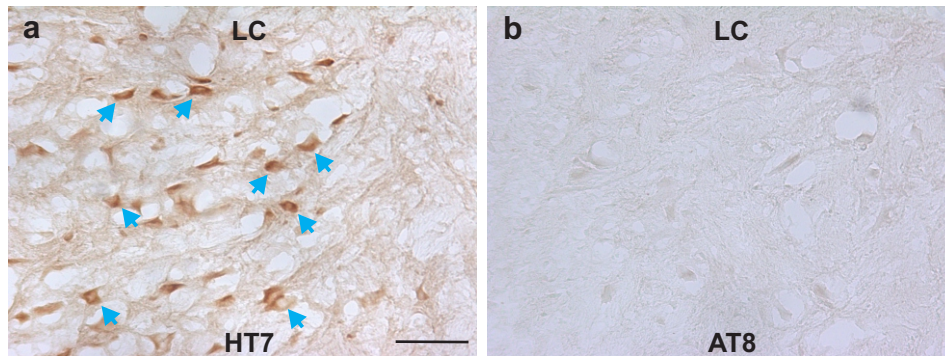


## Additional File 4



**AT8 antibody failed in htauE14 pseudophosphorylated tau tissue despite human tau expression indexed by HT7**

**a.** An example of HT7 staining in the locus coeruleus (LC) of a TH-CRE rat 3-weeks following htauE14-AAV infusion. Arrows indicate HT7<sup>+</sup> cells. **b.** An adjacent LC slice showing no AT8 staining. Scale bar, 50  $\mu$ m.