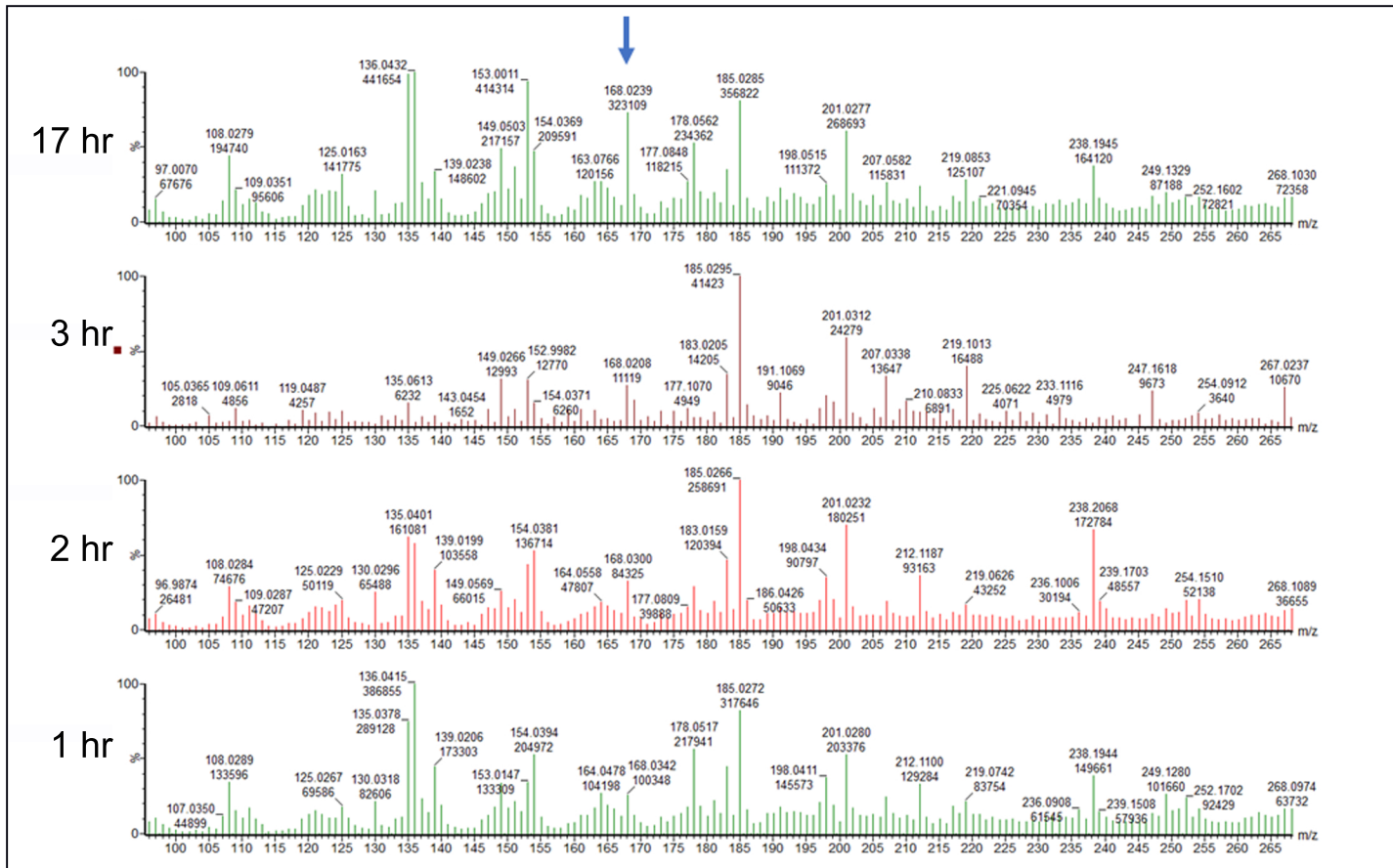
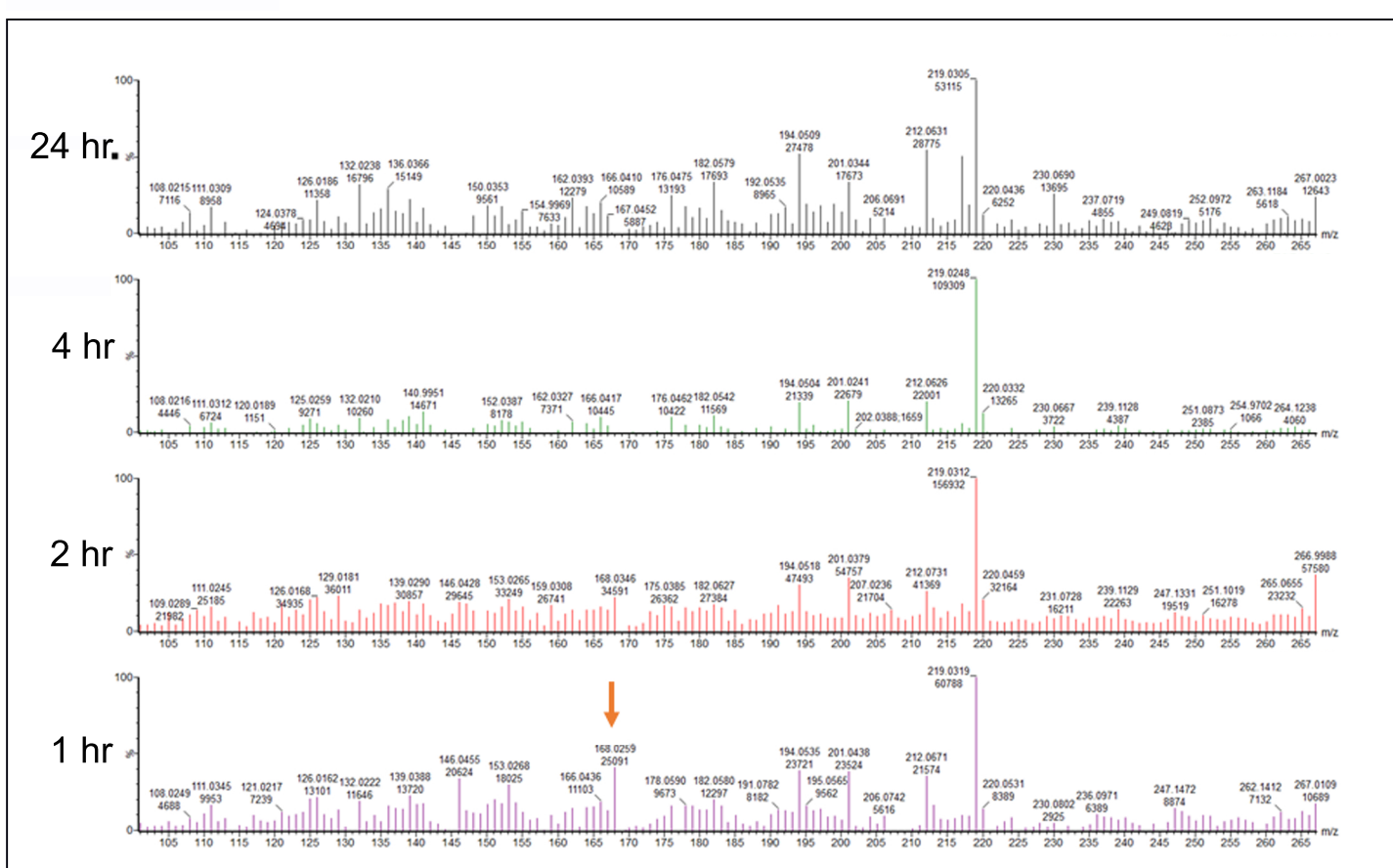


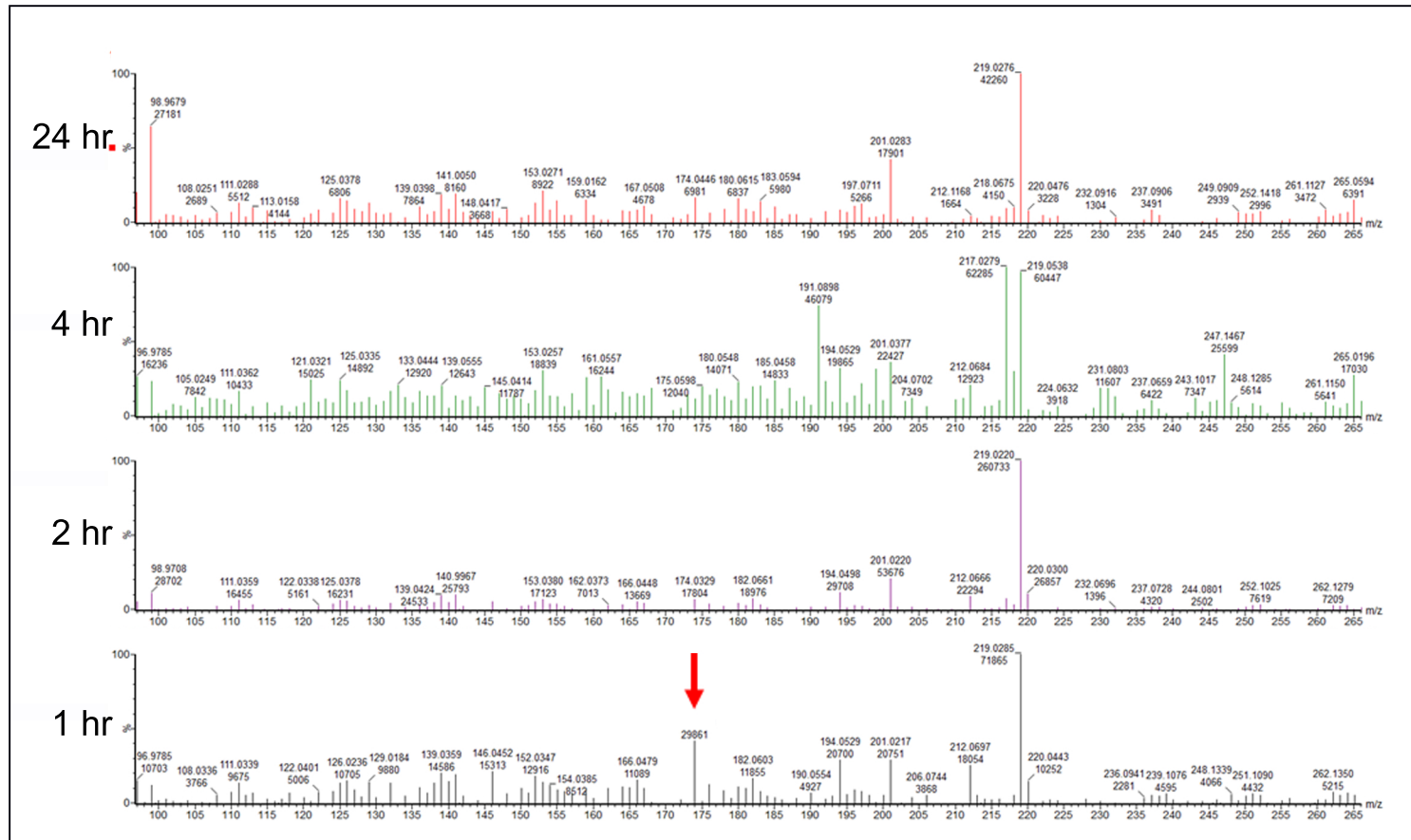
A



B



C



D

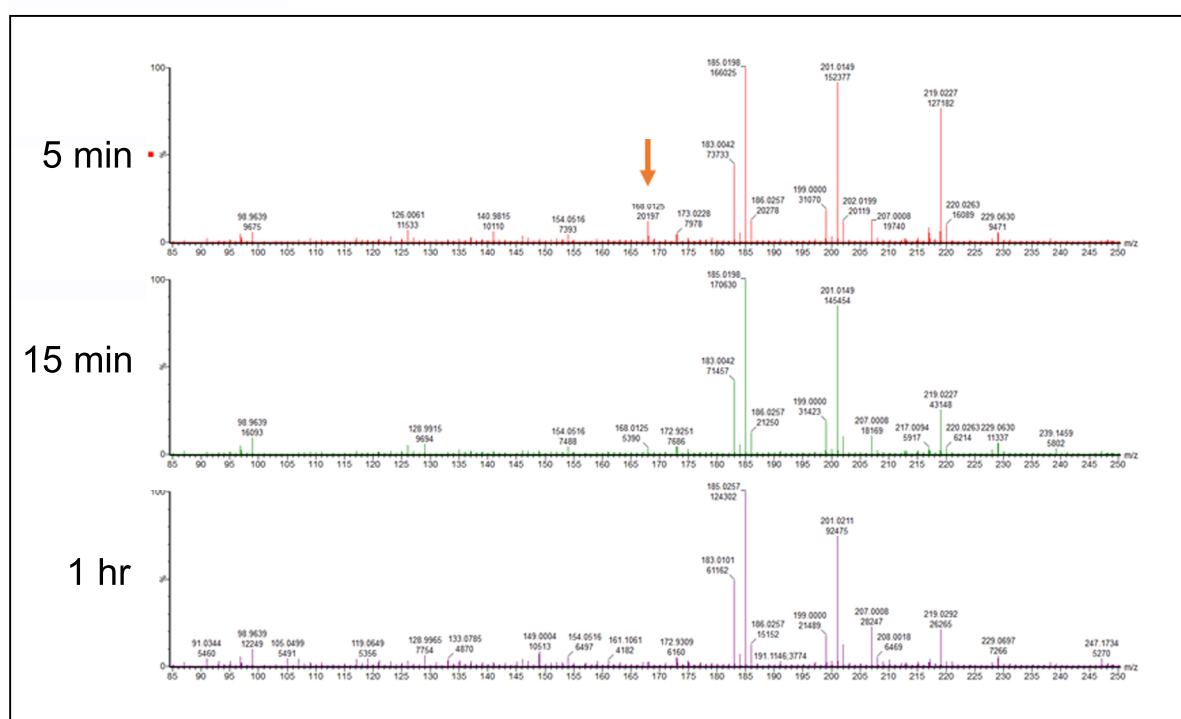


Fig. S6: A. ASAP-MS representative spectra of *S. cerevisiae* lysates incubated with vanillic acid for 1, 2, 3, or 17 hours. Blue arrow indicates integrated peak of interest for results displayed in Fig. 4C. B. ASAP-MS representative chromatogram of *P. chrysosporium* lysates incubated with vanillic acid for 1, 2, 4, or 24 hours. Orange arrow indicates integrated peak of interest for results displayed in Fig. 4B. C. ASAP-MS representative chromatogram of *P. chrysosporium* lysates incubated with ¹³C labeled vanillic acid for 1, 2, 4, or 24 hours. Red arrow indicates integrated peak of interest for results displayed in Fig. 4B. D. ASAP-MS representative chromatogram of *P. chrysosporium* lysates incubated with vanillic acid for 5, 15, and 60 min. Orange arrow indicates integrated peak of interest for results displayed in Fig. 4B.