

1 **Supplementary Figures**

2 **Supplemental Figure 1: Treatment with 2AP during indeterminate stage significantly reduced ER**  
3 **stress in the myocardium of infected mice.**

4 (a) IHC analysis demonstrated a significant decrease in the levels of ER stress marker BIP in the  
5 hearts of infected mice treated with 2AP compared to infected untreated mice at 120DPI.

6 (b) IHC analysis demonstrated a significant decrease in the levels of ER stress marker pelf2 $\alpha$  in the  
7 hearts of infected mice treated with 2AP compared to infected untreated mice at 120DPI.

8 (c) IHC analysis demonstrated a significant decrease in the levels of ER stress marker CHOP in the  
9 hearts of infected mice treated with 2AP compared to infected untreated mice at 120DPI.

10 (d) IHC images of BIP, pELF2 $\alpha$  and CHOP staining were quantified and represented as bar graph.  
11 Five images from each section were quantified using NIH image-J program. Bars represent mean values  
12 of the data with SEM as vertical lines.

13 Statistical significance compared to uninfected untreated mice is represented by \* ( $p \leq 0.05$ ), \*\* ( $p \leq$   
14  $0.01$ ) or \*\*\* ( $p \leq 0.001$ ). Statistical significance compared to infected untreated mice is represented by #  
15 ( $p \leq 0.05$ ), ## ( $p \leq 0.01$ ) or ### ( $p \leq 0.001$ ).

16

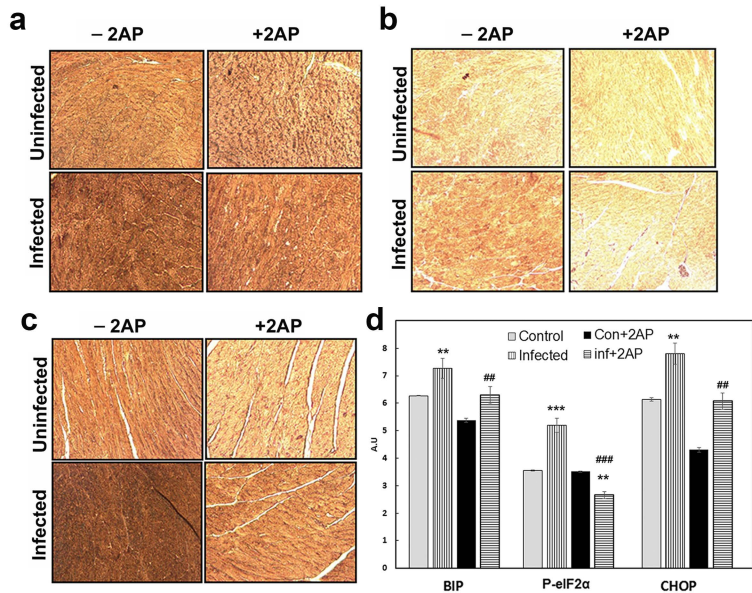
17 **Supplemental Figure 2: Histology of the myocardium of mice during chronic stages of infection**  
18 **(additional images, n=8).**

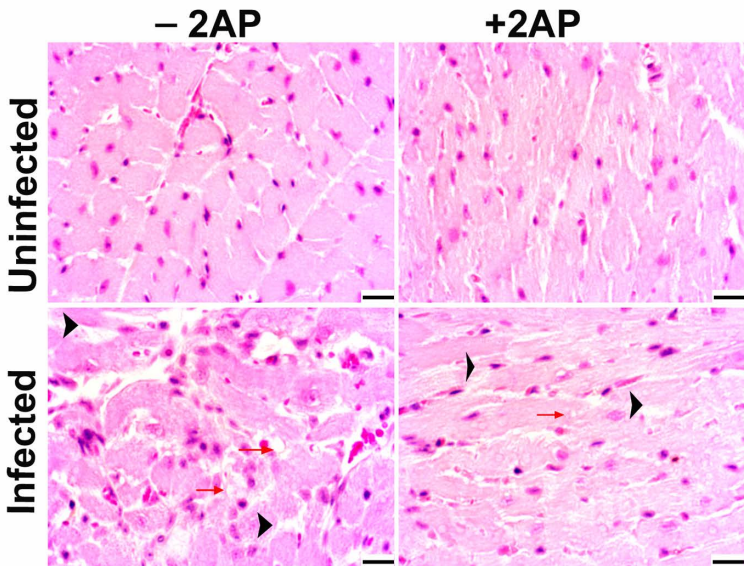
19 H&E staining displayed significantly more damage (degenerating cardiac muscle fibre – black arrow head  
20 and presence of adipocytes or lipid granules – read long arrow) in infected (untreated) mice compared to  
21 infected 2AP treated mice at 120 DPI (bar -25um, 40X magnification).

22

23 **Supplemental Figure 3: Schematic explanation of Experimental design**

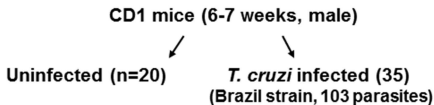
Supplemental Figure 1





# Supplemental Figure 3

## Experimental design



2- AP (100mg/Kg  
body weight)/day  
beginning from  
40DPI

Cardiac Imaging at 100DPI (n=5)

Euthanized and harvested tissue samples at 120DPI (n=10)  
Histological, biochemical and immunological analysis