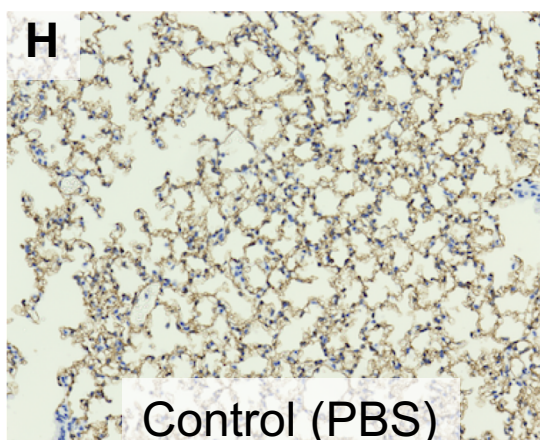
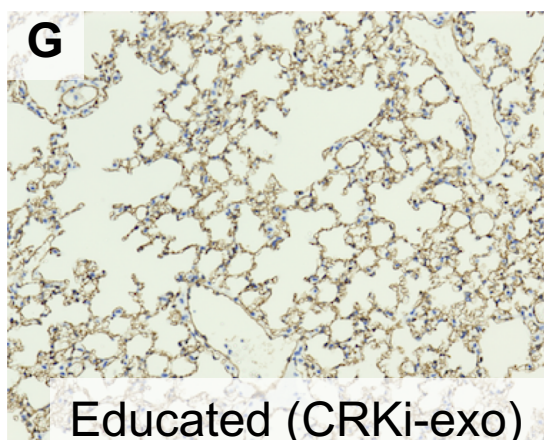
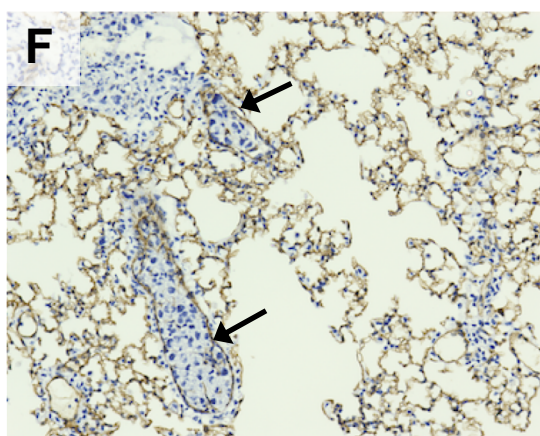
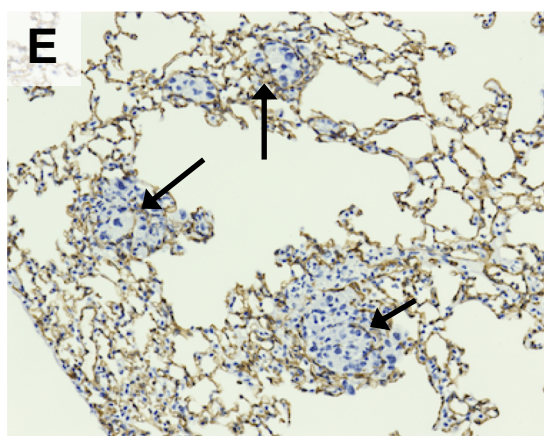
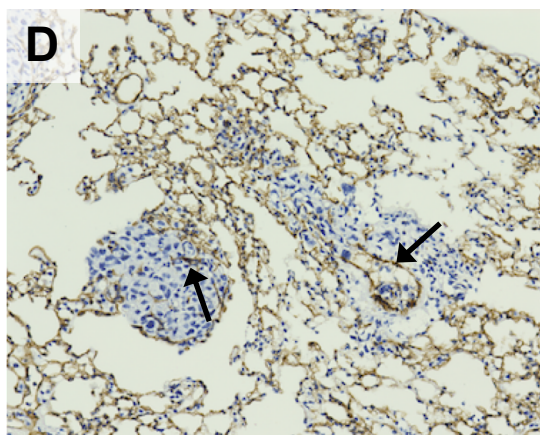
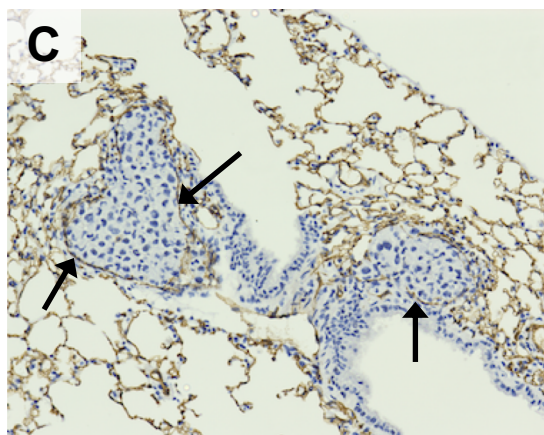
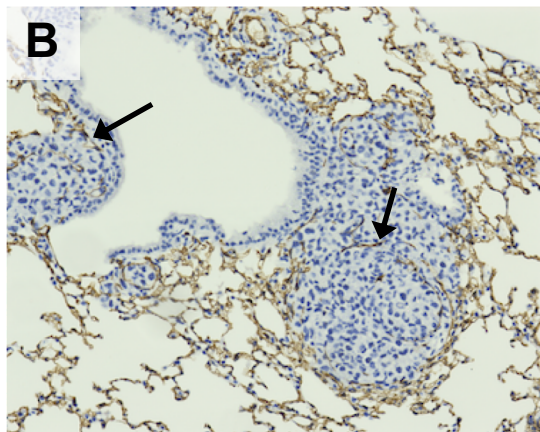
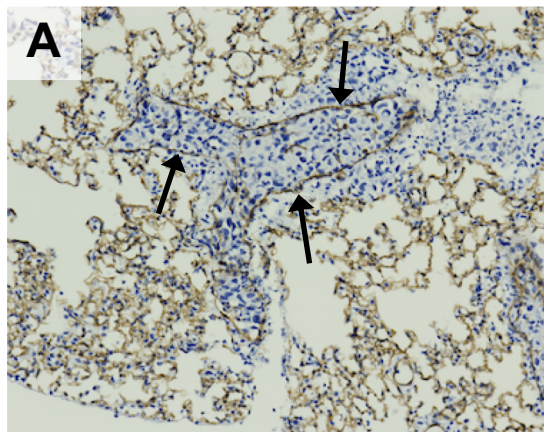


Supporting Figure 5.

Educated (Empty-exo)



Educated (CRKi-exo)

Control (PBS)

## Figure S5

Aggressive vascular invasion and angiogenesis in lung of mice educated with UM-UC-3-derived exosomes. After exosome education as described in Figure 6A, UM-UC-3 cells ( $1 \times 10^6$  cells) were injected in NOD/ShiJic-scid Jcl mice *via* the tail vein. The metastatic lung tissues were excised and subjected to immunostaining for CD31. Lung of the mice educated with Empty-exos (A-F), CRKi-exos (G), and without exo (H). Arrows indicate aggressive vascular invasion and angiogenesis surrounding the tumors.