

Conditional loss of ERK1 and ERK2 results in abnormal placentation and delayed parturition in the mouse

Jessica L. Brown¹, Jennifer L. Sones^{1,2}, Cynthia N. Angulo¹, Keelin Abbott¹, Andrew D. Miller¹, Ulrich Boehm³ and Mark S. Roberson¹

¹Dept. Biomedical Science, College of Veterinary Medicine, Cornell University, Ithaca, NY

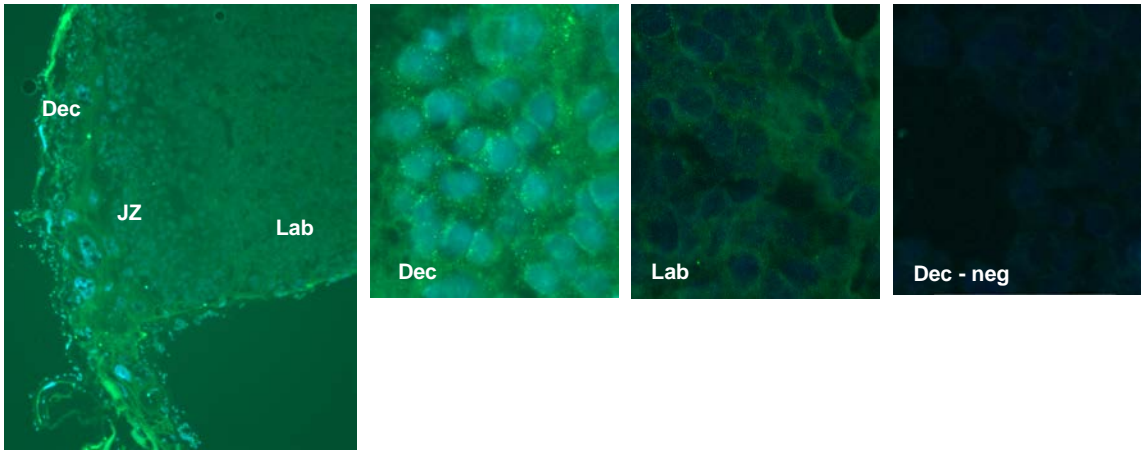
²Dept. Veterinary Clinical Sciences, School of Veterinary Medicine, Louisiana State University, Baton Rouge, LA

³Experimental Pharmacology, Center for Molecular Signaling (PZMS), Saarland University School of Medicine, Homburg, Germany

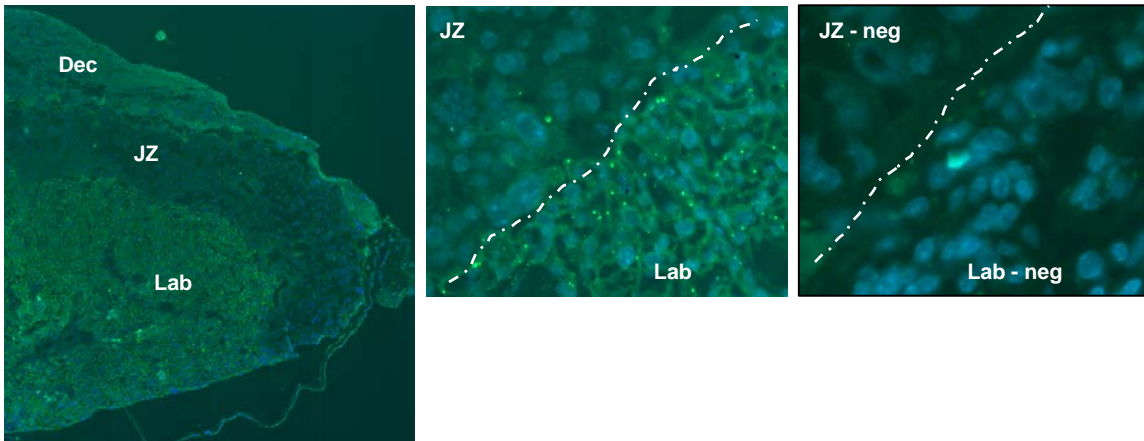
Supplementary Figures

Supplemental Figure 1

A. e12.5

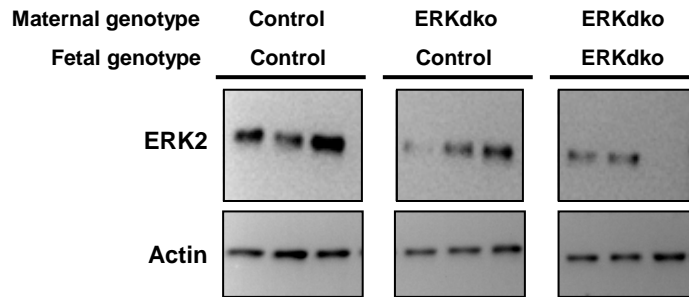


B. e18.5

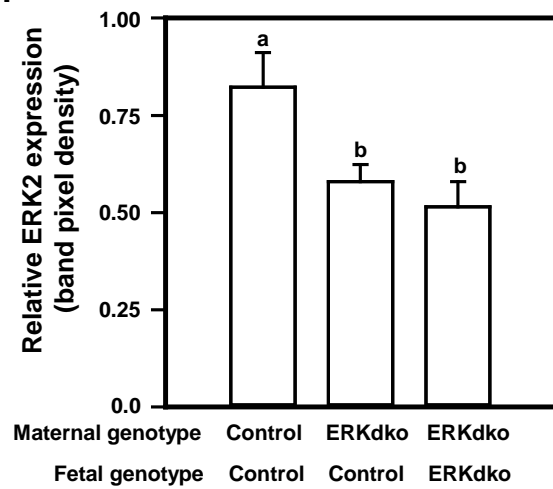


Supplemental Figure 2

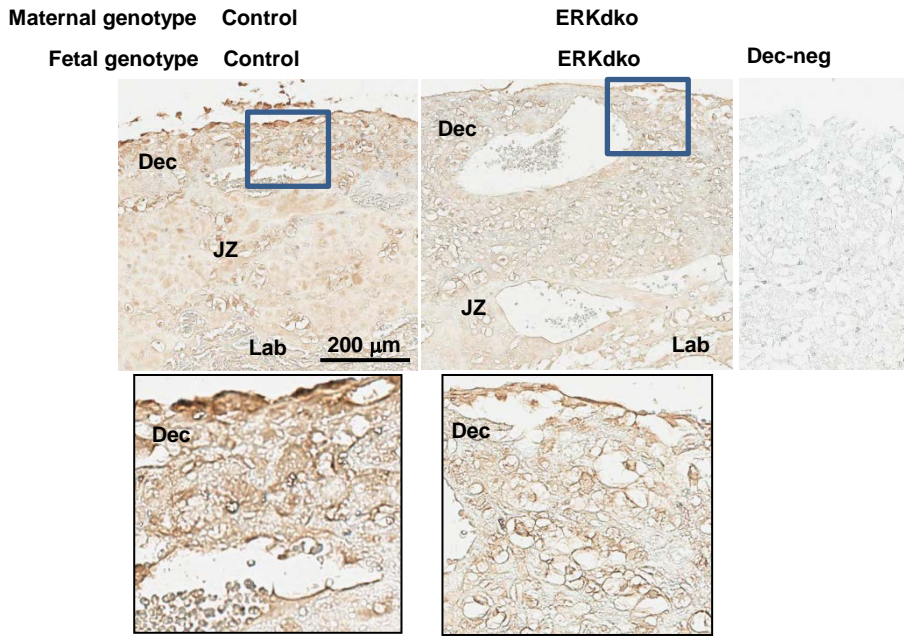
A.



B.



Supplemental Figure 3



Supplemental Figure 4 - Uncropped western blot gels from Supplementary Figure 2A

