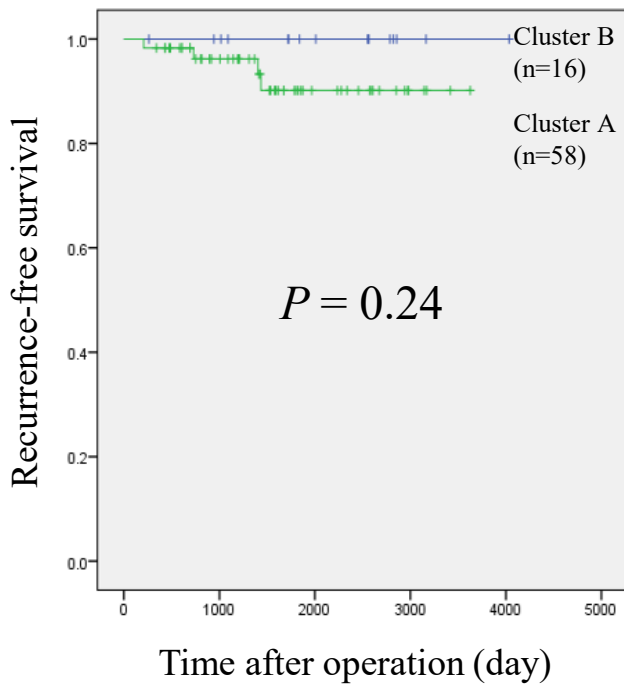
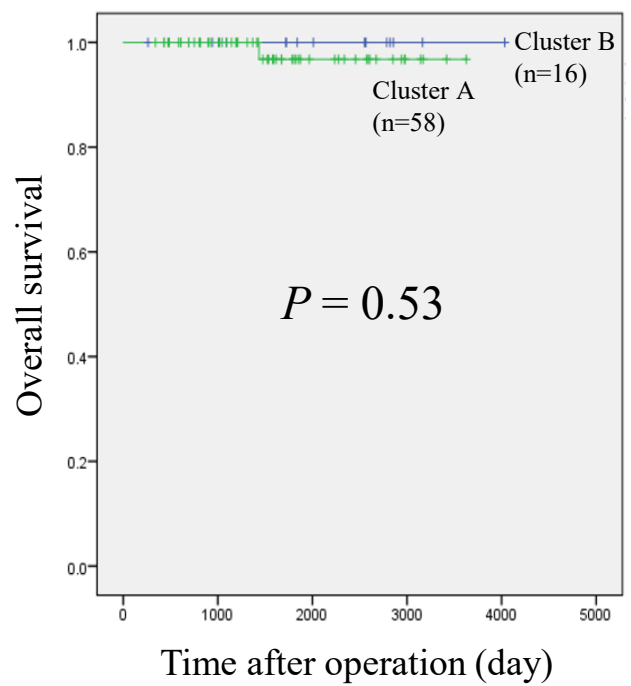


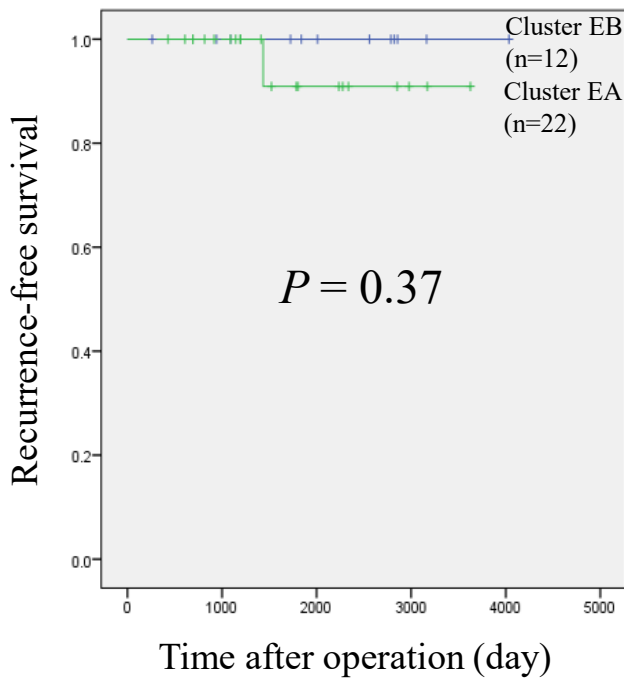
A



B



C



Supplementary Fig. 2. Kaplan-Meier survival curves of patients belonging to Clusters A and B (panels A and B) and Clusters EA and EB (panel C). The period covered ranged from 263 to 4,034 days (median, 1,605 days). Although the cancer-free (panel A) and overall (panel B) survival rates of patients belonging to Cluster A tended to be lower than those in Cluster B, such differences did not reach statistically significant levels (log-rank test), probably due to the small number of deaths or recurrences. The cancer-free survival rate of patients belonging to Cluster EA tended to be lower than that of patients in Cluster EB, but the difference did not reach a statistically significant level (log-rank test), probably due to the small number of recurrent cases (panel C). Since the overall survival rate was 100% in both Clusters EA and EB, log-rank test was not performed.