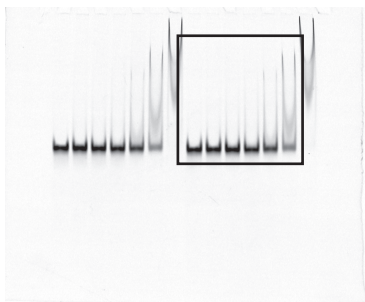
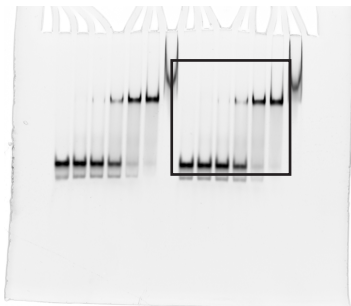


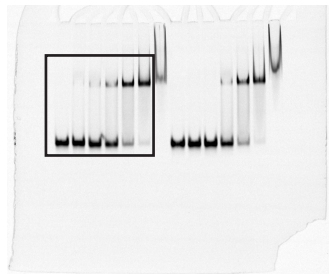
Extended Data Fig. 3j : Undamaged



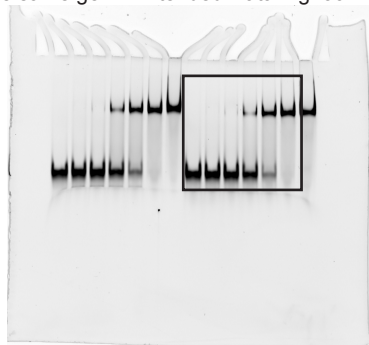
Extended Data Fig. 3j : 6-4PP



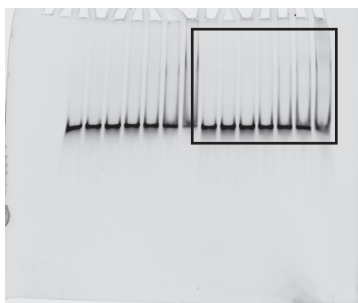
Extended Data Fig. 3j : CPD



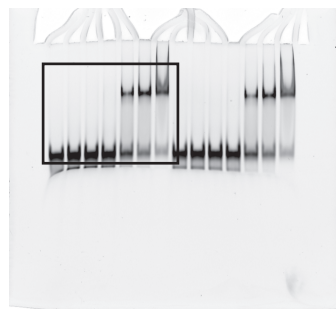
Extended Data Fig. 3j : THF2
(The same gel in Extended Data Fig. 5c : -1)



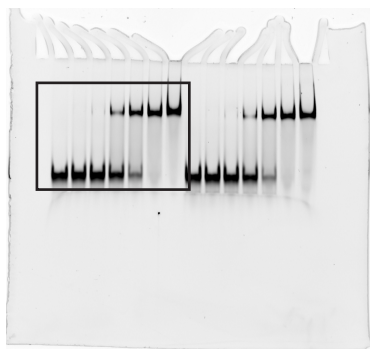
Extended Data Fig. 5c : -5*



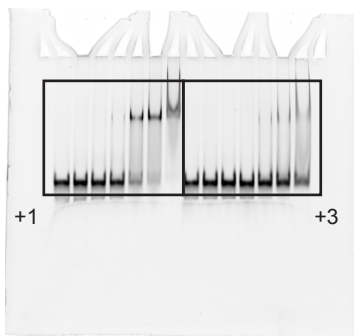
Extended Data Fig. 5c : -3



Extended Data Fig. 5c : -1
(The same gel in Extended Data Fig. 3j : THF2)



Extended Data Fig. 5c : +1 and +3



Supplementary Figure 1 | Uncropped gel scans of Electrophoretic mobility shift assays

Fluorescently labelled nucleosomes (40 nM) were mixed with UV-DDB (0, 10, 20, 40, 80, 160 and 320 nM), and incubated on ice for 30 min. Samples were analysed by electrophoresis on a 6% non-denaturing polyacrylamide gel, and bands were visualised with a Typhoon imaging analyser.