

MicroRNA-214 targets PTK6 to inhibit tumorigenic potential and increase drug sensitivity of prostate cancer cells

Patrice Cagle¹, Suryakant Niture¹, Anvesha Srivastava², Malathi Ramalinga², Rasha Aqeel², Leslimar Rios-Colon¹, Uchechukwu Chimeh¹, Simeng Suy⁴, Sean P. Collins⁴, Rajvir Dahiya⁵ and Deepak Kumar^{1,2,3*}

¹Julius L. Chambers Biomedical Biotechnology Research Institute, North Carolina Central University, Durham, NC 27707

²Cancer Research Laboratory, Division of Science and Mathematics, University of the District of Columbia, Washington, DC 20008

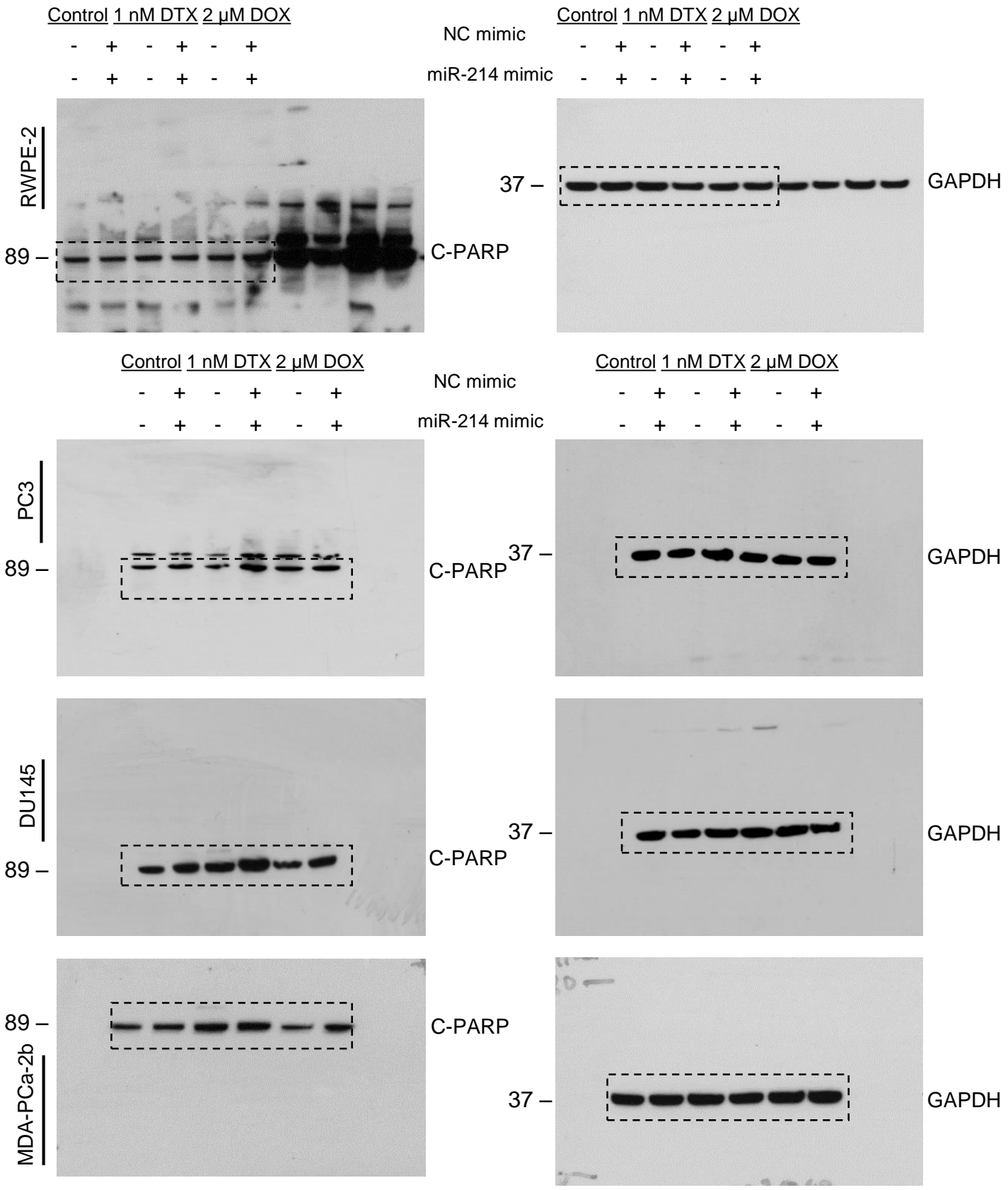
³Department of Pharmaceutical Sciences, North Carolina Central University, Durham, NC 27707

⁴Department of Radiation Medicine, Georgetown University, Washington, DC 20057

⁵VA Medical Center and University of California San Francisco CA 94121

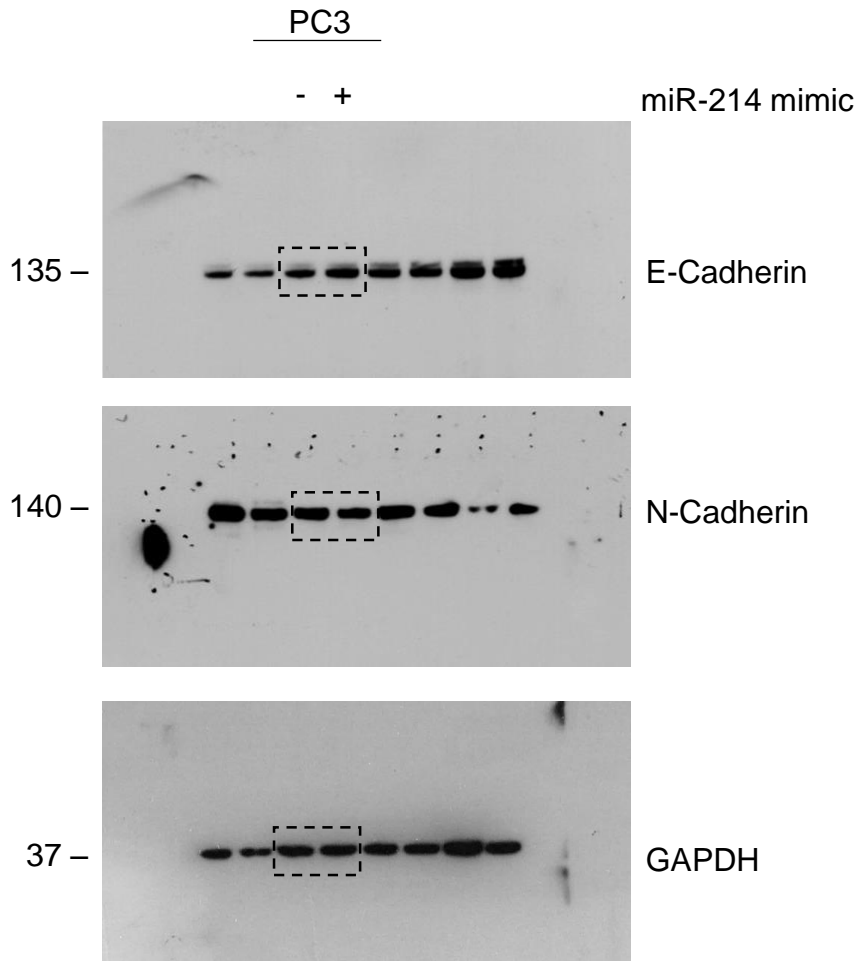
Supplementary material

S2.C



Supplementary figure 2.C (S2.C): Full length images of blots for Fig 2 C in main paper. Dotted rectangles indicate the regions used in the figures. PVDF membranes were used for probing with the respective primary antibody.

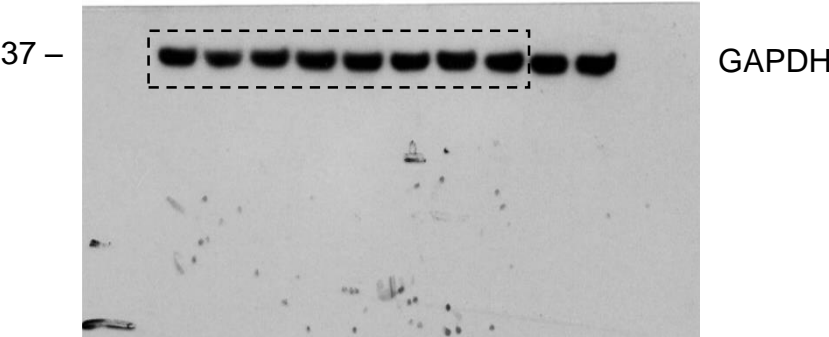
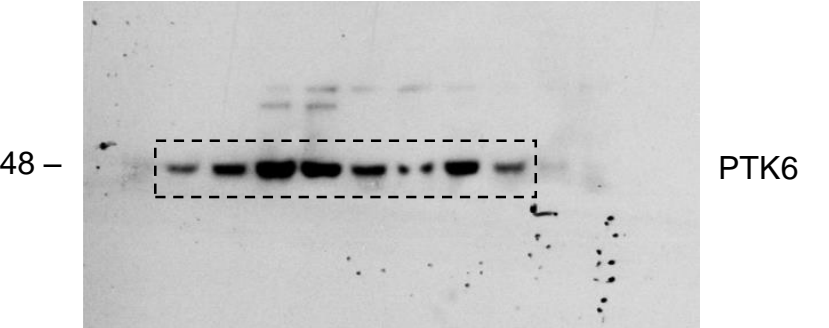
S3.E



Supplementary figure 3.E (S3.E): Full length images of blots for Fig 3 E in main paper. Dotted rectangles indicate the regions used in the figures. PVDF membranes were used for probing with the respective primary antibody.

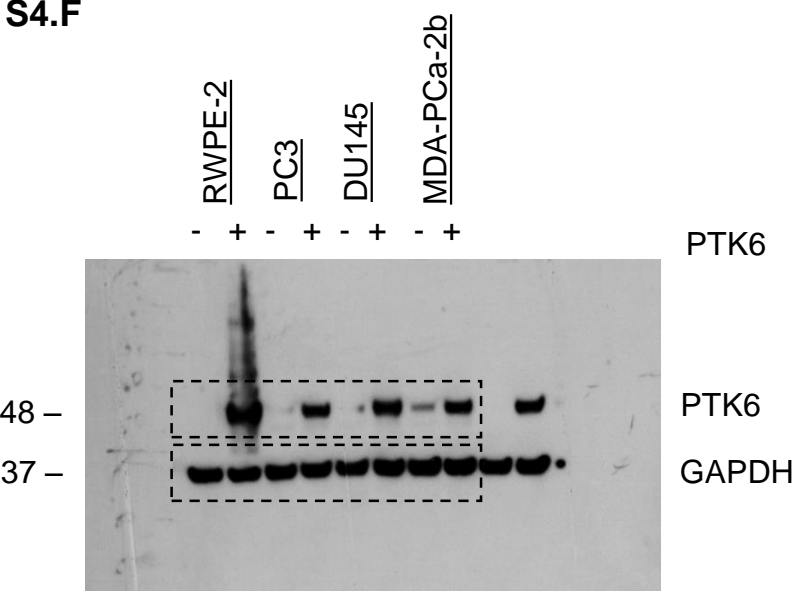
S4.D

	<u>RWPE-2</u>		<u>PC3</u>		<u>DU145</u>		<u>MDA-PCa-2b</u>		
	-	+	-	+	-	+	-	+	NC mimic
	-	+	-	+	-	+	-	+	miR-214 mimic



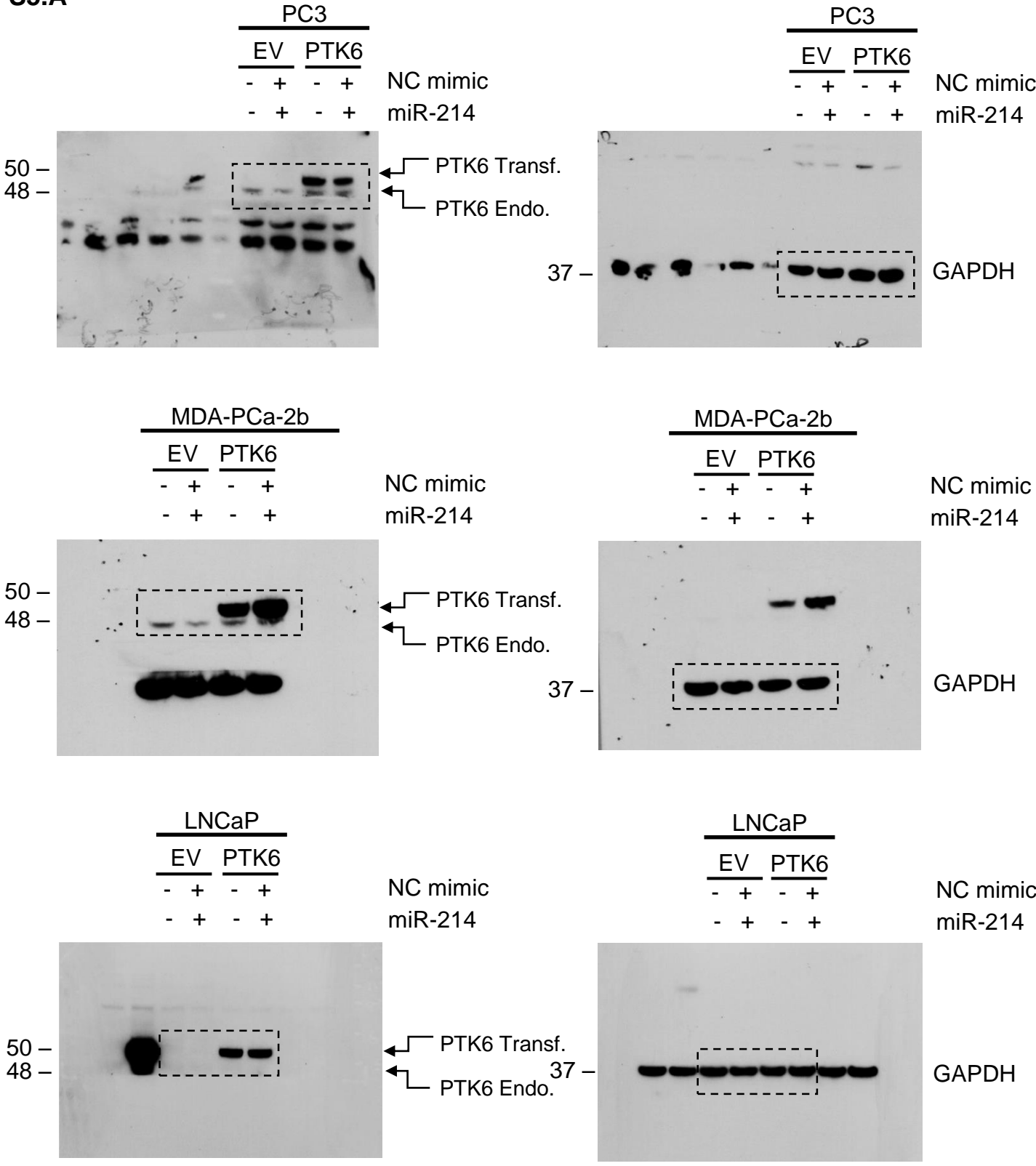
Supplementary figure 4.D (S4.D): Full length images of blots for Fig 4 D in main paper. Dotted rectangles indicate the regions used in the figures. PVDF membranes were used for probing with the respective primary antibody.

S4.F



Supplementary figure 4.F (S4.F): Full length images of blots for Fig 4 F in main paper. Dotted rectangles indicate the regions used in the figures. PVDF membranes were used for probing with the respective primary antibody.

S5.A



Supplementary figure 5.A (S5.A): Full length images of blots for Fig 5 A in main paper. Dotted rectangles indicate the regions used in the figures. PVDF membranes were used for probing with the respective primary antibody.