

S5 Fig. - Impact on results of varying detector's connectivity

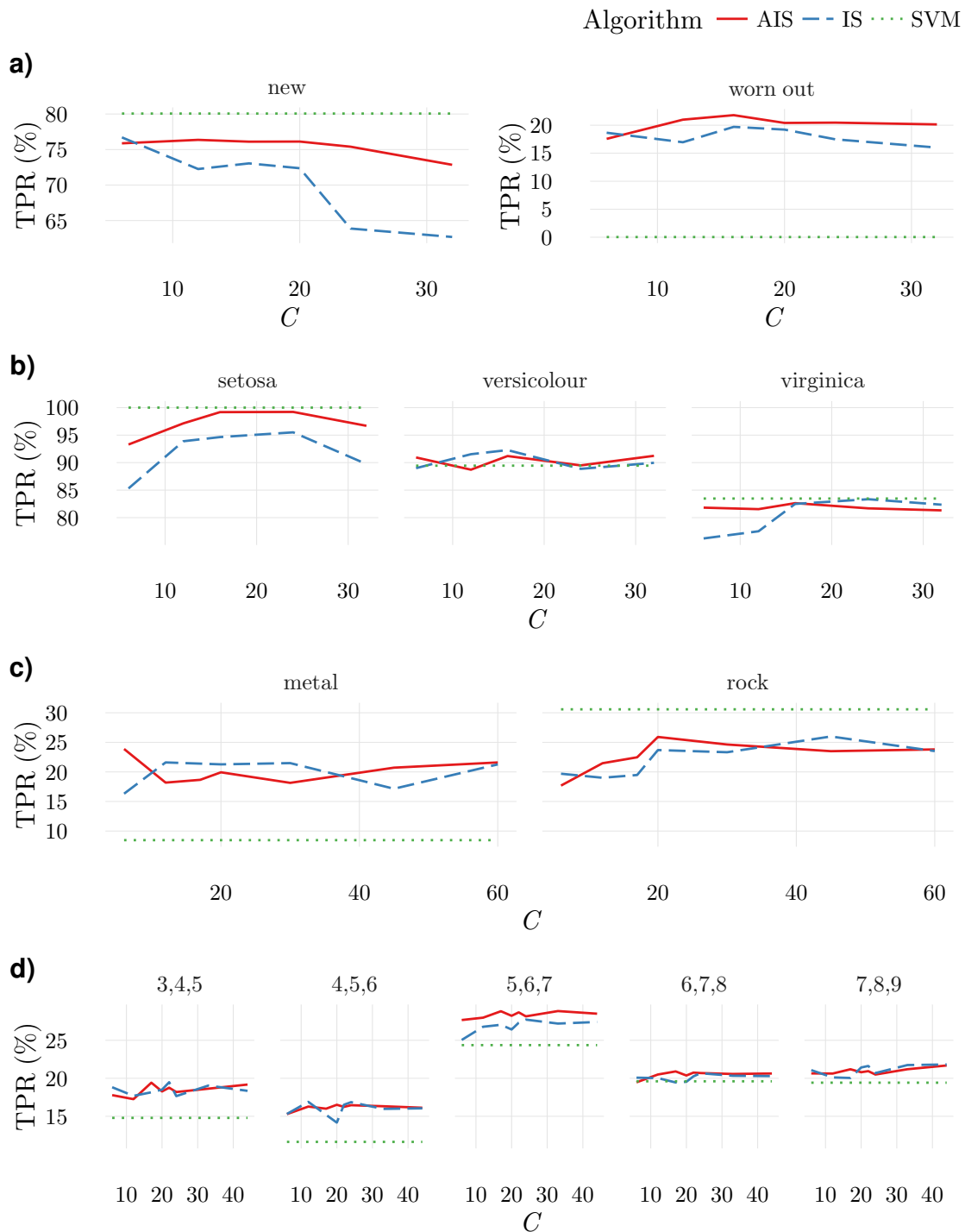


Figure 1: Average TPR obtained for different values of detectors connectivity, C . Overall increasing detectors connectivity should decrease discrimination capability. This is true for the IS and for systems with a large number of features which are also harder to educate. For the datasets analysed here the impact of C is only mild since the number of features in the several cases is relatively small. In any case, it seems clear that C should not be too small (in this case education can be very hard; see SM3) and there can be an advantage in not having full connectivity.