

S6 Fig. - Impact on results of varying T_S

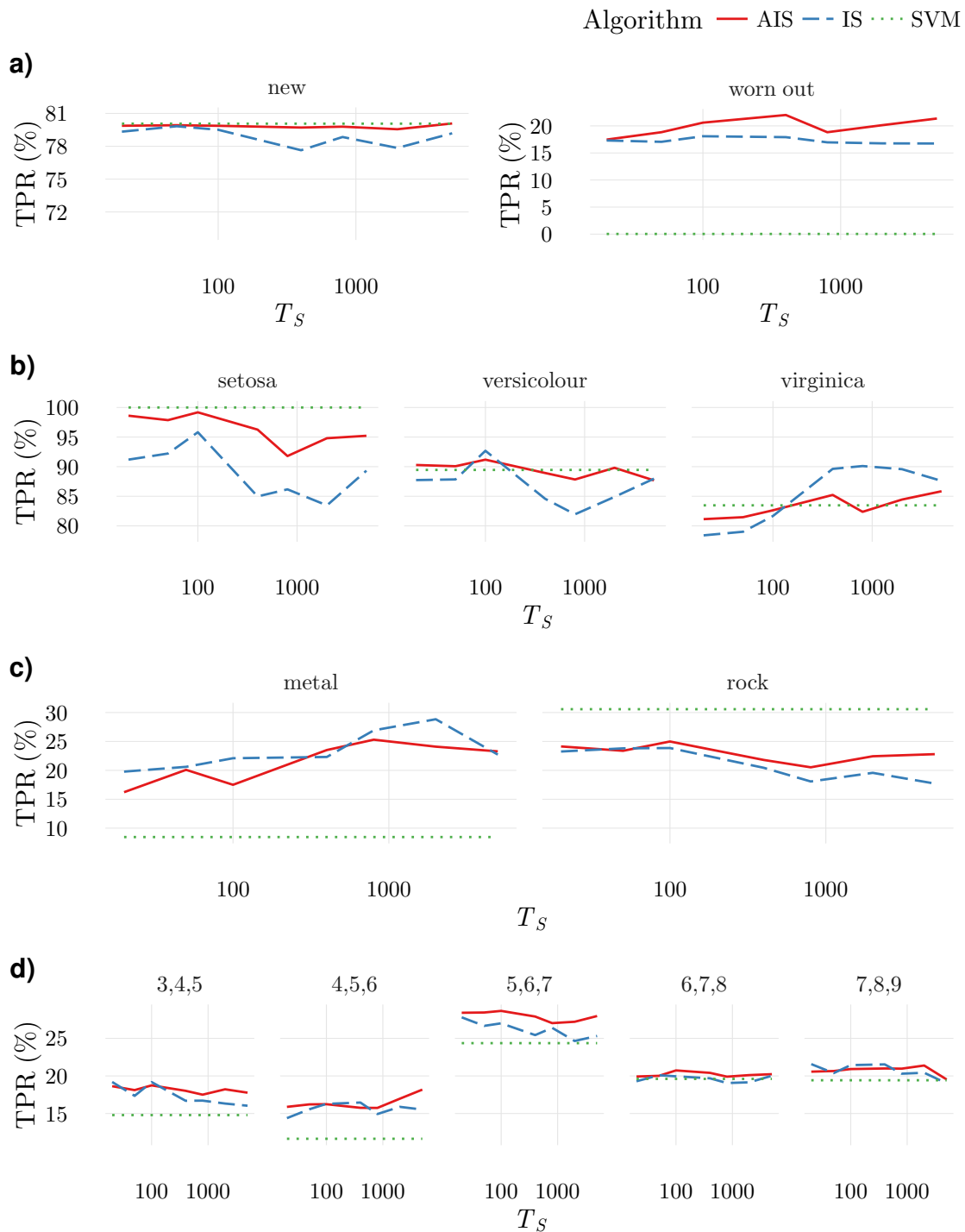


Figure 1: Impact of changing T_S , the number of iterations separating the presentation of different samples during training, when the time interval W_τ required to decrease the pairing duration threshold, τ_n , is held fixed. These results show that in the AIS the impact of T_S results in extremely reduced. This is due to the fact that education in the AIS has memory making it less critical to present a large number of samples in a short time interval. Therefore, for the new strategy, the impact of T_S variations is small. The values of T_S used in this plots is: $T_S = 20, 50, 100, 400, 800, 2000, 5000$. In each point, an average over 10 different tests involving different normal samples, have been calculated.