

## **Dapagliflozin rescues endoplasmic reticulum stress-mediated cell death**

Ryo Shibusawa<sup>1</sup>, Eijiro Yamada<sup>1\*</sup>, Shuichi Okada<sup>1</sup>, Yasuyo Nakajima<sup>1</sup>, Claire C Bastie<sup>2</sup>, Akito Maeshima<sup>3</sup>, Kyoichi Kaira<sup>4</sup>, and Masanobu Yamada<sup>1</sup>

<sup>1</sup>Department of Medicine and Molecular Science, <sup>4</sup>Department of Oncology  
Clinical Development, Gunma University Graduate School of Medicine,  
Maebashi 371-8511, Japan

<sup>2</sup>Division of Biomedical Sciences, Warwick Medical School, Coventry, West  
Midlands, United Kingdom

<sup>3</sup>Division of Nephrology, Department of Internal Medicine, Jichi Medical  
University, Shimotsuke, Tochigii, Japan

**Running title:** Dapagliflozin decreases ER stress and apoptosis

**Keywords:** SGLT2, ER stress, apoptosis

\*Correspondence to:

Eijiro Yamada

Department of Medicine and Molecular Science, Gunma University Graduate  
School of Medicine, Maebashi 371-8511, Japan

Email: [eijiro.yamada@gunma-u.ac.jp](mailto:eijiro.yamada@gunma-u.ac.jp)

Phone: 1-81-27-220-8501

FAX: 1-81-27-220-8136

Supplementary Fig. 1: Different concentrations of HK2 cells for p-eIF2a/t-eIF2a analysis

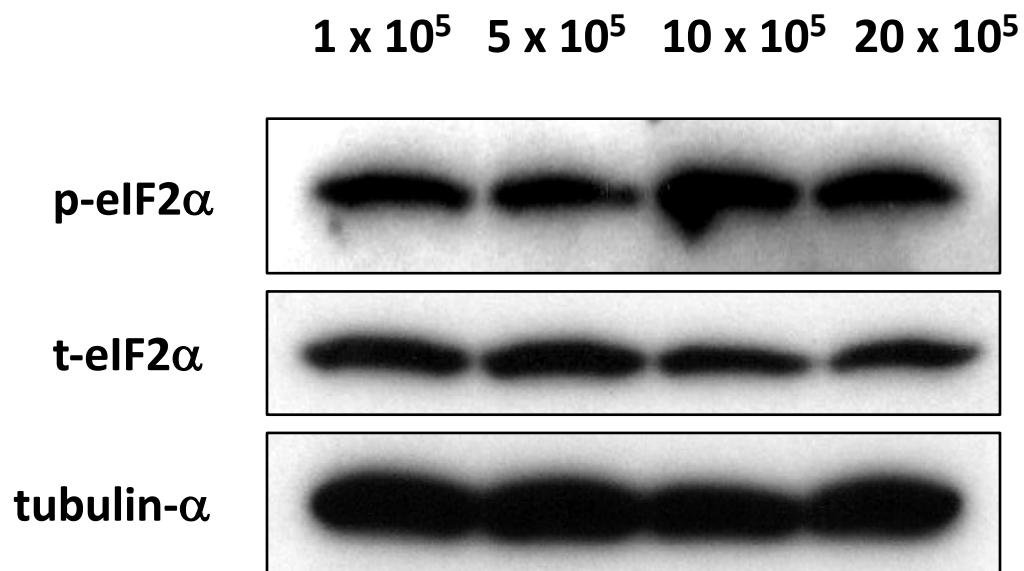
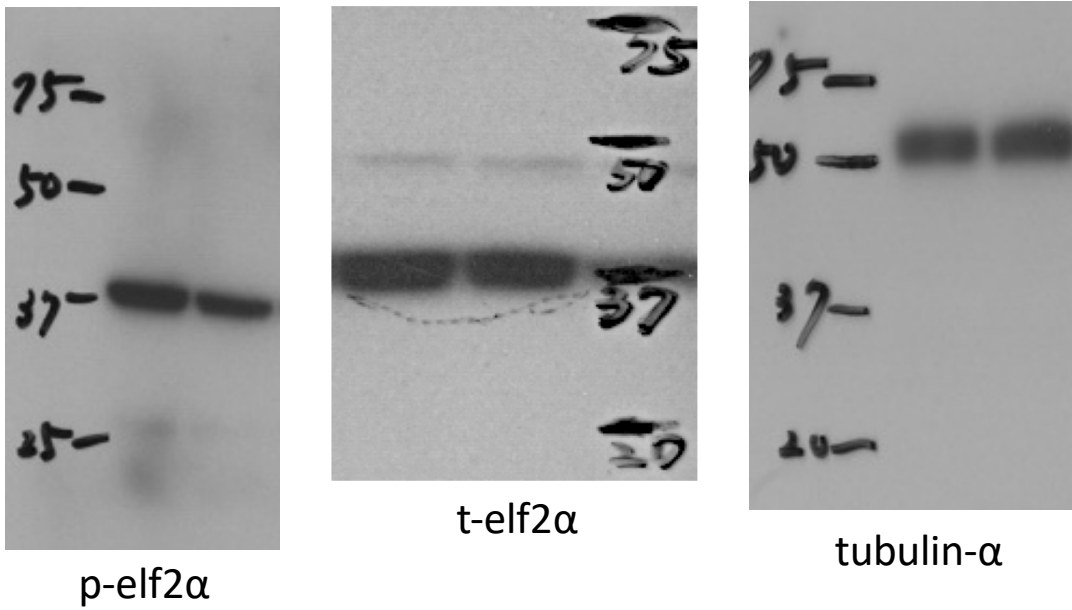


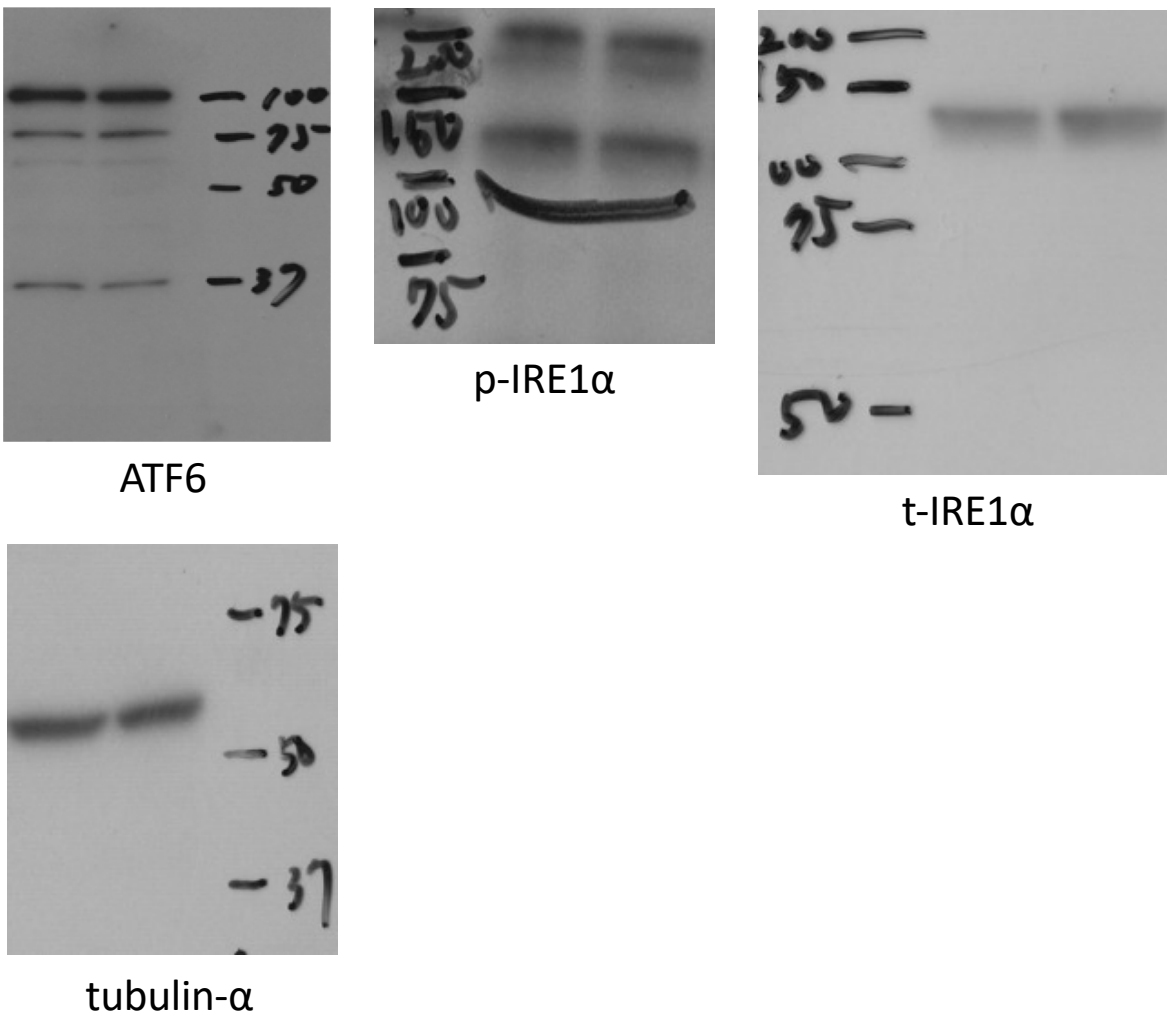
Figure Legend: Different cell numbers of HK2 cells were plated on to a 24-well plate. Immunoblotting was performed with the indicated antibodies.

Supplementary Fig. 2

a) Western blots cropped for Figure 2a



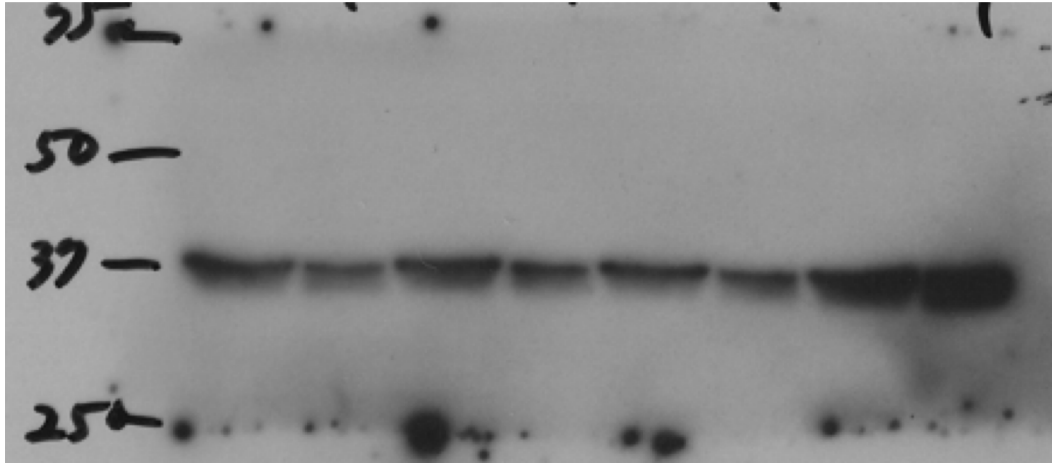
b) Western blots cropped for Figure 2d



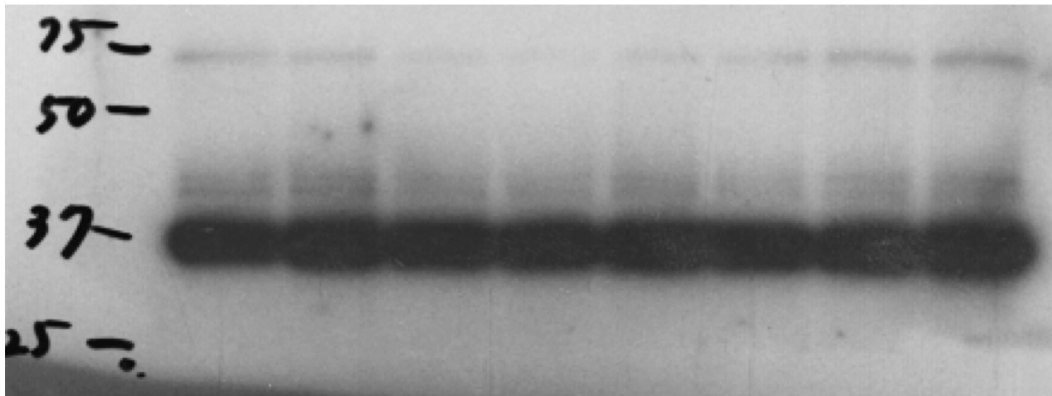
Supplementary Fig. 3

a) Western blots cropped for Figure 3a

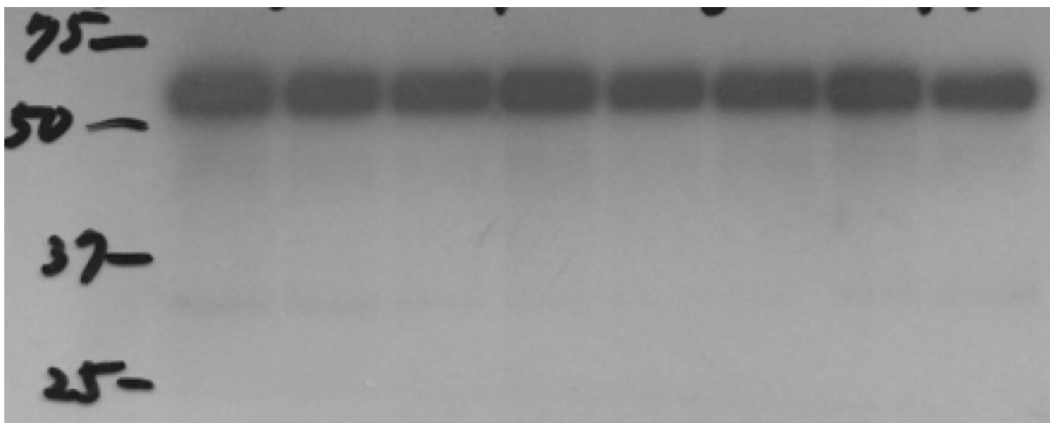
p-elf2 $\alpha$



t-elf2 $\alpha$



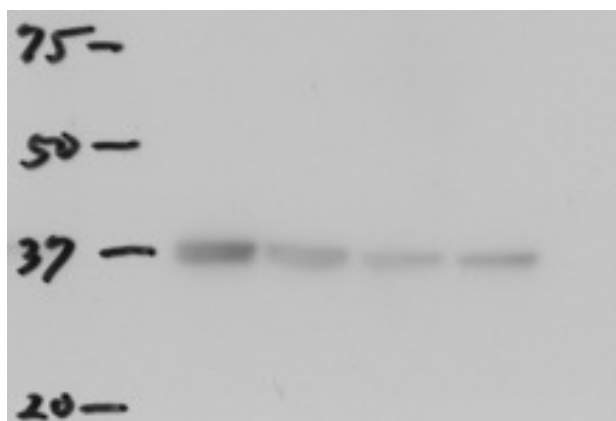
tubulin- $\alpha$



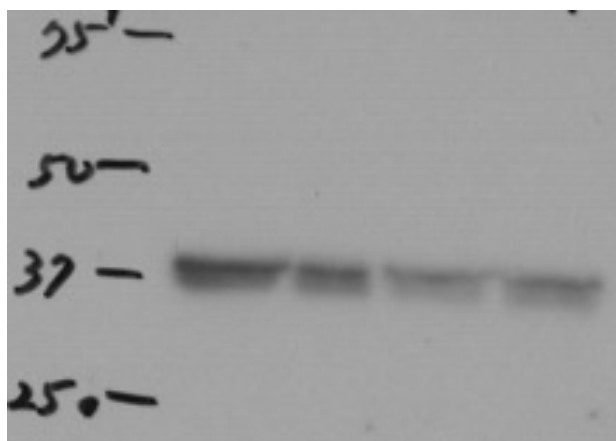
Supplementary Fig. 4

a) Western blots cropped for Figure 3b

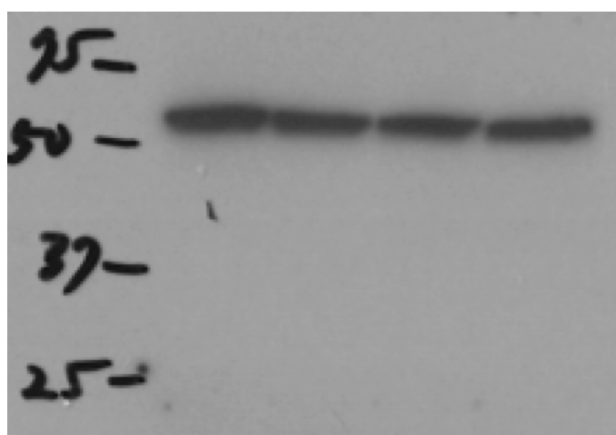
p-elf2 $\alpha$



t-elf2 $\alpha$

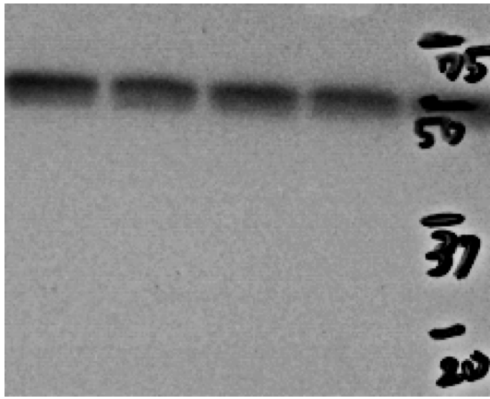


tubulin- $\alpha$

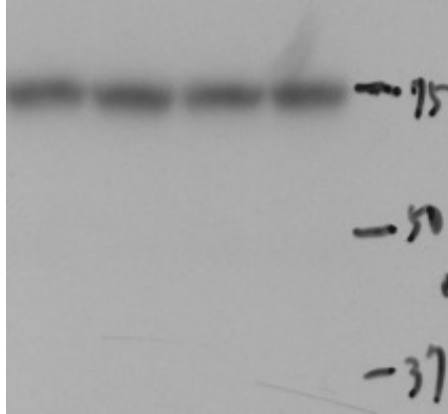


Supplementary Fig. 5

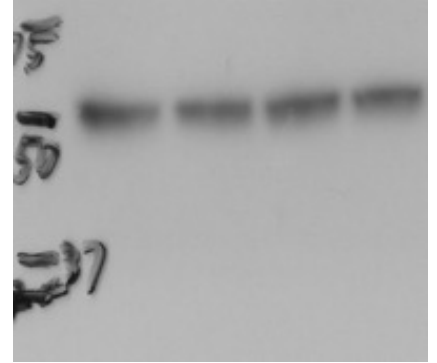
a) Western blots cropped for Figure 4a



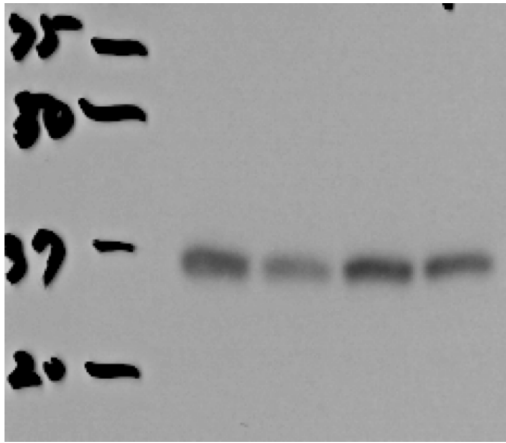
GLUT2



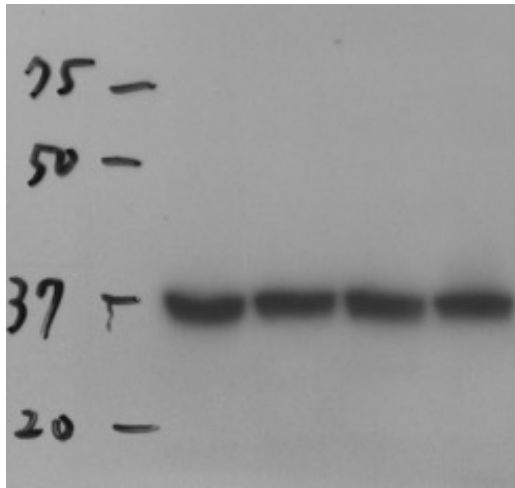
SGLT2



tubulin- $\alpha$



p-elf2 $\alpha$

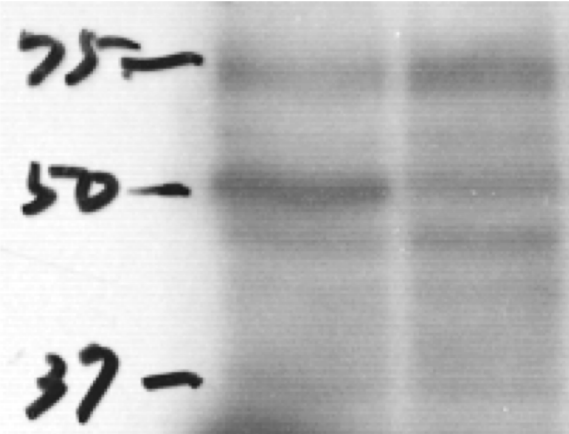


t-elf2 $\alpha$

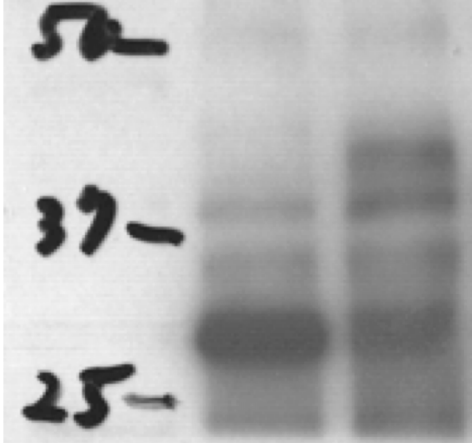


Supplementary Fig. 7

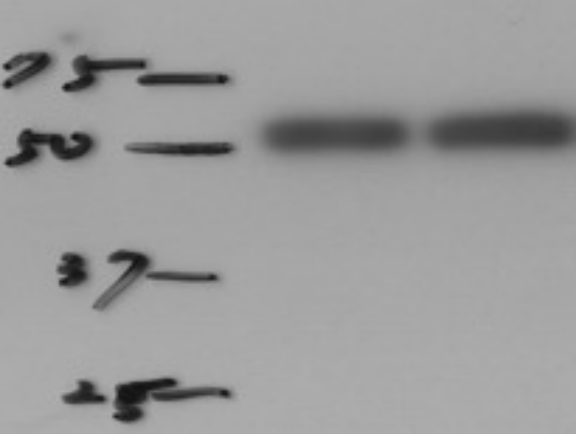
a) Western blots cropped for Figure 7a



ATF4



CHOP



tubulin- $\alpha$