

Figure S1. KRAB-dCas9-mcherry constructs. Phase and fluorescent imaging showing K-dCas9-mcherry expression in T24-Scr, T24-SOX4-KD and dual mCherry+/YFP+ in T24-SOX4-Rescue cells.

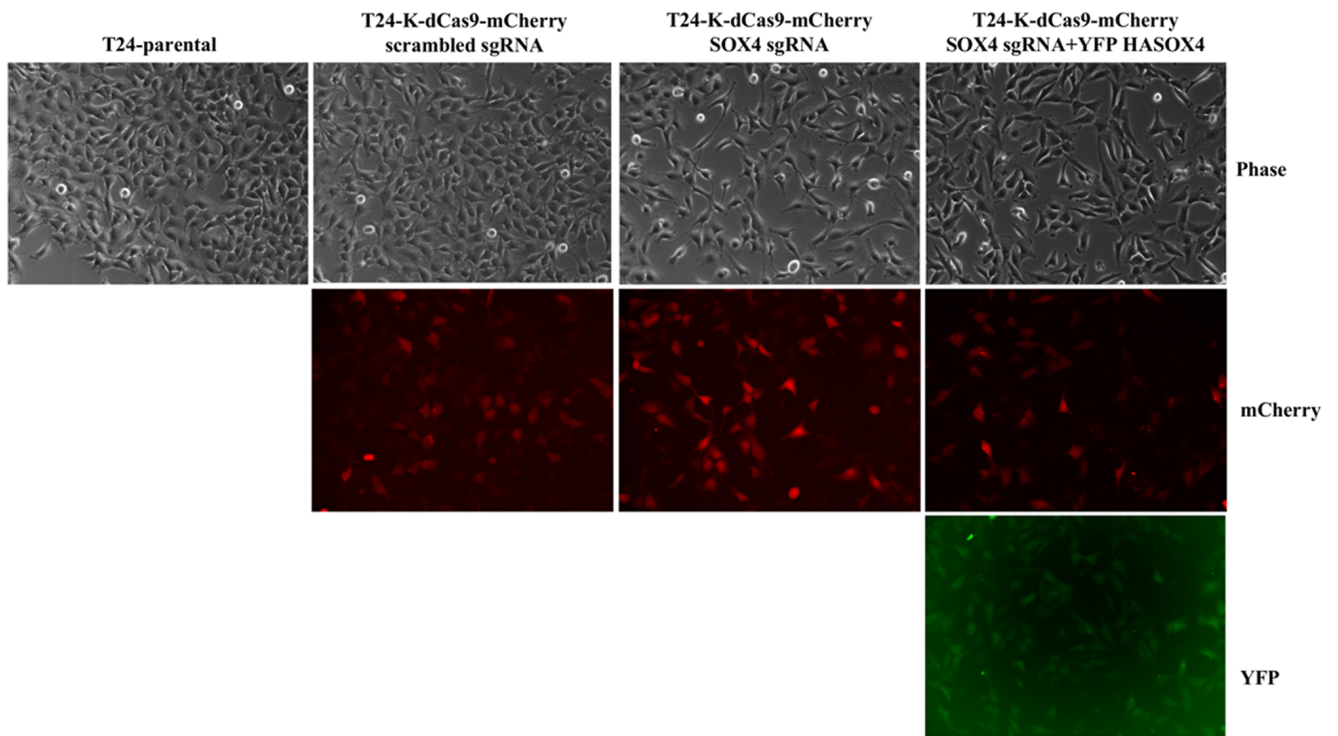


Figure S2. SOX4 knockdown or re-expression has no effect on canonical EMT markers. Western blot analysis indicating Cas9 expression in T24-Scrambled, T24-Sox4-KD and T24-SOX4-Rescue compared to T24 parental cells. SOX4-KD exerted no changes in EMT markers ZEB1 or N-cadherin. T24 cell lines did not express E-cadherin.

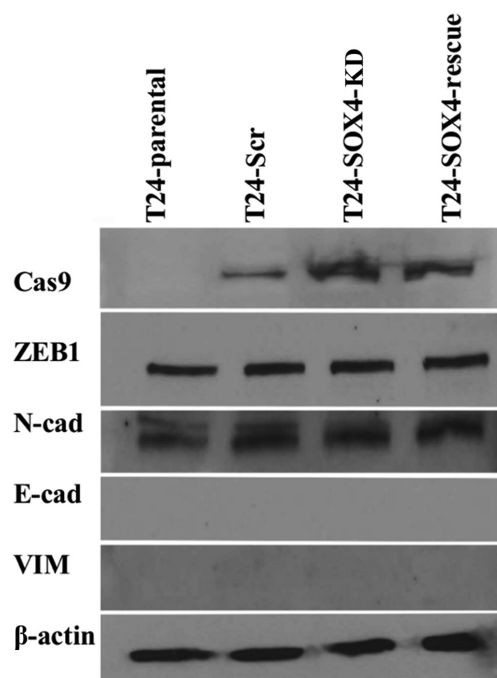


Figure S3. Microarray analysis of T24-Scr vs T24-SOX4-KD. (A) IPA analysis revealed cholesterol genes most significantly deregulated along with Wnt/ β -catenin and osteoarthritis pathways. (B) RT-qPCR validation of Clariom D microarray for selected number of cholesterol related genes confirms repressed mRNA in T24-SOX4-KD and confirmed no changes in mRNA expression of cholesterol genes in T24-SOX4-Rescue. (C) RT-qPCR of TNC and IDO validated the microarray data. *P<0.05

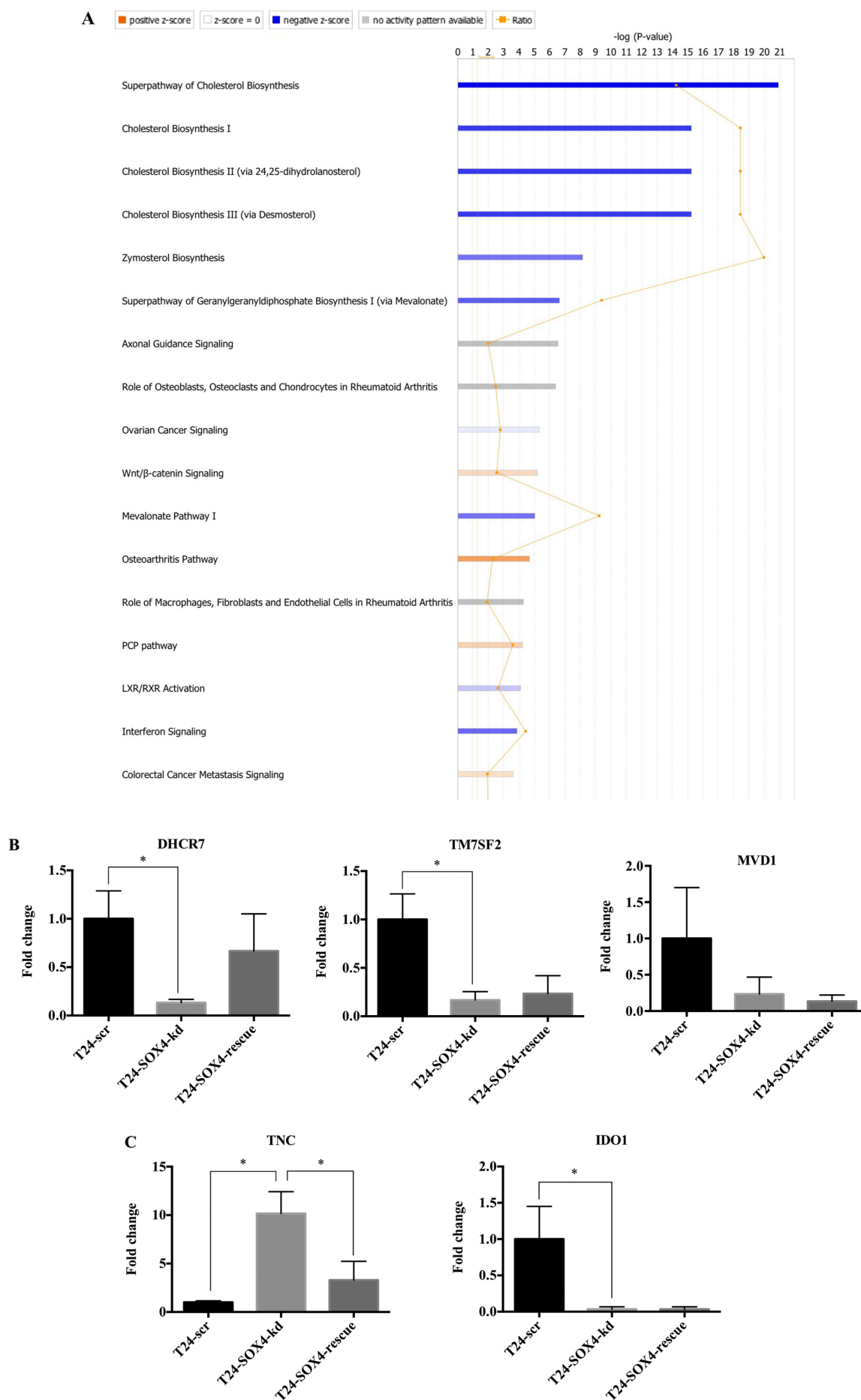


Table SI. A total of 1,487 genes significantly affected by SOX4 knockdown compared to T24-Scr cells.

Significant - positive			
Gene ID	Probe ID	Fold change	q-value (%)
TNC	TC0900011305.hg.1	176.6674056	0
stawswu	TC0900008530.hg.1	78.5390731	0
STC1	TC0800009891.hg.1	58.5209824	0
MMP1	TC1100012131.hg.1	50.28268382	0
IL13RA2	TC0X00010557.hg.1	38.79299479	0
WNT5A	TC0300011247.hg.1	36.39312838	0
MAN1A1	TC0600013010.hg.1	33.21966225	0
GABRG2	TC0500009304.hg.1	28.22540415	0
TNFRSF11B	TC0800011611.hg.1	24.55307678	0
DNER	TC0200015958.hg.1	24.31982878	0
PRLR	TC0500010480.hg.1	24.11042901	0
SEMA5A	TC0500010043.hg.1	22.73633009	0.407942629
---	TC2000009329.hg.1	19.19431053	0
CTSS	TC0100015752.hg.1	18.93459511	0
SERPINB2	TC1800009242.hg.1	18.01686383	1.037101959
PARM1	TC0400007868.hg.1	17.7883721	0
TSPAN18	TC1100007400.hg.1	17.20424588	0
SSX1	TC0X00007176.hg.1	16.66698218	0
---	TC2000009931.hg.1	16.00313241	0
VCAN	TC0500007972.hg.1	15.89209866	0
ITGA11	TC1500009861.hg.1	15.8731476	0.263891671
WFDC2	TC2000007492.hg.1	14.3234521	0.664908359
ADAMTS9	TC0300011391.hg.1	13.83054481	0
AOX1	TC0200010421.hg.1	13.0955296	0
NOV	TC0800008667.hg.1	11.93727181	2.472534784
starawbo	TC0100013053.hg.1	11.28481477	0
SMR3A	TC0400012808.hg.1	11.16133093	2.472534784
SMR3B	TC0400012809.hg.1	10.75480094	1.607801004
DUSP10	TC0100017420.hg.1	10.4417968	0
SLC14A1	TC1800007198.hg.1	10.41461005	0
FAM133A	TC0X00007851.hg.1	10.24929366	0
reniru	TC2000008164.hg.1	9.888974482	0
beepabu	TC0100007086.hg.1	9.79237744	0
NTRK2	TC0900007752.hg.1	9.533549806	0.263891671
FEZ1	TC1100012708.hg.1	9.233914239	0
APCDD1L-AS1	TC2000007902.hg.1	9.202596672	0
AP003900.6	TC2100007560.hg.1	9.030815364	0
LOC283352	TC1200009378.hg.1	8.90863873	0

flawrobu	TC0100007076.hg.1	8.856051837	0
PTPRU	TC0100007584.hg.1	8.655144064	0
AC003088.1	TC0700012253.hg.1	8.638048998	0
SLC16A6	TC1700011558.hg.1	8.637526111	1.607801004
LINC00973	TC0300008123.hg.1	8.62080843	0
THBS2	TC0600013998.hg.1	8.610560089	0
RIMS2	TC0800008487.hg.1	8.212628278	0
SIRPB1	TC2000009970.hg.1	8.146530884	0.263891671
STEAP1	TC0700008292.hg.1	8.129718603	0
NAV3	TC1200008269.hg.1	7.911558027	0
PLAUR	TC1900010856.hg.1	7.746918166	0
GDA	TC0900007552.hg.1	7.482307461	0
SDC2	TC0800008299.hg.1	7.457188621	0
---	TC0900008601.hg.1	7.421623167	0.407942629
SLC16A7	TC1200007931.hg.1	7.391969223	0
XDH	TC0200012163.hg.1	7.272799228	0
BACE2	TC2100007198.hg.1	6.974796702	0
---	TC0400010660.hg.1	6.965609439	0
---	TC0800007462.hg.1	6.8731717	1.037101959
RAB27B	TC1800007360.hg.1	6.74721827	0
---	TC0300011389.hg.1	6.721417021	0
MAGEC2	TC0X00011001.hg.1	6.54786427	0
KLF2	TC1900007270.hg.1	6.545006311	0.664908359
VDR	TC1200010559.hg.1	6.424627978	1.607801004
CD82	TC1100007394.hg.1	6.422328677	0
SULF2	TC2000009317.hg.1	6.340569822	0
SIRPD	TC2000009969.hg.1	6.292151175	0.407942629
GRIP1	TC1200011140.hg.1	6.254806123	0
---	TC2000008315.hg.1	6.244843136	1.037101959
GOS2	TC0100011453.hg.1	6.23476781	0
PALM2-AKAP2	TC0900012158.hg.1	6.20438767	0
spoyployby	TC0500007974.hg.1	6.172245375	0.263891671
---	TC1900011214.hg.1	6.16400237	0
PPP1R15A	TC1900008496.hg.1	6.088552722	0
GPR158	TC1000007061.hg.1	5.997774368	0
GABRA3	TC0X00011126.hg.1	5.994580649	0
BAGE	TC2100008486.hg.1	5.986154439	0
TRIML2	TC0400012696.hg.1	5.921229752	0
PIK3CG	TC0700008743.hg.1	5.899896925	0
RNA5SP53	TC0100014957.hg.1	5.888189762	0
SIRPA	TC2000006501.hg.1	5.881272484	0

EDNRA	TC0400008943.hg.1	5.744239226	0.407942629
ROBO1	TC0300011628.hg.1	5.732772719	0
fushor	TC0900011307.hg.1	5.715490243	3.845686185
LRRN4	TC2000008316.hg.1	5.652610344	0.664908359
PDZD2	TC0500007050.hg.1	5.60188584	0
PPP1R14C	TC0600009831.hg.1	5.582812099	0
CAMK2N1	TC0100013182.hg.1	5.532449332	0
KITLG	TC1200011460.hg.1	5.462730814	1.607801004
HAS2	TC0800011646.hg.1	5.461168485	3.845686185
PAG1	TC0800010926.hg.1	5.414377269	0
SEMA7A	TC1500010018.hg.1	5.392704257	0
NFATC2	TC2000009458.hg.1	5.366224827	0.664908359
STEAP1B	TC0700010443.hg.1	5.329541475	0
GLIS3	TC0900009424.hg.1	5.256747115	1.607801004
MMP3	TC1100012133.hg.1	5.140184581	0.407942629
MGLL	TC0300012323.hg.1	5.115652735	0.263891671
	HTA2-pos-3371052_st	5.022320741	3.845686185
COL6A2	TC2100007451.hg.1	4.957763091	0
ELAVL2	TC0900009740.hg.1	4.916194235	0
---	TC0X00010228.hg.1	4.911243432	0
KCNAB2	TC0100006675.hg.1	4.909964465	0
NEO1	TC1500007814.hg.1	4.893547941	0
MAMLD1	TC0X00008712.hg.1	4.887554083	0
---	TC0600009216.hg.1	4.881460984	0.263891671
kunemi	TC1200008044.hg.1	4.869524547	3.845686185
RP5-907D15.3	TC2000007903.hg.1	4.816004533	0
RP11-323N12.5	TC1700009064.hg.1	4.802787297	0.407942629
DPP4	TC0200014764.hg.1	4.789068817	1.607801004
DISC1FP1	TC1100008740.hg.1	4.746571285	0
LAMC2	TC0100010867.hg.1	4.682405895	3.845686185
L1CAM	TC0X00011413.hg.1	4.64828169	0.263891671
PROX1	TC0100011566.hg.1	4.643514318	0
ROR1	TC0100008594.hg.1	4.622542765	0
ZDHHC20-IT1	TC1300008290.hg.1	4.617683896	0.664908359
CTC-338M12.9	TC0500009766.hg.1	4.609359896	0.407942629
STEAP2	TC0700008293.hg.1	4.55836121	1.037101959
CSTA	TC0300008550.hg.1	4.541076214	0
VCAN-AS1	TC0500011344.hg.1	4.54093772	0
PPP4R4	TC1400008058.hg.1	4.499254318	0
CREB5	TC0700007034.hg.1	4.493729653	0
CTD-2538G9.3	TC1900007293.hg.1	4.485238132	1.607801004

SEL1L3	TC0400010282.hg.1	4.473816758	1.037101959
FGF13	TC0X00010954.hg.1	4.431012305	0.407942629
GLT8D2	TC1200011752.hg.1	4.42430241	0.263891671
jornoyby	TC1000010279.hg.1	4.400231468	1.037101959
MTSS1	TC0800011713.hg.1	4.393003808	0
flonu	TC1200008046.hg.1	4.38023316	1.037101959
AC090044.2	TC0300006444.hg.1	4.353031369	0.407942629
AL133493.2	TC2100007430.hg.1	4.348822524	0.664908359
---	TCUn_KI270742v100006435.hg.1	4.348216426	1.607801004
BAGE5	TC2200006432.hg.1	4.347897712	0
MME	TC0300009258.hg.1	4.341583758	0.407942629
MAP3K7CL	TC2100006854.hg.1	4.340642684	0.263891671
kunemi	TC1200008043.hg.1	4.308746336	2.472534784
PREX1	TC2000009357.hg.1	4.2897146	0
CD68	TC1700012191.hg.1	4.28349083	0
KCND2	TC0700008918.hg.1	4.274053104	1.607801004
CR1L	TC0100011417.hg.1	4.26752469	1.037101959
ATP2B1	TC1200011474.hg.1	4.245077326	0.263891671
U7	TC0300008124.hg.1	4.151601825	3.845686185
CADPS2	TC0700012444.hg.1	4.0976618	1.037101959
LINC00702	TC1000009629.hg.1	4.096300111	0
studaw	TC0200007763.hg.1	4.096049784	1.037101959
noypubo	TC0200008908.hg.1	4.067614151	0.263891671
CLMP	TC1100012615.hg.1	4.015123415	1.037101959
CPED1	TC0700008928.hg.1	4.00826877	2.472534784
LINC01291	TC0200016478.hg.1	3.999663376	3.845686185
HCLS1	TC0300012166.hg.1	3.999258401	0.407942629
sloygobu	TC0300009315.hg.1	3.98849209	1.607801004
PRICKLE1	TC1200010459.hg.1	3.987229323	0
NTNG1	TC0100009307.hg.1	3.934092375	0
BCL2A1	TC1500010184.hg.1	3.934076468	0.263891671
PVRL1	TC1100012535.hg.1	3.933282795	1.037101959
ATP2B4	TC0100011267.hg.1	3.931021261	1.037101959
MMP10	TC1100012130.hg.1	3.897216061	0.664908359
CTD-2291D10.4	TC1900011696.hg.1	3.871499619	3.845686185
MBNL3	TC0X00010837.hg.1	3.867289232	0.407942629
---	TC0X00009147.hg.1	3.854929342	1.607801004
GAS6	TC1300009924.hg.1	3.823453292	2.472534784
mupyby	TC1000010578.hg.1	3.821487338	1.037101959
PCDHB6	TC0500013242.hg.1	3.812941773	1.607801004
RP11-490N5.3	TC1300008510.hg.1	3.805001221	1.037101959

---	TC1200008045.hg.1	3.802932283	2.472534784
DKK3	TC1100010123.hg.1	3.802625422	0.407942629
lerkubu	TC0100016866.hg.1	3.79971905	1.607801004
---	TC0800009226.hg.1	3.792105232	0.407942629
gogloy	TC1100006875.hg.1	3.789205368	3.845686185
DNM1	TC0900008851.hg.1	3.781082514	0
PHACTR1	TC0600006976.hg.1	3.774805996	0
SH3PXD2A	TC1000011726.hg.1	3.755557057	1.607801004
RP5-875H18.9	TC1700008231.hg.1	3.755191765	0.407942629
SIRPAP1	TC2200007066.hg.1	3.742901503	0.263891671
ADAMTS1	TC2100007821.hg.1	3.736843126	0.664908359
ZFPM2-AS1	TC0800011417.hg.1	3.730545877	1.037101959
SPHK1	TC1700008945.hg.1	3.706364879	1.037101959
EPHB1	TC0300013877.hg.1	3.690665535	0
EHD3	TC0200007155.hg.1	3.690547861	0
plafleybu	TC0700007600.hg.1	3.688654506	1.037101959
RP11-431J24.2	TC0X00009145.hg.1	3.660885961	0.407942629
CORO2B	TC1500007677.hg.1	3.636287031	1.607801004
CHST15	TC1000012117.hg.1	3.595591815	1.607801004
SIGLEC15	TC1800007201.hg.1	3.578500671	1.037101959
LAMB3	TC0100017167.hg.1	3.577594809	0
shofarby	TC0800011717.hg.1	3.573675155	2.472534784
ANKH	TC0500010169.hg.1	3.571234823	0
41700	TC0500011935.hg.1	3.551104338	0.263891671
PRKG2	TC0400011159.hg.1	3.549754701	0.263891671
---	TC0600013385.hg.1	3.540647167	0.263891671
WNT7A	TC0300010350.hg.1	3.537422196	0.664908359
smulerbo	TC0200014932.hg.1	3.529621947	1.607801004
MYO1D	TC1700010358.hg.1	3.515270803	0.263891671
SIPA1L2	TC0100017748.hg.1	3.509030733	1.037101959
STX3	TC1100013012.hg.1	3.497263299	0
speyployby	TC0500007973.hg.1	3.494263528	0.263891671
CD209	TC1900009493.hg.1	3.473060398	0.664908359
MMP14	TC1400006659.hg.1	3.458736242	0
PPP2R3A	TC0300008904.hg.1	3.444238387	2.472534784
snoyla	TC0800011592.hg.1	3.442769278	2.472534784
chuchee	TC1100012050.hg.1	3.412063312	1.607801004
klawstabu	TC0500006923.hg.1	3.408578203	2.472534784
TNFAIP3	TC0600009597.hg.1	3.408259064	2.472534784
GALNT3	TC0200014809.hg.1	3.404071287	1.607801004
COL12A1	TC0600012314.hg.1	3.401526904	1.607801004

SERPINB8	TC1800009245.hg.1	3.399079645	0.407942629
TPK1	TC0700012917.hg.1	3.397318945	1.607801004
VWA5A	TC1100009374.hg.1	3.388672977	0.664908359
CYP4F11	TC1900009896.hg.1	3.383972279	0.664908359
RP11-752L20.3	TC0400008944.hg.1	3.383256363	0.263891671
kleetoybu	TC1800008659.hg.1	3.378581523	1.607801004
TGIF2LX	TC0X00007820.hg.1	3.376939696	0.263891671
glernoy	TC0X00007751.hg.1	3.374993757	0
PLPP3	TC0100018443.hg.1	3.36667432	1.037101959
RFTN1	TC0300010427.hg.1	3.362093081	1.037101959
SEMA3A	TC0700013579.hg.1	3.342974268	1.037101959
AMTN	TC0400007783.hg.1	3.342174746	1.037101959
---	TC0X00010176.hg.1	3.335260815	0.263891671
THSD4	TC1500007739.hg.1	3.332740913	0.263891671
TMEM255B	TC1300010007.hg.1	3.329144135	0.263891671
ITGA5	TC1200010839.hg.1	3.318974396	0.407942629
OSBPL6	TC0200016571.hg.1	3.316747456	0
ITPR3	TC0600007711.hg.1	3.29510438	0
choyrer	TC1500007741.hg.1	3.292605308	1.037101959
RP11-86A5.1	TC0X00006833.hg.1	3.289300924	1.037101959
---	TC1200011021.hg.1	3.285050009	3.845686185
CACHD1	TC0100008602.hg.1	3.264830666	0
---	TC0300012896.hg.1	3.262058527	0
MLPH	TC0200011251.hg.1	3.251494725	3.845686185
---	TC1700011148.hg.1	3.248866959	0.407942629
PDCD1LG2	TC0900006560.hg.1	3.245333519	0.407942629
SLC16A2	TC0X00007655.hg.1	3.239534263	0
vawdarby	TC0800011418.hg.1	3.232286134	1.607801004
POTEE	TC0200009331.hg.1	3.211867029	2.472534784
temira	TC0100014960.hg.1	3.20560093	2.472534784
folar	TC0900008027.hg.1	3.187767883	3.845686185
---	TC0300011888.hg.1	3.185650324	0.664908359
RNU6-917P	TC2000008163.hg.1	3.150359566	2.472534784
SPRYD3	TC1200010788.hg.1	3.128742476	0.664908359
hosoyu	TC0300011315.hg.1	3.123569398	2.472534784
RP5-1014O16.9	TC0X00008690.hg.1	3.123458078	0.664908359
COL6A1	TC2100007446.hg.1	3.115857309	0
SLIT2	TC0400007016.hg.1	3.115184441	0
SAMD5	TC0600014191.hg.1	3.11489655	1.607801004
TFAP2C	TC2000007830.hg.1	3.110193126	3.845686185
EPHA4	TC0200015815.hg.1	3.081912353	2.472534784

loysawby	TC0900008092.hg.1	3.078983209	2.472534784
LINC01234	TC1200012000.hg.1	3.070230384	0.263891671
BACH2	TC0600012554.hg.1	3.068284834	0.407942629
COBLL1	TC0200014792.hg.1	3.051547047	0.407942629
DOCK11	TC0X00008228.hg.1	3.020750439	0.664908359
LOC103344931	TC1000008937.hg.1	3.019641439	0.407942629
morsey	TC2100008045.hg.1	3.018521687	0.263891671
RP11-498C9.15	TC1700012077.hg.1	3.015244517	0.664908359
---	TC1300008373.hg.1	3.00777886	2.472534784
FAM198B	TC0400012245.hg.1	2.999820479	2.472534784
RP11-142E9.1	TC1300006849.hg.1	2.985878408	0.407942629
IL31RA	TC0500007432.hg.1	2.980985794	3.845686185
PITPNC1	TC1700008690.hg.1	2.977440304	0.664908359
AC104405.1	TC0200009380.hg.1	2.96870382	0.664908359
KCNK3	TC0200007042.hg.1	2.9604714	2.472534784
TESPA1	TC1200010850.hg.1	2.959086254	1.607801004
RP11-435B5.5	TC14_GL000009v2_random00006453.hg.1	2.95596547	2.472534784
bawbeybu	TC0300012240.hg.1	2.954531233	3.845686185
	HTA2-pos-PSR12027046.hg.1	2.951742934	2.472534784
---	TC0500007242.hg.1	2.935711098	2.472534784
noyjo	TC0600008635.hg.1	2.927126307	0.263891671
PLEKHG1	TC0600009843.hg.1	2.924721999	1.037101959
---	TC1800009021.hg.1	2.910787459	2.472534784
---	TC0500010510.hg.1	2.908320135	2.472534784
CD33	TC1900008633.hg.1	2.906693931	3.845686185
---	TC0200008189.hg.1	2.905799009	3.845686185
BX088702.2	TC0900007312.hg.1	2.899423017	2.472534784
SLC8B1	TC1200011993.hg.1	2.898242877	0.263891671
CFI	TC0400011580.hg.1	2.894328987	1.037101959
TBC1D2	TC0900010971.hg.1	2.891011137	2.472534784
shafarby	TC1300008944.hg.1	2.888952533	2.472534784
CTD-2066L21.2	TC0500010446.hg.1	2.888633824	1.607801004
NRP2	TC0200010545.hg.1	2.885496338	1.607801004
---	TC1000008721.hg.1	2.871993864	0.407942629
LRRC6	TC0800011861.hg.1	2.870299602	2.472534784
kykerbu	TC0300013152.hg.1	2.868101671	1.607801004
CPQ	TC0800008300.hg.1	2.847823036	0
RP11-435B5.3	TC14_GL000009v2_random00006452.hg.1	2.844999864	2.472534784
GLI3	TC0700010857.hg.1	2.83996208	2.472534784
ADTRP	TC0600010825.hg.1	2.839546263	3.845686185
RP5-1014O16.10	TC0X00008691.hg.1	2.837809345	0.664908359

ZMIZ1	TC1000008182.hg.1	2.821328685	0.263891671
worko	TC0700009727.hg.1	2.81615827	3.845686185
RP4-673D20.5	TC2000008166.hg.1	2.814201732	0.664908359
---	TC2000008174.hg.1	2.796391943	0.263891671
MYLK	TC0300012212.hg.1	2.792176873	1.607801004
GRIN2D	TC1900008470.hg.1	2.767287589	0.664908359
flobler	TC0700012620.hg.1	2.767047673	2.472534784
---	TC2000009353.hg.1	2.753003448	0.407942629
SNX10	TC0700006984.hg.1	2.752845387	0.407942629
SPATA6	TC0100014127.hg.1	2.750618549	3.845686185
SCG5	TSUnmapped00000663.hg.1	2.750407245	2.472534784
PROS1	TC0300011757.hg.1	2.748367637	1.037101959
GLIPR1	TC1200008224.hg.1	2.734878359	0.664908359
NAV2	TC1100007030.hg.1	2.734093031	1.607801004
ALMS1	TC0200008047.hg.1	2.733537499	0.664908359
HTN3	TC0400007771.hg.1	2.731328489	0.263891671
	HTA2-pos-3374470_st	2.730553802	0.664908359
shukubu	TC0200007764.hg.1	2.729197248	1.607801004
CTD-2044J15.2	TC0500013151.hg.1	2.716753806	0
VPS37B	TC1200012254.hg.1	2.711339616	0.664908359
GPR176	TC1500010854.hg.1	2.71132098	2.472534784
klawbley	TC0600012558.hg.1	2.70049601	1.607801004
blawzeybu	TC1500009749.hg.1	2.698414233	0.263891671
SLC37A2	TC1100009408.hg.1	2.691633533	2.472534784
---	TC1500007312.hg.1	2.690938495	0.407942629
roharu	TC0X00007947.hg.1	2.678491096	3.845686185
RP11-341D18.6	TC1300006434.hg.1	2.677779034	2.472534784
APCDD1L	TC2000009624.hg.1	2.677555538	2.472534784
meysma	TC1700008664.hg.1	2.672905811	2.472534784
TMOD1	TC0900008150.hg.1	2.672898863	3.845686185
CD163L1	TC1200012748.hg.1	2.672752194	2.472534784
RP4-607J23.2	TC0700013407.hg.1	2.667343882	1.037101959
RP11-265D17.2	TC1100010131.hg.1	2.66516989	2.472534784
CENPP	TC0900007953.hg.1	2.664494921	0.263891671
KIF24	TC0900009892.hg.1	2.660627118	0.263891671
MUC7	TC0400007782.hg.1	2.649701176	0.407942629
CCDC15	TC1100009407.hg.1	2.642913577	0
TMEM164	TC0X00008108.hg.1	2.636878322	2.472534784
TMEM71	TC0800012470.hg.1	2.630788314	0.664908359
PLEC	TC0800012176.hg.1	2.629571089	1.607801004
LIG1	TC1900011060.hg.1	2.62118346	0.263891671

KLHL21	TC0100012690.hg.1	2.61320807	2.472534784
DUSP5	TC1000008891.hg.1	2.609368894	0.263891671
ARHGAP22	TC1000010575.hg.1	2.60878325	0.664908359
sarstorbu	TC0500012777.hg.1	2.608688167	2.472534784
RNF152	TC1800009306.hg.1	2.607527106	0.664908359
POPDC3	TC0600012709.hg.1	2.603757338	0.263891671
sharglee	TC0300007402.hg.1	2.602607191	0.664908359
FAM129A	TC0100016678.hg.1	2.600078174	0.664908359
CTC-480C2.1	TC0500007995.hg.1	2.595506619	0.407942629
jyslar	TC1700007395.hg.1	2.586950591	1.037101959
RP5-1180D12.1	TC1200009650.hg.1	2.585907196	0
roply	TC0100015888.hg.1	2.585496467	2.472534784
---	TC1700008871.hg.1	2.581055207	0.407942629
bP-21264C1.1	TC2100007543.hg.1	2.577392787	3.845686185
RP11-763B22.11	TC0100009717.hg.1	2.574159443	0.407942629
DOCK10	TC0200015893.hg.1	2.573870259	0.263891671
HIST1H1D	TC0600011138.hg.1	2.573516145	1.037101959
NFIX	TC1900007115.hg.1	2.57309698	0.407942629
RP11-588H23.3	TC1200008166.hg.1	2.571555428	2.472534784
	HTA2-pos-PSR12027058.hg.1	2.568719306	1.037101959
FAM26E	TC0600009234.hg.1	2.564817635	1.607801004
RP11-350F4.2	TC1200012786.hg.1	2.562338068	1.037101959
FZD1	TC0700008306.hg.1	2.553341785	0.664908359
P2RY2	TC1100008378.hg.1	2.552079168	1.037101959
AC004067.5	TC0400008382.hg.1	2.537162194	3.845686185
	HTA2-pos-3374486_st	2.536612829	0.263891671
bordarbu	TC0300009037.hg.1	2.534599411	3.845686185
TLN1	TC0900009950.hg.1	2.534382303	1.037101959
TCONS_l2_00002184	TC0100015525.hg.1	2.534225962	1.607801004
---	TC1800009282.hg.1	2.531823937	3.845686185
doysaw	TC1800008660.hg.1	2.517003839	2.472534784
DLG5	TC1000011130.hg.1	2.516792017	0.664908359
JUN	TC0100014349.hg.1	2.515966129	0.664908359
ST3GAL1	TC0800011887.hg.1	2.514758453	2.472534784
MAGEA11	TC0X00008689.hg.1	2.510897988	1.037101959
	HTA2-pos-3581365_st	2.50814673	1.037101959
PCNT	TC2100007465.hg.1	2.50778978	1.037101959
shuso	TC1500009274.hg.1	2.50013688	3.845686185
HOMER2	TC1500010251.hg.1	2.49540532	1.607801004
HECW2	TC0200015318.hg.1	2.494834158	1.607801004
tisomi	TC1100008439.hg.1	2.491480444	1.037101959

yanemi	TC1200010517.hg.1	2.490404347	1.037101959
POF1B	TC0X00010207.hg.1	2.489043453	0
---	TC1700007611.hg.1	2.488841173	2.472534784
TPTE	TC2100008487.hg.1	2.48674214	2.472534784
TTC39C	TC1800006902.hg.1	2.477682941	0.664908359
HIST1H3A	TC0600007262.hg.1	2.471151138	2.472534784
PTPRG-AS1	TC0300011360.hg.1	2.469533005	1.037101959
	HTA2-pos-PSR12027045.hg.1	2.459785476	0.263891671
HMG5	TC0X00010172.hg.1	2.458818367	0.664908359
SSX8	TC0X00007292.hg.1	2.458020731	1.037101959
	HTA2-pos-PSR12027032.hg.1	2.457615409	1.037101959
deebloy	TC0600011586.hg.1	2.45677928	1.037101959
HIST1H4I	TC0600014084.hg.1	2.450674708	2.472534784
moyrey	TC1700011621.hg.1	2.450515746	1.037101959
RAPH1	TC0200015476.hg.1	2.449002364	3.845686185
MCOLN3	TC0100014769.hg.1	2.447356466	1.607801004
TMEM117	TC1200007408.hg.1	2.447310381	0
SETBP1	TC1800007186.hg.1	2.444351905	0.664908359
TGOLN2	TC0200008244.hg.1	2.440704551	0.407942629
TCHP	TC1200012704.hg.1	2.435775917	0.407942629
ABLIM1	TC1000011904.hg.1	2.429371852	1.607801004
EPHX4	TC0100009030.hg.1	2.427550262	2.472534784
klyvoy	TC1900010820.hg.1	2.423335102	2.472534784
fuklarbu	TC1000008316.hg.1	2.421795142	3.845686185
HLA-DPA1	TC0600011517.hg.1	2.420802138	0.664908359
smeeleeby	TC0700007276.hg.1	2.418403826	0.664908359
RPGR	TC0X00009387.hg.1	2.417403975	0.263891671
worklor	TC0100007300.hg.1	2.416640712	2.472534784
STRIP2	TC0700009089.hg.1	2.416245563	0.263891671
PDE4DIP	TC0100009837.hg.1	2.414403273	1.037101959
---	TC0200013160.hg.1	2.411669705	3.845686185
IL4R	TC1600007312.hg.1	2.400136156	0.407942629
RFX8	TC0200013669.hg.1	2.397950287	0.664908359
OAF	TC1100009279.hg.1	2.394914801	2.472534784
MAGEA6	TC0X00011136.hg.1	2.391169527	1.037101959
CIT	TC1200012143.hg.1	2.389368163	3.845686185
CNTNAP1	TC1700007910.hg.1	2.387002648	2.472534784
PMP22	TC1700009850.hg.1	2.386967903	2.472534784
B4GALT6	TC1800008399.hg.1	2.384879571	0.263891671
SNAI2	TC0800010382.hg.1	2.384711928	0.407942629
PLGRKT	TC0900009461.hg.1	2.380384975	1.607801004

CAMK2N2	TC0300013381.hg.1	2.378263526	1.037101959
RP11-20B7.1	TC0300007852.hg.1	2.375454517	0.664908359
RP3-460G2.2	TC0600013384.hg.1	2.372514109	1.607801004
SSXP5	TC0X00007295.hg.1	2.366648719	1.037101959
AKAP2	TC0900012157.hg.1	2.366020379	1.037101959
---	TC1600010014.hg.1	2.364252846	0.664908359
TRPS1	TC0800011532.hg.1	2.360926562	1.037101959
---	TC1000012479.hg.1	2.359413586	0.263891671
ANKRD44	TC0200015336.hg.1	2.358572039	0.263891671
OXCT1	TC0500010599.hg.1	2.358196874	0
LEF1	TC0400011548.hg.1	2.356638955	1.607801004
CRACR2A	TC1200009649.hg.1	2.351449339	0.407942629
LAPTM5	TC0100013534.hg.1	2.351031985	0.263891671
zerflorbu	TC1100010525.hg.1	2.350837934	3.845686185
FGD1	TC0X00009780.hg.1	2.349768561	1.607801004
PHLPP1	TC1800007523.hg.1	2.348762218	1.037101959
SEMA3A	TC0700013578.hg.1	2.348164262	3.845686185
TGOLN2	TC0200013257.hg.1	2.346462656	0.263891671
HIST1H3D	TC0600011135.hg.1	2.343255334	1.607801004
LINC01317	TC0200016426.hg.1	2.340537965	3.845686185
EFNB1	TC0X00007507.hg.1	2.340221766	2.472534784
ZNF185	TC0X00008760.hg.1	2.335543528	3.845686185
	HTA2-pos-PSR12027039.hg.1	2.335357365	0.407942629
RASAL2	TC0100010735.hg.1	2.335229218	1.037101959
DOCK4	TC0700012276.hg.1	2.332603075	0.664908359
	HTA2-pos-PSR12027056.hg.1	2.332321493	1.607801004
---	TC0300007626.hg.1	2.331760585	2.472534784
ECM1	TC0100009908.hg.1	2.319417851	3.845686185
RP11-529P9.1	TC0300011796.hg.1	2.319217702	2.472534784
GOLGA7B	TC1000008591.hg.1	2.315499721	1.607801004
pawzerbu	TC1500009510.hg.1	2.295344184	3.845686185
LINC00997	TC0700007126.hg.1	2.294858977	1.037101959
CD109	TC0600008539.hg.1	2.294521513	3.845686185
GHC-362H12.3	TC0X00008022.hg.1	2.294026542	0
---	TC0100014532.hg.1	2.29028055	2.472534784
RUSC2	TC0900007082.hg.1	2.288429742	0.263891671
LOC729987	TC0100009172.hg.1	2.286761648	2.472534784
DIP2C	TC1000009516.hg.1	2.286088756	1.607801004
GABPB2	TC0100009939.hg.1	2.285982987	0.263891671
peelaby	TC1100010399.hg.1	2.284981656	1.607801004
peynoy	TC1300007941.hg.1	2.283498222	2.472534784

gluber	TC0Y00006480.hg.1	2.282783436	0.407942629
ARPC1B	TC0700013420.hg.1	2.280555057	0.263891671
RTTN	TC1800008978.hg.1	2.276884196	2.472534784
wajey	TC0600012149.hg.1	2.275735544	2.472534784
AMOTL1	TC1100013084.hg.1	2.274696656	1.037101959
CH17-262O2.2	TC0100009736.hg.1	2.261343257	3.845686185
STARD13	TC1300008573.hg.1	2.260717933	2.472534784
DNAJC9	TC1000012564.hg.1	2.257068181	0.407942629
slarskerby	TC0700008758.hg.1	2.252664559	2.472534784
ANKRD20A17P	TC0400010664.hg.1	2.249139793	2.472534784
SPIN4	TC0X00009867.hg.1	2.245951074	0.407942629
TCF19	TC0600007565.hg.1	2.239250353	1.607801004
LOC102723833	TC0100011597.hg.1	2.237951467	1.607801004
---	TC0100018501.hg.1	2.229070248	2.472534784
HIST2H3A	TC0100015701.hg.1	2.228183939	1.037101959
HIST2H3A	TC0100009877.hg.1	2.219132535	0.407942629
ATP6V1D	TC1400010759.hg.1	2.218583214	2.472534784
zarvo	TC1400008679.hg.1	2.21819034	1.037101959
---	TC2200007130.hg.1	2.208897284	2.472534784
LOC653513	TC0100015685.hg.1	2.206684053	2.472534784
FAM225A	TC0900008481.hg.1	2.205574766	3.845686185
SLC26A2	TC0500009076.hg.1	2.205415013	3.845686185
CTD-3064C13.1	TC1100010338.hg.1	2.204876603	2.472534784
RBL1	TC2000009026.hg.1	2.204435349	0.407942629
CTD-2313J17.5	TC1500010495.hg.1	2.197786381	2.472534784
ZHX3	TC2000009128.hg.1	2.192891097	1.037101959
---	TC0400007470.hg.1	2.183130441	3.845686185
zerby	TC0100007345.hg.1	2.176397762	1.037101959
DDIT3	TC1200010968.hg.1	2.176007833	1.607801004
CTD-3099C6.9	TC1900011310.hg.1	2.170408596	3.845686185
BRCA1	TC1700010763.hg.1	2.166951204	1.607801004
POTEJ	TC0200009312.hg.1	2.150843045	1.607801004
parstarby	TC1100008442.hg.1	2.149437757	0.407942629
EFNB2	TC1300009712.hg.1	2.146761123	0.263891671
HIST1H2AE	TC0600007285.hg.1	2.145656551	1.607801004
SACS	TC1300008329.hg.1	2.144458405	1.037101959
DEPDC7	TC1100007220.hg.1	2.1409287	1.607801004
jozuby	TC0800012069.hg.1	2.139810814	0.263891671
LCP1	TC1300008840.hg.1	2.131789517	0.263891671
KRTAP1-5	TC1700010648.hg.1	2.125943983	3.845686185
SKA1	TC1800007316.hg.1	2.1245368	1.607801004

IDS	TC0X00011404.hg.1	2.121445329	3.845686185
TNRC6C	TC1700009032.hg.1	2.120039654	3.845686185
	HTA2-pos-3374481_st	2.118227434	1.607801004
CPS1	TC0200010658.hg.1	2.113527426	1.607801004
INCENP	TC1100007833.hg.1	2.105822982	0.664908359
ACSL5	TC1000008926.hg.1	2.102203743	2.472534784
FBN1	TC1500009348.hg.1	2.101608829	3.845686185
	HTA2-pos-PSR12027052.hg.1	2.101078406	2.472534784
FBXO5	TC0600013602.hg.1	2.09993669	2.472534784
---	TC0400012955.hg.1	2.091911642	3.845686185
	HTA2-pos-PSR12027049.hg.1	2.08596748	1.037101959
HIST1H4D	TC0600011134.hg.1	2.085785548	3.845686185
---	TC1200011331.hg.1	2.083568936	2.472534784
NRP1	TC1000010273.hg.1	2.081530936	0.664908359
SVIP	TC1100010349.hg.1	2.069966496	1.607801004
PBX3	TC0900008763.hg.1	2.069629467	1.037101959
	HTA2-pos-PSR12027031.hg.1	2.069349747	1.607801004
	HTA2-pos-PSR12027054.hg.1	2.068798786	1.607801004
IL1RAP	TC0300009855.hg.1	2.067607728	3.845686185
KDSR	TC1800008903.hg.1	2.066737269	1.037101959
CEP290	TC1200011454.hg.1	2.063969521	1.037101959
RP11-819C21.1	TC1100012207.hg.1	2.062917558	0.664908359
	HTA2-pos-PSR12027042.hg.1	2.060266312	2.472534784
RAD51L3-RFFL	TC1700012384.hg.1	2.059824729	3.845686185
KLF14	TC0700012609.hg.1	2.058734683	2.472534784
SMC5	TC0900007520.hg.1	2.05847011	0.263891671
---	TC0200014300.hg.1	2.055086449	2.472534784
CLSPN	TC0100013700.hg.1	2.051071095	0.664908359
LHFP	TC1300008668.hg.1	2.050458673	1.607801004
ASNS	TC0700011876.hg.1	2.049009491	1.037101959
RAD18	TC0300010186.hg.1	2.047043367	1.037101959
	HTA2-pos-3374472_st	2.045016523	2.472534784
	HTA2-pos-PSR12027037.hg.1	2.042351122	1.037101959
CCNE2	TC0800011148.hg.1	2.03762938	0.263891671
IGF2R	TC0600010066.hg.1	2.034529219	1.607801004
PXDC1	TC0600010609.hg.1	2.033450681	1.607801004
KIF15	TSUnmapped00000627.hg.1	2.032164936	2.472534784
---	TC0600008564.hg.1	2.030772671	3.845686185
---	TC0500011774.hg.1	2.030597077	2.472534784
SRGAP1	TC1200007992.hg.1	2.028862133	2.472534784
SMAGP	TC1200010702.hg.1	2.020777994	2.472534784

MICAL2	TC1100012966.hg.1	2.020347325	1.607801004
HIST1H1B	TC0600011232.hg.1	2.013213253	2.472534784
DSE	TC0600014177.hg.1	2.010910794	1.037101959
LMBRD2	TC0500010493.hg.1	2.006868147	0.407942629
kuchoybu	TC0700010064.hg.1	2.001569207	2.472534784
ECE1	TC0100013205.hg.1	1.994669882	0.263891671
TRIP13	TC0500006472.hg.1	1.991707559	2.472534784
	HTA2-pos-3374446_st	1.989758492	3.845686185
sugyby	TC1100006732.hg.1	1.986699032	1.607801004
HIST1H2BE	TC0600007278.hg.1	1.982445447	1.037101959
CAD	TC0200007059.hg.1	1.981570208	1.607801004
	HTA2-pos-PSR12027030.hg.1	1.978979498	2.472534784
dywer	TC1700010410.hg.1	1.978824728	2.472534784
C3orf14	TC0300007657.hg.1	1.978574881	1.037101959
KATNAL1	TC1300008511.hg.1	1.977070294	3.845686185
KIF11	TC1000008471.hg.1	1.975372868	1.037101959
FBXL13	TC0700012111.hg.1	1.974173906	3.845686185
---	TC0600010925.hg.1	1.973511259	2.472534784
ANAPC5	TC1200012202.hg.1	1.968302101	2.472534784
	HTA2-pos-PSR11008181.hg.1	1.967141631	3.845686185
PRR12	TC1900008547.hg.1	1.966732618	2.472534784
FAM172BP	TC0300008170.hg.1	1.965284033	3.845686185
FHOD3	TC1800007096.hg.1	1.959362386	1.607801004
---	TC2000007629.hg.1	1.955045251	3.845686185
---	TC0700012196.hg.1	1.953411198	3.845686185
TRAM2	TC0600012040.hg.1	1.952441289	2.472534784
---	TC0500012872.hg.1	1.951209697	2.472534784
RANBP17	TC0500009411.hg.1	1.949459253	3.845686185
shaforbo	TC0300007403.hg.1	1.948476232	1.037101959
	HTA2-pos-PSR12027047.hg.1	1.944942494	2.472534784
WNT7B	TC2200008995.hg.1	1.943483577	3.845686185
BCL2	TC1800008891.hg.1	1.942874101	0.664908359
ARHGAP19	TC1000012580.hg.1	1.938757685	1.607801004
AP001350.4	TC1100007711.hg.1	1.938651188	0.664908359
TSPAN4	TC1100006495.hg.1	1.93859643	1.607801004
---	TC0900008537.hg.1	1.937475857	1.607801004
UGT8	TC0400008483.hg.1	1.936051729	3.845686185
storglar	TC1200011774.hg.1	1.933738439	1.607801004
---	TC1900007532.hg.1	1.933344747	1.607801004
AHNAK	TC1100011083.hg.1	1.932824749	3.845686185
RAD1	TC0500010476.hg.1	1.932019515	3.845686185

	HTA2-pos-PSR12027048.hg.1	1.928908889	3.845686185
MAPK8	TC1000007564.hg.1	1.926193314	2.472534784
KIFC1	TC0600007700.hg.1	1.924804161	2.472534784
TUBGCP3	TC1300009856.hg.1	1.924433519	3.845686185
	HTA2-pos-3374465_st	1.923309357	2.472534784
MAGEA3	TC0X00008750.hg.1	1.92101096	0.407942629
NUP155	TC0500010515.hg.1	1.917308514	3.845686185
AGAP1	TC0200011188.hg.1	1.915596671	1.607801004
ADNP2	TC1800007835.hg.1	1.914490941	2.472534784
ZNF131	TC0500013166.hg.1	1.914122837	2.472534784
MED10	TC0500009987.hg.1	1.912183311	2.472534784
	HTA2-pos-3374499_st	1.912001074	1.037101959
RAD51D	TC1700012385.hg.1	1.911716487	2.472534784
TMEM107	TC1700009676.hg.1	1.907772203	3.845686185
MMS22L	TC0600012631.hg.1	1.907632588	1.607801004
TULP4	TC0600014198.hg.1	1.902370612	3.845686185
veespee	TC0900006546.hg.1	1.900217312	2.472534784
SLC43A3	TC1100013165.hg.1	1.896032026	2.472534784
RAB36	TC2200006832.hg.1	1.881972004	2.472534784
---	TC0100011486.hg.1	1.879212654	2.472534784
	HTA2-pos-PSR12025171.hg.1	1.878117403	0.664908359
RP11-435D7.3	TC0100007783.hg.1	1.877699785	3.845686185
blofarbo	TC0300010768.hg.1	1.877320971	2.472534784
---	TC1800008683.hg.1	1.876031649	3.845686185
	HTA2-pos-PSR12027034.hg.1	1.862023998	3.845686185
---	TC0500012449.hg.1	1.860526793	3.845686185
SETD1B	TC1200009183.hg.1	1.857362827	3.845686185
PRIM1	TC1200012804.hg.1	1.856068557	2.472534784
VSIG10	TC1200012855.hg.1	1.853101409	2.472534784
DNAJC21	TC0500007123.hg.1	1.852955627	2.472534784
POLA1	TC0X00006823.hg.1	1.852187304	2.472534784
EZH2	TC0700012959.hg.1	1.849177012	3.845686185
SUSD6	TC1400007558.hg.1	1.849163875	2.472534784
BACH1	TC2100008490.hg.1	1.843995327	3.845686185
RP11-414B7.1	TC0100009288.hg.1	1.842108132	2.472534784
FN1	TC0200015650.hg.1	1.836781479	1.607801004
	HTA2-pos-PSR12027036.hg.1	1.83283151	2.472534784
RAB35	TC1200012145.hg.1	1.812985642	1.607801004
kuyore	TC1000011733.hg.1	1.810764381	2.472534784
roseebu	TC1900010700.hg.1	1.806426535	2.472534784
	HTA2-pos-PSR12027040.hg.1	1.796466044	2.472534784

CCL28	TC0500010639.hg.1	1.792562494	3.845686185
KIF20B	TC1000008406.hg.1	1.784859896	1.037101959
---	TC1300008995.hg.1	1.778787186	2.472534784
RRM2	TC0200006677.hg.1	1.776729639	2.472534784
ANTXR1	TC0200007908.hg.1	1.774297997	2.472534784
CCND1	TC1100008236.hg.1	1.768929642	3.845686185
ATAD5	TC1700007469.hg.1	1.767261872	3.845686185
NOTCH2NL	TC0100018479.hg.1	1.761358199	3.845686185
TCTN2	TC1200009252.hg.1	1.752156532	3.845686185
JMJD1C	TC1000012561.hg.1	1.746465729	1.607801004
ARHGAP19-SLIT1	TC1000012581.hg.1	1.744593396	3.845686185
EIF5A2	TC0300013104.hg.1	1.737414119	2.472534784
MED13L	TC1200012043.hg.1	1.736518162	3.845686185
FRMD4A	TC1000009851.hg.1	1.730497271	2.472534784
RPSAP52	TC1200011119.hg.1	1.721942239	3.845686185
CDC48	TC0100007841.hg.1	1.710639589	2.472534784
DNMT1	TC1900011860.hg.1	1.709049481	3.845686185
	HTA2-pos-PSR12025172.hg.1	1.704366775	3.845686185
PEA15	TC0100010284.hg.1	1.700532604	3.845686185
HIST1H1C	TC0600011127.hg.1	1.69408156	3.845686185
TXNRD1	TC1200008675.hg.1	1.693907389	2.472534784
CDK1	TC1000007748.hg.1	1.690754859	2.472534784
	HTA2-pos-3374474_st	1.689575516	3.845686185
---	TC0100008116.hg.1	1.686804762	2.472534784
RUFY2	TC1000010844.hg.1	1.682066799	2.472534784
ITGA3	TC1700008228.hg.1	1.681604381	1.607801004
	HTA2-pos-3374490_st	1.662398011	3.845686185
RAD54L	TC0100008150.hg.1	1.654518779	2.472534784
FJX1	TC1100007285.hg.1	1.636978076	2.472534784
TOPBP1	TC0300012475.hg.1	1.579282396	3.845686185
Significant - negative			
Gene ID	Prove ID	Fold change	q-value (%)
SLCO1B3	TC1200012601.hg.1	-69.92123039	0
TMEM47	TC0X00009356.hg.1	-50.62466906	0
ANXA10	TC0400009253.hg.1	-39.52995296	0
IDO1	TC0800007382.hg.1	-31.55153231	0
PAQR5	TC1500007695.hg.1	-26.83219332	1.037101959
FGFBP1	TC0400010125.hg.1	-23.65590446	0
LYPD1	TC0200014361.hg.1	-23.0266266	0

MPZL2	TC1100012474.hg.1	-22.44006837	0
CDH6	TC0500007044.hg.1	-22.35399839	0
PDGFRL	TC0800006873.hg.1	-18.39055992	0
TMTC1	TC1200010252.hg.1	-17.60790974	0
OASL	TC1200012190.hg.1	-17.4689259	0.333076753
ZFH4-AS1	TC0800012431.hg.1	-17.23853179	0
---	TC1900007609.hg.1	-16.93573271	1.607801004
CXCR4	TC0200014414.hg.1	-15.95089164	1.037101959
SORBS2	TC0400012644.hg.1	-15.93295917	0
PKP2	TC1200010341.hg.1	-15.58371723	0
TNFSF10	TC0300013146.hg.1	-14.83042462	0
GABRE	TC0X00011121.hg.1	-14.64944903	0
RSAD2	TC0200016402.hg.1	-14.40578128	1.037101959
FOXA1	TC1400008981.hg.1	-14.35617325	0
LINC00470	TC1800007879.hg.1	-14.28743883	0
RP11-283C24.1	TC1700007241.hg.1	-14.24839653	0
OAS1	TC1200012708.hg.1	-13.87551262	0.333076753
CCL5	TC1700010447.hg.1	-13.78859209	2.472534784
NUP210	TC0300010329.hg.1	-13.66137777	0
TM7SF2	TC1100013040.hg.1	-13.07662803	0
CST1	TC2000008682.hg.1	-12.16275376	1.607801004
CST4	TC2000008680.hg.1	-11.88012958	2.472534784
DDX60	TC0400012366.hg.1	-11.67436628	0.333076753
IFIT1	TC1000008400.hg.1	-11.54314279	0.664908359
SCDP1	TC1700007240.hg.1	-11.33267211	0
OCLN	TC0500007681.hg.1	-10.5117199	0
LOC647859	TC0500011056.hg.1	-10.36686781	0
AKR1C1	TC1000012427.hg.1	-10.35065504	0.407942629
NPY1R	TC0400012305.hg.1	-10.2934795	0
LOC101928161	TC0200009393.hg.1	-10.1967854	0.333076753
TMEM171	TC0500007761.hg.1	-9.889337207	0
CCNA1	TC1300006879.hg.1	-9.806756117	0.333076753
HTR1D	TC0100013272.hg.1	-9.691857324	0
CST2	TC2000008684.hg.1	-9.072157373	3.845686185
DHCR7	TC1100011514.hg.1	-8.964402953	0
RANBP3L	TC0500010498.hg.1	-8.832687174	0.333076753
SLC38A4	TC1200010531.hg.1	-8.752308454	0.333076753
MX1	TC2100007208.hg.1	-8.703204324	2.472534784
DDIT4	TC1000007990.hg.1	-8.625730152	0.333076753
INSIG1	TC0700009807.hg.1	-8.603069544	0
RBPM52	TC1500009756.hg.1	-8.579926764	0

SCD	TC1000008643.hg.1	-8.456784213	0
XAF1	TC1700006709.hg.1	-8.453903631	3.845686185
TGFBI	TC0500008736.hg.1	-8.321996414	0
RGS4	TC0100010393.hg.1	-8.264178028	1.607801004
OLMALINC	TC1000008646.hg.1	-8.008167129	0
IFIT2	TC1000008396.hg.1	-8.003220548	1.607801004
GPR87	TC0300012814.hg.1	-7.789128488	0
ADAM23	TC0200010577.hg.1	-7.760526323	0
KRT17	TC1700010682.hg.1	-7.42517228	0.664908359
GBP4	TC0100014855.hg.1	-7.370834677	0.333076753
TIMP3	TC2200007150.hg.1	-7.36160751	2.472534784
MVD	TC1600011221.hg.1	-7.301018151	0
ITGB4	TC1700008920.hg.1	-7.178825933	0
FDFT1	TC0800006760.hg.1	-7.067095967	0
---	TC2200008523.hg.1	-7.049016586	1.607801004
TACSTD2	TC0100014340.hg.1	-7.043890587	0
ANK1	TC0800010252.hg.1	-6.695224043	0.333076753
SYT11	TC0100010140.hg.1	-6.415204847	0
DUSP1	TC0500012842.hg.1	-6.341829832	0.333076753
---	TC0100008970.hg.1	-6.335505569	0
OSBP2	TC2200007069.hg.1	-6.293468452	1.607801004
RTP4	TC0300009799.hg.1	-6.284491068	0.407942629
APOL2	TC2200008592.hg.1	-6.244807065	0
RP11-811J10.1	TC0500006916.hg.1	-6.06889068	0
RP11-811J10.1	TSUnmapped00000773.hg.1	-6.06889068	0
IFIH1	TC0200014772.hg.1	-6.056615532	1.037101959
OR7E14P	TC1100006955.hg.1	-6.052883149	0
---	TC1000007548.hg.1	-5.996523139	0
HERC5	TC0400008106.hg.1	-5.968647971	0.664908359
HMGCR	TC0500007804.hg.1	-5.92850838	0
JUP	TC1700010686.hg.1	-5.863303894	0.333076753
SCG2	TC0200015865.hg.1	-5.862866	1.037101959
IFIT3	TC1000008397.hg.1	-5.762244324	1.607801004
HSD17B7	TC0100010389.hg.1	-5.721994721	0.333076753
ISG15	TC0100006483.hg.1	-5.680928518	3.845686185
PNRC1	TC0600008757.hg.1	-5.63529382	0
APOL1	TC2200007242.hg.1	-5.572810772	0
LIMCH1	TC0400007345.hg.1	-5.559982466	0
RP11-397D21.1	TC0400008465.hg.1	-5.532338124	0
METTL7A	TC1200007626.hg.1	-5.525073538	0
NR2F1	TC0500008086.hg.1	-5.503831617	0

---	TC1000009537.hg.1	-5.471043715	0
PLPP4	TC1000009104.hg.1	-5.413353745	1.607801004
EPCAM	TC0200007506.hg.1	-5.372738048	0
PLBD1	TC1200010006.hg.1	-5.332262916	0.333076753
CYFIP2	TC0500009211.hg.1	-5.227514227	0
NIPSNAP1	TC2200009336.hg.1	-5.223236398	0
IDI1	TC1000009536.hg.1	-5.201763591	0
glupuby	TC1000008644.hg.1	-5.191289402	2.472534784
CHCHD10	TC2200008186.hg.1	-5.178939362	0
LOC647859	TC0500011055.hg.1	-5.070004988	1.037101959
EYA2	TC2000007545.hg.1	-5.064909531	0
KLHL13	TC0X00010607.hg.1	-5.048325732	0
RARRES3	TC1100007899.hg.1	-5.041664675	0.333076753
SLC4A11	TC2000008217.hg.1	-5.036308529	0
PLAT	TC0800010275.hg.1	-4.966708237	0.664908359
NRXN3	TC1400007774.hg.1	-4.933910914	0
SQLE	TC0800008783.hg.1	-4.93137512	0
TSPY26P	TC2000008844.hg.1	-4.925018862	0
KRT17P1	TC1700009911.hg.1	-4.91380265	1.607801004
GPRC5A	TC1200006896.hg.1	-4.913470861	0
DDX58	TC0900009825.hg.1	-4.892798943	0.333076753
SYNGR1	TC2200007398.hg.1	-4.810891736	0.333076753
SCD5	TC0400011180.hg.1	-4.753833913	0
SREBF1	TC1700009949.hg.1	-4.698510589	0
CEACAM1	TC1900010807.hg.1	-4.673081397	3.845686185
MSMO1	TC0400009221.hg.1	-4.666014638	0.333076753
LPCAT2	TC1600007931.hg.1	-4.589308638	0
MEST	TC0700009145.hg.1	-4.588190629	0.333076753
C5orf46	TC0500012394.hg.1	-4.578173591	3.845686185
C20orf96	TC2000008121.hg.1	-4.562112953	0.407942629
NCKAP5	TC0200014362.hg.1	-4.524191771	0
PCYOX1L	TC0500009061.hg.1	-4.482275264	0
ERG	TC2100008143.hg.1	-4.481853785	0.333076753
GABARAPL1	TC1200006787.hg.1	-4.476954533	0.407942629
IRF9	TC1400010584.hg.1	-4.436178756	2.472534784
RDH10	TC0800007957.hg.1	-4.434380802	0.664908359
DEPTOR	TC0800008674.hg.1	-4.395966067	0.333076753
---	TC0900008493.hg.1	-4.376318788	0.407942629
SLCO4A1	TC2000008023.hg.1	-4.341511785	0.407942629
ITGB8	TC0700006844.hg.1	-4.251486922	0.333076753
ADGRG6	TC0600009669.hg.1	-4.249182084	0.333076753

GATA3	TC1000006707.hg.1	-4.222946588	0
AKR1C3	TC1000012428.hg.1	-4.196899743	0
SHISA2	TC1300008400.hg.1	-4.190845492	0
ALDH3A1	TC1700010036.hg.1	-4.155556429	1.037101959
SREBF2	TC2200007495.hg.1	-4.137435056	0
HCFC1R1	TC1600009162.hg.1	-4.135059246	0
DHX58	TC1700010707.hg.1	-4.126649527	2.472534784
CYP51A1	TC0700013584.hg.1	-4.078395444	0
SLC12A2	TC0500008568.hg.1	-4.072790202	0
PPARG	TC0300006622.hg.1	-4.061874973	0
RASSF2	TC2000008267.hg.1	-4.057536295	0
FASN	TC1700012093.hg.1	-4.048301295	0
FZD7	TC0200010473.hg.1	-4.02323358	0.664908359
SMAD6	TC1500007619.hg.1	-4.014352346	0
LOC105369364	TC1100008206.hg.1	-3.978748616	2.472534784
---	TC2100007247.hg.1	-3.953441746	0
PTGS1	TC0900008660.hg.1	-3.934294398	0.333076753
SNRPN	TC1500010698.hg.1	-3.926974782	0
PAK3	TC0X00008125.hg.1	-3.880845726	0
ACSL3	TC0200010907.hg.1	-3.865488734	0
SLC29A2	TC1100011286.hg.1	-3.841819309	1.607801004
HIGD2A	TC0500009587.hg.1	-3.836717831	0.333076753
SPINT1	TC1500006972.hg.1	-3.82244833	0.333076753
IGFBP3	TC0700010965.hg.1	-3.783321817	0.407942629
RGCC	TC1300006979.hg.1	-3.755787443	3.845686185
CHD7	TC0800007774.hg.1	-3.74480237	0.333076753
RNA5S11	TC0100017636.hg.1	-3.740944338	2.472534784
RNA5S12	TC0100017637.hg.1	-3.740944338	2.472534784
RNA5S13	TC0100017638.hg.1	-3.740944338	2.472534784
RNA5S14	TC0100017639.hg.1	-3.740944338	2.472534784
RNA5S15	TC0100017640.hg.1	-3.740944338	2.472534784
RNA5S16	TC0100017641.hg.1	-3.740944338	2.472534784
SNORD116-2	TC1500006574.hg.1	-3.722180884	0
AZIN2	TC0100007705.hg.1	-3.710948981	0.664908359
LPIN1	TC0200016403.hg.1	-3.692614526	0
LINC01356	TC0100015307.hg.1	-3.692469489	0.333076753
HSD17B7P2	TC1000007346.hg.1	-3.678724364	1.607801004
DUSP4	TC0800010002.hg.1	-3.670690984	1.037101959
TSPAN1	TC0100008145.hg.1	-3.665051151	0.407942629
FUZ	TC1900012001.hg.1	-3.647946319	0
CIB2	TC1500010134.hg.1	-3.644203649	0.333076753

IGFBP5	TC0200015678.hg.1	-3.626592759	1.607801004
CYP51A1P2	TC1300008470.hg.1	-3.602580081	0
TLE4	TC0900007680.hg.1	-3.588439672	0
IRF1	TC0500012017.hg.1	-3.587959859	0.333076753
C8orf4	TC0800007389.hg.1	-3.569941047	2.472534784
PDE7B	TC0600009545.hg.1	-3.547904065	0.333076753
MPI	TC1500007860.hg.1	-3.538020727	0
CDK15	TC0200010467.hg.1	-3.537447532	1.037101959
SLC7A2	TC0800006869.hg.1	-3.530219363	1.037101959
SPRY1	TC0400008628.hg.1	-3.521909489	1.037101959
AKR1C2	TC1000012516.hg.1	-3.512790813	0.664908359
STARD4	TC0500011702.hg.1	-3.511909903	0
TRIM69	TC1500010731.hg.1	-3.496170597	1.607801004
---	TC0600011144.hg.1	-3.488736573	2.472534784
PGF	TC1400009705.hg.1	-3.482475412	0
LOC101927571	TC1800008264.hg.1	-3.478920795	1.037101959
PLEKHH1	TC1400007495.hg.1	-3.442776238	0
PTPN13	TC0400008041.hg.1	-3.429747021	0
RNA5SP149	TC0300013282.hg.1	-3.389191917	1.607801004
SLC27A2	TC1500007196.hg.1	-3.388445538	2.472534784
RNF122	TC0800010081.hg.1	-3.375607506	0.333076753
TEKT4P2	TC2100007534.hg.1	-3.375156152	1.607801004
RAB26	TC1600006593.hg.1	-3.3738005	0
RDH11	TC1400010765.hg.1	-3.37321085	0
RP11-463P17.1	TC1000007547.hg.1	-3.372313711	0.333076753
HMGCS1	TC0500010635.hg.1	-3.369522517	0.407942629
SCARB1	TC1200012327.hg.1	-3.367382642	0
SMOX	TC2000006571.hg.1	-3.363355049	0.664908359
ALDOC	TC1700010200.hg.1	-3.355952974	0.407942629
---	TC1100009723.hg.1	-3.342064515	1.607801004
AK4	TC0100008618.hg.1	-3.341050602	0.333076753
ARG2	TC1400007500.hg.1	-3.337297963	0.333076753
SAMD9L	TC0700011797.hg.1	-3.337233193	3.845686185
LDLR	TC1900007012.hg.1	-3.33298887	1.037101959
SPINT2	TC1900011725.hg.1	-3.312953797	0.407942629
TDRKH	TC0100015803.hg.1	-3.284938058	0
---	TC1200009654.hg.1	-3.283659991	1.607801004
MICB	TC0600007585.hg.1	-3.282799564	0.407942629
RP11-539L10.3	TC0400009914.hg.1	-3.275378387	0
ARL15	TC0500010731.hg.1	-3.268539578	0.333076753
LOC389641	TC0800007012.hg.1	-3.268064219	1.607801004

TCP11L2	TC1200008726.hg.1	-3.265416272	0.333076753
PLEKHA2	TC0800007362.hg.1	-3.253485032	0.333076753
SECTM1	TC1700012110.hg.1	-3.247353068	0.664908359
RP3-331H24.7	TC0600014307.hg.1	-3.242588237	0
ESR2	TC1400009402.hg.1	-3.235036523	0.664908359
SNORD8	TC1400008633.hg.1	-3.228956488	1.037101959
ZNF488	TC1000010548.hg.1	-3.22713851	0.407942629
C2CD4A	TC1500007463.hg.1	-3.224088658	0.333076753
SMPDL3B	TC0100007542.hg.1	-3.223305095	0.407942629
slukeebu	TC0300013147.hg.1	-3.208523945	1.037101959
RP11-149I23.3	TC1000008395.hg.1	-3.188550543	1.037101959
ACOT13	TC0600007203.hg.1	-3.187606402	1.607801004
LSS	TC2100008462.hg.1	-3.182413571	0
RP11-80B9.1	TC0100012158.hg.1	-3.179099674	0.333076753
---	TC1600008180.hg.1	-3.174916537	2.472534784
CPVL	TC0700010604.hg.1	-3.168651693	0.664908359
TLR3	TC0400009543.hg.1	-3.167857632	1.607801004
GRAMD3	TC0500008539.hg.1	-3.160693557	0
MIR7641-2	TC0600010160.hg.1	-3.159462918	1.037101959
SLITRK4	TC0X00011012.hg.1	-3.154157424	0.333076753
RP5-1092A3.4	TC0100013473.hg.1	-3.151794013	1.037101959
NETO1	TC1800009011.hg.1	-3.150802517	3.845686185
MAOA	TC0X00007053.hg.1	-3.143771257	0.333076753
SLC5A3	TC2100008496.hg.1	-3.142094708	0
ARRB1	TC1100011643.hg.1	-3.134044866	0
VGLL3	TC0300011706.hg.1	-3.109554709	0
NRSN2-AS1	TC2000008123.hg.1	-3.108113274	2.472534784
---	TC0400012899.hg.1	-3.09660815	1.037101959
MN1	TC2200008346.hg.1	-3.095415693	0.664908359
PFKFB4	TC0300013970.hg.1	-3.094709879	0.333076753
FBXO44	TC0100006861.hg.1	-3.083758064	0.333076753
ARNTL	TC1100006899.hg.1	-3.07906431	2.472534784
LTBR	TC1200006616.hg.1	-3.078565648	0.333076753
ZFP14	TC1900010521.hg.1	-3.063114048	0
CPE	TC0400009223.hg.1	-3.051912112	0.333076753
SC5D	TC1100009306.hg.1	-3.03702405	0.333076753
---	TC0800010050.hg.1	-3.031316517	0.333076753
GNE	TC0900009978.hg.1	-3.030671533	0.407942629
NIPAL1	TC0400012792.hg.1	-3.029974881	0.333076753
JAM2	TC2100006784.hg.1	-3.024390651	2.472534784
ZNF204P	TC0600011194.hg.1	-3.021870494	1.607801004

SIX1	TC1400009351.hg.1	-3.021336069	0
NSDHL	TC0X00008759.hg.1	-3.006190983	0.333076753
ASPHD2	TC2200006947.hg.1	-2.998577132	1.607801004
MTUS1	TC0800009735.hg.1	-2.991667486	1.607801004
AK4P3	TC1200010290.hg.1	-2.986383963	1.037101959
PECAM1	TC1700011442.hg.1	-2.985485889	3.845686185
SALL2	TC1400008637.hg.1	-2.985075318	0.333076753
IDH1	TC0200015578.hg.1	-2.977985371	0
SHISA3	TC0400007371.hg.1	-2.967265802	3.845686185
IL17RD	TC0300011264.hg.1	-2.962989301	0.333076753
HS3ST1	TC0400010058.hg.1	-2.958665128	2.472534784
C5orf63	TC0500011943.hg.1	-2.945908593	0.333076753
APOL3	TC2200008588.hg.1	-2.942035184	2.472534784
LEPROTL1	TC0800012287.hg.1	-2.937458222	0
CLCN6	TC0100018166.hg.1	-2.935448271	0.407942629
SLC16A13	TC1700006721.hg.1	-2.935063399	0
GACAT2	TC1800008013.hg.1	-2.930913215	0.333076753
LRP5	TC1100008181.hg.1	-2.92913056	1.037101959
FAM169A	TC0500013328.hg.1	-2.926277661	0.333076753
MFAP3	TC0500013260.hg.1	-2.92123381	2.472534784
ALDH7A1	TC0500011924.hg.1	-2.920794789	0
H2AFJ	TC1200006946.hg.1	-2.907949066	1.037101959
TSPAN2	TC0100015364.hg.1	-2.907081968	1.607801004
RNU4-1	TC1200012156.hg.1	-2.905320856	1.607801004
RNF208	TC0900012042.hg.1	-2.888304807	0
MXD4	TC0400009765.hg.1	-2.882908071	0
---	TC1000012080.hg.1	-2.882284009	0.407942629
VTRNA2-1	TC0500012123.hg.1	-2.882019473	3.845686185
CCNJL	TC0500013392.hg.1	-2.877240533	0.333076753
HHLA3	TC0100008696.hg.1	-2.874451954	2.472534784
NOC4L	TC1200009467.hg.1	-2.867540773	0.333076753
EVL	TC1400008193.hg.1	-2.867143607	0.407942629
FDPS	TC0100010123.hg.1	-2.849184736	0
doywawbo	TC0500011468.hg.1	-2.845979789	2.472534784
GP1BB	TC2200006614.hg.1	-2.824292806	1.037101959
CYP2S1	TC1900008141.hg.1	-2.820970019	1.037101959
SYT14	TC0100011463.hg.1	-2.818113726	1.037101959
GLS	TC0200010275.hg.1	-2.815398552	0.333076753
WDR72	TC1500009478.hg.1	-2.811775675	0.333076753
NAT6	TC0300013983.hg.1	-2.811057407	0.333076753
FAM213A	TC1000008234.hg.1	-2.809387572	0.333076753

TMEM53	TC0100013983.hg.1	-2.794748899	2.472534784
LOXL1	TC1500007829.hg.1	-2.793237184	0.407942629
LOC100506990	TC0800012273.hg.1	-2.790772295	0.333076753
RP5-890E16.2	TC1700010976.hg.1	-2.790667677	1.037101959
SPAG4	TC2000007224.hg.1	-2.788989333	1.037101959
CCNG1	TC0500009319.hg.1	-2.787614054	0.407942629
RP11-46H11.11	TC1200012547.hg.1	-2.7863534	1.607801004
javuby	TC0800010049.hg.1	-2.784440247	1.037101959
---	TC0300006624.hg.1	-2.783668343	0.333076753
GSTT2	TC2200008201.hg.1	-2.777727515	1.607801004
ACACA	TC1700010488.hg.1	-2.777308618	0
RNA5SP355	TC1200007174.hg.1	-2.772536109	3.845686185
AK4P1	TC1700007480.hg.1	-2.769403464	2.472534784
COL4A5	TC0X00008084.hg.1	-2.768444468	3.845686185
ZNF605	TC1200012877.hg.1	-2.762725228	2.472534784
HOMEZ	TC1400010716.hg.1	-2.760856047	0.664908359
RHPN2	TC1900010375.hg.1	-2.757791396	0.664908359
GRAMD1A	TC1900007829.hg.1	-2.754894842	0.333076753
C14orf1	TC1400009732.hg.1	-2.752324994	0.407942629
DNAJC28	TC2100007999.hg.1	-2.752142491	1.037101959
PIK3C2B	TC0100017029.hg.1	-2.743380847	0.664908359
NEDD9	TC0600010810.hg.1	-2.742110894	0.664908359
---	TC1300007289.hg.1	-2.738772788	2.472534784
---	TC0100015077.hg.1	-2.730056546	2.472534784
KCNJ16	TC1700008768.hg.1	-2.726328049	0.407942629
PDCD2L	TC1900011708.hg.1	-2.721195924	0.333076753
spoberbo	TC0400009222.hg.1	-2.719091437	3.845686185
SCARNA22	TC0400006549.hg.1	-2.718256943	2.472534784
GSTT2	TC2200006878.hg.1	-2.702728947	0.664908359
ZFP82	TC1900010523.hg.1	-2.7007534	0.333076753
TM2D2	TC0800010193.hg.1	-2.691744856	0
---	TC0600011408.hg.1	-2.690340449	0.664908359
IRF6	TC0100017172.hg.1	-2.684868631	0.664908359
---	TC0300010670.hg.1	-2.684445595	3.845686185
LGMN	TC1400010012.hg.1	-2.681471649	1.037101959
FAM174B	TC1500010929.hg.1	-2.678928048	0.333076753
snerflee	TC0500012472.hg.1	-2.673611326	1.607801004
ACAT2	TC0600010057.hg.1	-2.67033054	0.407942629
DCLK1	TC1300008609.hg.1	-2.664820147	1.607801004
	HTA2-pos-PSR05025584.hg.1	-2.662298801	0
FLJ46906	TC0600009615.hg.1	-2.662032313	1.607801004

LPCAT3	TC1200009768.hg.1	-2.662003559	0.333076753
FAM60A	TC1200010281.hg.1	-2.64726172	1.037101959
EXPH5	TC1100012230.hg.1	-2.643672868	0.333076753
APOL6	TC2200007214.hg.1	-2.641421283	1.607801004
MIR7641-2	TC1000009517.hg.1	-2.635933243	3.845686185
RP11-492D6.3	TC1500008611.hg.1	-2.632157072	0.407942629
NUP50-AS1	TC2200008965.hg.1	-2.631283751	1.037101959
SLC25A1	TC2200007976.hg.1	-2.63115274	0
ACOT2	TC1400007647.hg.1	-2.631037388	0.407942629
ABCG1	TC2100007241.hg.1	-2.625899285	0.664908359
GMPR2	TC1400006732.hg.1	-2.621210713	0
---	TC2000008452.hg.1	-2.614944965	0.664908359
MVK	TC1200008803.hg.1	-2.607018674	3.845686185
MAP2K6	TC1700008757.hg.1	-2.60427792	0.664908359
ZFYVE21	TC1400008415.hg.1	-2.60379193	0
SNORD116-19	TC1500010700.hg.1	-2.591852737	1.607801004
ECH1	TC1900011940.hg.1	-2.586716	0.333076753
EPHX1	TC0100011770.hg.1	-2.586343984	1.037101959
kleylaw	TC0900007683.hg.1	-2.583232804	1.037101959
RNU4-61P	TC0100008223.hg.1	-2.57987977	1.607801004
GPI	TC1900011707.hg.1	-2.57843379	1.037101959
---	TC0700010406.hg.1	-2.576219167	1.037101959
ACBD7	TC1000012525.hg.1	-2.571236534	1.607801004
SYNE2	TC1400007430.hg.1	-2.570394858	0.407942629
RPP25L	TC0900009908.hg.1	-2.566858764	0.407942629
GULP1	TC0200010236.hg.1	-2.566369972	0.333076753
PTGER4	TC0500007231.hg.1	-2.566190016	1.607801004
TLCD1	TC1700010209.hg.1	-2.565253973	2.472534784
RP11-395P16.1	TC0300007307.hg.1	-2.556769612	0
DYRK1B	TSUnmapped00000019.hg.1	-2.551482359	1.037101959
EXD2	TC1400007547.hg.1	-2.549791004	0.333076753
SDHAF3	TC0700008430.hg.1	-2.5333007	0.333076753
SIAE	TC1100012681.hg.1	-2.530529279	1.037101959
NAPEPLD	TC0700012115.hg.1	-2.530219565	0.664908359
ATP8A1	TC0400010558.hg.1	-2.528774835	1.607801004
SLAIN1	TC1300007565.hg.1	-2.524117522	0.664908359
LOC100190987	TC1500009210.hg.1	-2.523859472	1.607801004
RP11-7I15.3	TC1100008547.hg.1	-2.521137552	0.407942629
VIPR1	TC0300007161.hg.1	-2.519935255	3.845686185
ZNF580	TC1900011804.hg.1	-2.515701791	1.037101959
PTGR2	TC1400010624.hg.1	-2.514363382	1.607801004

LGALS1	TC0200007803.hg.1	-2.512067679	2.472534784
SSPN	TC1200012610.hg.1	-2.510036192	3.845686185
SLC25A23	TC1900009431.hg.1	-2.504722022	0.664908359
TSPAN8	TC1200011251.hg.1	-2.50390993	2.472534784
ZFHX4	TC0800008011.hg.1	-2.50232527	0.664908359
---	TC2200008593.hg.1	-2.500977509	3.845686185
CFH	TC0100011064.hg.1	-2.500889822	2.472534784
ZMYM2	TC1300006481.hg.1	-2.499052714	0.664908359
RNA5SP141	TC0300012508.hg.1	-2.499010708	2.472534784
SNORA47	TC0500011203.hg.1	-2.498349246	1.607801004
TBX15	TC0100015445.hg.1	-2.496644802	1.037101959
RGS5	TC0100016218.hg.1	-2.496260507	2.472534784
GAB2	TC1100011744.hg.1	-2.493958283	0.333076753
GARNL3	TC0900012173.hg.1	-2.492062066	0.333076753
NLN	TC0500007607.hg.1	-2.491837519	0.664908359
FAM60CP	TC1800008837.hg.1	-2.488603116	3.845686185
FAM85A	TC0800012271.hg.1	-2.476934411	0.407942629
LINC01599	TC1400010749.hg.1	-2.475564863	1.607801004
IMPA2	TC1800006715.hg.1	-2.469487929	0.664908359
TBC1D10A	TC2200009338.hg.1	-2.463427905	2.472534784
MFI2-AS1	TC0300010046.hg.1	-2.462020743	0.407942629
LXN	TC0300012943.hg.1	-2.458704464	1.037101959
FBXO17	TC1900011944.hg.1	-2.458538731	1.037101959
REEP4	TC0800009830.hg.1	-2.456891533	2.472534784
---	TSUnmapped00000920.hg.1	-2.454826961	0.407942629
ZNF260	TC1900010528.hg.1	-2.447175667	0.333076753
PTOV1	TC1900008560.hg.1	-2.446652711	0.407942629
PDCD4	TC1000008904.hg.1	-2.445406267	1.037101959
RNU7-51P	TC1400007838.hg.1	-2.444459213	1.037101959
TENM3	TC0400009431.hg.1	-2.442121677	1.607801004
HDHD3	TC0900011259.hg.1	-2.439101846	1.037101959
NUDCD2	TC0500013395.hg.1	-2.436890062	0.664908359
LINC00899	TC2200008999.hg.1	-2.435618062	3.845686185
RFX7	TC1500009514.hg.1	-2.431175711	0.333076753
---	TC0X00008127.hg.1	-2.430540207	0.333076753
SNORD59	TC0200015296.hg.1	-2.423722731	2.472534784
SNORA22	TC0700007814.hg.1	-2.422488807	1.607801004
AP1S3	TC0200015869.hg.1	-2.419913814	2.472534784
SNORA71C	TC2000009072.hg.1	-2.416973519	1.037101959
YPEL3	TC1600009952.hg.1	-2.416136005	1.037101959
KIAA1804	TC0100012002.hg.1	-2.413490671	1.607801004

	HTA2-pos-3234819_st	-2.413469062	1.607801004
TMEM187	TC0X00008811.hg.1	-2.411264923	1.607801004
	HTA2-neg-47420419_st	-2.410612483	2.472534784
ABHD4	TC1400006652.hg.1	-2.40891335	3.845686185
TRIM5	TC1100009940.hg.1	-2.402107695	0.407942629
sokuma	TC1500009383.hg.1	-2.394788781	1.607801004
RP1-72A23.1	TC0600008756.hg.1	-2.394738015	0.664908359
SPOCK3	TC0400012350.hg.1	-2.394653361	1.037101959
TCF7L1	TC0200008236.hg.1	-2.392933686	3.845686185
LINC-PINT	TC0700013625.hg.1	-2.390593224	2.472534784
seysawbu	TC0900008385.hg.1	-2.388709506	2.472534784
SLC16A14	TC0200015971.hg.1	-2.387391359	1.037101959
DPYSL2	TC0800007086.hg.1	-2.386871391	0
CTA-415G2.2	TC2200007153.hg.1	-2.386015916	1.607801004
IKBKB	TC0800007435.hg.1	-2.385893258	0
VDAC3	TC0800007440.hg.1	-2.381237743	0.333076753
PAIP2	TC0500008814.hg.1	-2.379289518	0.333076753
EPHB4	TC0700012016.hg.1	-2.378166679	1.607801004
RP11-77P16.4	TC0300013868.hg.1	-2.377788535	2.472534784
MKNK2	TC1900009201.hg.1	-2.376858469	2.472534784
ZNF620	TC0300007123.hg.1	-2.373689945	0.333076753
CYYR1	TC2100007816.hg.1	-2.37365128	0.664908359
ADAMTS15	TC1100009533.hg.1	-2.369481669	0.664908359
PROSC	TC0800007309.hg.1	-2.367603509	1.037101959
---	TSUnmapped00001000.hg.1	-2.366419479	0.664908359
RBP4	TC1000011450.hg.1	-2.362632107	1.607801004
ESRP2	TC1600010676.hg.1	-2.361947395	2.472534784
DPYSL3	TC0500012388.hg.1	-2.359807483	2.472534784
jerjerby	TC1200012560.hg.1	-2.359679357	1.607801004
RP11-126K1.8	TC0100009953.hg.1	-2.359460741	1.037101959
SARAF	TC0800010016.hg.1	-2.358937999	1.037101959
SNORA22	TC0700007796.hg.1	-2.353227553	1.607801004
SCARNA9L	TC0X00009217.hg.1	-2.346265187	0.664908359
PANK3	TC0500013399.hg.1	-2.343386629	0.407942629
PRR34-AS1	TC2200009286.hg.1	-2.341803189	2.472534784
RERG	TC1200012768.hg.1	-2.338416774	1.607801004
PIK3R3	TC0100014040.hg.1	-2.337740836	2.472534784
SNORD70	TC0200010481.hg.1	-2.33678891	2.472534784
NDUFA2	TC0500012248.hg.1	-2.33410587	0.333076753
MEF2C	TC0500011418.hg.1	-2.333684855	2.472534784
DDX11-AS1	TC1200010271.hg.1	-2.332083858	3.845686185

	HTA2-pos-3234813_st	-2.331040656	1.607801004
KIF20A	TC0500008777.hg.1	-2.329577511	0.407942629
ANKLE2	TC1200012543.hg.1	-2.326133934	0.407942629
ORAI3	TC1600011386.hg.1	-2.325258054	1.607801004
Y_RNA	TC0200012356.hg.1	-2.324486021	1.607801004
RP1-20I3.3	TC0X00008403.hg.1	-2.324243949	0.664908359
KIAA0141	TC0500008917.hg.1	-2.323084422	0.664908359
SENCR	TC1100012785.hg.1	-2.319738743	0.333076753
TMEM135	TC1100008673.hg.1	-2.318606642	1.607801004
CTB-55P19.1	TC1600010206.hg.1	-2.310847412	3.845686185
ITPK1	TC1400010015.hg.1	-2.308176158	1.037101959
DLGAP1-AS1	TC1800006518.hg.1	-2.303025151	3.845686185
TGIF1	TC1800006513.hg.1	-2.301753489	0
TRIM21	TC1100009880.hg.1	-2.301626654	2.472534784
PALLD	TC0400009258.hg.1	-2.299567426	1.607801004
FAM118A	TC2200007614.hg.1	-2.298406004	0.333076753
RNU4-2	TC1200012155.hg.1	-2.298186428	2.472534784
RNF170	TC0800010299.hg.1	-2.296064097	2.472534784
FNBP1L	TC0100009064.hg.1	-2.295552881	0.664908359
RP11-380G5.2	TC1000008364.hg.1	-2.288517911	2.472534784
KREMEN1	TC2200009248.hg.1	-2.284186581	1.607801004
BCORL1	TC0X00008394.hg.1	-2.283302755	1.607801004
WDR59	TC1600010864.hg.1	-2.282942727	1.607801004
ACP6	TC0100015634.hg.1	-2.281701001	1.607801004
CTD-2022H16.3	TSUnmapped00000551.hg.1	-2.281694938	2.472534784
ACOT1	TC1400007644.hg.1	-2.278525079	3.845686185
PLPP1	TC0500010766.hg.1	-2.27787461	0.407942629
BNIP3L	TC0800007080.hg.1	-2.277068197	0.333076753
---	TC2200007099.hg.1	-2.275913274	0.333076753
41698	TC0100011665.hg.1	-2.275536667	3.845686185
---	TC1200012772.hg.1	-2.275389853	2.472534784
CRHR1-IT1	TC1700012270.hg.1	-2.266617314	0
SYNGR2	TC1700009040.hg.1	-2.264744552	2.472534784
FBXO34	TC1400007232.hg.1	-2.262179773	0.664908359
CTD-2207P18.2	TC1400009700.hg.1	-2.262026504	1.037101959
ERCC8	TC0500010872.hg.1	-2.259490122	2.472534784
EPB41L5	TC0200009078.hg.1	-2.257917332	0.407942629
---	TC0600008273.hg.1	-2.256664712	1.607801004
ISYNA1	TC1900010016.hg.1	-2.255104961	2.472534784
CABYR	TC1800006905.hg.1	-2.249555691	1.607801004
DYRK1B	TSUnmapped00000256.hg.1	-2.241282107	1.037101959

AC093818.1	TC0200016749.hg.1	-2.240507672	2.472534784
COX6B1	TC1900007871.hg.1	-2.239659117	1.037101959
FBXL2	TC0300006994.hg.1	-2.238935422	1.607801004
speezeby	TC1200006642.hg.1	-2.234322725	0.333076753
RP11-364P2.2	TC0400011739.hg.1	-2.234090172	1.037101959
ARSA	TC2200009170.hg.1	-2.233417943	2.472534784
	HTA2-pos-3706157_st	-2.233123954	1.607801004
RP11-442H21.2	TC1000010986.hg.1	-2.232134302	3.845686185
	HTA2-pos-PSR08004871.hg.1	-2.23169391	0.333076753
PPM1K	TC0400011283.hg.1	-2.231609735	3.845686185
SLC22A5	TC0500008632.hg.1	-2.229759458	0.407942629
VAMP1	TC1200009734.hg.1	-2.229278328	3.845686185
NME4	TC1600011317.hg.1	-2.226857386	0.664908359
---	TC0700011893.hg.1	-2.226731205	3.845686185
PGAM5	TC1200012731.hg.1	-2.225883239	0.407942629
SNORD60	TC1600009095.hg.1	-2.2249545	0.664908359
LOC101929897	TC0800010278.hg.1	-2.218154721	2.472534784
	HTA2-pos-3234802_st	-2.217990214	1.037101959
ABCB1	TC0700011706.hg.1	-2.216757567	0.664908359
	HTA2-pos-PSR08024263.hg.1	-2.216161214	2.472534784
SCAMP1	TC0500007868.hg.1	-2.215104867	0.333076753
FBXO27	TC1900011946.hg.1	-2.214372349	0.664908359
LY6K	TC0800009157.hg.1	-2.209546051	1.037101959
PTX3	TC0300009301.hg.1	-2.208610733	1.607801004
KCTD11	TC1700006741.hg.1	-2.205826776	3.845686185
TTI2	TC0800012406.hg.1	-2.205409918	1.037101959
CHKB	TC2200009365.hg.1	-2.203398337	1.607801004
ZNF302	TC1900007819.hg.1	-2.202850366	1.607801004
	HTA2-pos-PSR08004876.hg.1	-2.202675034	0.664908359
SNORD63	TC0500012184.hg.1	-2.199919271	1.607801004
PUDP	TC0X00009007.hg.1	-2.199330624	1.607801004
PAIP2	TC0500012203.hg.1	-2.19762643	0.664908359
CADM1	TC1100012389.hg.1	-2.193375269	1.607801004
RP11-22K10.1	TC1400009874.hg.1	-2.190994455	1.037101959
kiriru	TC1900010613.hg.1	-2.190836012	2.472534784
TRMT1L	TC0100016685.hg.1	-2.186966569	0.664908359
ANKRD1	TC1000011400.hg.1	-2.185797751	3.845686185
NUDT12	TC0500011614.hg.1	-2.184629054	1.037101959
HSD17B11	TC0400012945.hg.1	-2.184538199	0.333076753
AFMID	TC1700009042.hg.1	-2.1820519	2.472534784
---	TC0600011210.hg.1	-2.181958885	2.472534784

FAM60BP	TC1800008335.hg.1	-2.18189549	3.845686185
EPB41L1	TC2000007239.hg.1	-2.179305952	1.607801004
BCL6	TC0300013471.hg.1	-2.175760864	1.607801004
RP11-468E2.5	TC1400006719.hg.1	-2.173383729	2.472534784
LINC00987	TC1200006749.hg.1	-2.17176738	1.607801004
FZD3	TC0800007137.hg.1	-2.169402879	0.407942629
SLC50A1	TC0100010112.hg.1	-2.167934496	2.472534784
CSNK1G2	TC1900006565.hg.1	-2.167224713	0.407942629
MKL1	TC2200008781.hg.1	-2.166379261	1.607801004
DPY19L3	TC1900007744.hg.1	-2.165911182	1.037101959
RPL10P15	TC1900006952.hg.1	-2.165704889	1.607801004
AP4S1	TC1400006833.hg.1	-2.16508125	0.407942629
---	TC1200006723.hg.1	-2.163989251	1.607801004
MRPL22	TC0500009183.hg.1	-2.163306501	1.607801004
	HTA2-pos-PSR05025585.hg.1	-2.161258543	0.333076753
SELO	TC2200007792.hg.1	-2.160524988	1.607801004
blashee	TC2200007623.hg.1	-2.159256551	2.472534784
FAM117B	TC0200010502.hg.1	-2.159178476	2.472534784
RN7SL587P	TC1400009788.hg.1	-2.158555594	2.472534784
	HTA2-pos-PSR08024267.hg.1	-2.154683298	1.037101959
---	TC0800012171.hg.1	-2.154228821	1.037101959
	HTA2-pos-PSR08024264.hg.1	-2.153701537	0.333076753
RP11-79P5.9	TC0500011123.hg.1	-2.152444194	1.037101959
MPST	TC2200007277.hg.1	-2.14227868	1.607801004
RPPH1	TC1400008586.hg.1	-2.140343721	2.472534784
HMBOX1	TC0800012285.hg.1	-2.139888066	2.472534784
MOAP1	TC1400010019.hg.1	-2.13831182	0.664908359
RNA5SP335	TC1100010293.hg.1	-2.134686434	2.472534784
ZSCAN2	TC1500008154.hg.1	-2.133709841	0.407942629
RBPMS	TC0800007185.hg.1	-2.131224393	0.333076753
CHEK2	TC2200008367.hg.1	-2.128771105	3.845686185
	HTA2-pos-PSR08004875.hg.1	-2.126522078	1.037101959
SLC9A3R1	TC1700008867.hg.1	-2.119041242	1.607801004
DZIP3	TC0300008289.hg.1	-2.11599688	1.607801004
CCNG2	TC0400012818.hg.1	-2.11376379	2.472534784
	HTA2-pos-PSR05025587.hg.1	-2.110450268	1.607801004
shoytu	TC2100008464.hg.1	-2.107478018	0.664908359
	HTA2-pos-PSR08024268.hg.1	-2.106694205	0.664908359
SNORD24	TSUnmapped00000340.hg.1	-2.104442853	0.664908359
---	TSUnmapped00000845.hg.1	-2.104442853	0.664908359
CDKN2A	TC0900012219.hg.1	-2.103001676	3.845686185

CMB9-22P13.1	TC1100008020.hg.1	-2.098139472	3.845686185
MOB3A	TC1900009204.hg.1	-2.097066338	1.607801004
LINC00493	TC2000009895.hg.1	-2.094648741	2.472534784
	HTA2-pos-PSR08024262.hg.1	-2.092513601	1.037101959
CDK7	TC0500007668.hg.1	-2.084576282	0.664908359
RNF165	TC1800007220.hg.1	-2.08286572	2.472534784
UBE2WP1	TC0100009136.hg.1	-2.082520095	2.472534784
LIPA	TC1000012577.hg.1	-2.081959013	2.472534784
PPM1L	TC0300009353.hg.1	-2.081663798	2.472534784
MSI2	TC1700008378.hg.1	-2.078676137	2.472534784
MCAT	TC2200008903.hg.1	-2.078249935	1.607801004
LRRC28	TC1500008511.hg.1	-2.077552594	1.037101959
CNOT7P1	TC0X00009951.hg.1	-2.068182743	0.333076753
ANO7P1	TC0100013035.hg.1	-2.065525804	2.472534784
IRF2BPL	TC1400009766.hg.1	-2.062953425	2.472534784
LMO7	TC1300009980.hg.1	-2.06197356	2.472534784
RP1-261D10.2	TC1400009601.hg.1	-2.061677249	3.845686185
CNKSR1	TC0100007444.hg.1	-2.059395493	1.037101959
DBI	TC0200009065.hg.1	-2.05913131	1.607801004
FAM85B	TC0800009500.hg.1	-2.058404477	1.607801004
ADAM9	TC0800007367.hg.1	-2.054267656	3.845686185
PPP2R2A	TC0800007077.hg.1	-2.053482283	0.407942629
GLRX3	TC1000009345.hg.1	-2.050517894	0.407942629
RN7SL253P	TC0400009320.hg.1	-2.048390349	1.607801004
SNAPC1	TC1400010620.hg.1	-2.046693401	2.472534784
ZKSCAN7	TSUnmapped00000306.hg.1	-2.046227543	2.472534784
UQCR10	TC2200007035.hg.1	-2.045883743	0.664908359
ARSK	TC0500008121.hg.1	-2.041846859	0.407942629
AK4P6	TC0400008981.hg.1	-2.041509456	2.472534784
DNASE1	TC1600011345.hg.1	-2.041397905	1.607801004
snomorbu	TC0100014339.hg.1	-2.040883621	1.037101959
lyjee	TC0600008162.hg.1	-2.037944364	1.607801004
	HTA2-pos-PSR08004877.hg.1	-2.037574533	0.407942629
---	TSUnmapped00000997.hg.1	-2.037297498	1.037101959
SMO	TC0700009082.hg.1	-2.035855854	2.472534784
DDT	TC2200008203.hg.1	-2.032213064	1.607801004
NDUFA1	TC0X00008259.hg.1	-2.030284166	0.664908359
C11orf54	TC1100008790.hg.1	-2.030168538	3.845686185
LOC102724814	TC1400006693.hg.1	-2.029985023	3.845686185
---	TC1100012468.hg.1	-2.029191234	3.845686185
U4	TC1100012824.hg.1	-2.026866053	1.037101959

LOXL1-AS1	TC1500009995.hg.1	-2.025978691	1.607801004
	HTA2-pos-PSR08004872.hg.1	-2.025914562	1.037101959
BNIP3P1	TC1400006783.hg.1	-2.025662514	1.607801004
RNU4-59P	TC0100014934.hg.1	-2.025544808	3.845686185
FAM189B	TC0100015950.hg.1	-2.024488807	1.607801004
ATP8B2	TC0100010075.hg.1	-2.023502199	1.607801004
SDR39U1	TC1400008760.hg.1	-2.022134323	2.472534784
---	TC1100010558.hg.1	-2.021962396	2.472534784
TAF7	TC0500012271.hg.1	-2.020288976	1.037101959
SEC23A	TC1400009002.hg.1	-2.020162948	2.472534784
SDCBPP2	TC0800007912.hg.1	-2.017983903	1.607801004
AC005480.1	TC1400007664.hg.1	-2.010995124	2.472534784
	HTA2-pos-PSR08004869.hg.1	-2.010293061	1.607801004
AC027319.1	TC1900009370.hg.1	-2.007020473	3.845686185
NUMB	TC1400009649.hg.1	-2.004820863	0.664908359
HSD17B4	TC0500013219.hg.1	-2.003696731	0.664908359
RP11-157L3.10	TC0900007277.hg.1	-2.002085496	2.472534784
CBY1	TC2200007360.hg.1	-2.001576838	3.845686185
POU5F1	TC0600011406.hg.1	-2.000616881	1.607801004
FLI1	TC1100009485.hg.1	-1.998332521	3.845686185
LSM1	TC0800010154.hg.1	-1.99775431	2.472534784
	HTA2-pos-PSR19006628.hg.1	-1.996853279	1.037101959
COCH	TC1400006828.hg.1	-1.996633217	3.845686185
stertuby	TC0900007947.hg.1	-1.994927984	0.407942629
HOTAIRM1	TC0700007000.hg.1	-1.994439001	1.607801004
TSPAN6	TC0X00010329.hg.1	-1.992899788	0.333076753
ALG12	TC2200009128.hg.1	-1.990558701	2.472534784
YIF1B	TC1900010597.hg.1	-1.989402231	1.037101959
PPP1R9A	TC0700008375.hg.1	-1.989389591	2.472534784
Y_RNA	TC0600011456.hg.1	-1.989044082	2.472534784
AKAP8L	TC1900009867.hg.1	-1.985742196	1.607801004
PSME1	TC1400006718.hg.1	-1.985214641	1.607801004
PSENNEN	TC1900011713.hg.1	-1.97987132	0.664908359
PEX5L	TC0300013277.hg.1	-1.977192492	3.845686185
IP6K2	TC0300013975.hg.1	-1.976938969	1.037101959
SIMC1	TC0500009580.hg.1	-1.97418816	1.037101959
INTS9	TC0800009988.hg.1	-1.972658195	1.607801004
---	TC2100007424.hg.1	-1.971148315	2.472534784
BNIP3	TC1000012329.hg.1	-1.969724921	2.472534784
ATP7B	TC1300009004.hg.1	-1.969384306	2.472534784
	HTA2-neg-47423504_st	-1.962245431	3.845686185

FCHSD1	TC0500012285.hg.1	-1.960416349	0.407942629
AC003973.5	TC1900010167.hg.1	-1.960121046	2.472534784
SYNJ2BP-COX16	TC1400009576.hg.1	-1.955076645	3.845686185
---	TC1500007403.hg.1	-1.953414237	3.845686185
ACSF2	TC1700008254.hg.1	-1.949120453	2.472534784
IL18	TC1100012318.hg.1	-1.948372015	1.037101959
PATZ1	TC2200008477.hg.1	-1.947200801	3.845686185
PRR3	TC0600007534.hg.1	-1.945878772	2.472534784
DPM3	TC0100015943.hg.1	-1.944526416	1.607801004
MFAP1	TC1500009236.hg.1	-1.943767503	2.472534784
	HTA2-pos-PSR08004870.hg.1	-1.941161296	2.472534784
STRN3	TC1400008838.hg.1	-1.93988124	1.037101959
ZNF92	TC0700007807.hg.1	-1.939297538	3.845686185
AP5M1	TC1400007282.hg.1	-1.938867435	1.607801004
MRPL40	TC2200006601.hg.1	-1.936431991	1.607801004
	HTA2-pos-2924329_st	-1.935560854	0.407942629
KIAA1958	TC0900008467.hg.1	-1.934780184	2.472534784
---	TC0800008108.hg.1	-1.934744645	2.472534784
KIF13B	TC0800009997.hg.1	-1.933422586	3.845686185
snoU13	TC0800011307.hg.1	-1.932579148	3.845686185
BAG4	TC0800007328.hg.1	-1.931526762	2.472534784
SAMM50	TC2200009282.hg.1	-1.929934208	1.037101959
ZFP62	TC0500013109.hg.1	-1.928320245	3.845686185
PSMA3	TC1400007300.hg.1	-1.926574978	0.333076753
ALS2	TC0200015434.hg.1	-1.925315662	1.037101959
---	TC1100012080.hg.1	-1.924247003	3.845686185
RP11-546B8.5	TC0500009421.hg.1	-1.921246325	2.472534784
	HTA2-pos-3234816_st	-1.917336202	3.845686185
LBR	TC0100017488.hg.1	-1.91663307	1.037101959
BCL2L11	TC0200008870.hg.1	-1.915311217	3.845686185
AC007228.9	TC1900011538.hg.1	-1.914814983	1.607801004
RWDD2B	TC2100007852.hg.1	-1.914615021	1.607801004
GTF2E2	TC0800012404.hg.1	-1.913854075	2.472534784
	HTA2-pos-PSR08024265.hg.1	-1.913046136	1.607801004
CTC-487M23.7	TC0500008337.hg.1	-1.91023637	3.845686185
FAM127B	TC0X00011399.hg.1	-1.909808963	1.037101959
ZNF790	TC1900010538.hg.1	-1.908910659	2.472534784
PYGL	TC1400009147.hg.1	-1.908724875	0.664908359
CUL7	TC0600011857.hg.1	-1.906251096	2.472534784
---	TC0500013210.hg.1	-1.905595067	2.472534784
SNORD36	TC1300006564.hg.1	-1.905160444	3.845686185

SUSD1	TC0900011220.hg.1	-1.904393135	0.664908359
PEG10	TC0700008367.hg.1	-1.903180199	1.037101959
EFEMP1	TC0200012656.hg.1	-1.901782817	2.472534784
URB1-AS1	TC2100006920.hg.1	-1.896011327	3.845686185
GGPS1	TC0100012055.hg.1	-1.895688168	2.472534784
FAM27AP1	TC0900010312.hg.1	-1.894864803	3.845686185
	HTA2-pos-PSR22012031.hg.1	-1.894433721	1.037101959
RN7SL126P	TC0200013279.hg.1	-1.8925711	2.472534784
zoyfawbu	TC0300012835.hg.1	-1.891856506	2.472534784
PNPLA6	TC1900011654.hg.1	-1.88913395	1.607801004
PROSER3	TC1900007882.hg.1	-1.888286272	3.845686185
APBB3	TC0500013374.hg.1	-1.887773269	1.607801004
MIR3129	TC0200015205.hg.1	-1.887706754	3.845686185
ABCA13	TC0700007479.hg.1	-1.886963042	3.845686185
LOC100049716	TC1200006447.hg.1	-1.886854922	0.407942629
NPEPPS	TC1700008128.hg.1	-1.885658384	1.607801004
---	TC0500010327.hg.1	-1.88458278	1.607801004
RPL7P26	TC0600010945.hg.1	-1.884184403	2.472534784
DARS	TC0200014407.hg.1	-1.881742429	1.037101959
LOC440434	TC1700007628.hg.1	-1.881722864	2.472534784
CNOT7	TC0800012392.hg.1	-1.876866236	2.472534784
RN7SL147P	TC0300010279.hg.1	-1.874652035	3.845686185
---	TC0100017243.hg.1	-1.874153886	3.845686185
INSIG2	TC0200009049.hg.1	-1.871581016	3.845686185
EIF2B2	TC1400007695.hg.1	-1.87132482	2.472534784
CH17-258A22.4	TC1700007698.hg.1	-1.871117295	1.037101959
SIX4	TC1400009353.hg.1	-1.86998712	2.472534784
AC093673.5	TC0700012885.hg.1	-1.86710837	2.472534784
MCCC2	TC0500007729.hg.1	-1.865031503	2.472534784
---	TC1600009298.hg.1	-1.863449644	2.472534784
PACSIN2	TC2200009357.hg.1	-1.862263861	1.037101959
DCTN6	TC0800012288.hg.1	-1.861295995	1.037101959
C5orf45	TC0500013425.hg.1	-1.857275284	2.472534784
NMNAT2	TC0100016649.hg.1	-1.854935686	1.607801004
DHCR24	TC0100014276.hg.1	-1.853595782	1.607801004
COPS5	TC0800012424.hg.1	-1.853343119	1.607801004
CHMP7	TC0800007013.hg.1	-1.852262196	2.472534784
SGSM3	TC2200009276.hg.1	-1.852000087	1.607801004
ferswey	TC1400006727.hg.1	-1.851448068	2.472534784
ZNF346	TC0500009606.hg.1	-1.850644666	3.845686185
SNORD89	TC0200016719.hg.1	-1.849320681	2.472534784

TINAGL1	TC0100007645.hg.1	-1.847379162	1.037101959
YARS2	TC1200010336.hg.1	-1.846624245	1.037101959
SNORA59B	TC0100006891.hg.1	-1.844966026	2.472534784
---	TSUnmapped00000828.hg.1	-1.844966026	2.472534784
TRIM23	TC0500010930.hg.1	-1.843537377	2.472534784
tusweyby	TC0300012108.hg.1	-1.841853524	2.472534784
TTC1	TC0500009268.hg.1	-1.840578354	1.037101959
	HTA2-pos-PSR08004878.hg.1	-1.835381537	3.845686185
PLA2G16	TC1100011126.hg.1	-1.833797285	3.845686185
ETFA	TC1500010093.hg.1	-1.832476885	0.407942629
METTL22	TC1600006822.hg.1	-1.827688871	3.845686185
SNORA70	TC1900006951.hg.1	-1.826025505	3.845686185
PCCB	TC0300008912.hg.1	-1.825337619	2.472534784
	HTA2-pos-PSR19006630.hg.1	-1.821959428	1.607801004
WBP2	TC1700011773.hg.1	-1.820480348	2.472534784
SNORA71D	TC2000009073.hg.1	-1.819750718	2.472534784
SLFN11	TC1700010420.hg.1	-1.819354485	2.472534784
ATP1B1	TC0100010543.hg.1	-1.817524737	3.845686185
PRCP	TC1100011794.hg.1	-1.815884573	1.607801004
STAU2	TC0800012427.hg.1	-1.815122185	1.607801004
VIPAS39	TC1400009784.hg.1	-1.81217004	2.472534784
TUBGCP4	TC1500007057.hg.1	-1.81211561	2.472534784
ABCD4	TC1400009690.hg.1	-1.811832599	2.472534784
GALNT1	TC1800007080.hg.1	-1.810429084	3.845686185
CTD-2033A16.3	TC1600008237.hg.1	-1.807308555	3.845686185
ZNF146	TC1900007917.hg.1	-1.80392997	2.472534784
LOC440434	TC1700010516.hg.1	-1.802324977	1.607801004
SLC2A3P1	TC0500013398.hg.1	-1.79993316	1.607801004
TMEM161B-AS1	TC0500008026.hg.1	-1.799582925	1.607801004
---	TSUnmapped00000951.hg.1	-1.798817926	3.845686185
HMG20A	TC1500007939.hg.1	-1.797174919	1.607801004
PARD6A	TC1600008169.hg.1	-1.796247107	3.845686185
NDST1	TC0500009093.hg.1	-1.795602695	2.472534784
MRPS27	TC0500011095.hg.1	-1.795475334	1.607801004
SSTR5-AS1	TC1600009006.hg.1	-1.79524397	1.037101959
TBL1XR1	TC0300013215.hg.1	-1.794769203	3.845686185
HOXA10-AS	TC0700007005.hg.1	-1.79400739	3.845686185
C16orf62	TC1600007113.hg.1	-1.789312037	1.607801004
FAM109B	TC2200007508.hg.1	-1.785238614	3.845686185
FBXO22	TC1500007912.hg.1	-1.78402191	2.472534784
	HTA2-pos-PSR05010519.hg.1	-1.781762444	1.607801004

farskor	TC1700009524.hg.1	-1.781292373	2.472534784
---	TC1100011763.hg.1	-1.776737131	3.845686185
	HTA2-pos-PSR05010526.hg.1	-1.775422641	2.472534784
---	TC1400008668.hg.1	-1.772020343	2.472534784
PICK1	TC2200007331.hg.1	-1.76844079	3.845686185
FAM8A1	TC0600007092.hg.1	-1.768290535	3.845686185
AHSA1	TC1400007761.hg.1	-1.765588535	2.472534784
C14orf119	TC1400006674.hg.1	-1.76555794	1.607801004
	HTA2-pos-PSR19006627.hg.1	-1.761992154	1.607801004
	HTA2-pos-2924323_st	-1.757782619	3.845686185
LOC202181	TC0500012986.hg.1	-1.756609182	2.472534784
RP11-149F8.3	TC0900007395.hg.1	-1.756094319	2.472534784
RN7SL671P	TC0400009755.hg.1	-1.755153549	2.472534784
SMDT1	TC2200009279.hg.1	-1.750541989	2.472534784
SMARCAL1	TC0200010741.hg.1	-1.748371783	2.472534784
---	TC0700007761.hg.1	-1.747094929	3.845686185
---	TC0200016404.hg.1	-1.743238845	3.845686185
---	TC1100009513.hg.1	-1.742797461	1.607801004
SOX12	TC2000006441.hg.1	-1.740852938	3.845686185
RBM12	TC2000010007.hg.1	-1.739730898	3.845686185
ACO2	TC2200007477.hg.1	-1.737365948	2.472534784
APPBP2	TC1700011319.hg.1	-1.734915022	1.037101959
---	TC0700006895.hg.1	-1.733639985	3.845686185
NDUFA6	TC2200008859.hg.1	-1.732813835	1.037101959
CAMLG	TC0500008702.hg.1	-1.73180821	2.472534784
TAF9B	TC0X00010136.hg.1	-1.730503269	2.472534784
MAT2B	TC0500009321.hg.1	-1.73039132	1.037101959
TRAFD1	TC1200008906.hg.1	-1.726316312	3.845686185
NHP2	TC0500013010.hg.1	-1.722938652	2.472534784
ATXN10	TC2200007626.hg.1	-1.716894828	3.845686185
PCIF1	TC2000007512.hg.1	-1.714440101	2.472534784
C14orf166	TC1400007155.hg.1	-1.714161849	0.664908359
---	TC1000009506.hg.1	-1.712429092	3.845686185
PPME1	TC1100008409.hg.1	-1.711243427	2.472534784
---	TC1700011102.hg.1	-1.70713561	3.845686185
DCAF5	TC1400009538.hg.1	-1.706818911	2.472534784
RP11-229E13.4	TC1700007860.hg.1	-1.706686805	3.845686185
ZNF567	TC1900007950.hg.1	-1.701635555	1.607801004
ILF3-AS1	TC1900009641.hg.1	-1.695365695	3.845686185
SLC38A9	TC0500010779.hg.1	-1.693688135	3.845686185
wayuro	TC1100008551.hg.1	-1.69085731	2.472534784

	HTA2-pos-3520361_st	-1.69073142	2.472534784
XPO7	TC0800006963.hg.1	-1.686615167	2.472534784
TBCA	TC0500011212.hg.1	-1.685150566	1.607801004
KLHL24	TC0300009673.hg.1	-1.685009918	2.472534784
GLRX5	TC1400008098.hg.1	-1.682406894	1.607801004
---	TC0800012141.hg.1	-1.682300583	3.845686185
KLHL23	TC0200016563.hg.1	-1.677856888	3.845686185
SRP19	TC0500013212.hg.1	-1.652395649	3.845686185
IPO8	TC1200010264.hg.1	-1.647706367	3.845686185
	HTA2-pos-PSR05010521.hg.1	-1.647079281	2.472534784
ZMAT2	TC0500013238.hg.1	-1.642912714	2.472534784
CDY3P	TC0Y00006998.hg.1	-1.641990371	2.472534784
IDH3G	TC0X00011173.hg.1	-1.631764094	3.845686185
FUT8-AS1	TC1400009449.hg.1	-1.631566171	3.845686185
---	TC0600011432.hg.1	-1.630753152	2.472534784
---	TSUnmapped00000847.hg.1	-1.624907113	3.845686185
TRAM1	TC0800010765.hg.1	-1.580537209	2.472534784

Table SII. A total of 561 genes significantly impacted by SOX4 re-expression.

Significant - positive			
Gene ID	Probe ID	Fold Change	q-value (%)
LOC100505817	TC1800007655.hg.1	34.60823192	0
SOX4	TC0600007158.hg.1	30.47523977	0
ZFHX4-AS1	TC0800012431.hg.1	20.8106819	0
EDN1	TC0600006967.hg.1	20.56945028	2.27376244716355
RGS4	TC0100010393.hg.1	19.70895893	1.31301775117895
ANKRD1	TC1000011400.hg.1	18.27652646	0.793397960286857
---	TC0700008673.hg.1	18.14874228	0.582651627085661
TRBV25-1	TC0700013479.hg.1	17.11391193	0
MFAP2	TC0100013071.hg.1	16.31863711	0
	HTA2-neg-47420566_st	15.58510173	0
MEST	TC0700009145.hg.1	12.83282595	0
GRPR	TC0X00006686.hg.1	12.34483515	0
LYPD1	TC0200014361.hg.1	11.09380218	1.31301775117895
TLE4	TC0900007680.hg.1	10.18814858	0
RASSF2	TC2000008267.hg.1	10.03625644	0
H19	TC1100009780.hg.1	9.254831135	4.2920930172056
CYP2S1	TC1900008141.hg.1	8.586429464	0
PKP2	TC1200010341.hg.1	8.372696519	0
RP11-431J24.2	TC0X00009145.hg.1	8.014848962	0
MEX3B	TC1500010233.hg.1	7.926069769	0.582651627085661
---	TC0X00009147.hg.1	7.902075698	0
LBH	TC0200016424.hg.1	7.766527332	4.2920930172056
41701	TC0200015670.hg.1	7.437594016	0
kleylaw	TC0900007683.hg.1	7.334657843	0
RELN	TC0700012126.hg.1	7.20133476	4.2920930172056
MKX	TC1000010132.hg.1	6.935199256	1.31301775117895
CADM4	TC1900010855.hg.1	6.763846878	0
---	TC0X00006693.hg.1	6.736394677	1.99562636799982
RP11-80B9.1	TC0100012158.hg.1	6.175143516	4.2920930172056
NETO1	TC1800009011.hg.1	6.110978195	1.31301775117895
---	TC0600008503.hg.1	5.891014075	0
MYB	TC0600009534.hg.1	5.829947938	0.793397960286857
F2RL2	TC0500011194.hg.1	5.653666042	0.793397960286857
DBN1	TC0500012975.hg.1	5.598628038	0
TEAD2	TC1900012000.hg.1	5.501475745	3.12134800224461
SMO	TC0700009082.hg.1	5.492855476	0.582651627085661
	HTA2-neg-47423235_st	5.366262643	1.31301775117895
berpoby	TC0700008994.hg.1	5.268530667	1.99562636799982

RNF122	TC0800010081.hg.1	5.154682852	0.793397960286857
PLCB4	TC2000006674.hg.1	5.008661107	0.582651627085661
CENPV	TC1700009888.hg.1	4.913198975	1.31301775117895
GP1BB	TC2200006614.hg.1	4.86570549	0
CYFIP2	TC0500009211.hg.1	4.788383383	0.582651627085661
MCAM	TC1100012520.hg.1	4.582719552	0.582651627085661
SLC38A5	TC0X00009611.hg.1	4.496546329	0.793397960286857
MATN2	TC0800008324.hg.1	4.480602265	3.12134800224461
---	TC0300011888.hg.1	4.461266504	0.793397960286857
---	TC0400011892.hg.1	4.385725954	3.12134800224461
CD24	TC0600012747.hg.1	4.379410442	0
---	TC0200015085.hg.1	4.351787166	0
FOXA1	TC1400008981.hg.1	4.338394761	1.31301775117895
DUSP1	TC0500012842.hg.1	4.327658523	3.12134800224461
TGIF2	TC2000009914.hg.1	4.316361409	1.31301775117895
BCAM	TC1900008286.hg.1	4.243486242	3.12134800224461
VASH2	TC0100011552.hg.1	4.219568088	4.2920930172056
AC097483.1	TC0200010786.hg.1	4.170251329	4.2920930172056
AC092057.1	TC0300007532.hg.1	4.170251329	4.2920930172056
AC022101.1	TC0500008473.hg.1	4.170251329	4.2920930172056
AC008514.1	TC0500009410.hg.1	4.170251329	4.2920930172056
AP004371.1	TC1100009537.hg.1	4.170251329	4.2920930172056
ZFH4	TC0800008011.hg.1	4.166533751	0.582651627085661
PSG9	TC1900011967.hg.1	4.140920963	0.582651627085661
CTXN1	TC1900009510.hg.1	4.137494326	3.12134800224461
ARMC4P1	TC1000007096.hg.1	4.120658771	1.31301775117895
BCL7A	TC1200009192.hg.1	4.09356272	3.12134800224461
SCARB1	TC1200012327.hg.1	4.09312956	0
SERTAD2	TC0200016679.hg.1	3.978154572	1.99562636799982
RHOBTB1	TC1000010737.hg.1	3.967944921	2.27376244716355
	HTA2-pos-3437243_st	3.876892324	3.12134800224461
DNMT3A	TC0200016643.hg.1	3.871917823	3.12134800224461
RBPMS2	TC1500009756.hg.1	3.849607433	0.793397960286857
41698	TC0100011665.hg.1	3.812203146	1.99562636799982
FAM196B	TC0500012775.hg.1	3.799439662	2.27376244716355
LMO7	TC1300009980.hg.1	3.780376698	1.31301775117895
ADGRG6	TC0600009669.hg.1	3.775569654	4.2920930172056
KIAA1958	TC0900008467.hg.1	3.771417847	0.793397960286857
SMAD6	TC1500007619.hg.1	3.706947458	3.12134800224461
ID3	TC0100013293.hg.1	3.666711268	4.2920930172056
PSG6	TC1900011963.hg.1	3.628934456	3.12134800224461

EPHB4	TC0700012016.hg.1	3.606314791	1.99562636799982
LOC101928161	TC0200009393.hg.1	3.510756654	3.12134800224461
PTGER4	TC0500007231.hg.1	3.46415624	3.12134800224461
LAYN	TC1100009024.hg.1	3.455469312	2.27376244716355
FLNC	TC0700009066.hg.1	3.436222208	0.793397960286857
HTR1D	TC0100013272.hg.1	3.431253383	1.31301775117895
FNBP1L	TC0100009064.hg.1	3.409026939	2.27376244716355
RAB3B	TC0100014191.hg.1	3.389478532	4.2920930172056
PPME1	TC1100008409.hg.1	3.356932047	0.582651627085661
LRRC8B	TC0100008978.hg.1	3.351802942	1.31301775117895
ZSCAN2	TC1500008154.hg.1	3.335953857	0.793397960286857
HNF1B	TC1700010504.hg.1	3.321160243	1.31301775117895
NFIL3	TC0900010769.hg.1	3.315083785	2.27376244716355
LOC105372290	TC1900009890.hg.1	3.310819439	4.2920930172056
SCDP1	TC1700007240.hg.1	3.272656082	4.2920930172056
PRKX	TC0X00008945.hg.1	3.262440673	0.793397960286857
---	TC1500007362.hg.1	3.24538957	1.99562636799982
CTD-2561J22.5	TC1900010144.hg.1	3.220854896	1.99562636799982
---	TC0700010670.hg.1	3.206065722	4.2920930172056
FZD3	TC0800007137.hg.1	3.184249393	0.793397960286857
DENND3	TC0800009094.hg.1	3.182516513	1.31301775117895
sheycher	TC1300009057.hg.1	3.171529292	2.27376244716355
RP11-2E11.9	TC0700009150.hg.1	3.1698297	4.2920930172056
ST3GAL5	TC0200013298.hg.1	3.152950091	1.99562636799982
CTD-2022H16.3	TSUnmapped00000551.hg.1	3.104655086	4.2920930172056
EEF1A2	TC2000009813.hg.1	3.063079192	0.793397960286857
NCS1	TC0900008949.hg.1	3.027499385	1.99562636799982
	HTA2-neg-47422683_st	2.912431934	4.2920930172056
ZNF483	TC0900008425.hg.1	2.912137213	3.12134800224461
CSRP2P	TC0300012124.hg.1	2.895579284	0.582651627085661
CCDC112	TC0500011748.hg.1	2.89262038	4.2920930172056
GARNL3	TC0900012173.hg.1	2.882514769	0.793397960286857
CTC-30107.4	TC1900011999.hg.1	2.87879555	0.793397960286857
ADARB1	TC2100007402.hg.1	2.858265634	1.99562636799982
EVL	TC1400008193.hg.1	2.85417079	1.31301775117895
CSRP2	TC1200011327.hg.1	2.812409488	0.582651627085661
SCD5	TC0400011180.hg.1	2.804597361	4.2920930172056
ATL1	TC1400007120.hg.1	2.790828877	3.12134800224461
PLEKHO1	TC0100018288.hg.1	2.789875998	4.2920930172056
RP11-397A15.4	TC0100012283.hg.1	2.771504468	1.31301775117895
LIFR	TC0500010540.hg.1	2.769964205	2.27376244716355

OTUD3	TC0100007184.hg.1	2.765500622	1.31301775117895
PTX3	TC0300009301.hg.1	2.765301272	0.793397960286857
RHOBTB3	TC0500008125.hg.1	2.751378587	3.12134800224461
C6orf132	TC0600011817.hg.1	2.739172899	4.2920930172056
ACAA2	TC1800009289.hg.1	2.731550319	2.27376244716355
TCF7L1	TC0200008236.hg.1	2.717667582	3.12134800224461
SOCS2-AS1	TC1200011541.hg.1	2.693188109	1.31301775117895
FAM171A1	TC1000009884.hg.1	2.673543839	0.793397960286857
F2R	TC0500007831.hg.1	2.623303994	1.31301775117895
MEX3A	TC0100015985.hg.1	2.61368993	2.27376244716355
ZNF730	TC1900011697.hg.1	2.5935269	4.2920930172056
CHN1	TC0200015002.hg.1	2.548208511	1.99562636799982
SOCS2	TC1200008474.hg.1	2.546972413	2.27376244716355
GAB2	TC1100011744.hg.1	2.52447665	4.2920930172056
NLE1	TC1700010413.hg.1	2.520418551	1.99562636799982
TMSB15A	TC0X00010387.hg.1	2.490038991	2.27376244716355
ZNF195	TC1100009840.hg.1	2.474722341	1.31301775117895
---	TC0800010322.hg.1	2.434274733	2.27376244716355
CCNJ	TC1000008529.hg.1	2.433229387	3.12134800224461
RGS7	TC0100017935.hg.1	2.392920278	4.2920930172056
hutoya	TC0700009326.hg.1	2.386225414	4.2920930172056
BID	TC2200007906.hg.1	2.371686521	4.2920930172056
PRR3	TC0600007534.hg.1	2.365397534	4.2920930172056
	HTA2-neg-47419832_st	2.357989564	4.2920930172056
H2BFXP	TC0X00008023.hg.1	2.350898089	4.2920930172056
FAM60BP	TC1800008335.hg.1	2.346307336	3.12134800224461
DCLK2	TC0400008972.hg.1	2.335826849	1.31301775117895
RP11-4C20.4	TC1000009297.hg.1	2.326435195	3.12134800224461
SORD	TC1500007107.hg.1	2.323140915	4.2920930172056
SORD2P	TC1500009271.hg.1	2.210434523	4.2920930172056
CLCF1	TC1100013192.hg.1	2.187651606	3.12134800224461
CCDC84	TC1100009233.hg.1	2.183482043	4.2920930172056
---	TC1900007623.hg.1	2.165950591	4.2920930172056
PLIN2	TC0900012212.hg.1	2.161399866	2.27376244716355
LBR	TC0100017488.hg.1	2.159698617	4.2920930172056
CBX1P2	TC0X00009166.hg.1	2.108979395	4.2920930172056
DAGLB	TC0700013509.hg.1	2.059530274	3.12134800224461
---	TC0200012039.hg.1	2.048669602	4.2920930172056
TET1	TC1000007861.hg.1	2.007386845	4.2920930172056
TXNRD1	TC1200008675.hg.1	1.993674658	3.12134800224461

Significant - negative			
Gene ID	Probe ID	Fold change	q-value (%)
C3	TC1900009443.hg.1	-154.7735357	0
SLC14A1	TC1800007198.hg.1	-86.26066901	0
---	TC1900006814.hg.1	-54.79931674	0
SLPI	TC2000009216.hg.1	-45.08702248	0
STC1	TC0800009891.hg.1	-38.39723889	0
ITGA11	TC1500009861.hg.1	-35.12455396	0
CTSS	TC0100015752.hg.1	-33.90806768	0
IL6	TC0700006890.hg.1	-32.88452668	0.927604580434883
BHLHE41	TC1200010182.hg.1	-32.65297796	0
SIRPB1	TC2000009970.hg.1	-31.66886666	0
TNFRSF11B	TC0800011611.hg.1	-28.99905535	0.927604580434883
IFI44L	TC0100008815.hg.1	-28.47860683	0
SLC16A6	TC1700011558.hg.1	-26.92650976	0
CXCL5	TC0400011014.hg.1	-26.67205353	0
WNT5A	TC0300011247.hg.1	-25.21837948	0
stawswu	TC0900008530.hg.1	-24.85262495	0
TNC	TC0900011305.hg.1	-24.13134349	0.651917904431509
CD82	TC1100007394.hg.1	-23.59947729	0
CSF3	TC1700007775.hg.1	-22.83249059	0
PRLR	TC0500010480.hg.1	-22.05171058	0
SEMA5A	TC0500010043.hg.1	-21.15614212	1.99562636799982
MX1	TC2100007208.hg.1	-21.0774583	0
MMP1	TC1100012131.hg.1	-18.91144023	0
ADAMTS9	TC0300011391.hg.1	-17.27061238	0
TSPAN18	TC1100007400.hg.1	-16.16090405	0.651917904431509
WFDC2	TC2000007492.hg.1	-16.04767068	0
SGPP2	TC0200010897.hg.1	-14.86493243	2.27376244716355
LPXN	TC1100010946.hg.1	-14.30773106	0
DNER	TC0200015958.hg.1	-14.22025075	0
SLITRK6	TC1300009394.hg.1	-13.62973241	0
GLT8D2	TC1200011752.hg.1	-13.02776774	0
SAMD9L	TC0700011797.hg.1	-12.88632219	0
ADGRF1	TC0600011957.hg.1	-11.98938429	0
C1S	TC1200012592.hg.1	-11.72289782	3.12134800224461
EDNRA	TC0400008943.hg.1	-11.22627189	0.927604580434883
IL1B	TC0200013916.hg.1	-11.03560129	0
NTRK2	TC0900007752.hg.1	-11.02260259	0.927604580434883
IL1A	TC0200013913.hg.1	-11.01939414	0.651917904431509
NOV	TC0800008667.hg.1	-10.97107254	0.927604580434883

PARM1	TC0400007868.hg.1	-10.60940615	0
VDR	TC1200010559.hg.1	-10.46185422	0.927604580434883
TLR3	TC0400009543.hg.1	-10.41799444	0
SIRPD	TC2000009969.hg.1	-10.36716363	0
---	TC1000009600.hg.1	-10.31897189	0.651917904431509
BDKRB2	TC1400010647.hg.1	-10.31752718	4.2920930172056
PTPRU	TC0100007584.hg.1	-10.12716179	0
IFI6	TC0100013445.hg.1	-10.06866148	0
MCTP1	TC0500011483.hg.1	-9.85067555	0
MLPH	TC0200011251.hg.1	-9.51435375	0
SLC37A2	TC1100009408.hg.1	-9.340574801	0
SNORD123	TC0500006712.hg.1	-8.965688236	0.651917904431509
DUSP10	TC0100017420.hg.1	-8.818196751	0
GMFG	TC1900010651.hg.1	-8.799155088	0
PSMB9	TC0600014110.hg.1	-8.75505151	0
FEZ1	TC1100012708.hg.1	-8.743379382	0
RAB27B	TC1800007360.hg.1	-8.690087278	0
reniru	TC2000008164.hg.1	-8.346515341	0
CARD16	TC1100013222.hg.1	-8.134479301	0
HLA-B	TC0600014258.hg.1	-7.954518843	0
---	TC0X00011018.hg.1	-7.903397664	1.99562636799982
THBS2	TC0600013998.hg.1	-7.779556975	0
C1QTNF1	TC1700009079.hg.1	-7.728622677	2.27376244716355
CASP1	TC1100013221.hg.1	-7.544648388	0
ASS1	TC0900008953.hg.1	-7.371621516	4.2920930172056
CAMK2N1	TC0100013182.hg.1	-7.234500113	0
ADGRG1	TC1600008005.hg.1	-7.130006211	2.27376244716355
SSX1	TC0X00007176.hg.1	-7.074420624	0
EVI2A	TC1700010314.hg.1	-6.960281555	0.927604580434883
AOX1	TC0200010421.hg.1	-6.792429407	0
TLR6	TC0400012922.hg.1	-6.787321413	0.927604580434883
CR1L	TC0100011417.hg.1	-6.779162249	0.651917904431509
XAF1	TC1700006709.hg.1	-6.728615428	0
IL13RA2	TC0X00010557.hg.1	-6.721115362	0
KCNK3	TC0200007042.hg.1	-6.693236539	0.651917904431509
BCL2A1	TC1500010184.hg.1	-6.55176828	0
TNFRSF9	TC0100012734.hg.1	-6.355575055	1.99562636799982
SLIT2	TC0400007016.hg.1	-6.251138642	0.651917904431509
AC003092.1	TC0700008354.hg.1	-6.249277191	0
CFH	TC0100011064.hg.1	-6.202765856	1.31301775117895
MAL2	TC0800008663.hg.1	-6.157664794	2.27376244716355

PRDM1	TC0600008972.hg.1	-6.138703546	3.12134800224461
OAS2	TC1200008921.hg.1	-6.117562773	0.651917904431509
BACE2	TC2100007198.hg.1	-6.06058196	0.651917904431509
PCDH1	TC0500012294.hg.1	-6.054434998	0
STEAP1	TC0700008292.hg.1	-6.031375262	0
CNIH3	TC0100018349.hg.1	-6.025237041	0.927604580434883
---	TC0300011389.hg.1	-6.022566144	0
RP11-114H23.1	TC1200011303.hg.1	-5.928221419	0
KCND2	TC0700008918.hg.1	-5.918228229	1.31301775117895
DPP4	TC0200014764.hg.1	-5.917287532	0
---	TC2000009329.hg.1	-5.900531854	0
PTGS2	TC0100016715.hg.1	-5.868355754	0
GPAT3	TC0400008007.hg.1	-5.856959831	0.651917904431509
FAM20C	TC0700006445.hg.1	-5.839156587	0.651917904431509
AGTRAP	TC0100006865.hg.1	-5.767343695	0
FZD8	TC1000010327.hg.1	-5.752026544	0.927604580434883
RP11-114H23.3	TC1200011304.hg.1	-5.735546671	0
PTPRM	TC1800006589.hg.1	-5.721592167	0
ZC3H12A	TC0100007832.hg.1	-5.684297251	0.927604580434883
NRP2	TC0200010545.hg.1	-5.574613049	0
CLMP	TC1100012615.hg.1	-5.549412324	0
SLC16A2	TC0X00007655.hg.1	-5.520350997	0
PRSS12	TC0400011685.hg.1	-5.505739431	0
CD68	TC1700012191.hg.1	-5.502073199	0.927604580434883
RIMS2	TC0800008487.hg.1	-5.471987748	0.927604580434883
RP11-283G6.3	TC1200010183.hg.1	-5.427134513	0
APOBEC3G	TC2200009274.hg.1	-5.356253839	0.927604580434883
EPSTI1	TC1300008760.hg.1	-5.351482707	0.927604580434883
NTNG1	TC0100009307.hg.1	-5.340743756	2.27376244716355
LAMB3	TC0100017167.hg.1	-5.333613683	0
LACC1	TC1300009956.hg.1	-5.303965287	0
IFI27	TC1400008056.hg.1	-5.295352288	0.651917904431509
LOC105376382	TC1000009674.hg.1	-5.287072097	0.651917904431509
CMPK2	TC0200011624.hg.1	-5.266813352	0
RUNX2	TC0600008146.hg.1	-5.24983956	0.651917904431509
LAMA3	TC1800006897.hg.1	-5.224943126	0
NR1D1	TC1700010604.hg.1	-5.214070175	1.99562636799982
IFI44	TC0100008816.hg.1	-5.205048717	0.927604580434883
IFIH1	TC0200014772.hg.1	-5.187923958	2.27376244716355
MTSS1	TC0800011713.hg.1	-5.16911154	0
NR2F1-AS1	TC0500011464.hg.1	-5.060617146	0

SEL1L3	TC0400010282.hg.1	-5.025555244	1.31301775117895
CYP4F11	TC1900009896.hg.1	-5.003227312	0
OAS1	TC1200012708.hg.1	-4.988374112	0.927604580434883
CXCL1	TC0400007840.hg.1	-4.979957166	4.2920930172056
---	TC0900008601.hg.1	-4.96236894	2.27376244716355
KYNU	TC0200009537.hg.1	-4.937859088	0.927604580434883
EPHA4	TC0200015815.hg.1	-4.873789696	1.99562636799982
IRAK3	TC1200008057.hg.1	-4.864445407	1.99562636799982
PMEPA1	TC2000009604.hg.1	-4.763691545	4.2920930172056
LINC00704	TC1000009642.hg.1	-4.728458714	0.651917904431509
CXCL6	TC0400012814.hg.1	-4.689614498	3.12134800224461
PSMB8-AS1	TC0600014109.hg.1	-4.671800495	0
CDR1	TC0X00008596.hg.1	-4.65676044	2.27376244716355
---	TC2000009931.hg.1	-4.557135707	0
IRAK2	TC0300006580.hg.1	-4.544743901	0
OSBPL6	TC0200016571.hg.1	-4.542692549	0
APOL3	TC2200008588.hg.1	-4.530028102	0.651917904431509
TFPI2	TC0700011809.hg.1	-4.514720473	1.31301775117895
CYB5R2	TC1100010003.hg.1	-4.503989092	0.651917904431509
PROX1	TC0100011566.hg.1	-4.491378582	0
CSTA	TC0300008550.hg.1	-4.451465373	0.927604580434883
---	TC1900011214.hg.1	-4.450466804	0
AIM1	TC0600008981.hg.1	-4.426204168	1.31301775117895
TPK1	TC0700012917.hg.1	-4.415715835	0
PPP4R4	TC1400008058.hg.1	-4.385510122	0.651917904431509
MVP	TC1600011378.hg.1	-4.369404489	0.651917904431509
STEAP2	TC0700008293.hg.1	-4.360839823	1.31301775117895
RP11-752L20.3	TC0400008944.hg.1	-4.351993293	3.12134800224461
UBE2L6	TC1100010897.hg.1	-4.338059978	0.927604580434883
SNORA70	TC1200011305.hg.1	-4.298510012	0.651917904431509
PPP1R14C	TC0600009831.hg.1	-4.254693874	0.927604580434883
XDH	TC0200012163.hg.1	-4.21040788	0.651917904431509
SH3PXD2A	TC1000011726.hg.1	-4.208104894	0.927604580434883
IFIT3	TC1000008397.hg.1	-4.196369356	2.27376244716355
IRF9	TC1400010584.hg.1	-4.189957664	0.651917904431509
UBA7	TC0300011081.hg.1	-4.184205378	0
HIVEP2	TC0600013409.hg.1	-4.165846459	0.651917904431509
LPCAT2	TC1600007931.hg.1	-4.152454423	0.651917904431509
HLA-J	TC0600007502.hg.1	-4.148730663	1.31301775117895
IL31RA	TC0500007432.hg.1	-4.135283771	2.27376244716355
CADPS2	TC0700012444.hg.1	-4.102303793	2.27376244716355

BTN3A2	TC0600007301.hg.1	-4.081927806	3.12134800224461
ATP2B4	TC0100011267.hg.1	-4.072857485	4.2920930172056
SPTLC3	TC2000006736.hg.1	-4.022289718	0.651917904431509
STEAP1B	TC0700010443.hg.1	-4.007269857	0.927604580434883
CXCL3	TC0400011015.hg.1	-3.984942756	3.12134800224461
RP11-100E13.1	TC0100017474.hg.1	-3.974464063	2.27376244716355
ADTRP	TC0600010825.hg.1	-3.963853565	1.31301775117895
RORA	TC1500009641.hg.1	-3.918505893	0.651917904431509
KIAA0040	TC0100016476.hg.1	-3.918237008	1.99562636799982
DDX60	TC0400012366.hg.1	-3.914087478	4.2920930172056
KIAA1217	TC1000007024.hg.1	-3.905516439	0.927604580434883
HLA-C	TC0600014257.hg.1	-3.859599097	0
PREX1	TC2000009357.hg.1	-3.858793924	0.927604580434883
AIM2	TC0100016086.hg.1	-3.858193944	1.99562636799982
SQRDL	TC1500010737.hg.1	-3.842150416	0.651917904431509
sugyby	TC1100006732.hg.1	-3.818960505	0.651917904431509
RFX8	TC0200013669.hg.1	-3.817518989	0.651917904431509
CLEC2B	TC1200009881.hg.1	-3.816120339	0.651917904431509
IL4R	TC1600007312.hg.1	-3.810310764	0.651917904431509
POPDC3	TC0600012709.hg.1	-3.799992752	0
C10orf11	TC1000008099.hg.1	-3.798441669	0.927604580434883
INHBA	TC0700010854.hg.1	-3.795000301	0
CTD-2033D15.1	TC1500009071.hg.1	-3.791537521	4.2920930172056
SOD2	TC0600013757.hg.1	-3.791231799	0.651917904431509
FAM198B	TC0400012245.hg.1	-3.773827118	0.651917904431509
SETBP1	TC1800007186.hg.1	-3.752495478	2.27376244716355
PRRG4	TC1100007216.hg.1	-3.726682728	0.651917904431509
TMEM246	TC0900011035.hg.1	-3.721987818	0
MYO1D	TC1700010358.hg.1	-3.710751353	0
HLA-F	TC0600007480.hg.1	-3.701789005	0
MMP14	TC1400006659.hg.1	-3.700602046	3.12134800224461
ATP2B1	TC1200011474.hg.1	-3.699524877	3.12134800224461
LINC00973	TC0300008123.hg.1	-3.695842644	0
RGCC	TC1300006979.hg.1	-3.695225311	0.651917904431509
GBP2	TC0100018451.hg.1	-3.663731217	1.31301775117895
TK2	TC1600011551.hg.1	-3.663122633	1.99562636799982
TRANK1	TC0300010714.hg.1	-3.658364099	4.2920930172056
CCDC122	TC1300008772.hg.1	-3.653592331	3.12134800224461
CLGN	TC0400011973.hg.1	-3.645707963	0
APOBEC3D	TC2200009272.hg.1	-3.637606112	2.27376244716355
starawbo	TC0100013053.hg.1	-3.637540556	4.2920930172056

TBX3	TC1200012016.hg.1	-3.633055319	0.927604580434883
GBP1	TC0100014852.hg.1	-3.623265855	4.2920930172056
ITGB3	TC1700012274.hg.1	-3.6188024	4.2920930172056
GALNT5	TC0200009739.hg.1	-3.614038813	2.27376244716355
RIPK4	TC2100008222.hg.1	-3.601479436	4.2920930172056
TMOD1	TC0900008150.hg.1	-3.589540893	4.2920930172056
PSMB8	TC0600011507.hg.1	-3.564188568	0.927604580434883
GOS2	TC0100011453.hg.1	-3.556266234	0.927604580434883
ACSL5	TC1000008926.hg.1	-3.550420739	1.99562636799982
MCOLN3	TC0100014769.hg.1	-3.534188525	0.651917904431509
LAMA4	TC0600012885.hg.1	-3.526720719	0
NPAS2	TC0200008627.hg.1	-3.508943375	0
SIRPA	TC2000006501.hg.1	-3.48892681	4.2920930172056
MME	TC0300009258.hg.1	-3.484983116	2.27376244716355
TMEM229B	TC1400010763.hg.1	-3.481133158	0
USP41	TC2200008036.hg.1	-3.471168341	0.927604580434883
NLRP3	TC0100012315.hg.1	-3.457241378	2.27376244716355
	HTA2-neg-47422252_st	-3.450860928	2.27376244716355
IFI16	TC0100010244.hg.1	-3.4363413	0
ABTB2	TC1100010505.hg.1	-3.421969734	3.12134800224461
CD83	TC0600007012.hg.1	-3.418916054	3.12134800224461
GBP1P1	TC0100008977.hg.1	-3.406549885	4.2920930172056
CTSO	TC0400012213.hg.1	-3.405930509	0.651917904431509
SDC4	TC2000009218.hg.1	-3.387763899	2.27376244716355
ABLIM3	TC0500009055.hg.1	-3.384028378	0.927604580434883
---	TC0200008928.hg.1	-3.367409873	0.651917904431509
HOMER2	TC1500010251.hg.1	-3.354660261	0.927604580434883
RNU6-917P	TC2000008163.hg.1	-3.352858658	4.2920930172056
ABCA6	TC1700011578.hg.1	-3.347939986	0.927604580434883
PAG1	TC0800010926.hg.1	-3.330535901	0
ALDH1A3	TC1500010800.hg.1	-3.316634424	0.927604580434883
RP11-114H23.2	TC1200011306.hg.1	-3.302033294	0.651917904431509
QPCT	TC0200007261.hg.1	-3.249742332	0.927604580434883
---	TC0400007268.hg.1	-3.239082019	0.927604580434883
GPRC5C	TC1700008851.hg.1	-3.238270869	3.12134800224461
IL1R1	TC0200008666.hg.1	-3.229644417	1.31301775117895
CXCL10	TC0400011053.hg.1	-3.225930447	2.27376244716355
CD69	TC1200009876.hg.1	-3.224545887	0
ERAP1	TC0500013342.hg.1	-3.21486168	1.31301775117895
RP11-7F17.7	TC1400007740.hg.1	-3.202761421	0.651917904431509
TPP1	TC1100009981.hg.1	-3.197571605	0.927604580434883

CCL20	TC0200010980.hg.1	-3.188503946	1.31301775117895
ANKH	TC0500010169.hg.1	-3.184100781	4.2920930172056
HES1	TC0300009916.hg.1	-3.181465183	4.2920930172056
SOGA3	TC0600013119.hg.1	-3.173129351	1.31301775117895
DDX60L	TC0400012990.hg.1	-3.169295836	2.27376244716355
TRIML2	TC0400012696.hg.1	-3.138032585	4.2920930172056
CD109	TC0600008539.hg.1	-3.1373359	1.99562636799982
ETV1	TC0700010321.hg.1	-3.134032194	2.27376244716355
TAPBPL	TC1200012584.hg.1	-3.128092121	0.927604580434883
PLA2G4A	TC0100010939.hg.1	-3.119980474	2.27376244716355
CXCL2	TC0400011018.hg.1	-3.108714943	1.31301775117895
RP5-875H18.9	TC1700008231.hg.1	-3.100149237	1.99562636799982
TNIP1	TC0500012497.hg.1	-3.096500474	4.2920930172056
---	TC0600009216.hg.1	-3.078614728	3.12134800224461
RRAS	TC1900011153.hg.1	-3.075089357	0.927604580434883
PHF11	TC1300007167.hg.1	-3.071457314	0.927604580434883
TGFBR2	TC0300006925.hg.1	-3.063880438	0
FAM174B	TC1500010929.hg.1	-3.06256543	1.99562636799982
GNG11	TC0700008351.hg.1	-3.062460706	3.12134800224461
RP11-5G9.5	TC1300008774.hg.1	-3.030897367	1.99562636799982
CEACAM1	TC1900010807.hg.1	-3.01449569	2.27376244716355
SORBS1	TC1000011487.hg.1	-3.01288582	3.12134800224461
FAS	TC1000008388.hg.1	-3.006086799	0.927604580434883
CFAP206	TC0600014153.hg.1	-3.005602039	0.651917904431509
APOL1	TC2200007242.hg.1	-3.004791735	0.651917904431509
PHACTR1	TC0600006976.hg.1	-2.997393165	0.927604580434883
---	TC2000007868.hg.1	-2.996723549	3.12134800224461
P2RY2	TC1100008378.hg.1	-2.982607217	0.927604580434883
ATP10D	TC0400007422.hg.1	-2.968457244	4.2920930172056
ARHGAP24	TC0400008030.hg.1	-2.966963133	1.31301775117895
SNAI2	TC0800010382.hg.1	-2.961674997	3.12134800224461
EPHB1	TC0300013877.hg.1	-2.961139929	1.99562636799982
C5orf56andRAD50	TC0500008636.hg.1	-2.961032516	2.27376244716355
MAP3K5	TC0600013280.hg.1	-2.956496017	4.2920930172056
RBM47	TC0400010500.hg.1	-2.949874001	0.927604580434883
ELF1	TC1300008708.hg.1	-2.947221178	2.27376244716355
ADIRF	TC1000012471.hg.1	-2.945351194	1.99562636799982
SATB1	TC0300013949.hg.1	-2.922362204	3.12134800224461
MAN1A1	TC0600013010.hg.1	-2.903634776	0
PRKG2	TC0400011159.hg.1	-2.901666404	0.927604580434883
C1orf21	TC0100010887.hg.1	-2.89193742	1.31301775117895

ACKR4	TC0300008847.hg.1	-2.867665334	3.12134800224461
kuchoybu	TC0700010064.hg.1	-2.855411492	1.99562636799982
blargor	TC0500011872.hg.1	-2.849578757	1.31301775117895
PTPRJ	TC1100007507.hg.1	-2.840201593	0.651917904431509
TMX4	TC2000008345.hg.1	-2.832723916	0
POLD4	TC1100013191.hg.1	-2.787884257	4.2920930172056
TMEM51	TC0100006977.hg.1	-2.785590137	0.927604580434883
ICA1	TC0700010257.hg.1	-2.775848826	0.927604580434883
HTR7	TC1000011398.hg.1	-2.75939757	0.927604580434883
CHPF	TC0200015790.hg.1	-2.754295468	3.12134800224461
DSE	TC0600014177.hg.1	-2.734369734	1.99562636799982
RP11-20B7.1	TC0300007852.hg.1	-2.714266415	1.31301775117895
TMEM255B	TC1300010007.hg.1	-2.689522391	2.27376244716355
FLT3LG	TC1900011779.hg.1	-2.669586569	0.927604580434883
SNTB1	TC0800011634.hg.1	-2.665358635	3.12134800224461
PER3	TC0100006725.hg.1	-2.662732189	4.2920930172056
TFAP2C	TC2000007830.hg.1	-2.657126046	1.99562636799982
NRP1	TC1000010273.hg.1	-2.627984318	1.31301775117895
SERPINA1	TC1400010045.hg.1	-2.627723238	3.12134800224461
LAPTM5	TC0100013534.hg.1	-2.627365054	1.31301775117895
---	TC0400009594.hg.1	-2.615018827	2.27376244716355
glornoby	TC1000011013.hg.1	-2.6134822	1.99562636799982
---	TC0900008537.hg.1	-2.599042094	1.99562636799982
LRP10	TC1400006663.hg.1	-2.589170551	0.927604580434883
TSPAN13	TC0700006783.hg.1	-2.588398955	1.99562636799982
FAM167A	TC0800009600.hg.1	-2.585323233	1.31301775117895
fyslabu	TC0800010706.hg.1	-2.574738653	3.12134800224461
SCN1B	TC1900007830.hg.1	-2.559805745	3.12134800224461
C4orf33	TC0400008686.hg.1	-2.549302664	3.12134800224461
USP18	TC2200006540.hg.1	-2.535726828	1.99562636799982
ATL3	TC1100011128.hg.1	-2.534702921	1.99562636799982
EPAS1	TC0200007458.hg.1	-2.531261692	0.927604580434883
---	TC1000006540.hg.1	-2.530165344	3.12134800224461
ITGA2	TC0500007368.hg.1	-2.526289545	0.927604580434883
ZC3H12C	TC1100008999.hg.1	-2.525945188	1.99562636799982
HMG5	TC0X00010172.hg.1	-2.521055712	2.27376244716355
F8	TC0X00011226.hg.1	-2.520300338	1.99562636799982
RHOJ	TC1400007404.hg.1	-2.515259644	3.12134800224461
KB-1027C11.4	TC2200008108.hg.1	-2.512879805	2.27376244716355
TAPBP	TC0600011536.hg.1	-2.498097871	4.2920930172056
TSC22D1	TC1300008793.hg.1	-2.495207856	4.2920930172056

CD58	TC0100015397.hg.1	-2.492925899	1.31301775117895
FAM225A	TC0900008481.hg.1	-2.490885432	4.2920930172056
MPZL2	TC1100012474.hg.1	-2.479815866	4.2920930172056
CTBS	TC0100014755.hg.1	-2.471276324	2.27376244716355
PPP3CB-AS1	TC1000008032.hg.1	-2.468395666	4.2920930172056
POF1B	TC0X00010207.hg.1	-2.463035918	0.927604580434883
PARP3	TC0300007454.hg.1	-2.451999469	1.31301775117895
AGAP2	TC1200010976.hg.1	-2.449878158	0.651917904431509
EMP1	TC1200006909.hg.1	-2.435936738	3.12134800224461
zarvo	TC1400008679.hg.1	-2.428384158	3.12134800224461
DTX3L	TC0300008558.hg.1	-2.426908977	3.12134800224461
FOXF1	TC1600008735.hg.1	-2.426244597	4.2920930172056
NFKBIA	TC1400008940.hg.1	-2.4257093	4.2920930172056
TESPA1	TC1200010850.hg.1	-2.421906775	2.27376244716355
EIF5A2	TC0300013104.hg.1	-2.400586076	0.927604580434883
PPIC	TC0500011875.hg.1	-2.392805834	1.31301775117895
RTP4	TC0300009799.hg.1	-2.392227065	3.12134800224461
ZBTB38	TC0300008999.hg.1	-2.390302709	0.651917904431509
SLC20A1	TC0200008930.hg.1	-2.381719202	0.927604580434883
MST1R	TC0300011088.hg.1	-2.379082003	1.99562636799982
---	TC0Y00006647.hg.1	-2.369492345	3.12134800224461
TTC39B	TC0900012209.hg.1	-2.36640335	3.12134800224461
TAP1	TC0600011508.hg.1	-2.357591885	4.2920930172056
SFR1	TC1000008798.hg.1	-2.334629043	3.12134800224461
RP11-53M11.3	TC0800007664.hg.1	-2.331234823	4.2920930172056
MAP9	TC0400012193.hg.1	-2.327607823	4.2920930172056
C11orf63	TC1100009335.hg.1	-2.32163472	2.27376244716355
TRPV4	TC1200011882.hg.1	-2.315504135	2.27376244716355
ARSD	TC0X00011338.hg.1	-2.309378	3.12134800224461
CYBA	TC1600011220.hg.1	-2.307440319	2.27376244716355
MAN2B2	TC0400006689.hg.1	-2.296340638	3.12134800224461
---	TC0900012208.hg.1	-2.292420972	1.31301775117895
COPZ2	TC1700010973.hg.1	-2.292029056	1.99562636799982
SLFN5	TC1700007585.hg.1	-2.263564892	3.12134800224461
PKD2	TC0400008093.hg.1	-2.232969171	2.27376244716355
CPQ	TC0800008300.hg.1	-2.232919127	2.27376244716355
ATP8B1	TC1800009233.hg.1	-2.217154541	3.12134800224461
SP100	TC0200011023.hg.1	-2.200092224	1.99562636799982
TSPAN4	TC1100006495.hg.1	-2.198358488	2.27376244716355
VPS9D1	TC1600011290.hg.1	-2.165057989	3.12134800224461
---	TC0800006742.hg.1	-2.161059309	4.2920930172056

OAS3	TC1200008920.hg.1	-2.159924175	3.12134800224461
LY6E	TC0800012371.hg.1	-2.158715817	2.27376244716355
STAT2	TC1200010908.hg.1	-2.152268398	4.2920930172056
---	TC0700010706.hg.1	-2.131398962	2.27376244716355
HLA-L	TC0600007518.hg.1	-2.130462513	1.99562636799982
FOXO1	TC1300008688.hg.1	-2.111912408	2.27376244716355
PDE4DIP	TC0100009837.hg.1	-2.1064534	3.12134800224461
KCNAB2	TC0100006675.hg.1	-2.097048168	3.12134800224461
LACTB2	TC0800010766.hg.1	-2.09477748	3.12134800224461
runiyo	TC0200008931.hg.1	-2.077297721	4.2920930172056
FBXO8	TC0400012452.hg.1	-2.063315348	1.99562636799982
OTUB2	TC1400008054.hg.1	-2.050206177	4.2920930172056
---	TC0800010259.hg.1	-2.045955358	0.927604580434883
nirime	TC0600008620.hg.1	-2.044838163	4.2920930172056
MDFIC	TC0700008857.hg.1	-2.032077371	2.27376244716355
---	TC1100006741.hg.1	-2.028560504	4.2920930172056
SLC37A1	TC2100008527.hg.1	-2.017080973	4.2920930172056
ANG	TC1400006529.hg.1	-2.015265614	2.27376244716355
ZHX3	TC2000009128.hg.1	-2.013859916	2.27376244716355
RP11-802E16.3	TC1100013058.hg.1	-2.013293725	2.27376244716355
---	TC0400012658.hg.1	-2.006509982	3.12134800224461
smufla	TC0600014184.hg.1	-2.003670575	3.12134800224461
spoyber	TC0100015059.hg.1	-1.983118655	2.27376244716355
SEMA3D	TC0700011675.hg.1	-1.976111931	4.2920930172056
MAGEC2	TC0X00011001.hg.1	-1.935215192	1.99562636799982
WSCD1	TC1700012177.hg.1	-1.934961686	4.2920930172056
TMEM219	TC1600011380.hg.1	-1.912495916	2.27376244716355
PDGFC	TC0400012222.hg.1	-1.840136345	3.12134800224461
CTSB	TC0800009619.hg.1	-1.832821982	4.2920930172056
RNU7-13P	TC0100016679.hg.1	-1.829343924	3.12134800224461
FAM129B	TC0900011582.hg.1	-1.817115344	4.2920930172056
B2M	TC1500007097.hg.1	-1.751328842	4.2920930172056
C1orf101	TC0100012221.hg.1	-1.735872517	3.12134800224461
CHPT1	TC1200012698.hg.1	-1.704478025	3.12134800224461

Table SIII. A total of 173 high-confidence genes regulated in opposite directions by SOX4 knockdown and SOX4 re-expression.

Gene name	Probe ID	Fold change SOX4-KD vs SCR	q-value (%)	Fold change SOX4-Rescue vs SOX4-KD
LYPD1	TC0200014361.hg.1	-23.0266266	0	11.09380218
ZFHX4-AS1	TC0800012431.hg.1	-17.23853179	0	20.8106819
PKP2	TC1200010341.hg.1	-15.58371723	0	8.372696519
FOXA1	TC1400008981.hg.1	-14.35617325	0	4.338394761
SCDP1	TC1700007240.hg.1	-11.33267211	0	3.272656082
LOC101928161	TC0200009393.hg.1	-10.1967854	0.333076753	3.510756654
HTR1D	TC0100013272.hg.1	-9.691857324	0	3.431253383
RBPMS2	TC1500009756.hg.1	-8.579926764	0	3.849607433
RGS4	TC0100010393.hg.1	-8.264178028	1.607801004	19.70895893
DUSP1	TC0500012842.hg.1	-6.341829832	0.333076753	4.327658523
CYFIP2	TC0500009211.hg.1	-5.227514227	0	4.788383383
SCD5	TC0400011180.hg.1	-4.753833913	0	2.804597361
MEST	TC0700009145.hg.1	-4.588190629	0.333076753	12.83282595
ADGRG6	TC0600009669.hg.1	-4.249182084	0.333076753	3.775569654
RASSF2	TC2000008267.hg.1	-4.057536295	0	10.03625644
SMAD6	TC1500007619.hg.1	-4.014352346	0	3.706947458
TLE4	TC0900007680.hg.1	-3.588439672	0	10.18814858
RNF122	TC0800010081.hg.1	-3.375607506	0.333076753	5.154682852
SCARB1	TC1200012327.hg.1	-3.367382642	0	4.09312956
RP11-80B9.1	TC0100012158.hg.1	-3.179099674	0.333076753	6.175143516
NETO1	TC1800009011.hg.1	-3.150802517	3.845686185	6.110978195
EVL	TC1400008193.hg.1	-2.867143607	0.407942629	2.85417079
GP1BB	TC2200006614.hg.1	-2.824292806	1.037101959	4.86570549
CYP2S1	TC1900008141.hg.1	-2.820970019	1.037101959	8.586429464
kleylaw	TC0900007683.hg.1	-2.583232804	1.037101959	7.334657843
PTGER4	TC0500007231.hg.1	-2.566190016	1.607801004	3.46415624
ZFHX4	TC0800008011.hg.1	-2.50232527	0.664908359	4.166533751
GAB2	TC1100011744.hg.1	-2.493958283	0.333076753	2.52447665
GARNL3	TC0900012173.hg.1	-2.492062066	0.333076753	2.882514769
TCF7L1	TC0200008236.hg.1	-2.392933686	3.845686185	2.717667582
EPHB4	TC0700012016.hg.1	-2.378166679	1.607801004	3.606314791
FNBP1L	TC0100009064.hg.1	-2.295552881	0.664908359	3.409026939
CTD-2022H16.3	TSUnmapped00000551.hg.1	-2.281694938	2.472534784	3.104655086
41698	TC0100011665.hg.1	-2.275536667	3.845686185	3.812203146
PTX3	TC0300009301.hg.1	-2.208610733	1.607801004	2.765301272

ANKRD1	TC1000011400.hg.1	-2.185797751	3.845686185	18.27652646
FAM60BP	TC1800008335.hg.1	-2.18189549	3.845686185	2.346307336
FZD3	TC0800007137.hg.1	-2.169402879	0.407942629	3.184249393
ZSCAN2	TC1500008154.hg.1	-2.133709841	0.407942629	3.335953857
LMO7	TC1300009980.hg.1	-2.06197356	2.472534784	3.780376698
SMO	TC0700009082.hg.1	-2.035855854	2.472534784	5.492855476
PRR3	TC0600007534.hg.1	-1.945878772	2.472534784	2.365397534
KIAA1958	TC0900008467.hg.1	-1.934780184	2.472534784	3.771417847
LBR	TC0100017488.hg.1	-1.91663307	1.037101959	2.159698617
\	TC1100008409.hg.1	-1.711243427	2.472534784	3.356932047
EIF5A2	TC0300013104.hg.1	1.737414119	2.472534784	-2.400586076
---	TC0900008537.hg.1	1.937475857	1.607801004	-2.599042094
TSPAN4	TC1100006495.hg.1	1.93859643	1.607801004	-2.198358488
sugyby	TC1100006732.hg.1	1.986699032	1.607801004	-3.818960505
kuchoybu	TC0700010064.hg.1	2.001569207	2.472534784	-2.855411492
DSE	TC0600014177.hg.1	2.010910794	1.037101959	-2.734369734
NRP1	TC1000010273.hg.1	2.081530936	0.664908359	-2.627984318
ACSL5	TC1000008926.hg.1	2.102203743	2.472534784	-3.550420739
ZHX3	TC2000009128.hg.1	2.192891097	1.037101959	-2.013859916
FAM225A	TC0900008481.hg.1	2.205574766	3.845686185	-2.490885432
zarvo	TC1400008679.hg.1	2.21819034	1.037101959	-2.428384158
CD109	TC0600008539.hg.1	2.294521513	3.845686185	-3.1373359
LAPTM5	TC0100013534.hg.1	2.351031985	0.263891671	-2.627365054
RP11-20B7.1	TC0300007852.hg.1	2.375454517	0.664908359	-2.714266415
SNAI2	TC0800010382.hg.1	2.384711928	0.407942629	-2.961674997
RFX8	TC0200013669.hg.1	2.397950287	0.664908359	-3.817518989
IL4R	TC1600007312.hg.1	2.400136156	0.407942629	-3.810310764
PDE4DIP	TC0100009837.hg.1	2.414403273	1.037101959	-2.1064534
SETBP1	TC1800007186.hg.1	2.444351905	0.664908359	-3.752495478
MCOLN3	TC0100014769.hg.1	2.447356466	1.607801004	-3.534188525
HMGNS	TC0X00010172.hg.1	2.458818367	0.664908359	-2.521055712
POF1B	TC0X00010207.hg.1	2.489043453	0	-2.463035918
HOMER2	TC1500010251.hg.1	2.49540532	1.607801004	-3.354660261
P2RY2	TC1100008378.hg.1	2.552079168	1.037101959	-2.982607217
POPDC3	TC0600012709.hg.1	2.603757338	0.263891671	-3.799992752
TMOD1	TC0900008150.hg.1	2.672898863	3.845686185	-3.589540893
SLC37A2	TC1100009408.hg.1	2.691633533	2.472534784	-9.340574801
ADTRP	TC0600010825.hg.1	2.839546263	3.845686185	-3.963853565
CPQ	TC0800008300.hg.1	2.847823036	0	-2.232919127
NRP2	TC0200010545.hg.1	2.885496338	1.607801004	-5.574613049

TESPA1	TC1200010850.hg.1	2.959086254	1.607801004	-2.421906775
KCNK3	TC0200007042.hg.1	2.9604714	2.472534784	-6.693236539
IL31RA	TC0500007432.hg.1	2.980985794	3.845686185	-4.135283771
FAM198B	TC0400012245.hg.1	2.999820479	2.472534784	-3.773827118
EPHA4	TC0200015815.hg.1	3.081912353	2.472534784	-4.873789696
TFAP2C	TC2000007830.hg.1	3.110193126	3.845686185	-2.657126046
SLIT2	TC0400007016.hg.1	3.115184441	0	-6.251138642
RNU6-917P	TC2000008163.hg.1	3.150359566	2.472534784	-3.352858658
SLC16A2	TC0X00007655.hg.1	3.239534263	0	-5.520350997
MLPH	TC0200011251.hg.1	3.251494725	3.845686185	-9.51435375
OSBPL6	TC0200016571.hg.1	3.316747456	0	-4.542692549
TMEM255B	TC1300010007.hg.1	3.329144135	0.263891671	-2.689522391
RP11-752L20.3	TC0400008944.hg.1	3.383256363	0.263891671	-4.351993293
CYP4F11	TC1900009896.hg.1	3.383972279	0.664908359	-5.003227312
TPK1	TC0700012917.hg.1	3.397318945	1.607801004	-4.415715835
MMP14	TC1400006659.hg.1	3.458736242	0	-3.700602046
MYO1D	TC1700010358.hg.1	3.515270803	0.263891671	-3.710751353
PRKG2	TC0400011159.hg.1	3.549754701	0.263891671	-2.901666404
ANKH	TC0500010169.hg.1	3.571234823	0	-3.184100781
LAMB3	TC0100017167.hg.1	3.577594809	0	-5.333613683
EPHB1	TC0300013877.hg.1	3.690665535	0	-2.961139929
RP5-875H18.9	TC1700008231.hg.1	3.755191765	0.407942629	-3.100149237
SH3PXD2A	TC1000011726.hg.1	3.755557057	1.607801004	-4.208104894
PHACTR1	TC0600006976.hg.1	3.774805996	0	-2.997393165
ATP2B4	TC0100011267.hg.1	3.931021261	1.037101959	-4.072857485
BCL2A1	TC1500010184.hg.1	3.934076468	0.263891671	-6.55176828
NTNG1	TC0100009307.hg.1	3.934092375	0	-5.340743756
CLMP	TC1100012615.hg.1	4.015123415	1.037101959	-5.549412324
CADPS2	TC0700012444.hg.1	4.0976618	1.037101959	-4.102303793
ATP2B1	TC1200011474.hg.1	4.245077326	0.263891671	-3.699524877
CR1L	TC0100011417.hg.1	4.26752469	1.037101959	-6.779162249
KCND2	TC0700008918.hg.1	4.274053104	1.607801004	-5.918228229
CD68	TC1700012191.hg.1	4.28349083	0	-5.502073199
PREX1	TC2000009357.hg.1	4.2897146	0	-3.858793924
MME	TC0300009258.hg.1	4.341583758	0.407942629	-3.484983116
MTSS1	TC0800011713.hg.1	4.393003808	0	-5.16911154
GLT8D2	TC1200011752.hg.1	4.42430241	0.263891671	-13.02776774
SEL1L3	TC0400010282.hg.1	4.473816758	1.037101959	-5.025555244
PPP4R4	TC1400008058.hg.1	4.499254318	0	-4.385510122

CSTA	TC0300008550.hg.1	4.541076214	0	-4.451465373
STEAP2	TC0700008293.hg.1	4.55836121	1.037101959	-4.360839823
PROX1	TC0100011566.hg.1	4.643514318	0	-4.491378582
DPP4	TC0200014764.hg.1	4.789068817	1.607801004	-5.917287532
---	TC0600009216.hg.1	4.881460984	0.263891671	-3.078614728
KCNAB2	TC0100006675.hg.1	4.909964465	0	-2.097048168
STEAP1B	TC0700010443.hg.1	5.329541475	0	-4.007269857
PAG1	TC0800010926.hg.1	5.414377269	0	-3.330535901
CAMK2N1	TC0100013182.hg.1	5.532449332	0	-7.234500113
PPP1R14C	TC0600009831.hg.1	5.582812099	0	-4.254693874
EDNRA	TC0400008943.hg.1	5.744239226	0.407942629	-11.22627189
SIRPA	TC2000006501.hg.1	5.881272484	0	-3.48892681
TRIML2	TC0400012696.hg.1	5.921229752	0	-3.138032585
---	TC1900011214.hg.1	6.16400237	0	-4.450466804
GOS2	TC0100011453.hg.1	6.23476781	0	-3.556266234
SIRPD	TC2000009969.hg.1	6.292151175	0.407942629	-10.36716363
CD82	TC1100007394.hg.1	6.422328677	0	-23.59947729
VDR	TC1200010559.hg.1	6.424627978	1.607801004	-10.46185422
MAGEC2	TC0X00011001.hg.1	6.54786427	0	-1.935215192
---	TC0300011389.hg.1	6.721417021	0	-6.022566144
RAB27B	TC1800007360.hg.1	6.74721827	0	-8.690087278
BACE2	TC2100007198.hg.1	6.974796702	0	-6.06058196
XDH	TC0200012163.hg.1	7.272799228	0	-4.21040788
---	TC0900008601.hg.1	7.421623167	0.407942629	-4.96236894
STEAP1	TC0700008292.hg.1	8.129718603	0	-6.031375262
SIRPB1	TC2000009970.hg.1	8.146530884	0.263891671	-31.66886666
RIMS2	TC0800008487.hg.1	8.212628278	0	-5.471987748
THBS2	TC0600013998.hg.1	8.610560089	0	-7.779556975
LINC00973	TC0300008123.hg.1	8.62080843	0	-3.695842644
SLC16A6	TC1700011558.hg.1	8.637526111	1.607801004	-26.92650976
PTPRU	TC0100007584.hg.1	8.655144064	0	-10.12716179
FEZ1	TC1100012708.hg.1	9.233914239	0	-8.743379382
NTRK2	TC0900007752.hg.1	9.533549806	0.263891671	-11.02260259
reniru	TC2000008164.hg.1	9.888974482	0	-8.346515341
SLC14A1	TC1800007198.hg.1	10.41461005	0	-86.26066901
DUSP10	TC0100017420.hg.1	10.4417968	0	-8.818196751
starawbo	TC0100013053.hg.1	11.28481477	0	-3.637540556
NOV	TC0800008667.hg.1	11.93727181	2.472534784	-10.97107254
AOX1	TC0200010421.hg.1	13.0955296	0	-6.792429407
ADAMTS9	TC0300011391.hg.1	13.83054481	0	-17.27061238
WFDC2	TC2000007492.hg.1	14.3234521	0.664908359	-16.04767068

ITGA11	TC1500009861.hg.1	15.8731476	0.263891671	-35.12455396
---	TC2000009931.hg.1	16.00313241	0	-4.557135707
SSX1	TC0X00007176.hg.1	16.66698218	0	-7.074420624
TSPAN18	TC1100007400.hg.1	17.20424588	0	-16.16090405
PARM1	TC0400007868.hg.1	17.7883721	0	-10.60940615
CTSS	TC0100015752.hg.1	18.93459511	0	-33.90806768
---	TC2000009329.hg.1	19.19431053	0	-5.900531854
SEMA5A	TC0500010043.hg.1	22.73633009	0.407942629	-21.15614212
PRLR	TC0500010480.hg.1	24.11042901	0	-22.05171058
DNER	TC0200015958.hg.1	24.31982878	0	-14.22025075
TNFRSF11B	TC0800011611.hg.1	24.55307678	0	-28.99905535
MAN1A1	TC0600013010.hg.1	33.21966225	0	-2.903634776
WNT5A	TC0300011247.hg.1	36.39312838	0	-25.21837948
IL13RA2	TC0X00010557.hg.1	38.79299479	0	-6.721115362
MMP1	TC1100012131.hg.1	50.28268382	0	-18.91144023
STC1	TC0800009891.hg.1	58.5209824	0	-38.39723889
stawswu	TC0900008530.hg.1	78.5390731	0	-24.85262495
TNC	TC0900011305.hg.1	176.6674056	0	-24.13134349