

Headspace gas chromatography-mass spectrometry for volatile components analysis in *Ipomoea cairica* (L.) Sweet leaves: Natural deep eutectic solvents as green extraction and dilution matrix

Wei Zhang and Xianrui Liang *

Collaborative Innovation Center of Yangtze River Delta Region Green Pharmaceuticals,
College of Pharmaceutical Sciences, Zhejiang University of Technology, Hangzhou 310014, China;
liangxrivicky@zjut.edu.cn

* Correspondence: liangxrivicky@zjut.edu.cn; Tel.: +86-571-8832-0420

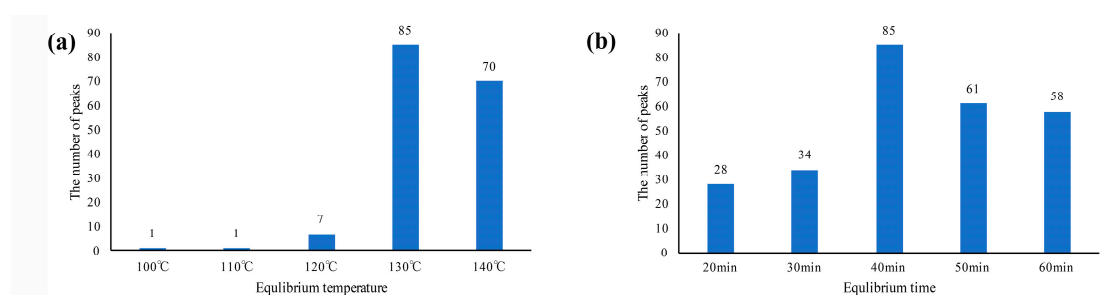


Figure S1. Comparison of the peak numbers obtained from different conditions: (a) different equilibrium temperatures; (b) different equilibrium time.

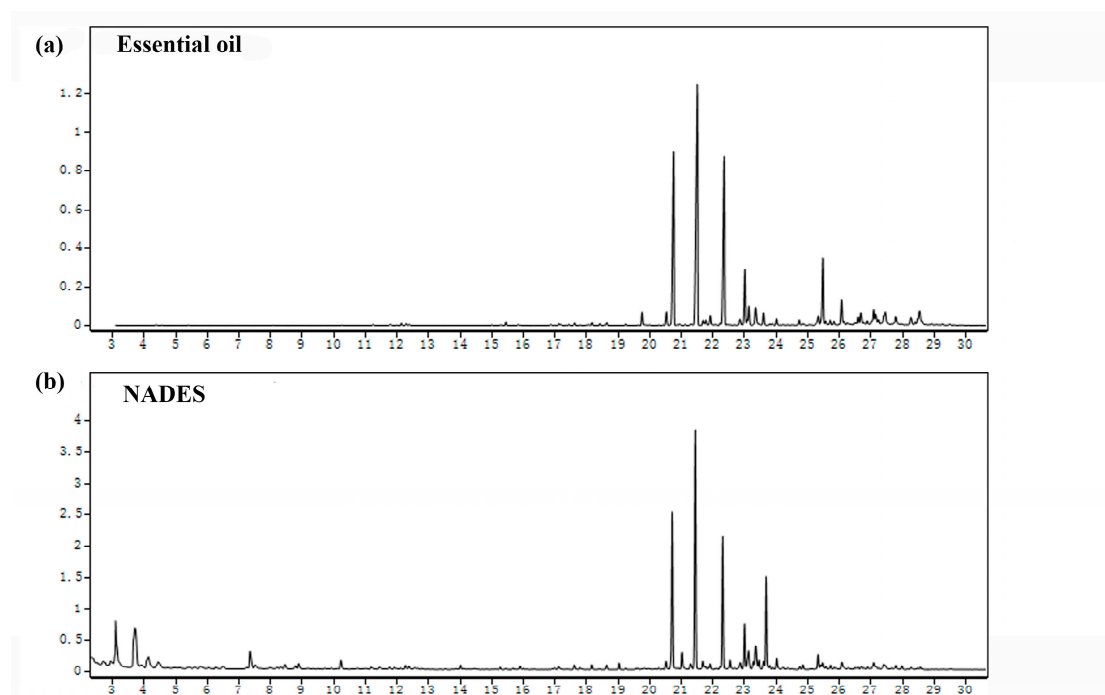


Figure S2. The comparison of the total ion chromatograms of ICS samples: (a) the ICS essential oil ; (b) the ICS powder in NADES -2 containing 15% water.