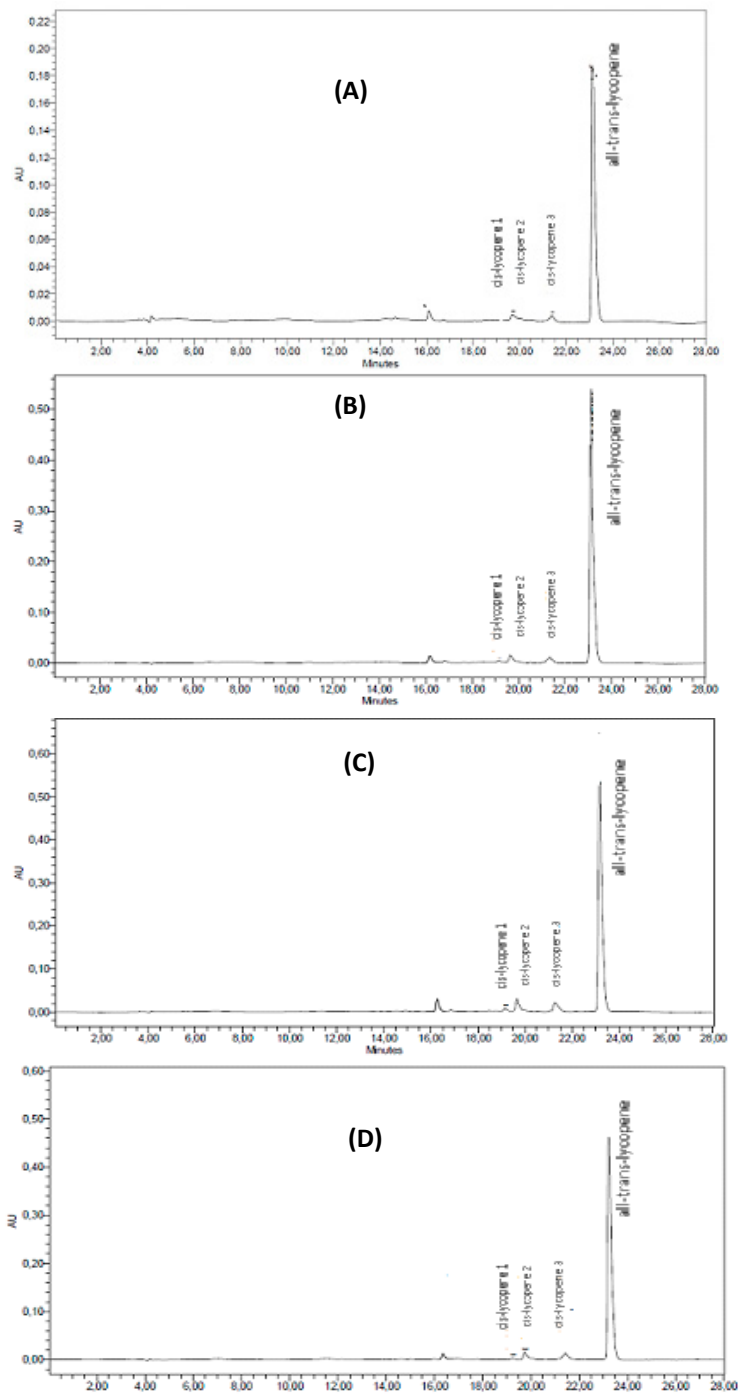


**Figure S1.** HPLC analysis of lycopene standard and UV spectrum of all-trans-lycopene (A) and cis-lycopene(B) .



**Figure S2.** HPLC analysis of Tomato Extract (A), Tomato Paste (B), Tomato Sauce (C) and Ketchup (D).

# CERTIFICATE OF ENGLISH EDITING

This document certifies that the paper listed below has been edited to ensure that the language is clear and free of errors. The edit was performed by professional editors at Editage, a division of Cactus Communications. The intent of the author's message was not altered in any way during the editing process. The quality of the edit has been guaranteed, with the assumption that our suggested changes have been accepted and have not been further altered without the knowledge of our editors.

## TITLE OF THE PAPER

Comparative analysis of lycopene content from different tomato-based food products on the cellular activity of prostate cancer cell lines.

## AUTHORS

Nathalia da Costa Pereira Soares, Monique de Barros Elias, Clara Lima Machado, Bruno Boquimpani Trindade, Radovan Borojevic, Anderson Junger Teodoro

## JOB CODE

ANEOD\_4



Signature

*Vikas Narang*

Vikas Narang,  
Senior Vice President,  
Operations-Author Services, Editage

Date of Issue  
April 29, 2019

Editage, a brand of Cactus Communications, offers professional English language editing and publication support services to authors engaged in over 500 areas of research. Through its community of experienced editors, which includes doctors, engineers, published scientists, and researchers with peer review experience, Editage has successfully helped authors get published in internationally reputed journals. Authors who work with Editage are guaranteed excellent language quality and timely delivery.



CACTUS

### Contact Editage

Worldwide  
request@editage.com  
+1 877-334-8243  
www.editage.com

Japan  
submissions@editage.com  
+81 03-6868-3348  
www.editage.jp

Korea  
submit-  
korea@editage.com  
1544-9241  
www.editage.co.kr

China  
fabiao@editage.cn  
400-005-6055  
www.editage.cn

Brazil  
contato@editage.com  
0800-892-20-97  
www.editage.com.br

Taiwan  
submitjobs@editage.com  
02 2657 0306  
www.editage.com.tw

Figure S3. Certificate of English Editing