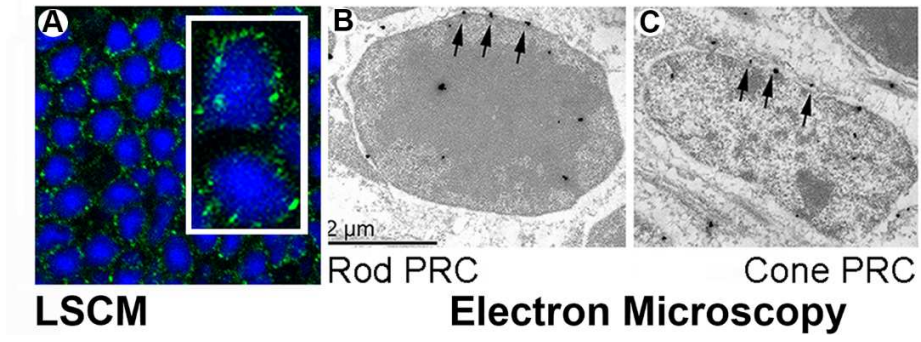
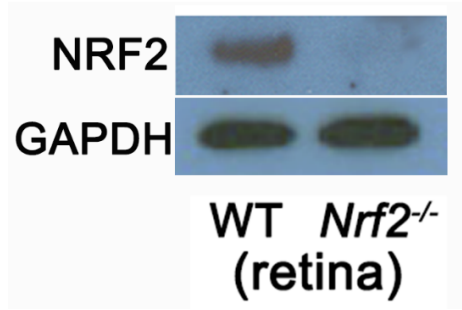


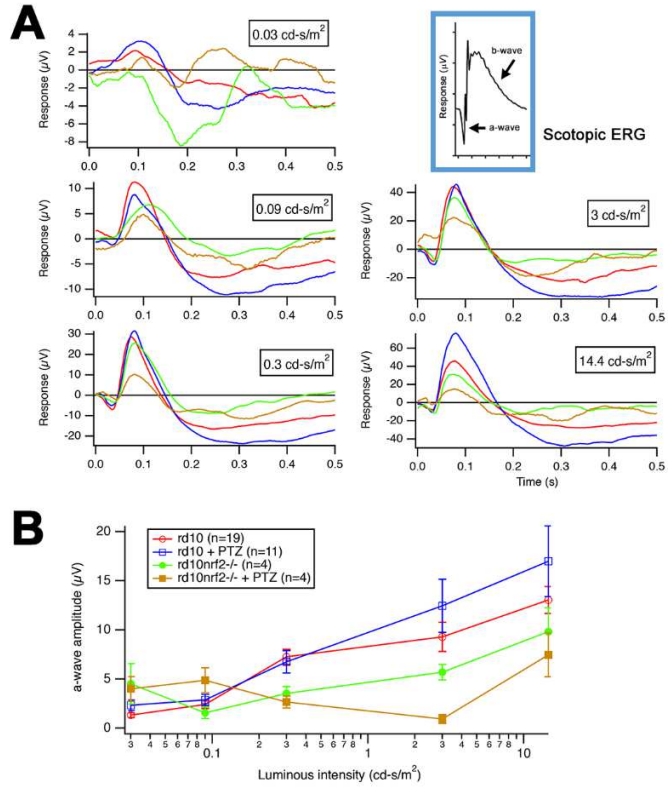
Supplemental Fig. 1.



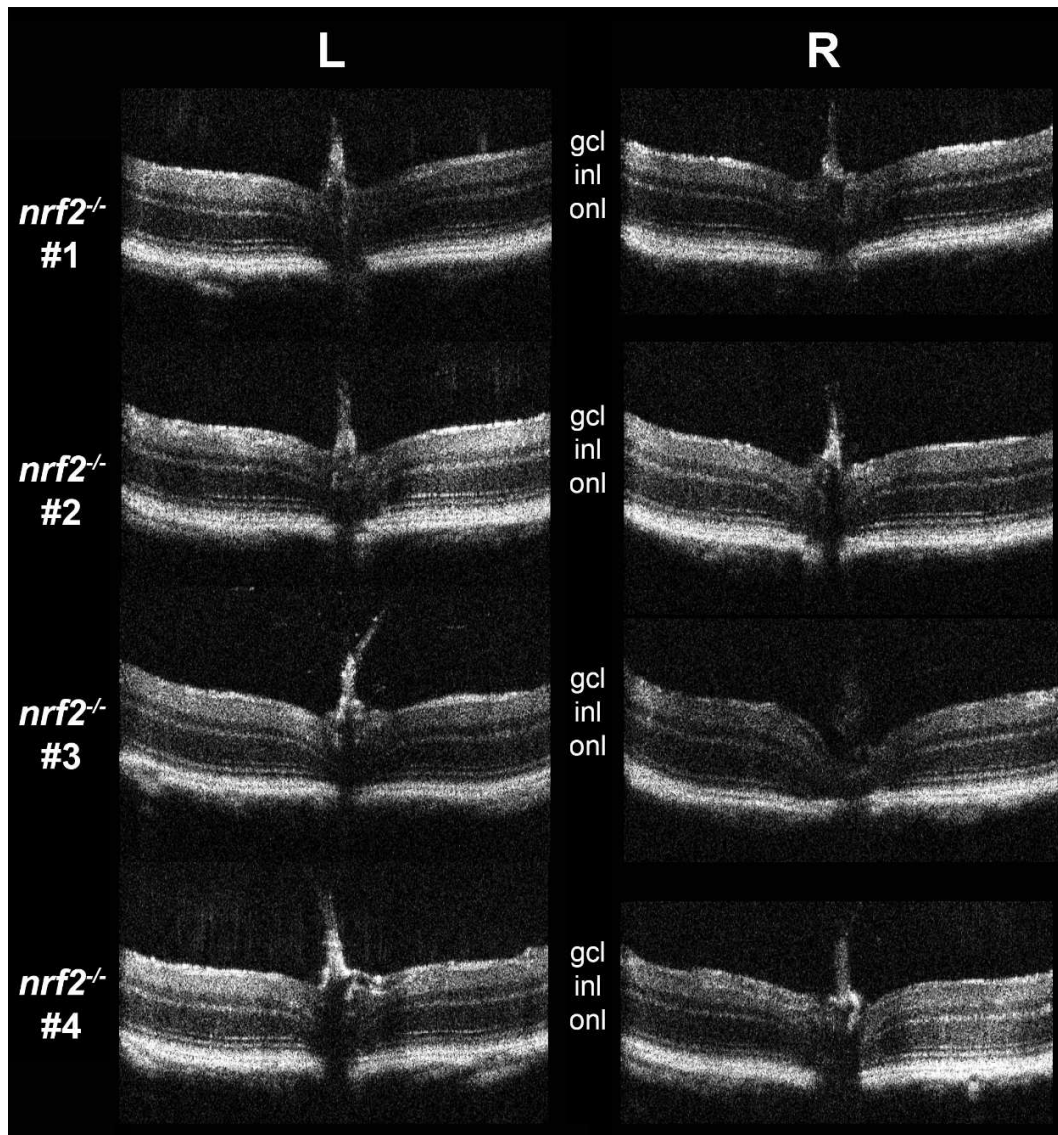
Supplemental Fig. 2.



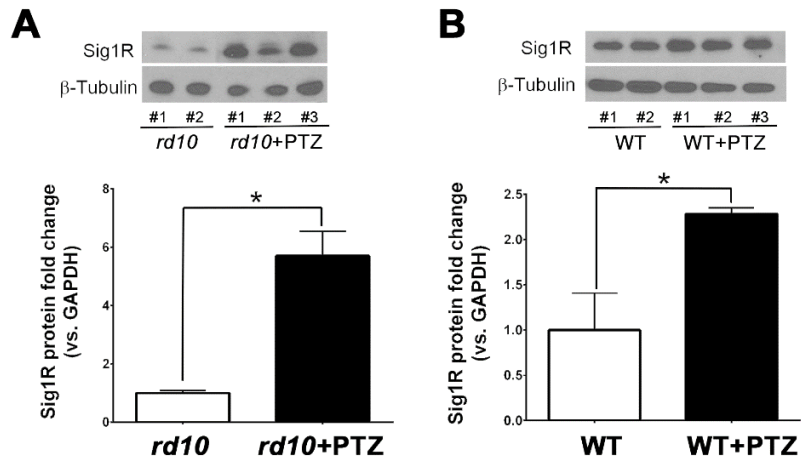
Supplemental Fig. 3



Supplemental Fig. 4



Supplemental Fig. 5



Supplemental Table 1. Numbers of animals used for retinal functional and structural analyses.

Mouse group	n	Age (post-natal days)
<i>Immunolocalization of Sig1R (LSCM & EM) & immunoblotting</i>		
<i>C57BL6/J (wildtype)</i>	9	35
<i>Verification of Nrf2 antibody</i>		
<i>Nrf2^{-/-}</i>	4	42
<i>ERG analysis of retinal function</i>		
<i>Pde6βrd10</i> (no-(+)-PTZ)	19	35
<i>Pde6βrd10</i> (0.5 mg kg ⁻¹ (+)-PTZ)	11	35
<i>Pde6βrd10/Nrf2^{-/-}</i> (no-(+)-PTZ)	4	35
<i>Pde6βrd10/Nrf2^{-/-}</i> (0.5 mg kg ⁻¹ (+)-PTZ)	4	35
<i>OCT analysis of retinal structure</i>		
<i>Pde6βrd10</i> (no-(+)-PTZ)	12	42
<i>Pde6βrd10</i> (0.5 mg kg ⁻¹ (+)-PTZ)	11	42
<i>Pde6βrd10/Nrf2^{-/-}</i> (no-(+)-PTZ)	7	42
<i>Pde6βrd10/Nrf2^{-/-}</i> (0.5 mg kg ⁻¹ (+)-PTZ)	8	42
<i>Nrf2^{-/-}</i> (no-(+)-PTZ)	4	42
<i>Immunohistochemistry</i>		
<i>Pde6βrd10</i> (no-(+)-PTZ)	9	42
<i>Pde6βrd10</i> (0.5 mg kg ⁻¹ (+)-PTZ)	7	42
<i>Pde6βrd10/Nrf2^{-/-}</i> (no-(+)-PTZ)	5	42
<i>Pde6βrd10/Nrf2^{-/-}</i> (0.5 mg kg ⁻¹ (+)-PTZ)	5	42
<i>Morphometric analysis</i>		
<i>Pde6βrd10</i> (no-(+)-PTZ)	3	42
<i>Pde6βrd10</i> (0.5 mg kg ⁻¹ (+)-PTZ)	3	42
<i>Pde6βrd10/Nrf2^{-/-}</i> (no-(+)-PTZ)	3	42
<i>Pde6βrd10/Nrf2^{-/-}</i> (0.5 mg kg ⁻¹ (+)-PTZ)	4	42