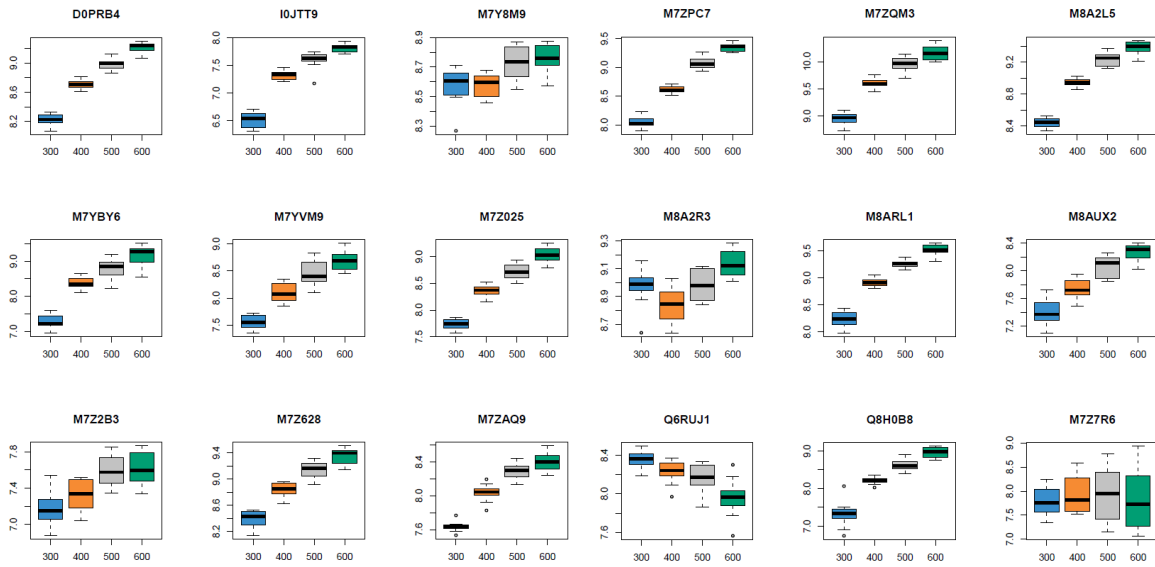
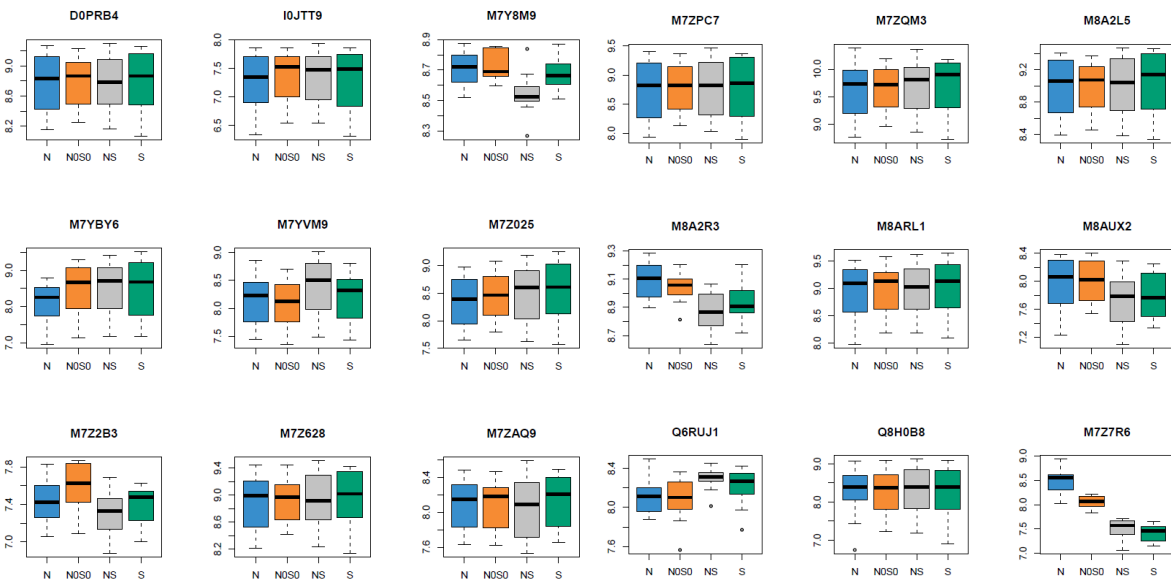


A



B



Supplementary Figure 4 Effects of stage (A) or N and S (B) supply on the quantity of AGs present in the network.

Development stages are expressed as thermal time after anthesis : 300 (blue), 400(orange), 500 (grey) or 600°C (green) days.

Nutrition status are no N and no S (NOS0, orange); N with no S (N, blue); S with low N (S, green) or high N and high S (NS, grey)