

Supplementary Online Content

Bauml JM, Mick R, Ciunci C, et al. Pembrolizumab after completion of locally ablative therapy for oligometastatic non–small cell lung cancer: a phase 2 trial. *JAMA Oncol*. Published online July 11, 2019. doi:10.1001/jamaoncol.2019.1449

eTable 1. Therapy After Progression on Trial

eTable 2. FACT-L Quality-of-Life Data

eFigure 1. Progression-Free Survival From Start of Locally Ablative Therapy by Metastatic Timing

eFigure 2. Progression-Free Survival From Start of Locally Ablative Therapy by PD-L1 Status

eFigure 3. Box Plot of FACT-L Total Score at Baseline, Week 8, and Week 16, Showing Median and Interquartile Range

This supplementary material has been provided by the authors to give readers additional information about their work.

eTable 1. Therapy After Progression on Trial

Subsequent therapy	n	%
Chemotherapy	11	47.8%
Stereotactic Radiation	10	43.5%
Standard Fraction Radiation	6	26.1%
No further therapy	6	26.1%
Immunotherapy	4	17.4%
Chemoradiotherapy	1	4.3%
Interventional Ablation	1	4.3%
Targeted therapy	1	4.3%

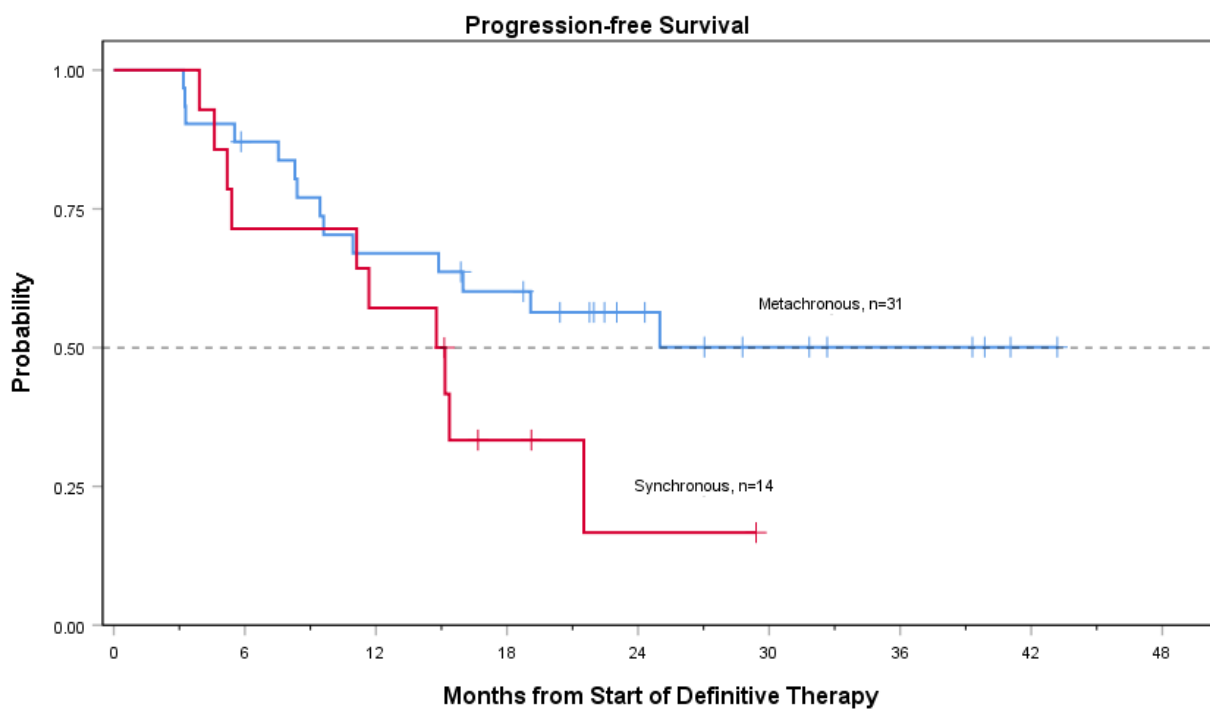
eTable 2. FACT-L Quality-of-Life Data

	FACT-L Total Score	
	Cycle 8	Cycle 16
Number with paired data	20	9
Baseline Mean ⁺	109.15	111.61
Follow-up Mean	104.80	112.78
Paired difference*, Mean (SE)	4.35 (3.90)	-1.17 (9.24)
P value	0.28	0.90

⁺ Baseline Mean values are based on the number of patients with paired data for that time point.

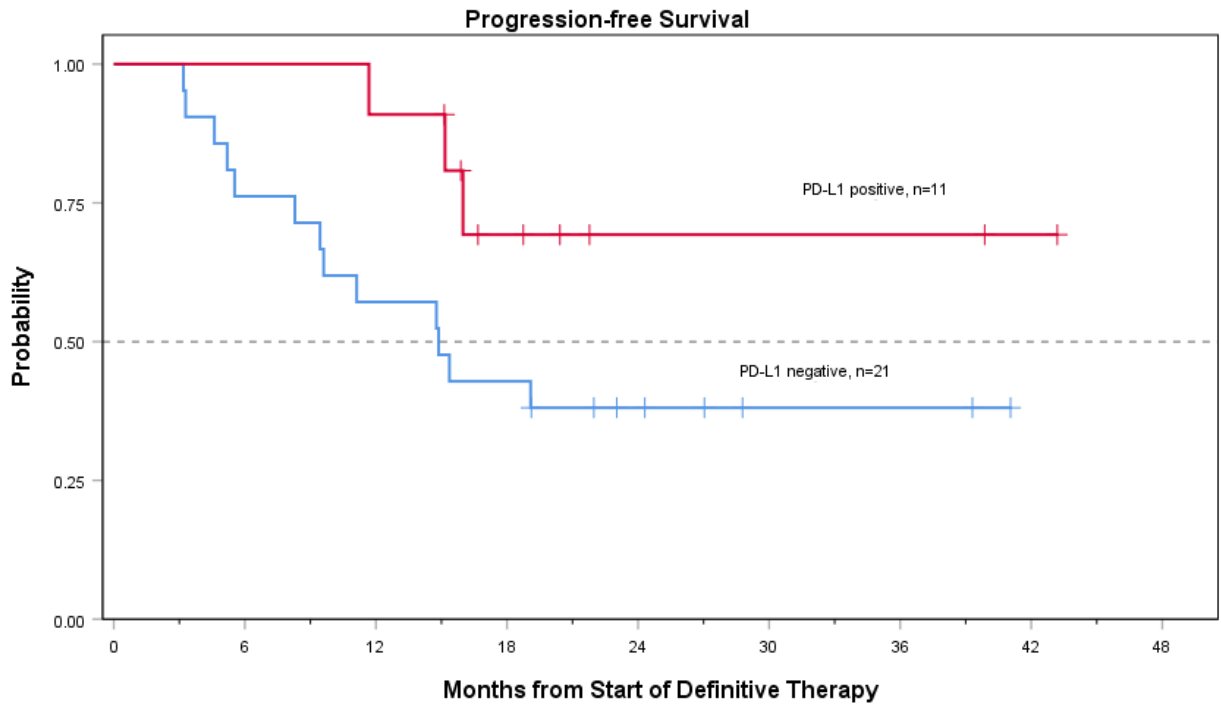
^{*} Paired difference = baseline minus follow-up.

eFigure 1. Progression-Free Survival From Start of Locally Ablative Therapy by Metastatic Timing



P = .10 by log-rank test

eFigure 2. Progression-Free Survival From Start of Locally Ablative Therapy by PD-L1 Status



P = .06 by log-rank test

eFigure 3. Box Plot of FACT-L Total Score at Baseline, Week 8, and Week 16, Showing Median and Interquartile Range

