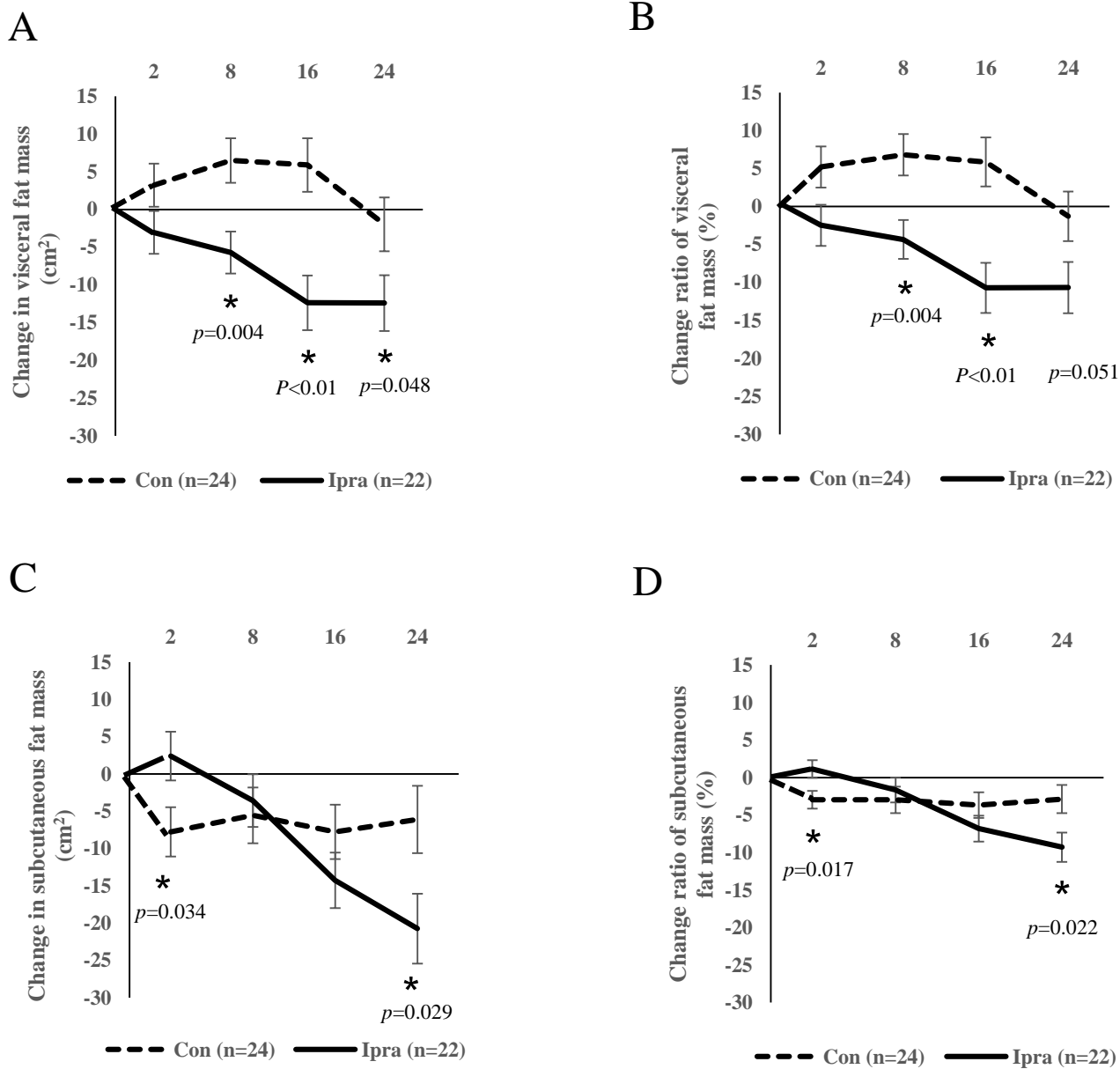


# Supplemental Fig. S3



## Supplemental Fig. S3. Visceral and subcutaneous fat evaluated with abdominal BIA.

A Change in visceral fat mass from 0 to 24 weeks.

B Percent change in visceral fat mass from 0 to 24 weeks.

C Change in subcutaneous fat mass from 0 to 24 weeks.

D Percent change in subcutaneous fat mass from 0 to 24 weeks.

Values are least square mean  $\pm$  SE. The P-values indicate comparisons of changes between Ipra group and Control group according to ANCOVA adjusted for sex. \*, P < 0.05.