

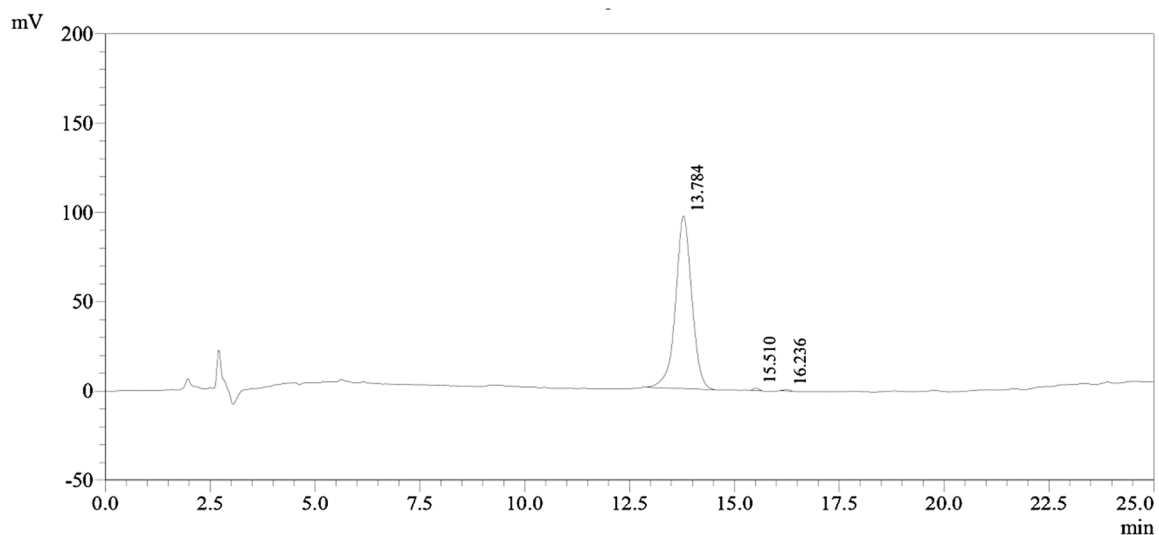
Bio-evaluation of Ranatuerin-2Pb from the Frog Skin Secretion of *Rana Pipiens* and its Truncated Analogues

Supplement materials:

```

M F T L K K S L L L F F F L G T I .
1 ATGTTACCT TGAAGAAATC CCTGTTACTC TTTTCTTTC TTGGGACCAT
TACAAGTGGG ACTTCTTTAG GGACAATGAG AAAAAGAAAG AACCTGGTA
. S L S L C E Q E R G A D D D Q G E
51 CTCTTATCT CTCTGTGAGC AAGAGAGAGG TGCCGATGAC GACCAAGGGG
GAGGAATAGA GAGACACTCG TTCTCTCTCC ACGGCTACTG CTGGTTCCCC
. V Q Q E V K R S F L T T V K K L
101 AAGTACAGCA AGAAGTAAAA AGAAGTTTCC TTAATACAGT CAAGAAGTTG
TTCATGTCGT TCTTCATTTT TCTTCAAAGG AATGATGTCA GTTCTTCAAC
V T N L A A L A G T V I D T I K C .
151 GTTACCAATC TGGCAGCACT GGCAGGGACT GTGATAGATA CCATAAAATG
CAATGGTTAG ACCGTCGTGA CCGTCCCTGA CACTATCTAT GGTATTTTAC
. K V T G G C R T *
201 TAAAGTTACT GGAGGATGTA GAACGTGAAT TGGAAGTCAT CTGATGTGGC
ATTTCAATGA CCTCCTACAT CTGCACTTA ACCTTCAGTA GACTACACCG
251 GTTCATTTAG CTAAATGCTA CATGTCTAAT AAAAAATACA AATTTACAAA
CAAGTAAATC GATTTACGAT GTACAGATTA TTTTATATGT TTAAAGTGTT
301 AAAAAAAAAA AAAAAAA
TTTTTTTTTT TTTTTT
```

Figure S1. Nucleotide and corresponding translated open-reading frame of precursor cDNA cloned from the skin secretion of Chinese piebald odorous frog cDNA library that encodes ranatuerin-2Pb. Putative signal peptide is double-underlined, mature peptide is single-underlined and stop codon is marked by asterisk.

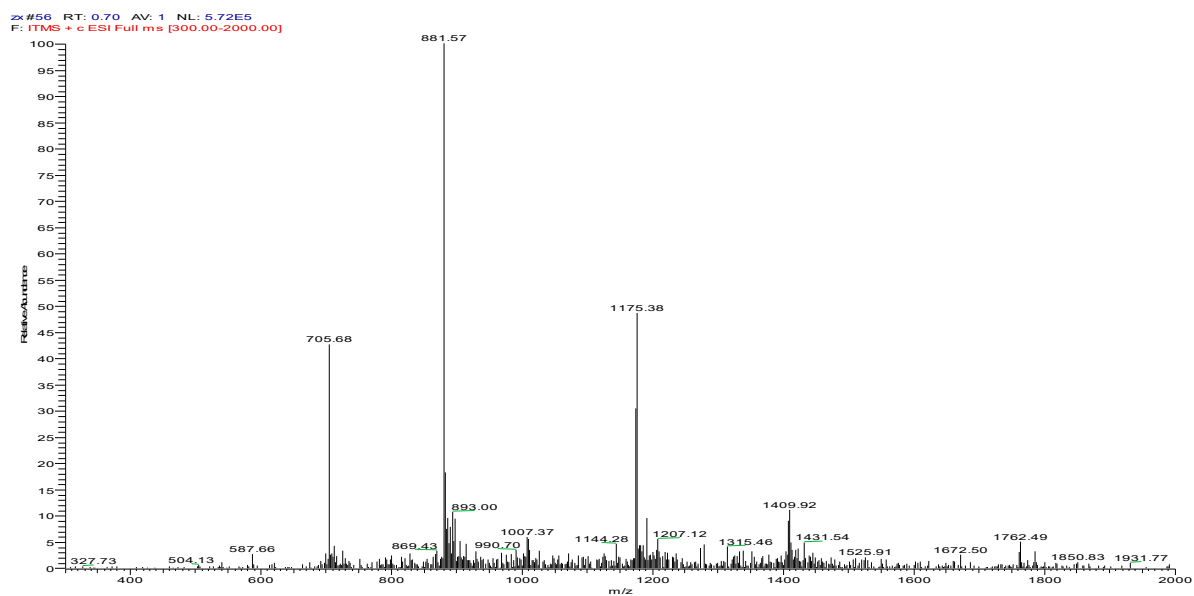


1 Det.A Ch1 / 220nm

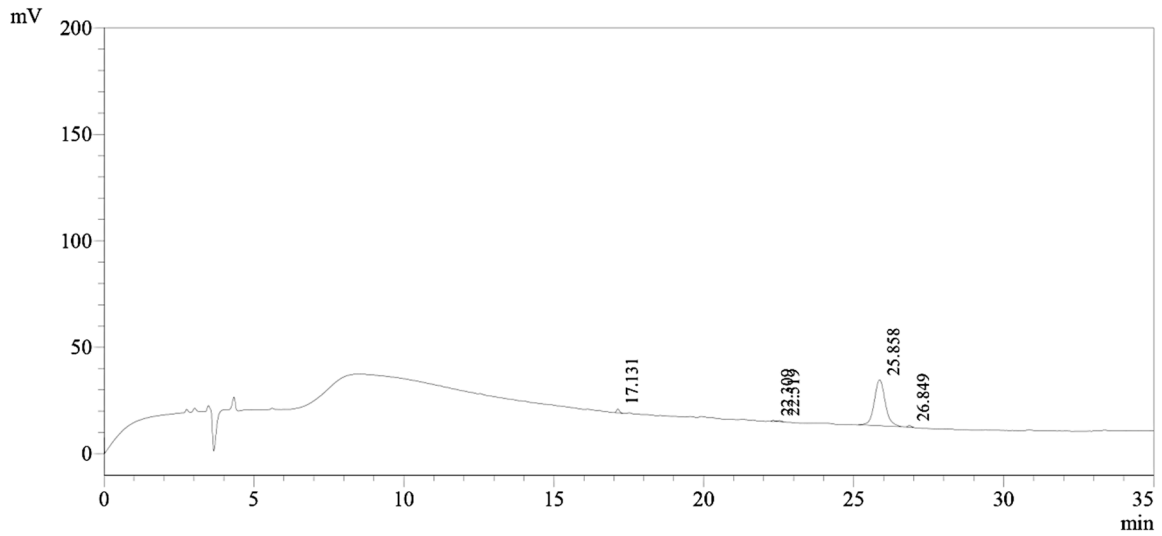
Peak Table

Detector A Ch1 220nm

Peak#	Ret. Time	Area	Height	Area %
1	13.784	2600668	96731	99.271
2	15.510	12142	1449	0.463
3	16.236	6945	783	0.265
Total		2619755	98963	100.000



(a)

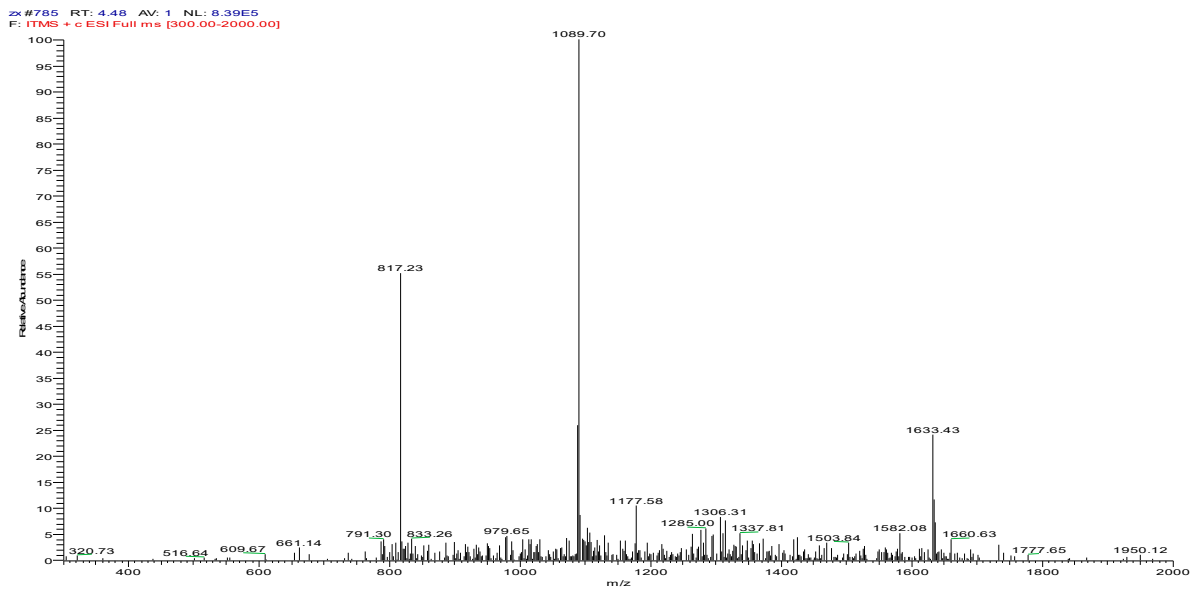


1 Det.A Ch1 / 220nm

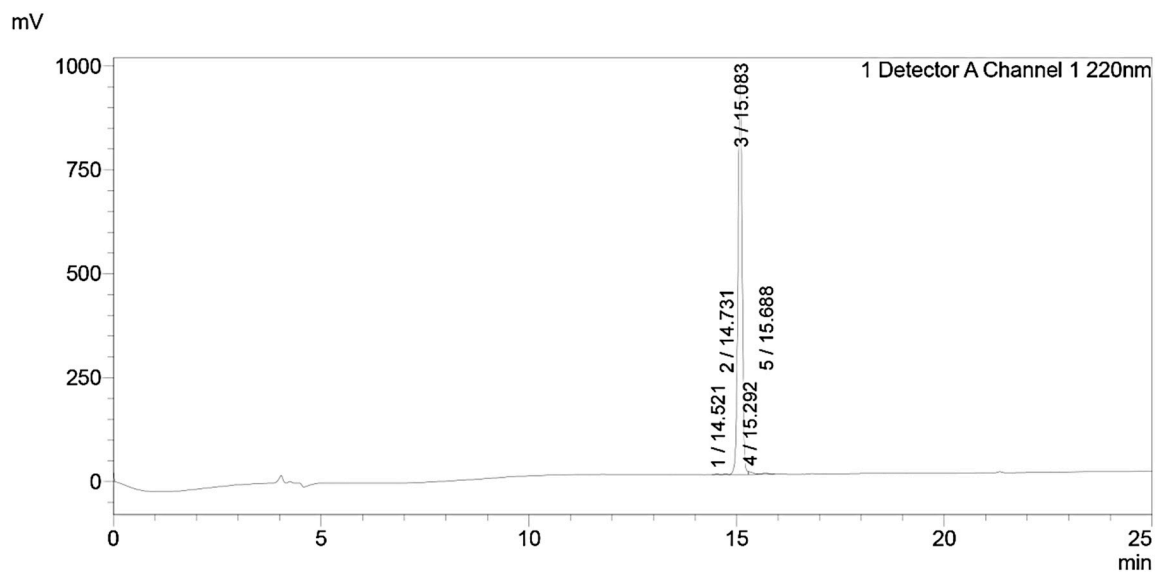
Peak Table

Detector A Ch1 220nm

Peak#	Ret. Time	Area	Height	Area %
1	17.131	12570	1835	2.195
2	22.309	3632	459	0.634
3	22.519	4692	505	0.819
4	25.858	545334	21581	95.228
5	26.849	6436	824	1.124
Total		572664	25205	100.000



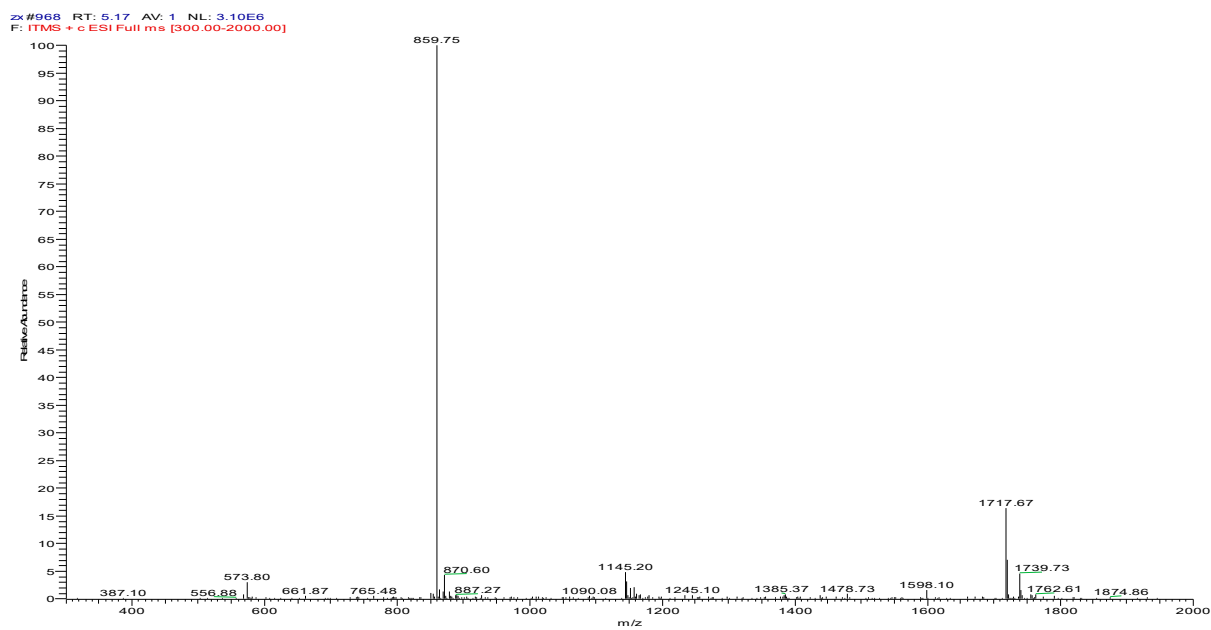
(b)



<Peak Table>

Detector A Channel 1 220nm

Peak#	Ret. Time	Area	Height	Area%
1	14.521	11565	2106	0.172
2	14.731	12738	2125	0.189
3	15.083	6632957	947951	98.515
4	15.292	45654	6695	0.678
5	15.688	29999	3834	0.446
Total		6732913	962711	100.000



(c)

Figure S2. RP-HPLC chromatogram and mass spectrums of synthesised peptides, ranatuerin-2Pb (a), RPa (b) and RPb (c).