

Different roles of PPAR gamma isoforms in prostate cancer

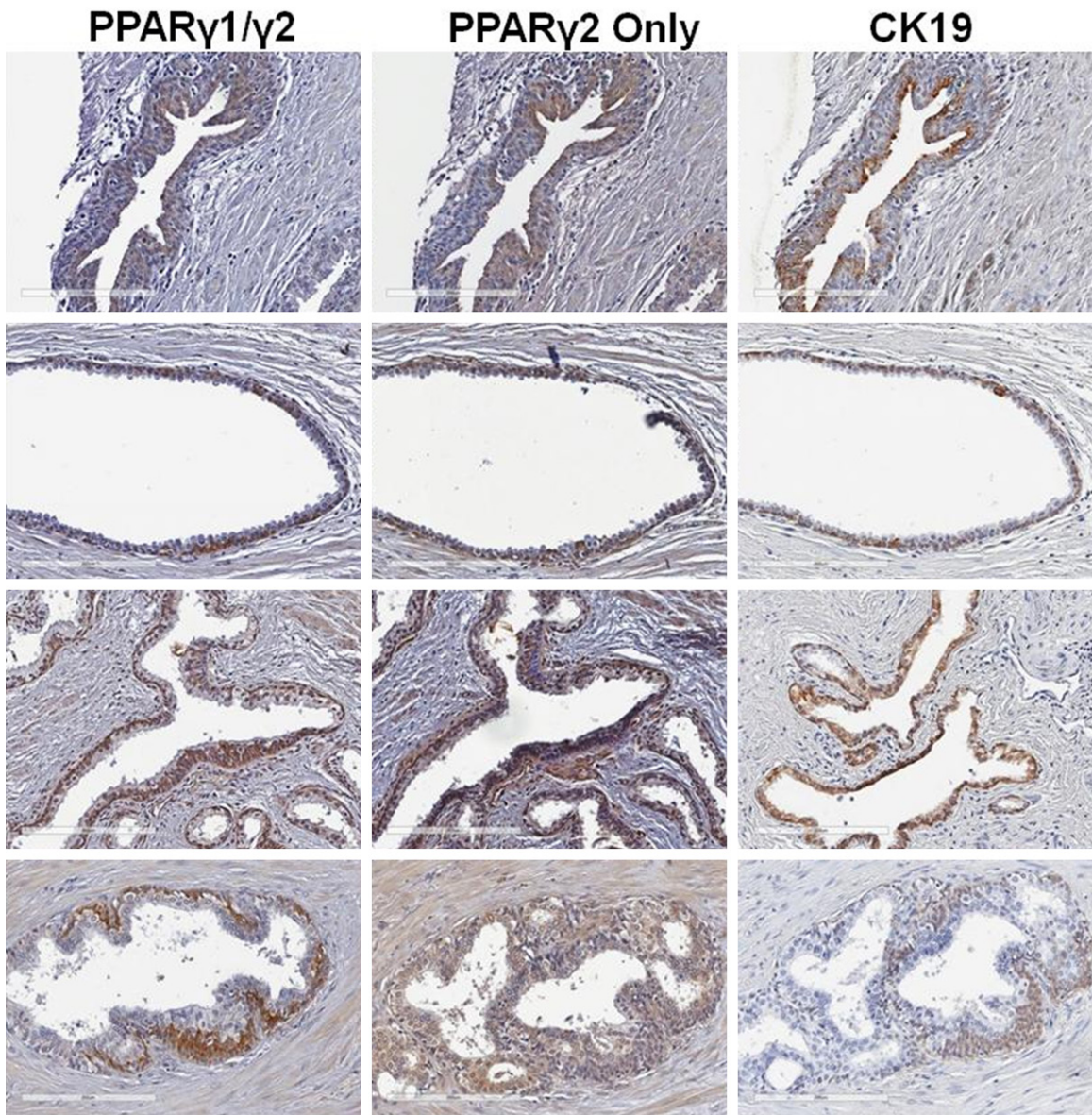


Figure S1. Additional examples of IHC staining. Additional examples of PPAR γ 1/2, PPAR γ 2, and CK19 IHC staining in benign glands. CK19 is a marker of intermediate cells. The physical location of these cells and detection of the CK19 antibody suggests that these are intermediate epithelial cells.

Different roles of PPAR gamma isoforms in prostate cancer

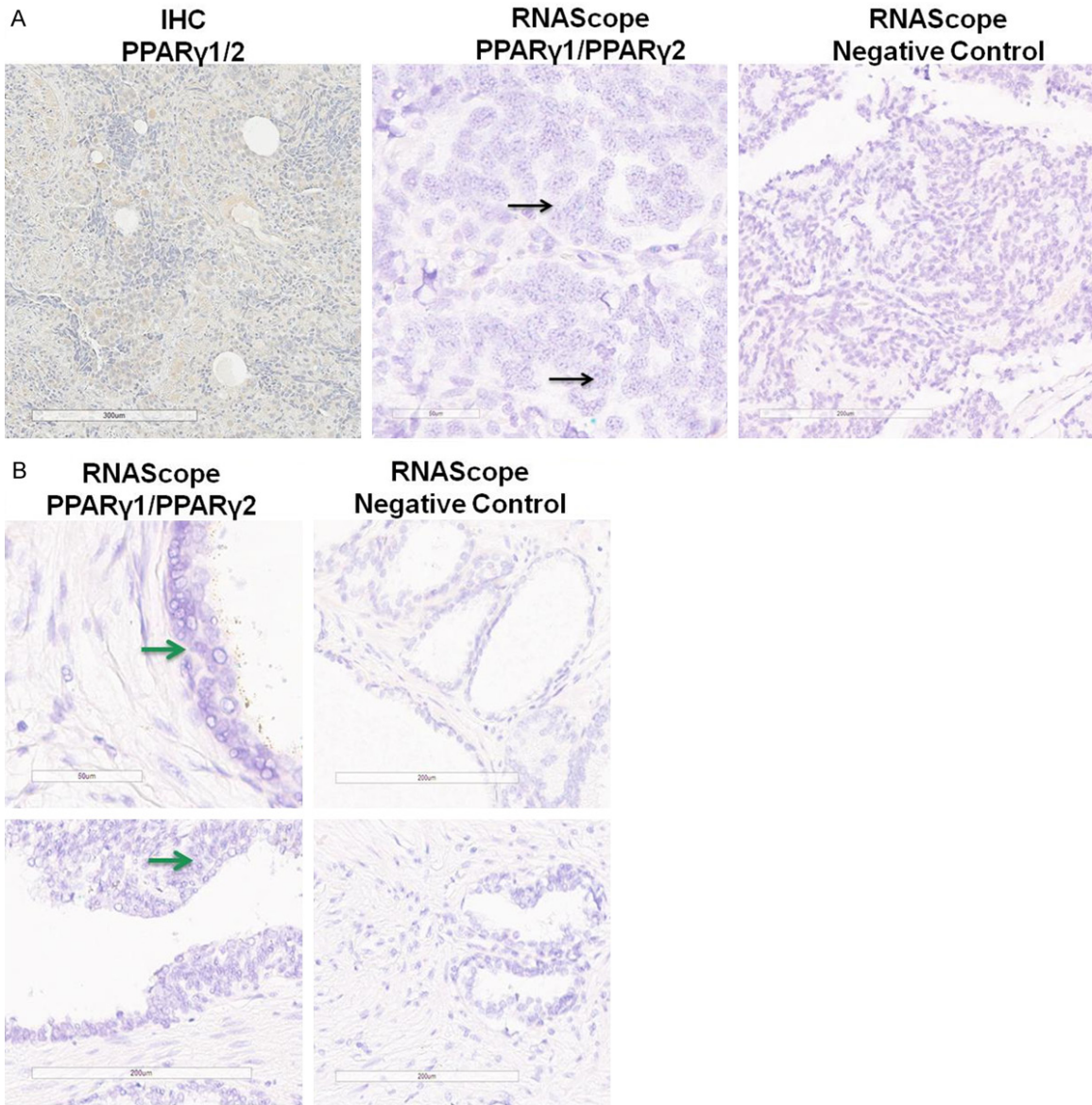


Figure S2. Additional examples of RNAScope staining. A. Additional example of staining in a metastatic PC sample demonstrating weak but widespread PPAR γ 1/2 IHC staining (left), expression of PPAR γ 1 by RNAScope (center), along with negative control RNAScope staining (right). B. Additional examples of RNAScope staining for PPAR γ 1 and PPAR γ 2 in benign glands showing only PPAR γ 1 expression in putative intermediate cells (left) along with negative controls (right).