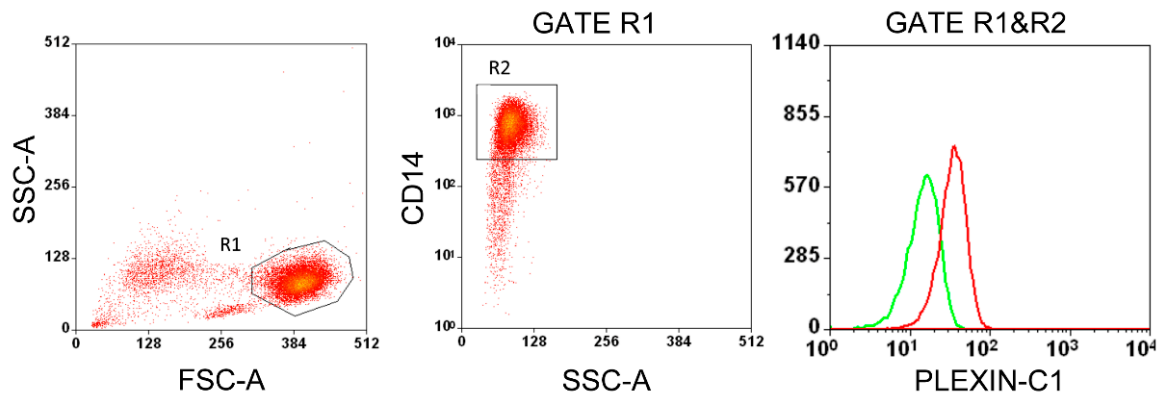


## Supplementary materials



**Figure S1.** Representative Flow Cytometry analysis showing the level of Plexin C1 on the surface of human monocytes.

**Table S1.** Proteins extracted from 30  $\mu$ g exosomes derived from the sample S-82 and identified by LC-MS/MS analyses.

F	DB	Accession	S	N M	S82-band 1-Description
1	N	NP_002017.1	1987	66	"fibronectin isoform 3 preproprotein [Homo sapiens]"
2	S	PGS1_HUMAN	630	19	"Biglycan OS=Homo sapiens OX=9606 GN=BGN PE=1 SV=2"
2	N	EAW72861.1	510	17	"biglycan isoform CRA_a [Homo sapiens]"
3	S	CO6A1_HUMAN	473	15	"Collagen alpha-1(VI) chain OS=Homo sapiens OX=9606 GN=COL6A1 PE=1 SV=3"
4	S	TARSH_HUMAN	362	10	"Target of Nesh-SH3 OS=Homo sapiens OX=9606 GN=ABI3BP PE=1 SV=1"
5	N	AAB94054.3	333	12	"pro alpha 1(I) collagen [Homo sapiens]"
5	N	AAA51995.1	282	11	"alpha 1 (I) chain propeptide partial [Homo sapiens]"
6	N	CAH56139.1	273	7	"hypothetical protein partial [Homo sapiens]"
7	S	A2MG_HUMAN	153	4	"Alpha-2-macroglobulin OS=Homo sapiens OX=9606 GN=A2M PE=1 SV=3"
8	S	ALBU_HUMAN	124	4	"Serum albumin OS=Homo sapiens OX=9606 GN=ALB PE=1 SV=2"
9	S	LAMC1_HUMAN	102	2	"Laminin subunit gamma-1 OS=Homo sapiens OX=9606 GN=LAMC1 PE=1 SV=3"
10	N	CAA23761.1	100	2	"unnamed protein product partial [Homo sapiens]"
11	S	FLNB_HUMAN	88	1	"Filamin-B OS=Homo sapiens OX=9606 GN=FLNB PE=1 SV=2"
12	S	VIME_HUMAN	83	1	"Vimentin OS=Homo sapiens OX=9606 GN=VIM PE=1 SV=4"
13	S	LAMB1_HUMAN	67	1	"Laminin subunit beta-1 OS=Homo sapiens OX=9606 GN=LAMB1 PE=1 SV=2"
14	S	HEMO_HUMAN	60	3	"Hemopexin OS=Homo sapiens OX=9606 GN=HPX PE=1 SV=2"

AN						
F	DB	Accession	S	N	M	S82-band 2-Description
15	S	TRFE_HUMAN	55	2		"Serotransferrin OS=Homo sapiens OX=9606 GN=TF PE=1 SV=3"
16	S	GPC1_HUMAN	53	2		"Glypican-1 OS=Homo sapiens OX=9606 GN=GPC1 PE=1 SV=2"
17	S	PTX3_HUMAN	49	1		"Pentraxin-related protein PTX3 OS=Homo sapiens OX=9606 GN=PTX3 PE=1 SV=3"
18	S	AMD_HUMAN	47	1		"Peptidyl-glycine alpha-amidating monooxygenase OS=Homo sapiens OX=9606 GN=PAM PE=1 SV=2"
19	N	SJM31191.1	46	3		"Sulfotransferase [Homo sapiens]"
20	N	AAA52002.1	46	1		"alpha-1 type III collagen partial [Homo sapiens]"
21	N	AAA53376.1	41	1		"fibronectin partial [Homo sapiens]"
22	S	TLN1_HUMAN	32	1		"Talin-1 OS=Homo sapiens OX=9606 GN=TLN1 PE=1 SV=3"
23	N	AKD42826.1	29	1		"anti-HIV-1 immunoglobulin light chain variable region partial [Homo sapiens]"
24	S	PLTP_HUMAN	25	1		"Phospholipid transfer protein OS=Homo sapiens OX=9606 GN=PLTP PE=1 SV=1"
25	S	UAP1L_HUMAN	19	1		"UDP-N-acetylhexosamine pyrophosphorylase-like protein 1 OS=Homo sapiens OX=9606 GN=UAP1L1 PE=1 SV=2"
1	S	CO6A1_HUMAN	2520	81		"Collagen alpha-1(VI) chain OS=Homo sapiens OX=9606 GN=COL6A1 PE=1 SV=3"
2	N	XP_005257115.2	720	19		"collagen alpha-1(I) chain isoform X2 [Homo sapiens]"
3	N	CAA23761.1	356	13		"unnamed protein product partial [Homo sapiens]"
4	S	CO6A2_HUMAN	311	12		"Collagen alpha-2(VI) chain OS=Homo sapiens OX=9606 GN=COL6A2 PE=1 SV=4"
5	N	NP_002017.1	191	5		"fibronectin isoform 3 preproprotein [Homo sapiens]"
6	N	XP_024301816.1	157	3		"alpha-mannosidase 2 isoform X2 [Homo sapiens]"
7	S	PGS1_HUMAN	122	3		"Biglycan OS=Homo sapiens OX=9606 GN=BGN PE=1 SV=2"
8	S	VINC_HUMAN	121	3		"Vinculin OS=Homo sapiens OX=9606 GN=VCL PE=1 SV=4"
9	S	SPTN1_HUMAN	92	3		"Spectrin alpha chain non-erythrocytic 1 OS=Homo sapiens OX=9606 GN=SPTAN1 PE=1 SV=3"
10	S	ALBU_HUMAN	89	3		"Serum albumin OS=Homo sapiens OX=9606 GN=ALB PE=1 SV=2"
11	S	PLTP_HUMAN	73	1		"Phospholipid transfer protein OS=Homo sapiens OX=9606 GN=PLTP PE=1 SV=1"
12	S	ACTN1_HUMAN	65	1		"Alpha-actinin-1 OS=Homo sapiens OX=9606 GN=ACTN1 PE=1 SV=2"

13	S	IPO5_HUMAN	64	1	"Importin-5 OS=Homo sapiens OX=9606 GN=IPO5 PE=1 SV=4"
14	N	AAB28324.1	49	1	"beta-fodrin partial [Homo sapiens]"
15	N	AAA52016.1	48	1	"complement H factor partial [Homo sapiens]"
16	S	A4_HUMAN	48	1	"Amyloid-beta A4 protein OS=Homo sapiens OX=9606 GN=APP PE=1 SV=3"
17	N	SJM28484.1	47	1	"Adenosylhomocysteinase [Homo sapiens]"
18	S	TRFE_HUMAN	47	1	"Serotransferrin OS=Homo sapiens OX=9606 GN=TF PE=1 SV=3"
19	S	A2MG_HUMAN	41	1	"Alpha-2-macroglobulin OS=Homo sapiens OX=9606 GN=A2M PE=1 SV=3"
20	S	ENPP2_HUMAN	36	1	"Ectonucleotide pyrophosphatase/phosphodiesterase family member 2 OS=Homo sapiens OX=9606 GN=ENPP2 PE=1 SV=3"
21	N	AAA52002.1	35	1	"alpha-1 type III collagen partial [Homo sapiens]"
22	N	SJM35999.1	33	1	"Trehalose/maltose import ATP-binding protein MalK [Homo sapiens]"
23	S	CSTN1_HUMAN	31	1	"Calsyntenin-1 OS=Homo sapiens OX=9606 GN=CLSTN1 PE=1 SV=1"
24	S	PROM2_HUMAN	30	1	"Prominin-2 OS=Homo sapiens OX=9606 GN=PROM2 PE=1 SV=1"
25	N	CAE45795.1	28	1	"hypothetical protein partial [Homo sapiens]"
26	S	AMPQ_HUMAN	24	1	"Aminopeptidase Q OS=Homo sapiens OX=9606 GN=LVRN PE=1 SV=4"
27	N	SJM31191.1	24	1	"Sulfotransferase [Homo sapiens]"
28	N	XP_024308106.1	23	1	"uracil phosphoribosyltransferase homolog isoform X1 [Homo sapiens]"
<b>F</b>	<b>DB</b>	<b>Accession</b>	<b>S</b>	<b>N</b> <b>M</b>	<b>S82-band 3-Description</b>
1	S	TRFE_HUMAN	741	31	"Serotransferrin OS=Homo sapiens OX=9606 GN=TF PE=1 SV=3"
2	S	QSOX1_HUMAN	468	15	"Sulfhydryl oxidase 1 OS=Homo sapiens OX=9606 GN=QSOX1 PE=1 SV=3"
3	S	CO6A1_HUMAN	419	14	"Collagen alpha-1(VI) chain OS=Homo sapiens OX=9606 GN=COL6A1 PE=1 SV=3"
4	S	ACTN4_HUMAN	403	12	"Alpha-actinin-4 OS=Homo sapiens OX=9606 GN=ACTN4 PE=1 SV=2"
4	N	ACJ24535.1	333	9	"actinin alpha 1 isoform 3 [Homo sapiens]"
5	S	LG3BP_HUMAN	387	23	"Galectin-3-binding protein OS=Homo sapiens OX=9606 GN=LGALS3BP PE=1 SV=1"
6	S	PLTP_HUMAN	229	7	"Phospholipid transfer protein OS=Homo sapiens OX=9606 GN=PLTP PE=1 SV=1"
7	S	SCG2_HUMAN	214	10	"Secretogranin-2 OS=Homo sapiens OX=9606 GN=SCG2 PE=1 SV=2"
8	S	BIP_HUMAN	166	4	"Endoplasmic reticulum chaperone BiP OS=Homo sapiens OX=9606 GN=HSPA5 PE=1 SV=2"

9	N	AAC34741.1	153	5	"semaphorin L partial [Homo sapiens]"
10	N	XP_005257115.2	151	4	"collagen alpha-1(I) chain isoform X2 [Homo sapiens]"
11	S	LUM_HUMAN	140	2	"Lumican OS=Homo sapiens OX=9606 GN=LUM PE=1 SV=2"
12	S	C1S_HUMAN	130	2	"Complement C1s subcomponent OS=Homo sapiens OX=9606 GN=C1S PE=1 SV=1"
13	N	CAA23761.1	126	3	"unnamed protein product partial [Homo sapiens]"
14	N	AAH23006.2	115	5	"HSP90AA1 protein partial [Homo sapiens]"
15	S	PGS1_HUMAN	111	2	"Biglycan OS=Homo sapiens OX=9606 GN=BGN PE=1 SV=2"
16	S	ALBU_HUMAN	97	4	"Serum albumin OS=Homo sapiens OX=9606 GN=ALB PE=1 SV=2"
17	S	MOES_HUMAN	96	4	"Moesin OS=Homo sapiens OX=9606 GN=MSN PE=1 SV=3"
18	S	PTX3_HUMAN	74	1	"Pentraxin-related protein PTX3 OS=Homo sapiens OX=9606 GN=PTX3 PE=1 SV=3"
19	S	CO6A2_HUMAN	66	2	"Collagen alpha-2(VI) chain OS=Homo sapiens OX=9606 GN=COL6A2 PE=1 SV=4"
20	S	FINC_HUMAN	60	2	"Fibronectin OS=Homo sapiens OX=9606 GN=FN1 PE=1 SV=4"
21	S	C1R_HUMAN	57	2	"Complement C1r subcomponent OS=Homo sapiens OX=9606 GN=C1R PE=1 SV=2"
22	N	EAW68718.1	54	2	"hemopexin isoform CRA_a [Homo sapiens]"
23	N	AAB05933.1	50	2	"extracellular matrix protein 1 [Homo sapiens]"
24	S	BGH3_HUMAN	51	1	"Transforming growth factor-beta-induced protein ig-h3 OS=Homo sapiens OX=9606 GN=TGFB1 PE=1 SV=1"
25	S	EF2_HUMAN	50	1	"Elongation factor 2 OS=Homo sapiens OX=9606 GN=EEF2 PE=1 SV=4"
26	S	EKI1_HUMAN	46	1	"Ethanolamine kinase 1 OS=Homo sapiens OX=9606 GN=ETNK1 PE=1 SV=1"
27	S	ENPL_HUMAN	42	1	"Endoplasmin OS=Homo sapiens OX=9606 GN=HSP90B1 PE=1 SV=1"
28	S	PLOD1_HUMAN	40	2	"Procollagen-lysine-2-oxoglutarate 5-dioxygenase 1 OS=Homo sapiens OX=9606 GN=PLOD1 PE=1 SV=2"
29	N	ACE74969.1	38	1	"immunoglobulin heavy chain variable region partial [Homo sapiens]"
30	S	FBLN1_HUMAN	37	1	"Fibulin-1 OS=Homo sapiens OX=9606 GN=FBLN1 PE=1 SV=4"
31	N	SJM31191.1	37	1	"Sulfotransferase [Homo sapiens]"
32	S	PTK7_HUMAN	28	1	"Inactive tyrosine-protein kinase 7 OS=Homo sapiens OX=9606 GN=PTK7 PE=1 SV=2"
33	N	EAW60825.1	24	1	"signal transducer and activator of transcription 3 (acute-phase response factor) isoform CRA_f [Homo sapiens]"
34	S	MEF2A_HUMAN	19	1	"Myocyte-specific enhancer factor 2A OS=Homo sapiens OX=9606 GN=MEF2A PE=1 SV=1"
<b>F</b>	<b>DB</b>	<b>Accession</b>	<b>S</b>	<b>N</b> <b>M</b>	<b>S82-band 4-Description</b>

1	S	BGH3_HUMAN	675	20	"Transforming growth factor-beta-induced protein ig-h3 OS=Homo sapiens OX=9606 GN=TGFB1 PE=1 SV=1"
2	S	ALBU_HUMAN	462	18	"Serum albumin OS=Homo sapiens OX=9606 GN=ALB PE=1 SV=2"
3	S	CO6A1_HUMAN	309	11	"Collagen alpha-1(VI) chain OS=Homo sapiens OX=9606 GN=COL6A1 PE=1 SV=3"
4	S	NUCB1_HUMAN	284	10	"Nucleobindin-1 OS=Homo sapiens OX=9606 GN=NUCB1 PE=1 SV=4"
5	S	HEMO_HUMAN	241	9	"Hemopexin OS=Homo sapiens OX=9606 GN=HPX PE=1 SV=2"
6	S	MMP2_HUMAN	189	5	"72 kDa type IV collagenase OS=Homo sapiens OX=9606 GN=MMP2 PE=1 SV=2"
7	S	LUM_HUMAN	147	3	"Lumican OS=Homo sapiens OX=9606 GN=LUM PE=1 SV=2"
8	S	TRFE_HUMAN	146	5	"Serotransferrin OS=Homo sapiens OX=9606 GN=TF PE=1 SV=3"
9	N	BAG64863.1	136	3	"unnamed protein product [Homo sapiens]"
10	N	CAA23761.1	125	3	"unnamed protein product partial [Homo sapiens]"
11	S	MOES_HUMAN	90	3	"Moesin OS=Homo sapiens OX=9606 GN=MSN PE=1 SV=3"
12	N	NP_000079.2	90	2	"collagen alpha-1(I) chain preproprotein [Homo sapiens]"
13	N	BAH11999.1	86	1	"unnamed protein product [Homo sapiens]"
14	N	SJM31191.1	81	8	"Sulfotransferase [Homo sapiens]"
15	S	SAP_HUMAN	71	1	"Prosaposin OS=Homo sapiens OX=9606 GN=PSAP PE=1 SV=2"
16	S	KPYM_HUMAN	69	1	"Pyruvate kinase PKM OS=Homo sapiens OX=9606 GN=PKM PE=1 SV=4"
17	S	SCG2_HUMAN	68	3	"Secretogranin-2 OS=Homo sapiens OX=9606 GN=SCG2 PE=1 SV=2"
18	S	PDIA3_HUMAN	65	2	"Protein disulfide-isomerase A3 OS=Homo sapiens OX=9606 GN=PDIA3 PE=1 SV=4"
19	S	ISLR_HUMAN	52	2	"Immunoglobulin superfamily containing leucine-rich repeat protein OS=Homo sapiens OX=9606 GN=ISLR PE=2 SV=1"
20	S	CO3A1_HUMAN	47	1	"Collagen alpha-1(III) chain OS=Homo sapiens OX=9606 GN=COL3A1 PE=1 SV=4"
21	S	OLFL3_HUMAN	45	2	"Olfactomedin-like protein 3 OS=Homo sapiens OX=9606 GN=OLFML3 PE=2 SV=1"
22	S	TSSK4_HUMAN	41	1	"Testis-specific serine/threonine-protein kinase 4 OS=Homo sapiens OX=9606 GN=TSSK4 PE=1 SV=1"
23	S	CH60_HUMAN	41	1	"60 kDa heat shock protein mitochondrial OS=Homo sapiens OX=9606 GN=HSPD1 PE=1 SV=2"
24	S	PTX3_HUMAN	37	1	"Pentraxin-related protein PTX3 OS=Homo sapiens OX=9606 GN=PTX3 PE=1 SV=3"
25	S	ANT3_HUMAN	36	1	"Antithrombin-III OS=Homo sapiens OX=9606 GN=SERPINC1 PE=1 SV=1"

26	N	NP_001333184.1	31	1	"ubiquitin carboxyl-terminal hydrolase 28 isoform f [Homo sapiens]"
27	S	PLTP_HUMAN	30	1	"Phospholipid transfer protein OS=Homo sapiens OX=9606 GN=PLTP PE=1 SV=1"
28	N	AAH21119.1	29	1	"GAPVD1 protein [Homo sapiens]"
29	N	AAQ62468.1	28	1	"thioredoxin reductase 1 partial [Homo sapiens]"
30	N	AAA52018.1	25	1	"chromogranin A [Homo sapiens]"
31	S	CAD23_HUMAN	25	1	"Cadherin-23 OS=Homo sapiens OX=9606 GN=CDH23 PE=1 SV=2"
32	S	MCPH1_HUMAN	24	1	"Microcephalin OS=Homo sapiens OX=9606 GN=MCPH1 PE=1 SV=4"
33	S	CD109_HUMAN	23	1	"CD109 antigen OS=Homo sapiens OX=9606 GN=CD109 PE=1 SV=2"
34	S	DYN3_HUMAN	22	1	"Dynamin-3 OS=Homo sapiens OX=9606 GN=DNM3 PE=1 SV=4"
35	N	SJM33335.1	20	1	"Cytochrome P450 [Homo sapiens]"
36	S	CO3_HUMAN	20	1	"Complement C3 OS=Homo sapiens OX=9606 GN=C3 PE=1 SV=2"
<b>F</b>	<b>DB</b>	<b>Accession</b>	<b>S</b>	<b>N</b> <b>M</b>	<b>S82-band 5-Description</b>
1	S	PAI1_HUMAN	1624	44	"Plasminogen activator inhibitor 1 OS=Homo sapiens OX=9606 GN=SERPINE1 PE=1 SV=1"
2	S	ACTB_HUMAN	350	16	"Actin cytoplasmic 1 OS=Homo sapiens OX=9606 GN=ACTB PE=1 SV=1"
3	S	PTX3_HUMAN	304	8	"Pentraxin-related protein PTX3 OS=Homo sapiens OX=9606 GN=PTX3 PE=1 SV=3"
4	N	NP_000079.2	245	6	"collagen alpha-1(I) chain preproprotein [Homo sapiens]"
5	S	ISLR_HUMAN	220	6	"Immunoglobulin superfamily containing leucine-rich repeat protein OS=Homo sapiens OX=9606 GN=ISLR PE=2 SV=1"
6	S	TRFE_HUMAN	197	7	"Serotransferrin OS=Homo sapiens OX=9606 GN=TF PE=1 SV=3"
7	S	ENOA_HUMAN	183	3	"Alpha-enolase OS=Homo sapiens OX=9606 GN=ENO1 PE=1 SV=2"
8	S	ALBU_HUMAN	178	5	"Serum albumin OS=Homo sapiens OX=9606 GN=ALB PE=1 SV=2"
9	S	HEMO_HUMAN	167	6	"Hemopexin OS=Homo sapiens OX=9606 GN=HPX PE=1 SV=2"
10	S	SPRC_HUMAN	140	7	"SPARC OS=Homo sapiens OX=9606 GN=SPARC PE=1 SV=1"
11	S	ALDOA_HUMAN	132	4	"Fructose-bisphosphate aldolase A OS=Homo sapiens OX=9606 GN=ALDOA PE=1 SV=2"
12	S	CO6A1_HUMAN	121	3	"Collagen alpha-1(VI) chain OS=Homo sapiens OX=9606 GN=COL6A1 PE=1 SV=3"
13	S	VIME_HUMAN	117	4	"Vimentin OS=Homo sapiens OX=9606 GN=VIM PE=1 SV=4"

		N			
13	N	AAA61281.2	112	4	"vimentin partial [Homo sapiens]"
14	N	CAA23761.1	109	4	"unnamed protein product partial [Homo sapiens]"
15	N	AAA52002.1	104	2	"alpha-1 type III collagen partial [Homo sapiens]"
16	S	FSTL1_HUMAN	92	3	"Follistatin-related protein 1 OS=Homo sapiens OX=9606 GN=FSTL1 PE=1 SV=1"
17	N	AAX62798.1	82	2	"aberrant LSLCL [Homo sapiens]"
18	S	PCOC1_HUMAN	76	3	"Procollagen C-endopeptidase enhancer 1 OS=Homo sapiens OX=9606 GN=PCOLCE PE=1 SV=2"
19	S	FINC_HUMAN	72	1	"Fibronectin OS=Homo sapiens OX=9606 GN=FN1 PE=1 SV=4"
20	S	TGFB2_HUMAN	65	1	"Transforming growth factor beta-2 OS=Homo sapiens OX=9606 GN=TGFB2 PE=1 SV=1"
21	S	SPI2_HUMAN	63	3	"Serpine I2 OS=Homo sapiens OX=9606 GN=SERPINI2 PE=1 SV=1"
22	S	CBPA4_HUMAN	51	1	"Carboxypeptidase A4 OS=Homo sapiens OX=9606 GN=CPA4 PE=1 SV=2"
23	S	LRC40_HUMAN	36	1	"Leucine-rich repeat-containing protein 40 OS=Homo sapiens OX=9606 GN=LRRC40 PE=1 SV=1"
24	N	CAD38944.1	35	1	"hypothetical protein partial [Homo sapiens]"
25	N	XP_016875684.1	31	1	"ubiquitin-protein ligase E3B isoform X5 [Homo sapiens]"
26	S	MMP1_HUMAN	23	1	"Interstitial collagenase OS=Homo sapiens OX=9606 GN=MMP1 PE=1 SV=3"
27	S	CATL1_HUMAN	22	1	"Cathepsin L1 OS=Homo sapiens OX=9606 GN=CTSL PE=1 SV=2"
28	N	BAG52708.1	21	1	"unnamed protein product [Homo sapiens]"
29	N	ADE73599.1	21	1	"MHC class I antigen partial [Homo sapiens]"
30	N	EAX10114.1	20	1	"chromosome 20 open reading frame 3 isoform CRA_b [Homo sapiens]"
31	S	EPC1_HUMAN	19	1	"Enhancer of polycomb homolog 1 OS=Homo sapiens OX=9606 GN=EPC1 PE=1 SV=1"
<b>F</b>	<b>DB</b>	<b>Accession</b>	<b>S</b>	<b>N</b>	<b>M</b>
					<b>S82-band 6-Description</b>
1	N	CAA39142.1	1843	58	"type I collagen partial [Homo sapiens]"
2	N	AAA51995.1	1518	50	"alpha 1 (I) chain propeptide partial [Homo sapiens]"
3	S	CO3A1_HUMAN	411	10	"Collagen alpha-1(III) chain OS=Homo sapiens OX=9606 GN=COL3A1 PE=1 SV=4"
4	S	APOE_HUMAN	298	9	"Apolipoprotein E OS=Homo sapiens OX=9606 GN=APOE PE=1 SV=1"
5	N	BAA01989.1	239	5	"human non-muscle myosin heavy chain partial [Homo sapiens]"
6	S	TPM4_HUMAN	215	7	"Tropomyosin alpha-4 chain OS=Homo sapiens OX=9606 GN=TPM4 PE=1 SV=3"
6	N	AAL84570.1	150	4	"TPMsk3 partial [Homo sapiens]"

7	N	NP_001158887.1	206	4	"L-lactate dehydrogenase A chain isoform 4 [Homo sapiens]"
8	S	CO6A1_HUMAN	201	6	"Collagen alpha-1(VI) chain OS=Homo sapiens OX=9606 GN=COL6A1 PE=1 SV=3"
9	S	CO5A1_HUMAN	179	7	"Collagen alpha-1(V) chain OS=Homo sapiens OX=9606 GN=COL5A1 PE=1 SV=3"
9	N	NP_001265003.1	155	6	"collagen alpha-1(V) chain isoform 2 preproprotein [Homo sapiens]"
10	S	ALDOA_HUMAN	155	4	"Fructose-bisphosphate aldolase A OS=Homo sapiens OX=9606 GN=ALDOA PE=1 SV=2"
11	S	LDHB_HUMAN	152	4	"L-lactate dehydrogenase B chain OS=Homo sapiens OX=9606 GN=LDHB PE=1 SV=2"
12	S	IBP6_HUMAN	147	4	"Insulin-like growth factor-binding protein 6 OS=Homo sapiens OX=9606 GN=IGFBP6 PE=1SV=1"
13	S	CLUS_HUMAN	138	4	"Clusterin OS=Homo sapiens OX=9606 GN=CLU PE=1 SV=1"
14	S	IBP7_HUMAN	135	5	"Insulin-like growth factor-binding protein 7 OS=Homo sapiens OX=9606 GN=IGFBP7 PE=1 SV=1"
15	S	TIMP1_HUMAN	121	2	"Metalloproteinase inhibitor 1 OS=Homo sapiens OX=9606 GN=TIMP1 PE=1 SV=1"
16	S	SODE_HUMAN	121	2	"Extracellular superoxide dismutase [Cu-Zn] OS=Homo sapiens OX=9606 GN=SOD3 PE=1 SV=2"
17	S	FBN1_HUMAN	116	4	"Fibrillin-1 OS=Homo sapiens OX=9606 GN=FBN1 PE=1 SV=3"
18	S	ALBU_HUMAN	94	3	"Serum albumin OS=Homo sapiens OX=9606 GN=ALB PE=1 SV=2"
19	N	BAG60757.1	93	2	"unnamed protein product [Homo sapiens]"
20	S	STC1_HUMAN	88	1	"Stanniocalcin-1 OS=Homo sapiens OX=9606 GN=STC1 PE=1 SV=1"
21	S	VIME_HUMAN	87	2	"Vimentin OS=Homo sapiens OX=9606 GN=VIM PE=1 SV=4"
22	S	ITIH4_HUMAN	71	1	"Inter-alpha-trypsin inhibitor heavy chain H4 OS=Homo sapiens OX=9606 GN=ITIH4 PE=1 SV=4"
23	S	EXTL2_HUMAN	65	1	"Exostosin-like 2 OS=Homo sapiens OX=9606 GN=EXTL2 PE=1 SV=1"
24	S	HEMO_HUMAN	56	2	"Hemopexin OS=Homo sapiens OX=9606 GN=HPX PE=1 SV=2"
25	S	G3P_HUMAN	52	1	"Glyceraldehyde-3-phosphate dehydrogenase OS=Homo sapiens OX=9606 GN=GAPDH PE=1 SV=3"
26	S	CTHR1_HUMAN	49	1	"Collagen triple helix repeat-containing protein 1 OS=Homo sapiens OX=9606 GN=CTHRC1 PE=1 SV=1"
27	S	RLA0L_HUMAN	48	1	"60S acidic ribosomal protein P0-like OS=Homo sapiens OX=9606 GN=RPLP0P6 PE=5 SV=1"
28	S	GXLT1_HUMAN	43	1	"Glucoside xylosyltransferase 1 OS=Homo sapiens OX=9606 GN=GXYLT1 PE=1 SV=2"



N					
29	N	AAH28145.1	38	1	"THBS1 protein partial [Homo sapiens]"
30	S	ALDOC_HUMAN	38	1	"Fructose-bisphosphate aldolase C OS=Homo sapiens OX=9606 GN=ALDOC PE=1 SV=2"
31	S	FINC_HUMAN	37	1	"Fibronectin OS=Homo sapiens OX=9606 GN=FN1 PE=1 SV=4"
32	N	SJM31191.1	37	1	"Sulfotransferase [Homo sapiens]"
33	S	PAI1_HUMAN	35	1	"Plasminogen activator inhibitor 1 OS=Homo sapiens OX=9606 GN=SERPINE1 PE=1 SV=1"
34	S	TRFE_HUMAN	33	1	"Serotransferrin OS=Homo sapiens OX=9606 GN=TF PE=1 SV=3"
35	S	PRS23_HUMAN	32	1	"Serine protease 23 OS=Homo sapiens OX=9606 GN=PRSS23 PE=1 SV=1"
36	S	GTPB2_HUMAN	21	1	"GTP-binding protein 2 OS=Homo sapiens OX=9606 GN=GTPBP2 PE=1 SV=1"

LC-MS/MS: Liquid Chromatography Mass Spectrometry.

**Table S2.** Proteins extracted from 30 µg exosomes derived from the sample S-104 and identified by LC-MS/MS analyses.

F	DB	Accession	S	N M	S104-band 1-Description
1	N	NP_997647.1	1629	54	"fibronectin isoform 1 precursor [Homo sapiens]"
2	S	ALBU_HUMAN	294	14	"Serum albumin OS=Homo sapiens OX=9606 GN=ALB PE=1 SV=2"
3	S	A2MG_HUMAN	160	7	"Alpha-2-macroglobulin OS=Homo sapiens OX=9606 GN=A2M PE=1 SV=3"
4	S	PGS1_HUMAN	157	6	"Biglycan OS=Homo sapiens OX=9606 GN=BGN PE=1 SV=2"
5	N	SJM31191.1	89	7	"Sulfotransferase [Homo sapiens]"
6	S	TRFE_HUMAN	65	2	"Serotransferrin OS=Homo sapiens OX=9606 GN=TF PE=1 SV=3"
7	S	CERU_HUMAN	43	1	"Ceruloplasmin OS=Homo sapiens OX=9606 GN=CP PE=1 SV=1"
8	N	SJM28737.1	40	1	"Cytosine deaminase [Homo sapiens]"
9	N	EAW62750.1	19	1	"hCG2041930 partial [Homo sapiens]"
F	DB	Accession	S	N M	S104-band 2-Description
1	S	CO6A1_HUMAN	705	20	"Collagen alpha-1(VI) chain OS=Homo sapiens OX=9606 GN=COL6A1 PE=1 SV=3"
2	N	XP_005257115.2	509	16	"collagen alpha-1(I) chain isoform X2 [Homo sapiens]"
3	S	ALBU_HUMAN	198	8	"Serum albumin OS=Homo sapiens OX=9606 GN=ALB PE=1 SV=2"
4	N	NP_002017.1	164	9	"fibronectin isoform 3 preproprotein [Homo sapiens]"

5	N	CAA23761.1	152	6	"unnamed protein product partial [Homo sapiens]"
6	S	PGS1_HUMAN	147	3	"Biglycan OS=Homo sapiens OX=9606 GN=BGN PE=1 SV=2"
7	S	A2MG_HUMAN	102	4	"Alpha-2-macroglobulin OS=Homo sapiens OX=9606 GN=A2M PE=1 SV=3"
8	S	IPO5_HUMAN	75	1	"Importin-5 OS=Homo sapiens OX=9606 GN=IPO5 PE=1 SV=4"
9	S	TRFE_HUMAN	74	2	"Serotransferrin OS=Homo sapiens OX=9606 GN=TF PE=1 SV=3"
10	S	TLN1_HUMAN	70	1	"Talin-1 OS=Homo sapiens OX=9606 GN=TLN1 PE=1 SV=3"
11	S	PXDN_HUMAN	62	2	"Peroxidasin homolog OS=Homo sapiens OX=9606 GN=PXDN PE=1 SV=2"
12	S	FLNA_HUMAN	58	1	"Filamin-A OS=Homo sapiens OX=9606 GN=FLNA PE=1 SV=4"
13	S	CO6A2_HUMAN	58	2	"Collagen alpha-2(VI) chain OS=Homo sapiens OX=9606 GN=COL6A2 PE=1 SV=4"
14	N	EAW68718.1	52	2	"hemopexin isoform CRA_a [Homo sapiens]"
15	S	VINC_HUMAN	42	1	"Vinculin OS=Homo sapiens OX=9606 GN=VCL PE=1 SV=4"
16	N	SJM31191.1	40	3	"Sulfotransferase [Homo sapiens]"
17	S	STPG1_HUMAN	31	1	"O(6)-methylguanine-induced apoptosis 2 OS=Homo sapiens OX=9606 GN=STPG1 PE=1 SV=1"
18	N	CAE45795.1	25	1	"hypothetical protein partial [Homo sapiens]"
19	N	AMZ80337.1	25	1	"SHLP2 [Homo sapiens]"
20	N	ADX66002.1	18	1	"immunoglobulin variable region partial [Homo sapiens]"
<b>F</b>	<b>DB</b>	<b>Accession</b>	<b>S</b>	<b>N</b> <b>M</b>	<b>S104-band 3-Description</b>
1	S	TRFE_HUMAN	649	26	"Serotransferrin OS=Homo sapiens OX=9606 GN=TF PE=1 SV=3"
2	S	ACTN1_HUMAN	355	10	"Alpha-actinin-1 OS=Homo sapiens OX=9606 GN=ACTN1 PE=1 SV=2"
3	S	LG3BP_HUMAN	315	16	"Galectin-3-binding protein OS=Homo sapiens OX=9606 GN=LGALS3BP PE=1 SV=1"
4	S	ALBU_HUMAN	205	7	"Serum albumin OS=Homo sapiens OX=9606 GN=ALB PE=1 SV=2"
5	S	HS90A_HUMAN	176	8	"Heat shock protein HSP 90-alpha OS=Homo sapiens OX=9606 GN=HSP90AA1 PE=1 SV=5"
6	N	AAH49849.1	135	3	"MYH9 protein partial [Homo sapiens]"
7	S	PLOD1_HUMAN	101	2	"Procollagen-lysine 2-oxoglutarate 5-dioxygenase 1 OS=Homo sapiens OX=9606 GN=PLOD1 PE=1 SV=2"
8	N	AAC34741.1	88	2	"semaphorin L partial [Homo sapiens]"
9	S	QSOX1_HUMAN	86	2	"Sulfhydryl oxidase 1 OS=Homo sapiens OX=9606 GN=QSOX1 PE=1 SV=3"
10	S	PGS1_HUMAN	79	1	"Biglycan OS=Homo sapiens OX=9606 GN=BGN PE=1 SV=2"

11	N	BAG36698.1	68	1	"unnamed protein product [Homo sapiens]"
12	S	PLTP_HUMAN	60	1	"Phospholipid transfer protein OS=Homo sapiens OX=9606 GN=PLTP PE=1 SV=1"
13	N	SJM31191.1	53	3	"Sulfotransferase [Homo sapiens]"
14	S	FETA_HUMAN	48	2	"Alpha-fetoprotein OS=Homo sapiens OX=9606 GN=AFP PE=1 SV=1"
15	N	CAA23761.1	43	1	"unnamed protein product partial [Homo sapiens]"
16	S	EF2_HUMAN	43	2	"Elongation factor 2 OS=Homo sapiens OX=9606 GN=EEF2 PE=1 SV=4"
17	N	BAH12513.1	39	1	"unnamed protein product [Homo sapiens]"
18	N	AAF40160.1	36	1	"immunoglobulin heavy chain variable region 194-92 partial [Homo sapiens]"
19	S	TRFL_HUMAN	33	1	"Lactotransferrin OS=Homo sapiens OX=9606 GN=LTF PE=1 SV=6"
20	N	CAD38944.1	31	1	"hypothetical protein partial [Homo sapiens]"
21	S	KMT2A_HUMAN	26	1	"Histone-lysine N-methyltransferase 2A OS=Homo sapiens OX=9606 GN=KMT2A PE=1 SV=5"
22	S	MMP2_HUMAN	22	1	"72 kDa type IV collagenase OS=Homo sapiens OX=9606 GN=MMP2 PE=1 SV=2"
23	N	XP_011507815.3	21	1	"transport and Golgi organization protein 1 homolog isoform X3 [Homo sapiens]"
<b>F</b>	<b>DB</b>	<b>Accession</b>	<b>S</b>	<b>N</b>	<b>S104-band 4-Description</b>
1	S	ALBU_HUMAN	422	21	"Serum albumin OS=Homo sapiens OX=9606 GN=ALB PE=1 SV=2"
1	N	CAA23753.1	142	13	"unnamed protein product [Homo sapiens]"
2	S	TRFE_HUMAN	113	4	"Serotransferrin OS=Homo sapiens OX=9606 GN=TF PE=1 SV=3"
3	N	SJM31191.1	63	5	"Sulfotransferase [Homo sapiens]"
4	N	AAC08449.1	56	2	"BIGH3 partial [Homo sapiens]"
5	N	CAD62334.1	50	1	"unnamed protein product partial [Homo sapiens]"
6	S	HEMO_HUMAN	41	1	"Hemopexin OS=Homo sapiens OX=9606 GN=HPX PE=1 SV=2"
7	N	CAD38944.1	40	1	"hypothetical protein partial [Homo sapiens]"
8	N	AKD42826.1	37	2	"anti-HIV-1 immunoglobulin light chain variable region partial [Homo sapiens]"
9	S	MCPH1_HUMAN	30	1	"Microcephalin OS=Homo sapiens OX=9606 GN=MCPH1 PE=1 SV=4"
10	S	MMP2_HUMAN	28	1	"72 kDa type IV collagenase OS=Homo sapiens OX=9606 GN=MMP2 PE=1 SV=2"
11	N	AAH38117.1	25	1	"LAPTM4B protein [Homo sapiens]"
12	S	CAD23_HUMAN	24	1	"Cadherin-23 OS=Homo sapiens OX=9606 GN=CDH23 PE=1 SV=2"
13	N	BAA91591.1	18	1	"unnamed protein product partial [Homo sapiens]"
14	S	LRP2_HUMAN	14	1	"Low-density lipoprotein receptor-related protein 2 OS=Homo sapiens OX=9606 GN=LRP2 PE=1 SV=3"
<b>F</b>	<b>DB</b>	<b>Accession</b>	<b>S</b>	<b>N</b>	<b>S104-band 5-Description</b>

					M
1	S	PAI1_HUMAN	678	24	"Plasminogen activator inhibitor 1 OS=Homo sapiens OX=9606 GN=SERPINE1 PE=1 SV=1"
2	N	BAG62914.1	236	9	"unnamed protein product [Homo sapiens]"
3	S	ALBU_HUMAN	209	13	"Serum albumin OS=Homo sapiens OX=9606 GN=ALB PE=1 SV=2"
4	S	VIME_HUMAN	180	8	"Vimentin OS=Homo sapiens OX=9606 GN=VIM PE=1 SV=4"
5	S	SPRC_HUMAN	119	5	"SPARC OS=Homo sapiens OX=9606 GN=SPARC PE=1 SV=1"
6	S	TRFE_HUMAN	98	5	"Serotransferrin OS=Homo sapiens OX=9606 GN=TF PE=1 SV=3"
7	N	EAW68718.1	72	2	"hemopexin isoform CRA a [Homo sapiens]"
8	S	CO6A1_HUMAN	61	1	"Collagen alpha-1(VI) chain OS=Homo sapiens OX=9606 GN=COL6A1 PE=1 SV=3"
9	S	MMP1_HUMAN	60	1	"Interstitial collagenase OS=Homo sapiens OX=9606 GN=MMP1 PE=1 SV=3"
10	S	CLC11_HUMAN	47	1	"C-type lectin domain family 11 member A OS=Homo sapiens OX=9606 GN=CLEC11A PE=1 SV=1"
11	S	FSTL1_HUMAN	43	1	"Follistatin-related protein 1 OS=Homo sapiens OX=9606 GN=FSTL1 PE=1 SV=1"
12	S	PTX3_HUMAN	39	1	"Pentraxin-related protein PTX3 OS=Homo sapiens OX=9606 GN=PTX3 PE=1 SV=3"
13	N	SJM31191.1	39	2	"Sulfotransferase [Homo sapiens]"
14	S	ANT3_HUMAN	37	1	"Antithrombin-III OS=Homo sapiens OX=9606 GN=SERPINC1 PE=1 SV=1"
15	S	ISLR_HUMAN	34	1	"Immunoglobulin superfamily containing leucine-rich repeat protein OS=Homo sapiens OX=9606 GN=ISLR PE=2 SV=1"
16	N	CAD38944.1	26	1	"hypothetical protein partial [Homo sapiens]"
17	N	AAH38117.1	25	1	"LAPTM4B protein [Homo sapiens]"
18	S	TBA1B_HUMAN	25	1	"Tubulin alpha-1B chain OS=Homo sapiens OX=9606 GN=TUBA1B PE=1 SV=1"
19	S	ZC3H6_HUMAN	18	1	"Zinc finger CCCH domain-containing protein 6 OS=Homo sapiens OX=9606 GN=ZC3H6 PE=1 SV=2"
<b>F</b>	<b>DB</b>	<b>Accession</b>	<b>S</b>	<b>N</b>	<b>M</b>
<b>S104-band 6-Description</b>					
1	N	AAA51995.1	378	11	"alpha 1 (I) chain propeptide partial [Homo sapiens]"
2	S	ALBU_HUMAN	207	10	"Serum albumin OS=Homo sapiens OX=9606 GN=ALB PE=1 SV=2"
2	N	CAA23753.1	120	9	"unnamed protein product [Homo sapiens]"
3	N	BAG36698.1	177	5	"unnamed protein product [Homo sapiens]"
4	S	LDHA_HUMAN	164	4	"L-lactate dehydrogenase A chain OS=Homo sapiens OX=9606 GN=LDHA PE=1 SV=2"
5	S	CO1A2_HUMAN	137	6	"Collagen alpha-2(I) chain OS=Homo sapiens OX=9606 GN=COL1A2 PE=1 SV=7"

6	S	APOA1_HUMAN	117	2	"Apolipoprotein A-I OS=Homo sapiens OX=9606 GN=APOA1 PE=1 SV=1"
7	S	PSA2_HUMAN	103	2	"Proteasome subunit alpha type-2 OS=Homo sapiens OX=9606 GN=PSMA2 PE=1 SV=2"
8	S	TPM4_HUMAN	98	2	"Tropomyosin alpha-4 chain OS=Homo sapiens OX=9606 GN=TPM4 PE=1 SV=3"
9	S	1433B_HUMAN	95	1	"14-3-3 protein beta/alpha OS=Homo sapiens OX=9606 GN=YWHAB PE=1 SV=3"
10	S	PSA3_HUMAN	90	1	"Proteasome subunit alpha type-3 OS=Homo sapiens OX=9606 GN=PSMA3 PE=1 SV=2"
11	N	BAG60361.1	90	1	"unnamed protein product [Homo sapiens]"
12	S	1433Z_HUMAN	88	1	"14-3-3 protein zeta/delta OS=Homo sapiens OX=9606 GN=YWHAZ PE=1 SV=1"
13	S	TIMP1_HUMAN	86	1	"Metalloproteinase inhibitor 1 OS=Homo sapiens OX=9606 GN=TIMP1 PE=1 SV=1"
14	S	LDHB_HUMAN	76	2	"L-lactate dehydrogenase B chain OS=Homo sapiens OX=9606 GN=LDHB PE=1 SV=2"
15	S	ACTBL_HUMAN	71	1	"Beta-actin-like protein 2 OS=Homo sapiens OX=9606 GN=ACTBL2 PE=1 SV=2"
16	S	IBP7_HUMAN	68	2	"Insulin-like growth factor-binding protein 7 OS=Homo sapiens OX=9606 GN=IGFBP7 PE=1 SV=1"
17	S	TRFE_HUMAN	67	2	"Serotransferrin OS=Homo sapiens OX=9606 GN=TF PE=1 SV=3"
18	S	CLIC1_HUMAN	66	1	"Chloride intracellular channel protein 1 OS=Homo sapiens OX=9606 GN=CLIC1 PE=1 SV=4"
19	S	FBN1_HUMAN	63	1	"Fibrillin-1 OS=Homo sapiens OX=9606 GN=FBN1 PE=1 SV=3"
20	S	K1C10_HUMAN	59	1	"Keratin type I cytoskeletal 10 OS=Homo sapiens OX=9606 GN=KRT10 PE=1 SV=6"
21	S	PSA7_HUMAN	56	2	"Proteasome subunit alpha type-7 OS=Homo sapiens OX=9606 GN=PSMA7 PE=1 SV=1"
22	S	G3P_HUMAN	55	1	"Glyceraldehyde-3-phosphate dehydrogenase OS=Homo sapiens OX=9606 GN=GAPDH PE=1 SV=3"
23	N	SJM31191.1	54	4	"Sulfotransferase [Homo sapiens]"
24	S	PSA4_HUMAN	46	2	"Proteasome subunit alpha type-4 OS=Homo sapiens OX=9606 GN=PSMA4 PE=1 SV=1"
25	S	TPIS_HUMAN	42	1	"Triosephosphate isomerase OS=Homo sapiens OX=9606 GN=TPI1 PE=1 SV=3"
26	S	HEMO_HUMAN	38	1	"Hemopexin OS=Homo sapiens OX=9606 GN=HPX PE=1 SV=2"
27	S	PSA1_HUMAN	34	1	"Proteasome subunit alpha type-1 OS=Homo sapiens OX=9606 GN=PSMA1 PE=1 SV=1"
28	N	CAD38944.1	33	1	"hypothetical protein partial [Homo sapiens]"
29	S	TBA1B_HUMAN	32	1	"Tubulin alpha-1B chain OS=Homo sapiens OX=9606 GN=TUBA1B PE=1 SV=1"
30	S	RLA0L_HUMAN	32	1	"60S acidic ribosomal protein P0-like OS=Homo sapiens OX=9606 GN=RPLP0P6 PE=5 SV=1"

---

31	N	1IRU_E	32	1	"Chain E Crystal Structure Of The Mammalian 20s Proteasome At 2.75 A Resolution"
32	S	IGKC_HUMA N	29	1	"Immunoglobulin kappa constant OS=Homo sapiens OX=9606 GN=IGKC PE=1 SV=2"
<sup>1</sup> 33	N	AAH21119.1	26	1	"GAPVD1 protein [Homo sapiens]"

---

<sup>1</sup> LC-MS/MS: Liquid Chromatography Mass Spectrometry.