

Supplementary Table 1. Age-adjusted (2000 U.S. standard population) incidence of colorectal cancer by Hispanic ethnicity, age (+/- 50 years), and anatomic subsite, National Program of Cancer Registries, 2001-2014

	Non-Hispanic white (n=1,466,205 cases)						Hispanic (n=118,094 cases)					
	Age 20-49 years			Age ≥50 years			Age 20-49 years			Age ≥50 years		
	Proximal	Distal	Rectal	Proximal	Distal	Rectal	Proximal	Distal	Rectal	Proximal	Distal	Rectal
2001	2.7	2.7	3.8	78.2	44.6	47.4	2.2	2.2	3.4	59.4	39.1	43.1
2002	2.8	2.6	4.0	75.8	43.0	45.7	2.4	2.1	3.2	57.0	37.9	42.0
2003	2.8	2.7	3.9	74.7	40.8	44.7	2.3	2.6	3.4	57.8	36.6	41.0
2004	2.7	2.7	4.2	72.6	39.3	43.2	2.5	2.3	3.5	58.2	36.5	40.8
2005	2.8	2.8	4.1	70.3	37.2	42.3	2.4	2.4	3.2	56.1	35.2	40.6
2006	2.8	2.9	4.3	68.4	35.4	40.0	2.6	2.4	3.3	56.5	34.3	39.1
2007	2.8	2.8	4.6	66.9	34.2	38.8	2.3	2.7	3.3	53.9	33.2	38.0
2008	2.9	3.0	4.5	65.0	32.3	37.3	2.3	2.3	3.7	51.1	32.9	38.2
2009	2.8	3.0	4.8	61.1	29.6	35.9	2.4	2.6	3.3	51.7	30.8	36.0
2010	2.8	3.1	4.6	58.2	27.4	34.2	2.3	2.5	3.5	47.7	27.9	34.7
2011	2.8	3.1	4.7	56.5	26.9	33.4	2.2	2.4	3.5	47.7	28.0	33.9
2012	2.9	3.2	4.9	54.3	25.3	32.8	2.1	2.3	3.5	44.2	25.3	31.9
2013	2.8	3.2	4.9	53.3	24.7	32.0	2.2	2.6	3.4	44.7	25.7	31.1
2014	2.9	3.4	5.1	50.9	24.2	32.0	2.1	2.5	3.5	42.5	24.1	31.5

NOTE: 99,322 and 8,634 cases missing anatomic subsite among whites and Hispanics, respectively, not included in incidence calculations.

Supplementary Table 2. Age-adjusted (2000 U.S. standard population) incidence of colorectal cancer by Hispanic ethnicity, age (+/- 50 years), and stage at diagnosis, National Program of Cancer Registries, 2001-2014

	Non-Hispanic whites (n=1,466,274 cases)						Hispanics (n=117,598)					
	Age 20-49 years			Age ≥50 years			Age 20-49 years			Age ≥50 years		
	Local	Regional	Distant	Local	Regional	Distant	Local	Regional	Distant	Local	Regional	Distant
2001	3.1	4.1	2.2	67.3	70.2	28.7	2.4	3.6	1.9	50.1	60.4	26.0
2002	3.3	4.2	2.2	66.2	67.6	27.9	2.7	3.1	2.0	49.8	57.1	25.9
2003	3.2	4.2	2.4	64.4	65.6	28.2	2.6	3.9	2.1	50.2	55.4	25.8
2004	3.6	4.0	2.5	69.3	56.8	28.3	2.8	3.6	2.1	55.4	52.6	25.8
2005	3.7	3.9	2.6	68.1	54.1	27.4	2.6	3.4	2.1	54.2	50.2	25.9
2006	3.7	4.3	2.6	64.9	51.9	26.9	2.8	3.4	2.3	53.0	48.8	27.3
2007	3.8	4.2	2.8	63.4	50.8	26.1	2.8	3.7	2.2	52.5	47.2	24.6
2008	3.8	4.3	3.0	60.9	48.6	25.8	2.8	3.5	2.3	51.7	45.7	24.7
2009	3.9	4.3	2.9	56.7	45.9	24.9	2.9	3.3	2.4	50.4	43.7	23.6
2010	3.8	4.5	3.0	52.2	44.2	24.7	3.0	3.3	2.4	45.7	40.8	23.0
2011	3.7	4.5	3.1	50.2	43.6	24.4	2.6	3.7	2.3	43.8	41.5	24.3
2012	3.9	4.8	3.2	48.4	41.9	23.7	2.7	3.3	2.4	41.6	38.3	22.4
2013	3.8	4.7	3.4	46.9	41.0	24.2	2.7	3.5	2.6	40.7	38.2	22.6
2014	4.2	5.0	3.4	45.6	40.4	23.4	2.6	3.4	2.5	39.6	37.4	22.2

NOTE: 99,253 and 9,130 cases missing stage at diagnosis among whites and Hispanics, respectively, not included in incidence calculations.

Supplementary Table 3. Age-adjusted (2000 U.S. standard population) incidence of colorectal cancer among non-Hispanic whites by sex, age (+/- 50 years), and anatomic subsite, National Program of Cancer Registries, 2001-2014

	Men						Women					
	Age 20-49 years			Age ≥50 years			Age 20-49 years			Age ≥50 years		
	Proximal	Distal	Rectal	Proximal	Distal	Rectal	Proximal	Distal	Rectal	Proximal	Distal	Rectal
2001	3.0	2.6	4.1	85.1	56.8	62.4	2.4	2.7	3.4	73.2	35.3	35.6
2002	2.9	2.5	4.4	82.6	54.6	60.0	2.6	2.7	3.6	70.8	34.1	34.4
2003	3.1	2.6	4.3	81.5	51.4	58.7	2.5	2.7	3.5	69.7	32.5	33.6
2004	3.0	2.7	4.6	78.8	49.9	56.3	2.5	2.8	3.8	67.9	31.1	32.7
2005	3.1	2.8	4.5	75.6	46.6	55.2	2.6	2.7	3.7	66.2	29.9	32.0
2006	3.0	2.9	4.8	72.5	44.1	51.7	2.6	2.8	3.9	65.2	28.3	30.4
2007	3.2	2.7	5.1	71.5	42.6	50.2	2.5	2.9	4.2	63.3	27.3	29.3
2008	3.2	3.1	5.1	68.6	40.0	48.2	2.6	3.0	4.0	62.0	26.2	28.3
2009	3.1	3.0	5.3	64.0	36.6	46.8	2.5	2.9	4.4	58.7	23.9	26.9
2010	3.0	3.2	5.1	61.5	33.6	44.1	2.5	3.1	4.1	55.5	22.2	25.9
2011	3.0	3.1	5.3	59.5	33.3	43.1	2.6	3.1	4.0	53.9	21.7	25.3
2012	3.2	3.3	5.5	56.3	31.5	42.6	2.5	3.1	4.2	52.5	20.2	24.6
2013	3.1	3.3	5.4	55.8	30.7	41.1	2.6	3.1	4.3	51.1	19.6	24.3
2014	3.2	3.5	5.6	53.3	30.3	41.3	2.7	3.3	4.7	48.9	19.0	24.1

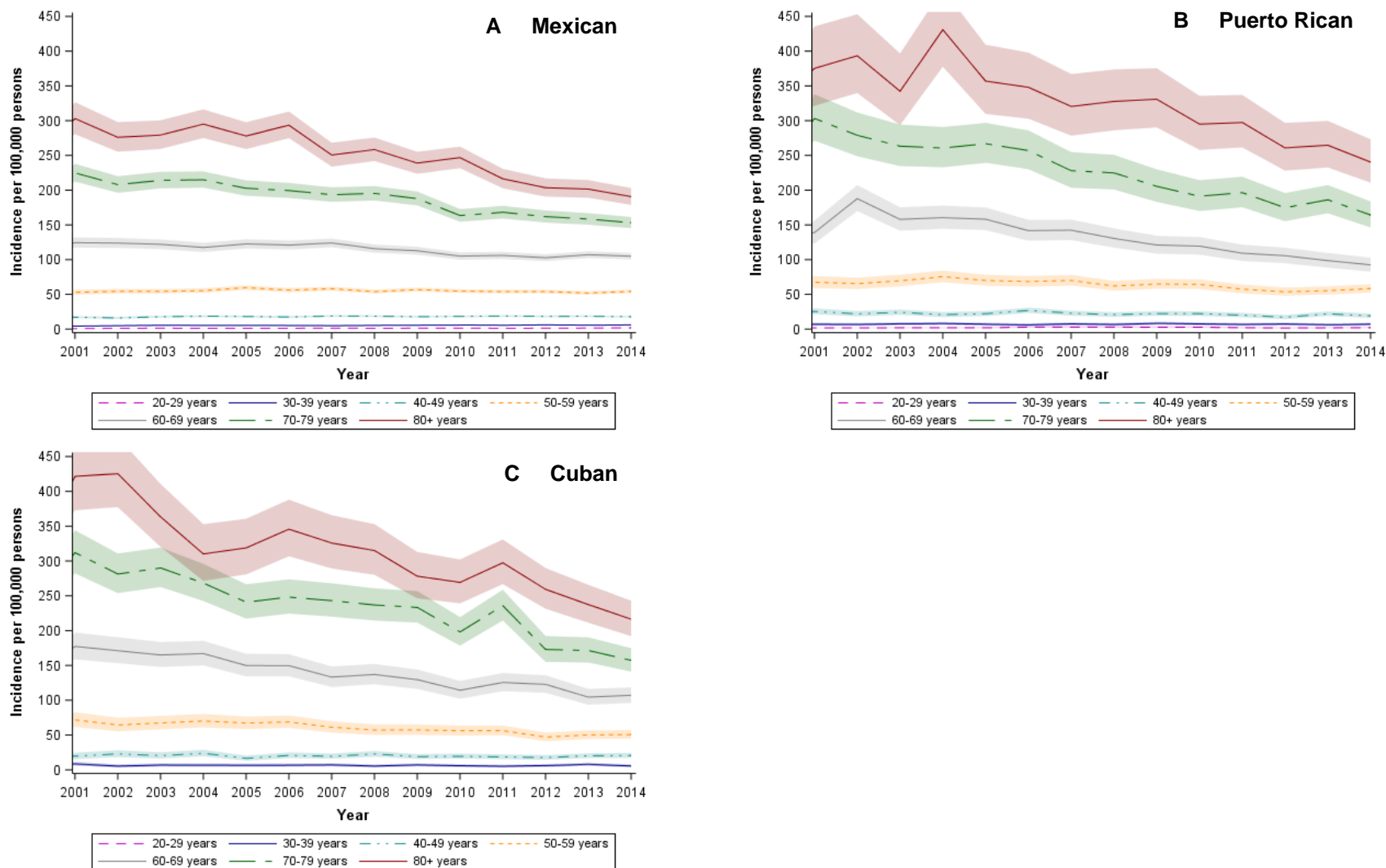
NOTE: 99,322 cases missing anatomic subsite not included in incidence calculations.

Supplementary Table 4. Age-adjusted (2000 U.S. standard population) incidence of colorectal cancer among Hispanics by sex, age (+/- 50 years), and anatomic subsite, National Program of Cancer Registries, 2001-2014

	Men						Women					
	Age 20-49 years			Age ≥50 years			Age 20-49 years			Age ≥50 years		
	Proximal	Distal	Rectal	Proximal	Distal	Rectal	Proximal	Distal	Rectal	Proximal	Distal	Rectal
2001	2.3	1.7	3.6	67.0	51.5	58.0	2.1	2.8	3.1	53.7	30.1	31.9
2002	2.4	2.0	3.6	62.4	47.5	57.1	2.3	2.1	2.7	52.7	30.6	30.6
2003	2.4	2.5	3.8	63.6	47.7	54.6	2.3	2.8	3.0	53.7	28.5	30.1
2004	2.7	2.2	3.8	64.7	48.5	56.1	2.3	2.4	3.3	53.5	27.7	29.0
2005	2.6	2.2	3.5	62.6	43.9	56.4	2.3	2.6	2.8	51.1	28.7	28.3
2006	2.8	1.9	3.7	63.5	45.5	53.4	2.4	2.9	2.9	51.6	25.9	28.2
2007	2.7	2.3	3.6	58.7	43.4	51.9	1.9	3.1	2.8	50.4	25.7	27.6
2008	2.5	2.0	4.2	58.3	46.2	51.9	2.2	2.7	3.2	45.7	22.8	27.6
2009	2.5	2.5	3.5	55.3	41.3	50.2	2.3	2.7	3.1	48.9	22.9	24.9
2010	2.6	2.3	3.8	50.9	36.7	47.5	2.0	2.7	3.1	45.1	21.3	24.7
2011	2.7	2.3	4.1	53.5	38.0	45.4	1.7	2.4	2.9	43.3	20.4	24.9
2012	2.6	2.1	3.7	48.8	33.2	43.4	1.6	2.5	3.3	40.6	19.3	22.7
2013	2.2	2.2	3.9	49.4	33.8	42.8	2.2	3.0	2.9	41.0	19.3	21.8
2014	2.3	2.3	4.0	46.5	30.5	41.7	1.8	2.7	2.9	39.4	19.0	23.2

NOTE: 9,130 cases missing anatomic subsite not included in incidence calculations.

Supplementary Figure 1. Age-specific incidence rates of colorectal cancer among Hispanics by Hispanic subgroup (Mexico, Puerto Rico, Cuba),<sup>1</sup> and 10-year age group, National Program of Cancer Registries, 2001 – 2014



<sup>1</sup>We categorized U.S. states by majority Hispanic subgroup (Mexican, Puerto Rican, Cuban, Central American, South American, Dominican) according to the 2010 U.S. Census. Data were too sparse to estimate rates among Central American, South American, and Dominican subgroups.