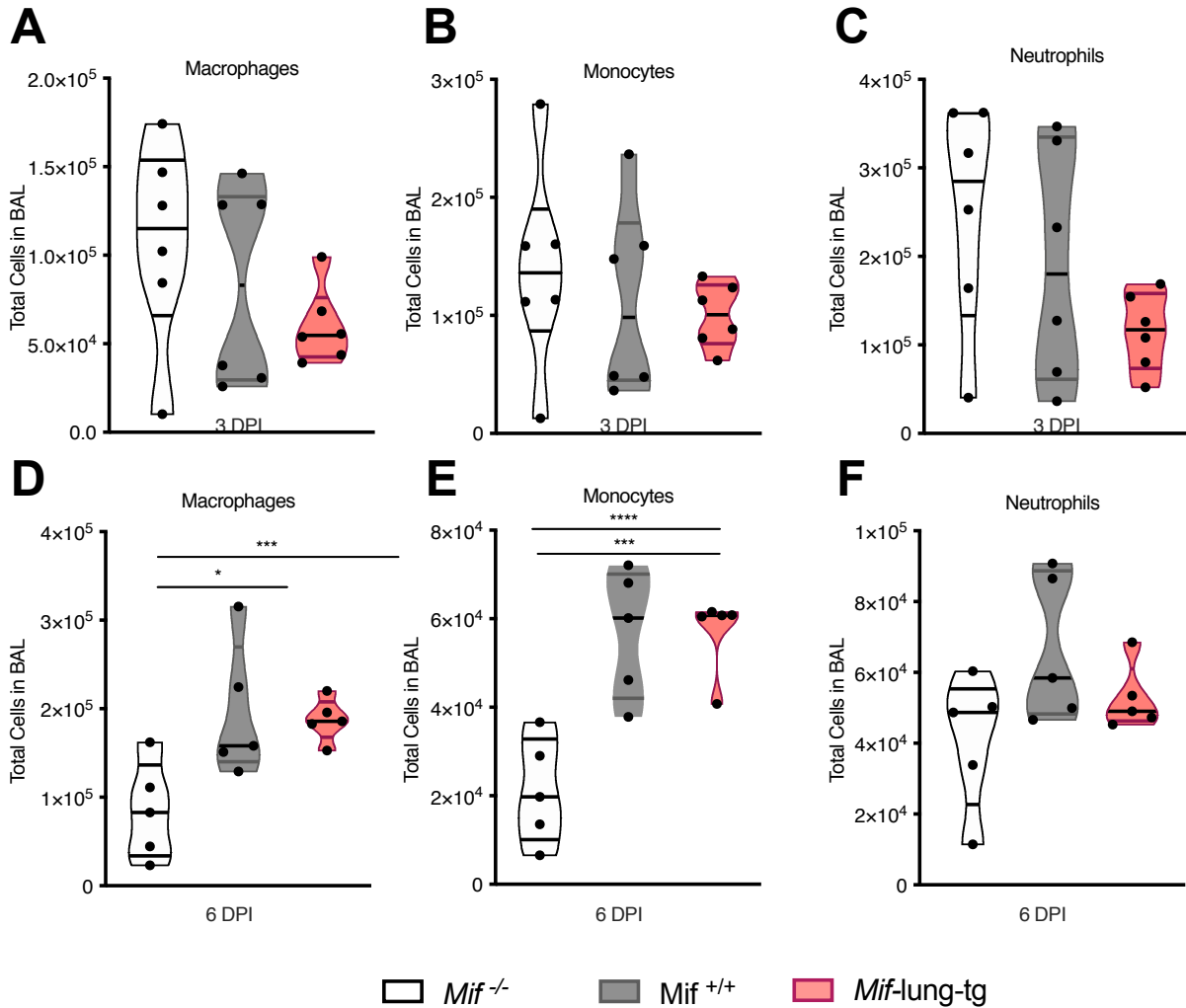
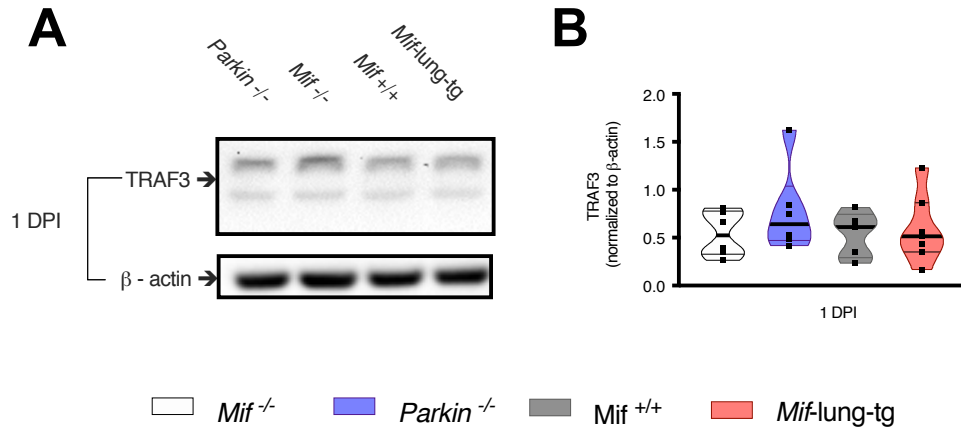


Supplemental Information (SI):

SI Figure 1: Total macrophages, monocytes and neutrophils found in the airspaces of mice at 3/6 DPI. At 3 DPI the total (A) macrophages, (B) monocytes, (C) and neutrophils in airspaces. At 6 DPI the total (D) macrophages, (E) monocytes, (F) neutrophils in airspaces. Statistical differences were determined by 2-way ANOVA followed by Tukey multiple comparisons test. The violin plots are closed curves representing data's distribution and encapsulates the median, range, and inner-quartile range with each symbol representing a biological replicate. Data are representative of samples from 2 independent experiments with n=4-6 biological replicates/group. * p < 0.05, ** p<0.01, *** p< 0.001, or **** p< 0.0001

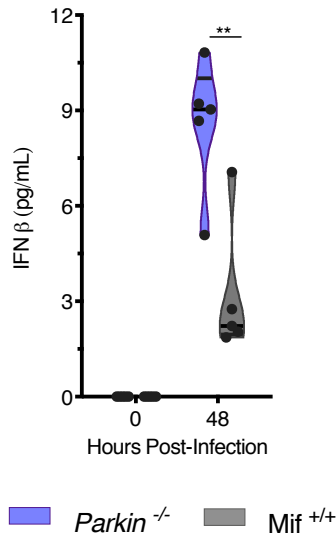


SI Figure 2: TRAF3 protein levels in lung lysate of mice at 1 DPI. Lung lysate TRAF3/ β -actin protein measured by western blot at baseline and 1 DPI: **(A)** representative image of blot and **(B)** violin plot of TRAF3 normalized to β -actin. Statistical differences were determined by 1-way ANOVA followed by Tukey multiple comparisons test (B). The violin plots are closed curves representing data's distribution and encapsulates the median, range, and inner-quartile range with each symbol representing a biological replicate (B). Data are representative of 2 independent experiments with n=4-5 biological replicates/group (B).



SI Figure 3: IFN- β levels in cell culture media of AECs. Measurements from AECs 48 h after PR8 IAV MOI 1 infection or mock-infection: **(A)** violin plot of IFN- β released from AECs. Statistical differences were determined by unpaired two-tailed Student *t* test (A). The violin plots are closed curves representing data's distribution and encapsulates the median, range, and inner-quartile range with each symbol representing a biological replicate (A-C). Data representative of pooled data with n=4 biological replicates/group (A). * $p < 0.05$, ** $p < 0.01$

A



SI Figure 4: MIF release into Calu-3 cell culture media, IFN- λ , and parkin pre- and post-infection. Measurements from Calu-3 at 24 h after PR8 IAV MOI 1 infection or mock-infection. **(A)** MIF released from Calu-3 cells, **(B)** IFN- λ 3 western blot representative image, and **(C)** parkin representative image. Statistical differences were determined by unpaired two-tailed Student *t* test (A). The violin plots are closed curves representing data's distribution and encapsulates the median, range, and inner-quartile range with each symbol representing a biological replicate (A). Data representative of pooled data with n=4 -6 biological replicates/group (A). * $p < 0.05$, ** $p < 0.01$

