

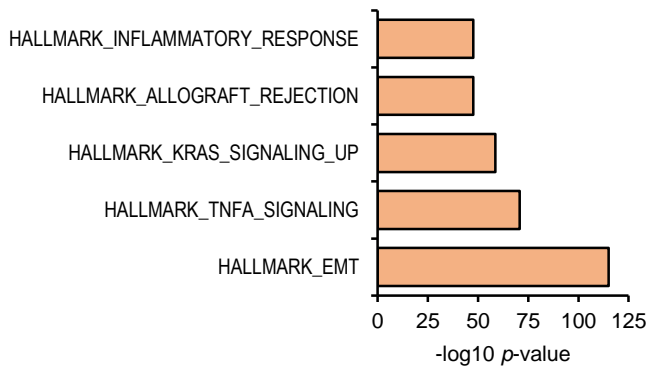
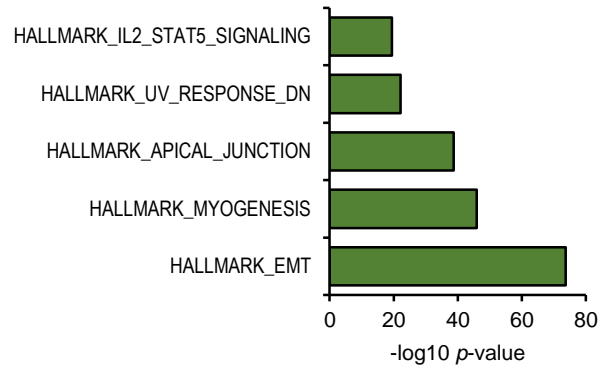
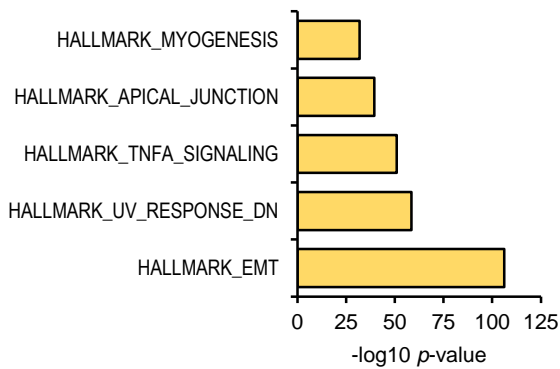
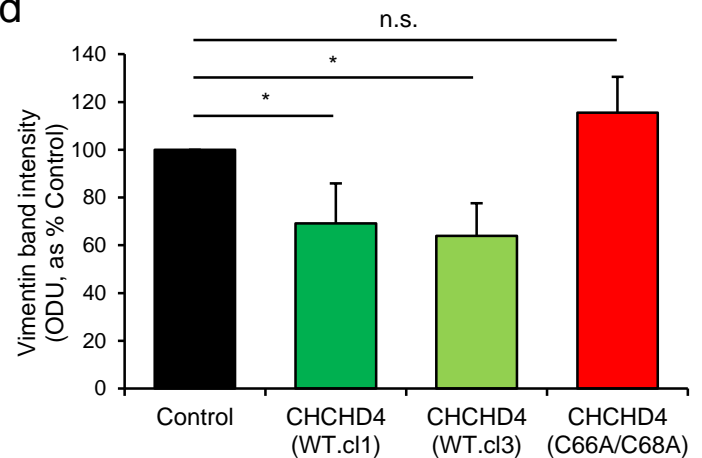
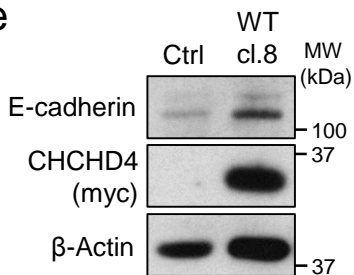
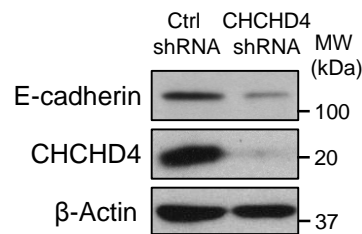
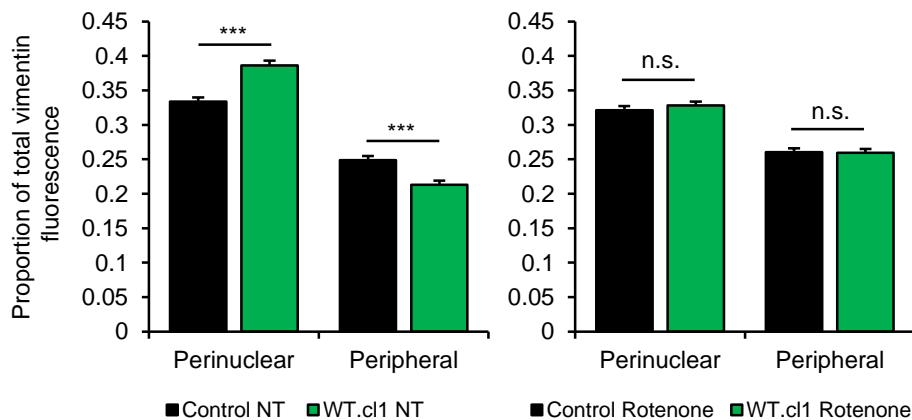
a**Breast Cancer (METABRIC)****b****Colon Adenocarcinoma (COAD)****c****Cell Line Encyclopedia (Novartis/Broad)****d****e****f****g**

Figure S5. CHCHD4 regulates the EMT phenotype of tumour cells. **a-b** Charts show GSEA of genes negatively correlated with *CHCHD4* expression in **(a)** breast cancer and **(b)** colon adenocarcinoma patient tumours. **c** Chart shows GSEA of genes negatively correlated with *CHCHD4* expression in Novartis/Broad Institute Cell Line Encyclopedia. $n = 967$ cell lines. **d** Chart shows densitometry analysis of vimentin band intensity from 3 independent western blots as described in Fig. 5c. \pm SD. $n = 3$. **e** Western blots show levels of E-cadherin and myc-tagged CHCHD4 in control (Ctrl) HCT116 cells, and cells overexpressing wild-type CHCHD4 (WT.c18). β -Actin was used as a load control. **f** Western blots show levels of E-cadherin and CHCHD4 in HCT116 cells stably expressing control (Ctrl) shRNA or shRNA targeting CHCHD4 (CHCHD4 shRNA). β -Actin was used as a load control. **g** Chart shows relative proportion of fluorescently labelled vimentin in the perinuclear and peripheral sections of control U2OS cells and cells overexpressing wild-type CHCHD4 (WT.c11) untreated (NT) or treated with 50 nM rotenone for 72 h. \pm SD. $n = 2$ experiments, 5 fields of view per condition.