

P2X7-mediated ATP secretion is accompanied by depletion of cytosolic ATP

Purinergic Signalling

Johnsen B, Kaschubowski KE, Nader S, Schneider E, Nicola JA, Fliegert R, Wolf IMA, Guse AH, Nikolaev VO, Koch-Nolte F, Haag F.

Corresponding author:

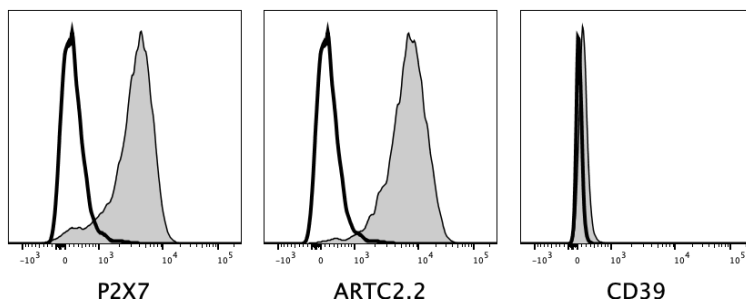
Prof. Dr. Friedrich Haag

Institute of Immunology

University Medical Center Hamburg-Eppendorf

haag@uke.de

Online Resource 1 Surface expression of P2X7, ARTC2.2, and CD39 on Yac-1 cells. Yac-1 cells were stained with antibodies against the indicated antigens or left unstained and subjected to flow cytometry. Histograms compare stained (grey) and unstained (white) samples.



Online Resource 2 Cell numbers and content of intra- and extracellular ATP recovered from untreated or NAD⁺-treated Yac-1 cells. Yac-1 cells were incubated with or without NAD⁺ for 3 h, and the amounts of ATP present in the cell pellets and the supernatants were measured by the luciferase/luciferin method. The total cell number and the number of living cells were determined by flow cytometry using counting beads as described in Materials and Methods. The Table contains the quantitative values of the measurements shown graphically in Figure 2.

	untreated		NAD ⁺	
	mean	SD	mean	SD
total cells	393744	32397	320647	18690
live cells	381189	31272	292523	17729
dead cells	12556	1993	28124	3088
% dead cells	3.19	0.39	8.78	0.89
total iATP (pmol)	532.9	21.9	268.3	6.9
total eATP (pmol)	0.47	0.18	24.9	2.32
eATP/cell (amol)	1.19	0.43	77.69	8.40
eATP/dead cell (amol)	36.4	9.24	890	82.9
iATP/cell (amol)	1361	124	838	36
iATP/living cell (amol)	1406	127	919	42