

Figure 1: The expression patterns for the $G = 2$ model for the cranberry bean RNA-seq dataset clustered using mixtures of `MBCluster.Seq,NB.` in T_1 .

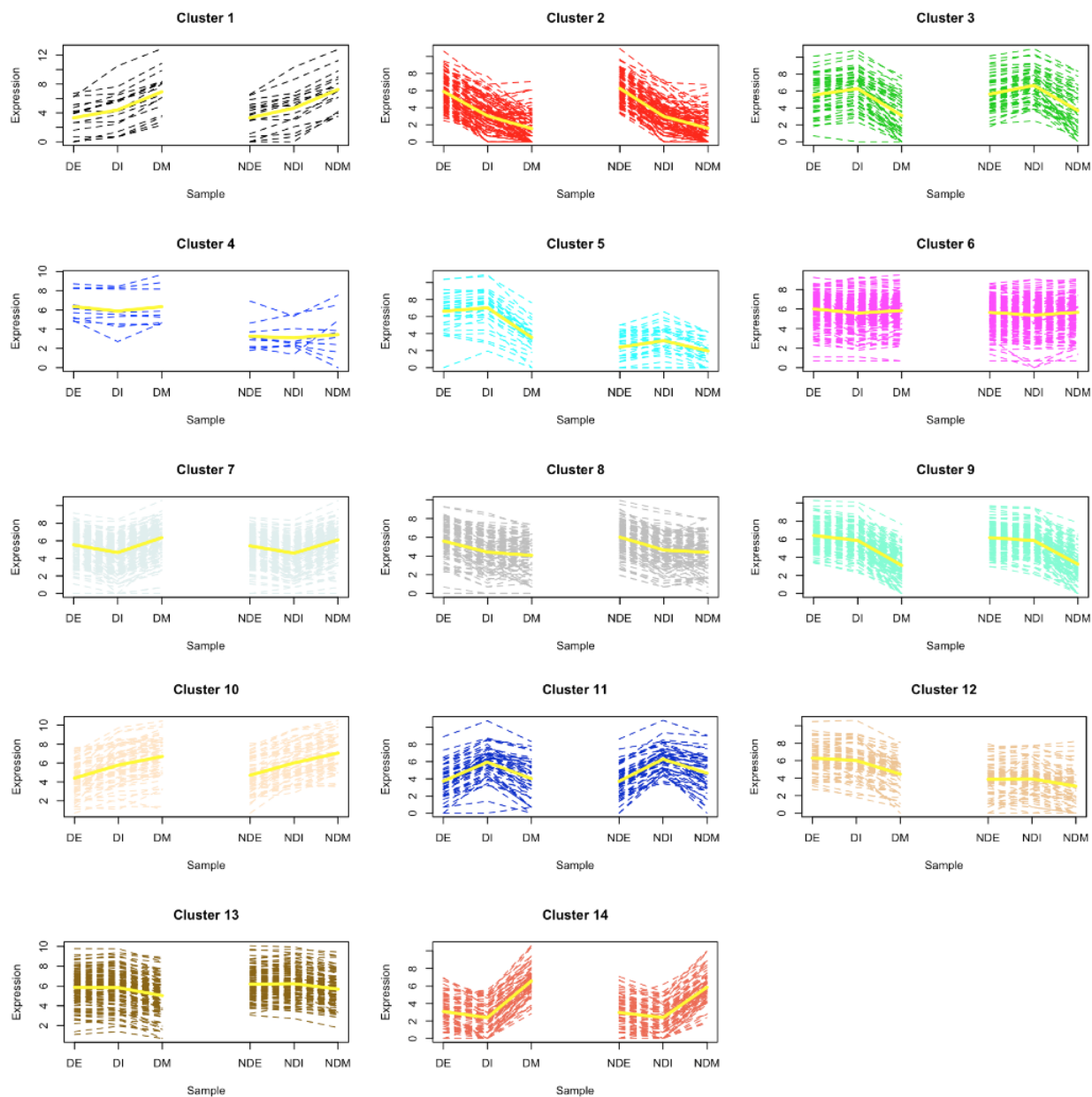


Figure 2: The expression patterns for the $G = 14$ model for the cranberry bean RNA-seq dataset clustered using mixtures of `MBCluster.Seq,Poisson` in T_2 .