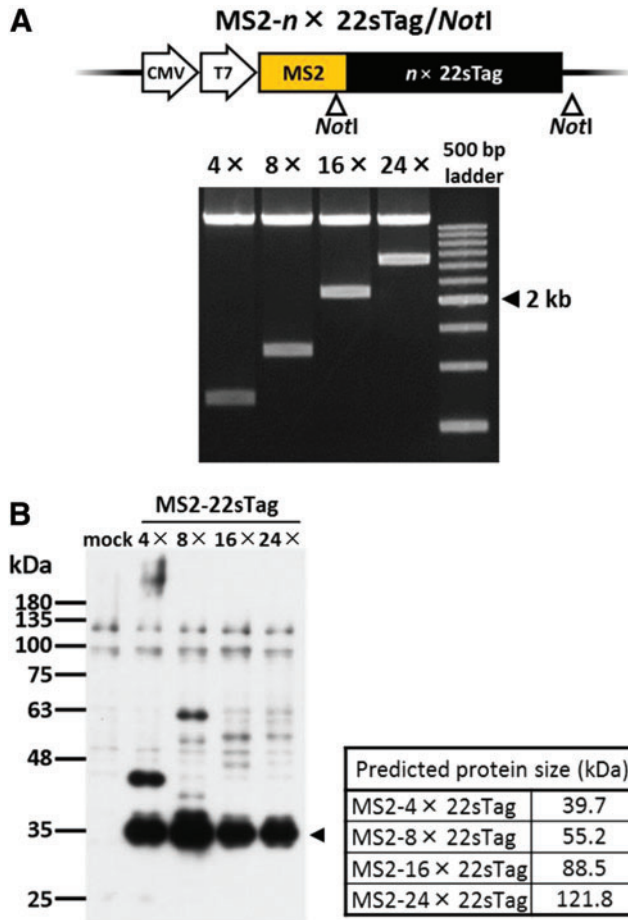


## Supplementary Data



**SUPPLEMENTARY FIG. S1.** Validation of MS2-22sTag constructs. **(A)** Validation of MS2-22sTag vectors by restriction digestion. A gel image of MS2- $n \times$  22sTag vector digested with *NotI* is shown. The band pattern suggested successful construction of the vectors. **(B)** Western blotting analysis of MS2- $n \times$  22sTag proteins expressed in HEK293T cells. 10  $\mu$ g each of cell lysate was loaded and the corresponding protein was detected with anti-HA antibody. Predicted protein sizes are shown at the right table. A filled triangle indicates the bands of truncated proteins, possibly containing MS2 coat protein and partial GCN4 tag arrays.