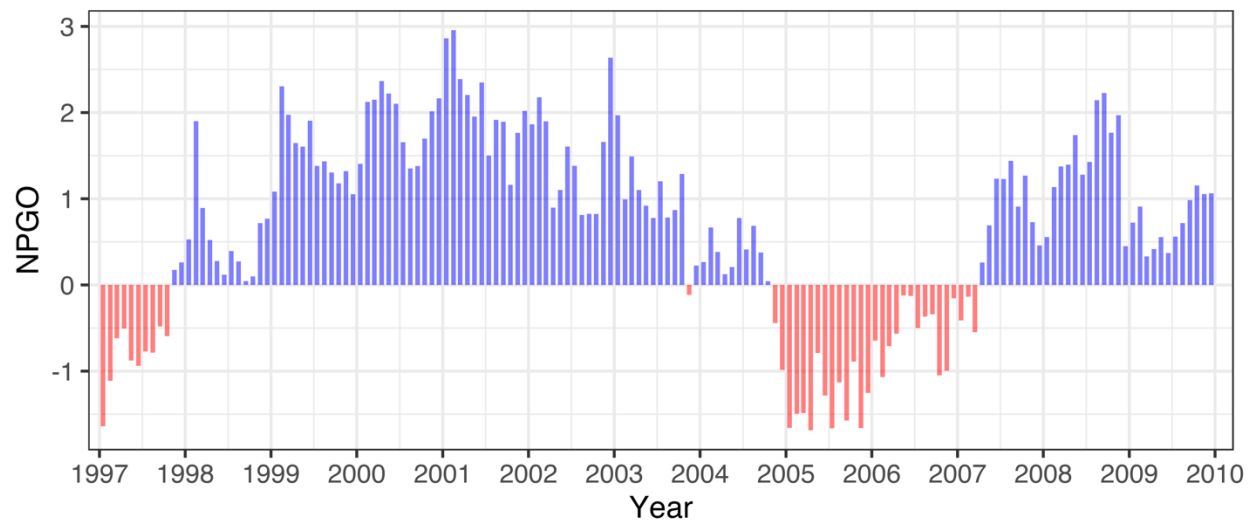


### North Pacific Gyre Oscillation Index, 1997-2009



Source: <http://www.o3d.org/npgo/>

**Additional file 1: Figure S1.** Monthly values of the North Pacific Gyre Oscillation (NPGO) index for the period 1997-2009. Positive NPGO values (cool and highly productive conditions) were prevalent in most years of the study period (1998-2004 and 2007-2008), while two years (2005 and 2006) were characterized by negative NPGO values (warm conditions with reduced biological productivity).