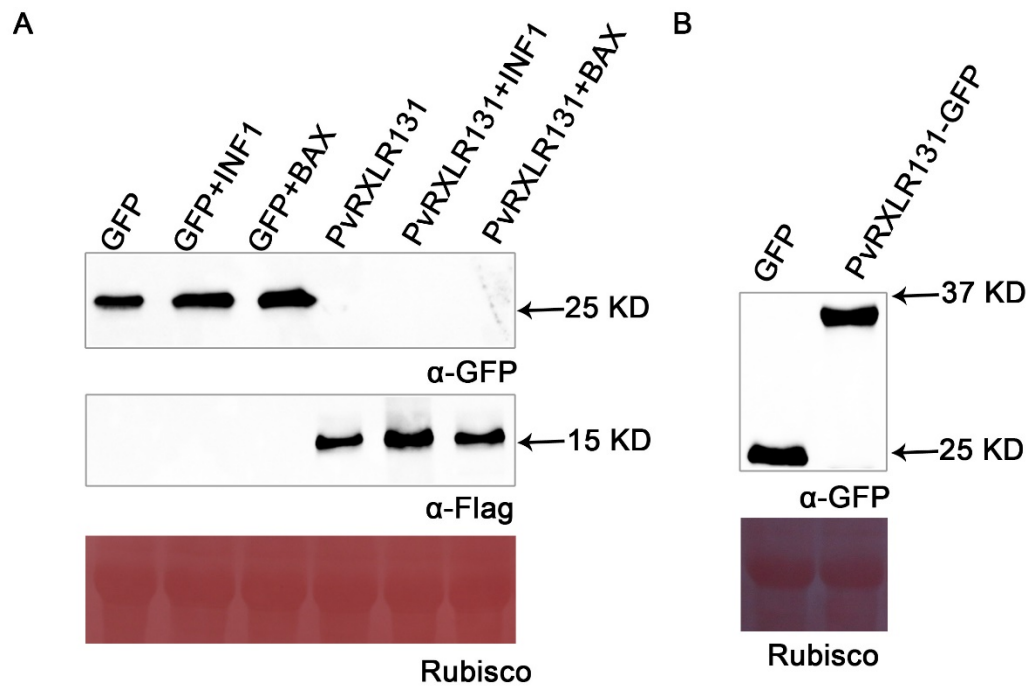


FIGURE S6



S6 Fig. Detection of protein expression. (A) Immunoblot analysis of proteins from *Nicotiana benthamiana* leaves transiently expressing GFP and PvrXLR131-Flag from the pGR106 vector. (B) Immunoblot analysis of proteins from *N. benthamiana* leaves transiently expressing GFP and PvrXLR131-GFP from the pBI121 vector. Ponceau-S (PS) stained rubisco large subunit serves as a loading control.