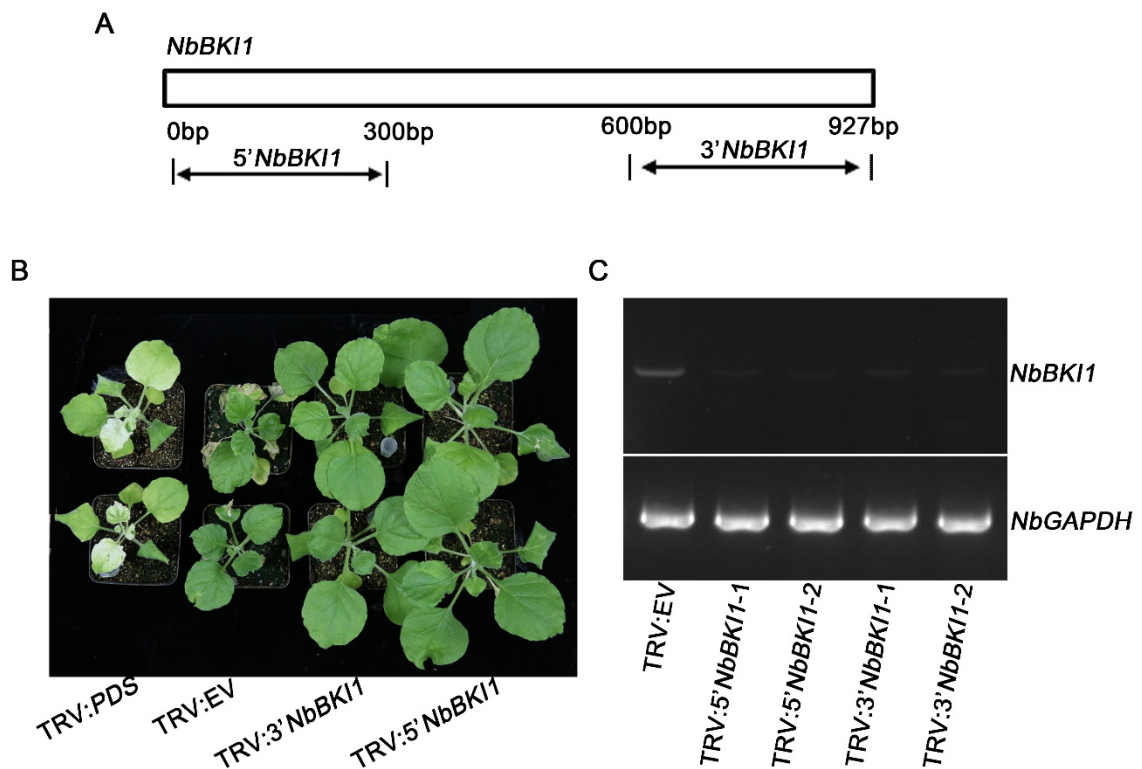


FIGURE S10



S10 Fig. Silencing of *NbBKII* in *Nicotiana benthamiana*. (A) VIGS constructs of *NbBKII*. ~300bp fragment of 5'- and 3'- *NbBKII* were introduced into pTRV2 vector and used for *NbBKII* silencing. (B) *NbBKII*-silenced plants showed significantly larger size compared with TRV:EV and TRV:*PDS* controls. (C) *NbBKII* silencing was detected by semi-quantitative RT-PCR. Both of the 5'- and 3'-*NbBKII* silencing constructs resulted in reduction of expression level of *NbBKII* gene. *GAPDH* gene was used as an endogenous reference gene.