

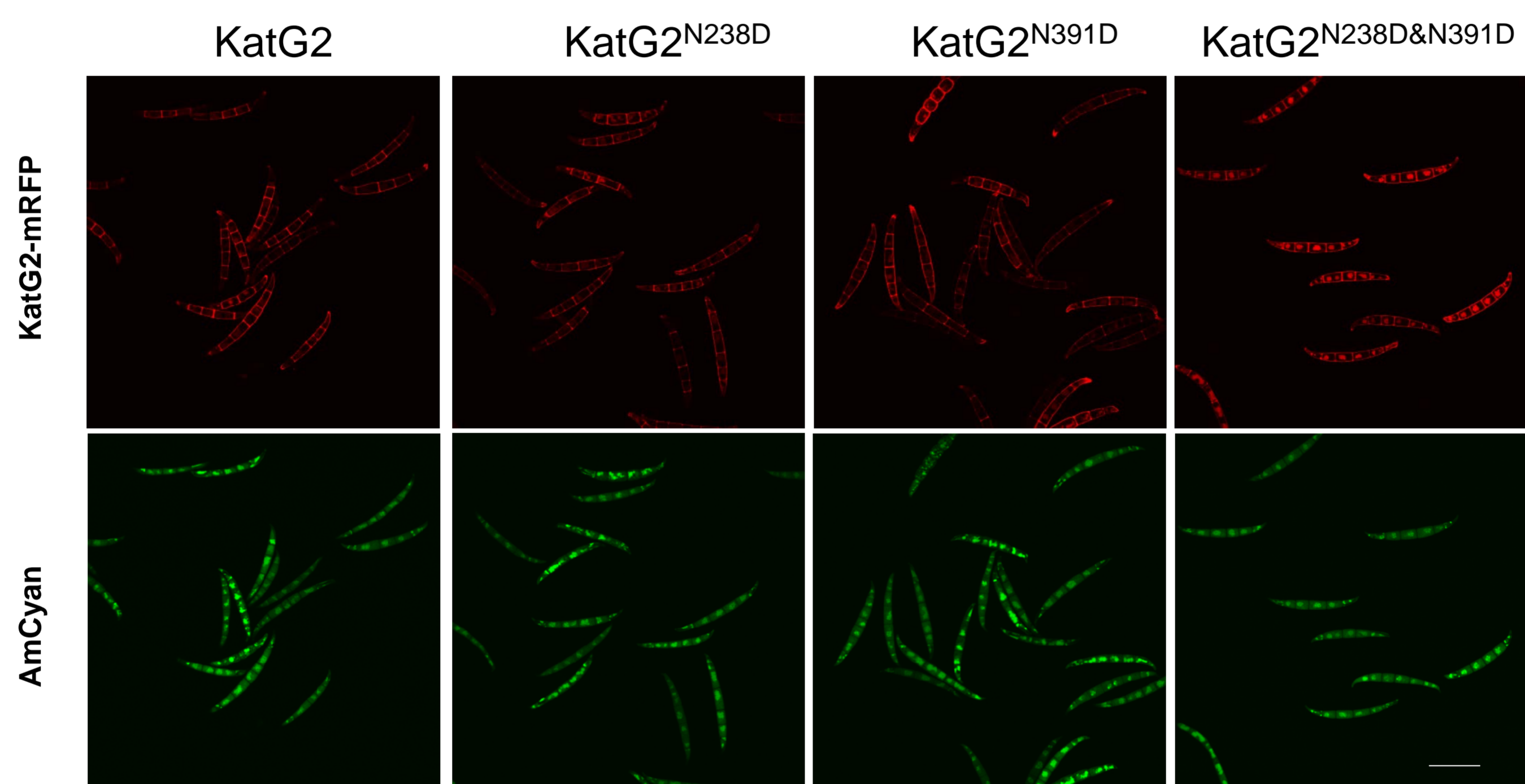
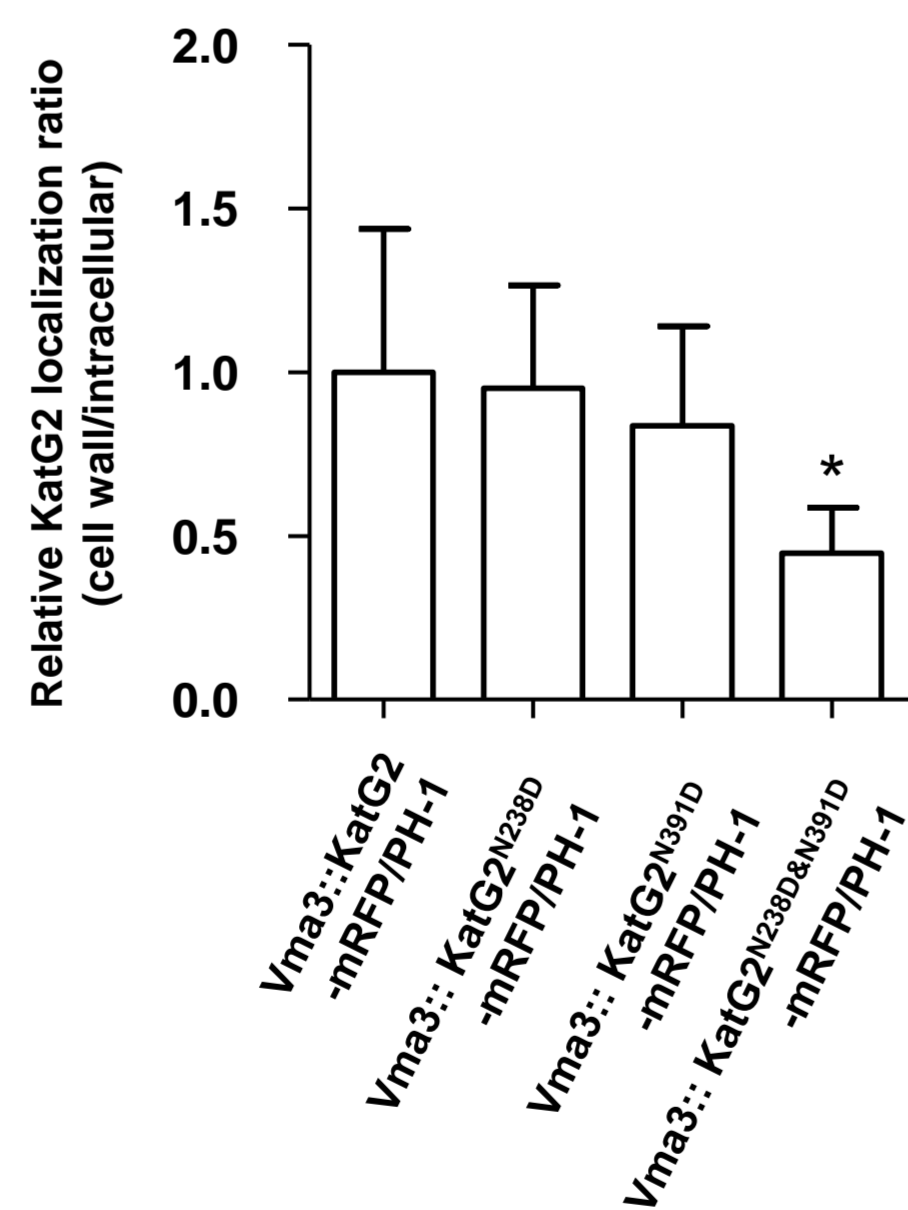
A**B**

Fig. S9 Asparagine residues at positions 238 and 391 of KatG2 regulate the cell wall distribution of KatG2. (A) KatG2-mRFP localization in conidia with or without mutation of N-glycosylation sites. To analyze the localization of KatG2 in conidia, the mutation sites were introduced to the plasmid in Fig. 4B, which was then transformed into PH-1 protoplasts. Bar=30 μ m. (B) Statistical analysis of KatG2 localization using AmCyan as a reference. Error bars indicate standard deviation, the experiment was repeated three times, and asterisks indicate significant differences (Student's *t*-test $P < 0.05$).