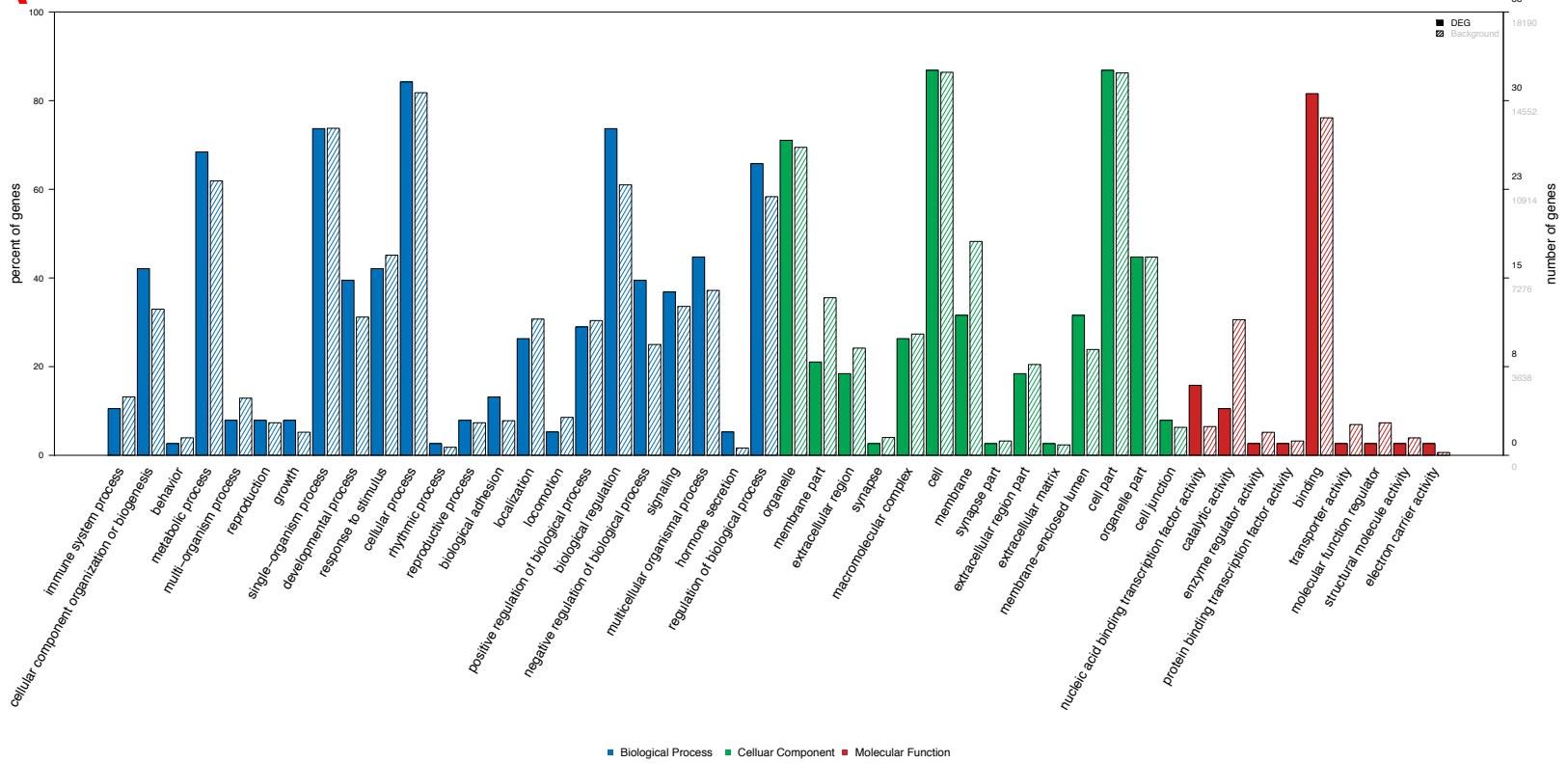


Supp Figure 1

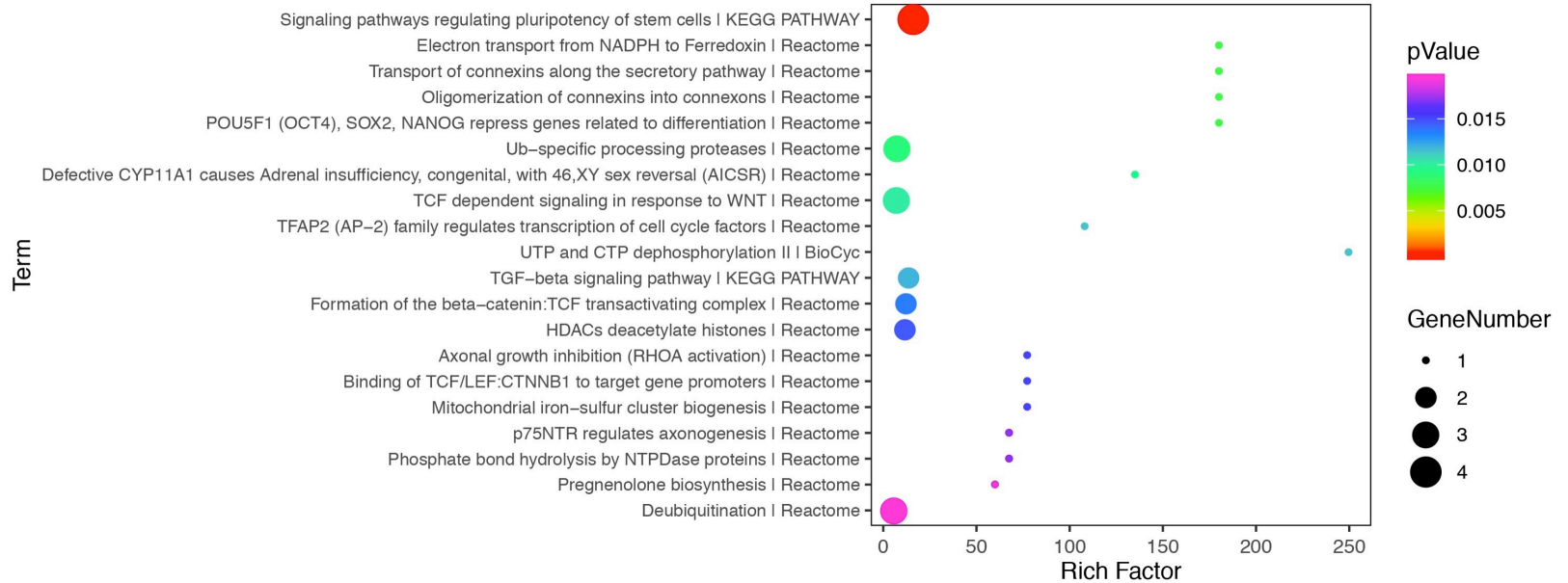
A

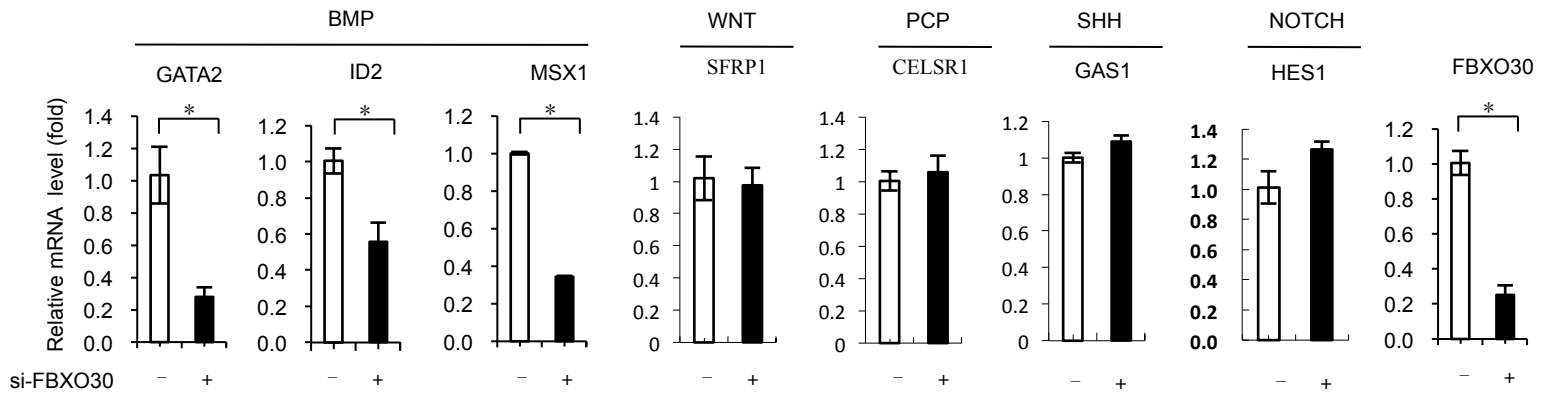
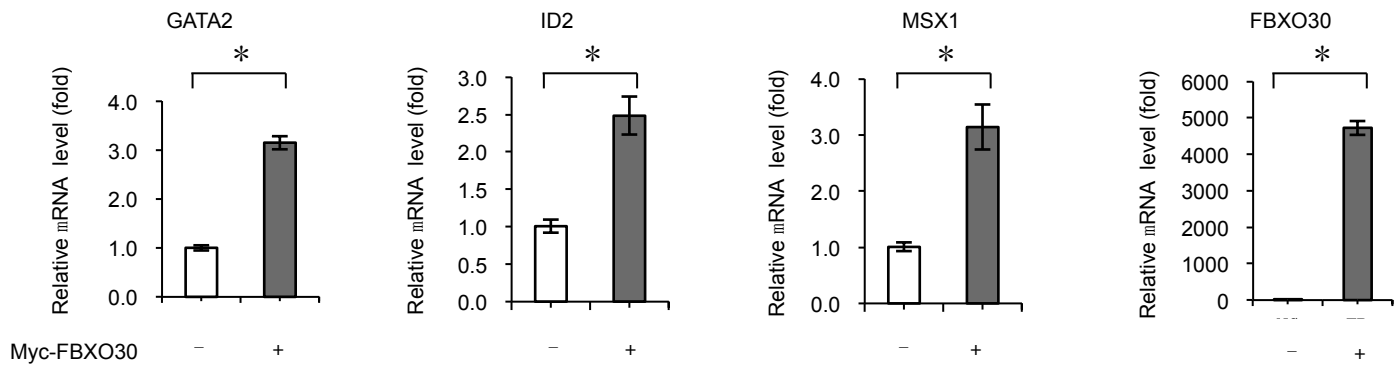
GO-Standard



B

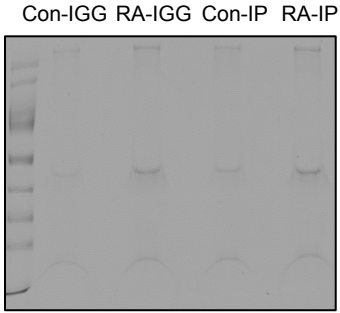
Statistics of Pathway Enrichment



C**D**

Supp Figure 2

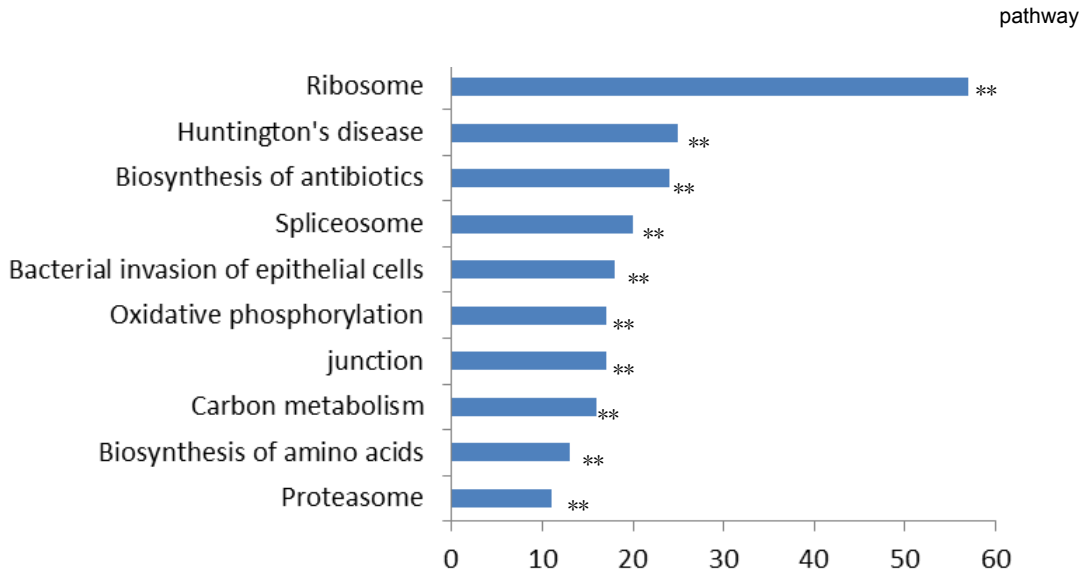
A



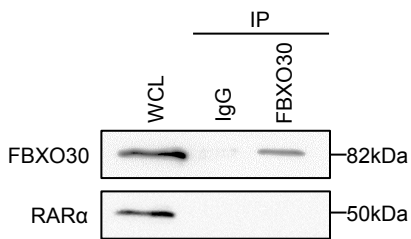
B

UniProtKB AC/ID	gene symbol	LFQ intensity IP
Q8BJL1	FBXO30	1133200

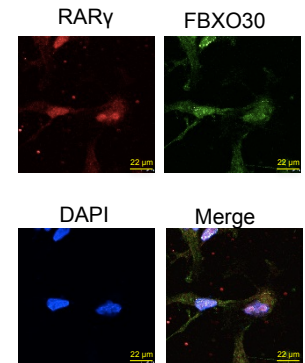
C



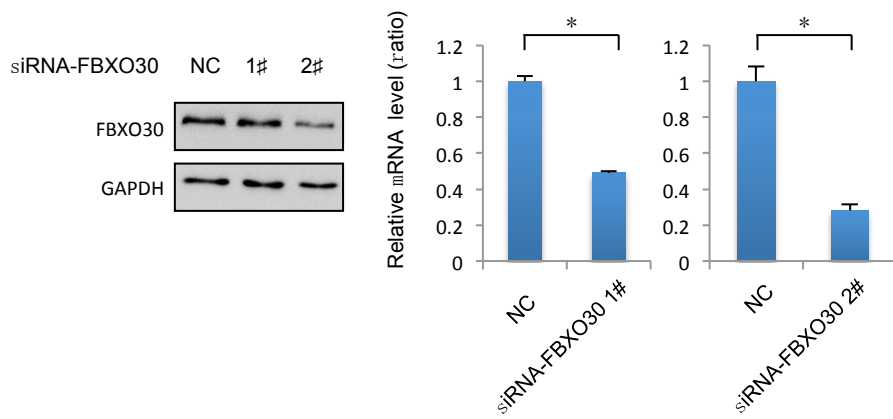
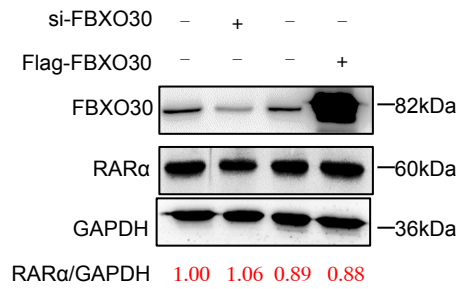
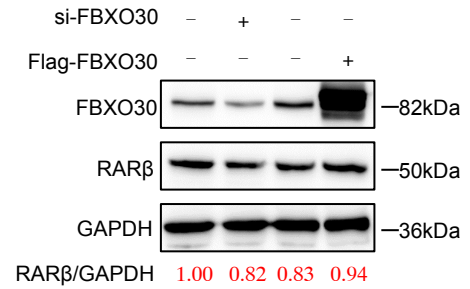
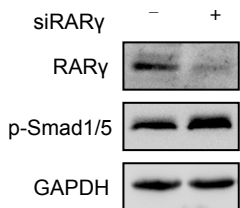
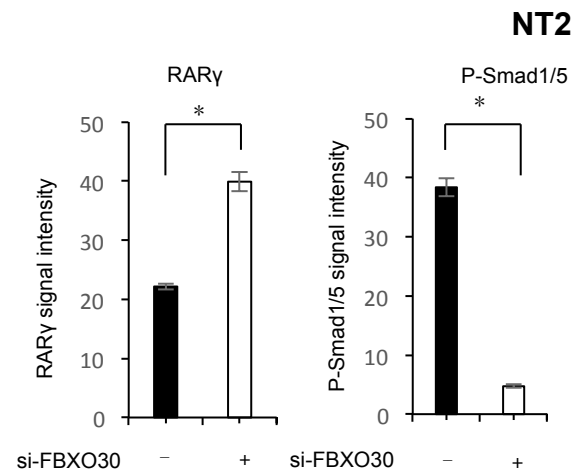
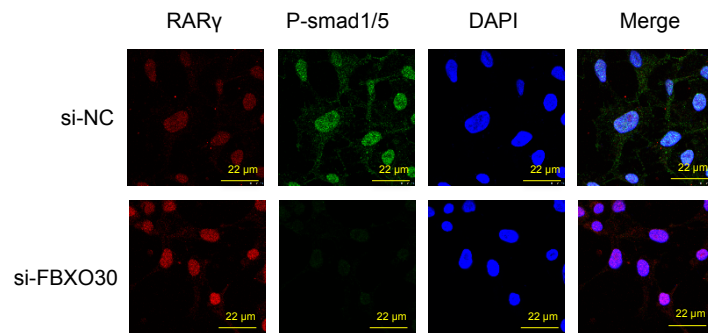
D



E

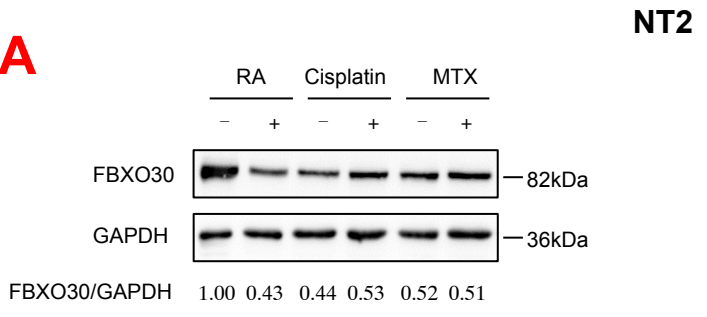


NT2

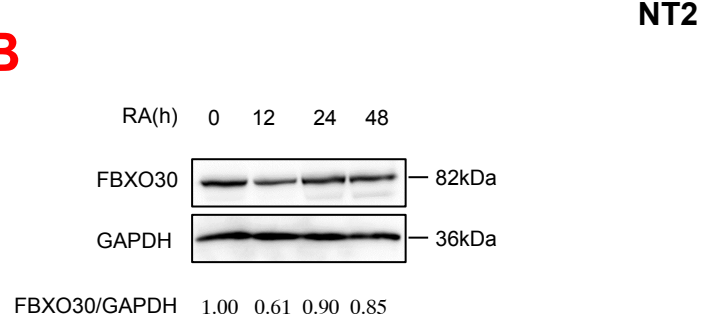
F**G****H****Supp Figure 3****A****B**

Supp Figure 4

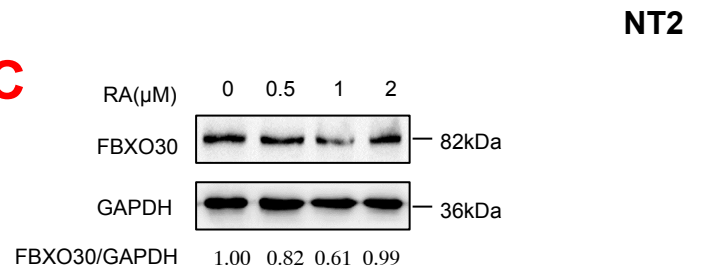
A



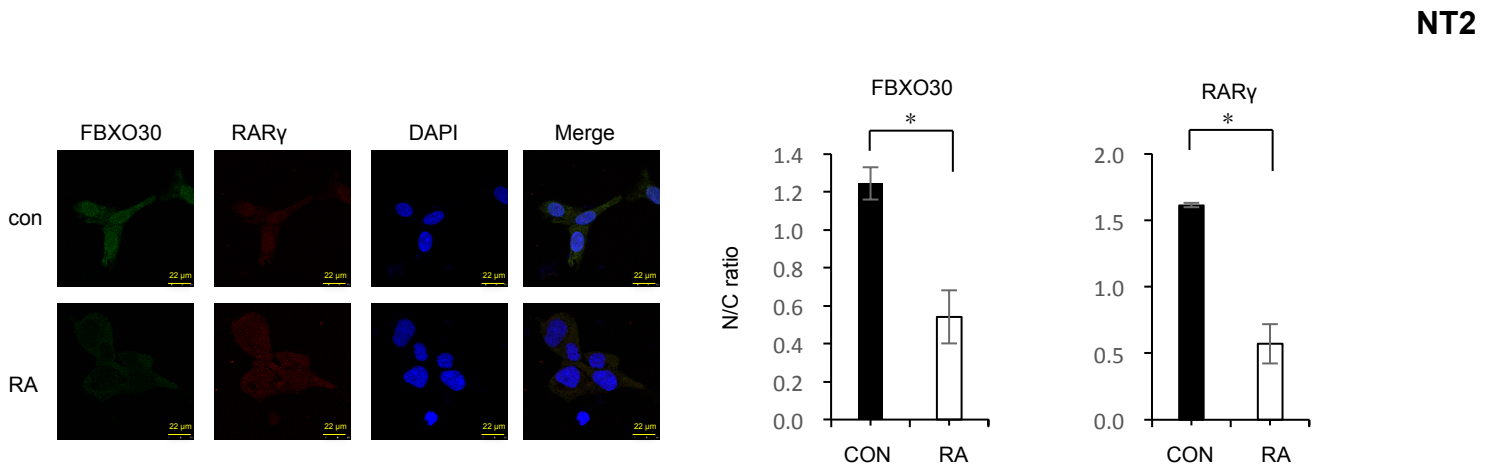
B



C

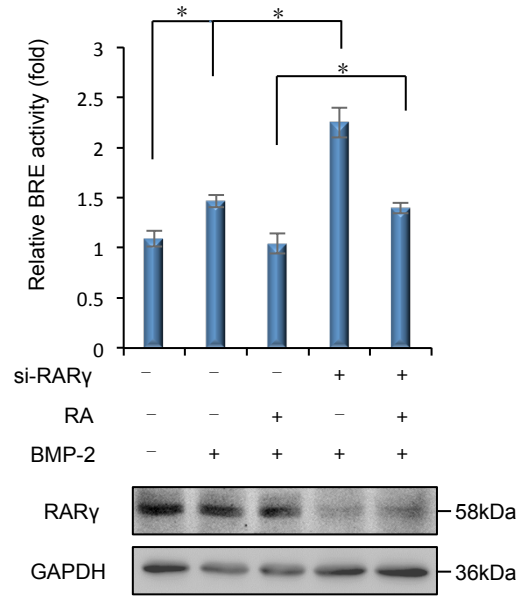


D

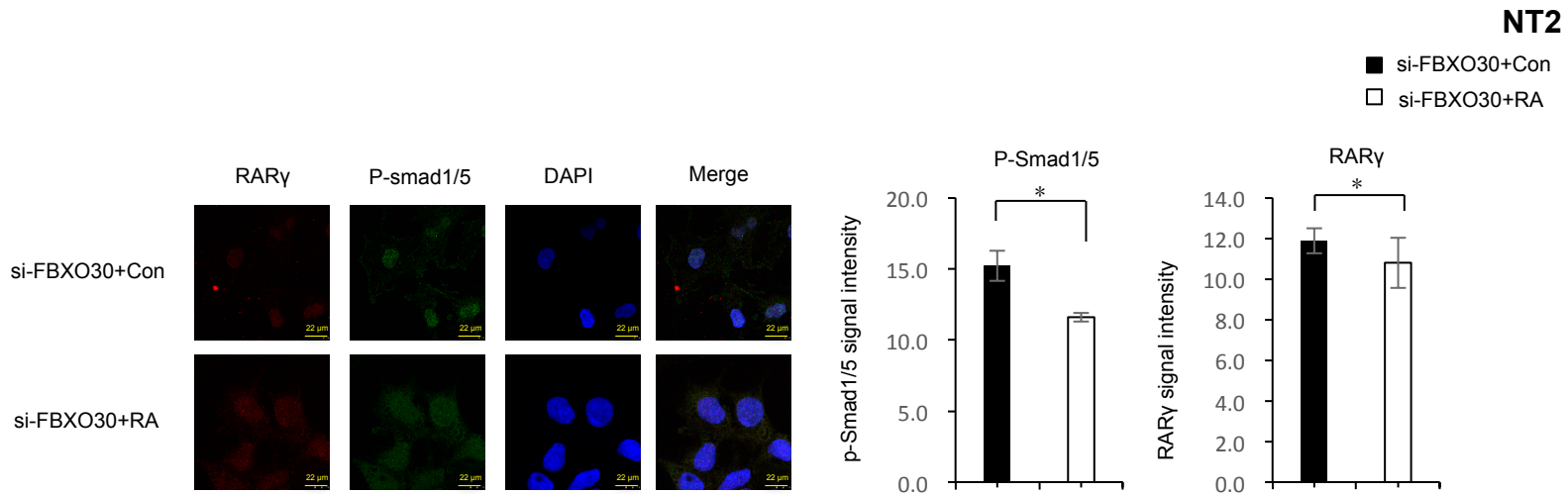


Supp Figure 5

A

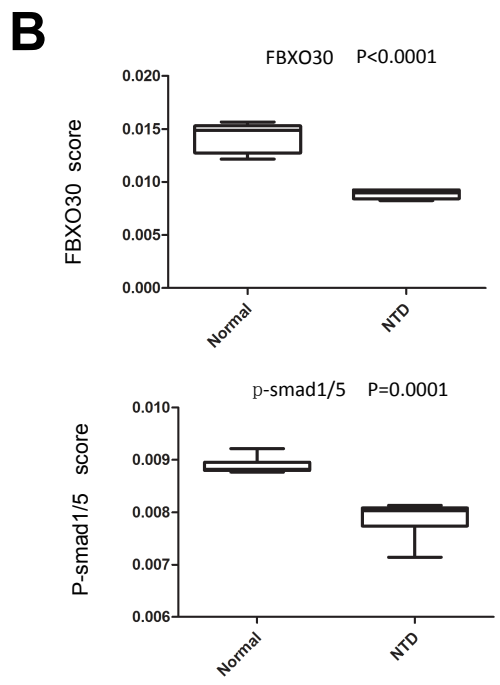
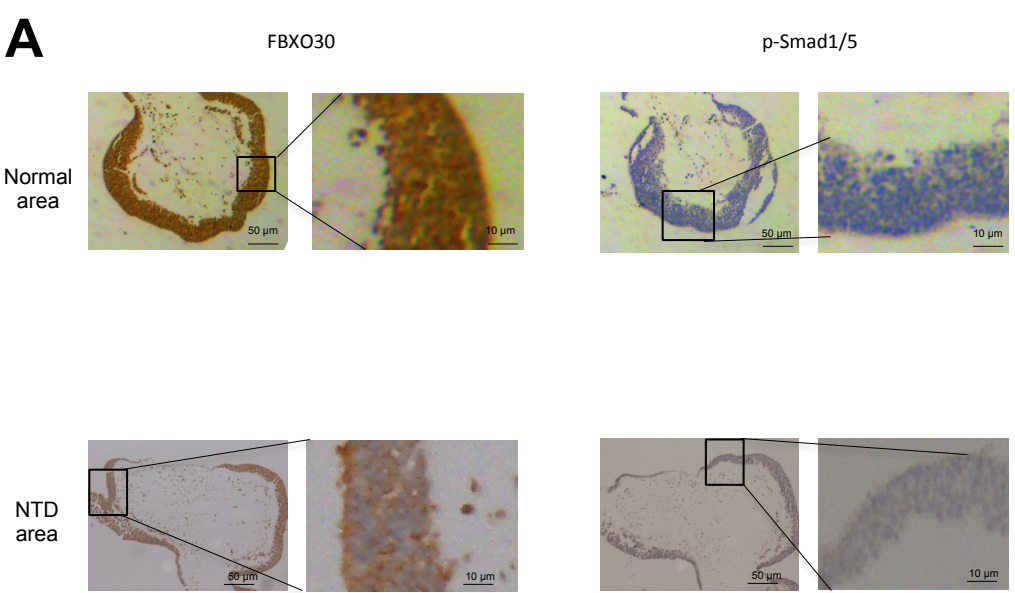


B



Supp Figure 6

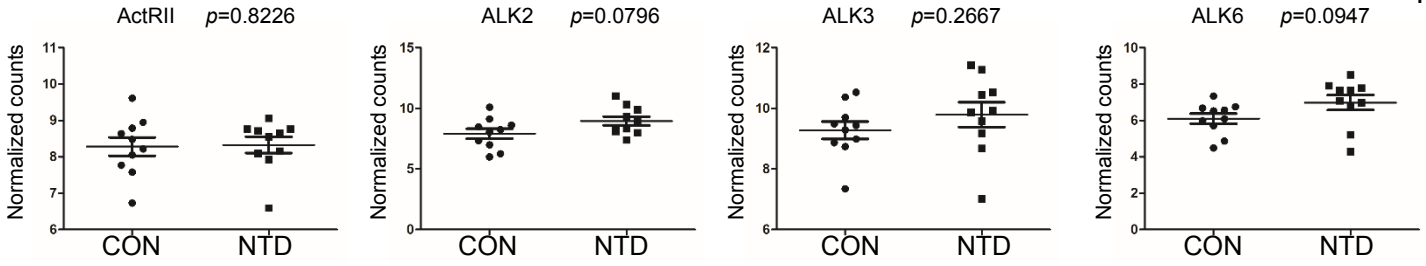
E10.5



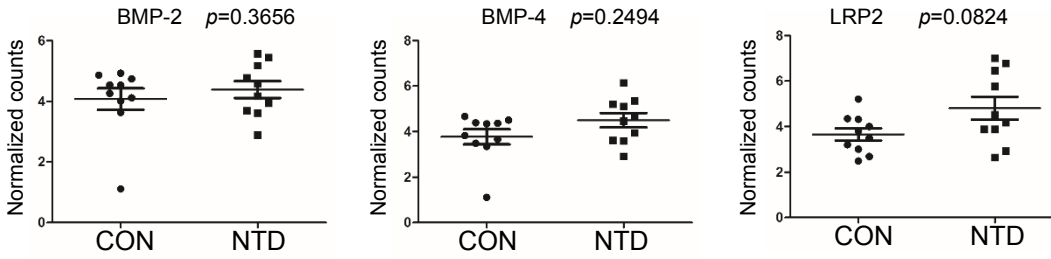
Supp Figure 7

n=10

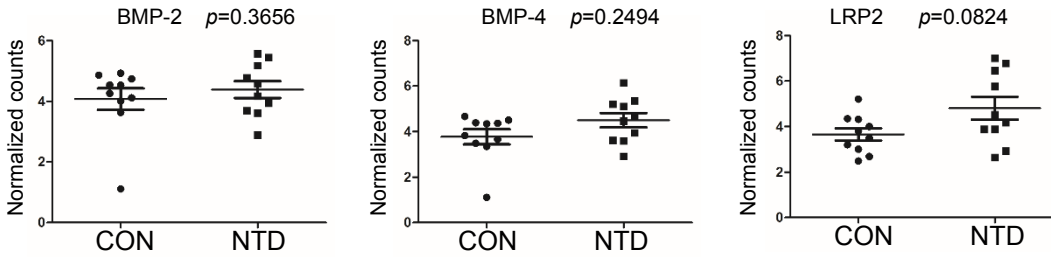
BMP receptors



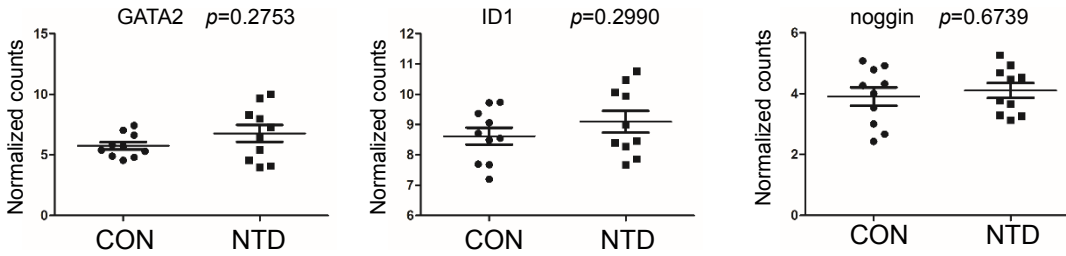
BMP ligands



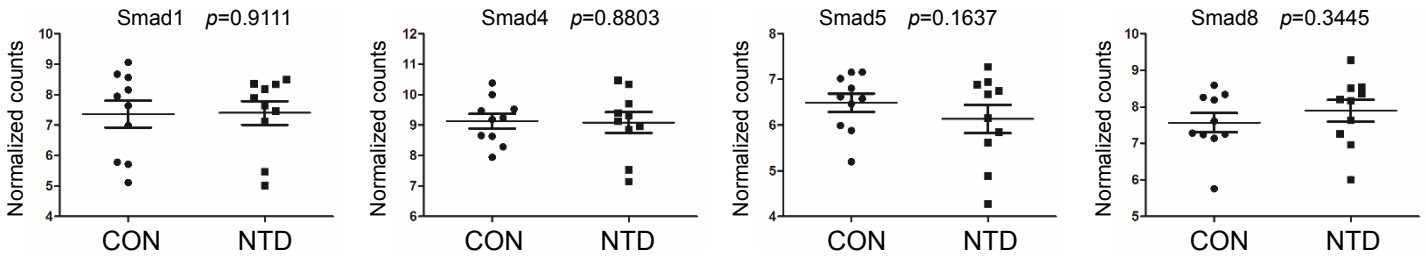
BMP inhibitors



BMP target genes



Smad family



Scan blot Supp Figure 8

Figure 2

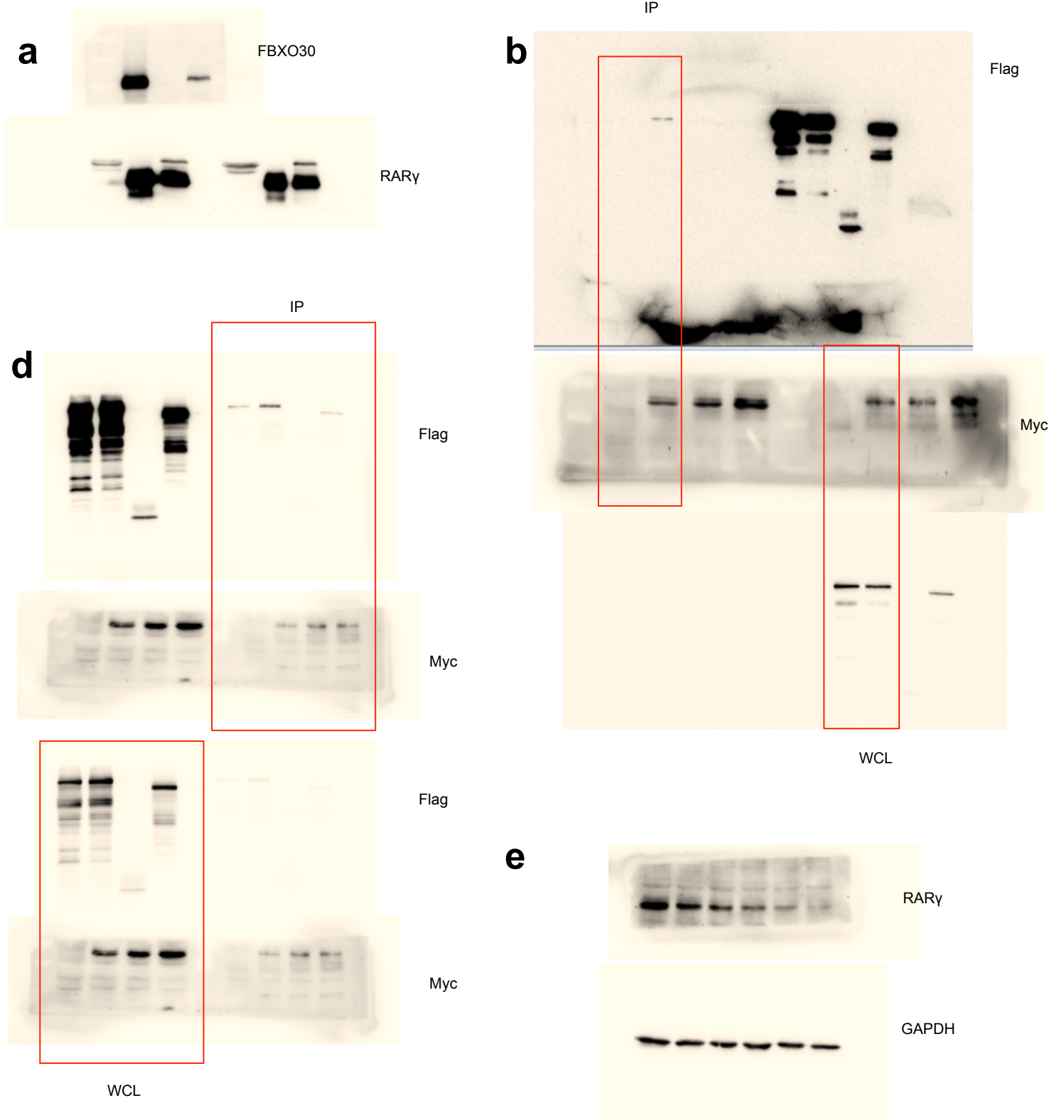


Figure 2

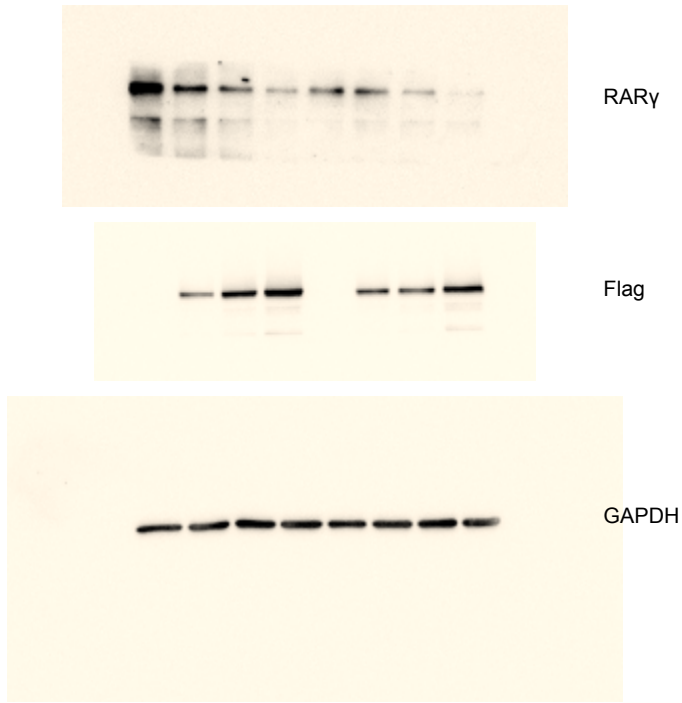
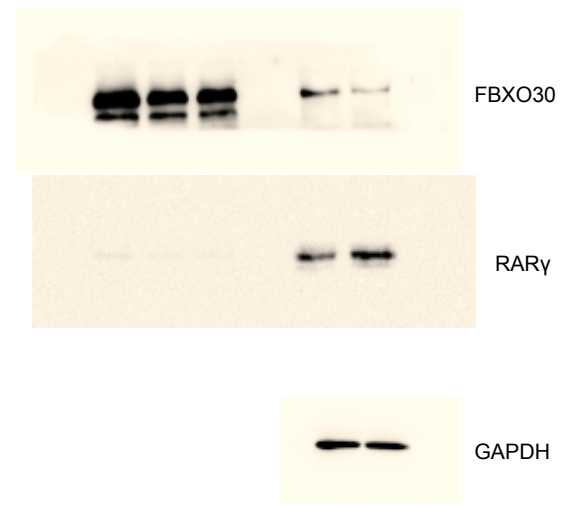
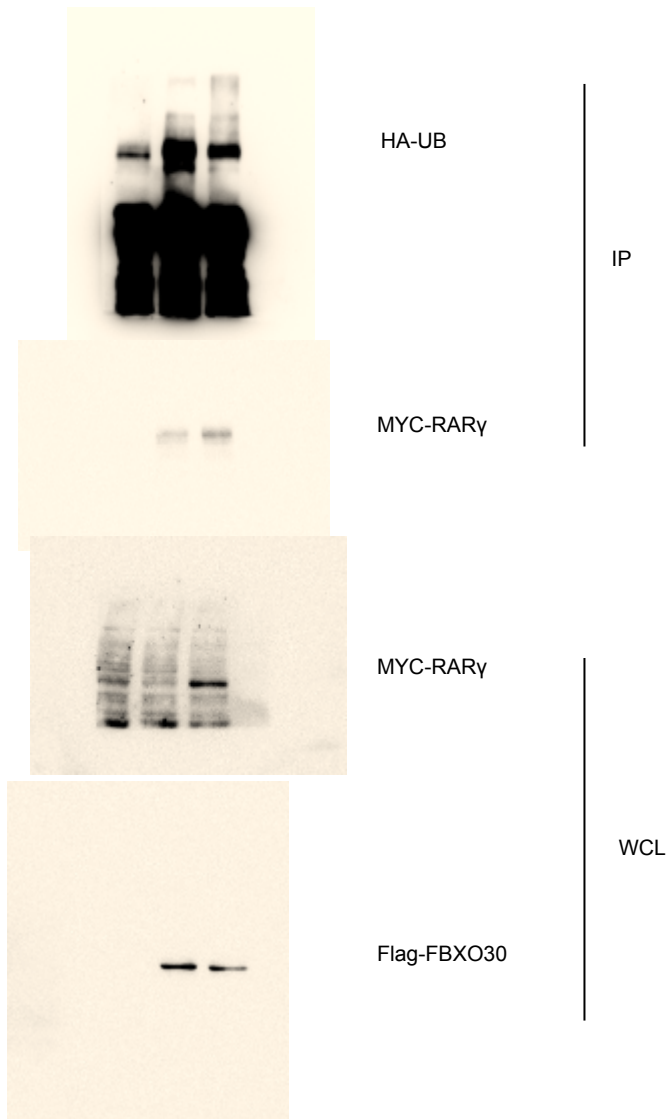
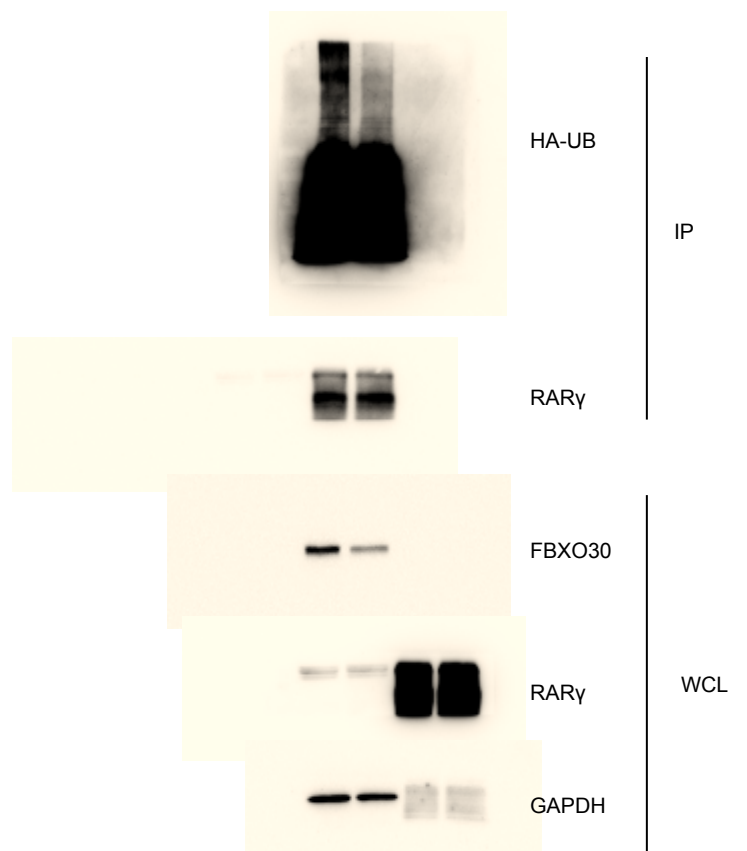
f**g****h****i**

Figure 3

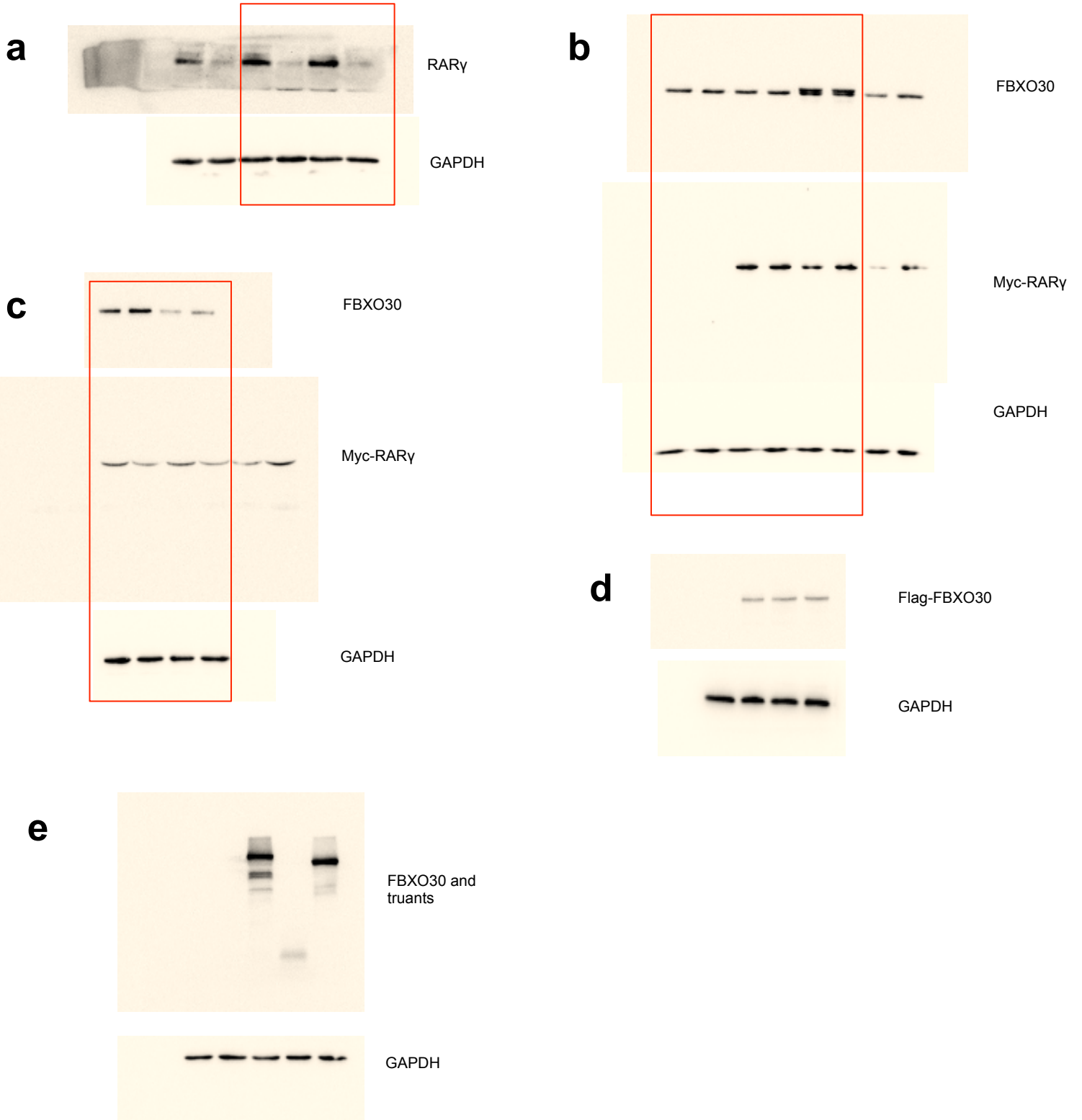


Figure 3

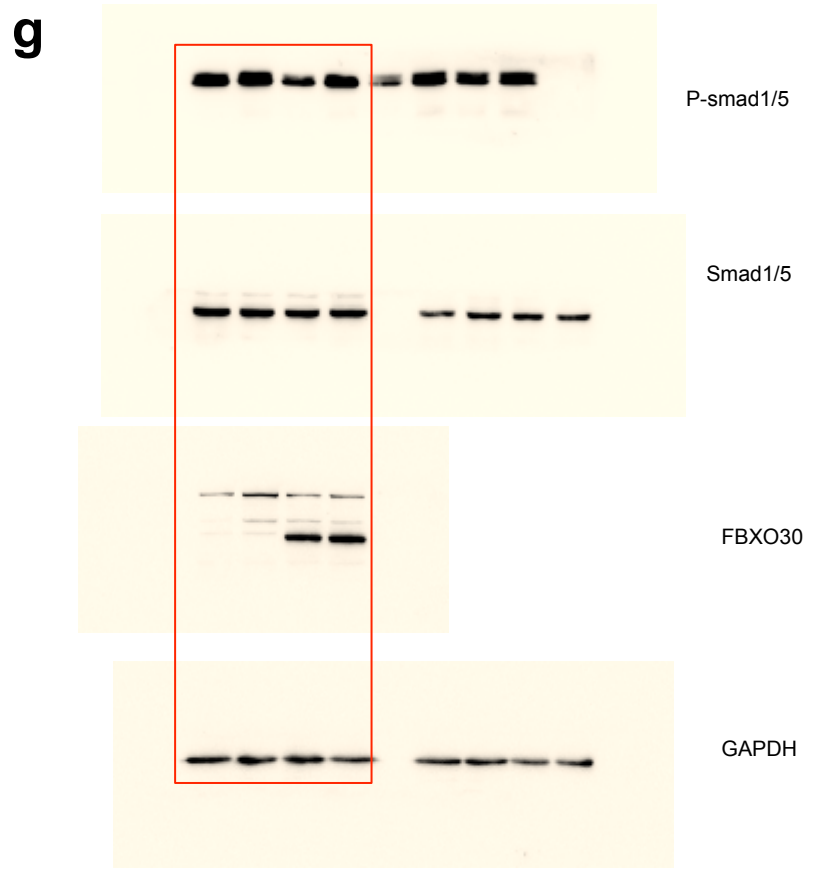
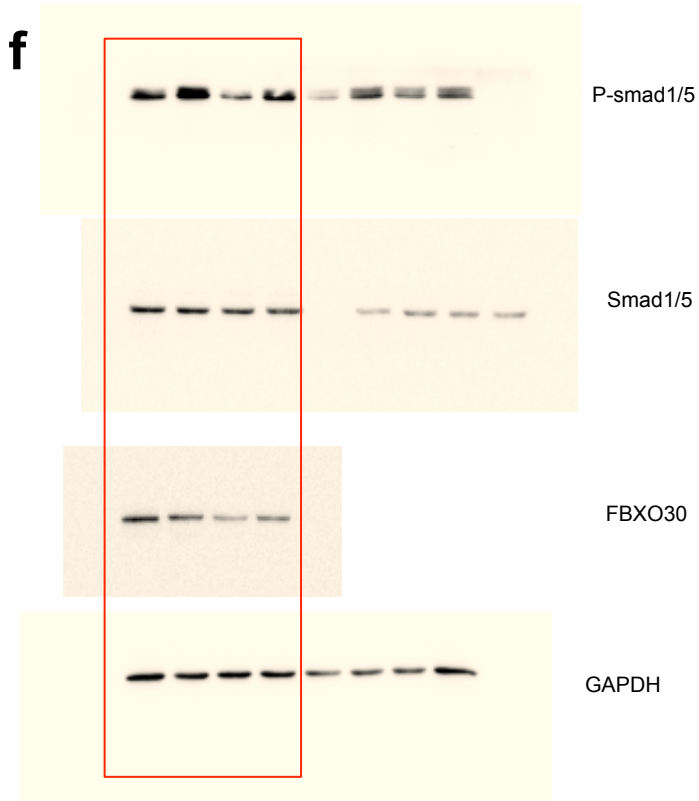


Figure 4

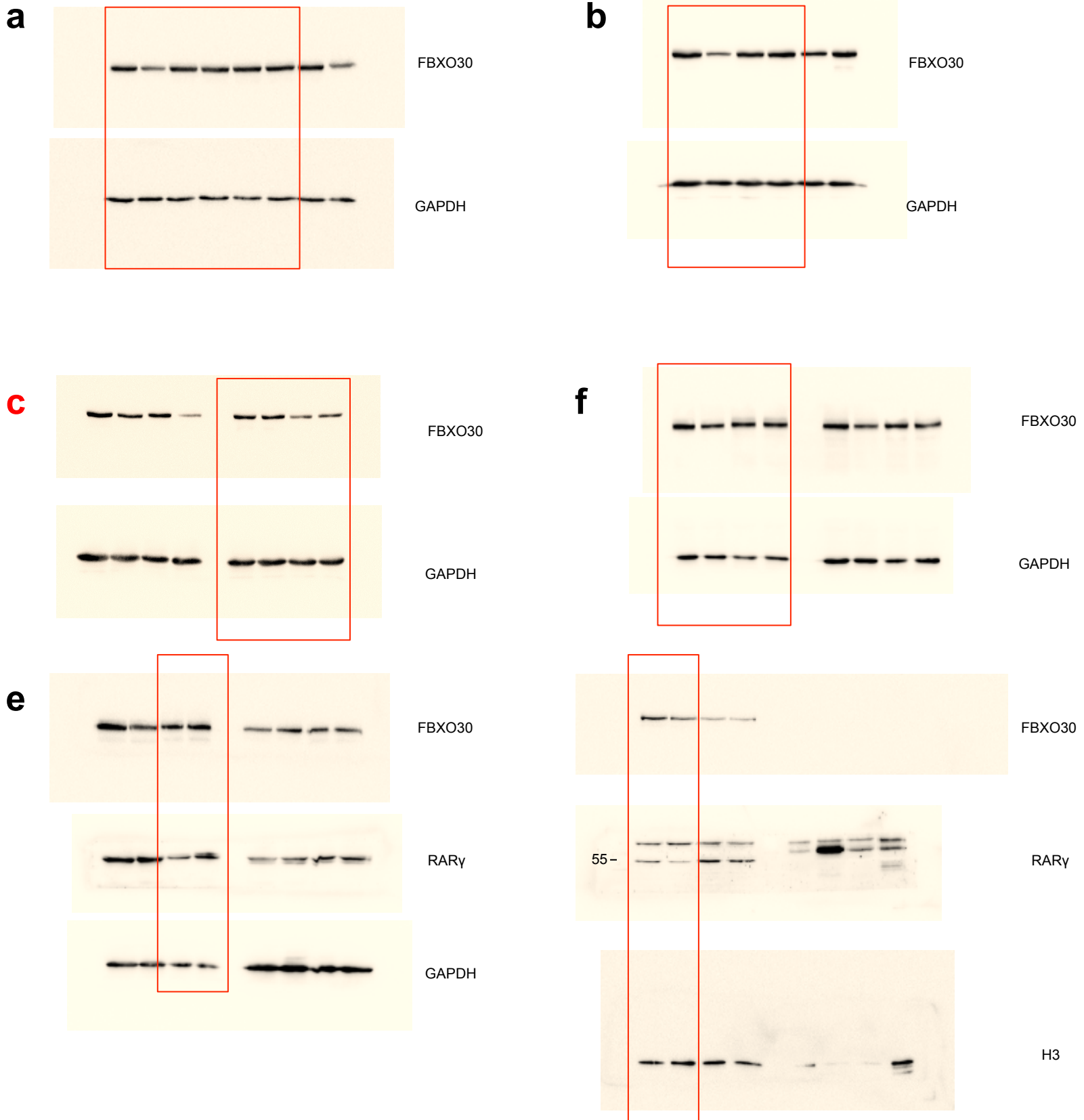


Figure 4

g



IB- HA



IB-Flag



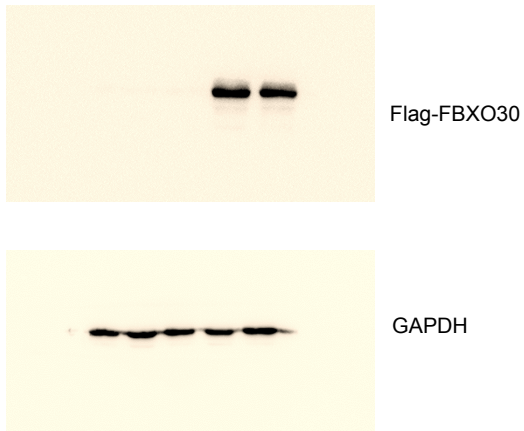
IB-Flag

WCL

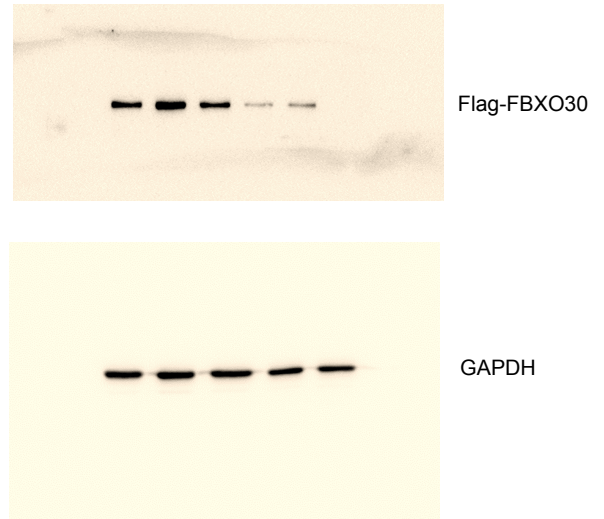
IP-Flag

Figure 5

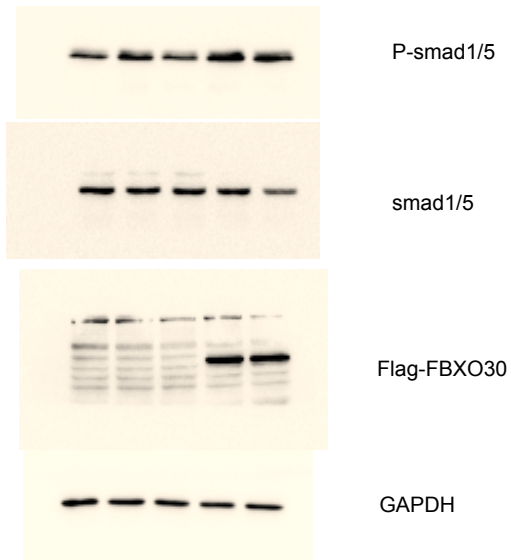
a



b



c



d

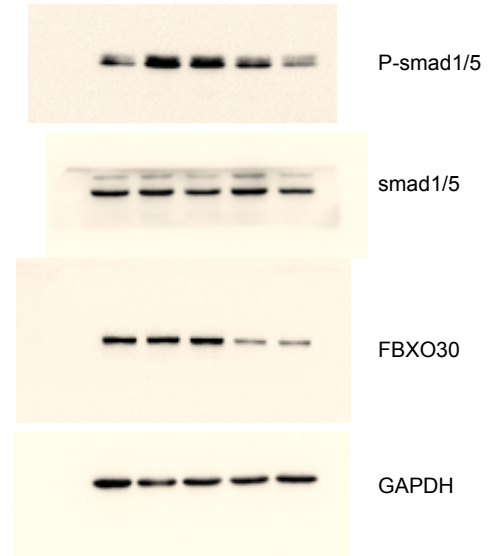


Figure 6

b

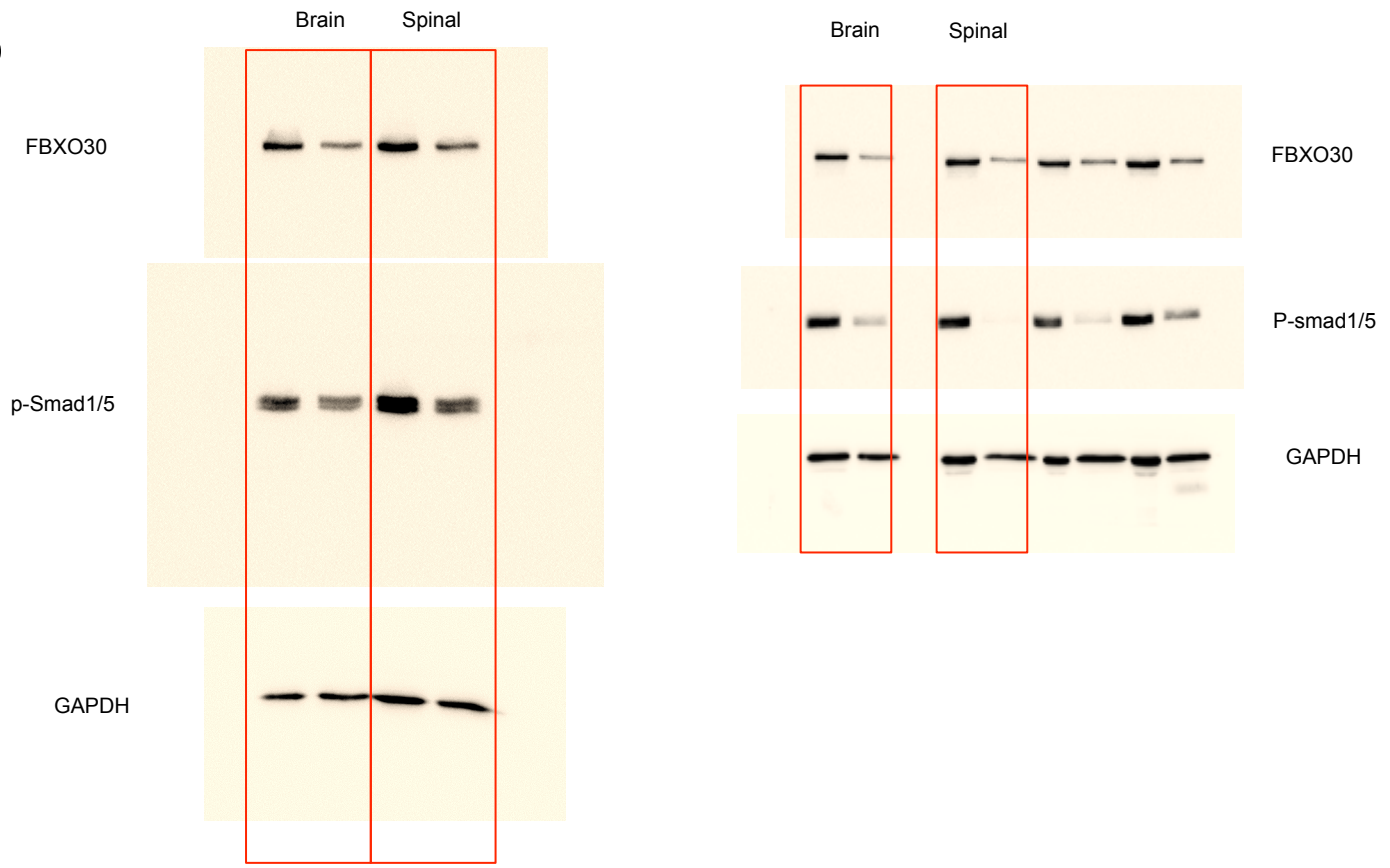
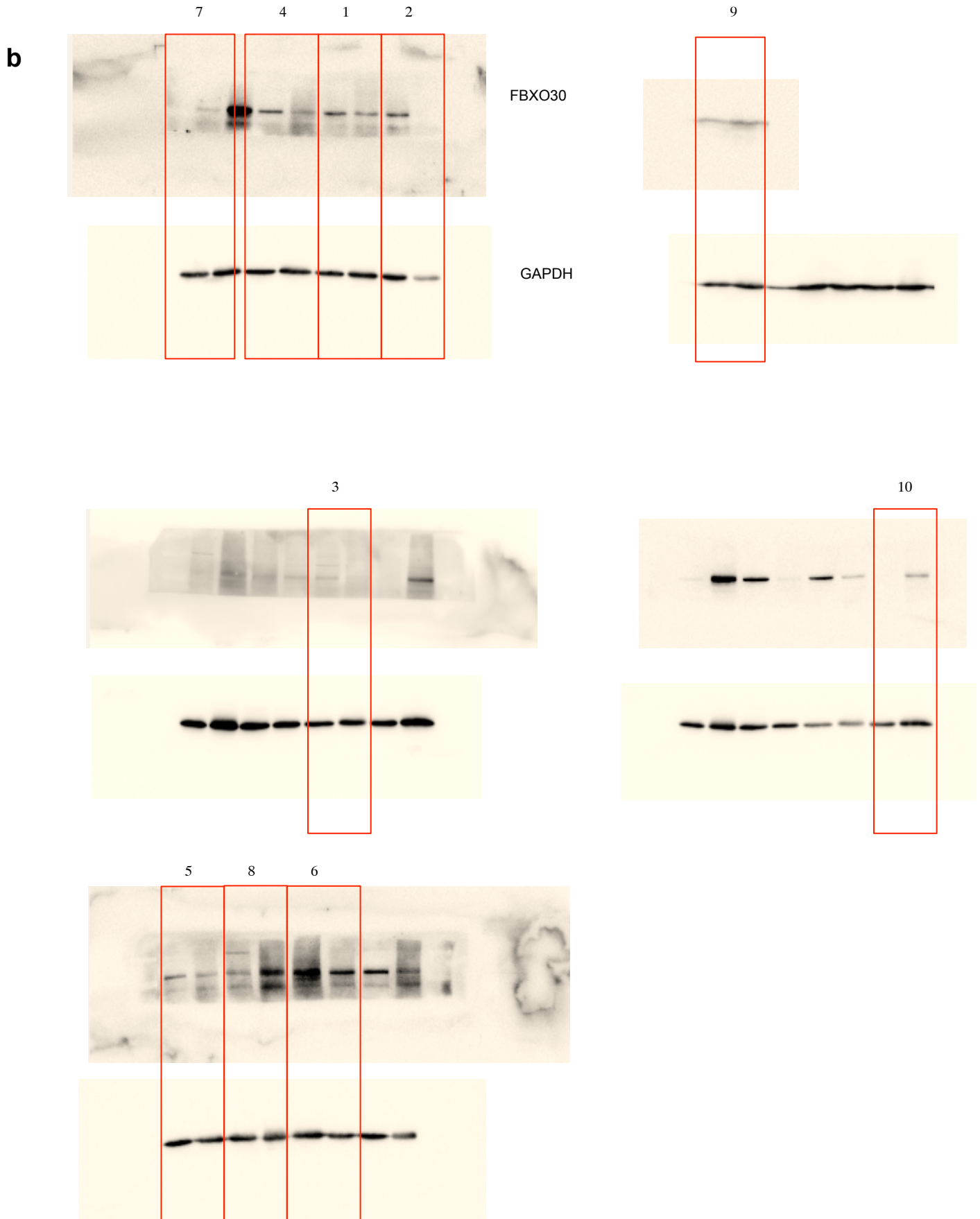
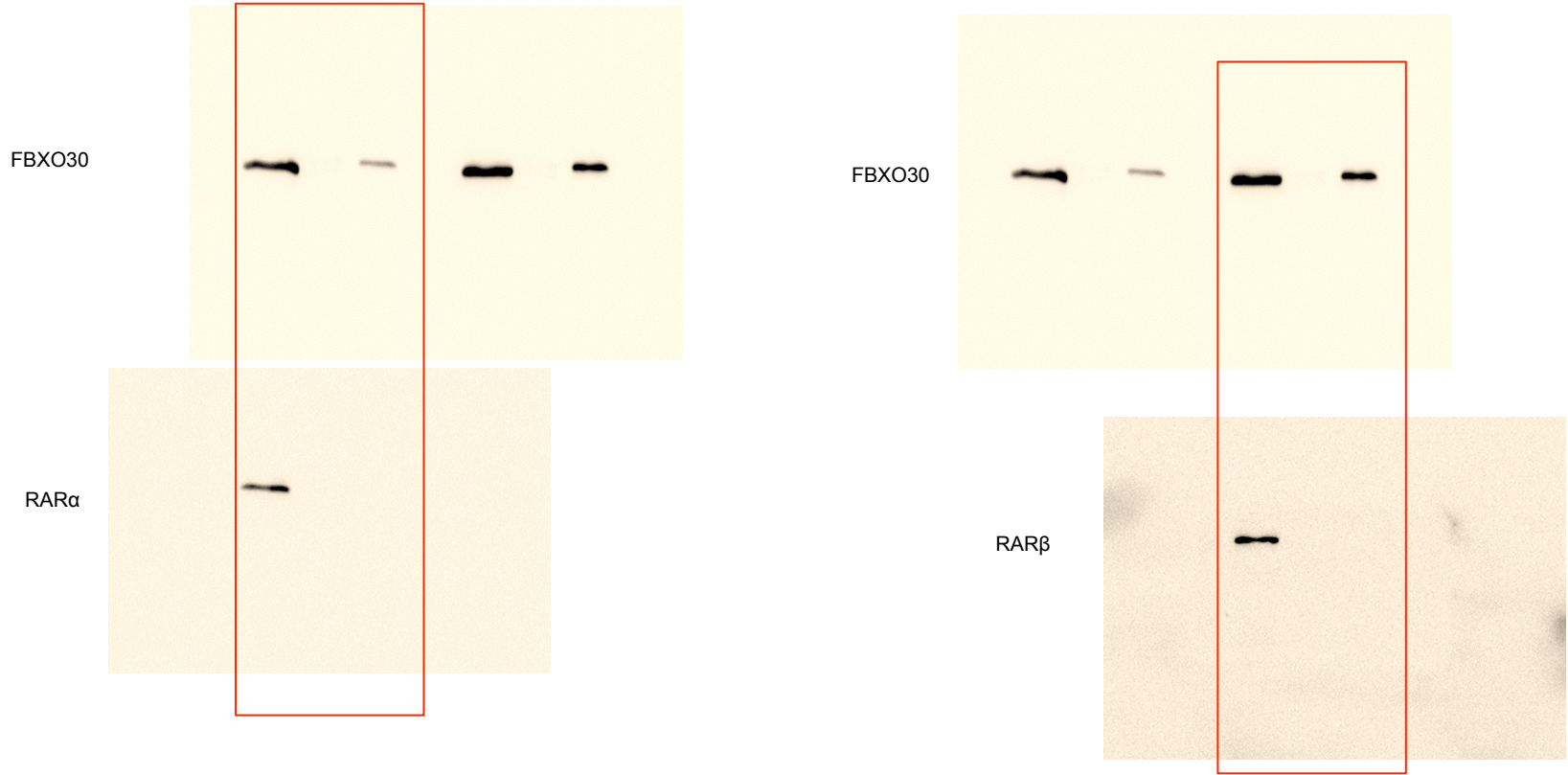


Figure 7

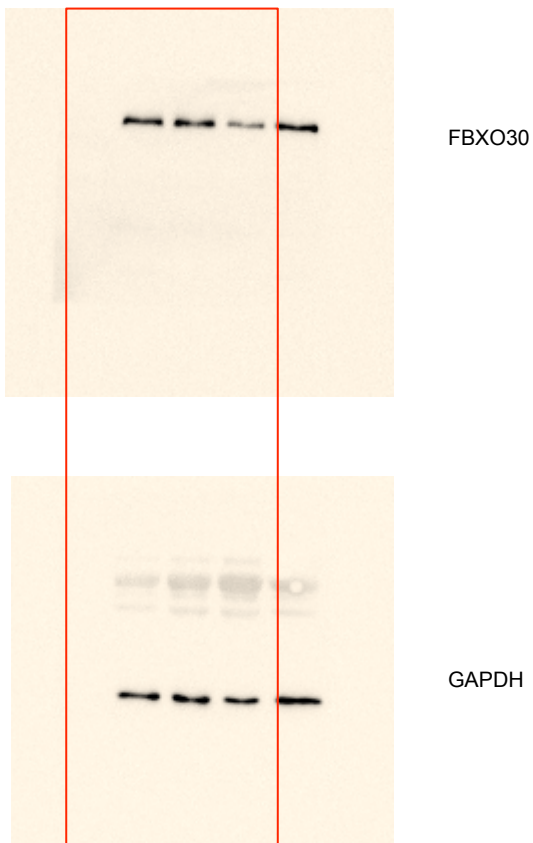


Supp Figure 2

d

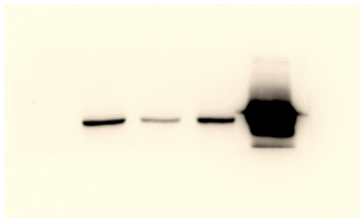


f

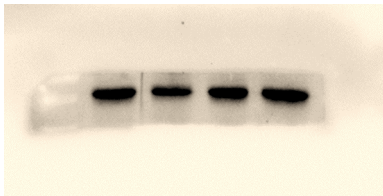


g

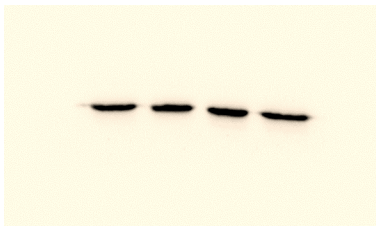
FBXO30



RAR α

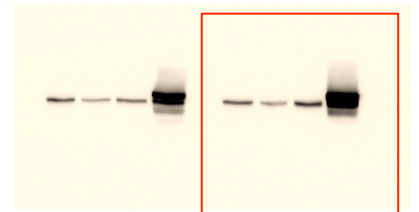


GAPDH

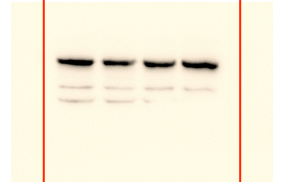


h

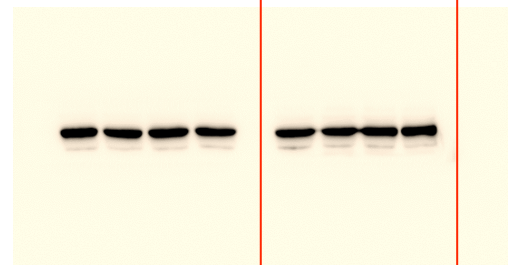
FBXO30



RAR β



GAPDH

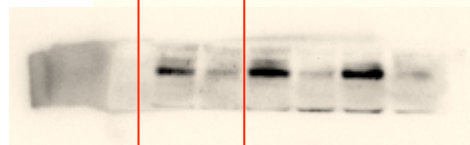


Supp Figure 3

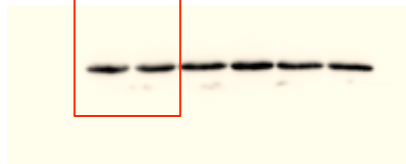
P-smad1/5



RAR γ

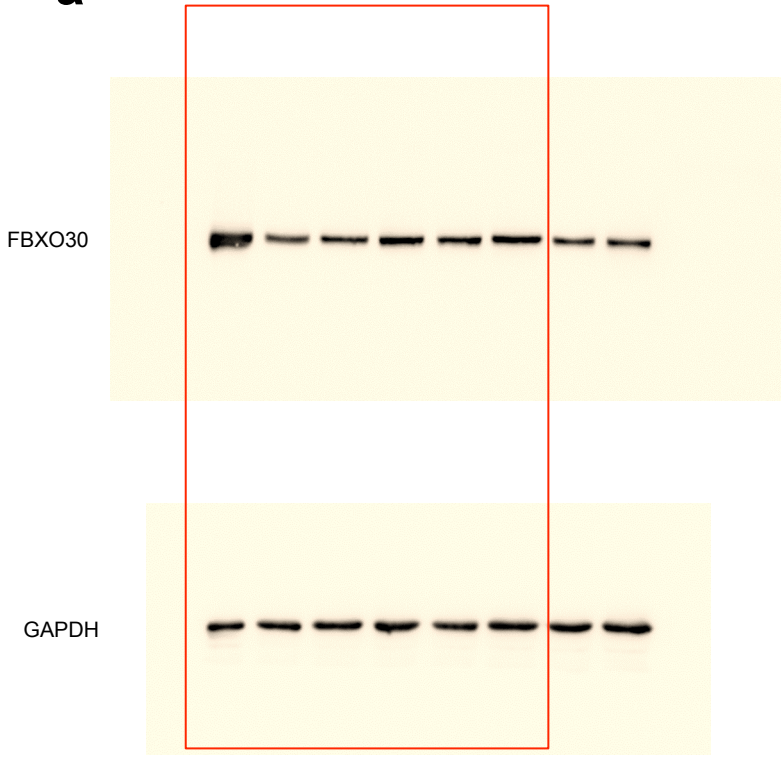


GAPDH

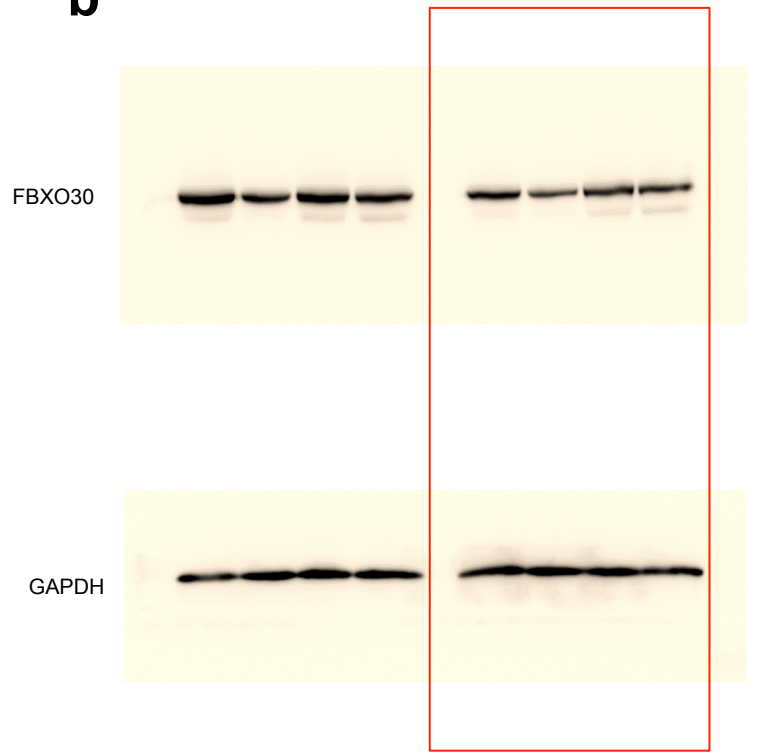


Supp Figure 4

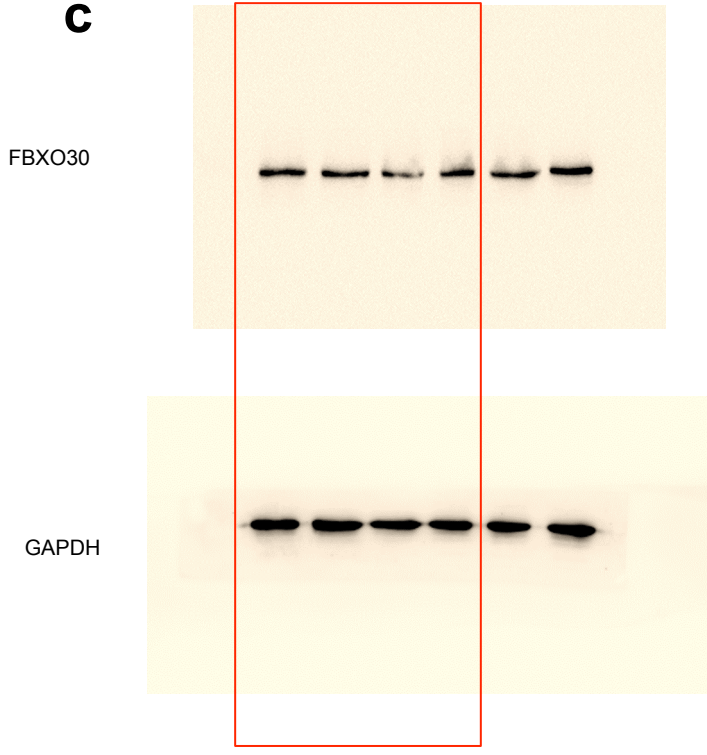
a



b

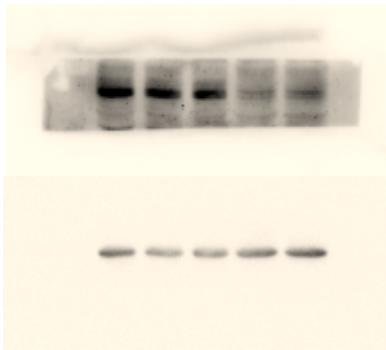


c



Supp Figure 5

a



RAR γ

GAPDH