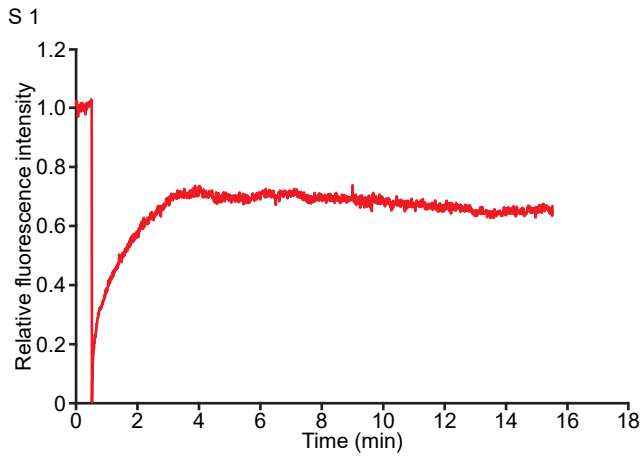


Dynamics and distribution of paxillin, vinculin, zyxin and VASP depend on focal adhesion location and orientation

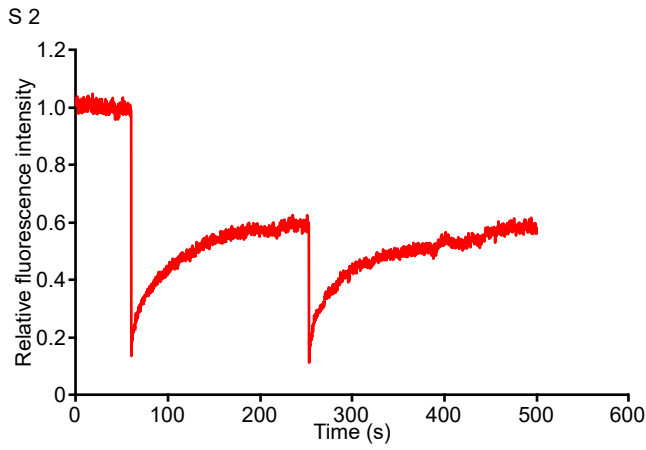
Karin Legerstee, Bart Geverts, Johan A. Slotman and Adriaan B. Houtsmuller

[supplemental figures & legends](#)



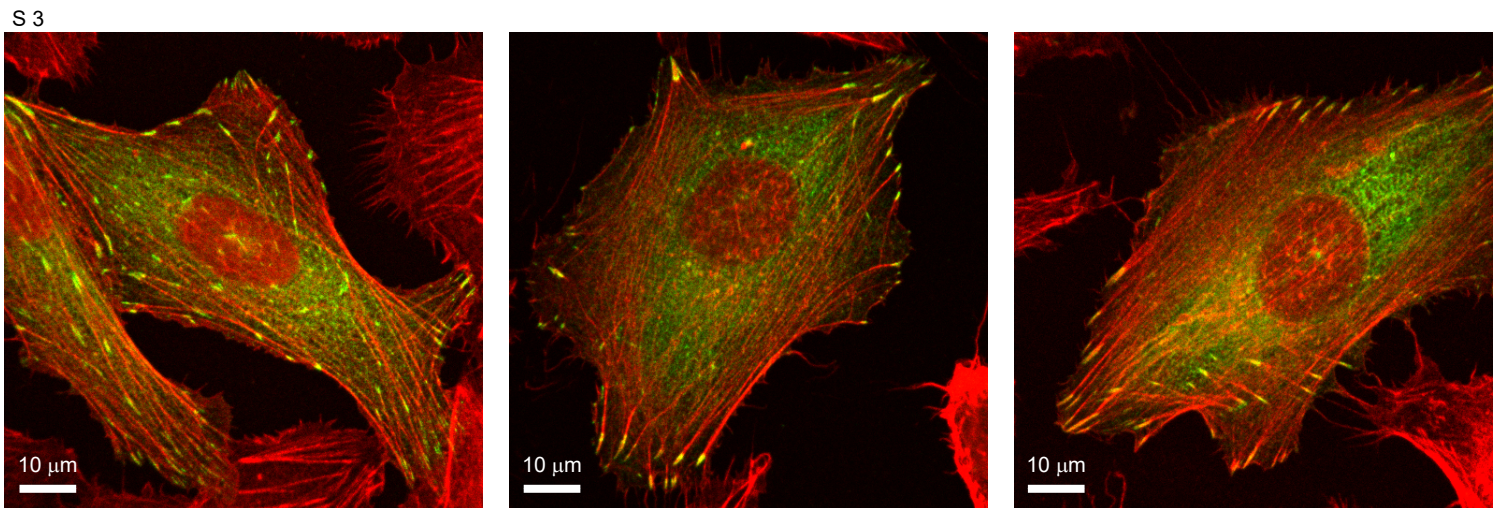
Supplementary Fig. S1 Prolonged FRAP applied to paxillin in MDCK cells

Fluorescence intensity of paxillin-GFP expressed relative to prebleach levels and intensity immediately after the bleach.



Supplementary Fig. S2 Repeated FRAP applied to paxillin in MDCK cells

Fluorescence intensity of paxillin-GFP expressed relative to prebleach levels. The bleach pulse was repeated after five minutes



Supplementary Fig. S3 F-actin fibres enter pointing FAs at their proximal ends

Overlay images of U2OS cells stably expressing paxillin-GFP (green) stained with phalloiding-CF405 to highlight the F-actin (red)