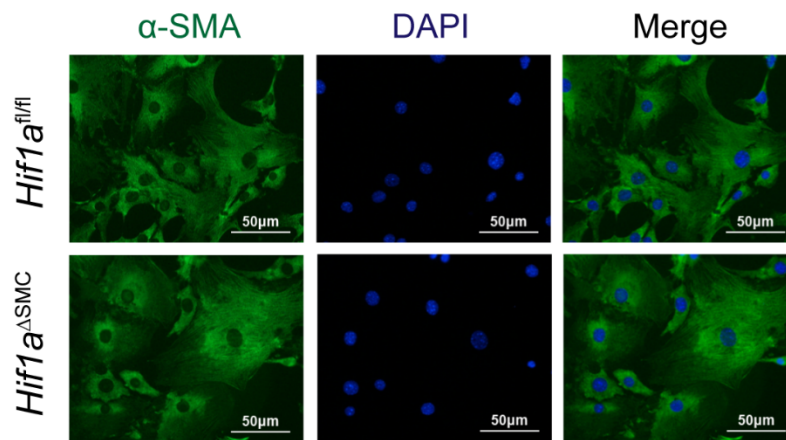


## Supplementary figures



**Supplementary Fig. 1. Purity identification of VSMCs.** Immunofluorescence staining was used to detect the expression of  $\alpha$ -SMA, a specific marker of smooth muscle cells, in primary cultured VSMCs of  $Hif1a^{fl/fl}$  and  $Hif1a^{\Delta SMC}$  mice.